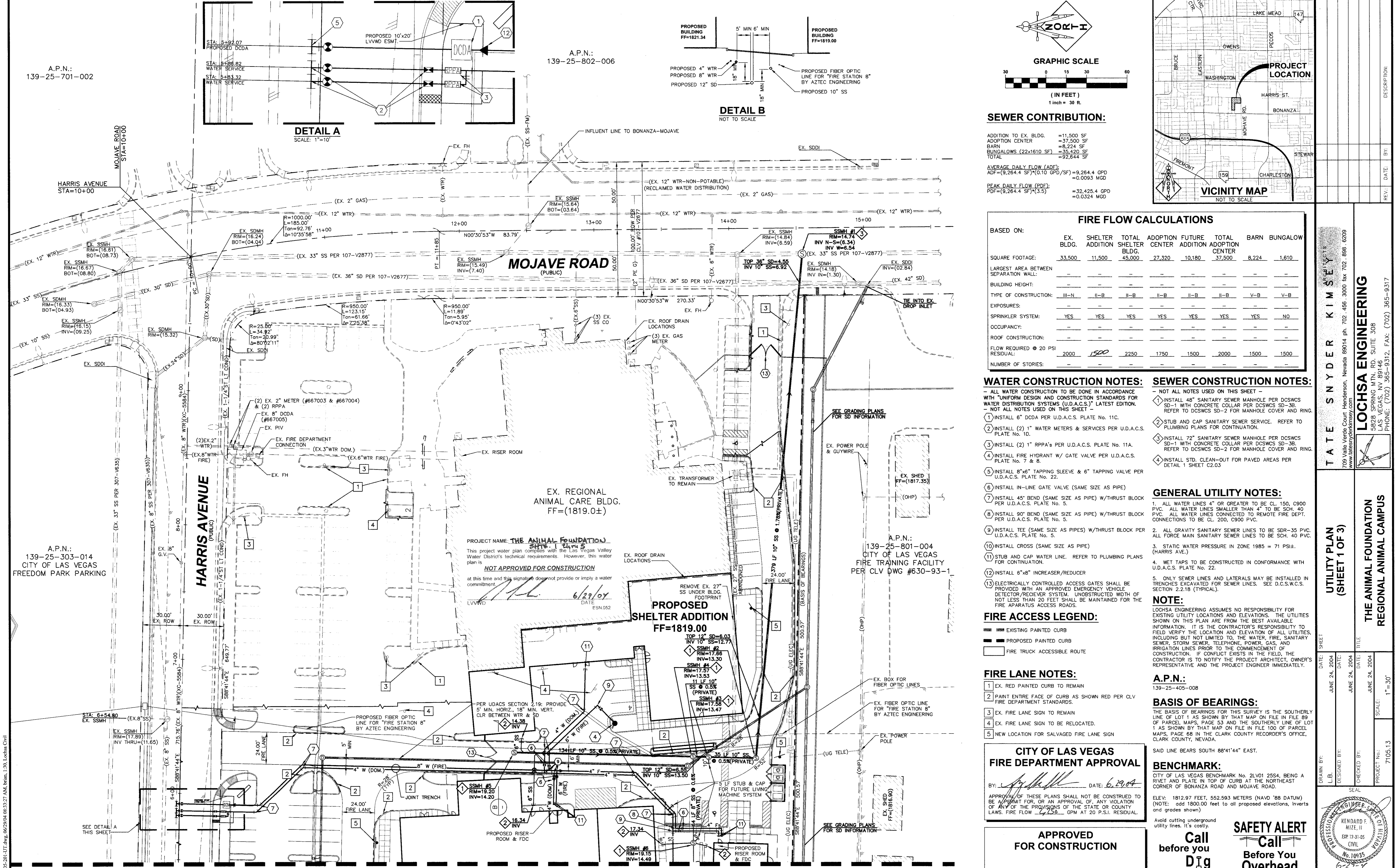


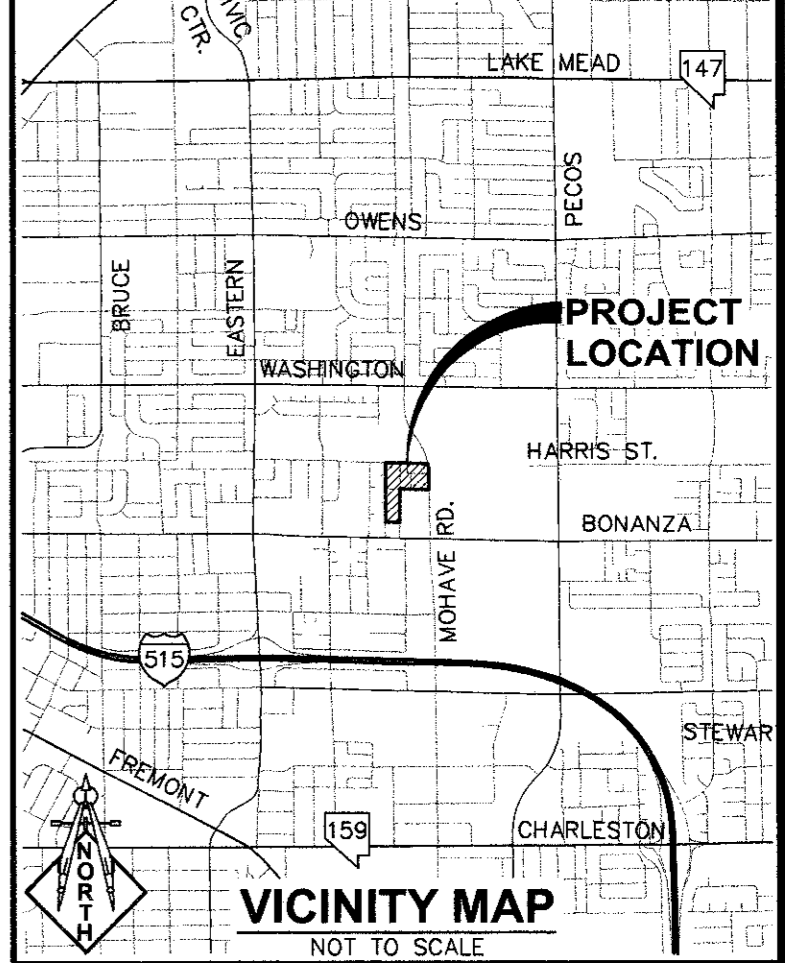
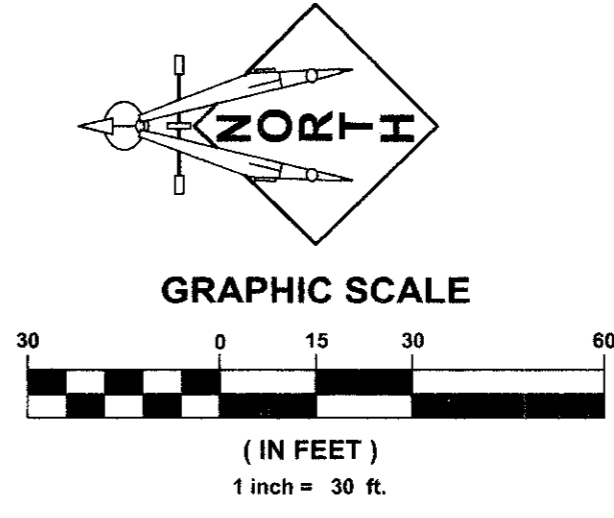
A.P.N.: 139-25-701-002

A.P.N.: 139-25-802-006

A.P.N.: 139-25-801-004
CITY OF LAS VEGAS
FIRE TRAINING FACILITY
PER CLV DWG #630-93-1



CL OR SURVEY LINE	EASEMENT LINE	HEAVY AC P.V.M.T.	DESCRIPTION:	CONTOUR LINES	EDGE OF PAVEMENT	"A" TYPE CURBS	"L" TYPE CURBS	WALLS	FENCES	AC PAVEMENT	CONCRETE	SPOT ELEVATIONS	SIGNS	MANHOLE W/ DESCRIPTION	MANHOLE DESCRIPTIONS	FIRE HYDRANTS	GATE VALVES	REDUCERS	CLEAN OUTS	UTILITY BOX OR VAULT	100w HPS STREETLIGHTS	150w HPS STREETLIGHTS	200w HPS STREETLIGHTS	250w HPS STREETLIGHTS
PROPERTY LINE	SCAMOUT LINE	LIGHT AC P.V.M.T.	EXISTING:	(2210)								(12.34) BC		(12.34) BC	⊙ = SANITARY SEWER	⊙ = STORM DRAIN	⊙ = ELECTRICAL	⊙ = TELEPHONE	□	□	□	□	□	□
ROW LINE	SCARP LINE	CONCRETE P.V.M.T.	PROPOSED:	(2210)								(12.34) BC		(12.34) BC										



SEWER CONTRIBUTION:

ADDITION TO EX. BLDG. = 11,500 SF
 ADOPTION CENTER = 37,500 SF
 BARN BUNGALOWS (22x1610 SF) = 8,224 SF
 TOTAL = 57,224 SF

AVERAGE DAILY FLOW (ADF):
 ADF=(9,264.4 SF)(0.10 GP/SF)=9,264.4 GPD
 =0.0093 MGD

PEAK DAILY FLOW (PDF):
 PDF=(9,264.4 SF)(3.5)=32,425.4 GPD
 =0.0324 MGD

FIRE FLOW CALCULATIONS

BASED ON:

	EX. BLDG.	SHELTER ADDITION	TOTAL SHELTER BLDG.	ADOPTION CENTER	FUTURE ADDITION	TOTAL ADOPTION CENTER	BARN BUNGALOW
SQUARE FOOTAGE:	33,500	11,500	45,000	27,320	10,180	37,500	8,224
LARGEST AREA BETWEEN SEPARATION WALL:	-	-	-	-	-	-	-
BUILDING HEIGHT:	-	-	-	-	-	-	-
TYPE OF CONSTRUCTION:	III-N	II-B	II-B	II-B	II-B	II-B	V-B
EXPOSURES:	-	-	-	-	-	-	-
SPRINKLER SYSTEM:	YES	YES	YES	YES	YES	YES	NO
OCCUPANCY:	-	-	-	-	-	-	-
ROOF CONSTRUCTION:	-	-	-	-	-	-	-
FLOW REQUIRED @ 20 PSI RESIDUAL:	2000	1500	2250	1750	1500	2000	1500
NUMBER OF STORIES:	-	-	-	-	-	-	-

WATER CONSTRUCTION NOTES:

- 1. ALL WATER CONSTRUCTION TO BE DONE IN ACCORDANCE WITH "UNIFORM DESIGN AND CONSTRUCTION STANDARDS FOR WATER DISTRIBUTION SYSTEMS (U.D.A.C.S.)" LATEST EDITION.
- 2. NOT ALL NOTES USED ON THIS SHEET -
- 3. INSTALL 6" DCCA PER U.D.A.C.S. PLATE No. 11C.
- 4. INSTALL (2) 1" WATER METERS & SERVICES PER U.D.A.C.S. PLATE No. 1D.
- 5. INSTALL (2) 1" RPPA'S PER U.D.A.C.S. PLATE No. 11A.
- 6. INSTALL FIRE HYDRANT W/ GATE VALVE PER U.D.A.C.S. PLATE No. 7 & 8.
- 7. INSTALL 8"x8" TAPPING SLEEVE & 6" TAPPING VALVE PER U.D.A.C.S. PLATE No. 22.
- 8. INSTALL IN-LINE GATE VALVE (SAME SIZE AS PIPE)
- 9. INSTALL 45' BEND (SAME SIZE AS PIPE) W/THRUST BLOCK PER U.D.A.C.S. PLATE No. 5.
- 10. INSTALL 90' BEND (SAME SIZE AS PIPE) W/THRUST BLOCK PER U.D.A.C.S. PLATE No. 5.
- 11. INSTALL TEE (SAME SIZE AS PIPES) W/THRUST BLOCK PER U.D.A.C.S. PLATE No. 5.
- 12. INSTALL CROSS (SAME SIZE AS PIPE)
- 13. STUB AND CAP WATER LINE. REFER TO PLUMBING PLANS FOR CONTINUATION.
- 14. INSTALL 6"x8" INCREASER/REDUCER
- 15. ELECTRICALLY CONTROLLED ACCESS GATES SHALL BE PROVIDED WITH AN APPROVED EMERGENCY VEHICLE DETECTOR/RECOVER SYSTEM. UNOBTAINED WIDTH OF NOT LESS THAN 20 FEET SHALL BE MAINTAINED FOR THE FIRE APPARATUS ACCESS ROADS.

SEWER CONSTRUCTION NOTES:

- 1. NOT ALL NOTES USED ON THIS SHEET -
- 2. INSTALL 48" SANITARY SEWER MANHOLE PER DCSWCS SD-1 WITH CONCRETE COLLAR PER DCSWCS SD-3B. REFER TO DCSWCS SD-2 FOR MANHOLE COVER AND RING.
- 3. STUB AND CAP SANITARY SEWER SERVICE. REFER TO PLUMBING PLANS FOR CONTINUATION.
- 4. INSTALL 72" SANITARY SEWER MANHOLE PER DCSWCS SD-1 WITH CONCRETE COLLAR PER DCSWCS SD-3B. REFER TO DCSWCS SD-2 FOR MANHOLE COVER AND RING.
- 5. INSTALL STD. CLEAN-OUT FOR PAVED AREAS PER DETAIL 1 SHEET C2.03

GENERAL UTILITY NOTES:

- 1. ALL WATER LINES 4" OR GREATER TO BE CL. 150, C900 PVC. ALL WATER LINES SMALLER THAN 4" TO BE SCH. 40 PVC. ALL WATER LINES CONNECTED TO REMOTE FIRE DEPT. CONNECTIONS TO BE CL. 200, C900 PVC.
- 2. ALL GRAVITY SANITARY SEWER LINES TO BE SDR-35 PVC. ALL FORCE MAIN SANITARY SEWER LINES TO BE SCH. 40 PVC.
- 3. STATIC WATER PRESSURE IN ZONE 1985 = 71 PSI± (HARRIS AVE.)
- 4. WET TAPS TO BE CONSTRUCTED IN CONFORMANCE WITH U.D.A.C.S. PLATE No. 22.
- 5. ONLY SEWER LINES AND LATERALS MAY BE INSTALLED IN TRENCHES EXCAVATED FOR SEWER LINES. SEE D.C.S.W.C.S. SECTION 2.2.18 (TYPICAL).

NOTE:

LOCHSA ENGINEERING ASSUMES NO RESPONSIBILITY FOR EXISTING UTILITY LOCATIONS AND ELEVATIONS. THE UTILITIES SHOWN ON THIS PLAN ARE FROM THE BEST AVAILABLE INFORMATION. IT IS THE CONTRACTOR'S RESPONSIBILITY TO FIELD VERIFY THE LOCATION AND ELEVATION OF ALL UTILITIES, INCLUDING BUT NOT LIMITED TO, THE WATER, FIRE, SANITARY SEWER, STORM SEWER, TELEPHONE, POWER, GAS, AND IRRIGATION LINES PRIOR TO THE COMMENCEMENT OF CONSTRUCTION. IF CONFLICT EXISTS IN THE FIELD, THE CONTRACTOR IS TO NOTIFY THE PROJECT ARCHITECT, OWNER'S REPRESENTATIVE AND THE PROJECT ENGINEER IMMEDIATELY.

FIRE ACCESS LEGEND:

- EXISTING PAINTED CURB
- PROPOSED PAINTED CURB
- FIRE TRUCK ACCESSIBLE ROUTE

FIRE LANE NOTES:

- 1. EX. RED PAINTED CURB TO REMAIN
- 2. PAINT ENTIRE FACE OF CURB AS SHOWN RED PER CLV FIRE DEPARTMENT STANDARDS.
- 3. EX. FIRE LANE SIGN TO REMAIN
- 4. EX. FIRE LANE SIGN TO BE RELOCATED.
- 5. NEW LOCATION FOR SALVAGED FIRE LANE SIGN

**CITY OF LAS VEGAS
FIRE DEPARTMENT APPROVAL**

BY: [Signature] DATE: 6/29/04

APPROVAL OF THESE PLANS SHALL NOT BE CONSTRUED TO BE A WARRANTY FOR, OR AN APPROVAL OF, ANY VIOLATION OF ANY OF THE PROVISIONS OF THE STATE OR COUNTY LAWS. FIRE FLOW 1,500 GPM AT 20 P.S.I. RESIDUAL.

APPROVED FOR CONSTRUCTION

LAS VEGAS VALLEY WATER DISTRICT PROJ. #29377 DATE:

A.P.N.:

139-25-405-008

BASIS OF BEARINGS:

THE BASIS OF BEARINGS FOR THIS SURVEY IS THE SOUTHERLY LINE OF LOT 1 AS SHOWN BY THAT MAP ON FILE IN FILE 89 OF PARCEL MAPS, PAGE 53 AND THE SOUTHERLY LINE OF LOT 1 AS SHOWN BY THAT MAP ON FILE IN FILE 100 OF PARCEL MAPS, PAGE 68 IN THE CLARK COUNTY RECORDER'S OFFICE, CLARK COUNTY, NEVADA.

BENCHMARK:

CITY OF LAS VEGAS BENCHMARK No. 2LV01 2554, BEING A RIVET AND PLATE IN TOP OF CURB AT THE NORTHEAST CORNER OF BONANZA ROAD AND MOJAVE ROAD.

ELEV: 1812.97 FEET, 552.593 METERS (NAVD '88 DATUM)
 (NOTE: add 1800.00 feet to all proposed elevations, inverts and grades shown)

Avoid cutting underground utility lines. It's costly.

Call before you Dig
 1-800-227-2600

SAFETY ALERT
 Call Before You Overhead
 1-702-227-2929

DATE:	JUNE 24, 2004
DESIGNED BY:	[Signature]
CHECKED BY:	[Signature]
PROJECT NO.:	7105.13
SCALE:	1"=30'

UTILITY PLAN (SHEET 1 OF 3)

THE ANIMAL FOUNDATION REGIONAL ANIMAL CAMPUS

LOCHSA ENGINEERING
 5828 SPRING MTN. RD. SUITE 308
 LAS VEGAS, NV 89146
 PHONE: (702) 365-9312 FAX: (702) 365-9317

TATE SNYDER KIMSEY

709 Valle Verde Court, Henderson, Nevada 89014
 PH: 702-456-3000 FAX: 702-898-6209
 www.tateksnyder.com

SEAL

RENEARD F. MIZE, II
 EXP. 12-31-05
 CIVIL
 No. 10935

C2.01
 SHEET 3 OF 19
 DRAWING No. 107V3264-2