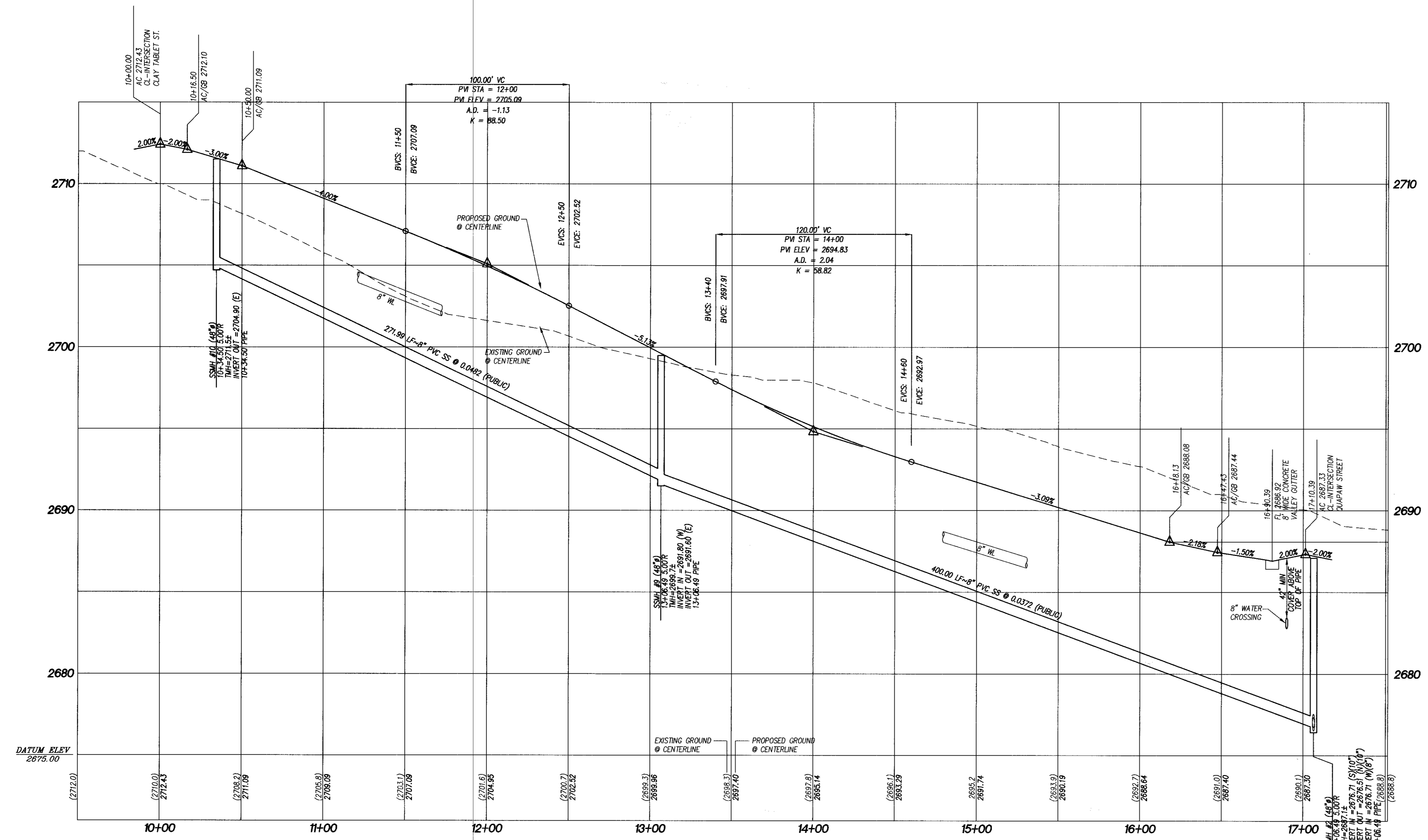
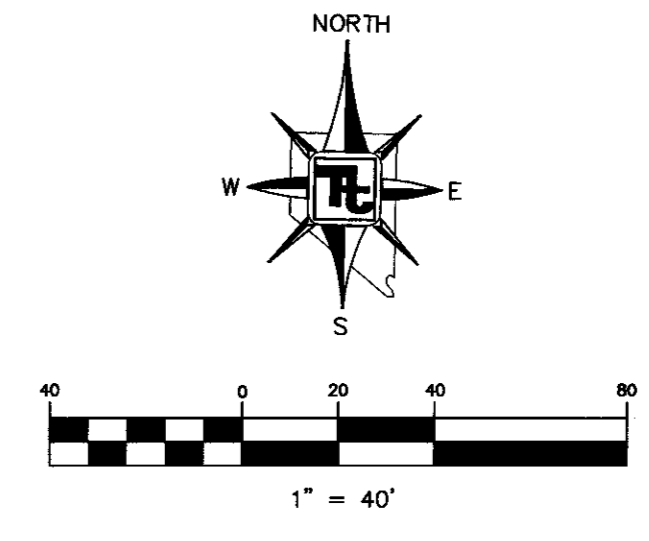


WAKASHAN AVENUE
(PRIVATE STREET)
HORIZONTAL: 1"=40'
VERTICAL: 1"=4'



STREET IMPROVEMENT CONSTRUCTION KEY

- ① 37" PRIVATE ST. = CONSTRUCT 2" AC PAVING OVER 4" TYPE II BASE, PER MODIFIED U.S.D.C.C.A. STANDARD DWG. NO. 210.
- ② CONSTRUCT "L" CURB PER U.S.D.C.C.A. STANDARD DWG. NO. 216
- ③ CONSTRUCT 8" WIDE CROSS GUTTER PER U.S.D.C.C.A. STANDARD DRAWING NO. 228

NOTE

ADD 2600' TO ALL ELEVATIONS SHOWN ON PLAN VIEW.

CURVE TABLE				
CURVE	LENGTH	RADIUS	TANGENT	DELTA
C1	11.95'	15.00'	6.31'	45°39'21"
C11	11.79'	15.00'	6.22'	45°02'55"
C22	23.38'	15.00'	14.82'	89°17'43"
C26	23.40'	15.00'	14.84'	89°22'01"

NOTE:

ALL SEWER/STORM DRAINS CROSSING WATER LINES MUST CONFORM TO SECTION 2.19 OF THE UNIFORM DESIGN AND CONSTRUCTION STANDARDS FOR POTABLE WATER SYSTEMS (UDCS) FOR WATER AND STORM MAIN CROSSINGS AND CLEARANCES.

Avoid cutting underground utility lines. It's costly.
Call before you Dig
1-800-227-2600
NEVADA POWER DIVISION
SAFETY SERVICES DEPARTMENT

Avoid overhead power line contact.
Call before you Overhead
1-702-593-6111
NEVADA POWER DIVISION
SAFETY SERVICES DEPARTMENT

Call before you Dig
Underground
1-702-799-6511

BASIS OF BEARINGS
NORTH 89°37'43" WEST BEING THE SOUTH LINE OF THE NORTHWEST QUARTER (NW 1/4) OF THE SOUTHEAST QUARTER (SE 1/4) OF SECTION 19, TOWNSHIP 19 SOUTH, RANGE 60 EAST, M.D.M., CITY OF LAS VEGAS, CLARK COUNTY, NEVADA AS SHOWN ON THAT MAP IN THE CLARK COUNTY RECORDER'S OFFICE, CLARK COUNTY, NEVADA IN FILE 107 OF SURVEYS, AT PAGE 31.

BENCHMARK
RIVET AND PLATE IN CONCRETE CYLINDER NW CORNER OF DEER SPRINGS AND RILEY
#BLV902068 775.1977 METERS/2543.29 FEET

NOTE:
ALL PRIVATE STREETS & DRIVES ARE P.U.E., CLV SEWER EASEMENTS, AND PUBLIC DRAINAGE EASEMENTS TO BE PRIVATELY MAINTAINED BY H.O.A.

APPROVED FOR CONSTRUCTION

LAS VEGAS VALLEY WATER DISTRICT (PROJECT #28003, H85115) DATE 7/19/04

REV.	DATE	BY	REVISION

KIMBALL HILL HOMES
8 SUNSET WAY, SUITE 101
LAS VEGAS, NEVADA 89014
(702) 436-4552

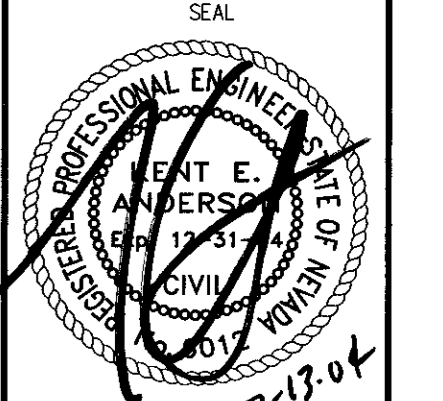
TETRA TECH, INC.
INFRASTRUCTURE SERVICES GROUP
401 N. Buffalo Dr. Suite 100, Las Vegas, Nevada 89145
(702) 436-4552

STREET PLAN AND PROFILE
WAKASHAN AVENUE

ARROYO CANYON
CITY OF LAS VEGAS

SHEET
DRAWN BY: SSS/KEA
DESIGNED BY: SSS/KEA
CHECKED BY: SSS/KEA
SCALE: 1"=40'
1"=4'

QUALITY CONTROL BY: SSS/KEA
PROJECT NO. P08719-0013



SHEET **PP4**
13 OF 21
DRAWING NO. 10714828