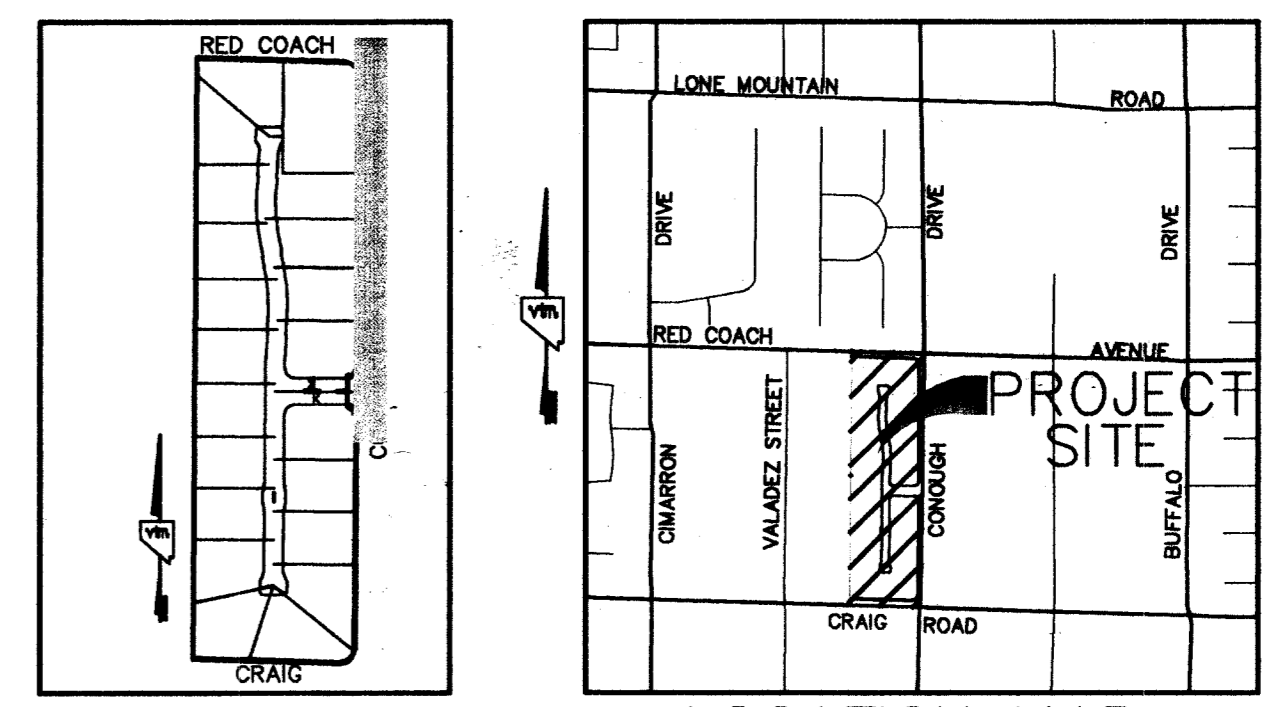
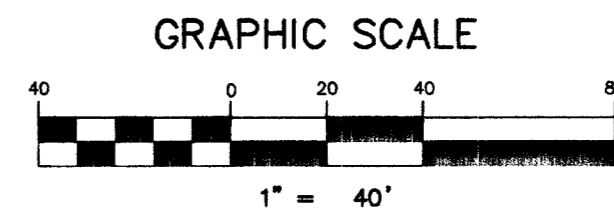


CONOUGH LANE PLAN (60' PUBLIC RW)
SCALE: 1"=40' HORIZ.



KEY MAP
N.T.S.
LOCATION MAP



BENCHMARK
PROJECT DATUM: NORTH AMERICAN VERTICAL DATUM (NAVD88)
CITY OF LAS VEGAS BENCHMARK #BLV00-4E6
NAVD88 ELEVATION: 718.0830 METERS (2355.91 FEET)
RIVET AND PLATE IN CONCRETE CYLINDER AT SOUTHEAST CORNER OF CRAIG AND CONOUGH

BASIS OF BEARINGS
THE BASIS OF BEARINGS FOR THIS PROJECT IS NORTH 00°19'04" EAST BEING EAST LINE OF THE SOUTHWEST QUARTER (SW 1/4) OF THE NORTHEAST QUARTER (NE 1/4) OF SECTION 4, TOWNSHIP 20 SOUTH, RANGE 60 EAST, M.D.M., CLARK COUNTY, NEVADA, AS SHOWN ON A FINAL MAP ON FILE IN THE CLARK COUNTY, NEVADA, RECORDER'S OFFICE IN FILE 9 AT PAGE 40.

LINE TABLE

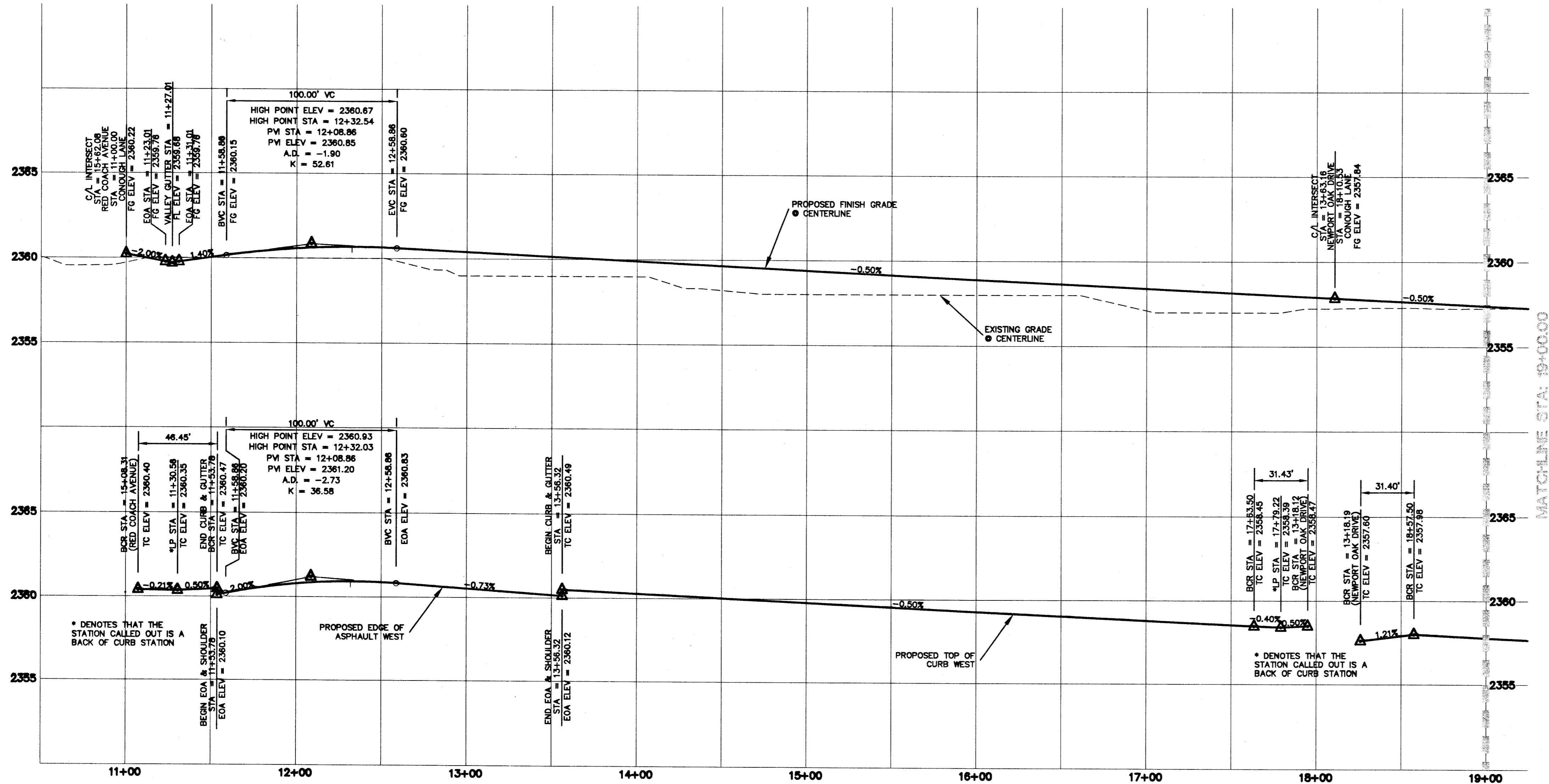
LINE	LENGTH	BEARING
L33	407.18	S00°19'04"V

CURVE TABLE

CURVE	LENGTH	RADIUS	TANGENT	DELTA
C35	46.45	30.00	88°42'40"	29.33
C38	31.42	20.00	90°01'33"	20.01



- LEGEND**
- FG FINISH GRADE
 - FL FLOW LINE
 - TC TOP OF CURB
 - TRC TOP OF ROLL CURB
 - EAC EDGE OF ASPHALT PAVEMENT
 - FUT FUTURE
 - EXIST EXISTING (EX)
 - VG VALLEY GUTTER
 - NG NATURAL GROUND
 - H.P. HIGH POINT
 - L.P. LOW POINT
 - C/L CENTER LINE
 - O/C OFFSET CURB
 - BC BACK OF CURB
 - BCR BEGIN CURB RETURN
 - IT TOP OF FOOTING
 - OB GRADE BREAK
 - PC POINT OF CURVATURE
 - PT POINT OF TANGENCY
 - PRC POINT OF REVERSE CURVATURE
 - PCC POINT OF COMPOUND CURVATURE
 - BVC BEGIN VERTICAL CURVE
 - MVC MID-POINT OF VERTICAL CURVE
 - END VERTICAL CURVE
 - PRVC POINT OF REVERSE VERTICAL CURVE
 - VPI VERTICAL POINT OF INTERSECTION
 - TPW TOP OF PLANTER WALL
 - TRW TOP OF RETAINMENT WALL
 - TOP OF CHANNEL/SCARP
 - TOE OF CHANNEL/SCARP
 - TOP OF BOX
 - PP POWER POLE
 - TRANS. TRANSITION
 - RET. RETAINMENT
 - INT. INTERSECTION
 - D.G. DESIGN GRADE
 - TSW TOP OF SIDEWALK
 - FF FINISH FLOOR
 - GFF GARAGE FINISH FLOOR
 - BFE BASE FLOOD ELEVATION
 - R/W RIGHT-OF-WAY
 - S/W SIDEWALK
 - EX. CONTOUR(5' INTERVAL)
 - EX. CONTOUR(1' INTERVAL)
 - PROPOSED CONTOUR
 - PROPOSED PAD GRADE
 - FUT./EXIST. PAD GRADE
 - SLOPE AND FLOW DIRECTION
 - EDGE OF EXIST. A.C.
 - SAW CUT & MATCH A.C.
 - SIDEWALK RAMP
 - PAD SWALE SLOPES
 - SCARP AREA
 - LOT NUMBER
 - BLOCK NUMBER
 - RETAINING HEIGHT (FEET)
 - SIGHT VISIBILITY ZONES
 - PROJECT BOUNDARY LINE
 - SETBACK LINE
 - R/W OR P/L
 - EXIST. IMPROVEMENTS
 - FUTURE IMPROVEMENTS
 - CENTER LINE
 - RETAINING WALL
 - CONC. BLOCK WALL
 - EXIST. CONC. BLOCK WALL
 - EXIST. DIRT ROAD
 - EXIST. AC
 - CONSTRUCTION PHASE LINE OR UNIT BOUNDARY LINE
 - MATCHLINE
 - SAW CUT, MATCH & REPLACE EXIST. ASPHALT



CONOUGH LANE PROFILE (60' PUBLIC RW)
SCALE: 1"=40' HORIZ.
1"=4' VERT.

- CONSTRUCTION KEY NOTES:**
(PER U.S.D.C.C.A. STANDARD DRAWINGS)
- (A) CONSTRUCT "L" CURB & GUTTER PER STD. # 216
 - (B) CONSTRUCT "A" ISLAND CURB PER STD. # 219
 - (C) CONSTRUCT SIDEWALK PER STD. # 234
 - (D) CONSTRUCT "ROLL" CURB & GUTTER PER STD. # 217A
 - (E) CONSTRUCT "B" CROSS GUTTER PER STD. # 228
 - (F) CONSTRUCT "2" SIDEWALK UNDER DRAIN PER STD. # 236
 - (G) CONSTRUCT DEPRESSED CURB PER SHEET DET1 DETAIL "O"
 - (H) CUT & MATCH 2' BEYOND EXIST. A.C.
 - (I) CONSTRUCT 10' CURB TYPE TRANSITION PER SHEET DET1 DETAIL "P"
 - (J) CONSTRUCT 4' X 18" DRAINAGE OPENING IN BLOCK WALL PER SHEET DET1 DETAILS "J" & "K"
 - (K) CONSTRUCT REMOVABLE BOLLARDS PER SHEET DET1
 - (L) CONSTRUCT CONCRETE "U" CHANNEL PER SHEET DET1 DETAILS "J" & "L"
 - (M) CONSTRUCT SIDEWALK RAMP USING ARMOR TILE TRUNCATED DOMES OR EQUIVALENT PER CCAUSD # 235 CASE 1
 - (N) CONSTRUCT RESIDENTIAL DRIVEWAY PER STD. # 222A & 225
 - (O) CONSTRUCT 6" HIGH IRON GATE SHEET DET1 DETAILS "F" & "G"
 - (P) CONSTRUCT CHANNEL STEM WALL SEE SHEET DET1 DETAIL "M"
 - (Q) CONSTRUCT DRIVEWAY WITH MIN. LENGTH OF 25'
 - (R) CONSTRUCT DRIVEWAY WITH MIN. LENGTH OF 36'
 - (S) CONSTRUCT DRIVEWAY WITH MIN. LENGTH OF 60'
 - (T) CONSTRUCT "B" CROSS GUTTER PER STD. # 229
 - (U) CONSTRUCT RESIDENTIAL DRIVEWAY PER STD. # 222 & 223

ENGINEER DISCLAIMER NOTE
UTILITY LOCATIONS SHOWN HEREON ARE APPROXIMATE ONLY. IT SHALL BE THE CONTRACTOR'S RESPONSIBILITY TO DETERMINE THE EXACT HORIZONTAL AND VERTICAL LOCATION OF ALL EXISTING UNDERGROUND AND OVERHEAD UTILITIES AND NOTIFY THE DESIGN ENGINEER IMMEDIATELY OF ANY DISCREPANCIES PRIOR TO COMMENCING CONSTRUCTION.
NO REPRESENTATION IS MADE THAT ALL EXISTING UTILITIES ARE SHOWN HEREON. THE ENGINEER ASSUMES NO RESPONSIBILITY FOR UTILITIES NOT SHOWN OR UTILITIES NOT SHOWN IN THEIR PROPER LOCATION.

CLARK COUNTY
DEVELOPMENT SERVICES DEPARTMENT
OF CIVIL ENGINEERING

Acceptance of plans for filing
By: [Signature]
NOTE: Power poles and/or other existing facilities not in proper location based on proposed improvements shown hereon will be re-located at no expense to Clark County.

D&S DEVELOPMENT
3638 N. RANCHO DRIVE
LAS VEGAS, NV 89130-3168
PH. (702) 873-7550 FAX (702) 362-2597

CLARK COUNTY, NEVADA

CONOUGH / CRAIG

STREET PLAN & PROFILE
CONOUGH LANE

CONOUGH / CRAIG

DRAWN BY: JMK 6-4-03
DESIGNED BY: JMK 6-4-03
CHECKED BY: DEH 6-4-03
PROJECT NO: 5202
SCALE: 1"=40' HORIZ.
1"=4' VERT.

SHEET
ST4
11 OF 17 SHEETS
DRAWING NO.
HTE# 04-15163

REVISION

20245

1402024520251-CONOUGH.DWG, 08/01/2004 04:23:34 PM, 140