

WATER CALCULATIONS			
BASED ON 1997 UNIFORM PLUMBING CODE APPENDIX 'A'			
FIXTURE	NO REQ	FIL	TOTAL
WATER CLOSET, FLUSH VALVE, 1/6 GPF	9	5'	45
URINAL FLUSH VALVE, 1/6 GPF	3	5'	15
LAVATORY	2	1'	1
HAND SINK	1	3	3
MOP SINK	1	3	3
3 COMPARTMENT SINK	1	2	2
HOSE BIBS	1	2.5'	2.5
WALL HYDRANT	1	2.5'	2.5
EVAPORATIVE COOLER	1	2"	2
TOTAL FIL			73.5

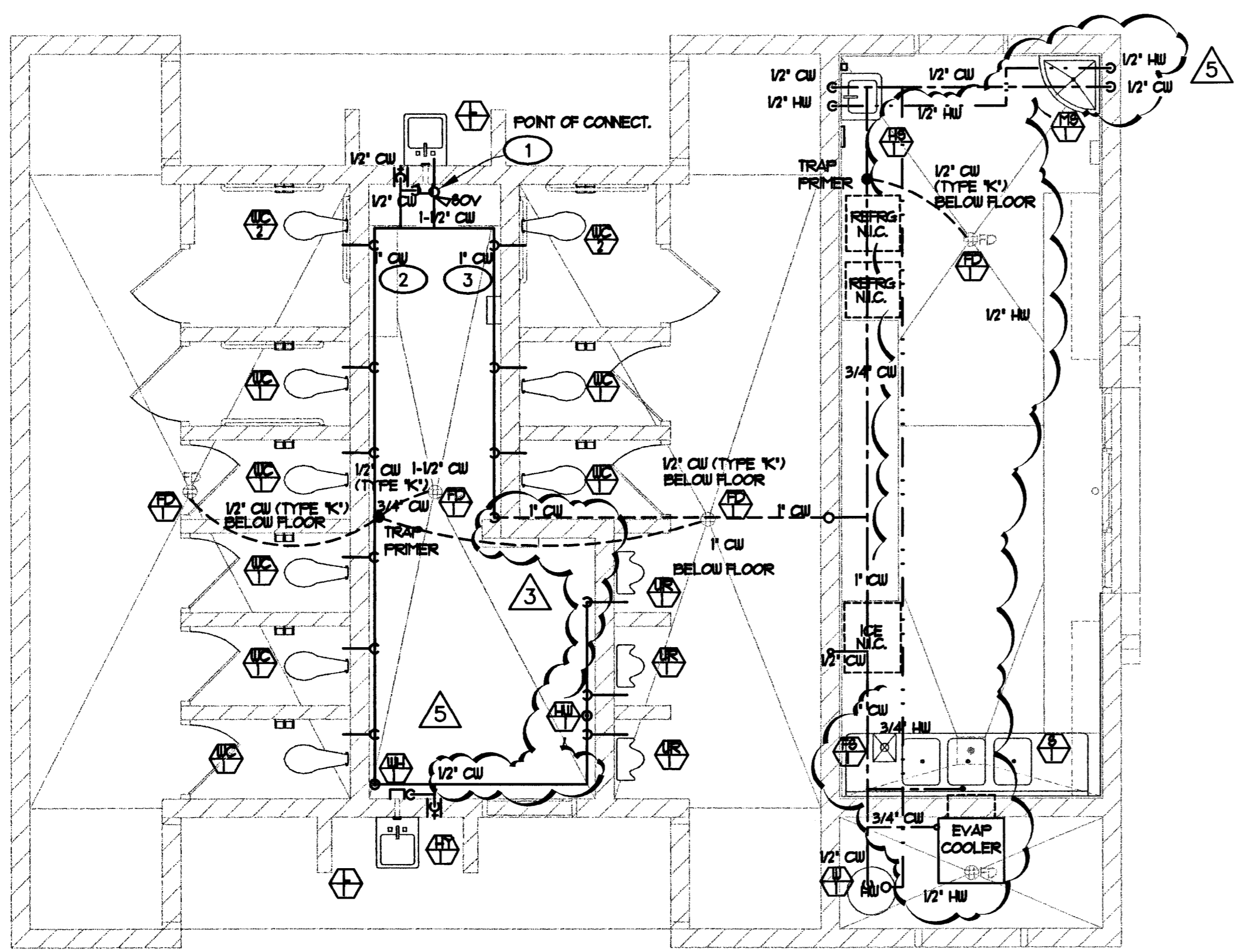
* PUBLIC HEAVY USE
** 2 FIL PER GAL/MINUTE

12 FIXTURE UNITS IS EQUIVALENT TO 60 GAL/MIN
UNIFORM PLUMBING CODE CHART A-3

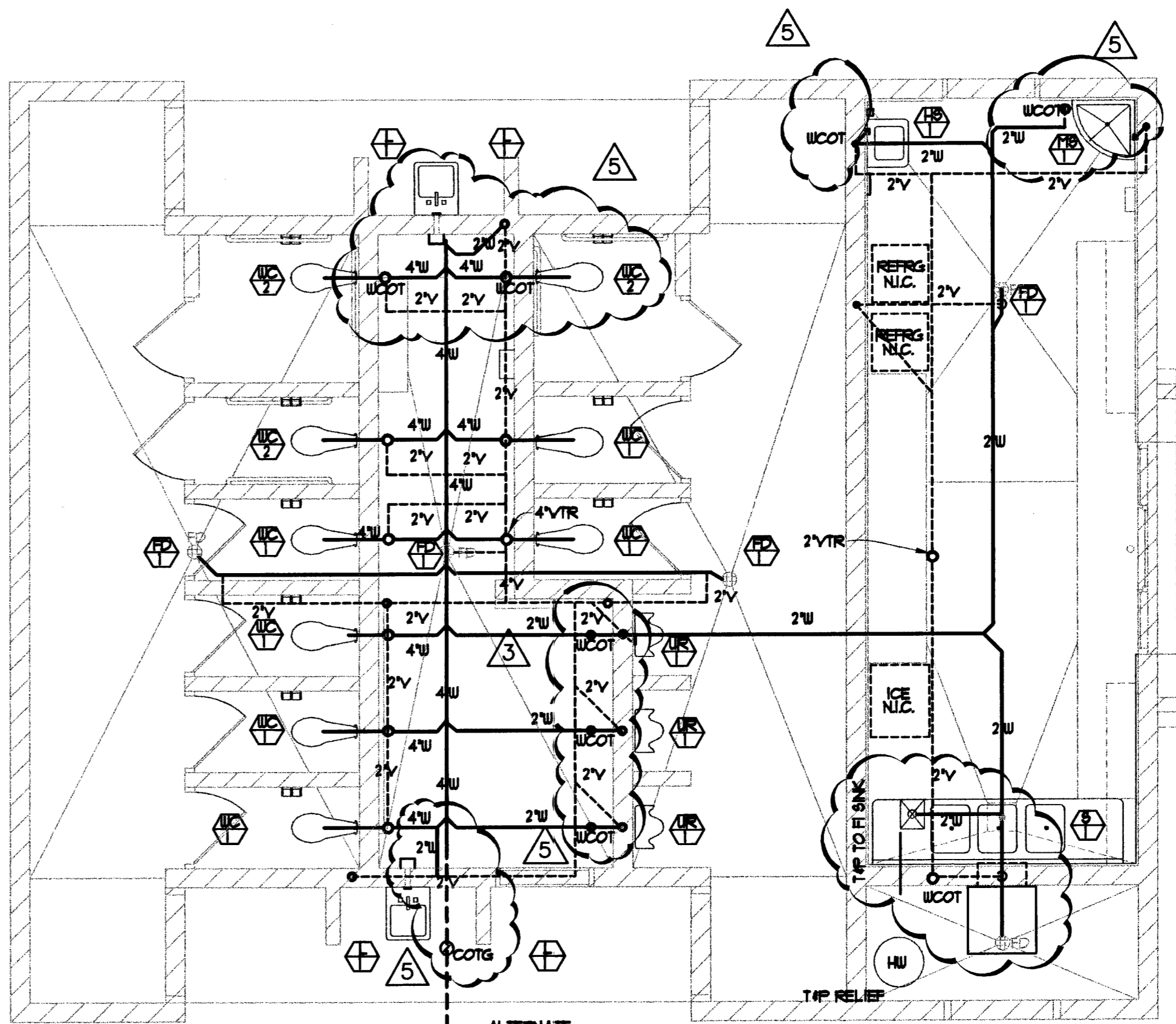
60 GAL/MIN AT A MAXIMUM VELOCITY OF 10 FT/SEC REQUIRES A 2" PIPE
UNIFORM PLUMBING CODE CHART A-4

FIXTURE SCHEDULE			FIXTURE SCHEDULE		
MARK	DESCRIPTION	REMARKS	MARK	DESCRIPTION	REMARKS
1/6	WATER CLOSET - WALL HUNG BLOWOUT JET TOILET, HEAVY GAGE 304 STAINLESS STEEL CONSTRUCTION, WHITE OPEN FRONT HINGED SEAT	1/6 GPF	1/6	WALL HYDRANT - JR. SMITH 8809 GT	NON-FREEZING WITH INTEGRAL VACUUM BREAKER
1/6	ACORN DURA-WARE 2100-W-I-CN-HS BLOAN 982-1/6 FLUSH VALVE WITH HY-100-A ACTUATOR ZURN Z-024-NB CARRIER		1/6	WATER HAMMER ARRESTOR JR. SMITH HYDROTROL FIG. NO. 5030, 1"	
1/6	WATER CLOSET - WALL HUNG BLOWOUT JET TOILET, HEAVY GAGE 304 STAINLESS STEEL CONSTRUCTION, WHITE OPEN FRONT HINGED SEAT	1/6 GPF MOUNT RIM 18" AFF	1/6	MOP SINK	WITH VACUUM BREAKER HOSE THREAD OUTLET AND PAIL HOOK, AND INTEGRAL STOPPS ROUGH CHROME PLATE
1/6	ACORN DURA-WARE 2100-ADA-I-CN-HS BLOAN 982-1/6 FLUSH VALVE WITH HY-100-A ACTUATOR ZURN Z-024-NB CARRIER		1/6	FLORESTONE MODEL 91 CHICAGO 811	
1/6	URINAL - WALL HUNG STRADDLE TYLE, HEAVY GAGE 304 STAINLESS STEEL CONSTRUCTION	1/6 GPF MOUNT LIP 18" AFF	1/6	FLOOR SINK JR. SMITH 3002NB	12-1/2" NICKEL BRONZE TOP W/COYE STRAINER
1/6	ACORN PENAL WARE 1100-B-I BLOAN 982-1/6 FLUSH VALVE WITH HY-100-A ACTUATOR ZURN Z-022 F CARRIER		1/6	3 COMPARTMENT SINK ADVANCE TABCO 33-3-54-24RL CHICAGO *445-D10	BUNG SP/OUT, SPRAYERATOR TAIL PIECES WITH STRAINERS
1/6	LAVATORY - WALL HUNG, FRONT ACCESS HEAVY GAGE 304 STAINLESS STEEL CONSTRUCTION	0.75 GPM P-TRAP IN PLUMBING CHASE LAY HUNG WITH THREE BOLTS FULL DEPTH OD WALL	1/6	HAND SINK ADVANCE TABCO 1-P8-22 CHICAGO 151A-665	
1/6	ACORN DURA-WARE 1803-ADA-I-D18-3-GE ZURN Z-036 CARRIER ACORN GE GRID STRAINER/CLOSE ELBOW		1/6	WATER HEATER - 40 GAL CAPACITY, GLASS LINED TANK (2) 43 KU ELEMENTS, ASME APPROVED RELIEF VALVE	
1/6	FLOOR DRAIN MCF -440 DB "PRIME RITE" - PRECISION PLUMBING PRODUCTS	C&T IRON BODY/FLASHING COLLAR, NICKEL BRONZE ADJUSTABLE STRAINER AND TRAP PRIMER CONNECTION		A.O. SMITH PEHT-10	

KEY	
---	COLD WATER
---	HOT WATER
---	SEWER
---	VENT
ψ	HOSE BIB
U	DROP
O	RISE



1 DOMESTIC WATER PLAN
1/4"=1'



1 DRAIN, WASTE, VENT PLAN
1/4"=1'

- PLUMBING PLAN NOTES
- 1 2" C.W. UP. RUN JUST BELOW CEILING IN MECHANICAL CHASE. PROVIDE SHUT OFF VALVE.
 - 2 WATER SUPPLY LINE BELOW AND UP TO FIXTURES - WOMENS ROOM.
 - 3 WATER SUPPLY LINE AT CEILING AND DOWN TO FIXTURES - MENS ROOM.



REVISORS

3/15/02	ELEC. PANEL
7/25/02	AS BUILT CORRECTIONS

CONSULTANT

DEC INC.
2800 SO. RANCHO RD.
LAS VEGAS, NEVADA 89102
(702) 871-5154
FAX: (702) 871-0810

DEPARTMENT OF PUBLIC WORKS

BONANZA-SANDHILL PARK
Concession Building
PLUMBING PLAN

OWNER: CITY OF LAS VEGAS
DEPARTMENT OF PUBLIC WORKS
ARCHITECTURAL SERVICES

400 EAST STEWART AVENUE
LAS VEGAS, NEVADA 89101
PHONE: (702) 229-8335
FAX: (702) 382-5232
TDD: (702) 386-9108

DRAWN: JL
FILE:
DATE: 5/6/02
SCALE: 1/4" = 1'-0"
SHEET NO: 02.153410-1
CLVDWG NO: 65069
SHEET NO: 57

STAMP

RCB-P1

66612

C:\Projects\01_Comer\020116_CIV_BONANZA-SANDHILL (as built)\MECH-1.dwg, 07/25/2003 02:24:25 PM, Administrator