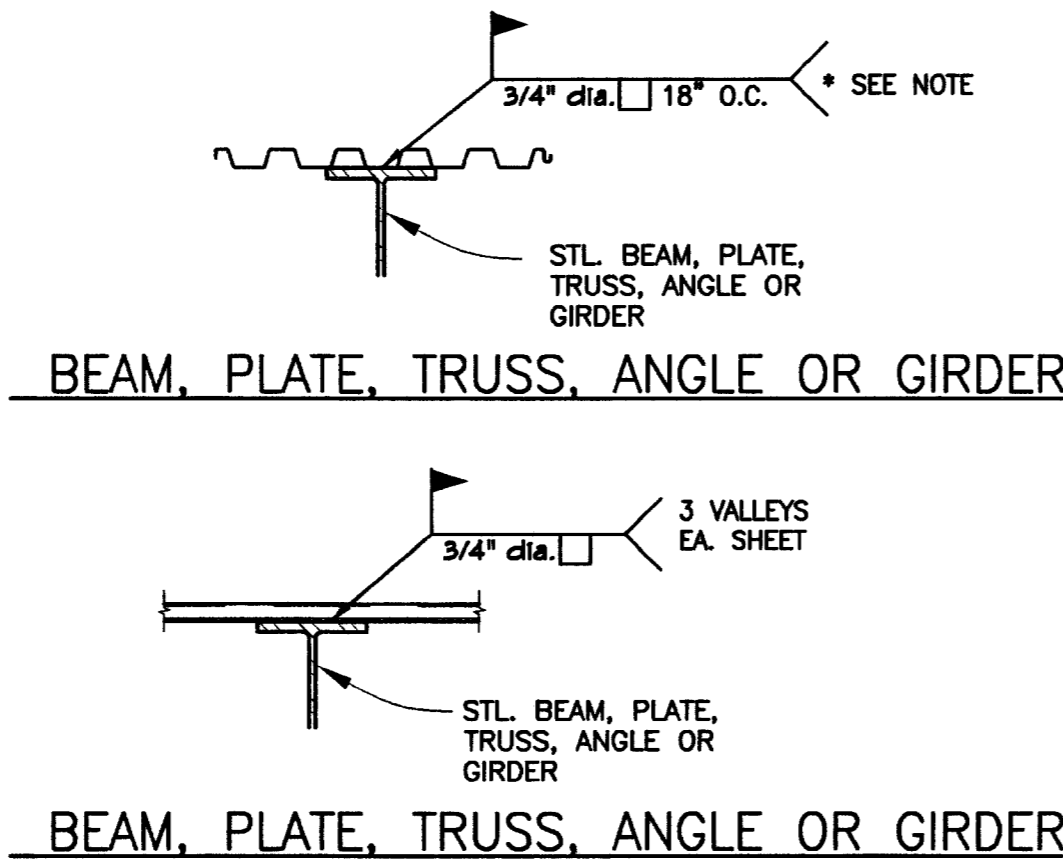


NOTE: DECKING MUST BE CONTINUOUS OVER A MINIMUM OF TWO SPANS.

16 STEEL DECK DETAIL

3/4"

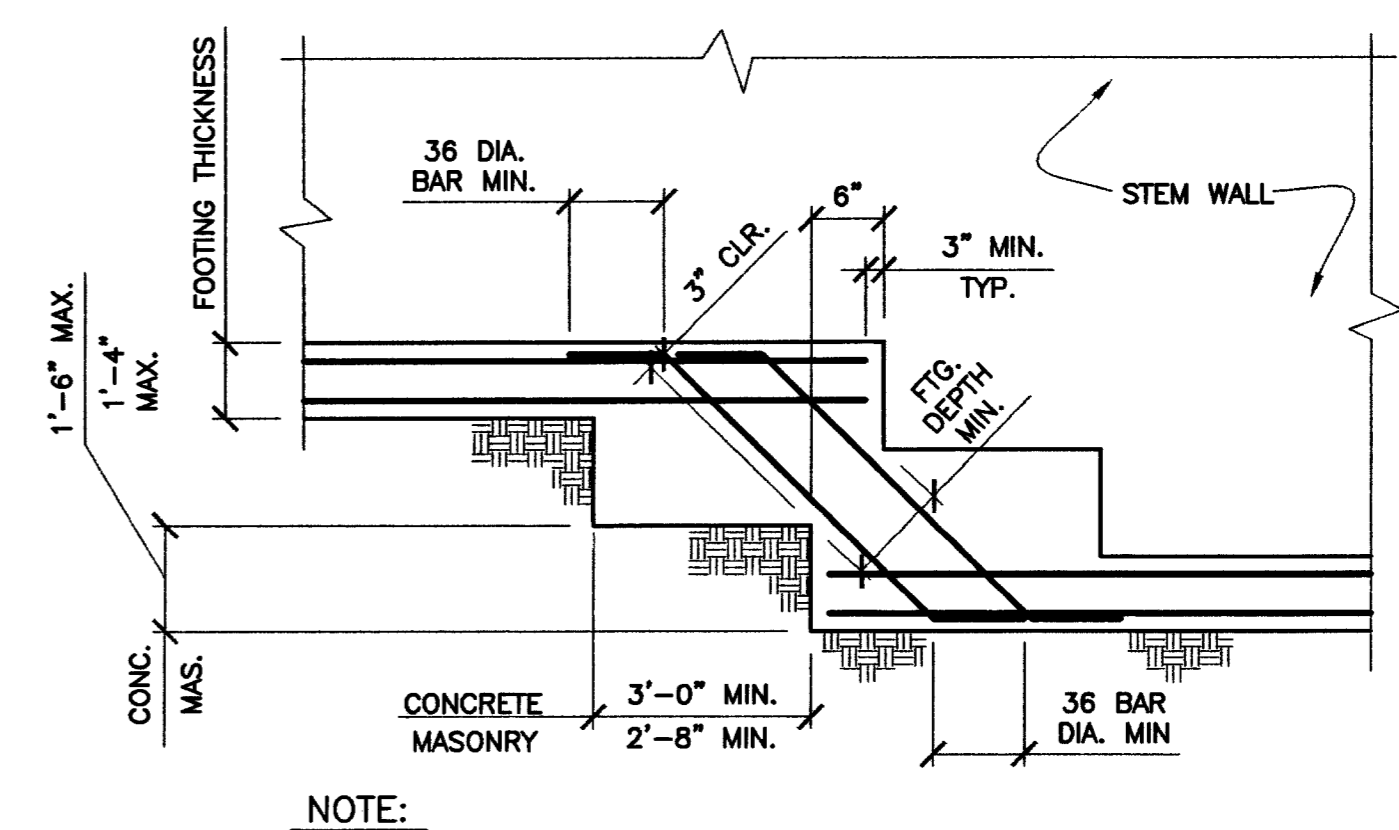


SIZE	EMBEDMENT
1/2" DIA.	4"
5/8" DIA.	4"
3/4" DIA.	5"
7/8" DIA.	6"
1" DIA.	7"

FOR EMBEDMENT OF BOLTS USE SCHEDULE UNLESS NOTED OTHERWISE.

8 TYPICAL ANCHOR BOLT EMBEDMENT DETAIL

3/4"

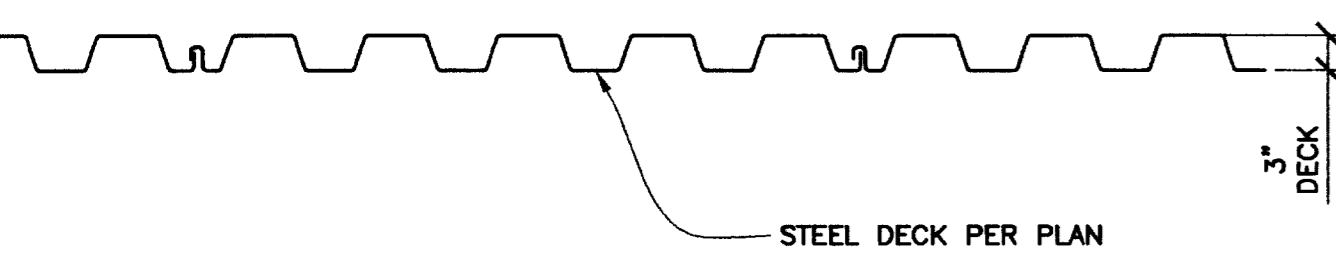


NOTE: REINFORCEMENT BARS SHALL BE THE SAME AS FOOTING REINFORCEMENT.

4 SLOPED FOOTING DETAIL

3/4"

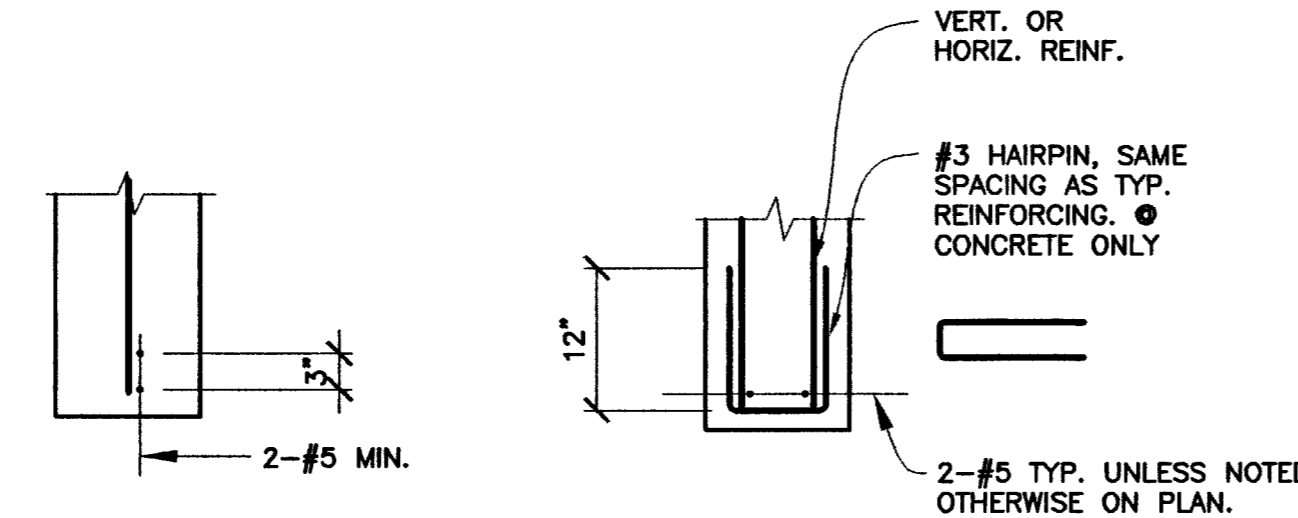
012-0012



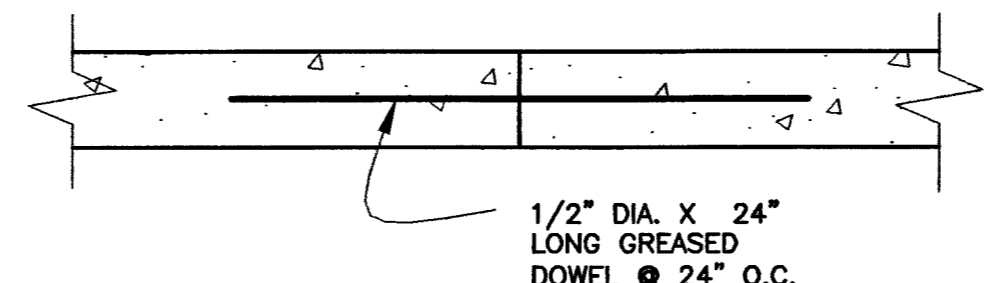
- DECK SHALL BE CONT. ACROSS A MIN. OF 2 SPANS. MAX. SPAN = 8'-0".
- MIN. DECK BEARING TO BE 2".

15 STEEL DECK DETAIL

3/4"



A SECTION



NOTE: THIS DETAIL SHALL BE REQUIRED AND SHALL TAKE PRECEDENCE OVER ALL OTHER SLAB JOINT DETAILS IN ALL CASES WHEN 30 MIN. OR MORE IS ALLOWED BETWEEN POURS IN ANY CONTINUOUS SLAB OR WALKWAY

6 TYPICAL SLAB CONSTRUCTION/CONTROL JOINT DETAIL

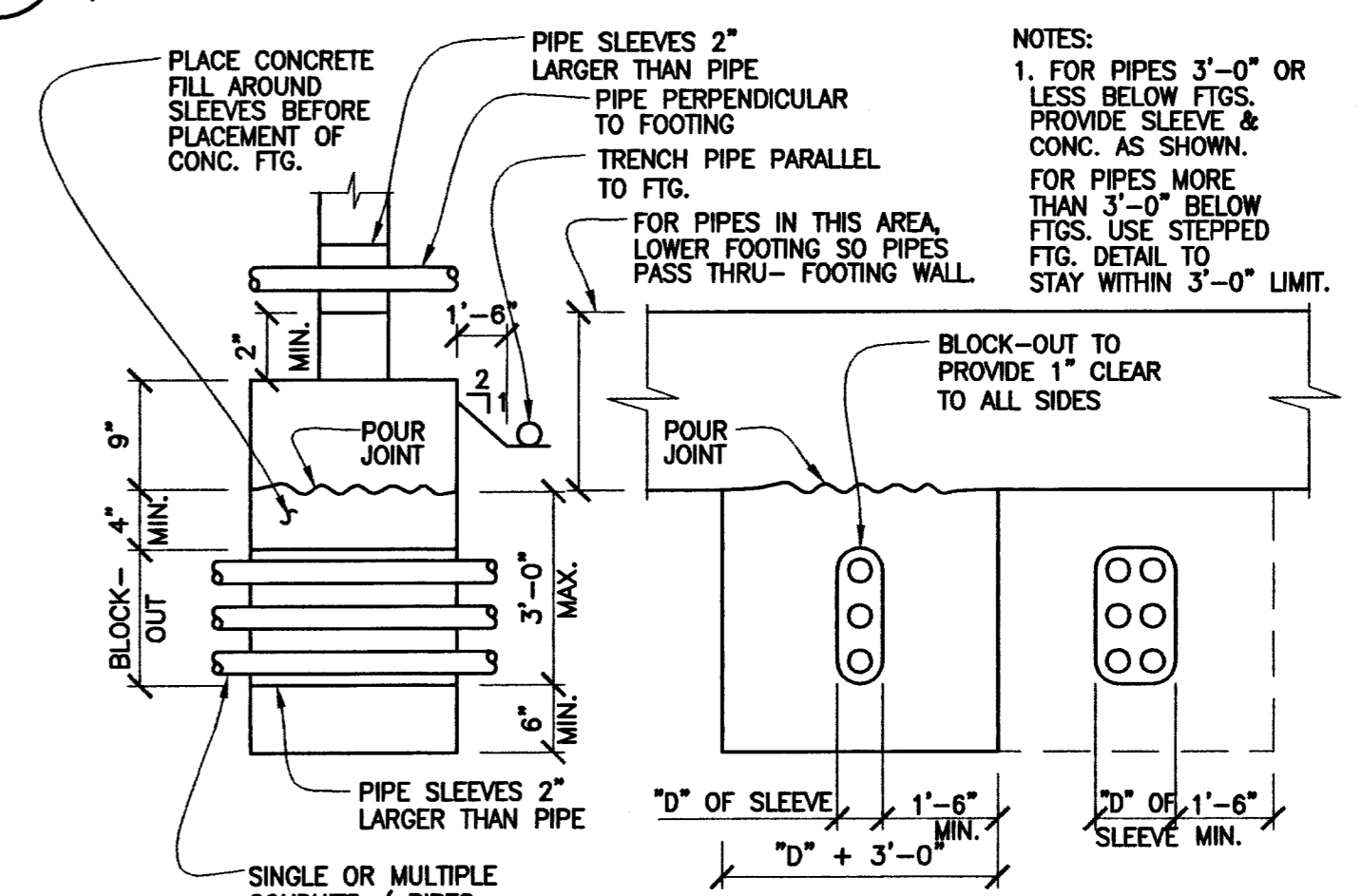
3/4"

JD014-0006

3 PIPES THRU FOUNDATION

3/4"

012-0011

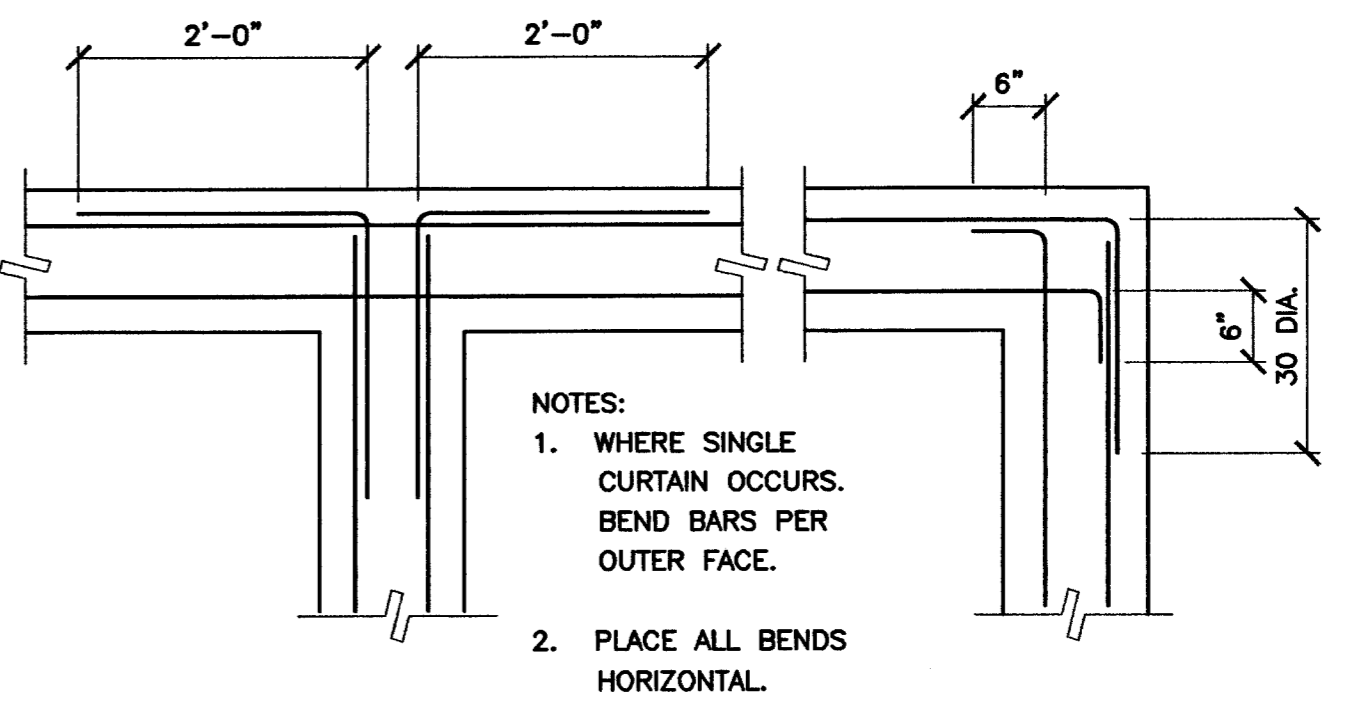


NOTES:
1. FOR PIPES 3'-0" OR LESS BELOW FTGS. PROVIDE SLEEVE & CONC. AS SHOWN.
FOR PIPES MORE THAN 3'-0" BELOW FTGS. USE STEPPED FTG. DETAIL TO STAY WITHIN 3'-0" LIMIT.

2 TYPICAL REBAR CORNERS & INTERSECTIONS

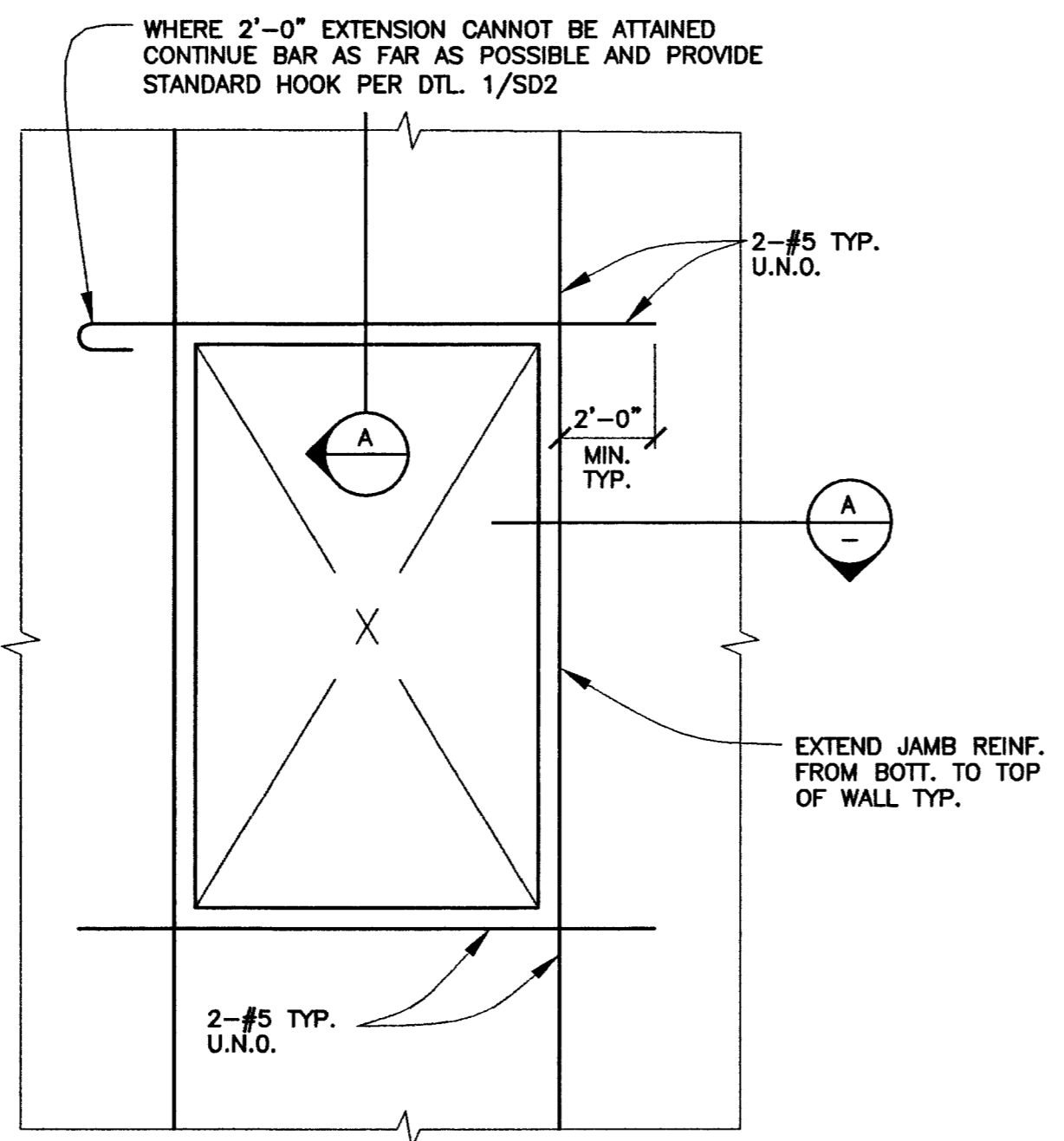
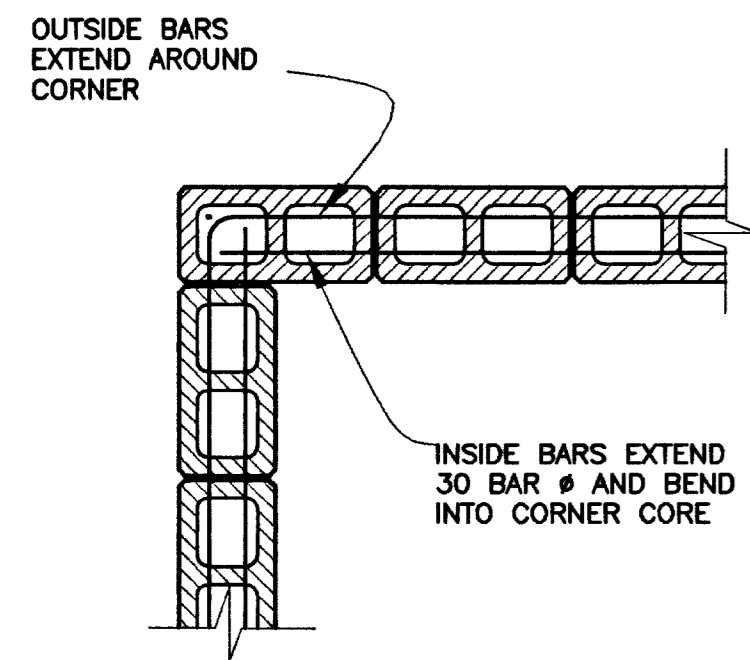
3/4"

012-0002



14 CMU CORNER DETAIL

3/4"

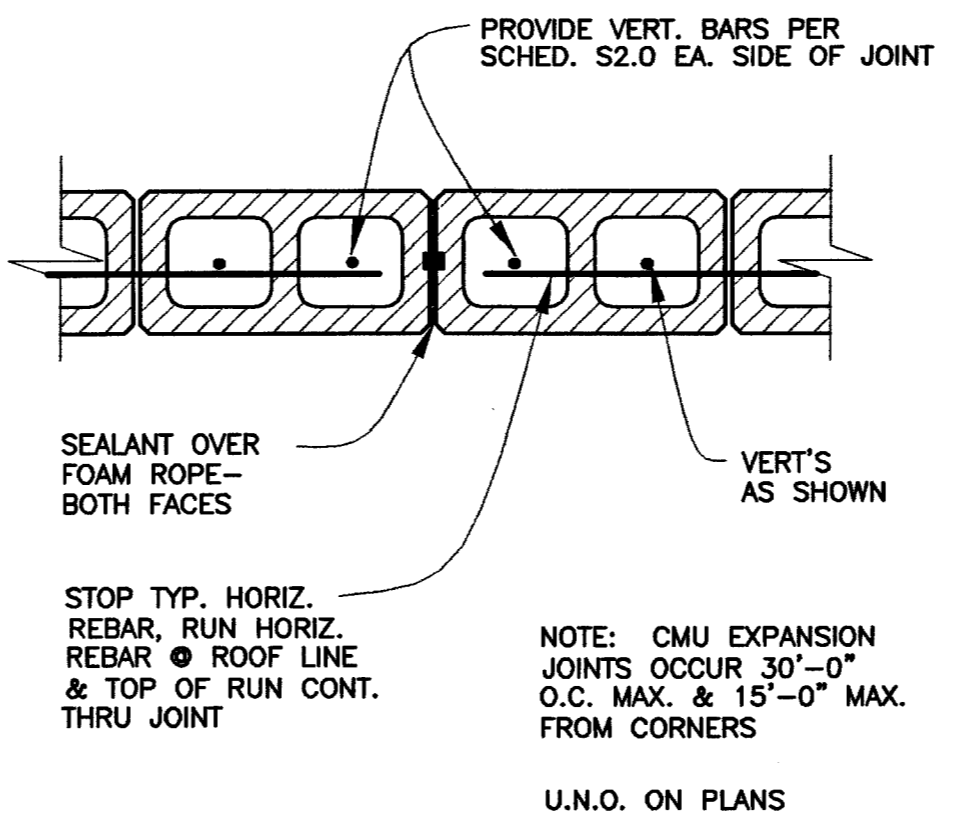


NOTE: ALL REINFORCING AROUND OPENING IS IN ADDITION TO STANDARD WALL REINFORCING.

5 TYPICAL CMU EXPANSION JOINT

3/4"

014-0001



13 CMU INTERSECTION DETAIL

3/4"

9 TYPICAL REINFORCING @ OPENING

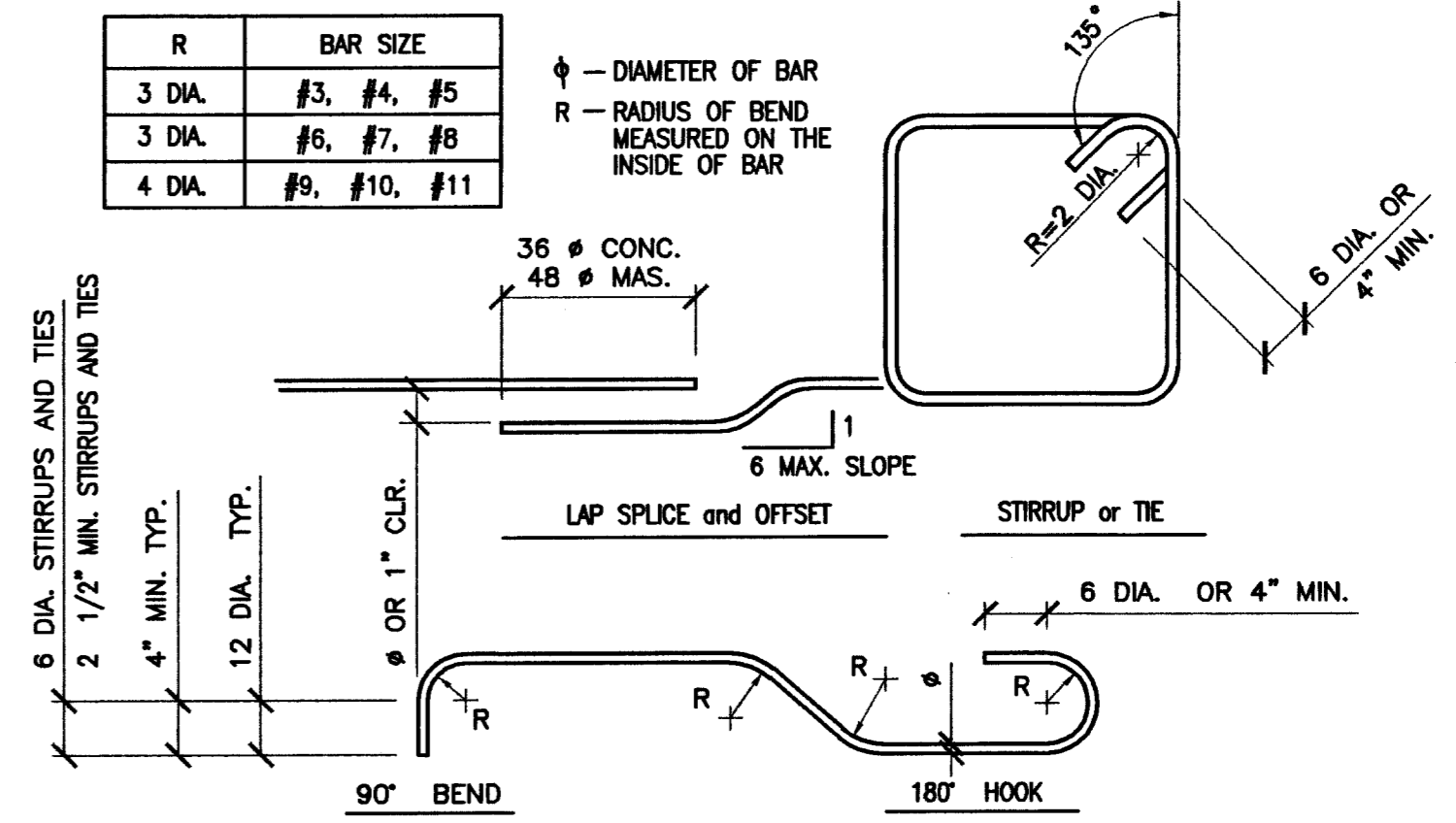
3/4"

012-0007

1 TYPICAL REBAR BENDS

3/4"

012-0001



REVISIONS
7/23/02

CONTRACT
012-0012

DEUC INC.
2900 SO. RANCHO RD.
LAS VEGAS, NEVADA 89108
(702) 871-5154
702#-080148

BONANZA-SANDHILL PARK
Concession Building
FOUNDATION DETAILS

STAMP

AUG 22 2012

OWNER: CITY OF LAS VEGAS
DEPARTMENT OF PUBLIC WORKS
ARCHITECTURAL SERVICES

400 EAST STEWART AVENUE
LAS VEGAS, NEVADA 89101
PHONE: (702) 229-8535
FAX: (702) 262-8332
TDD: (702) 266-8108

DRAWN: ALM
FILE:
DATE: 8-16-02
SCALE: NONE
REV NO: 01, 03, 04, 07
CLYDRE NO: 88088

SIT NO
RCB-SD1.0

CONTRACTOR'S REPRESENTATIVE SHALL BE RESPONSIBLE FOR THE ACCURACY OF THE INFORMATION PROVIDED AND FOR THE CONSTRUCTION OF ANY OTHER PROJECTS IN A.C. 003.000