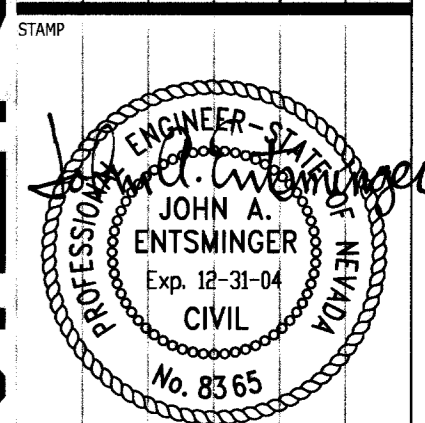




REVISIONS
1. ADDED RTC BUS STOP 12-24-02

CONSULTANT
MARTIN & MARTIN
MARTIN & MARTIN
Civil Engineers
2101 South Jones Blvd.
Suite 120
Las Vegas, Nevada 89146
Phone (702) 248-8000
Fax (702) 248-8070
E-MAIL MARTMART@LVCM.COM

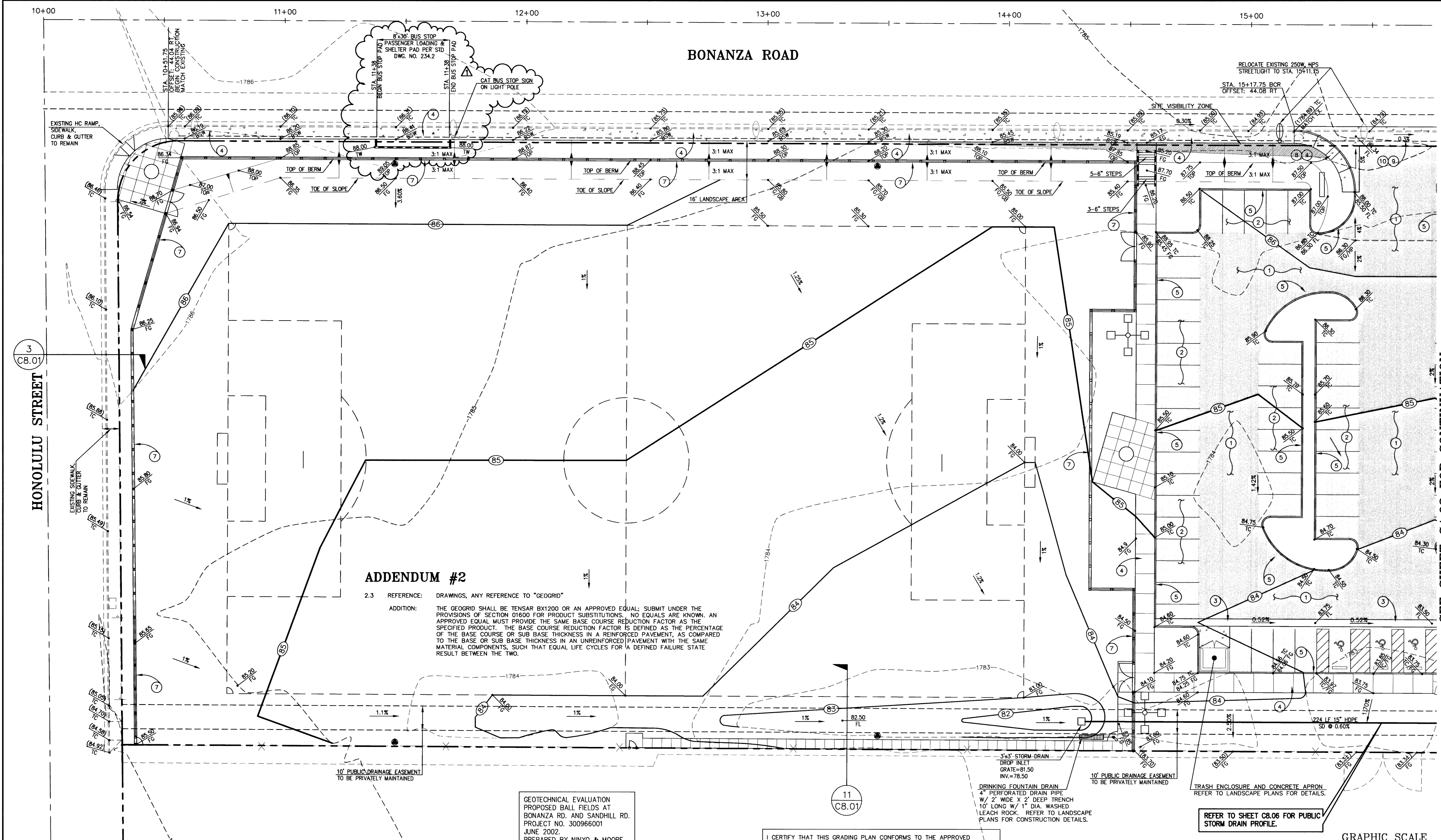
BONANZA-SANDHILL PARK
GRADING PLAN



OWNER: CITY OF LAS VEGAS
DEPARTMENT OF PUBLIC WORKS
ARCHITECTURAL SERVICES

Table with project details: DRAWN: V.J.W./J.B.U., FILE: 1925GRADING.DWG, DATE: 8-23-02, SCALE: 1"=20', SHEET NO: 8, SHEET OF: 21, PROJECT NO: 02.15341.07, CIVIL NO: 650.69

AS BUILTS



ADDENDUM #2
2.3 REFERENCE: DRAWINGS, ANY REFERENCE TO "GEOGRID"
ADDITION: THE GEOGRID SHALL BE TENSAR BX1200 OR AN APPROVED EQUAL; SUBMIT UNDER THE PROVISIONS OF SECTION D1600 FOR PRODUCT SUBSTITUTIONS. NO EQUALS ARE KNOWN. AN APPROVED EQUAL MUST PROVIDE THE SAME BASE COURSE REDUCTION FACTOR AS THE SPECIFIED PRODUCT. THE BASE COURSE REDUCTION FACTOR IS DEFINED AS THE PERCENTAGE OF THE BASE COURSE OR SUB BASE THICKNESS IN A REINFORCED PAVEMENT, AS COMPARED TO THE BASE OR SUB BASE THICKNESS IN AN UNREINFORCED PAVEMENT WITH THE SAME MATERIAL COMPONENTS, SUCH THAT EQUAL LIFE CYCLES FOR A DEFINED FAILURE STATE RESULT BETWEEN THE TWO.

GEOTECHNICAL EVALUATION
PROPOSED BALL FIELDS AT
BONANZA RD. AND SANDHILL RD.
PROJECT NO. 300966001
JUNE 2002.
PREPARED BY NINYO & MOORE

I CERTIFY THAT THIS GRADING PLAN CONFORMS TO THE APPROVED DRAINAGE STUDY FOR THIS SITE ON FILE AT THE CITY OF LAS VEGAS
JOHN ENTSMINGER, P.E., PROJECT MANAGER DATE PERMIT # XXXXXXXX

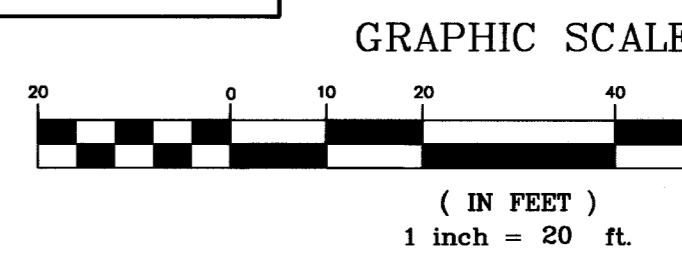
- CONSTRUCTION NOTES**
1. CONSTRUCT 3" A.C. PAVEMENT OVER 15" TYPE II AGGREGATE BASE OVER 8" STRUCTURAL FILL OVER A GEOGRID LAYER.
2. CONSTRUCT 2 1/2" A.C. PAVEMENT OVER 8" TYPE II AGGREGATE BASE OVER 8" STRUCTURAL FILL OVER A GEOGRID LAYER.
3. CONSTRUCT 3' WIDE CONCRETE VALLEY GUTTER PER DETAIL 9/C8.01, SHEET 16 OF 21.
4. CONSTRUCT CONCRETE SIDEWALK (WIDTH PER PLANS) PER STD. DWG. NO. 234, DETAIL 17/C8.02.
5. CONSTRUCT "A" TYPE CURB AND GUTTER PER STD. DWG. NO. 219, DETAIL 14/C8.02.
6. CONSTRUCT "L" TYPE CURB AND GUTTER PER STD. DWG. NO. 216, DETAIL 15/C8.02.
7. CONCRETE MOW CURB, REFER TO LANDSCAPE PLANS FOR DETAILS.
8. CONSTRUCT SIDEWALK RAMP PER STD. DWG. NO. 235 CASE III, DETAIL 18/C8.02 (A=B=8' UNLESS NOTED OTHERWISE).
9. CONSTRUCT 8" CONCRETE VALLEY GUTTER PER STD. DWG. NO. 228, DETAIL 22/C8.02.
10. CONSTRUCT COMMERCIAL DRIVEWAY PER STD. DWG. NO. 222A, DETAIL 31/C8.04.
11. CONSTRUCT 12" WIDE SIDEWALK UNDERDRAIN PER STD. DWG. NO. 236, DETAIL 16/C8.02.

BASIS OF BEARING
S 89°46'25"E, BEING THE NORTH LINE OF THE NE 1/4 OF THE, NW 1/4, SECTION 31, T20S, R62E OF THE M.D.M., CLARK COUNTY, NEVADA, AS DELINEATED ON THAT CERTAIN PARCEL MAP RECORDED IN FILE 84, PAGE 28 ON DECEMBER 28, 1995 AS INSTRUMENT NO. 01450.

BENCHMARK
CLARK COUNTY BM 0021955W6 RIVET AND SQUARE ALUMINUM PLATE IN TOP OF CURB, NE OF OWENS AND VRGL.
(551.1961 m) 1808.38 ft

GENERAL NOTE:
IT IS THE CONTRACTORS RESPONSIBILITY TO FILE A NOTICE OF INTENT/REQUEST TO BE INCLUDED IN THE STORM WATER GENERAL PERMIT, AND SUBMIT THE ASSOCIATED STORMWATER POLLUTION PREVENTION PLAN (SPPP) AS REQUIRED BY FEDERAL LAW, AND MONITORED BY THE NEVADA DIVISION OF ENVIRONMENTAL PROTECTION.

LEGEND
Table with columns for EXISTING and PROPOSED symbols for various utilities and features: RIGHT-OF-WAY, WATER LINE, SANITARY SEWER LINE, GAS LINE, STORM DRAIN, POWER LINE / POWER POLE, TELEPHONE LINE, FIRE HYDRANT, WATER VALVE, METERS / PULL BOXES, REDUCER, MANHOLE, CLEANOUT, STREET LIGHTS, SCREEN / RETAINING WALL, TRASH ENCLOSURE, FENCE, FINISH FLOOR, CLEANOUT INVERT ELEVATION, FLOW LINE, FINISH GRADE, BACK OF SIDEWALK, TOP OF CURB, TOP OF WALL, A.C. PAVING, TYPE "L" CURB & GUTTER, TYPE "A" CURB, CONCRETE.



AVOID CUTTING UNDERGROUND UTILITY LINES. IT'S COSTLY.
Call before you Dig- 1-800-227-2600 UNDERGROUND SERVICE ALERT (U.S.A.)
AVOID OVERHEAD POWER LINE CONTACT
Call before you OVERHEAD 1-702-593-6111 NEVADA POWER ENVIRONMENT AND SAFETY SERVICES DEPARTMENT

MARTIN & MARTIN ASSUMES NO RESPONSIBILITY FOR EXISTING UTILITY LOCATIONS AND ELEVATIONS. THE UTILITIES SHOWN ON THIS DRAWING HAVE BEEN PLOTTED FROM THE BEST AVAILABLE INFORMATION. IT IS, HOWEVER, THE CONTRACTOR'S RESPONSIBILITY TO FIELD VERIFY THE LOCATION AND ELEVATION OF ALL UTILITIES PRIOR TO THE COMMENCEMENT OF ANY CONSTRUCTION. CONTRACTOR TO FIELD VERIFY ALL EXISTING SITE CONDITIONS PRIOR TO CONSTRUCTION. IF A CONFLICT EXISTS BETWEEN WHAT IS SHOWN ON THESE DRAWINGS AND WHAT EXISTS IN THE FIELD, THE CONTRACTOR IS TO NOTIFY THE ARCHITECT OR ENGINEER IMMEDIATELY.

66560