

Call before you OVERHEAD
1-702-593-6111

Call before you Dig
1-800-227-2600

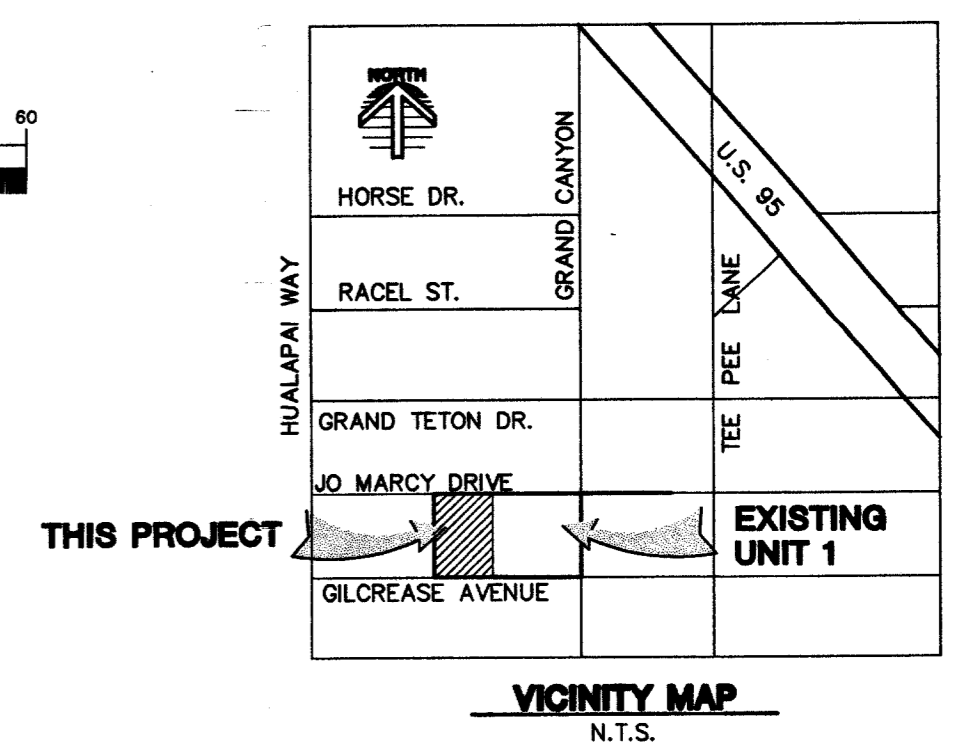
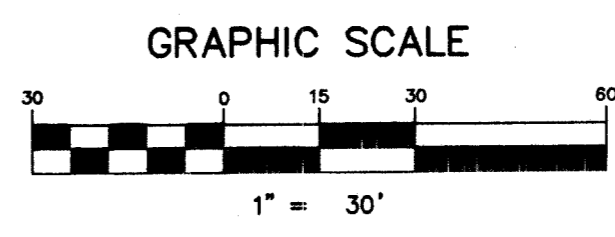
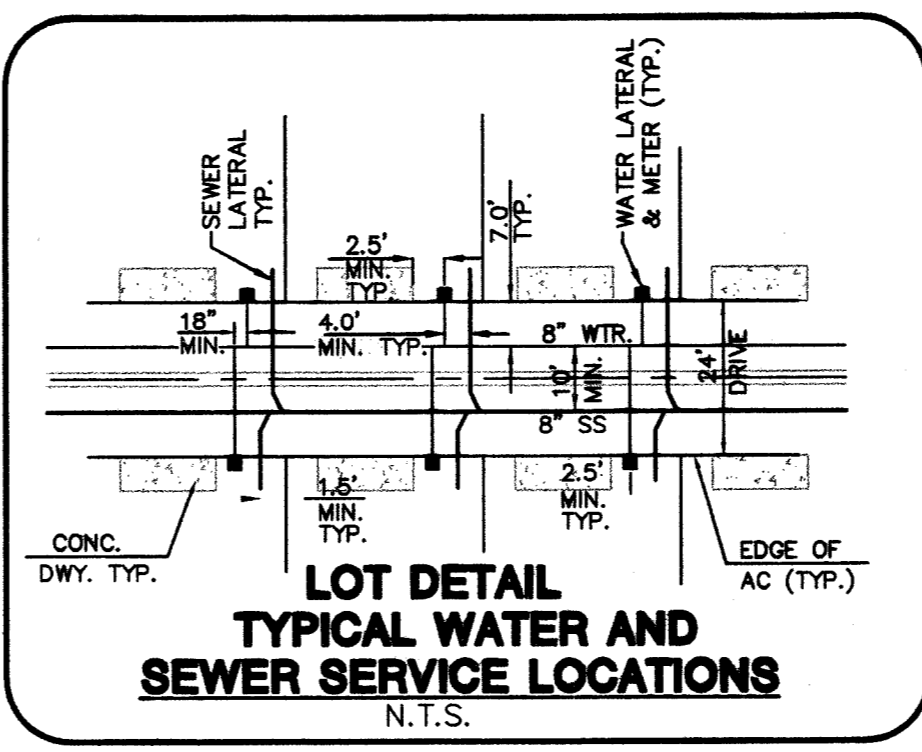
PROJECT BENCHMARK
PROJECT DATUM: NORTH AMERICAN VERTICAL DATUM OF 1988 (NAVD83)
CITY OF LAS VEGAS BENCHMARK: OCS017N6
ELEVATION: 799.0957 METERS (2,621.67 FEET)
RIVET AND SQUARE ALUMINUM PLATE IN TOP CENTER OF HEADWALL ON THE WEST SIDE OF U.S. 95 NEAR MILE MARKER 90.15.

BASIS OF BEARING
SOUTH 89°10'24" EAST - BEING THE SOUTH LINE OF THE NORTHWEST QUARTER (NW 1/4) OF THE NORTHEAST QUARTER (NE 1/4) OF SECTION 18, TOWNSHIP 19 SOUTH, RANGE 60 EAST, M.D.M., CLARK COUNTY, NEVADA AS SHOWN BY THAT RECORD OF SURVEY ON FILE IN THE OFFICE OF THE COUNTY RECORDER, CLARK COUNTY, NEVADA, IN FILE 114 OF SURVEYS, AT PAGE 57.

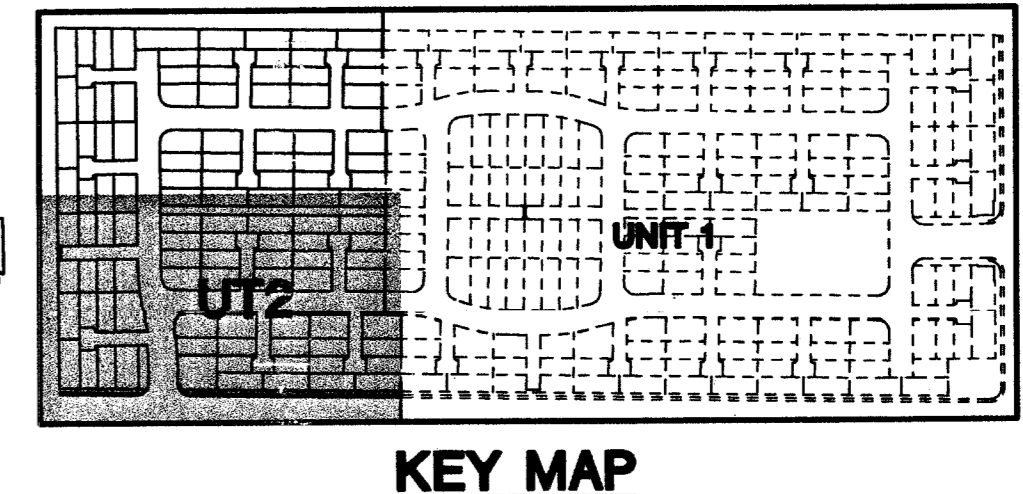
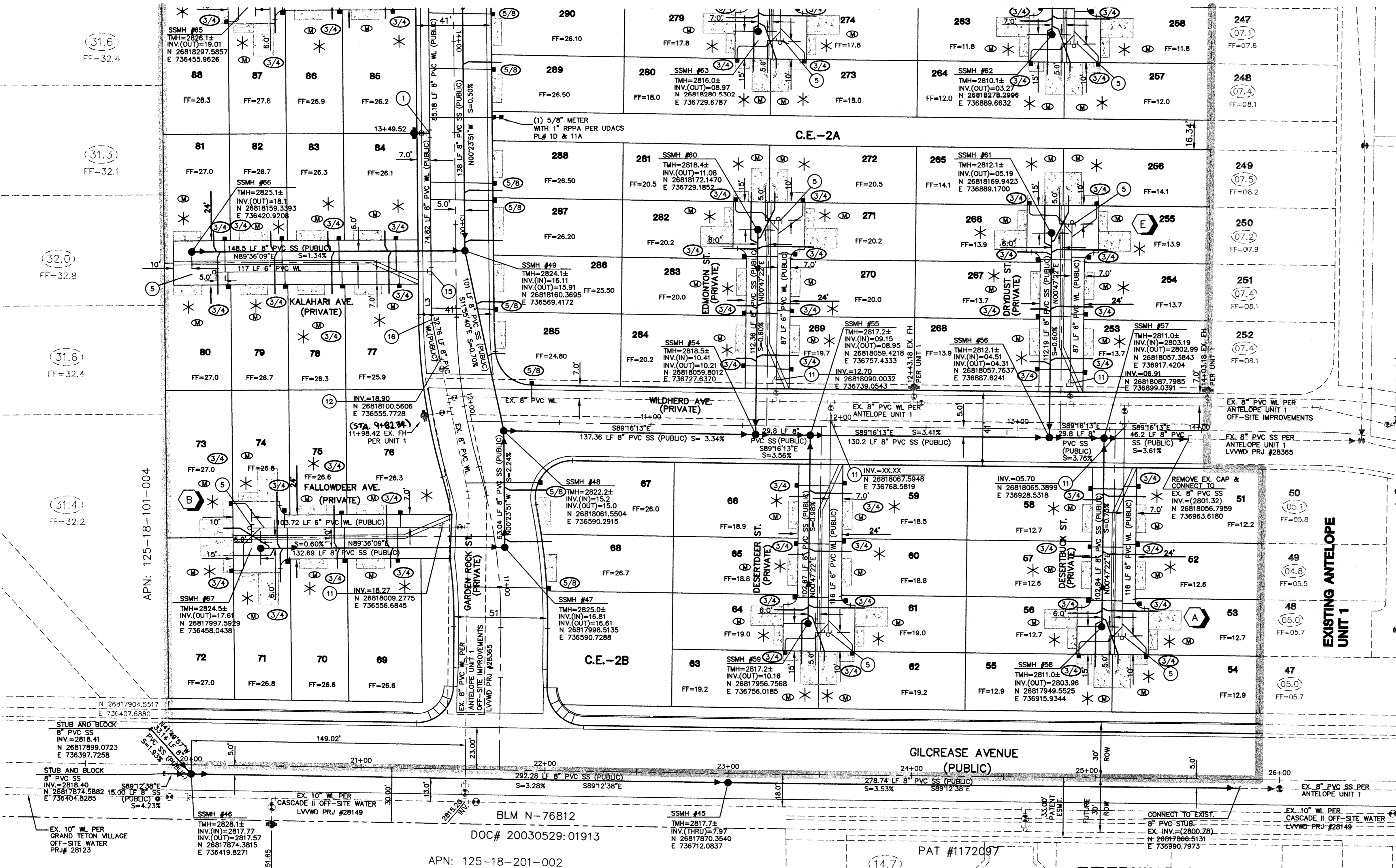
NOTE
ALL STREETS ARE PRIVATE DRIVES UNLESS OTHERWISE NOTED. ALL PRIVATE STREETS AND DRIVES ARE P.U.E., PUBLIC SEWER EASEMENTS, AND PUBLIC DRAINAGE EASEMENTS TO BE PRIVATELY MAINTAINED BY HOA.

NOTE
CONTRACTOR SHALL VERIFY HORIZONTAL AND VERTICAL ALIGNMENT OF EXISTING UTILITIES AND TO NOTIFY THE DESIGN ENGINEER IMMEDIATELY OF ANY DISCREPANCIES PRIOR TO CONSTRUCTION.

NOTE
FOR LOTS 51-66 BLOCK A, 69-100, 105-120 BLOCK B, & 253-284 BLOCK C
INSTALL ARMORCAST METER BOXES PART # A6000485 (METER BOX) PART # A6000484R (COVER)



SEE SHEET UT1



LEGEND \ ESTIMATE OF QUANTITIES

WATER (PUBLIC)

- ① STD. FIRE HYDRANT (INCLUDES PIPES, VALVE, TEE, & RISER) PER UDACS PL #7 3 EA
- ② 8" TEE 1 EA
- ③ 8" x 6" REDUCER 1 EA
- ④ CAP & 2" BLOW-OFF PER UDACS PL #4A 12 EA
- ⑤ 8" GATE VALVE 2 EA
- ⑦ 4" 6" 45° ELBOW 4 EA
- ⑪ REMOVE EXISTING CAP AND CONNECT TO EXISTING 6" PVC WL PER UDACS PL #4A
- ⑫ REMOVE EXISTING CAP AND CONNECT TO EXISTING 8" PVC WL PER UDACS PL #4A
- ⑬ 8" x 6" CROSS 2 EA
- ⑭ 6" TEE 1 EA
- ⑮ 8" x 6" TEE 1 EA
- ⑯ 8" 11.25" BEND 1 EA
- ⑰ 4" 90° BEND 1 EA

SEWER

- ⑤/8 1" COPPER WATER SERVICE W/ 5/8" METER PER UDACS PLATE 1B 14 EA
- ③/4 1" COPPER WATER SERVICE W/ 3/4" MVR 30 METER PER UDACS PLATE 1B 96 EA
- 8" PVC WATER LINE (PUBLIC) 698 LF
- 6" PVC WATER LINE (PUBLIC) 1402 LF
- 5/8" METER WITH 1" RPPA PER UDACS PL #1D & 11A 1 EA
- STD. MANHOLE (PUBLIC) 29 EA
- 8" SEWER MAIN (PUBLIC) 3259 LF
- 4" SERVICE LATERALS (PRIVATE) 1690 LF
- BACKWATER VALVES (PRIVATE) 2 EA

APN: 125-18-101-004

APN: 125-18-201-002

APN: 125-18-201-012

APN: 125-18-201-014

[Signature] 1/29/04
DATE

REDUCED PRESSURE PRINCIPLE ASSEMBLY (RPPA)
APPROVED REDUCED PRESSURE PRINCIPLE ASSEMBLY(S) SHALL BE INSTALLED PER THE UDACS PLATE NO. 11A. NO WATER SHALL BE TAKEN FROM A SERVICE REQUIRING BACKFLOW PREVENTION UNTIL THE REDUCED PRESSURE PRINCIPLE ASSEMBLY HAS BEEN SUCCESSFULLY TESTED BY THE LVVWD.

FIRE SPRINKLER SYSTEM SHALL BE PLUMBED TO MASTER TOILET. NO EXCEPTIONS ALLOWED.

APPROVALS
[Signature] 3/1/04
LAS VEGAS VALLEY WATER DISTRICT
DATE

GREYSTONE HOMES
CITY OF LAS VEGAS, NEVADA
2727 SOUTH RAINBOW BOULEVARD LAS VEGAS, NEVADA 89146-5148
PH. (702) 873-7550 FAX (702) 362-2597

UTILITY PLAN
ANTELOPE UNIT 2

APPROVALS
DESIGNED BY: *[Signature]* AUG. 2003
CHECKED BY: *[Signature]* AUG. 2003
PROJECT NO.: E889-2
SCALE: 1" = 30' HORIZ. VERT. N/A

PROFESSIONAL ENGINEER'S SEAL
AARON M. [Signature]
CIVIL ENGINEER
No. 15073 (V) NV

SHEET
UT2
6 OF 25 SHEETS
DRAWING NO.
10714781-2

PROJECT NAME: Antelope Unit 2
This project water plan complies with the Las Vegas Valley Water District's technical requirements. However, this water plan is **NOT APPROVED FOR CONSTRUCTION**.

at this time and this signature does not provide or imply a water commitment.

LVVWD *[Signature]* DATE 1/27/04 ESN.052