

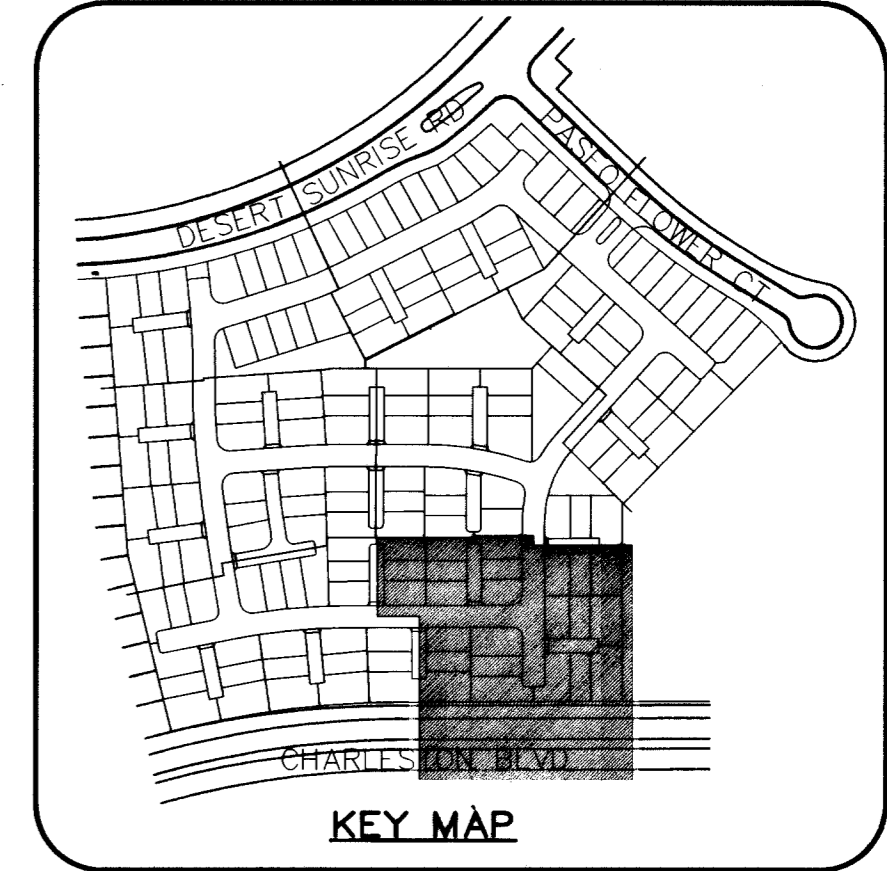
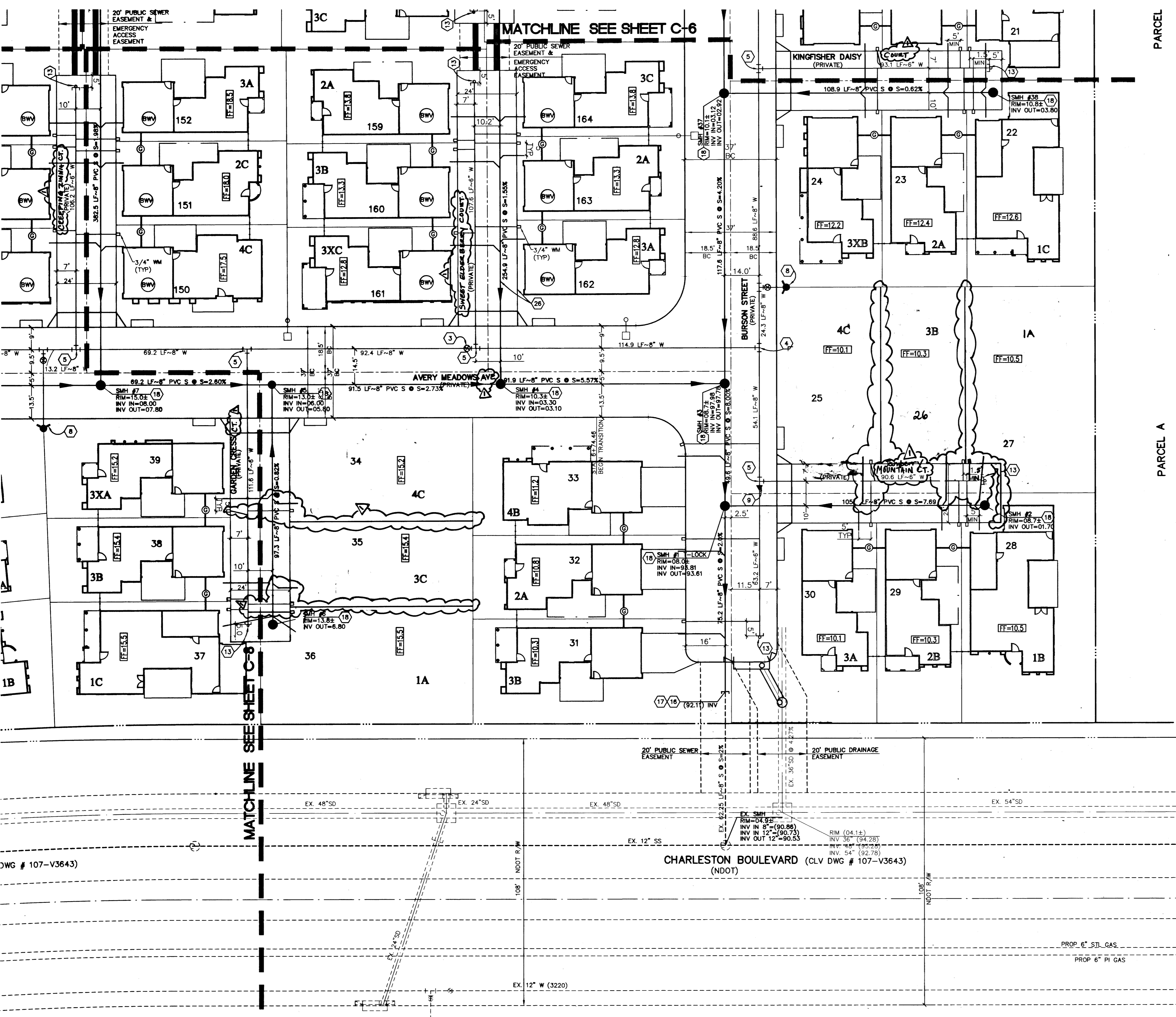
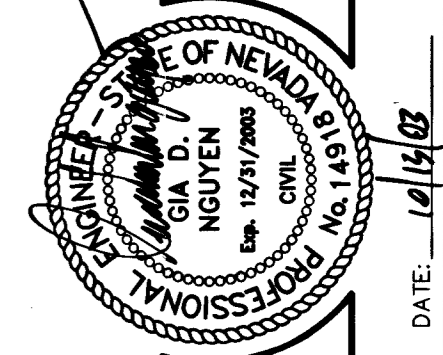
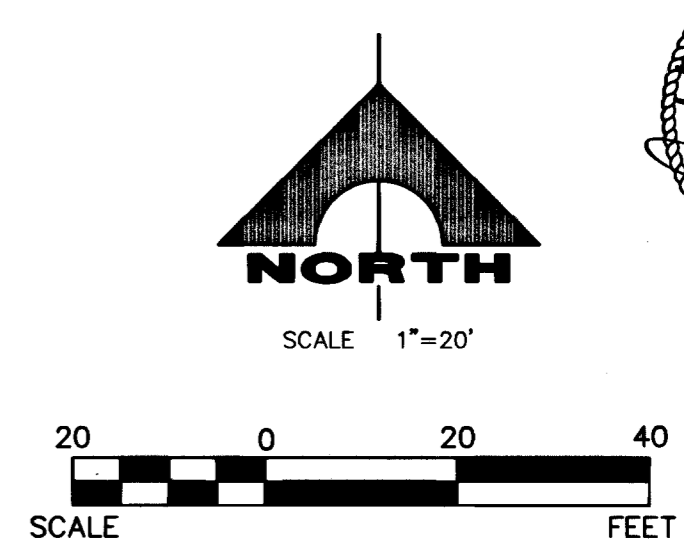
G.C. WALLACE, INC. ASSUME NO RESPONSIBILITY FOR EXISTING UTILITY SHOWN OR NOT SHOWN. THE UTILITIES SHOWN ON THIS DRAWING HAVE BEEN PLOTTED FROM RECORD INFORMATION AND ARE FOR THE CONVENIENCE OF THE CONTRACTOR ONLY. IT IS THE CONTRACTOR'S RESPONSIBILITY TO FIELD VERIFY THE LOCATION AND DEPTH OF ALL RELEVANT UTILITIES PRIOR TO COMMENCEMENT OF CONSTRUCTION. IF A CONFLICT OR DISCREPANCY IS DISCOVERED, THE CONTRACTOR SHALL NOTIFY THE ENGINEER IN WRITING IMMEDIATELY.

ALL LOTS MAY HAVE WATER PRESSURE IN EXCESS OF 80 PSI. THE UNIFORM PLUMBING CODE REQUIRES THAT INDIVIDUAL, ON-SITE (PRIVATE), PRESSURE REDUCING VALVES BE INSTALLED WHENEVER THE PRESSURE EXCEEDS 80 PSI. PRVs ARE THE DEVELOPER'S RESPONSIBILITY AND WILL NOT BE INSPECTED OR INCLUDED IN THE ACCEPTANCE OF LVWD FACILITIES.

ALL SEWER/STORM DRAINS CROSSING WATER LINES MUST CONFORM TO SECTION 2.19 OF THE UNIFORM DESIGN AND CONSTRUCTION STANDARDS FOR POTABLE WATER SYSTEMS (UDACS) FOR WATER AND STORM MAIN CROSSING AND CLEARANCES. ESN.064



Call before you Dig.  
1-800-227-2600  
UNDERGROUND SERVICE (USA)



- UTILITY NOTES**
- 1 REMOVE CAP AND BLOW OFF PER UDACS PLATE NO. 4A, NOTE NO. 1, AND CONNECT TO EXISTING MAIN. INSTALL 8" CROSS.
  - 2 INSTALL 8" GATE VALVE.
  - 3 INSTALL 8" TEE.
  - 4 INSTALL 8"x6" TEE.
  - 5 INSTALL 8"-5" BEND (MADE BY SPECIFIED FITTINGS).
  - 6 INSTALL 8"-11 1/4" BEND.
  - 7 INSTALL FIRE HYDRANT ASSEMBLY PER UDACS PLATE NO. 7. (INCLUDING 6" GATE VALVE)
  - 8 INSTALL 8"x6" REDUCER.
  - 9 INSTALL 8"-45" BEND.
  - 10 INSTALL 22 1/2" BEND - SEE PLAN FOR SIZE.
  - 11 INSTALL IRRIGATION SLEEVES UNDER DRIVEWAYS PER SUMMERLUN DWG NO. U-18 (2-4" SCH. 40 PVC) (VERIFY ALL IRRIGATION CROSSINGS WITH LANDSCAPE PLANS)
  - 12 INSTALL CAP & 2" BLOW-OFF ASSEMBLY. PER UDACS PLATE 4A.
  - 13 NOT USED.
  - 14 INSTALL 6" TEE.
  - 15 REMOVE EXISTING CAP AND CONNECT TO EXISTING SEWER LINE.
  - 16 CONTRACTOR TO VERIFY DEPTH AND LOCATION OF ALL EXISTING UTILITIES PRIOR TO CONSTRUCTION.
  - 17 INSTALL 48" DIA. SEWER MANHOLE PER SANITATION DISTRICT STANDARDS.
  - 18 INSTALL SEWER WYE PER SANITARY DISTRICT STANDARDS.
  - 19 INSTALL IRRIGATION SLEEVES UNDER DRIVEWAYS PER SUMMERLUN DWG NO. U-18 (1-6", 2-4" SCH. 40 PVC) (VERIFY ALL IRRIGATION CROSSINGS WITH LANDSCAPE PLANS)
  - 20 CUT AND CAP EX. 8" WATER AND ABANDON VALVE PER ABANDONMENT NOTE HEREON.
  - 21 INSTALL 1" WATER METER PER UDACS PLATE NO. 1D.
  - 22 INSTALL 8"x1" SERVICE SADDLE.
  - 23 INSTALL 24"x8" TAPPING TEE AND 8" TAPPING VALVE.
  - 24 INSTALL 1" RPPA PER UDACS PLATE NO. 11A.
  - 25 INSTALL WATER AND SEWER WITH CLEARANCES PER UDACS 2.19.01 SECTION B.

NOTE: ALL PRIVATE STREETS & DRIVES ARE PUBLIC SEWER EASEMENTS. PUBLIC UTILITY EASEMENTS AND PUBLIC DRAINAGE EASEMENTS TO BE PRIVATELY MAINTAINED.

THE DISTRICT WILL NOT GUARANTEE A WATER-TIGHT SHUTDOWN WHERE CONNECTIONS OR REPAIRS TO EXISTING FACILITIES ARE REQUIRED. THE CONTRACTOR SHALL ENSURE ALL LABOR AND EQUIPMENT IS AVAILABLE AT ALL TIMES TO REMOVE FUGITIVE WATER WHICH IMPEDES THE CONTRACTOR'S PERFORMANCE. IS AVAILABLE AT ALL TIMES. CONTRACTOR TO INSTALL TEMPORARY SERVICE TO ENSURE PROPER SHUTDOWN IN THE EVENT NO OTHER APPURTENANCES ARE AVAILABLE.

APPROVED FOR CONSTRUCTION  
*[Signature]* 12/03/13  
CITY OF LAS VEGAS FIRE DEPARTMENT DATE

APPROVED FOR CONSTRUCTION  
*[Signature]* 12/03/13  
LAS VEGAS VALLEY WATER DISTRICT DATE

59 735 6410 6448

CALAVERA RICHMOND AMERICAN HOMES UTILITY PLAN V  
 SHEET C-7  
 7 OF 41 SHTS  
 DATE: 12/03/13  
 DESIGN: [ ] DRAWN: [ ] CHECK: [ ] ISSUE DATE: [ ]  
 PLOT DATE: 12-10-13  
 PLOT TIME: 14:20:55  
 G. C. WALLACE, INC.  
 Engineers/Planners/Surveyors  
 1555 SOUTH RAINBOW BLVD., LAS VEGAS, NEVADA, 89146  
 TELEPHONE: (702) 804-2000 • FAX: (702) 804-2299  
 E: gwallace@wallaceinc.com