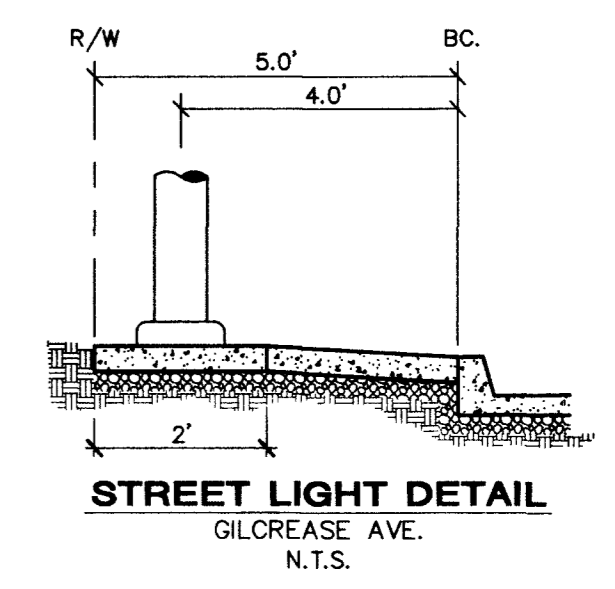
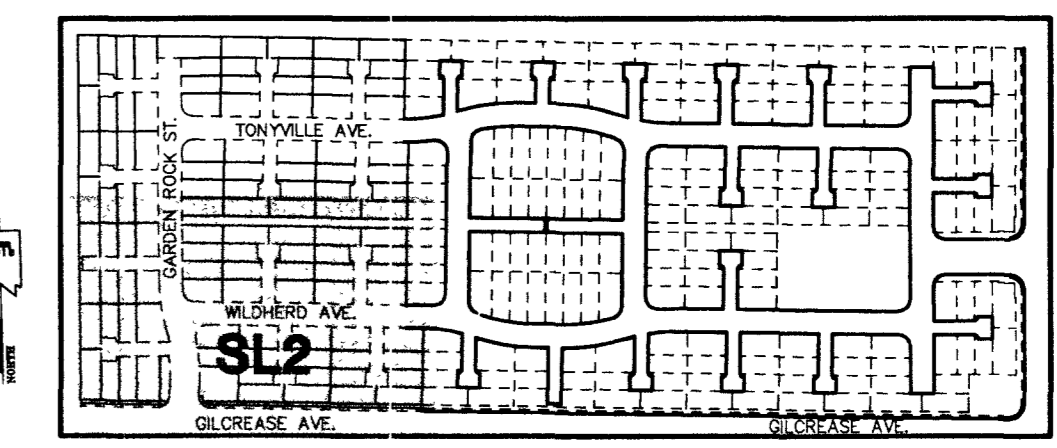
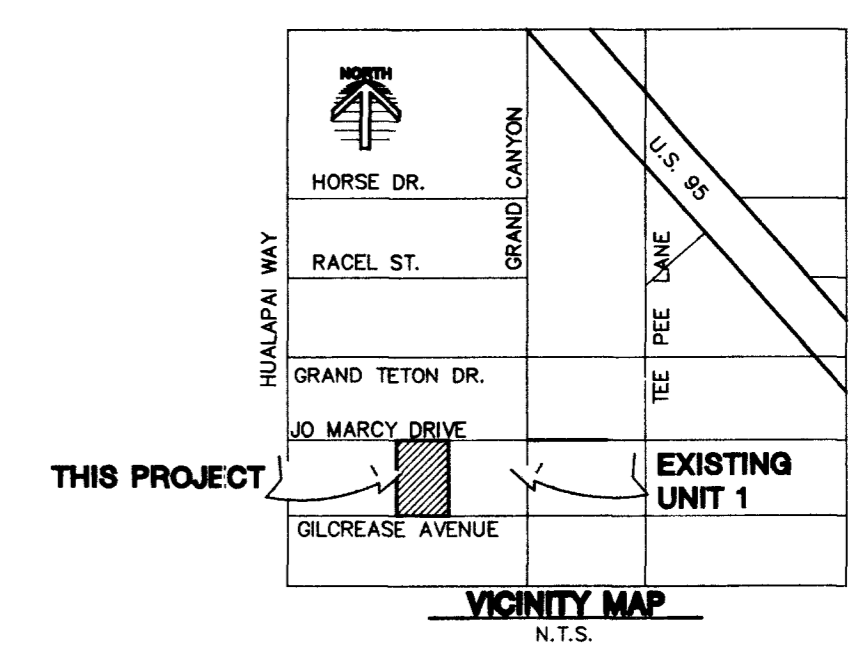
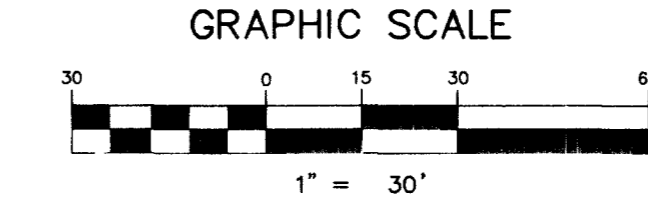


Avoid overhead power lines
Call before you dig
1-702-593-6111

Avoid cutting underground utility lines
Call before you dig
1-800-227-2600

TRAFFIC DELINEATION AND SIGNAGE PLAN

- (A) INSTALL (2) D3 "STREET NAME" SIGNS-PRIVATE STREET STANDARDS (WHITE LETTERS ON BROWN BACKGROUND)
- (B) INSTALL 30" RI-1 "STOP" SIGN AND (2) 9" D3 "STREET NAME" SIGNS
- (C) INSTALL OM4-1 "END OF ROAD MARKER" SIGN



NOTE

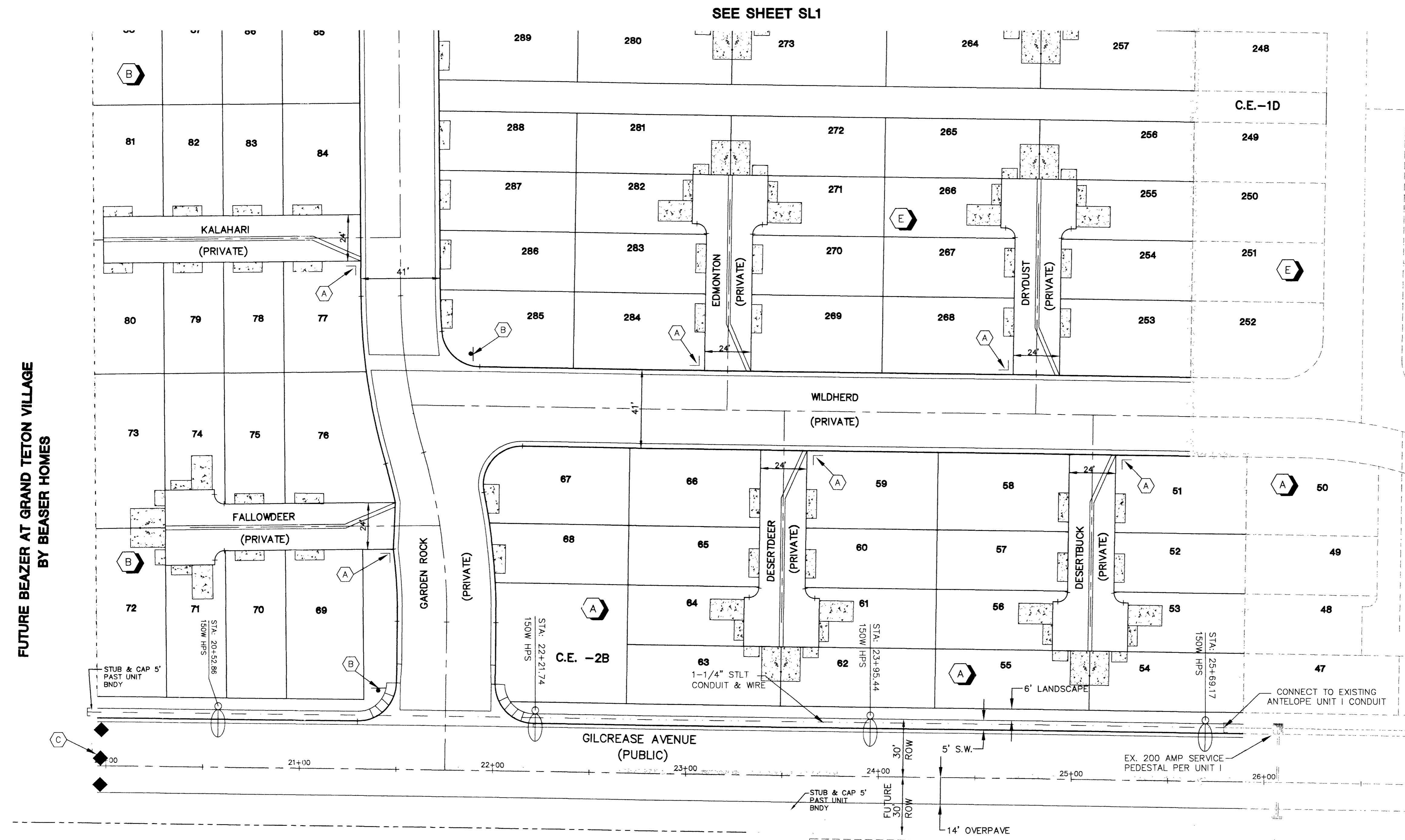
1. ALL STREET LIGHTING INSTALLATION EXCEPT AS NOTED ON THE STREET LIGHTING PLANS SHALL CONFORM TO THE IMPROVEMENT STANDARDS, DEPARTMENT OF PUBLIC WORKS, CLARK COUNTY, NEVADA, AND THE UNIFORM STANDARDS SPECIFICATIONS FOR PUBLIC WORKS CONSTRUCTION, OFF-SITE IMPROVEMENTS, CLARK COUNTY AREA, NEVADA.
2. ALL POLES TO BE GALVANIZED.
3. ALL HAND HOLE COVERS MUST BE INSTALLED, POLE CAPS POURED, AND PULL BOX LIDS BOLTED DOWN PRIOR TO ENERGIZING CIRCUIT. ALL WIRE MUST HAVE THW INSULATION.

NOTE

CONTRACTOR SHALL VERIFY HORIZONTAL AND VERTICAL LOCATION OF EXISTING UTILITIES AND NOTIFY THE DESIGN ENGINEER IMMEDIATELY OF ANY DISCREPANCIES PRIOR TO CONSTRUCTION.

LEGEND/ESTIMATE OF QUANTITIES

- 150 WATT HPS LUMINAIRE 4 EA
- 1 1/4" PVC CONDUIT 584 LF



FUTURE VALLEY CREST AT TETON VILLAGE
BY LM LAS VEGAS
APN: 125-18-201-002

GREYSTONE HOMES	CITY OF LAS VEGAS, NEVADA	TRAFFIC & STREETLIGHT PLAN	ANTELOPE UNIT 2	REVISION
3765 E. SUNSET #1 LAS VEGAS, NEVADA 89120 (702) 498-7700	2727 SOUTH RAINBOW BOULEVARD LAS VEGAS, NEVADA 89146-5148 PH. (702) 873-7550 FAX (702) 362-2597	PLANNERS • AND SURVEYORS		
		DRAWN BY: AUG. 2003	DESIGNED BY: AUG. 2003	CHECKED BY: AUG. 2003
		PROJECT NO: 6368-2	SCALE: 1"=30' HORIZ. N/A VERT.	EXPIRES 06-30-05
		SHEET SL2 25 OF 25 SHEETS DRAWING NO. 1674781-2		

64084