

PROJECT BENCHMARK

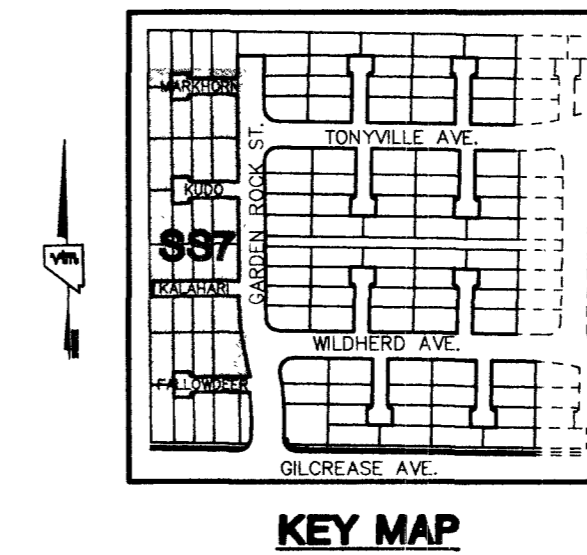
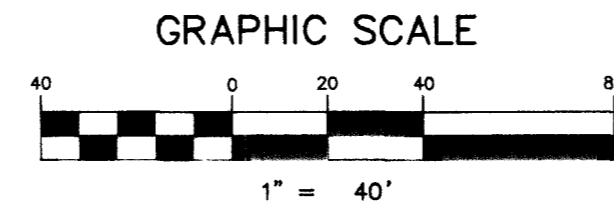
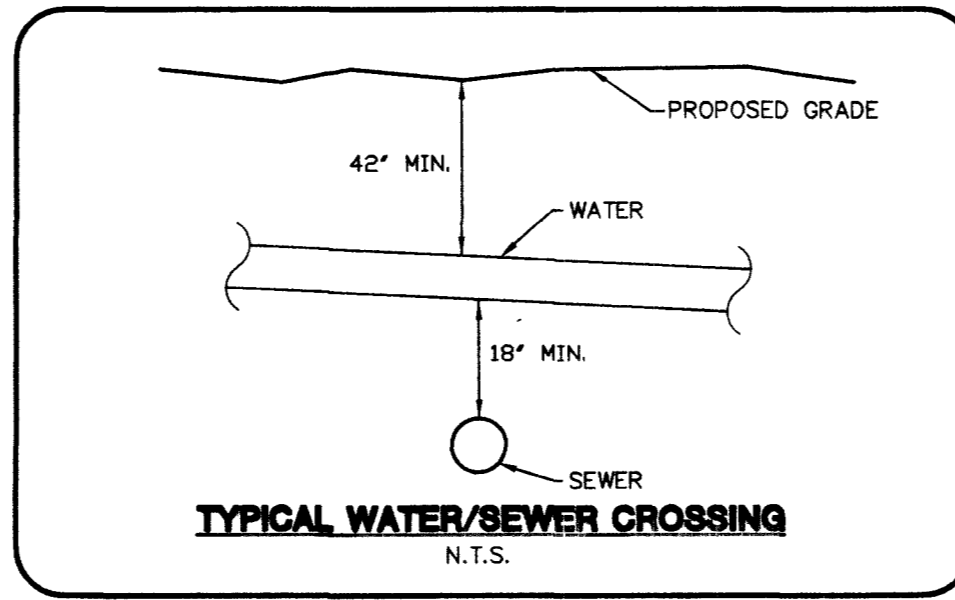
PROJECT DATUM: NORTH AMERICAN VERTICAL DATUM OF 1988 (NAVD88)
 CITY OF LAS VEGAS BENCHMARK: 0C9017N6
 ELEVATION: 799.0857 METERS (2,621.67 FEET)
 RIVET AND SQUARE ALUMINUM PLATE IN TOP CENTER OF HEADWALL ON THE WEST SIDE OF U.S. 95 NEAR MILE MARKER 90.15.

BASIS OF BEARING

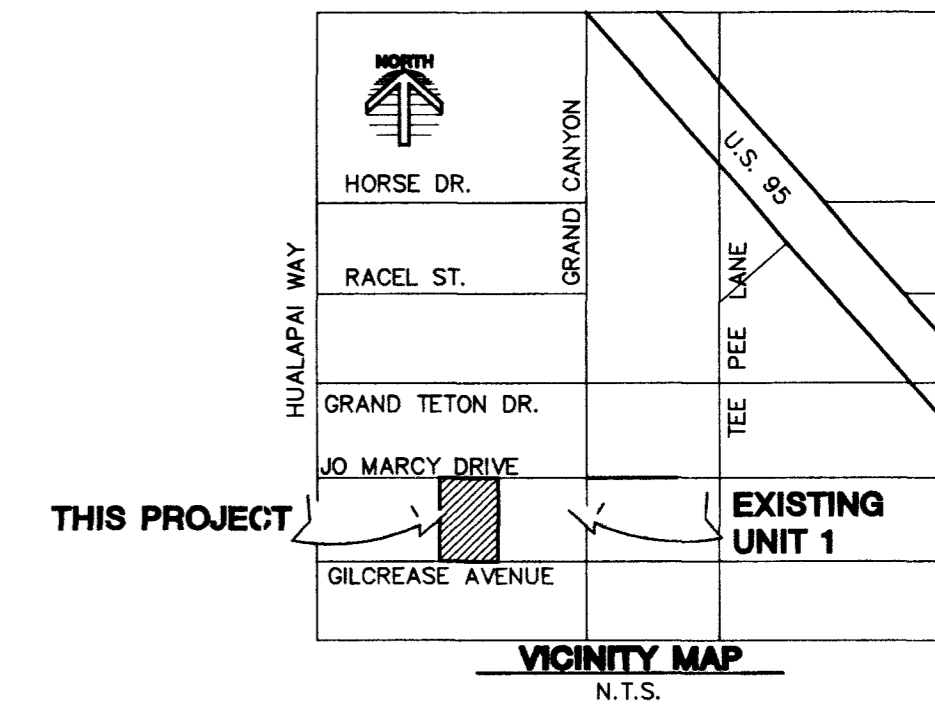
SOUTH 89°10'24" EAST - BEING THE SOUTH LINE OF THE NORTHWEST QUARTER (NW 1/4) OF THE NORTHEAST QUARTER (NE 1/4) OF SECTION 18, TOWNSHIP 19 SOUTH, RANGE 60 EAST, M.D.M., CLARK COUNTY, NEVADA AS SHOWN BY THAT RECORD OF SURVEY ON FILE IN THE OFFICE OF THE COUNTY RECORDER, CLARK COUNTY, NEVADA, IN FILE 114 OF SURVEYS, AT PAGE 57.

NOTE:

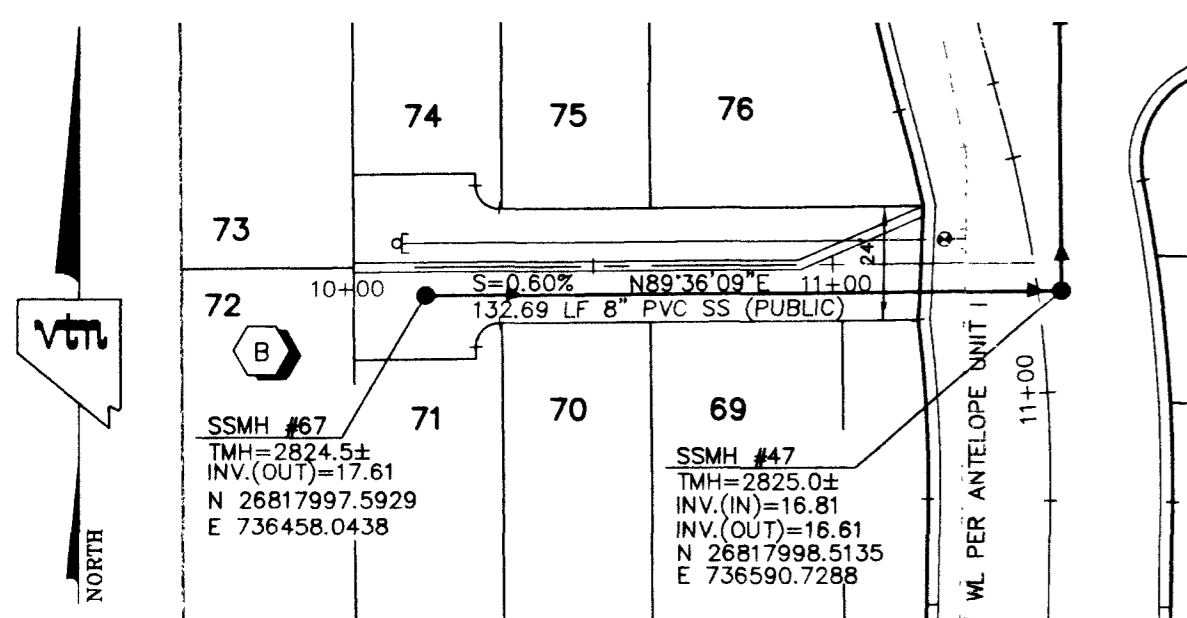
ALL STREETS ARE PRIVATE UNLESS OTHERWISE NOTED.
 ALL PRIVATE STREETS AND DRIVES ARE P.U.E., PUBLIC SEWER EASEMENTS, AND PUBLIC DRAINAGE EASEMENTS TO BE PRIVATELY MAINTAINED BY HOA.



KEY MAP

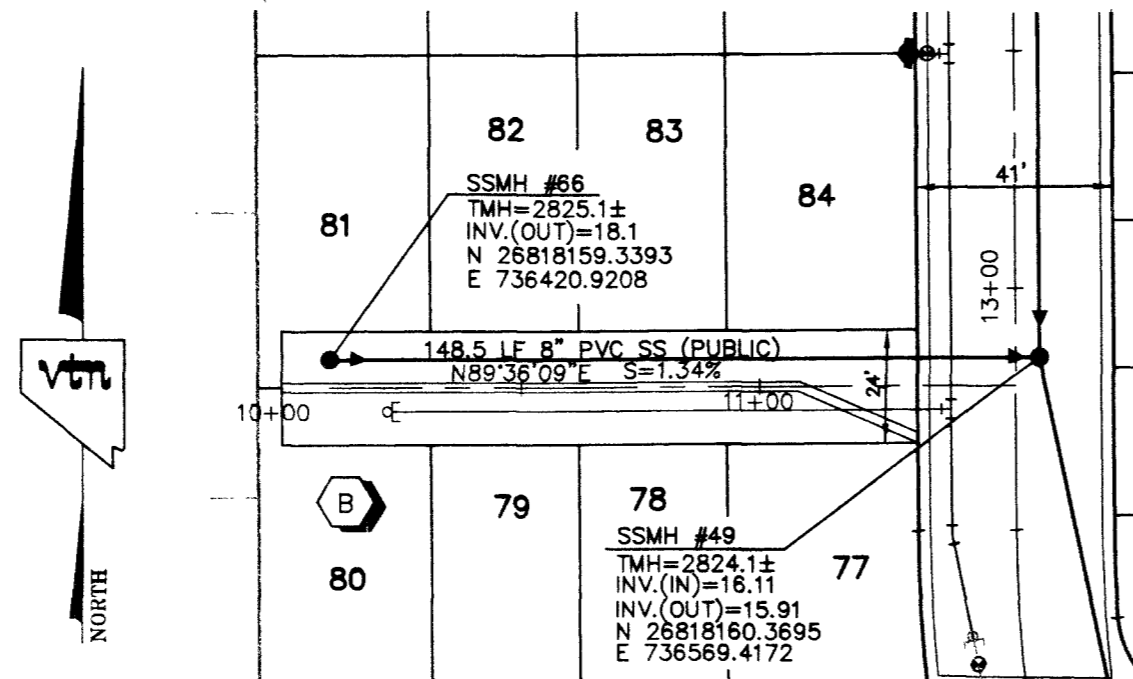


SEE SHEET SS4 FOR PROFILE GARDEN ROCK AVE



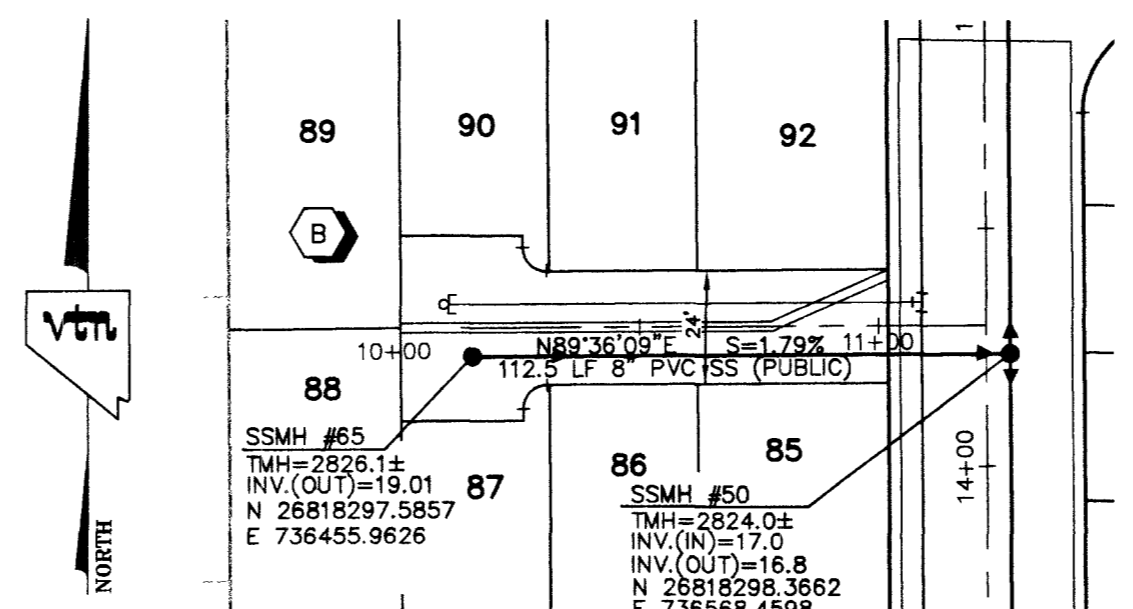
FALLOWDEER ST. (PRIVATE STREET) PLAN HORIZONTAL 1"=40'

SEE SHEET SS4 FOR PROFILE GARDEN ROCK AVE

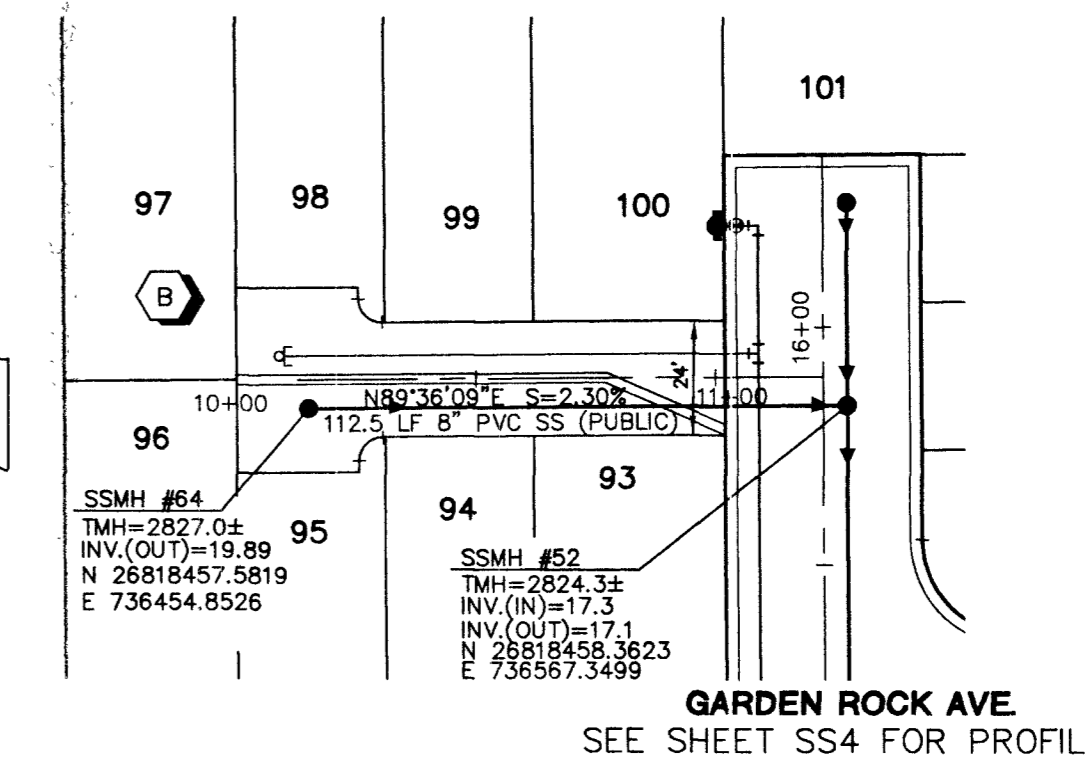


KALAHARI ST. (PRIVATE STREET) PLAN HORIZONTAL 1"=40'

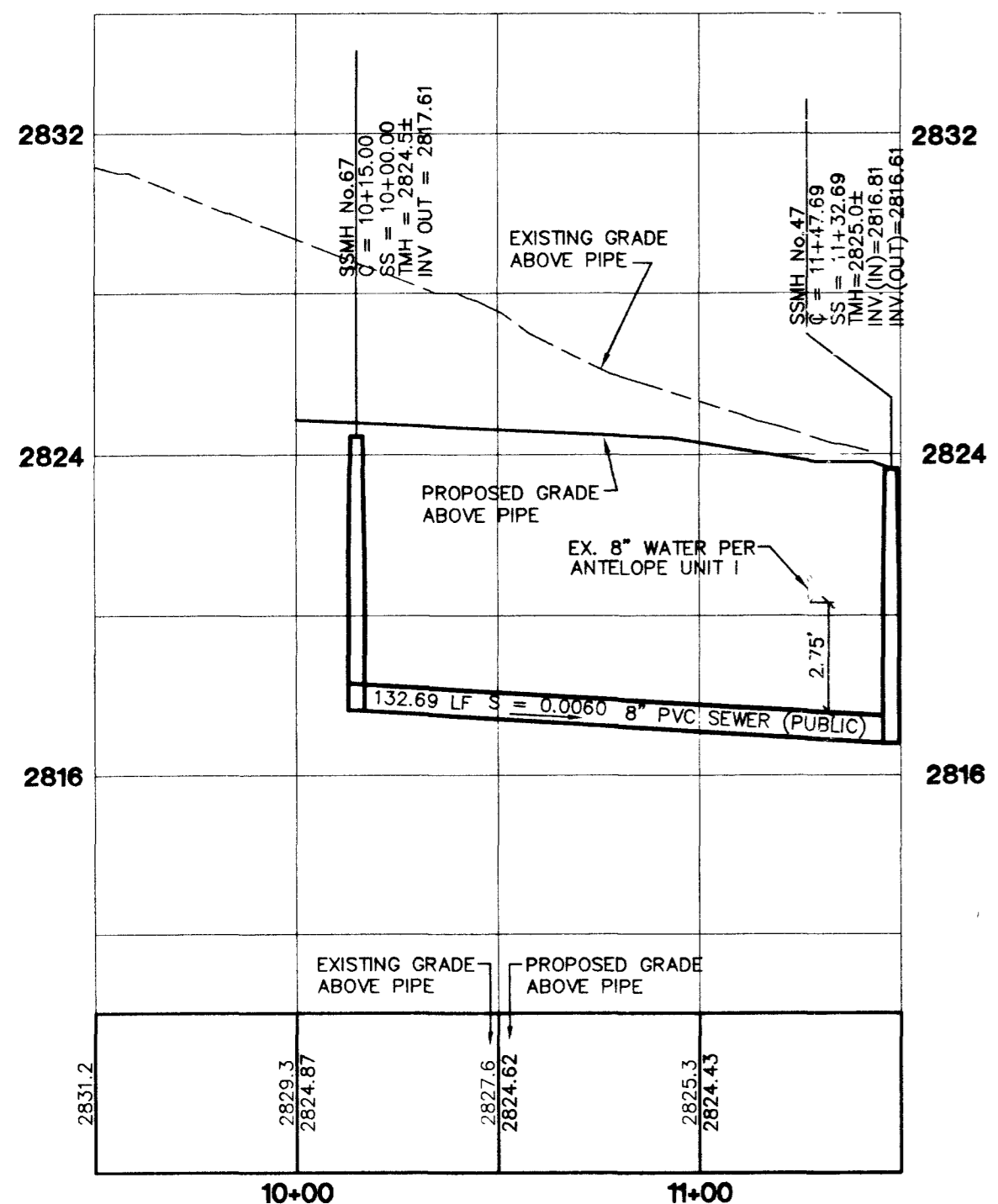
SEE SHEET SS4 FOR PROFILE GARDEN ROCK AVE



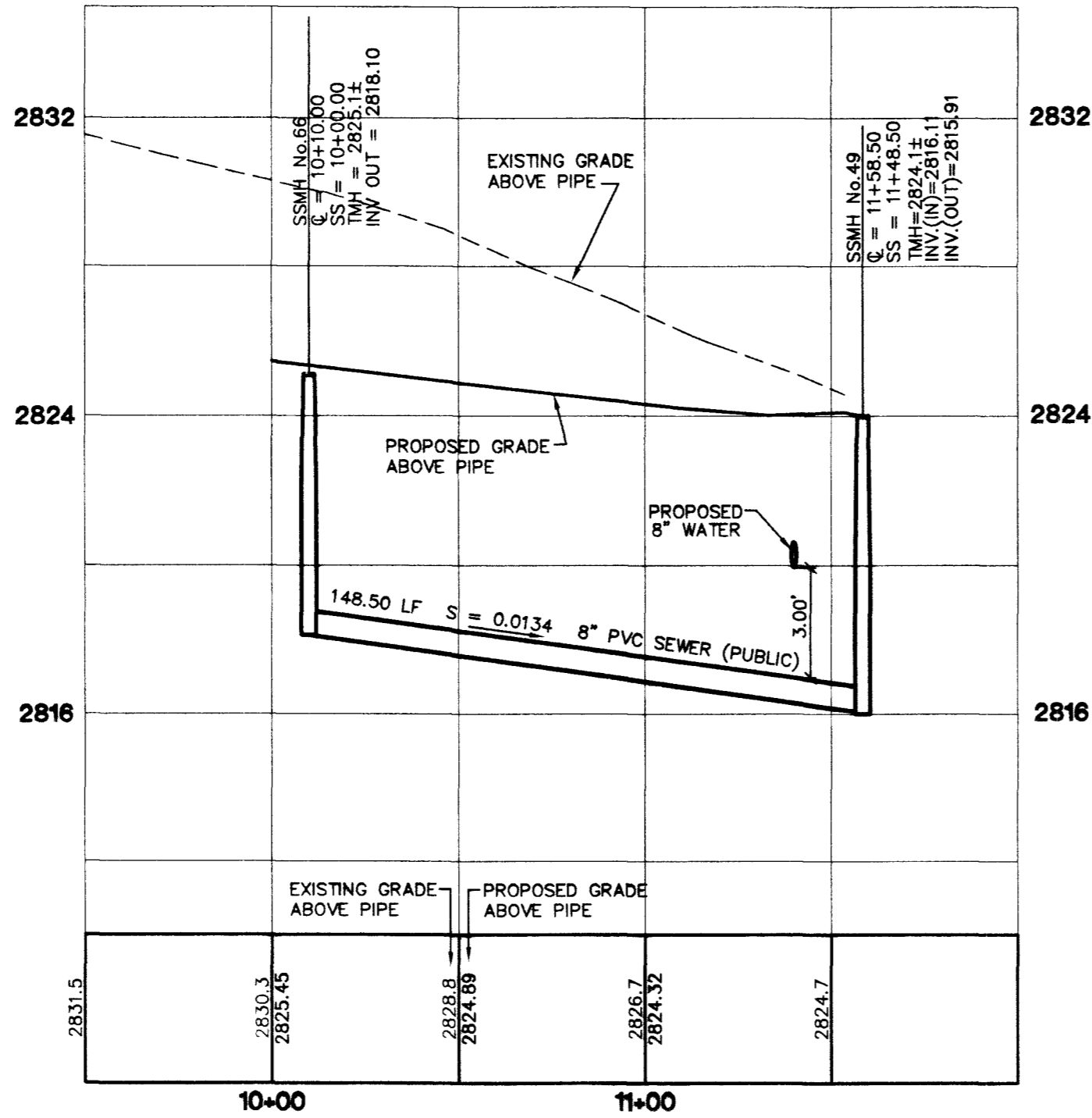
KUDO ST. (PRIVATE STREET) PLAN HORIZONTAL 1"=40'



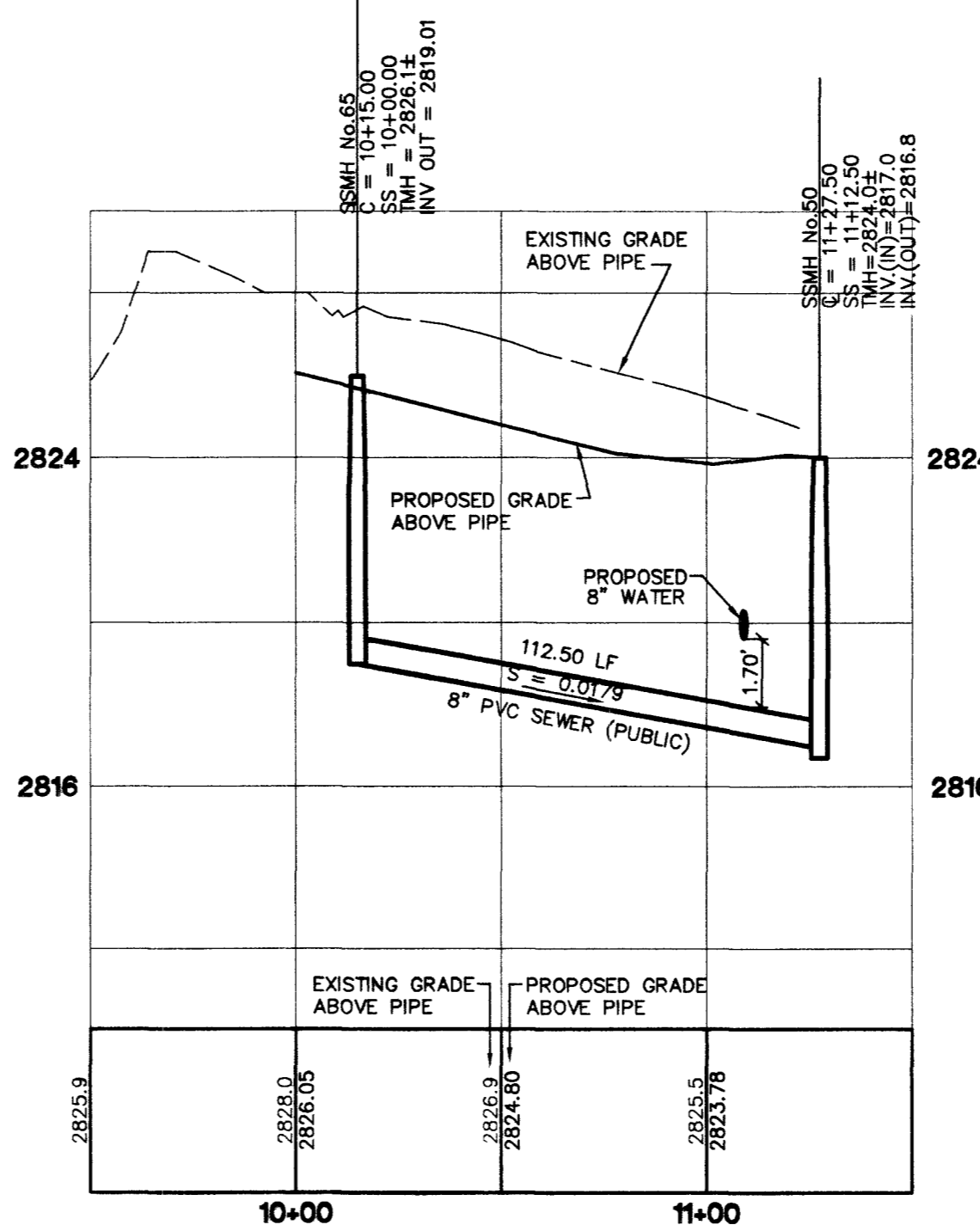
MARKHORN ST. (PRIVATE STREET) PLAN HORIZONTAL 1"=40'



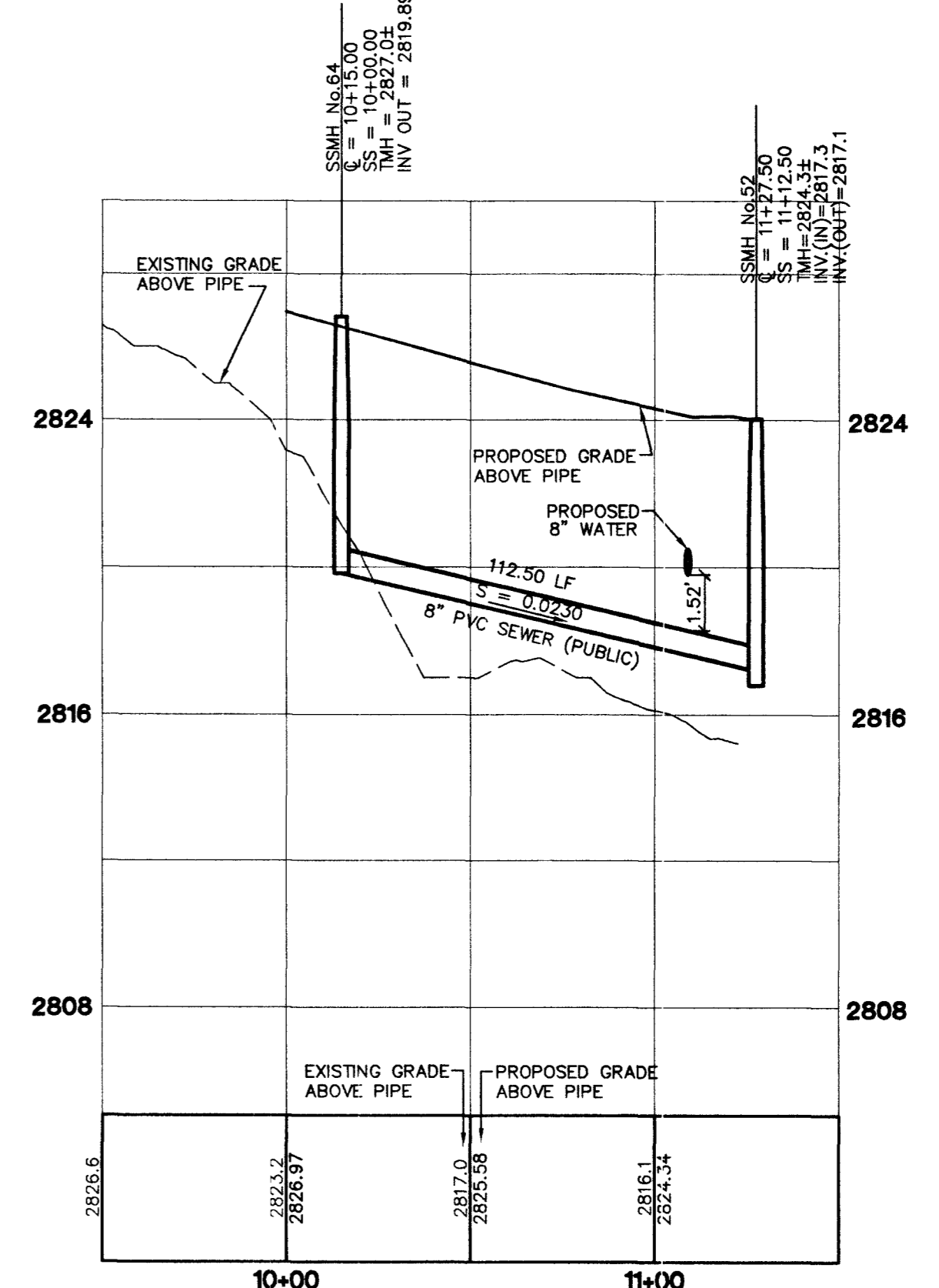
PROFILE HORIZONTAL 1"=40' VERTICAL 1"=4'



PROFILE HORIZONTAL 1"=40' VERTICAL 1"=4'



PROFILE HORIZONTAL 1"=40' VERTICAL 1"=4'



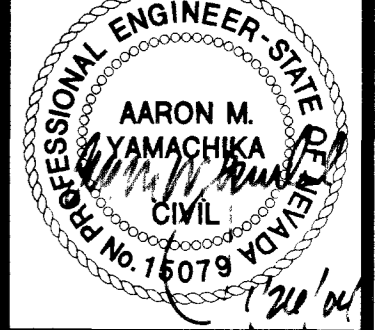
PROFILE HORIZONTAL 1"=40' VERTICAL 1"=4'

GREYSTONE HOMES
 CITY OF LAS VEGAS, NEVADA
 3765 E. SUNSET #B1
 LAS VEGAS, NEVADA 89120
 (702) 458-7700

SEWER PLAN & PROFILE
 FALLOWDEER ST. - KALAHARI ST.
 KUDO ST. - MARKHORN ST.

DRAWN BY: KCH
 DESIGNED BY: KCH
 CHECKED BY: EST
 PROJECT NO: 9.886-2

EXPIRES 06-30-04



SHEET SS7
 23 OF 25 SHEETS
 DRAWING NO. 1074781-2

Call before you Dig
 1-800-227-2600

Call before you Overhead
 1-702-593-6111

64082

16.886-2\DWG\UNIT16.886-2-25S