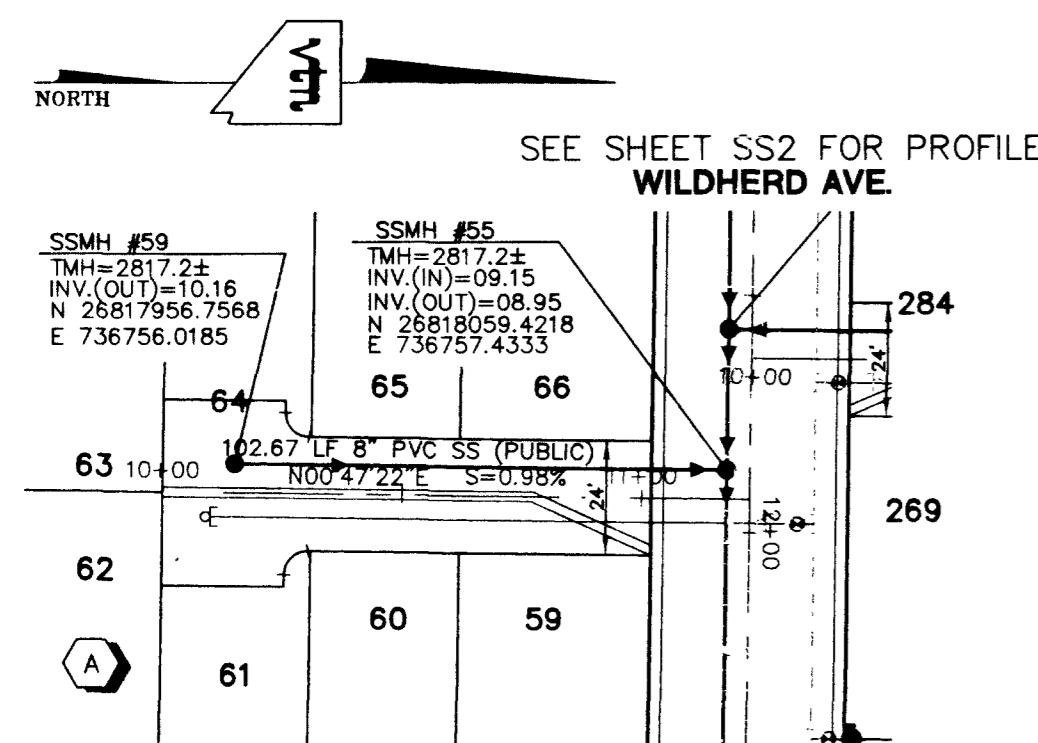
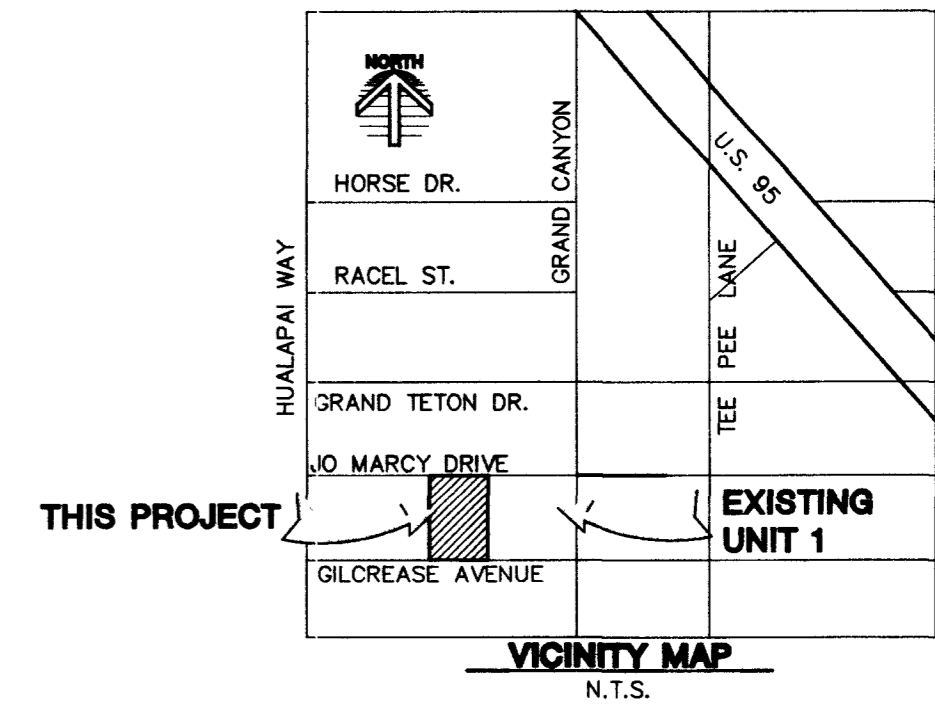
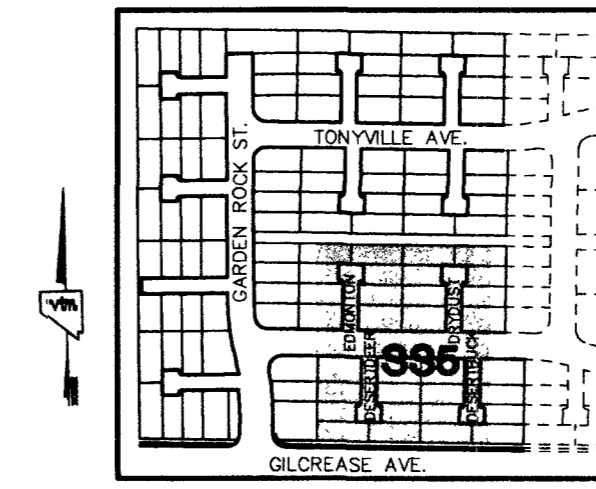
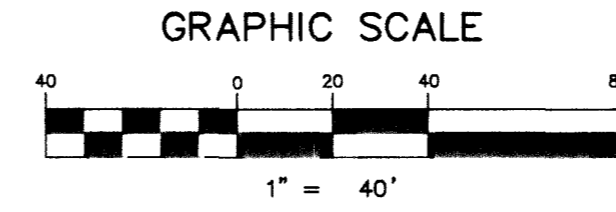
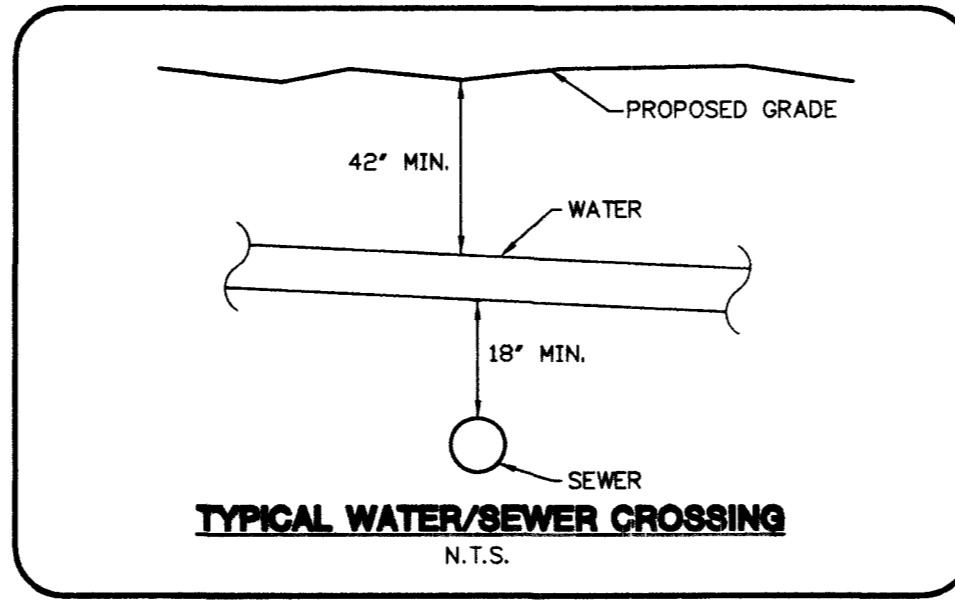


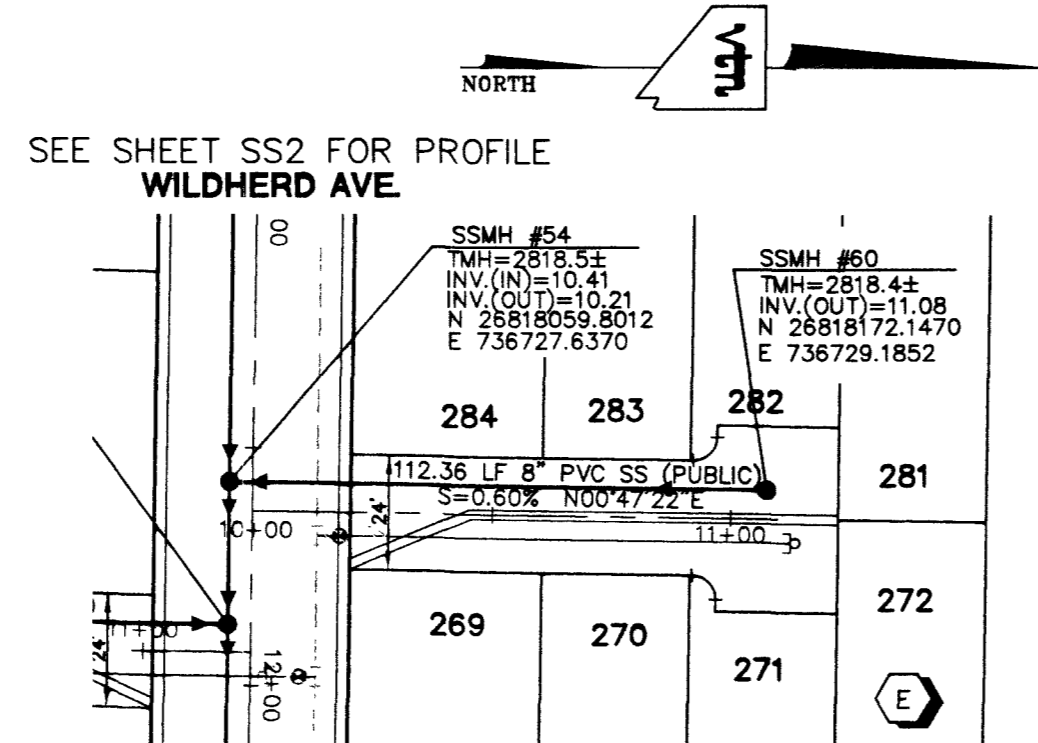
**PROJECT BENCHMARK**  
 PROJECT DATUM: NORTH AMERICAN VERTICAL DATUM OF 1988 (NAVD88)  
 CITY OF LAS VEGAS BENCHMARK: 009017N6  
 ELEVATION: 799.0857 METERS (2,621.67 FEET)  
 RIVET AND SQUARE ALUMINUM PLATE IN TOP CENTER OF HEADWALL ON THE WEST SIDE OF U.S. 95 NEAR MILE MARKER 90.15.

**BASIS OF BEARING:**  
 SOUTH 89°10'24" EAST - BEING THE SOUTH LINE OF THE NORTHWEST QUARTER (NW 1/4) OF THE NORTHEAST QUARTER (NE 1/4) OF SECTION 18, TOWNSHIP 19 SOUTH, RANGE 60 EAST, M.D.M., CLARK COUNTY, NEVADA AS SHOWN BY THAT RECORD OF SURVEY ON FILE IN THE OFFICE OF THE COUNTY RECORDER, CLARK COUNTY, NEVADA, IN FILE 114 OF SURVEYS, AT PAGE 57.

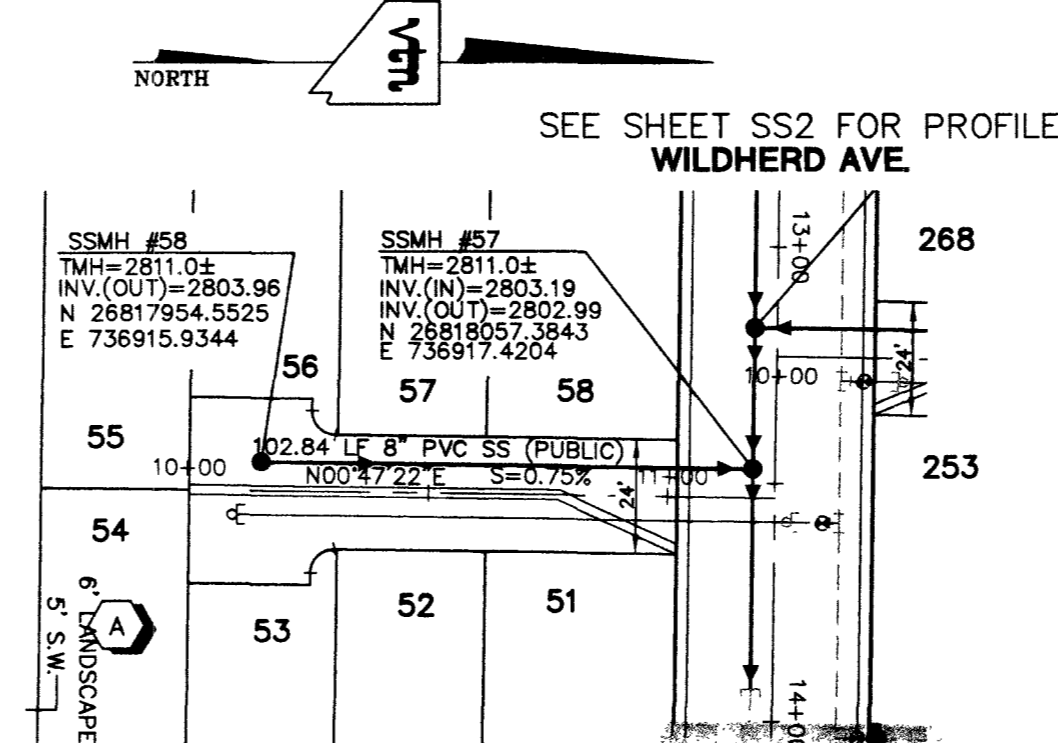
**NOTE:**  
 ALL STREETS ARE PRIVATE UNLESS OTHERWISE NOTED.  
 ALL PRIVATE STREETS AND DRIVES ARE P.U.E., PUBLIC SEWER EASEMENTS, AND PUBLIC DRAINAGE EASEMENTS TO BE PRIVATELY MAINTAINED BY HOA.



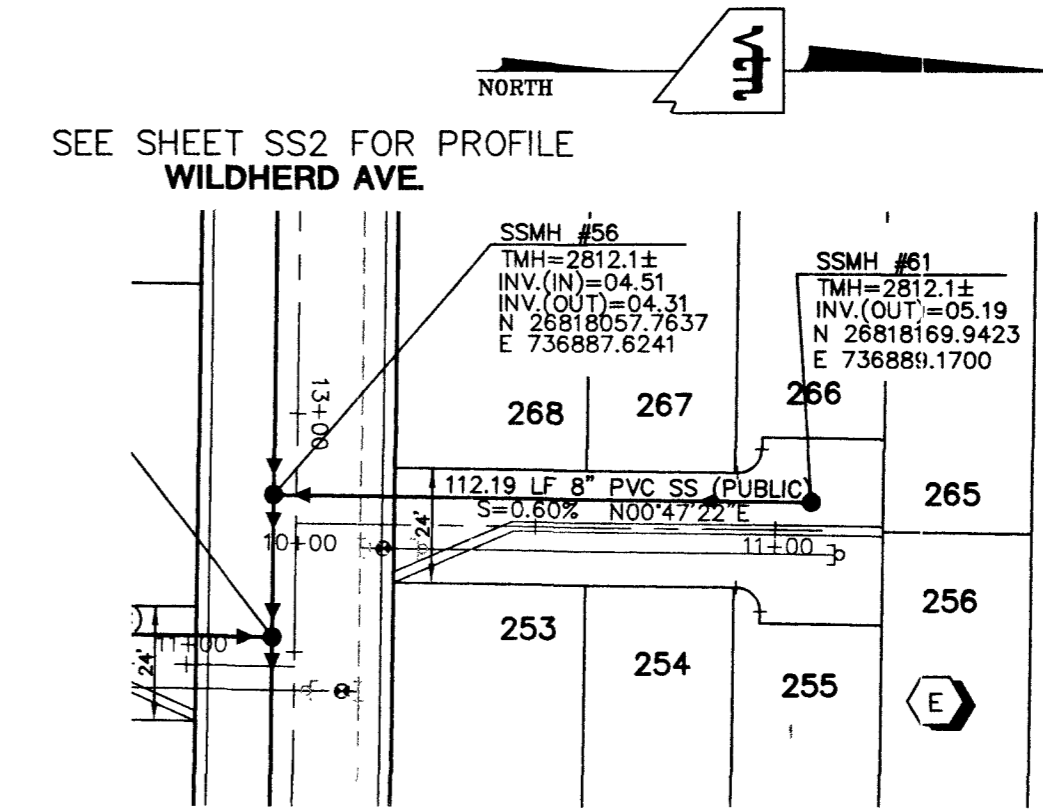
**DESERTDEER ST.**  
 (PRIVATE STREET)  
**PLAN**  
 HORIZONTAL 1"=40'



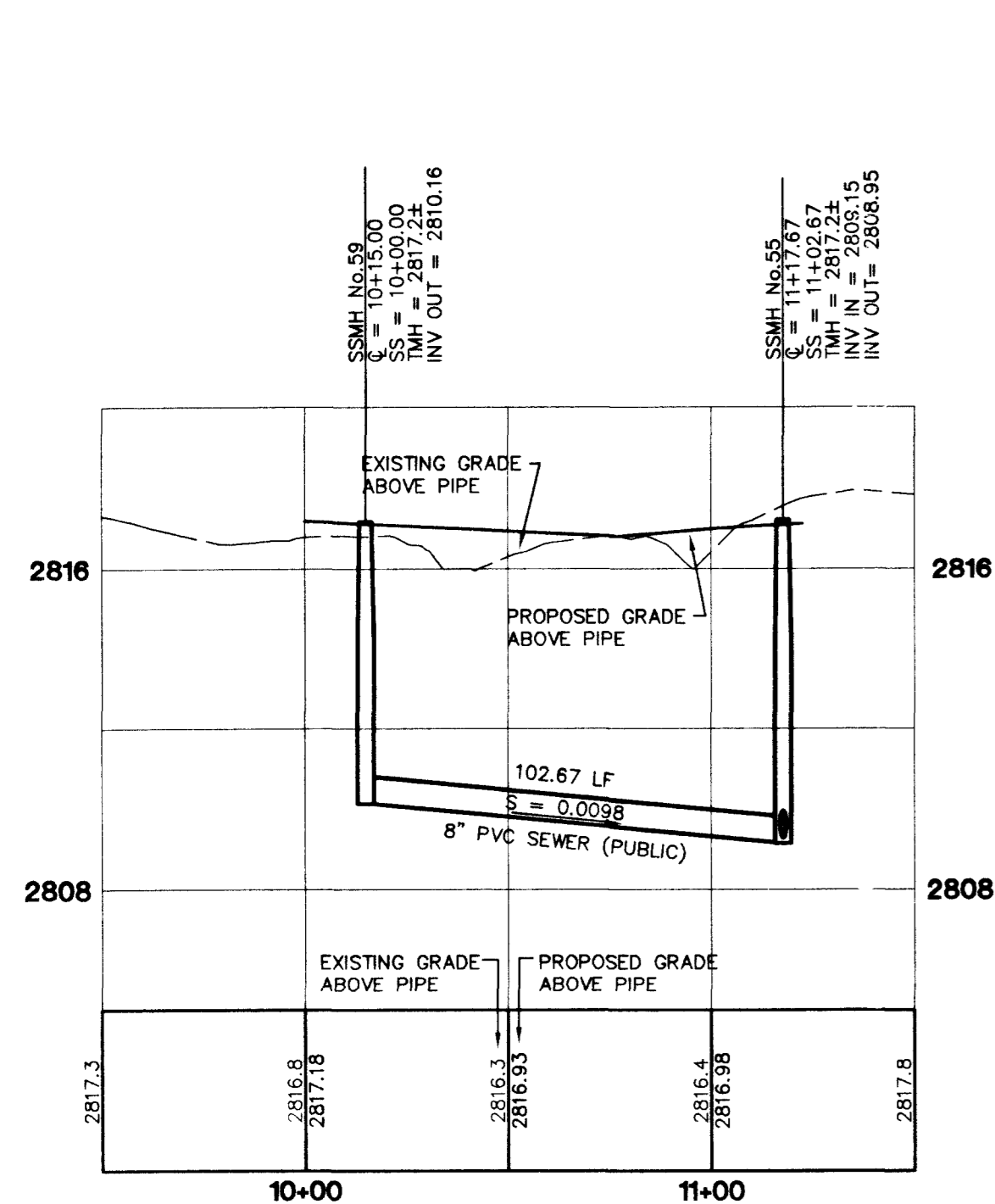
**EDMONTON ST.**  
 (PRIVATE STREET)  
**PLAN**  
 HORIZONTAL 1"=40'



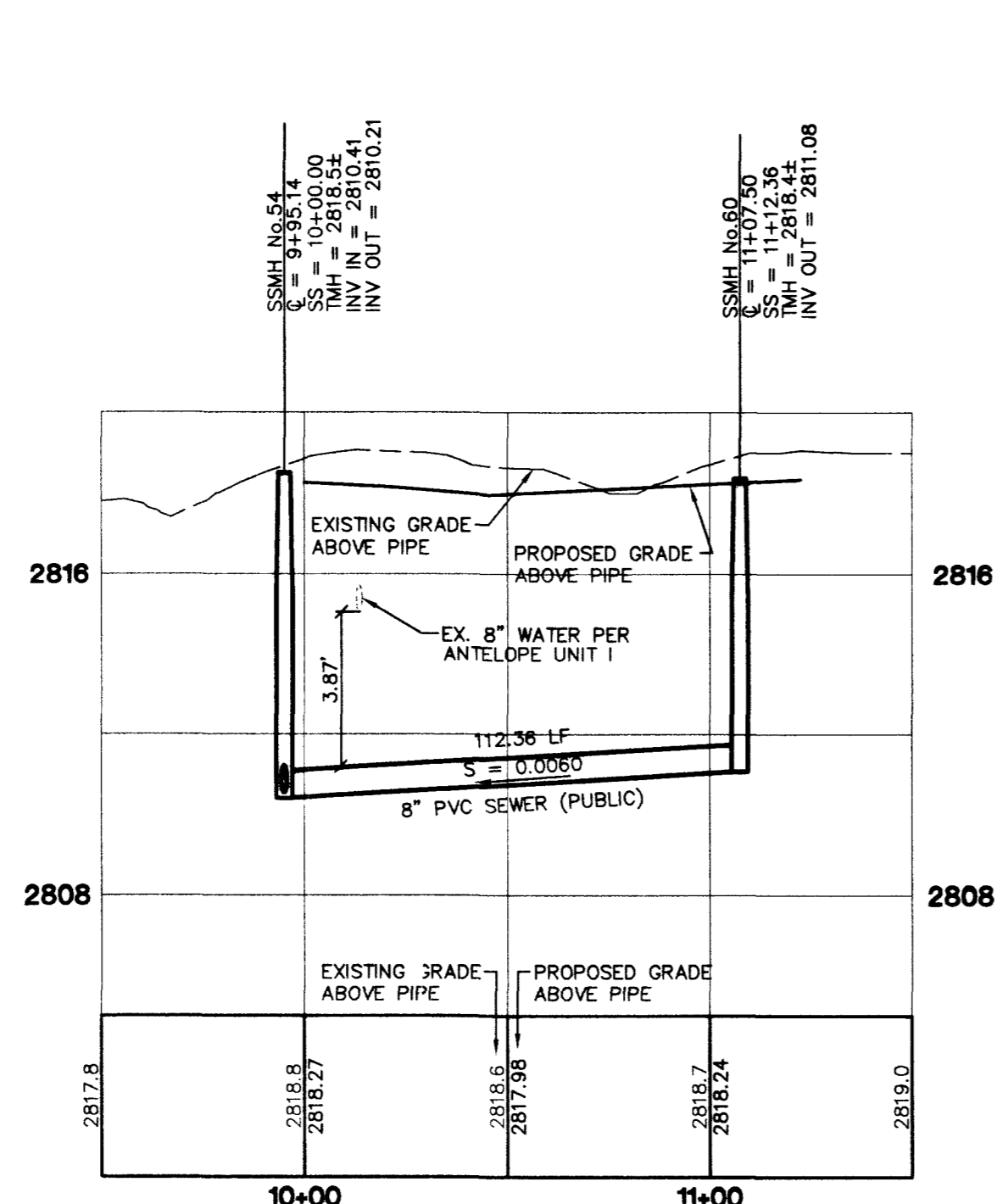
**DESERTBUCK ST.**  
 (PRIVATE STREET)  
**PLAN**  
 HORIZONTAL 1"=40'



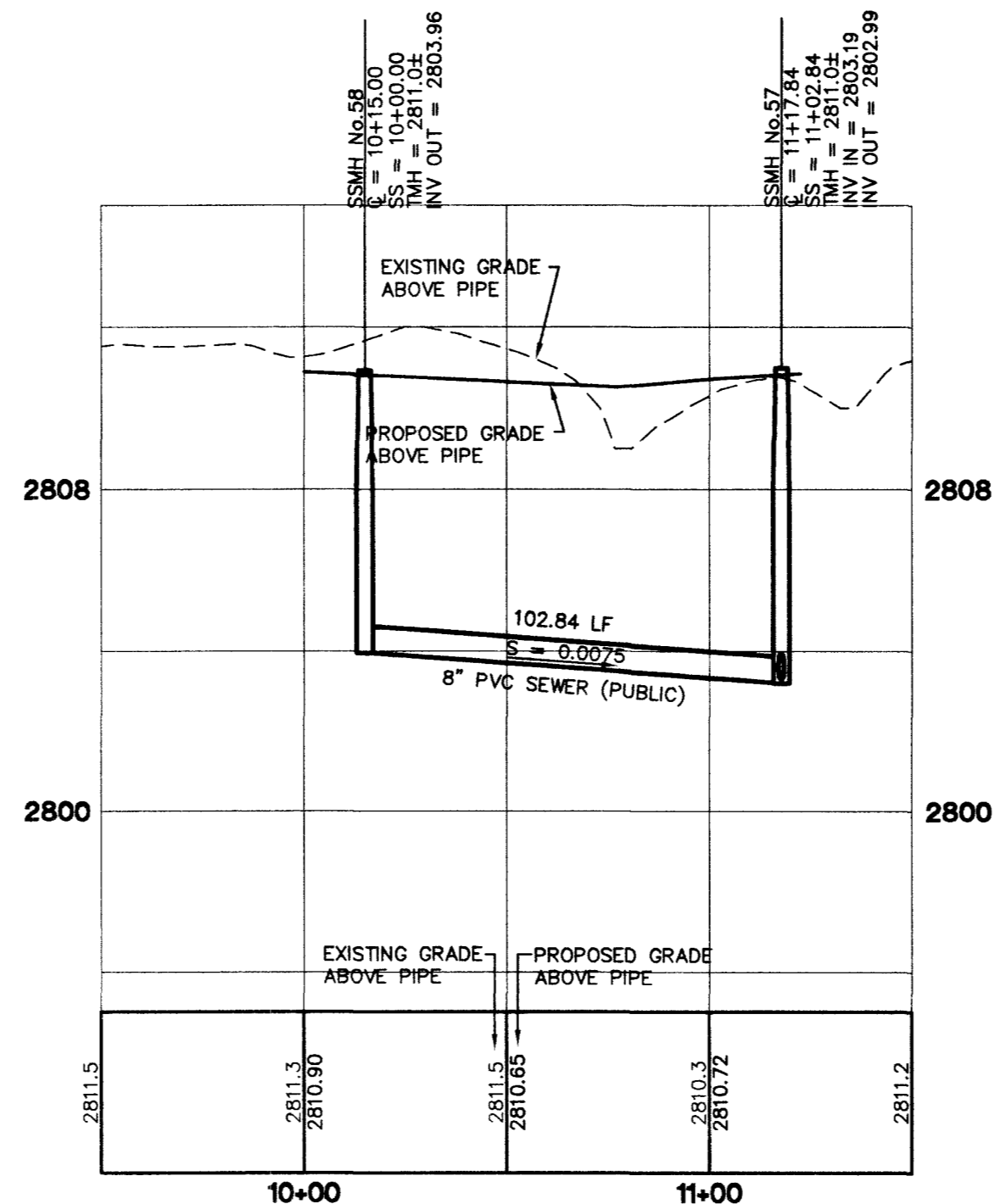
**DRYDUST ST.**  
 (PRIVATE STREET)  
**PLAN**  
 HORIZONTAL 1"=40'



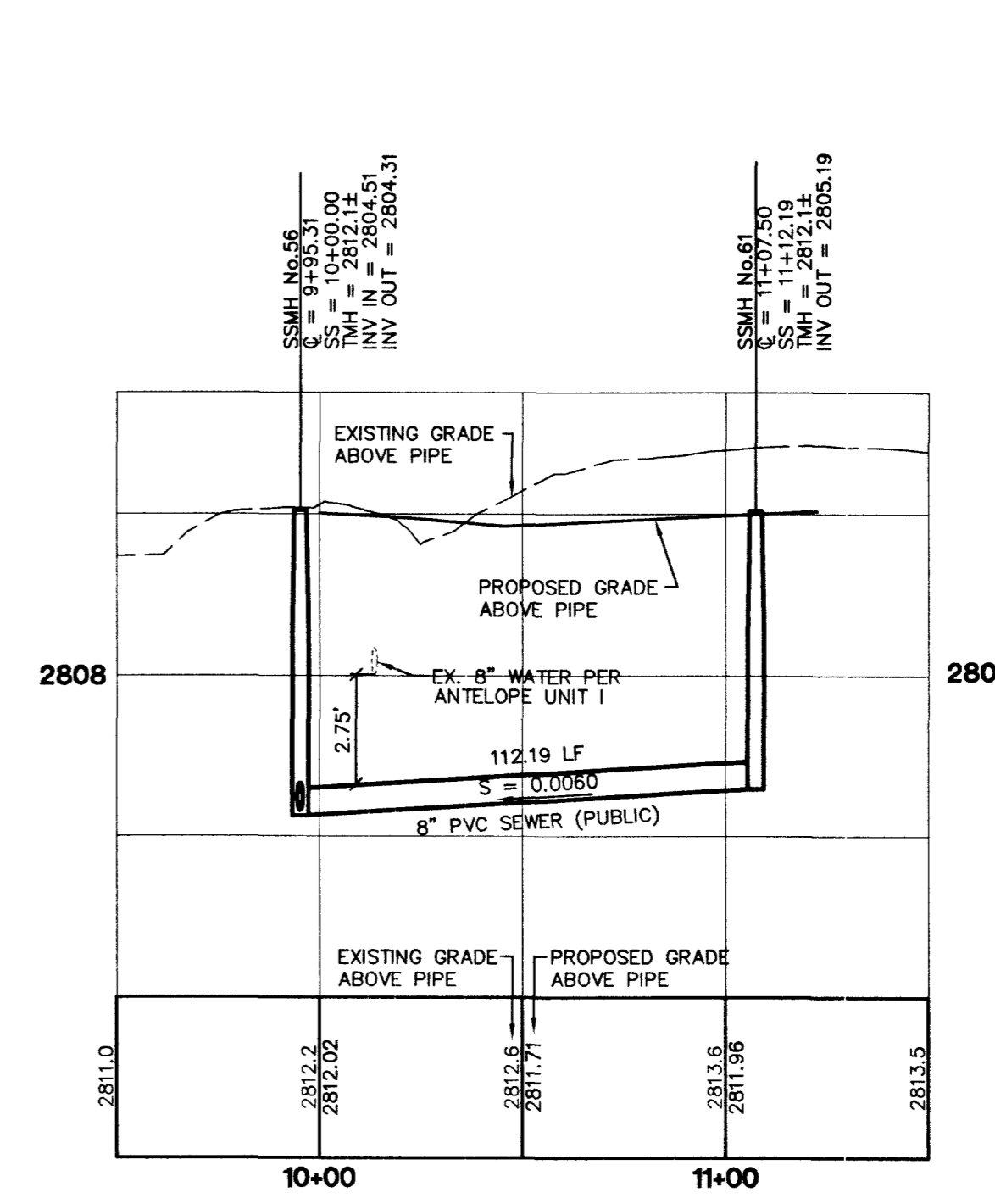
**PROFILE**  
 HORIZONTAL 1"=40'  
 VERTICAL 1"=4'



**PROFILE**  
 HORIZONTAL 1"=40'  
 VERTICAL 1"=4'



**PROFILE**  
 HORIZONTAL 1"=40'  
 VERTICAL 1"=4'



**PROFILE**  
 HORIZONTAL 1"=40'  
 VERTICAL 1"=4'

**GREYSTONE HOMES**  
 CITY OF LAS VEGAS, NEVADA  
 3765 E. SUNSET #1  
 LAS VEGAS, NEVADA 89120  
 (702) 498-7700  
 2727 SOUTH RAINBOW BOULEVARD LAS VEGAS, NEVADA 89146-5148  
 PH. (702) 873-7550 FAX (702) 362-2597  
 nvada CONSULTING ENGINEERS • PLANNERS • LAND SURVEYORS

**SEWER PLAN & PROFILE**  
 DESERTDEER ST. - EDMONTON ST.  
 DESERTBUCK ST. - DRYDUST ST.  
 ANTELOPE UNIT 2

DRAWN BY: KCH  
 DESIGNED BY: KCH  
 CHECKED BY: EST  
 AUG. 2003  
 AUG. 2003  
 AUG. 2003  
 PROJECT NO: 6368-2  
 SCALE: 1"=40' HORIZ. 1"=4' VERT.

EXPIRES 06-30-04  
 PROFESSIONAL ENGINEER STATE OF NEVADA  
 AARON M. AMACHIKA  
 CIVIL ENGINEER  
 No. 15079  
 SHEET  
 SS5  
 21 OF 25 SHEETS  
 DRAWING NO.  
 1074781-2

Avoid cutting underground utility lines. It's costly.  
 Avoid overhead power line contact.  
**Call before you Dig**  
**Call before you OVERHEAD**  
 1-800-227-2600 1-702-593-6111

64080