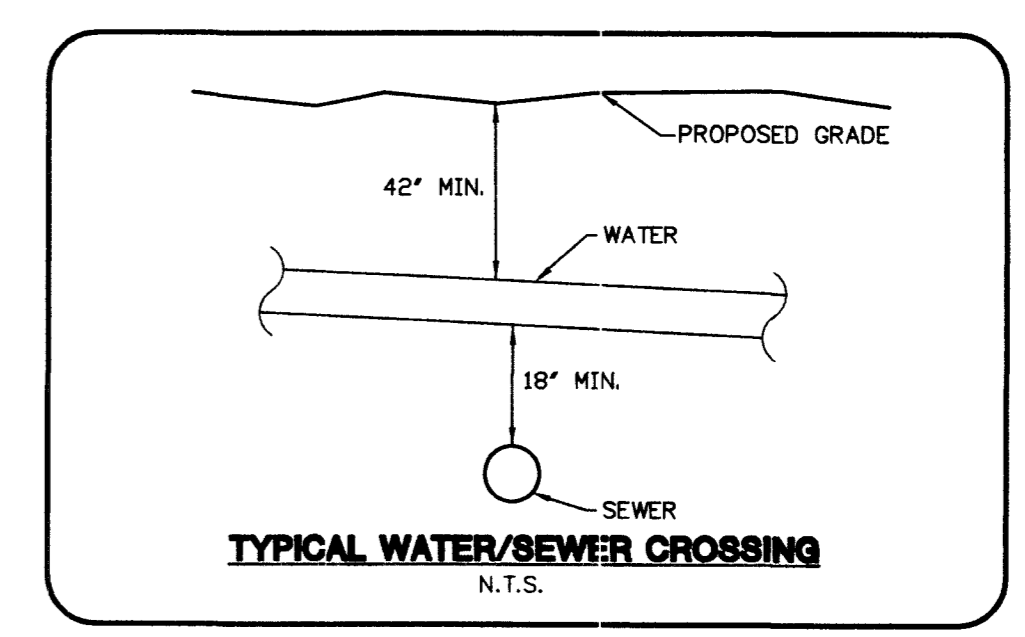
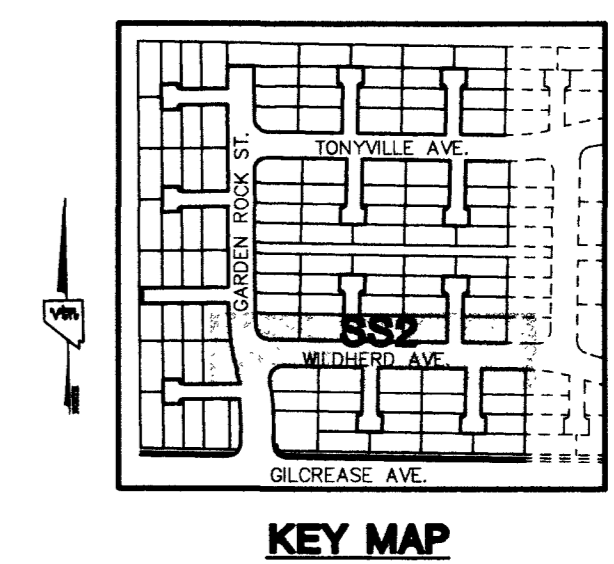
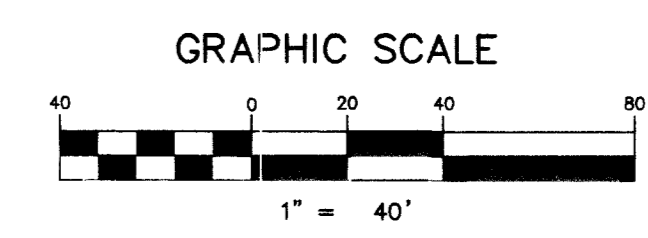
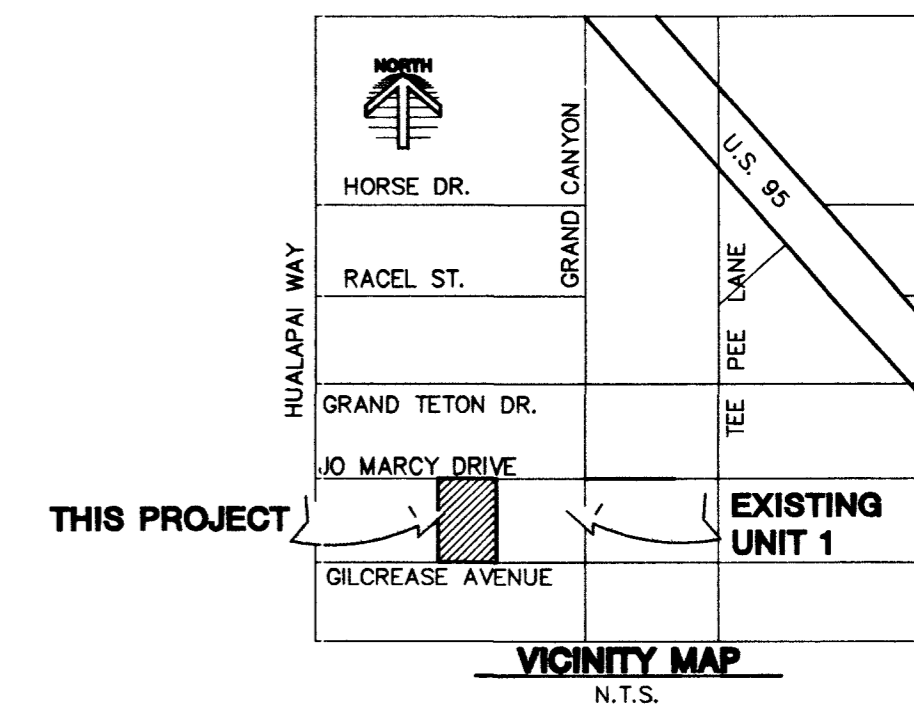
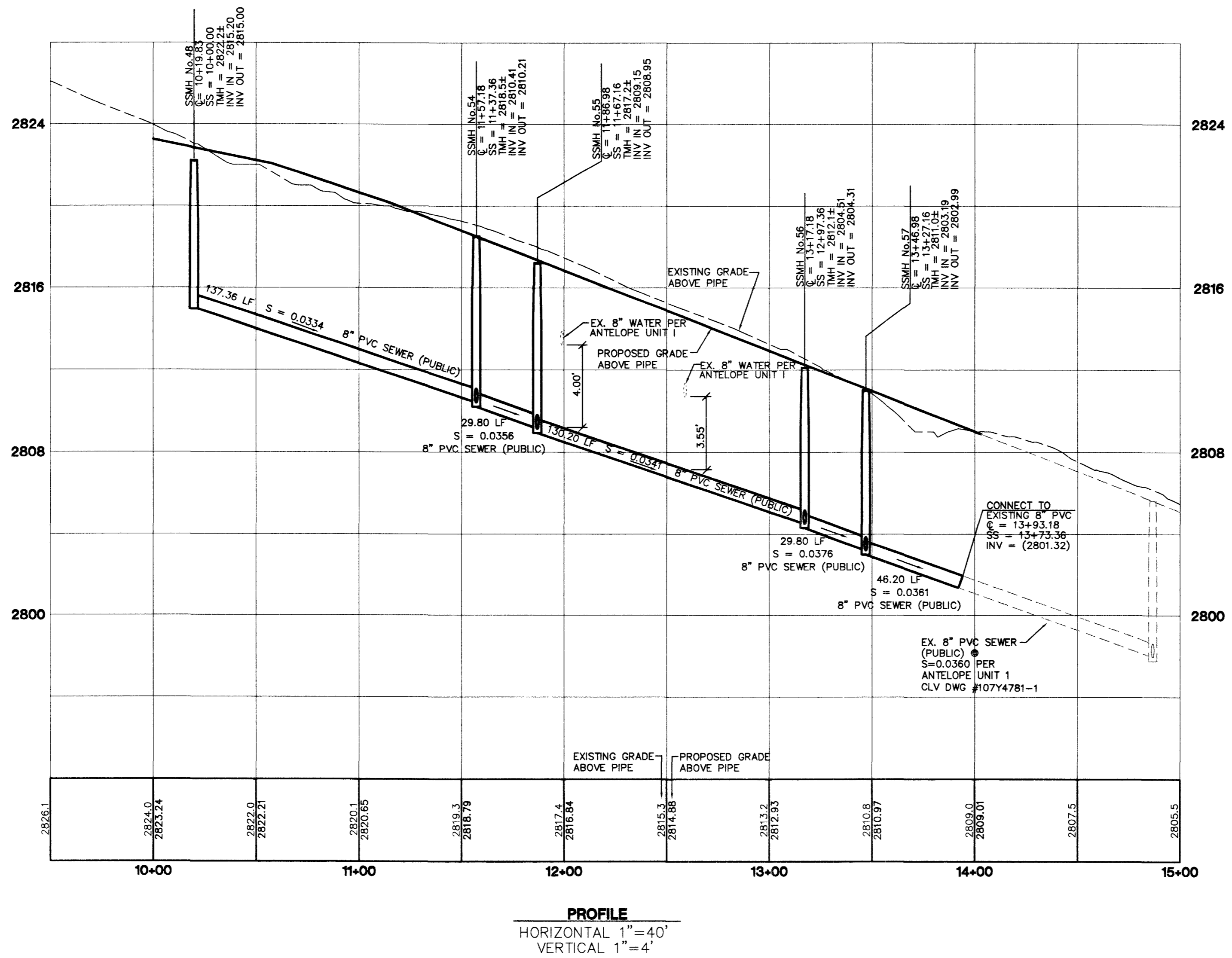
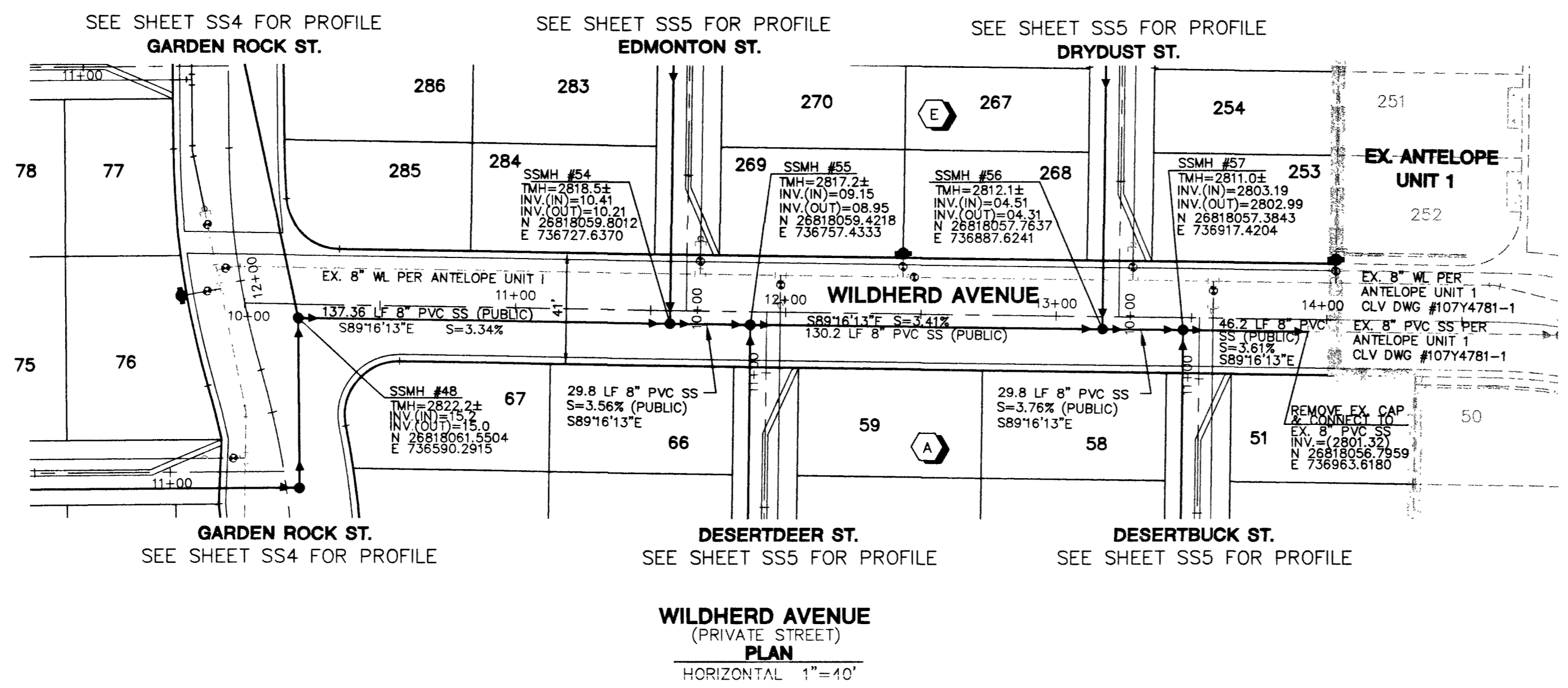


PROJECT BENCHMARK
 PROJECT DATUM: NORTH AMERICAN VERTICAL DATUM OF 1988 (NAVD88)
 CITY OF LAS VEGAS BENCHMARK: 009017N6
 ELEVATION: 799.0857 METERS (2,621.67 FEET)
 RIVET AND SQUARE ALUMINUM PLATE IN TOP CENTER OF HEADWALL ON THE WEST SIDE OF U.S. 95 NEAR MILE MARKER 90.15.

BASIS OF BEARING:
 SOUTH 89°10'24" EAST = BEING THE SOUTH LINE OF THE NORTHWEST QUARTER (NW 1/4) OF THE NORTHEAST QUARTER (NE 1/4) OF SECTION 18, TOWNSHIP 19 SOUTH, RANGE 60 EAST, M.D.M. CLARK COUNTY, NEVADA AS SHOWN BY THAT RECORD OF SURVEY ON FILE IN THE OFFICE OF THE COUNTY RECORDER, CLARK COUNTY, NEVADA, IN FILE 114 OF SURVEYS, AT PAGE 57.

NOTE:
 ALL STREETS ARE PRIVATE UNLESS OTHERWISE NOTED.
 ALL PRIVATE STREETS AND DRIVES ARE P.U.E., PUBLIC SEWER EASEMENTS, AND PUBLIC DRAINAGE EASEMENTS TO BE PRIVATELY MAINTAINED BY HOA.



GREYSTONE HOMES
 CITY OF LAS VEGAS, NEVADA
 3765 E. SUNSET #81
 LAS VEGAS, NEVADA 89120
 (702) 458-7700

SEWER PLAN & PROFILE
 WILDERD AVENUE
 ANTELOPE UNIT 2

2727 SOUTH RAINBOW BOULEVARD LAS VEGAS, NEVADA 89146-5148
 PH. (702) 873-7500 FAX (702) 352-2597
 CONSULTING ENGINEERS • PLANNERS • LAND SURVEYORS

VTM nevada

DRAWN BY: KGH
 DESIGNED BY: KGH
 CHECKED BY: EST
 PROJECT NO: 6388-2

AUG. 2003
 AUG. 2003
 AUG. 2003

SCALE: 1" = 40' HORIZ.
 1" = 4' VERT.

EXPIRES 06-30-04

PROFESSIONAL ENGINEER STATE OF NEVADA
 AARON M. YAMACHIKA
 CIVIL
 LICENSE NO. 18019

SHEET
 SS2
 18 OF 25 SHEETS
 DRAWING NO.
 1074781-2

6407

Avoid cutting underground utility lines. It's costly.
 Call before you Dig
 1-800-227-2600

Avoid overhead power line contact.
 Call before you Dig
 OVERHEAD
 1-702-593-6111