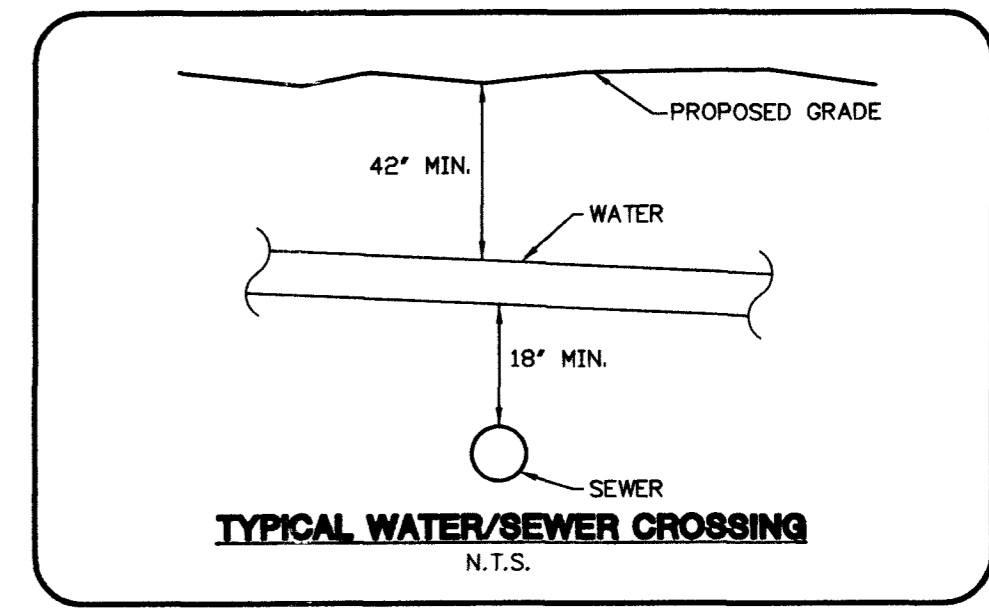
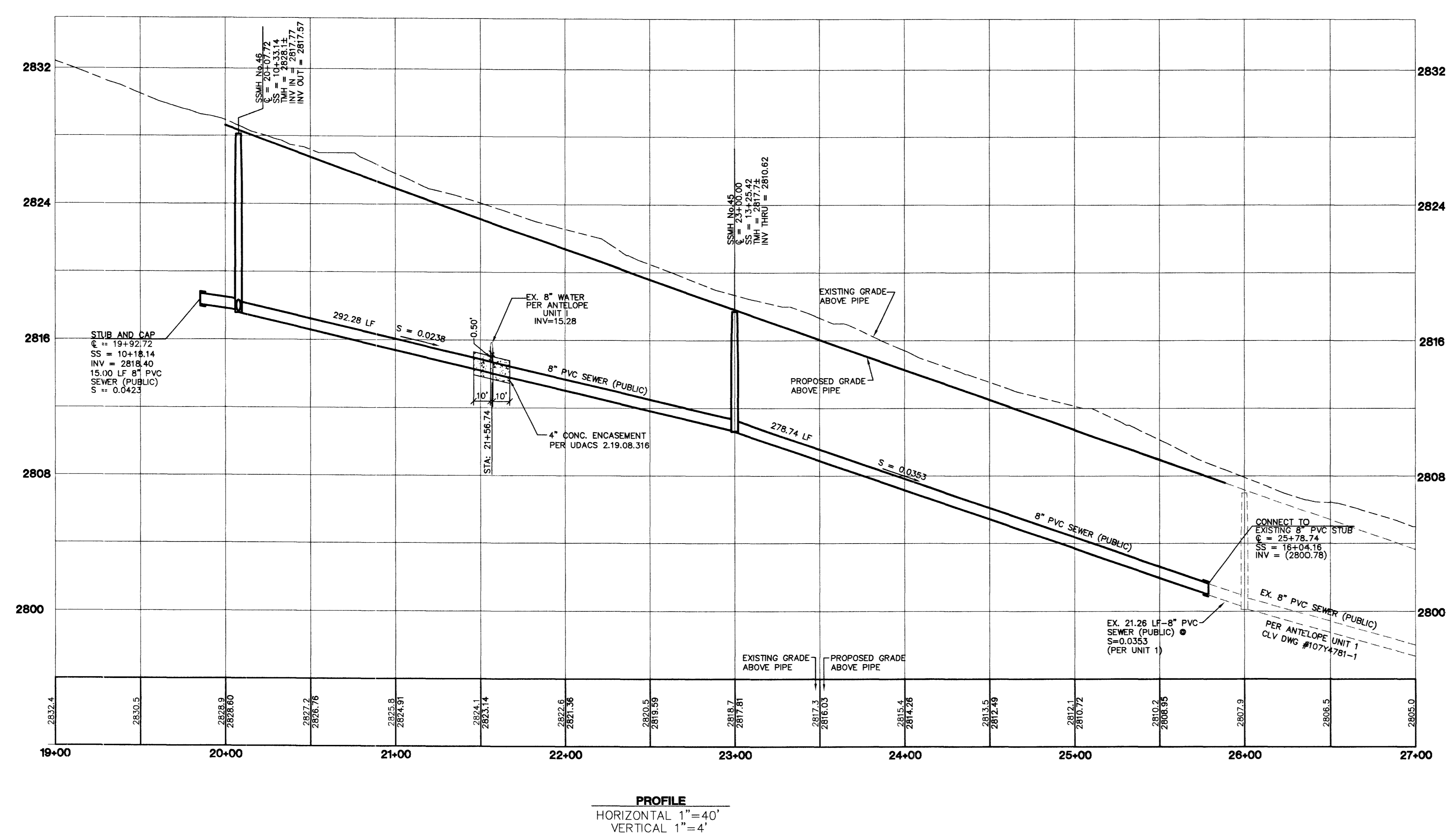
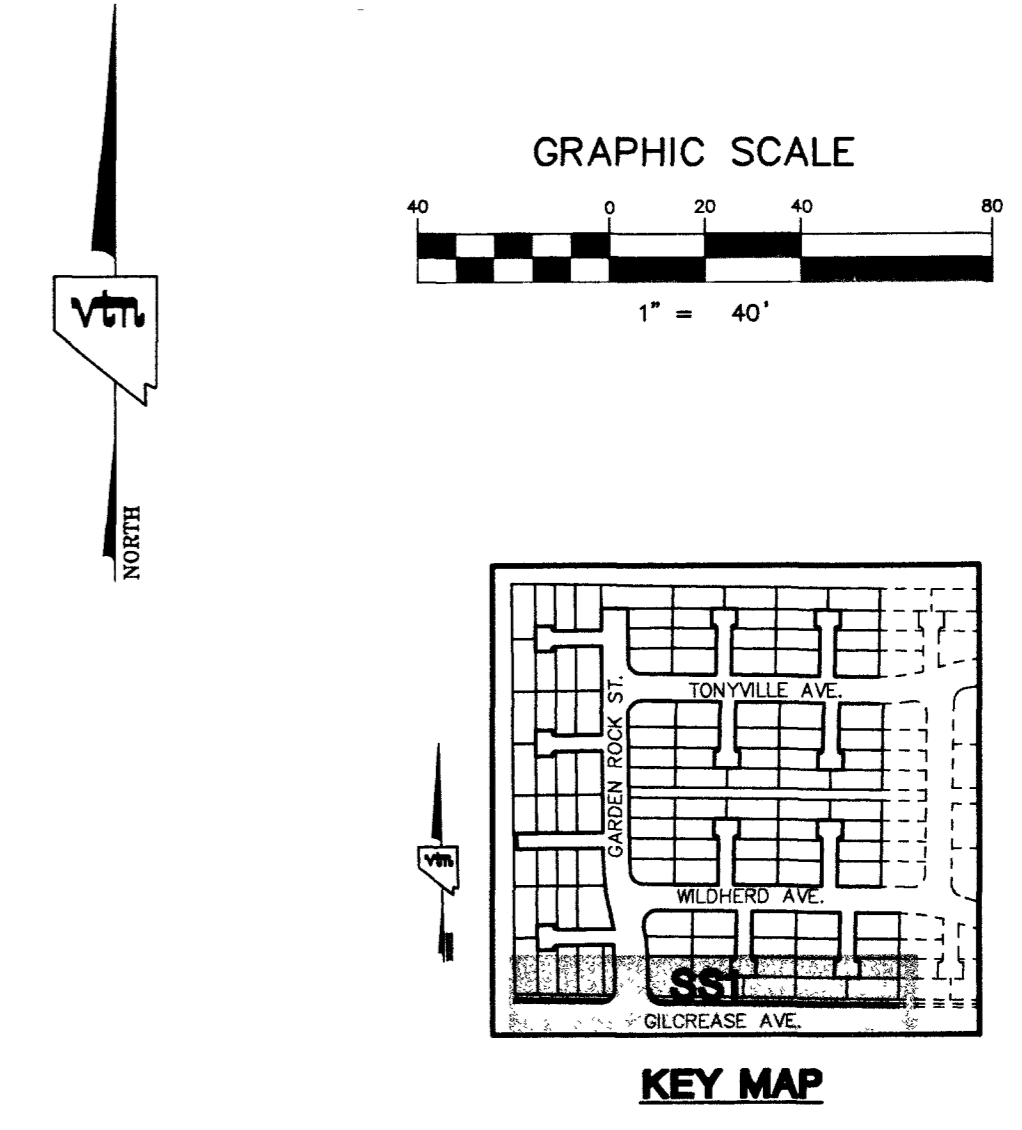
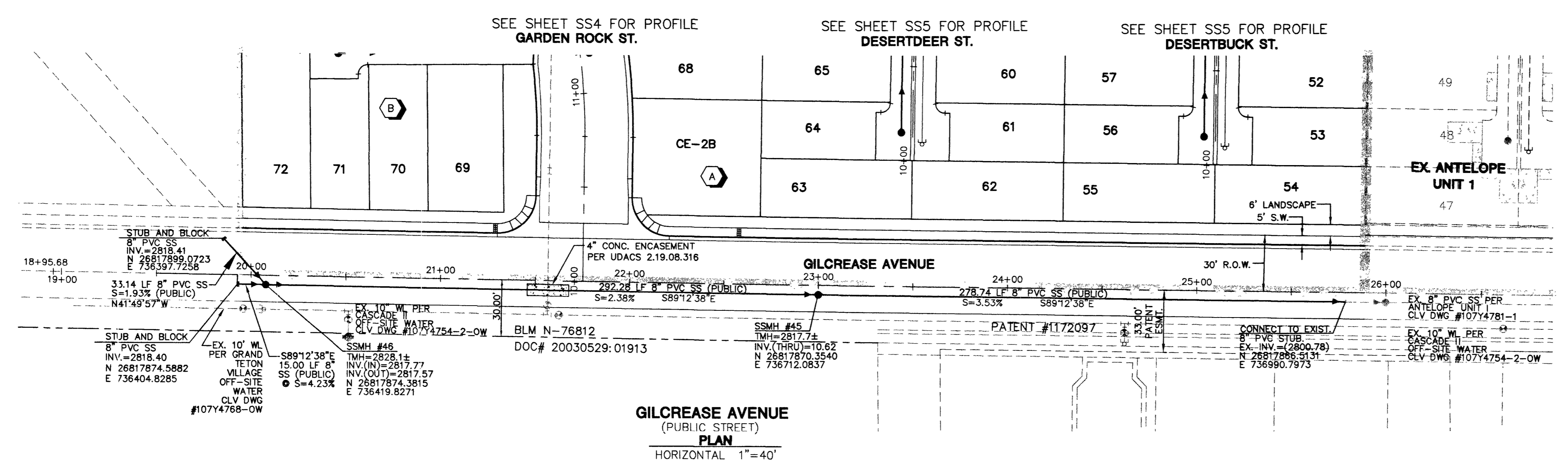
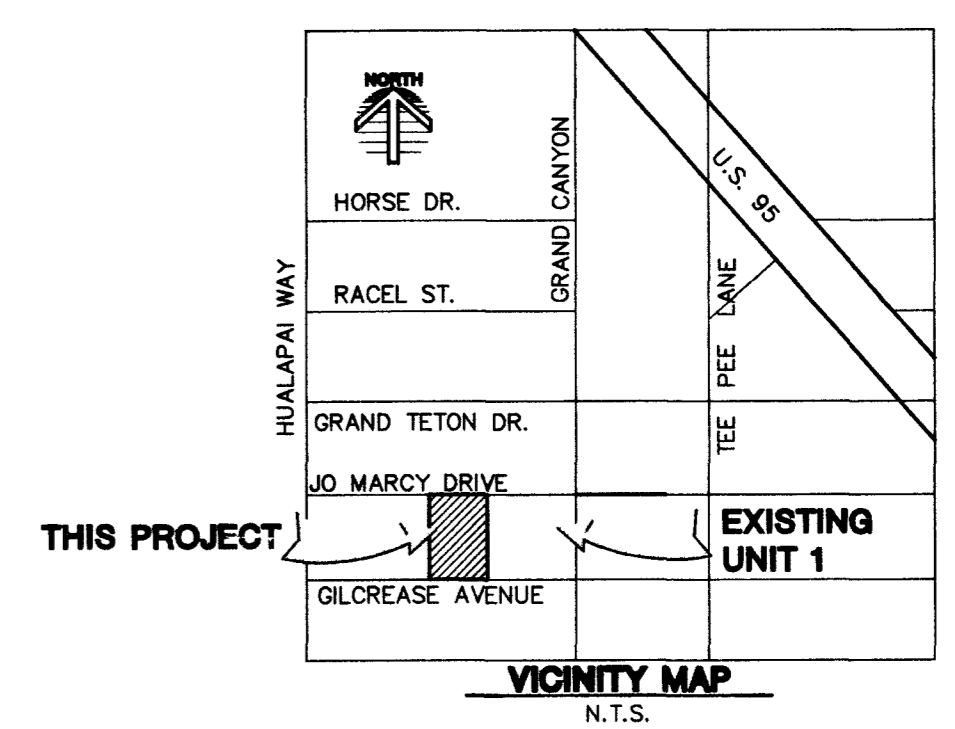


**PROJECT BENCHMARK**  
 PROJECT DATUM: NORTH AMERICAN VERTICAL DATUM OF 1988 (NAVD88)  
 CITY OF LAS VEGAS BENCHMARK: 009017N6  
 ELEVATION: 799.0857 METERS (2,621.67 FEET)  
 RIVET AND SQUARE ALUMINUM PLATE IN TOP CENTER OF HEADWALL ON THE WEST SIDE OF U.S. 95 NEAR MILE MARKER 90.15.

**BASIS OF BEARING:**  
 SOUTH 89°10'24" EAST - BEING THE SOUTH LINE OF THE NORTHWEST QUARTER (NW 1/4) OF THE NORTHEAST QUARTER (NE 1/4) OF SECTION 18, TOWNSHIP 19 SOUTH, RANGE 60 EAST, M.D.M., CLARK COUNTY, NEVADA AS SHOWN BY THAT RECORD OF SURVEY ON FILE IN THE OFFICE OF THE COUNTY RECORDER, CLARK COUNTY, NEVADA, IN FILE 114 OF SURVEYS, AT PAGE 57.

**NOTE:**  
 ALL STREETS ARE PRIVATE DRIVES UNLESS OTHERWISE NOTED.  
 ALL PRIVATE STREETS AND DRIVES ARE P.U.E., PUBLIC SEWER EASEMENTS, AND PUBLIC DRAINAGE EASEMENTS TO BE PRIVATELY MAINTAINED BY HOA.



GREYSTONE HOMES		CITY OF LAS VEGAS, NEVADA	
SEWER PLAN & PROFILE		ANTELOPE UNIT 2	
GILCREASE AVENUE		ANTELOPE UNIT 2	
DRAWN BY:	AUG. 2003	DESIGNED BY:	AUG. 2003
KCH		NGI	
CHECKED BY:	AUG. 2003	PROJECT NO.:	5586P-2
EST		SCALE:	1"=40' HORIZ. 1"=4' VERT.
EXPIRES 08-30-04			
SHEET		SS1	
17 OF 25 SHEETS		DRAWING NO.	
10774781-2			

Call before you Dig **OVERHEAD**  
 1-800-227-2600 1-702-593-6111

64076