

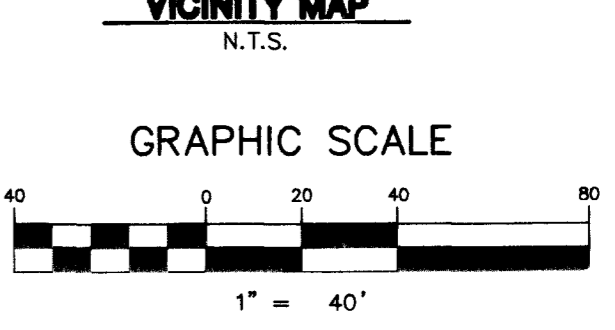
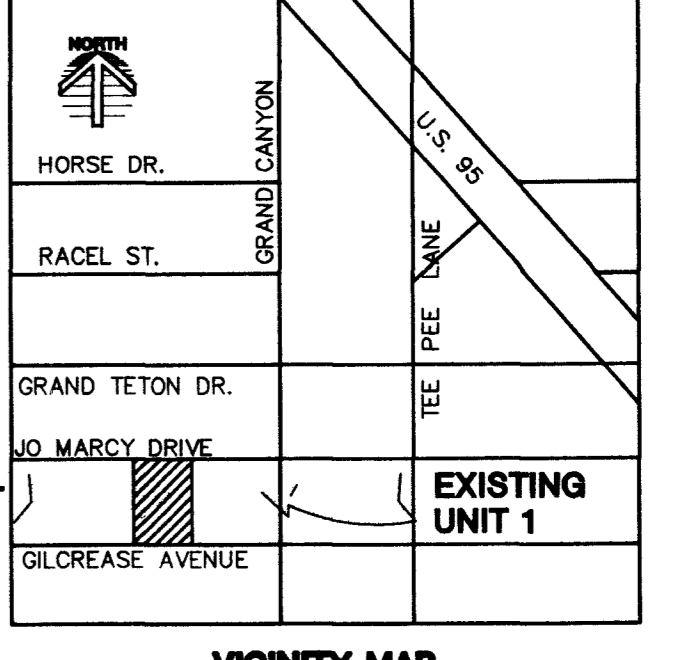
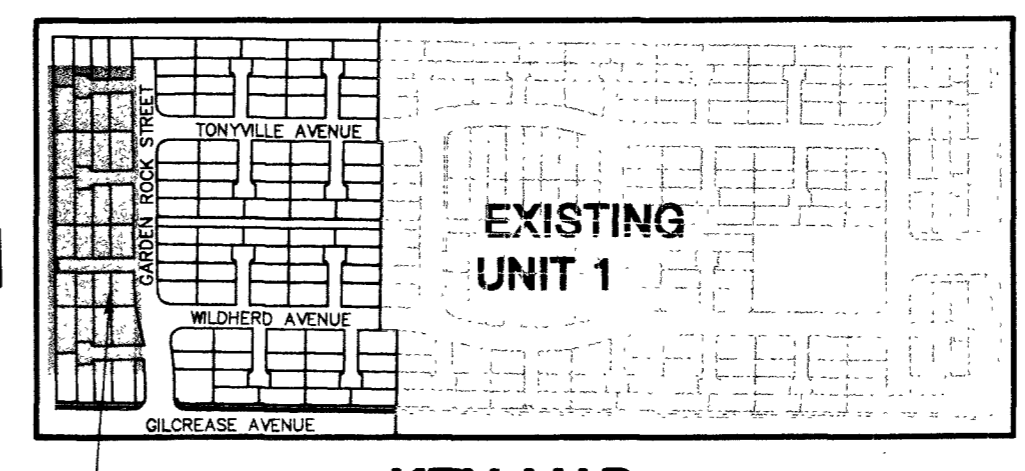
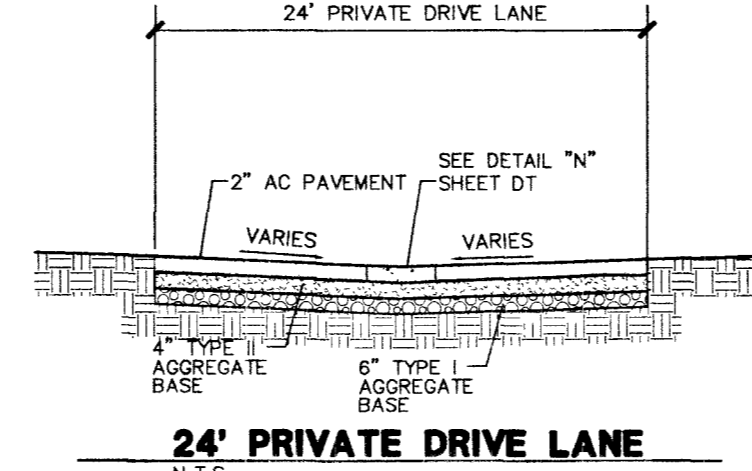
PROJECT BENCHMARK
 PROJECT DATUM: NORTH AMERICAN VERTICAL DATUM OF 1988 (NAVD88)
 CITY OF LAS VEGAS BENCHMARK: OC9017N6
 ELEVATION: 799.0857 METERS (2,621.67 FEET)
 RIVET AND SQUARE ALUMINUM PILE IN TOP CENTER OF HEADWALL ON THE WEST SIDE OF U.S. 95 NEAR MILE MARKER 90.15.

BASIS OF BEARING
 SOUTH 89°10'24" EAST BEING THE SOUTH LINE OF THE NORTHWEST QUARTER (NW 1/4) OF THE NORTHEAST QUARTER (NE 1/4) OF SECTION 18, TOWNSHIP 19 SOUTH, RANGE 60 EAST, M.D.M., CLARK COUNTY, NEVADA AS SHOWN BY THAT RECORD OF SURVEY ON FILE IN THE OFFICE OF THE COUNTY RECORDER, CLARK COUNTY, NEVADA, IN FILE 114 OF SURVEYS, AT PAGE 57.

NOTE
 ALL STREETS ARE PRIVATE UNLESS OTHERWISE NOTED.
 ALL PRIVATE STREETS AND DRIVES ARE P.U.E., PUBLIC SEWER EASEMENTS, AND PUBLIC DRAINAGE EASEMENTS TO BE PRIVATELY MAINTAINED BY HOA.

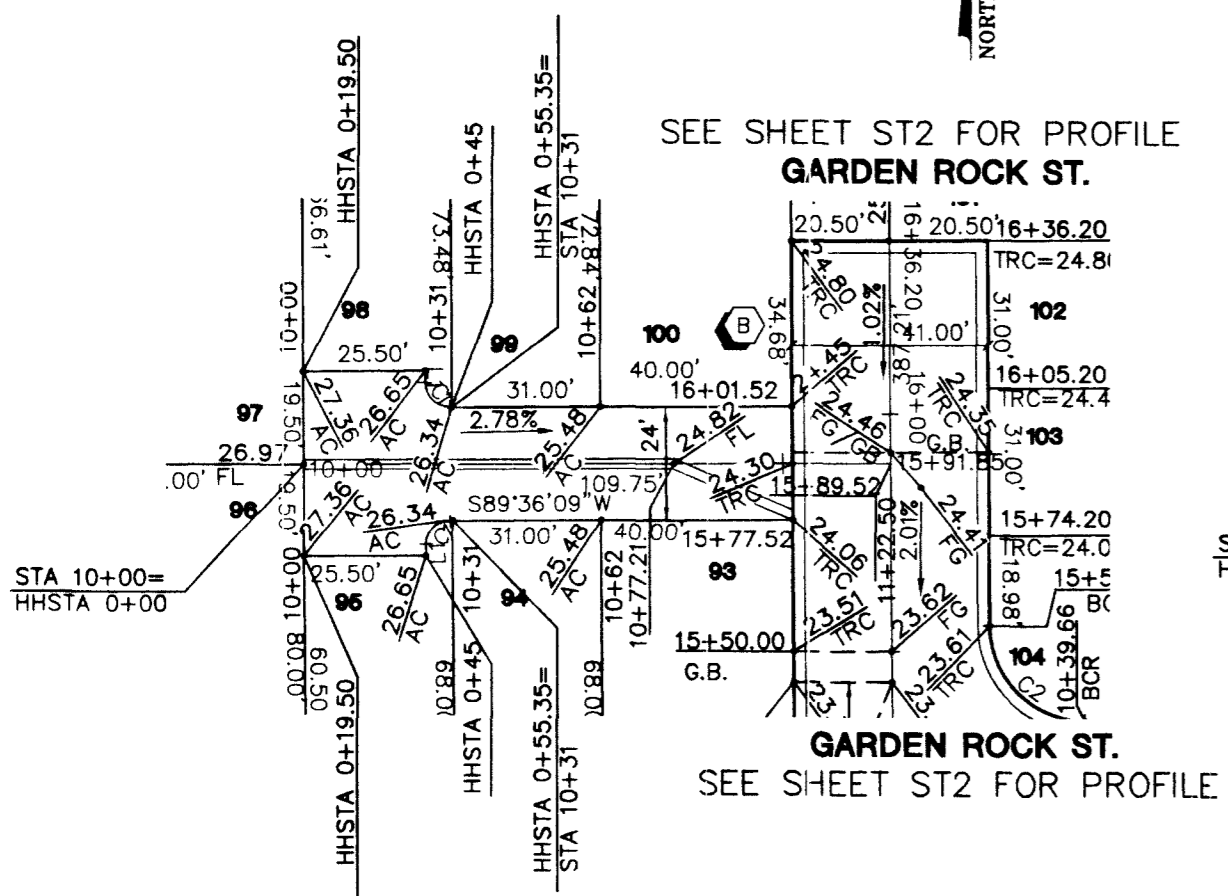
CURVE TABLE				
CURVE	LENGTH	RADIUS	DELTA	TANGENT
C1	7.85'	5.00'	190°00'00"	5.00'

LINE TABLE		
LINE	LENGTH	BEARING
L1	2.50'	S00°23'51"E

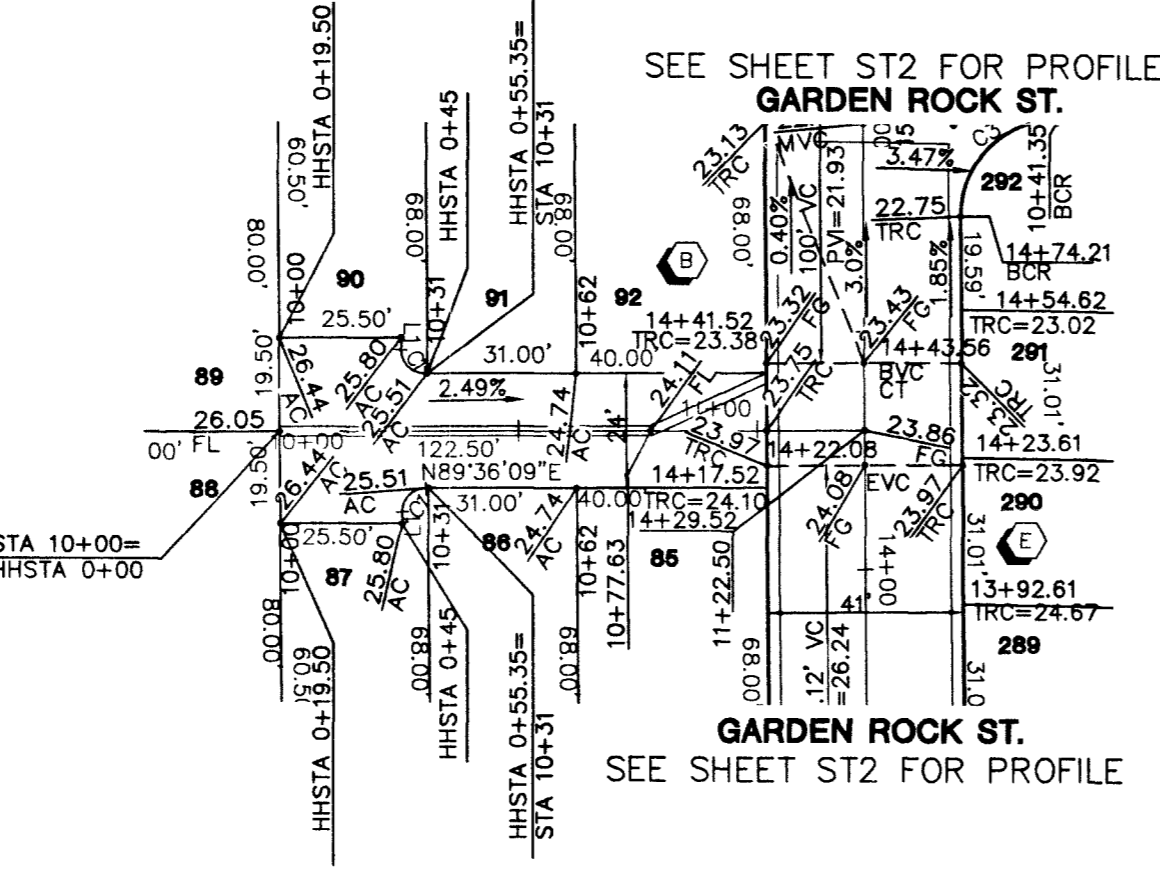


Call before you Dig
 1-800-227-2600

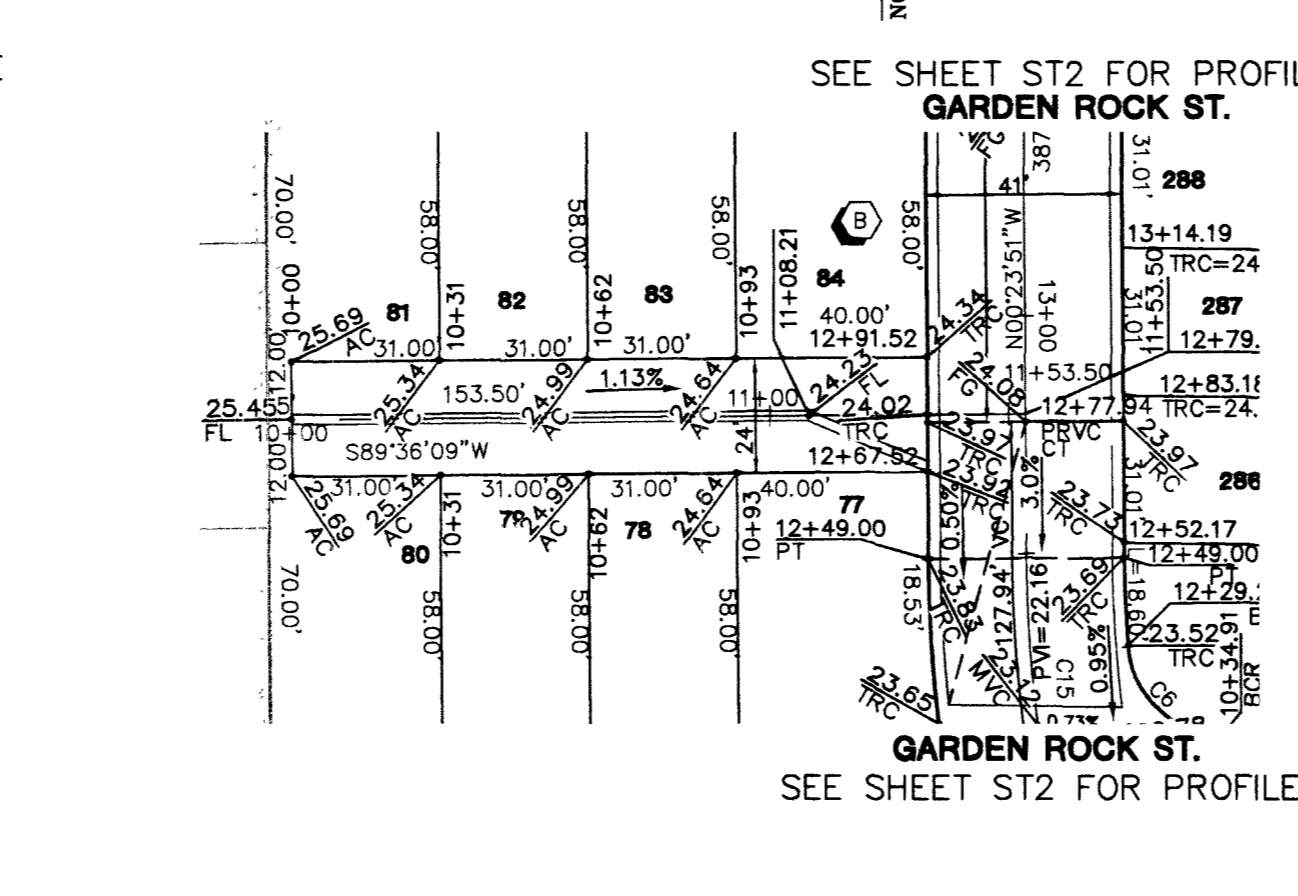
Call before you Overhead
 1-702-593-6111



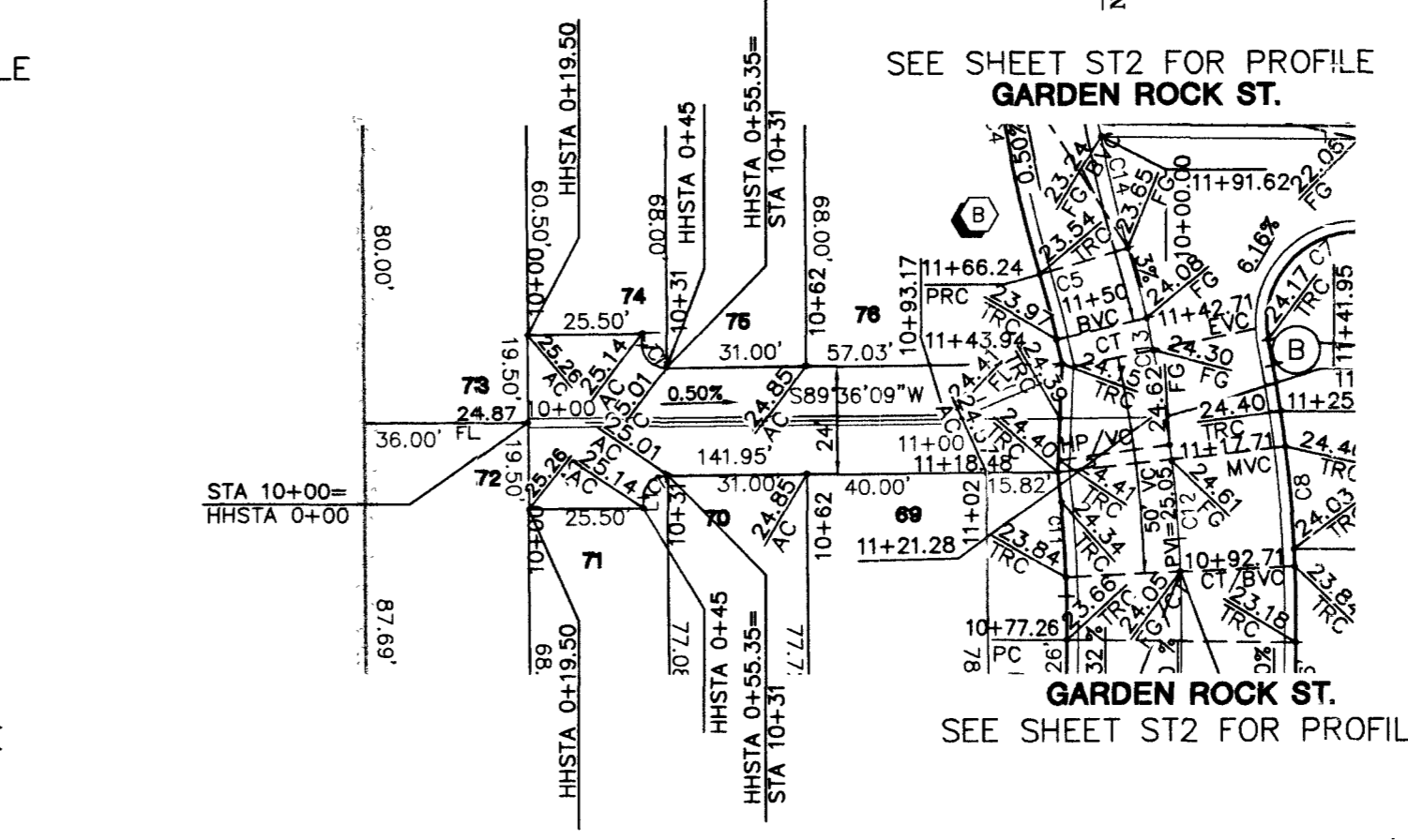
MARKHORN AVE
 (PRIVATE STREET)
PLAN
 HORIZONTAL 1"=40'



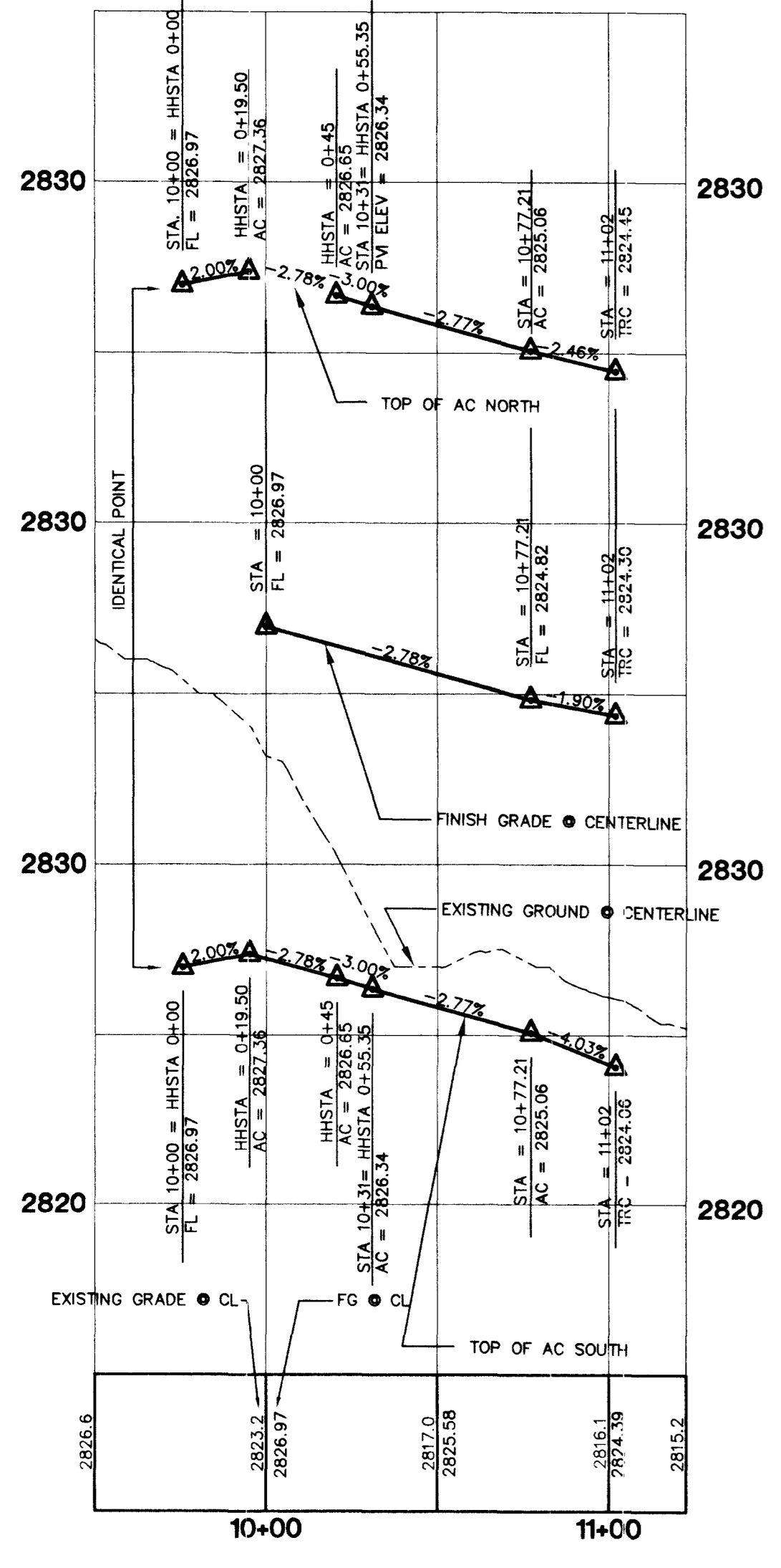
KUDO AVE
 (PRIVATE STREET)
PLAN
 HORIZONTAL 1"=40'



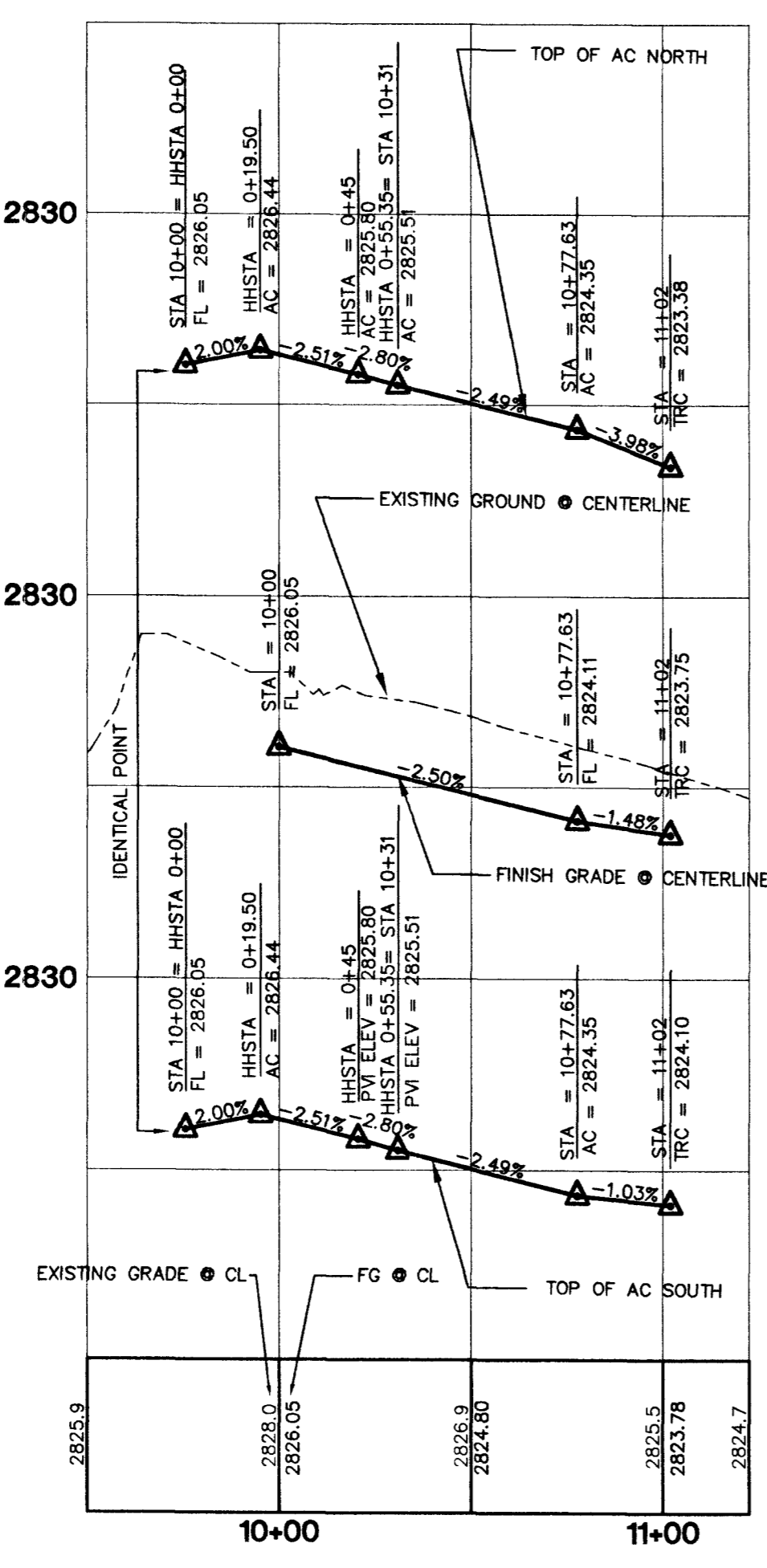
KALAHARI AVE
 (PRIVATE STREET)
PLAN
 HORIZONTAL 1"=40'



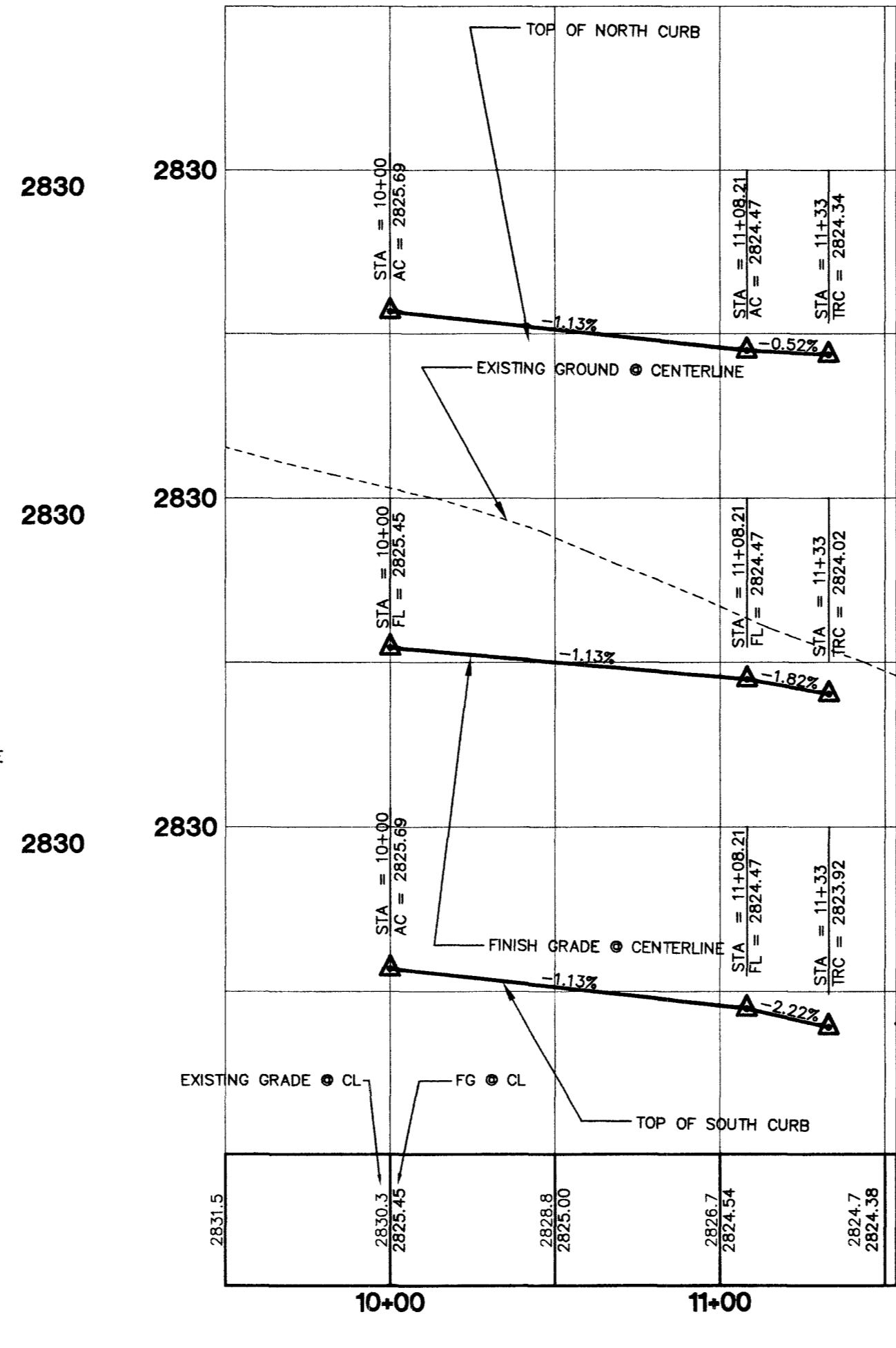
FALLOWDEER AVE
 (PRIVATE STREET)
PLAN
 HORIZONTAL 1"=40'



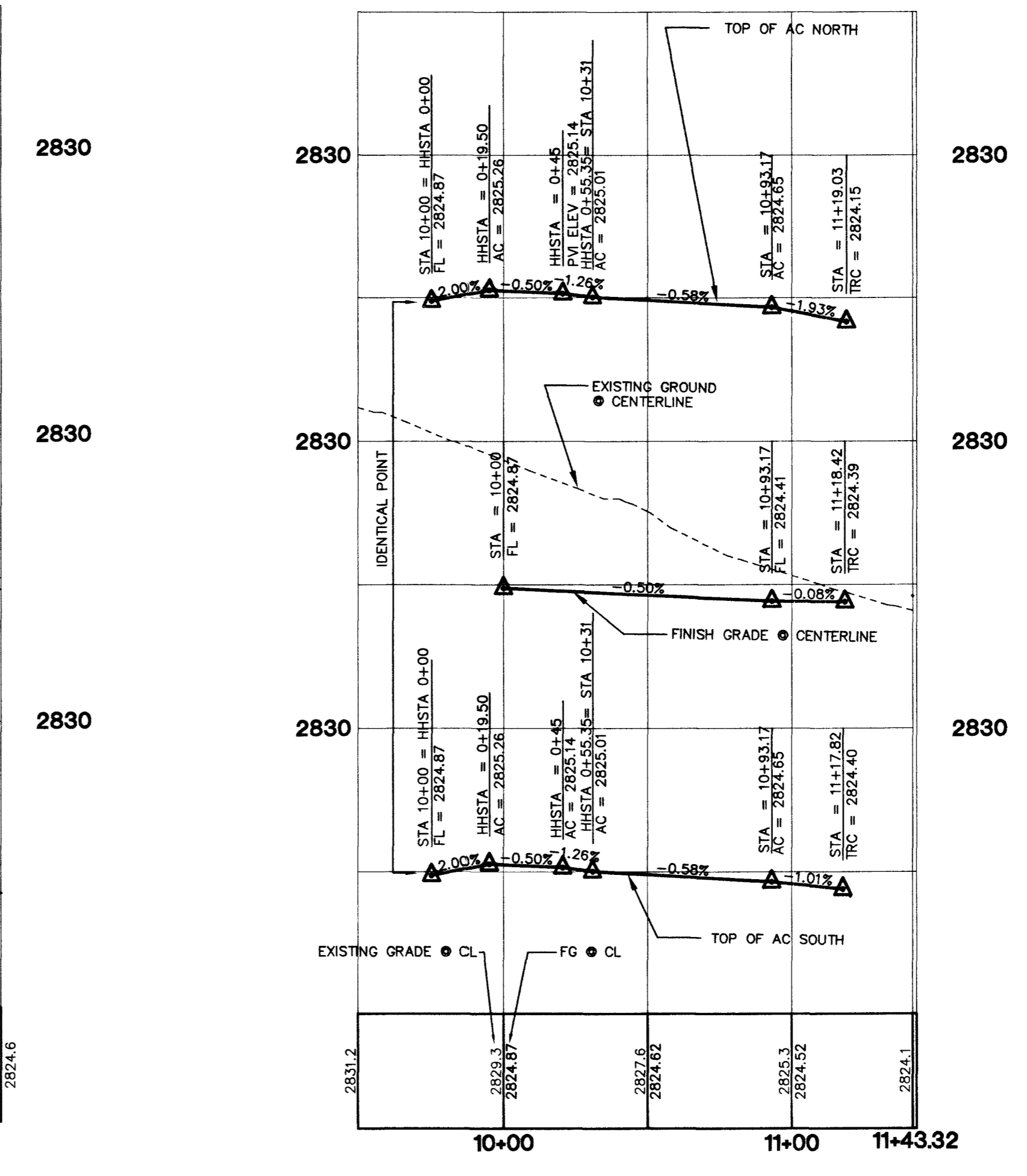
PROFILE
 HORIZONTAL 1"=40'
 VERTICAL 1"=4'



PROFILE
 HORIZONTAL 1"=40'
 VERTICAL 1"=4'



PROFILE
 HORIZONTAL 1"=40'
 VERTICAL 1"=4'



PROFILE
 HORIZONTAL 1"=40'
 VERTICAL 1"=4'

GREYSTONE HOMES
 CITY OF LAS VEGAS, NEVADA
 3785 E. SUNSET #81 LAS VEGAS, NEVADA 89120
 2727 SOUTH RAINBOW BOULEVARD LAS VEGAS, NEVADA 89146-8148
 PH. (702) 873-7550 FAX (702) 362-2597

ANTELOPE UNIT 2

STREET PLAN & PROFILE
 MARKHORN AVE - KUDO AVE
 KALAHARI AVE - FALLOWDEER AVE

DRAWN BY: AB
 DESIGNED BY: AB
 CHECKED BY: CZ
 PROJECT NO: 6388-2
 EXPIRES 06-30-04
 AUG. 2003
 AUG. 2003
 AUG. 2003
 SCALE: 1"=40' HORIZ.
 1"=4' VERT.

PROFESSIONAL ENGINEER - STATE OF NEVADA
 AARON M. YAMACHIKA
 CIVIL
 LICENSE NO. 16079

SHEET
ST7
 16 OF 25 SHEETS
 DRAWING NO.
 10714781-2