

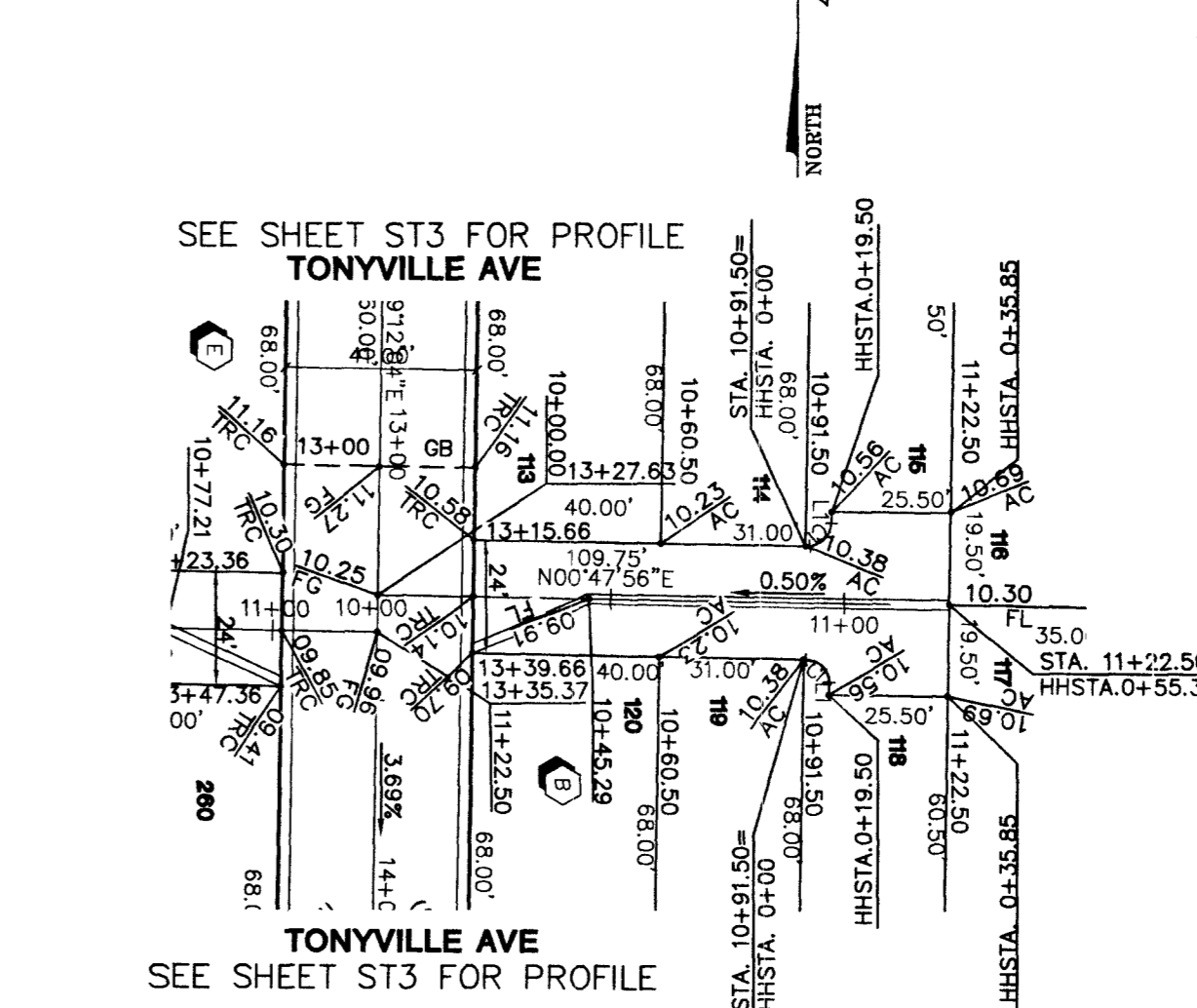
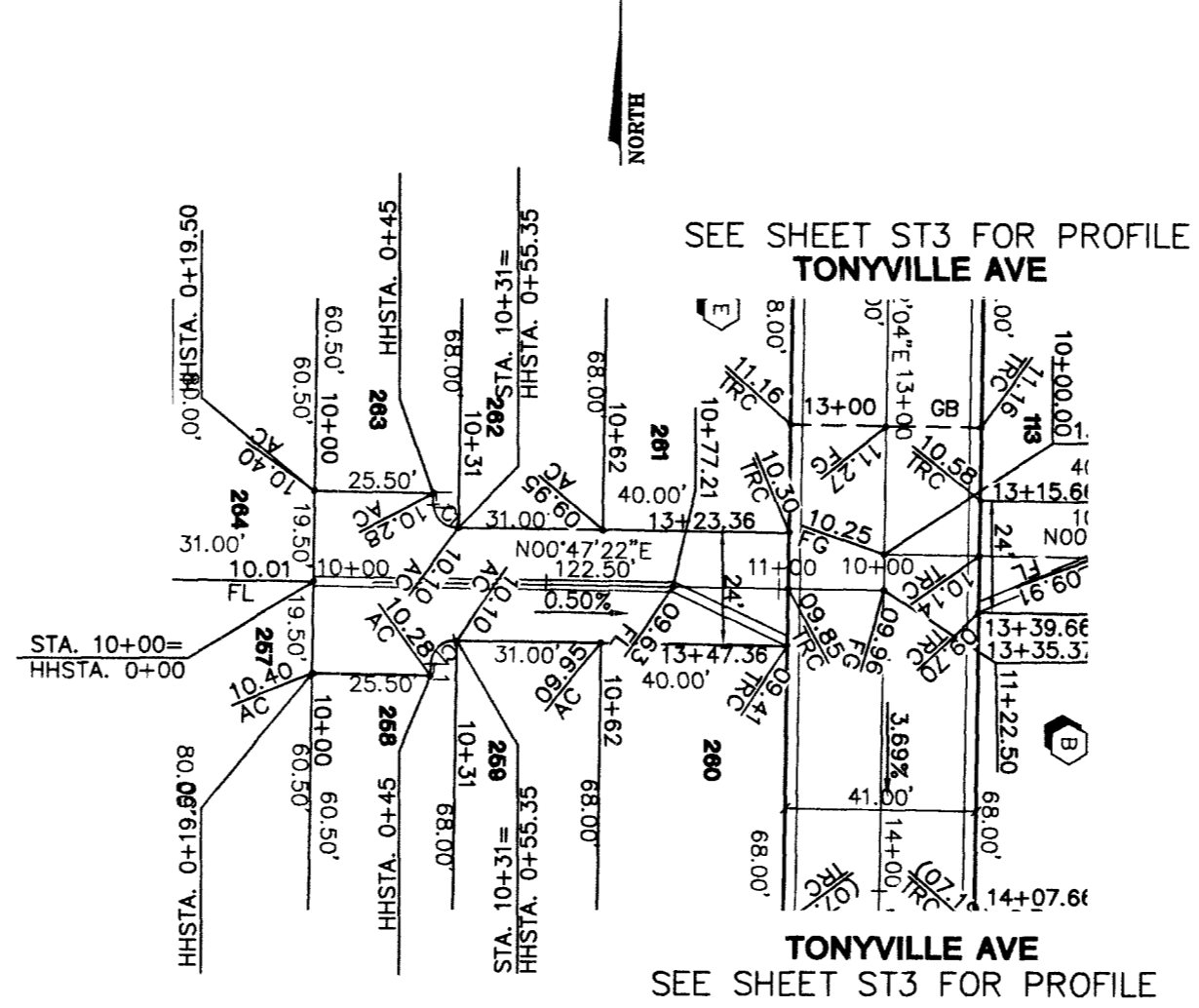
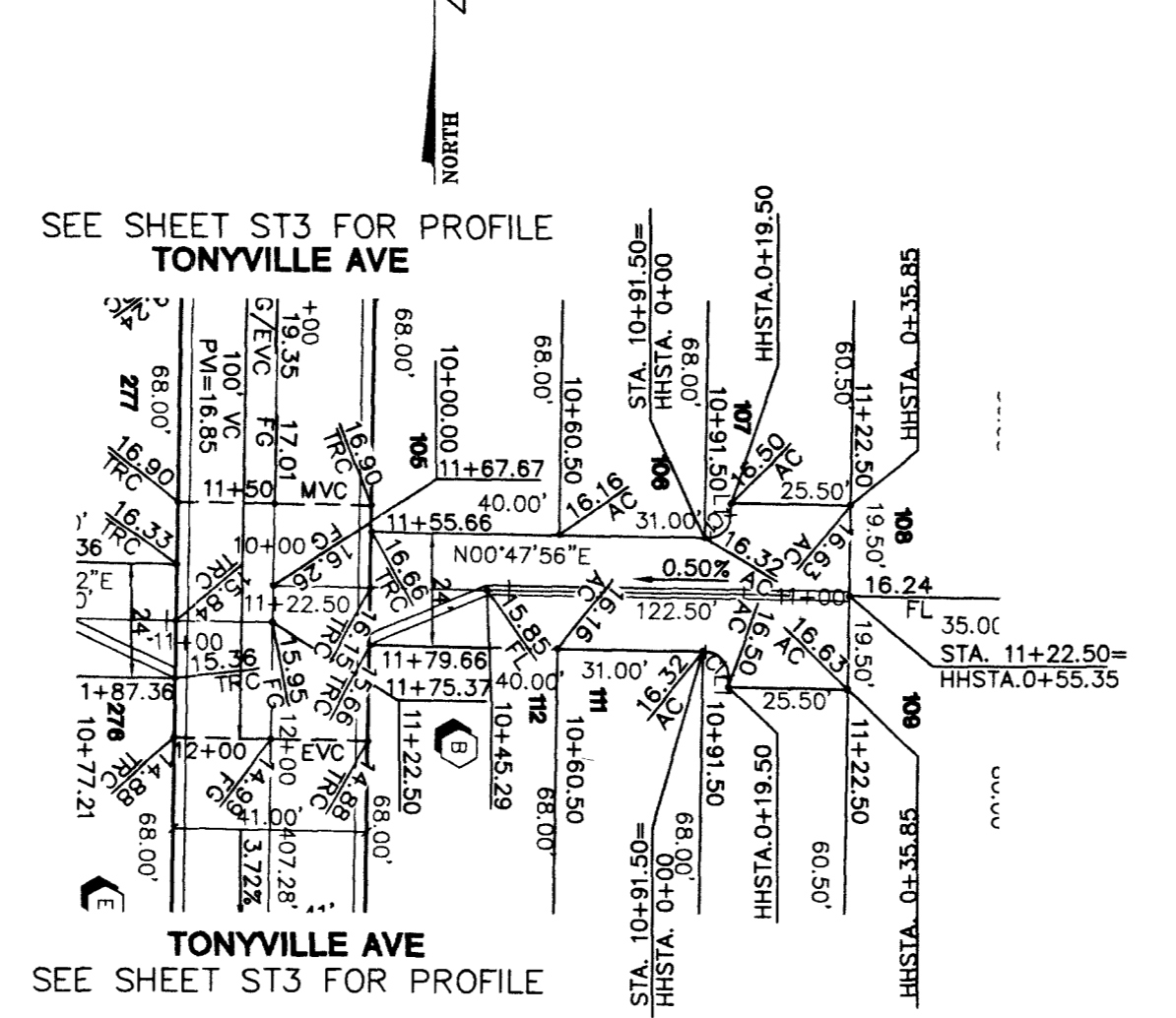
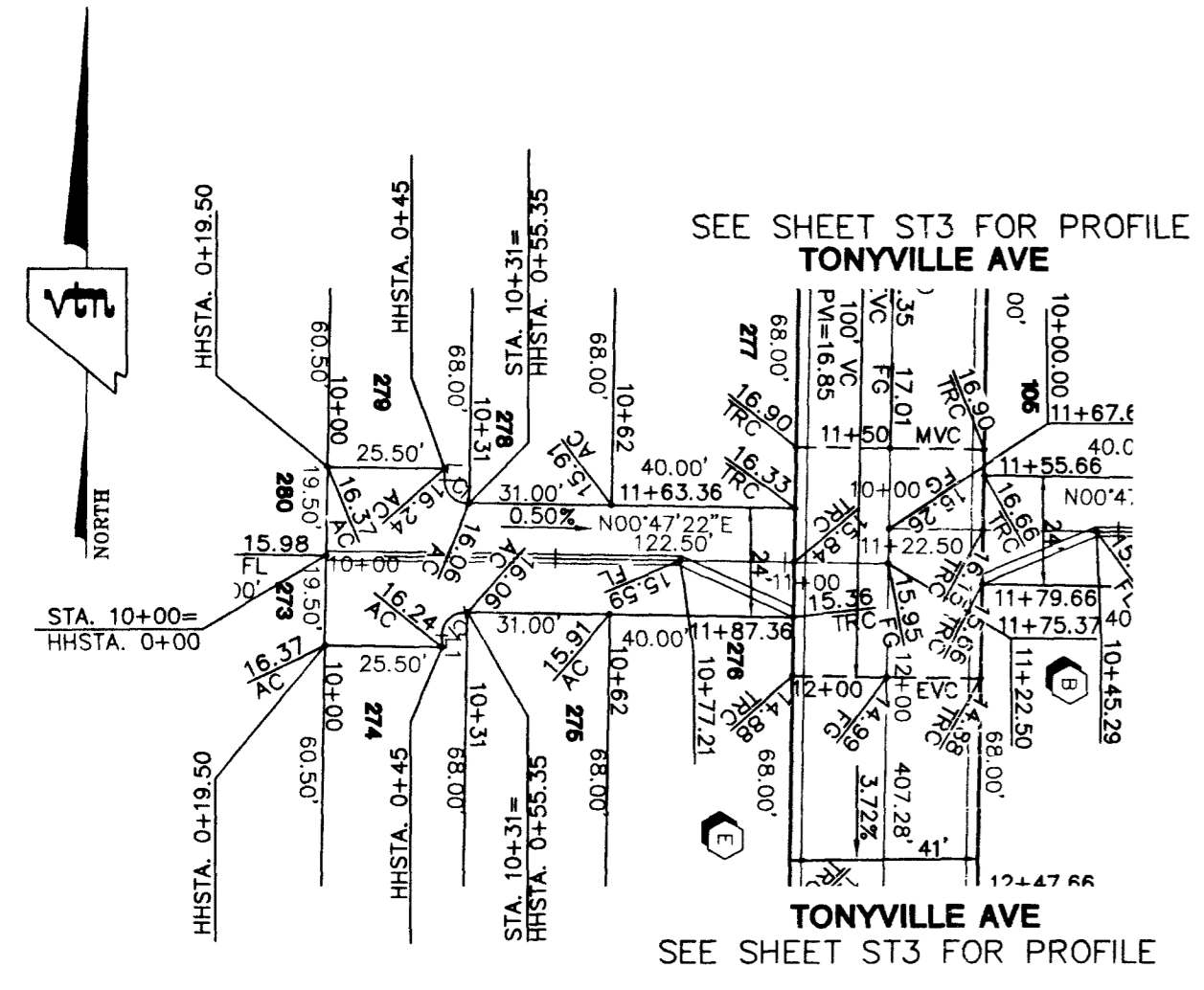
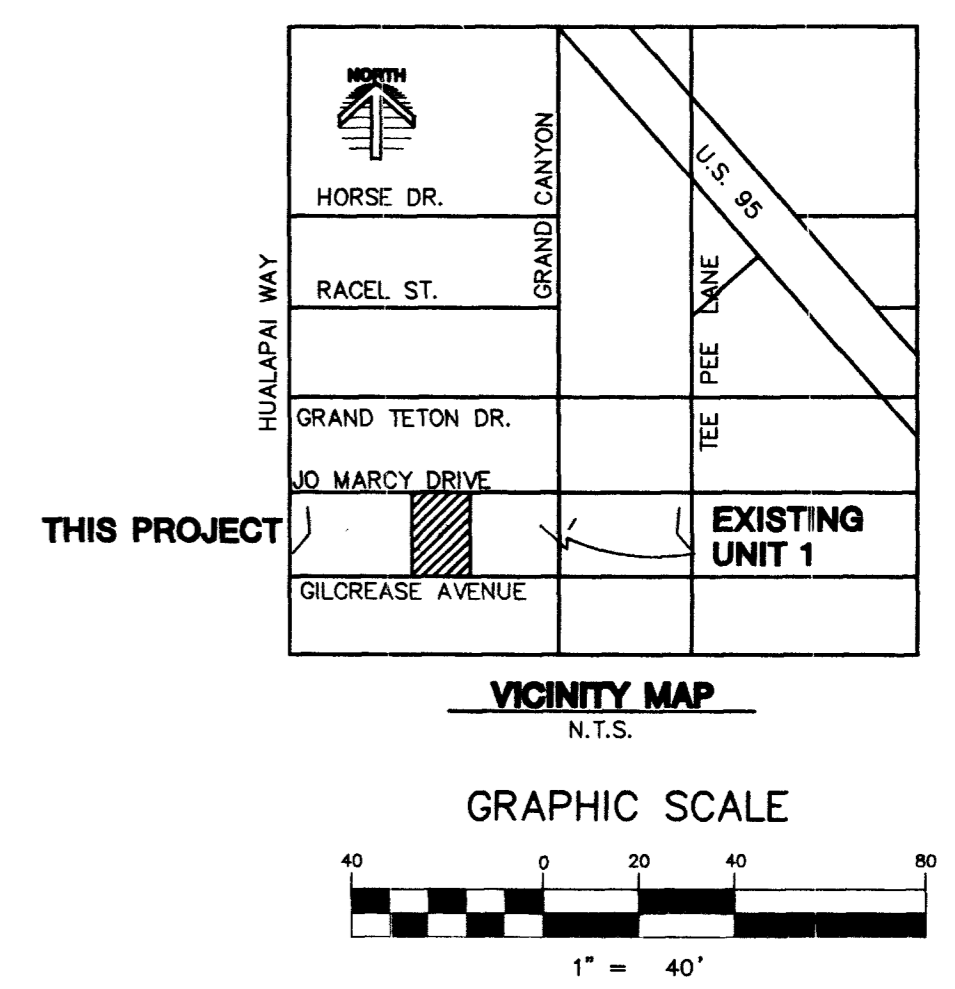
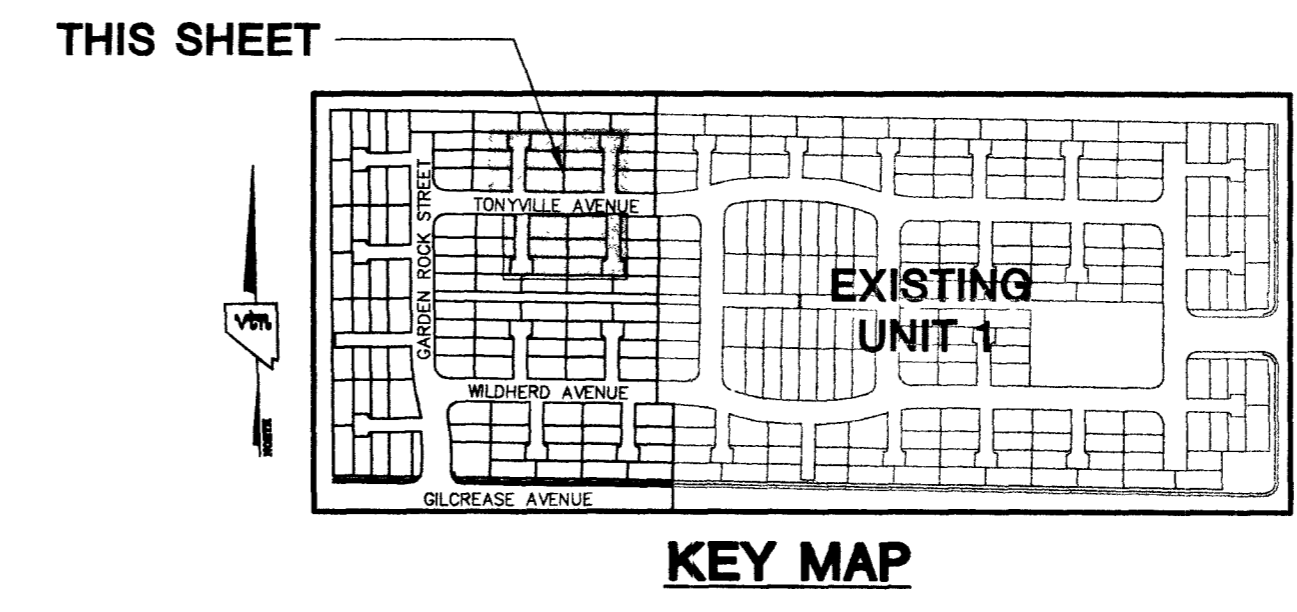
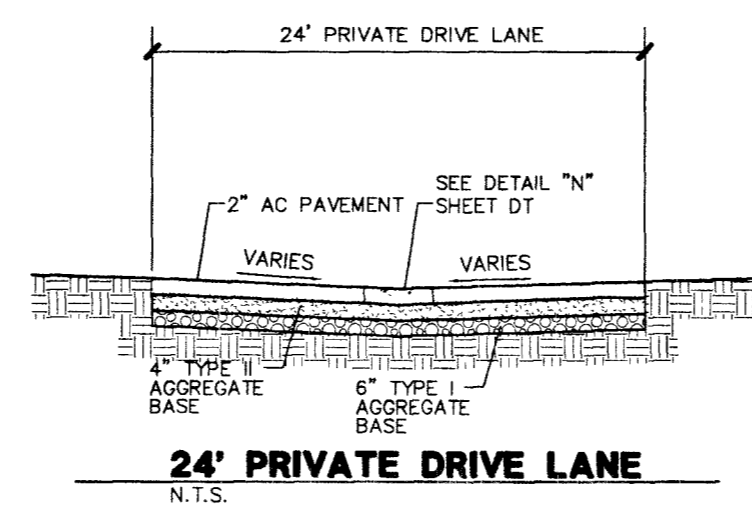
PROJECT BENCHMARK
 PROJECT DATUM: NORTH AMERICAN VERTICAL DATUM OF 1988 (NAVD88)
 CITY OF LAS VEGAS BENCHMARK: 0C9017N6
 ELEVATION: 799.0857 METERS (2,621.67 FEET)
 RIVET AND SQUARE ALUMINUM PLATE IN TOP CENTER OF HEADWALL ON THE WEST SIDE OF U.S. 95 NEAR MILE MARKER 90.15.

BASIS OF BEARING:
 SOUTH 89°10'24" EAST - BEING THE SOUTH LINE OF THE NORTHWEST QUARTER (NW 1/4) OF THE NORTHEAST QUARTER (NE 1/4) OF SECTION 18, TOWNSHIP 19 SOUTH, RANGE 60 EAST, M.D.M., CLARK COUNTY, NEVADA AS SHOWN BY THAT RECORD OF SURVEY ON FILE IN THE OFFICE OF THE COUNTY RECORDER, CLARK COUNTY, NEVADA, IN FILE 114 OF SURVEYS, AT PAGE 57.

NOTE
 ALL STREETS ARE PRIVATE UNLESS OTHERWISE NOTED.
 ALL PRIVATE STREETS AND DRIVES ARE P.U.E., PUBLIC SEWER EASEMENTS, AND PUBLIC DRAINAGE EASEMENTS TO BE PRIVATELY MAINTAINED BY HOA.

CURVE TABLE				
CURVE	LENGTH	RADIUS	DELTA	TANGENT
C1	7.85'	5.00'	90°00'00"	5.00'

LINE TABLE		
LINE	LENGTH	BEARING
L1	2.50	S00°23'51"E



Call before you Dig
 1-800-227-2600

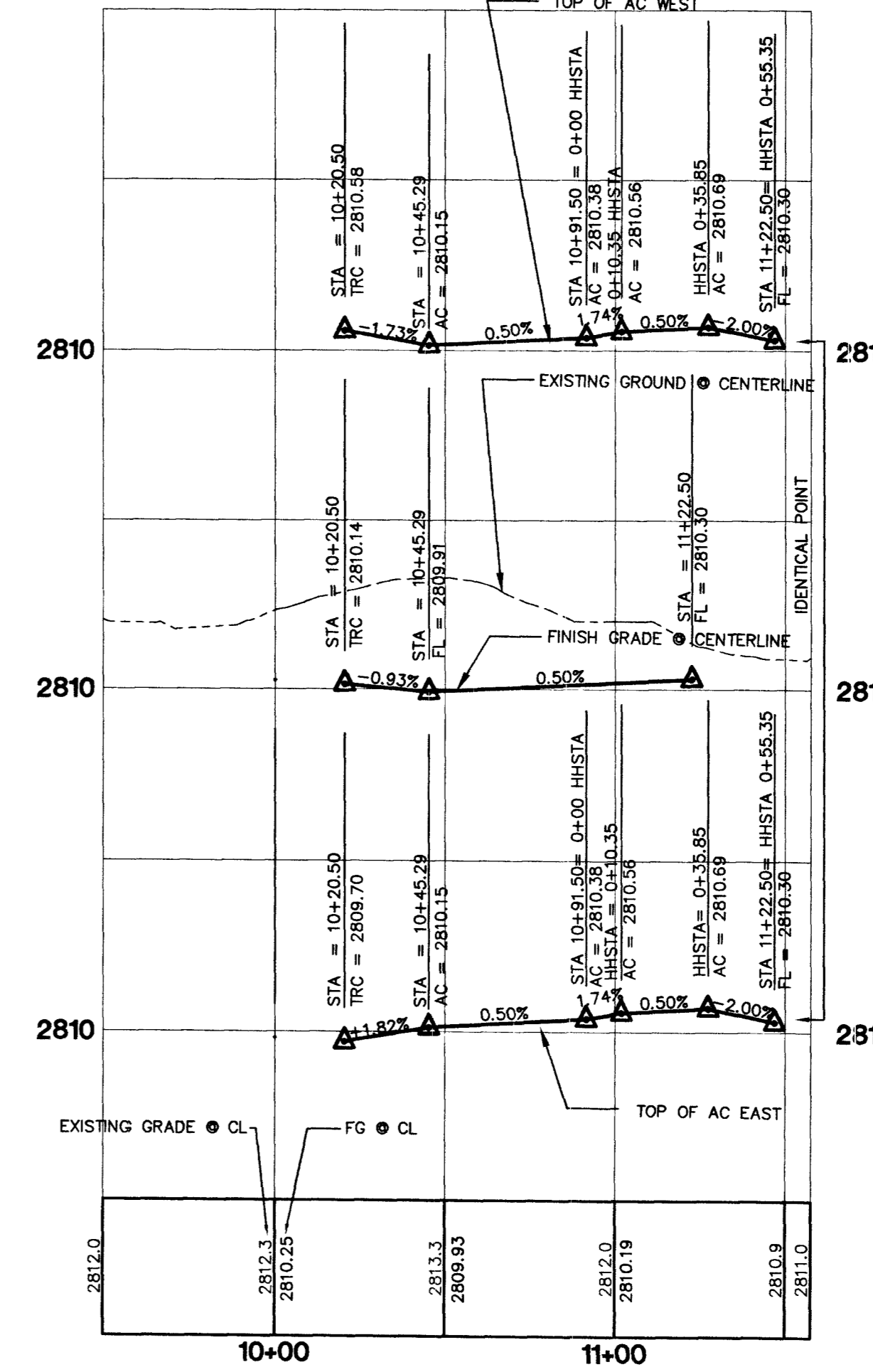
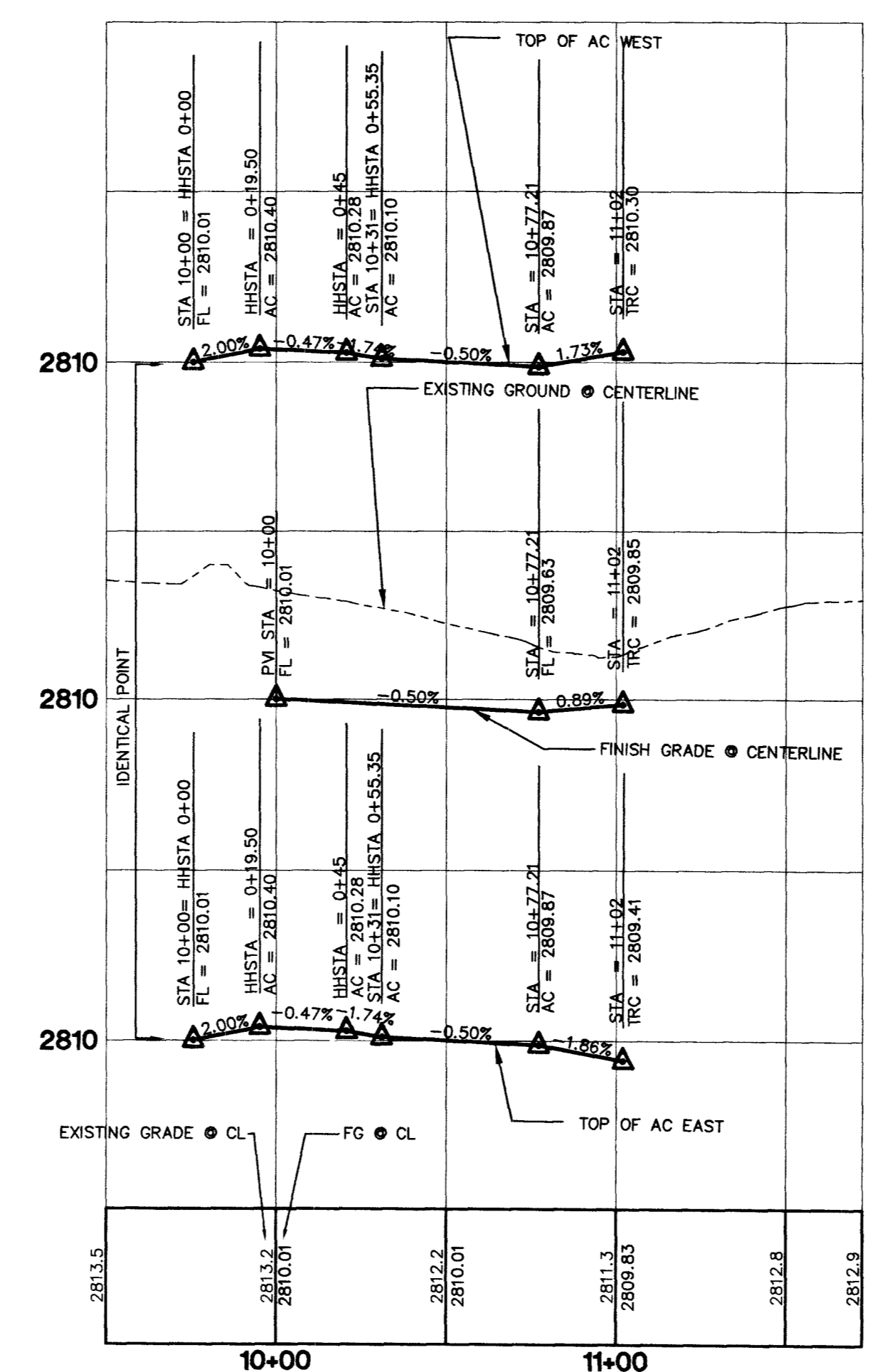
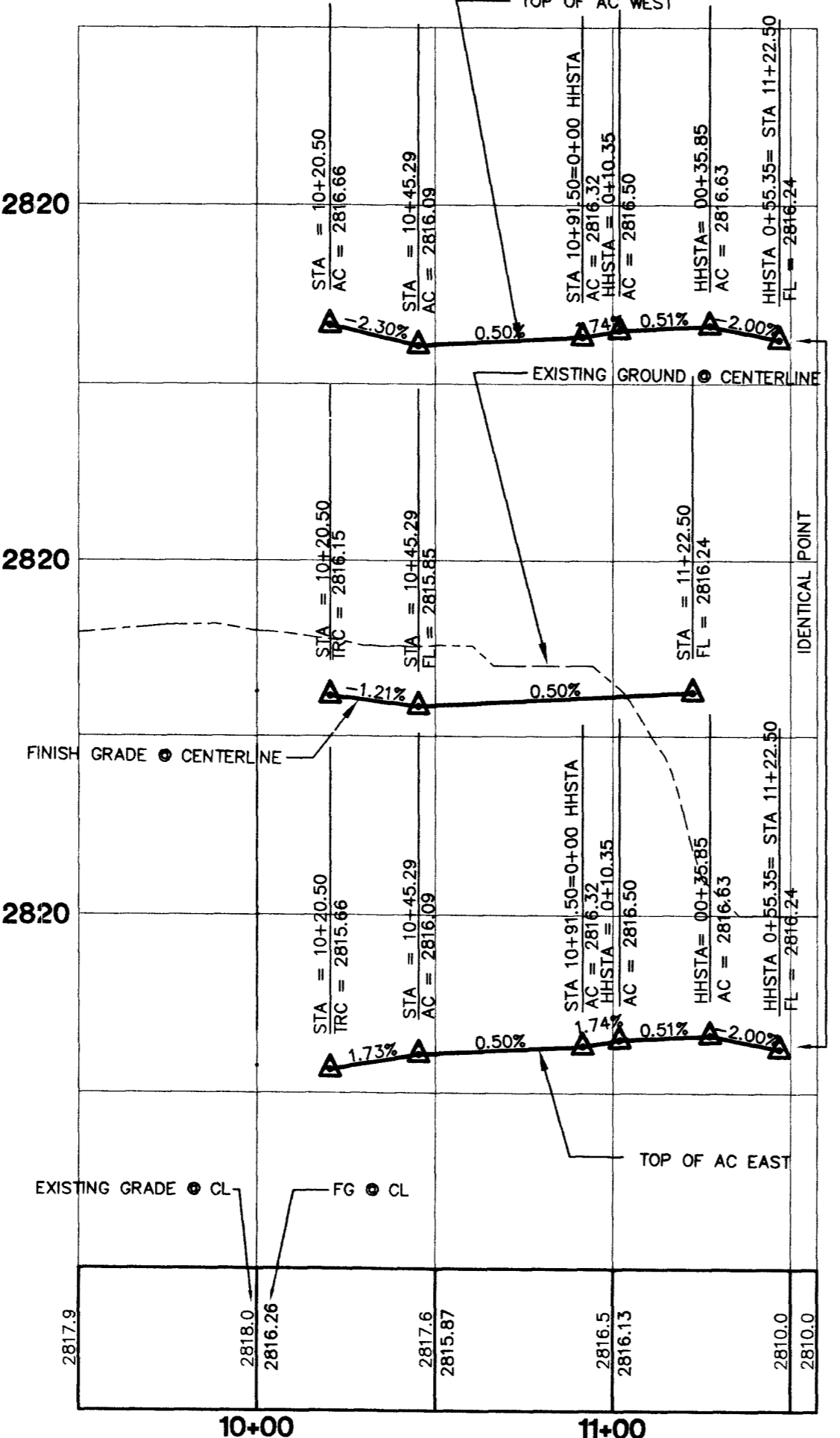
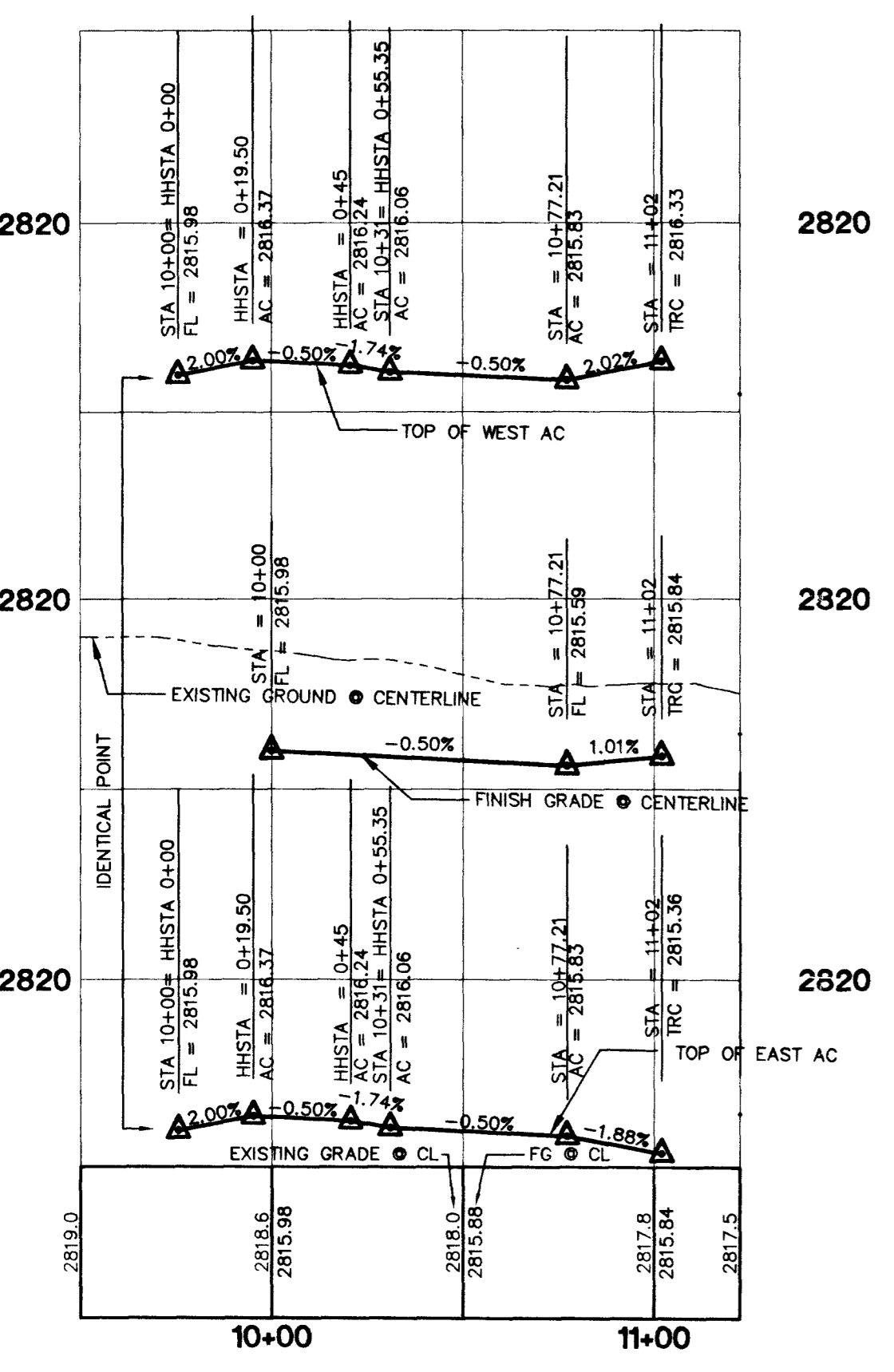
Call before you OVERHEAD
 1-702-593-6111

PRONGHORN ST.
 (PRIVATE STREET)
 PLAN
 HORIZONTAL 1"=40'

RAM ST.
 (PRIVATE STREET)
 PLAN
 HORIZONTAL 1"=40'

SOLIDHORN ST.
 (PRIVATE STREET)
 PLAN
 HORIZONTAL 1"=40'

RAMCHARGER ST.
 (PRIVATE STREET)
 PLAN
 HORIZONTAL 1"=40'



PROFILE
 HORIZONTAL 1"=40'
 VERTICAL 1"=4'

PROFILE
 HORIZONTAL 1"=40'
 VERTICAL 1"=4'

PROFILE
 HORIZONTAL 1"=40'
 VERTICAL 1"=4'

PROFILE
 HORIZONTAL 1"=40'
 VERTICAL 1"=4'

GREYSTONE HOMES
 CITY OF LAS VEGAS, NEVADA
 3785 E. SUNSET #B1
 LAS VEGAS, NEVADA 89120
 (702) 458-7700

STREET PLAN & PROFILE
 PRONGHORN ST. - RAM ST.
 SOLIDHORN ST. - RAMCHARGER ST.

ANTELOPE UNIT 2

DRAWN BY: AB
 DESIGNED BY: AB
 CHECKED BY: CZ
 PROJECT NO: 5385-2
 SCALE: 1"=40' HORIZ.
 1"=4' VERT.

EXPIRES 06-30-04
PROFESSIONAL ENGINEER SITE
 AARON M. YAMACHIKA
 CIVIL
 No. 6015 NOTED

SHEET
ST6
 15 OF 25 SHEETS
 DRAWING NO.

988-2\DWG\UNIT2\6385-2-25T