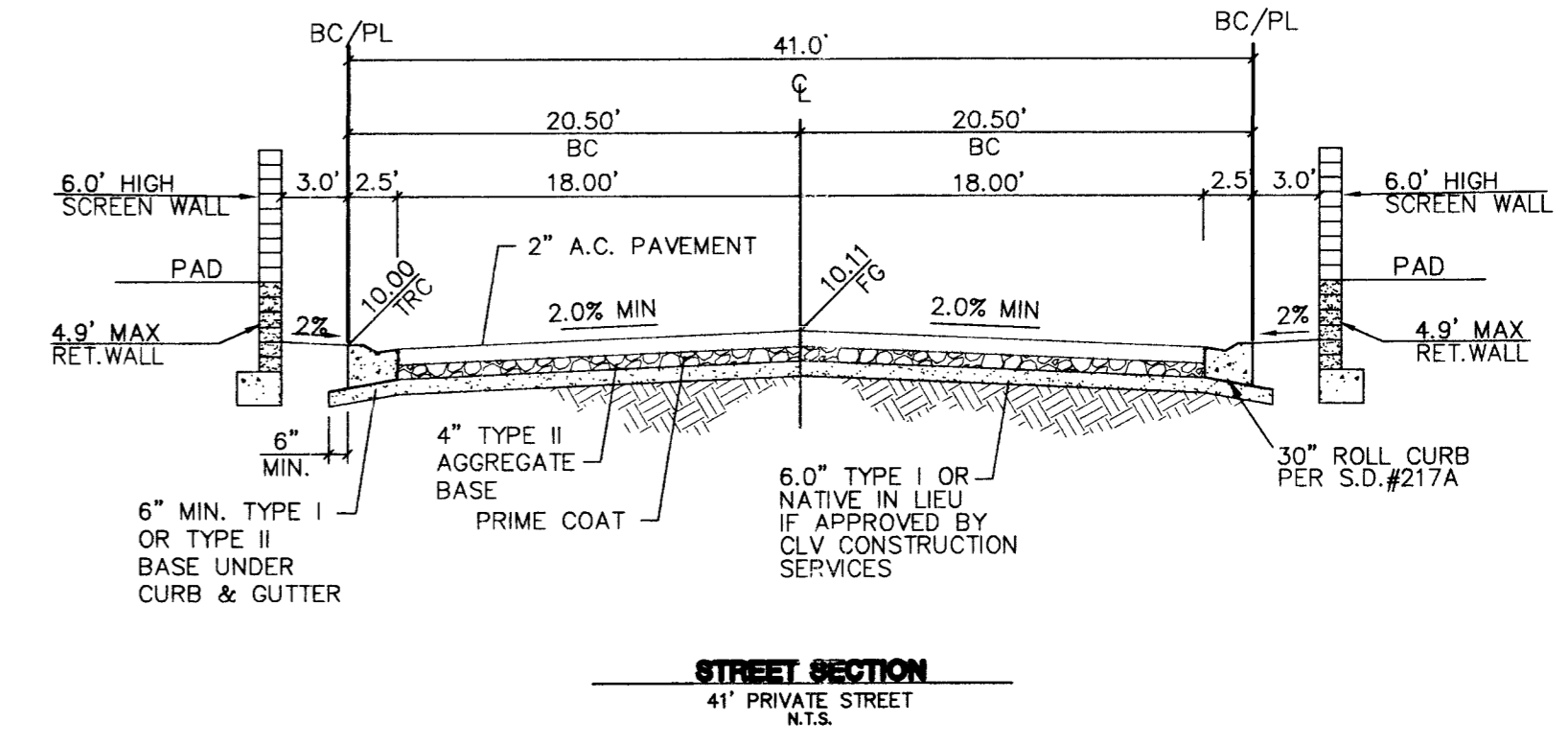
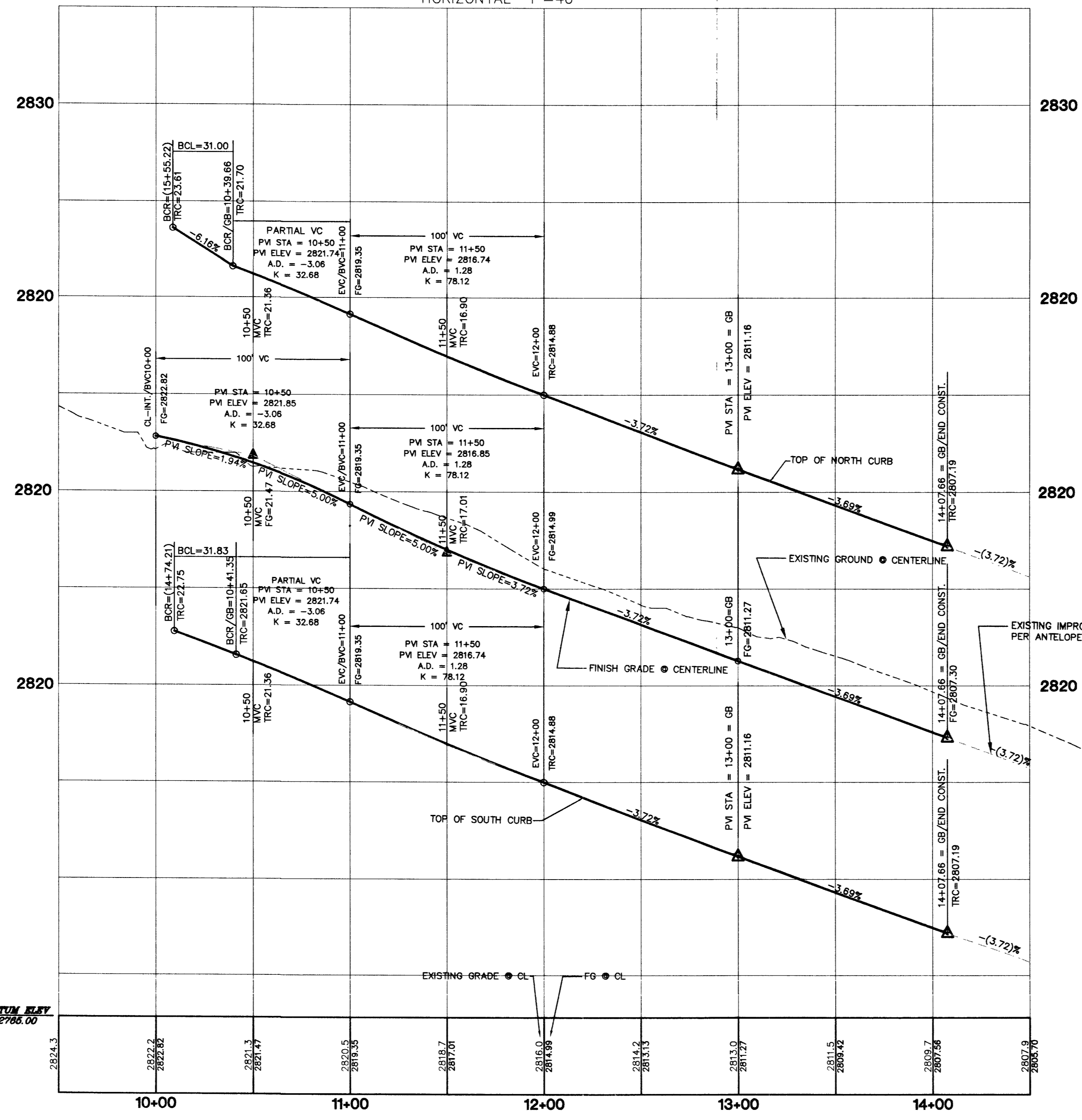
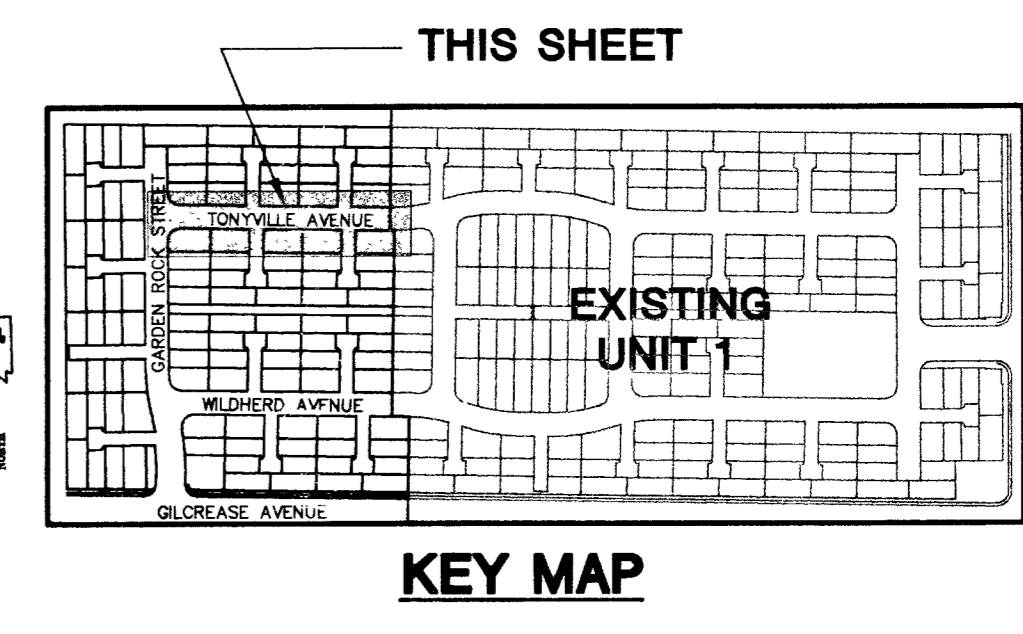
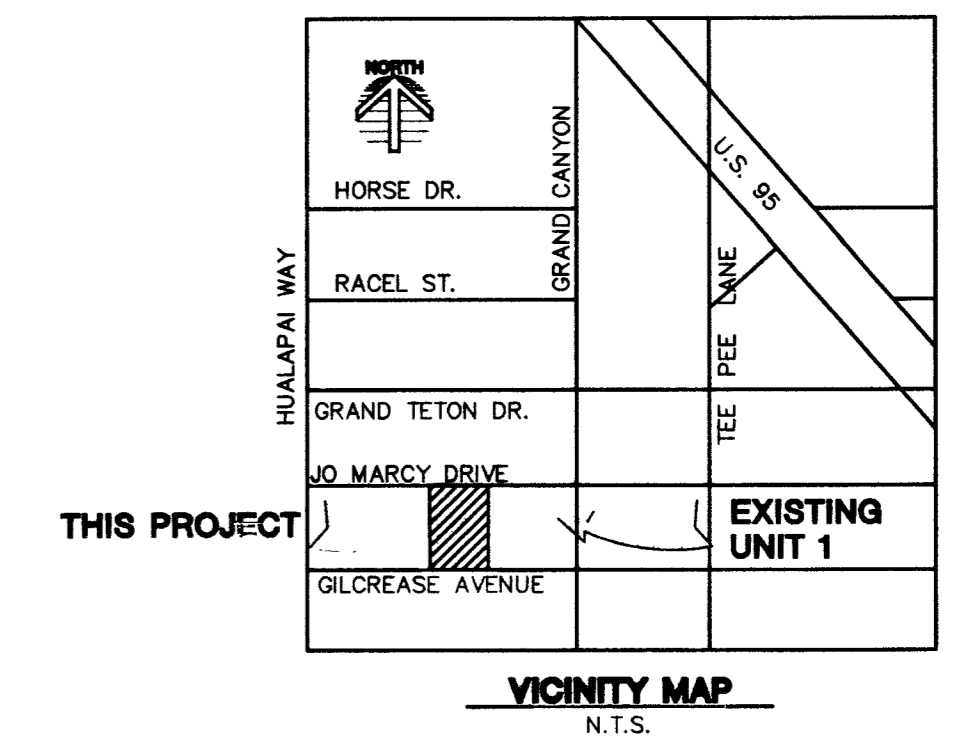
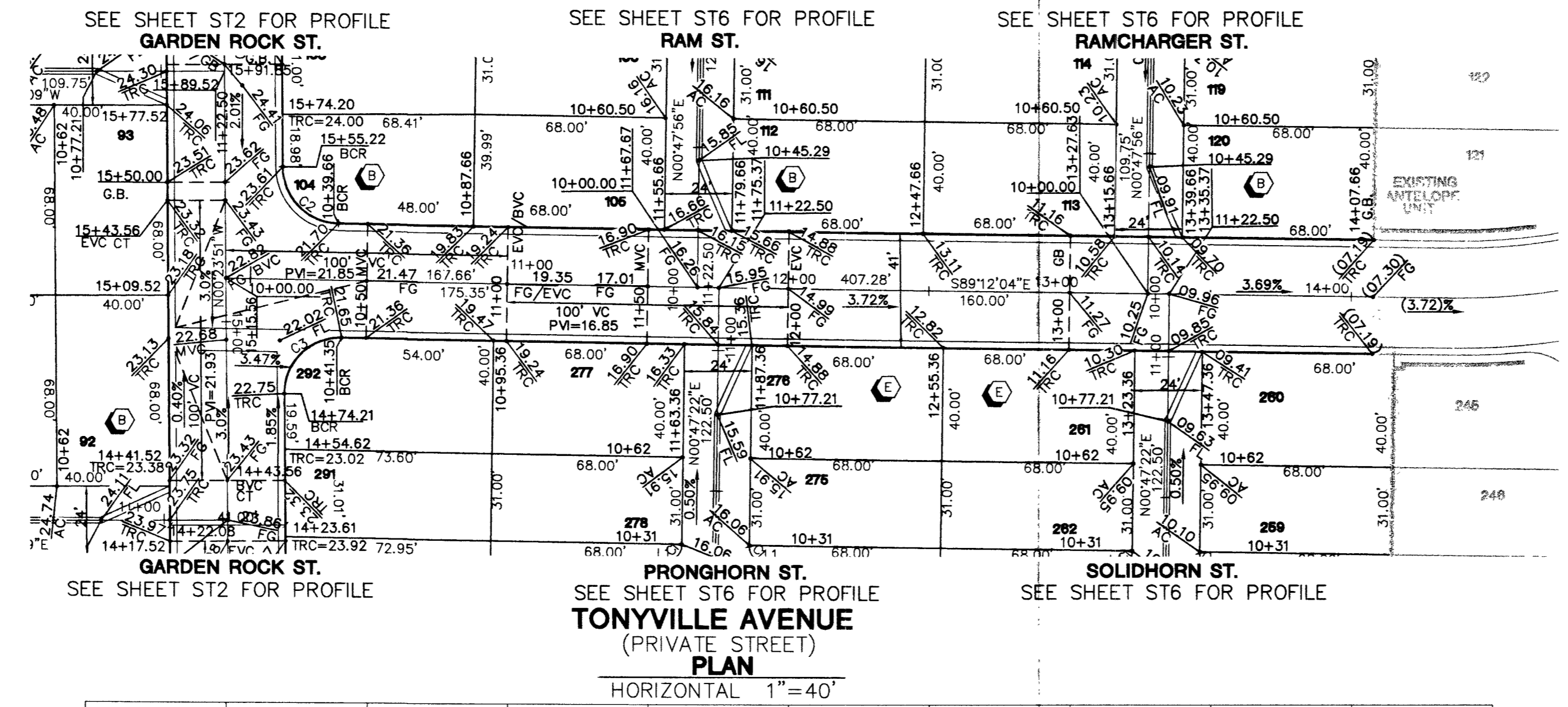


PROJECT BENCHMARK
 PROJECT DATUM: NORTH AMERICAN VERTICAL DATUM OF 1988 (NAVD88)
 CITY OF LAS VEGAS BENCHMARK: 0C9017N6
 ELEVATION: 799.0857 METERS (2,621.67 FEET)
 RIVET AND SQUARE ALUMINUM PLATE IN TOP CENTER OF HEADWALL ON THE WEST SIDE OF U.S. 95 NEAR MILE MARKER 90.15.

BASIS OF BEARING
 SOUTH 89°10'24" EAST - BEING THE SOUTH LINE OF THE NORTHWEST QUARTER (NW 1/4) OF THE NORTHEAST QUARTER (NE 1/4) OF SECTION 15, TOWNSHIP 19 SOUTH, RANGE 60 EAST, M.D.M., CLARK COUNTY, NEVADA AS SHOWN BY THAT RECORD OF SURVEY ON FILE IN THE OFFICE OF THE COUNTY RECORDER, CLARK COUNTY, NEVADA, IN FILE 114 OF SURVEYS, AT PAGE 57.

NOTE
 ALL STREETS ARE PRIVATE UNLESS OTHERWISE NOTED.
 ALL PRIVATE STREETS AND DRIVES ARE P.U.E., PUBLIC UTILITY EASEMENTS, AND PUBLIC DRAINAGE EASEMENTS TO BE PRIVATELY MAINTAINED BY HOA.



CURVE TABLE

CURVE	LENGTH	RADIUS	DELTA	TANGENT
C2	31.00'	20.00'	88°48'13"	19.59'
C3	31.83'	20.00'	91°11'47"	20.42'

PROFILE
 HORIZONTAL 1"=40'
 VERTICAL 1"=4'

Call before you Dig
 1-800-227-2600

Call before you OVERHEAD
 1-702-593-6111

GREYSTONE HOMES
 3785 E. SUNSET, #81
 LAS VEGAS, NEVADA 89120
 (702) 438-1700

CITY OF LAS VEGAS, NEVADA

STREET PLAN & PROFILE
TONYVILLE AVENUE

ANTELOPE UNIT 2

DRAWN BY: AB
 DESIGNED BY: AB
 CHECKED BY: CZ

AUG. 2003
 AUG. 2003
 AUG. 2003

PROJECT NO: 6.988-2
 SCALE: 1"=40' HORIZ. VERT. 1"=4'

EXPIRES 06-30-04

PROFESSIONAL ENGINEER STATE OF NEVADA
 AARON M. YAMACHIKA
 LICENSE NO. 16078

SHEET **ST3**
 12 OF 25 SHEETS
 DRAWING NO. 10714781-2

64071