

Call before you OVERHEAD 1-702-593-6111

Call before you Dig 1-800-227-2600

PROJECT BENCHMARK
 PROJECT DATUM: NORTH AMERICAN VERTICAL DATUM OF 1988 (NAVD88)
 CITY OF LAS VEGAS BENCHMARK: 0C0017N6
 ELEVATION: 799.0857 METERS (2,621.67 FEET)
 RIVET AND SQUARE ALUMINUM PLATE IN TOP CENTER OF HEADWALL ON THE WEST SIDE OF U.S. 95 NEAR MILE MARKER 90.15.

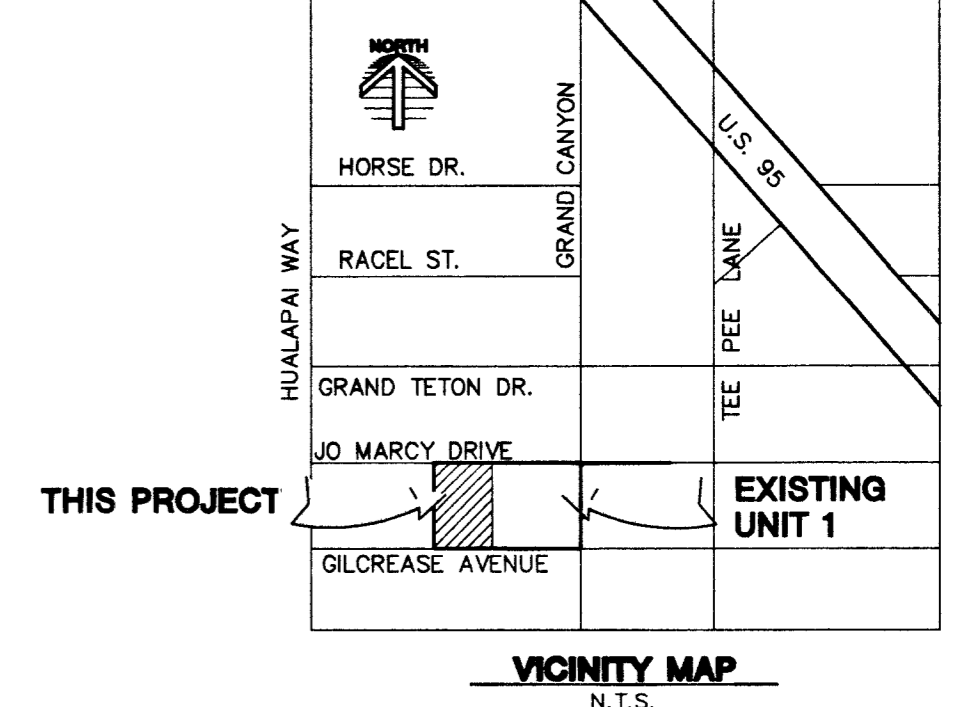
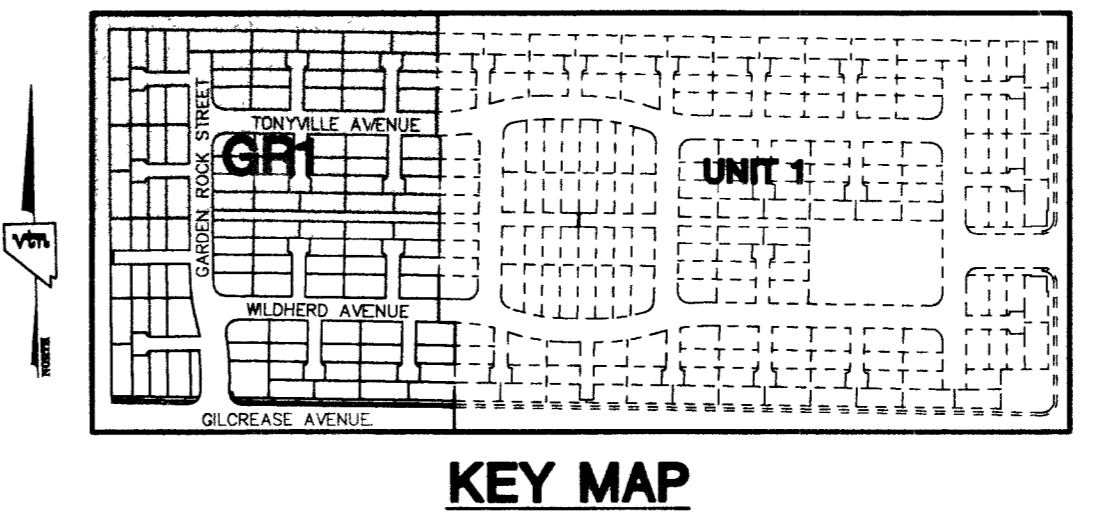
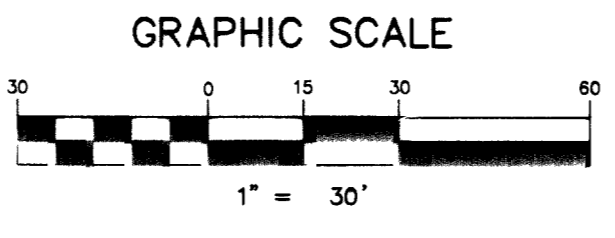
BASIS OF BEARING
 SOUTH 89°10'24" EAST - BEING THE SOUTH LINE OF THE NORTHWEST QUARTER (NW 1/4) OF THE NORTHEAST QUARTER (NE 1/4) OF SECTION 18, TOWNSHIP 19 SOUTH, RANGE 60 EAST, M.D.M., CLARK COUNTY, NEVADA AS SHOWN BY THAT RECORD OF SURVEY ON FILE IN THE OFFICE OF THE COUNTY RECORDER, CLARK COUNTY, NEVADA, IN FILE 114 OF SURVEYS, AT PAGE 57.

LINE TABLE

LINE	LENGTH	BEARING
L1	2.50	S00°23'51"E

CURVE TABLE

CURVE	LENGTH	RADIUS	DELTA	TANGENT
C1	7.85	5.00'	90°00'00"	5.00
C2	31.00	20.00'	88°48'13"	19.59
C3	31.63	20.00'	91°11'47"	20.42
C4	88.42	320.50'	15°48'22"	44.49
C5	20.77	279.50'	41°52'26"	10.39
C6	29.67	20.00'	85°00'03"	18.33
C7	35.60	20.00'	101°39'03"	24.69
C8	68.06	325.50'	11°58'03"	34.17
C9	31.42	20.00'	90°00'00"	20.00
C10	31.42	20.00'	90°00'00"	20.00
C11	37.72	274.50'	7°52'21"	18.89
C12	27.59	300.00'	5°16'10"	13.81
C13	38.64	300.00'	7°22'50"	19.35
C14	25.39	300.00'	4°50'59"	12.70
C15	37.37	300.00'	10°57'27"	28.77

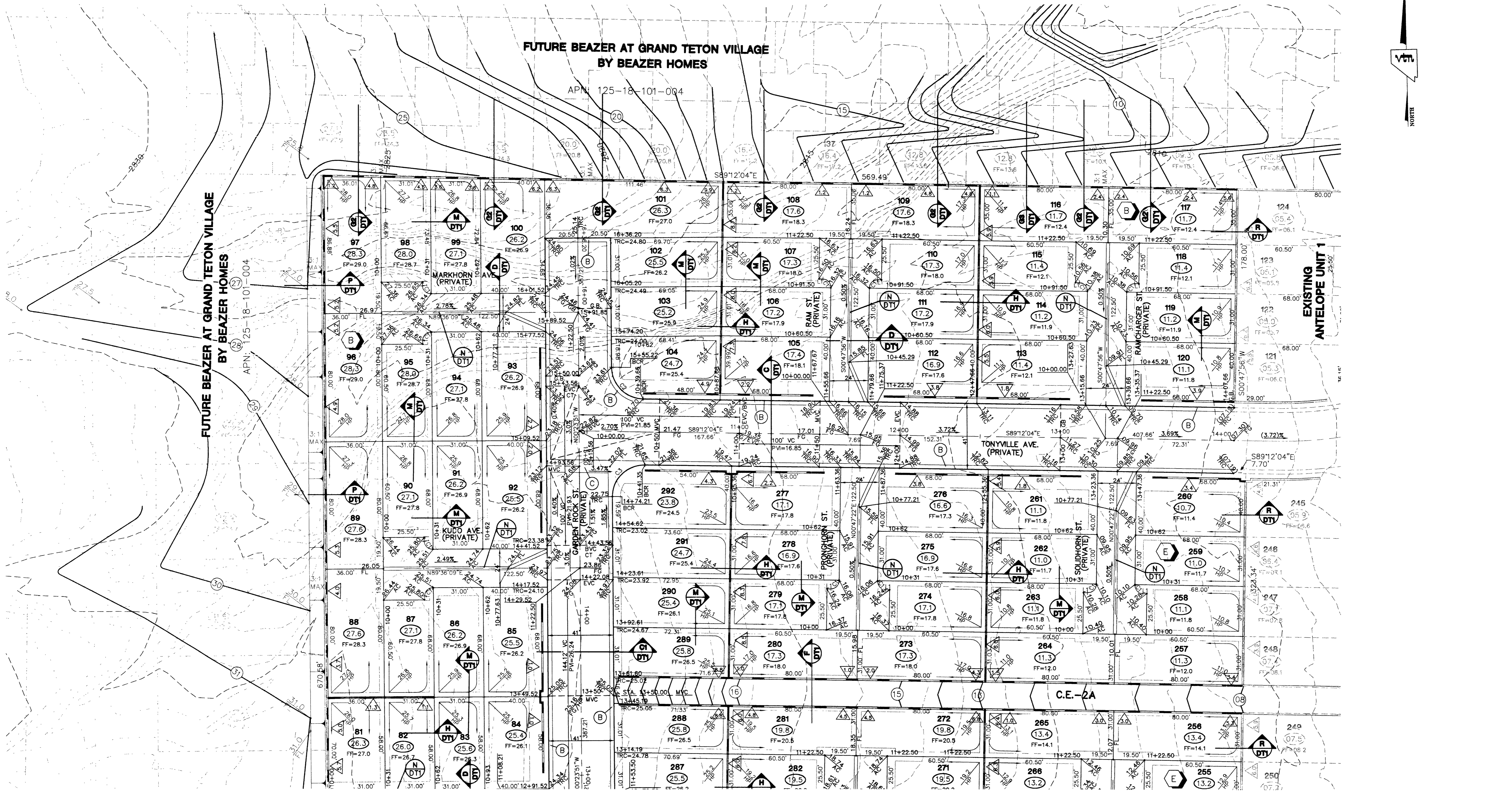


- CONSTRUCTION NOTES STREET IMPROVEMENTS**
- (A) CONSTRUCT "L" TYPE CURB & GUTTER PER STD. DWG. NO. 216
 - (B) CONSTRUCT 30" ROLL TYPE CURB PER STD. DWG. NO. 217A
 - (C) CONSTRUCT 8.0' WIDE CROSS GUTTER PER STD. DWG. NO. 228
 - (D) CONSTRUCT 5.0' WIDE SIDEWALK PER STD. DWG. NO. 234
 - (E) SIDEWALK RAMP (CASE 1) PER STD. DWG. NO. 235 (A & B PER TABLE)
 - (F) SIDEWALK UNDER DRAIN PER STD. DWG. NO. 236

NOTE:
 ALL STREETS ARE PRIVATE **DRIVES** UNLESS OTHERWISE NOTED.
 ALL PRIVATE STREETS AND DRIVES ARE P.U.E., PUBLIC SEWER EASEMENTS, AND PUBLIC DRAINAGE EASEMENTS TO BE PRIVATELY MAINTAINED BY HOA.

FOR ALL GRADING & STREET SECTIONS SEE SHEET # DT1

SEE SHEET GR2 FOR LEGEND



SEE SHEET GR2

AARON M. YAMACHKA, P.E. #15079
 DATE: 12/20/04

GREYSTONE HOMES	CITY OF LAS VEGAS, NEVADA
2727 SOUTH RANBOW BOULEVARD, LAS VEGAS, NEVADA 89146-5148	PH: (702) 873-7550 FAX (702) 362-2597
3765 E. SINSEL AVE. #810	nevada CONSULTING ENGINEERS • PLANNERS • LAND SURVEYORS
(702) 459-7700	
GRADING PLAN	ANTELOPE UNIT 2
DRAWN BY: AUG. 2003	DESIGNED BY: AUG. 2003
CHKD: TJK	CHKD BY: AUG. 2003
PROJECT NO: 6388-2	SCALE: 1"=30' HORIZ. N/A VERT.
EXPIRES 06-30-04	
PROFESSIONAL ENGINEER - STATE OF NEVADA	
AARON M. YAMACHKA	
CIVIL ENGINEER	
NO. 16079	
SHEET GR1	
7 OF 25 SHEETS	
DRAWING NO. 1074781-2	