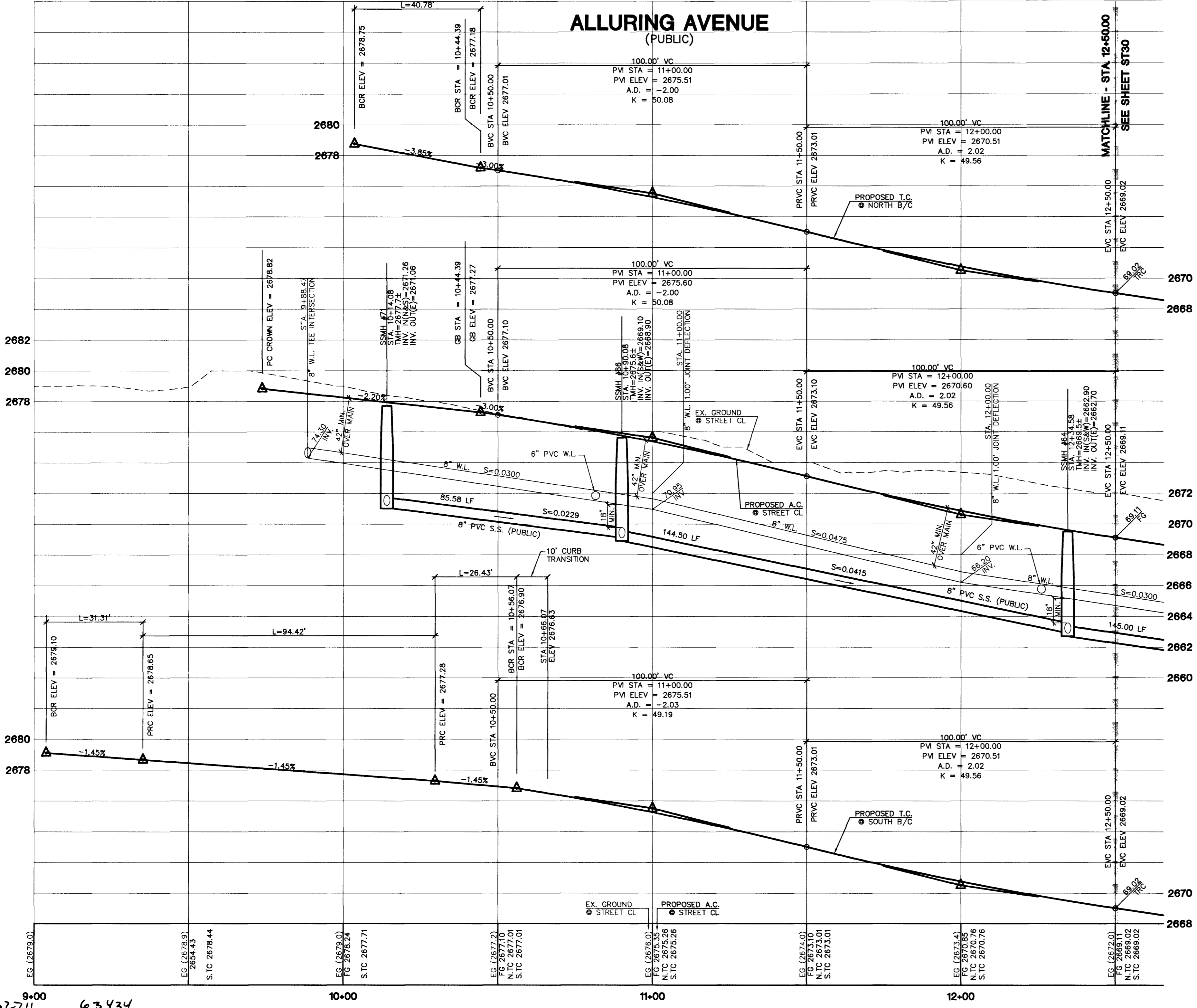


ALLURING AVENUE (PUBLIC)



NOTE
1. ALL PRIVATE DRIVES ARE P.U.E., PUBLIC SEWER EASEMENTS, AND PUBLIC DRAINAGE EASEMENTS TO BE PRIVATELY MAINTAINED BY HOMEOWNERS ASSOCIATION.

CONTRACTOR NOTE
CONTRACTOR SHALL VERIFY HORIZONTAL AND VERTICAL LOCATION OF EXISTING UTILITIES AND NOTIFY THE DESIGN ENGINEER IMMEDIATELY OF ANY DISCREPANCIES PRIOR TO CONSTRUCTION.

BENCHMARKS
PROJECT DATUM: NORTH AMERICAN VERTICAL DATUM OF 1988 (NAVD88)
CLARK COUNTY BENCHMARK: OC9017N6
ELEVATION: 799.0857 METERS (2621.67 FEET)
RIVET AND SQUARE ALUMINUM PLATE IN TOP CENTER OF HEADWALL ON THE WEST SIDE OF U.S. 95 NEAR MILE MARKER 90.15.

BASIS OF BEARINGS
THE BASIS OF BEARINGS FOR THIS PROJECT IS GRID NORTH AS DEFINED BY THE NEVADA COORDINATE SYSTEM OF 1983 (NCS83), EAST ZONE (2701), DETERMINED BY CLARK COUNTY GIS CONTROL POINTS 802, 803, 804, AND 805, AS SHOWN ON A RECORD OF SURVEY ON FILE IN THE CLARK COUNTY, NEVADA, RECORDER'S OFFICE, IN BOOK 88 OF SURVEYS, AT PAGE 53.

- CONSTRUCTION NOTES**
- (A) CONSTRUCT 24" "L" TYPE CURB & GUTTER PER STD. DWG. NO. 216
 - (B) CONSTRUCT 30" "ROLL" TYPE CURB & GUTTER PER STD. DWG. NO. 217A
 - (E) CONSTRUCT CONCRETE SIDEWALK PER STD. DWG. NO. 234
 - (F) CONSTRUCT SIDEWALK RAMP (CASE I) PER STD. DWG. NO. 235
 - (G) CONSTRUCT 2" WIDE UNDER SIDEWALK DRAIN PER STD. DWG. NO. 236
 - (H) CONSTRUCT 24" DEPRESSED CURB SECTION PER DETAIL "KK" ON SHEET DT1

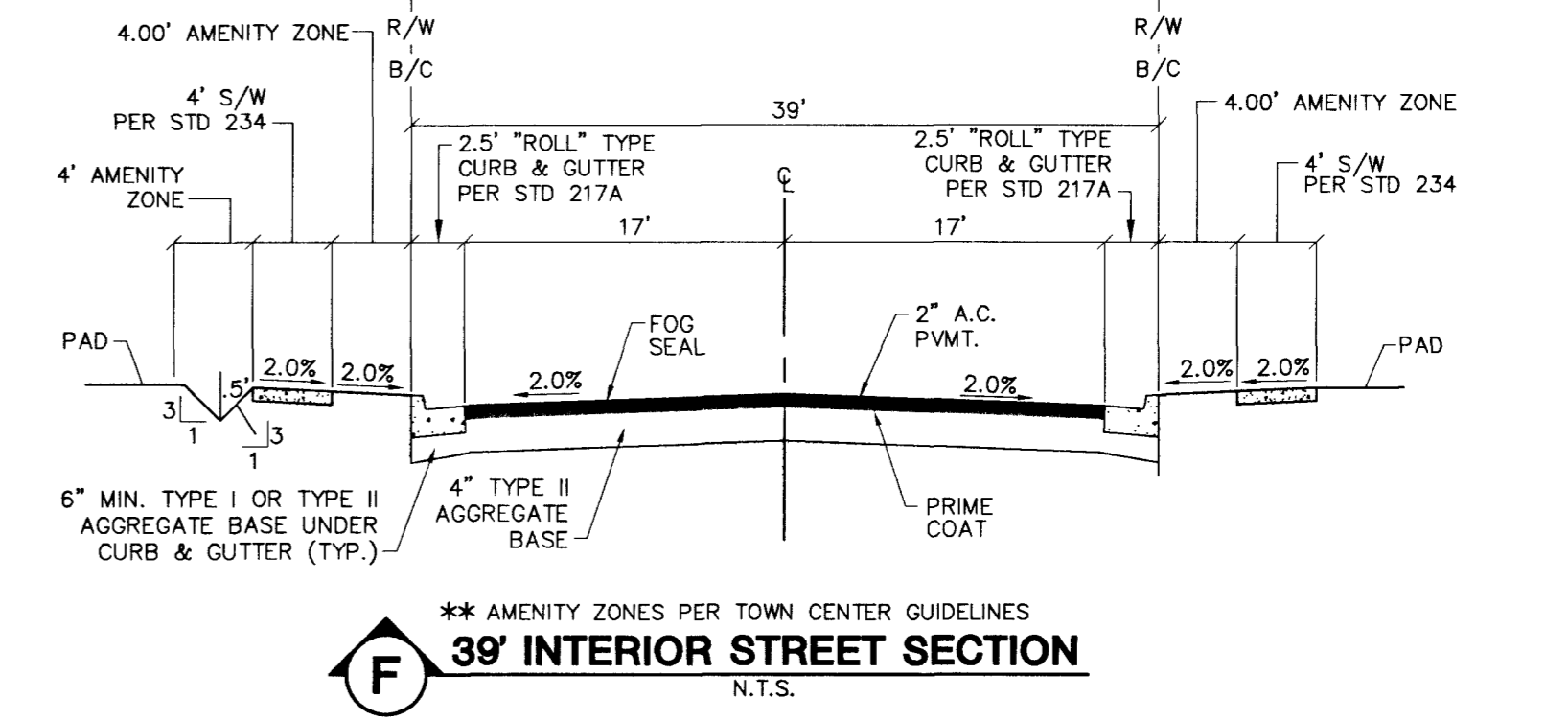
CURVE DATA TABLE

CURVE	RADIUS	LENGTH	TANGENT	DELTA
C141	26.00	37.65	22.99	82°58'42"
C142	26.00	3.13	1.56	6°53'13"
C143	100.00	24.08	12.10	13°47'53"
C144	100.00	7.23	3.61	4°08'25"
C145	44.00	36.94	20.85	50°42'03"
C146	44.00	17.37	8.80	22°36'46"
C147	44.00	14.23	7.18	18°32'03"
C148	44.00	10.49	5.27	13°39'30"
C149	100.00	26.43	13.29	15°08'34"

SCALE
1"=20' HORIZ.
1"=4' VERT.

WHEELCHAIR RAMP DATA

NO.	"A"	"B"
[7]	12.0'	4.5'



APPROVAL:
[Signature] 1/22/04
LAS VEGAS VALLEY WATER DISTRICT
PROJECT #27881

Call before you Dig
1-800-227-2600

Call before you Overhead
1-702-593-6111

THE ASTORIA CORPORATION
CITY OF LAS VEGAS

STREET & SEWER PLAN AND PROFILE
ALLURING AVENUE

ASTORIA AT TOWN CENTER - SOUTH

DRAWN BY: 487/TP DEC. 2003
DESIGNED BY: ddb DEC. 2003
CHECKED BY: CRG DEC. 2003

PROJECT NO: 5895
SCALE: 1"=20' HORIZ.
1"=4' VERT.

PROFESSIONAL ENGINEER - STATE OF NEVADA
No. 12164
EXPIRES 06-30-05

SHEET **ST29** OF 93 SHEETS
DRAWING NO. 1074H794