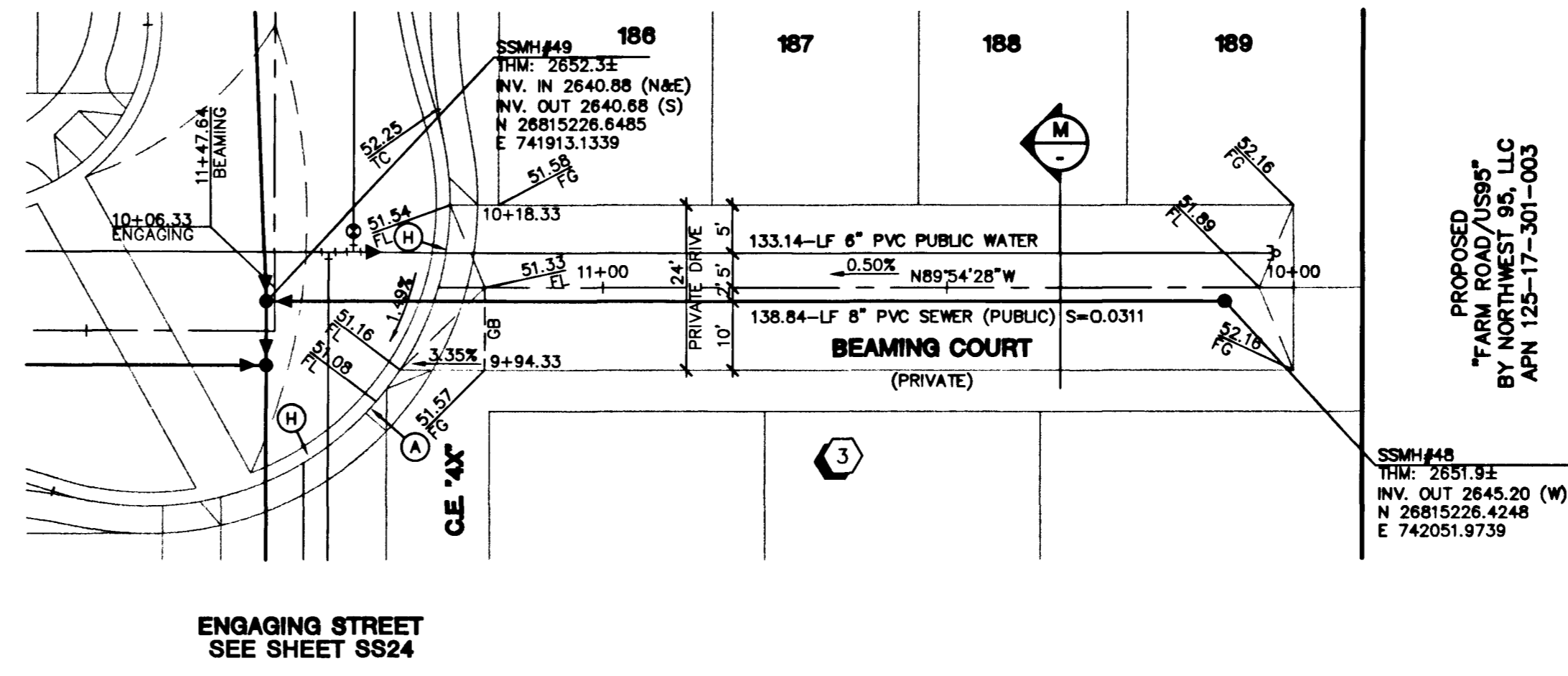
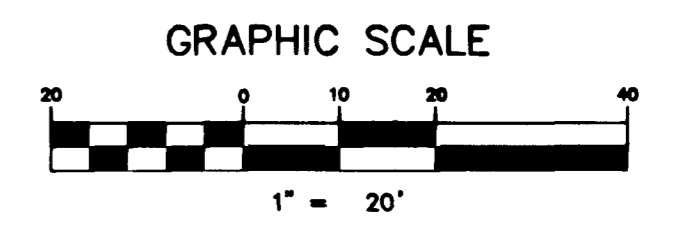
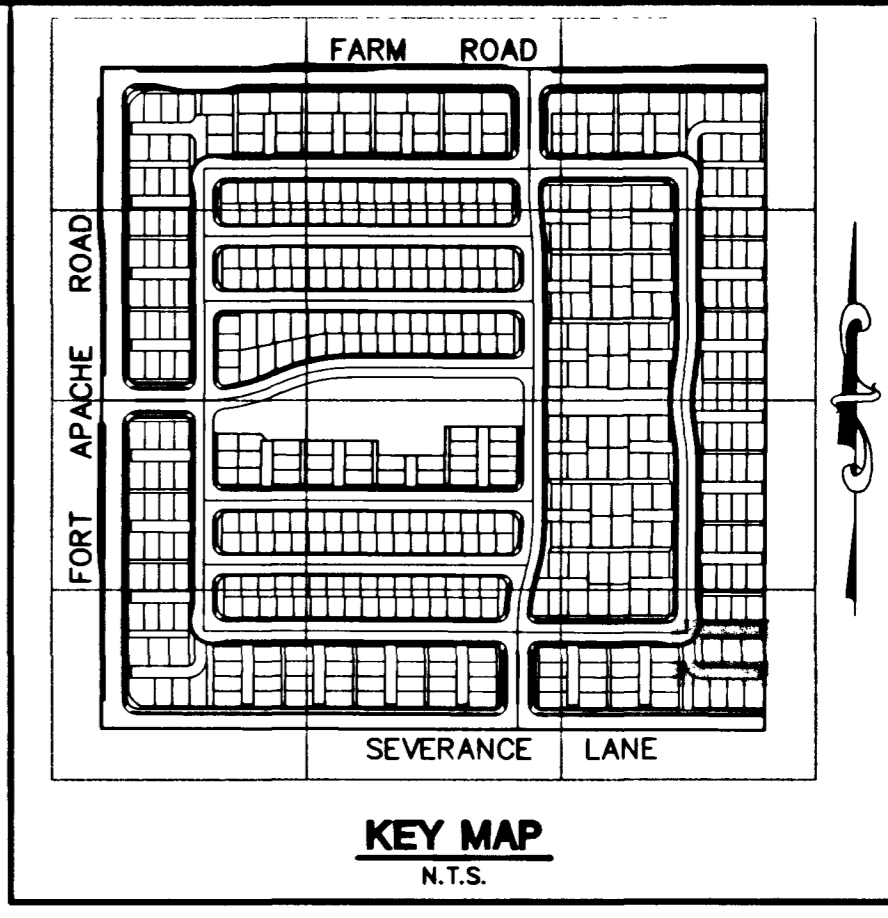


BECOMING COURT
(PRIVATE DRIVE)



BEAMING COURT
(PRIVATE DRIVE)



CONTRACTOR NOTE
CONTRACTOR SHALL VERIFY HORIZONTAL AND VERTICAL LOCATION OF EXISTING UTILITIES AND NOTIFY THE DESIGN ENGINEER IMMEDIATELY OF ANY DISCREPANCIES PRIOR TO CONSTRUCTION.

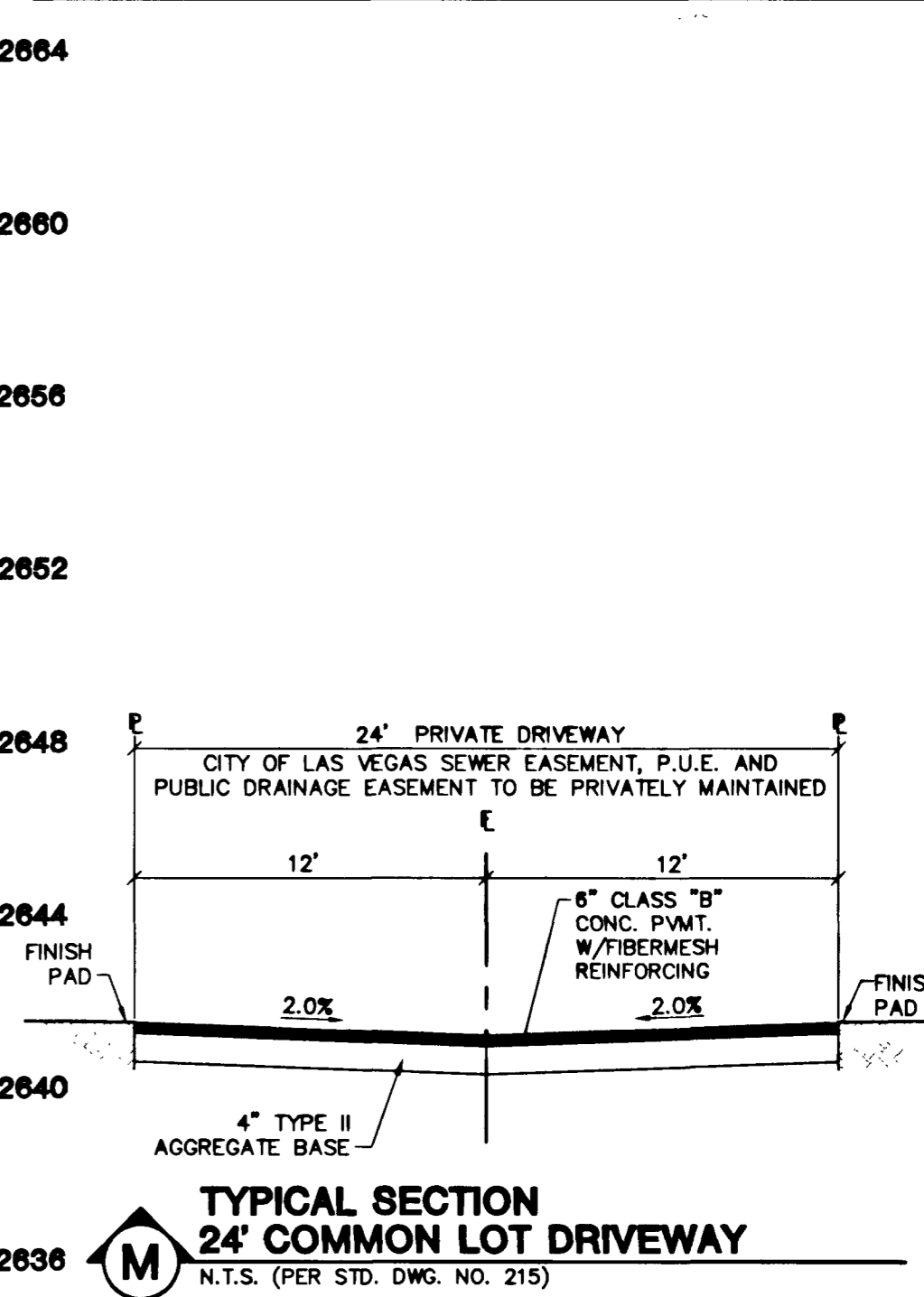
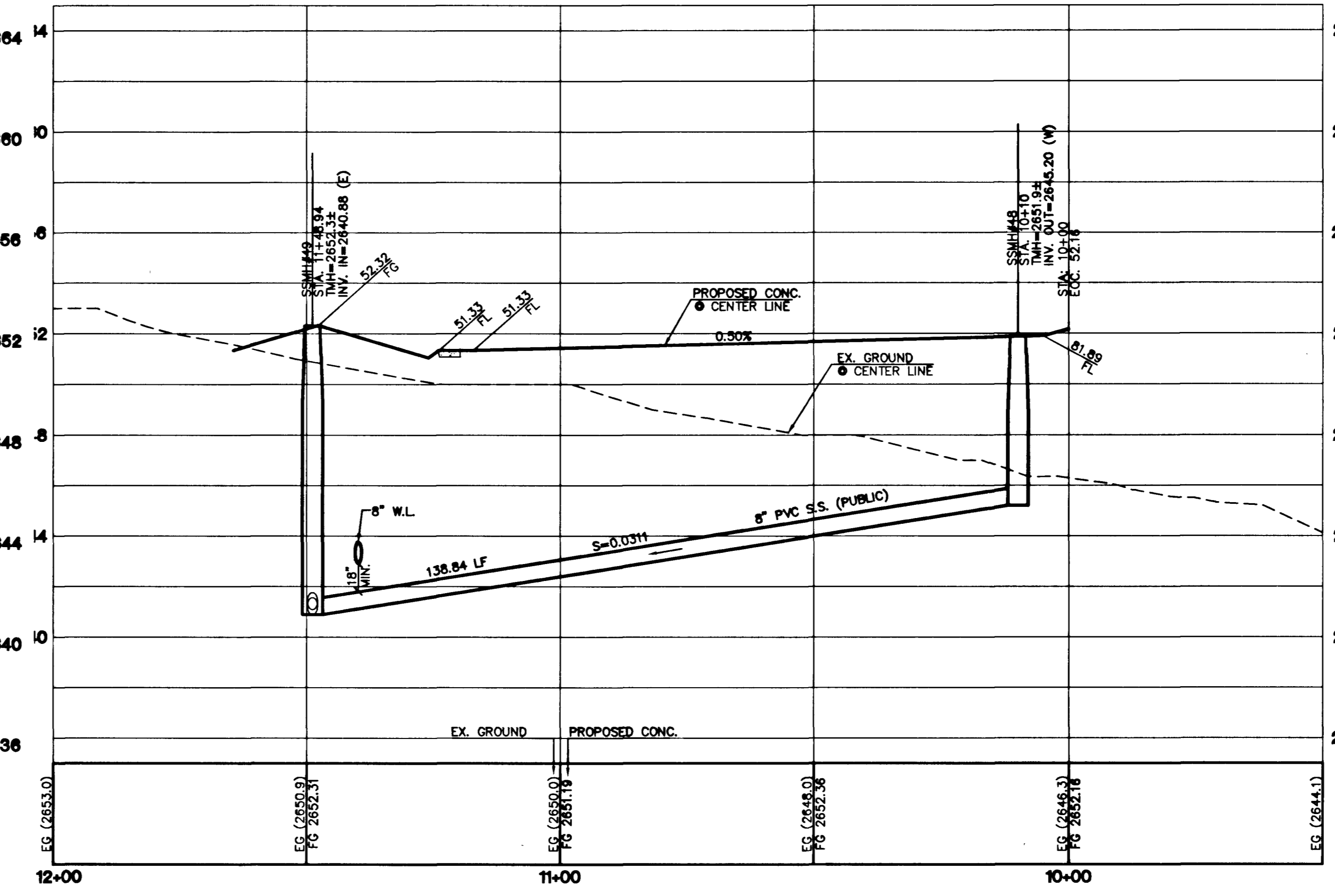
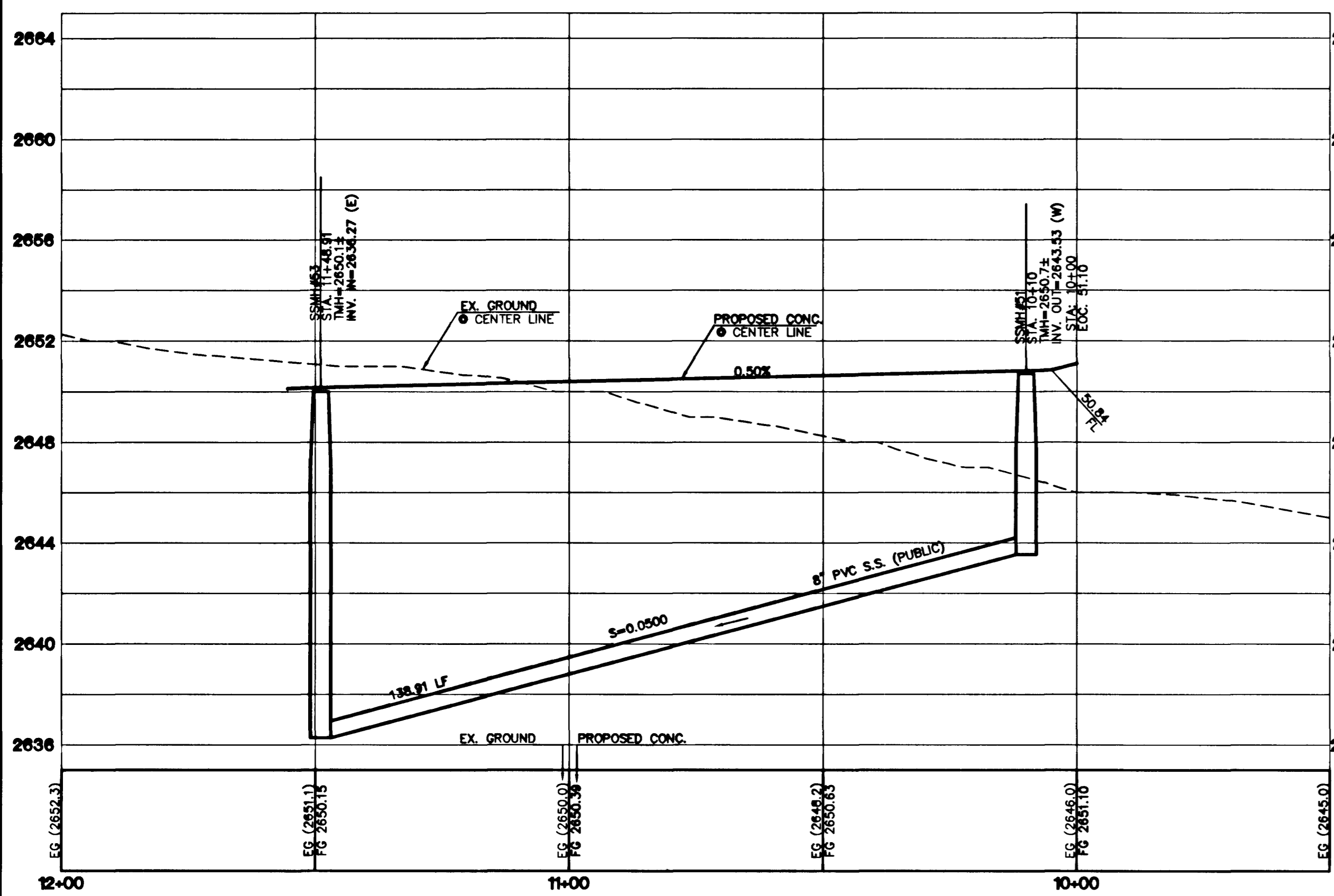
BENCHMARKS
PROJECT DATUM : NORTH AMERICAN VERTICAL DATUM OF 1988 (NAVD88)
CLARK COUNTY BENCHMARK : 0C9017N6
ELEVATION : 799.0857 METERS (2621.67 FEET)
RIVET AND SQUARE ALUMINUM PLATE IN TOP CENTER OF HEADWALL ON THE WEST SIDE OF U.S. 95 NEAR MILE MARKER 90.15.

BASIS OF BEARINGS
THE BASIS OF BEARINGS FOR THIS PROJECT IS GRID NORTH AS DEFINED BY THE NEVADA COORDINATE SYSTEM OF 1983 (NCS83), EAST ZONE (2701), DETERMINED BY CLARK COUNTY GIS CONTROL POINTS 802, 803, 804 AND 805, AS SHOWN ON A RECORD OF SURVEY ON FILE IN THE CLARK COUNTY, NEVADA, RECORDER'S OFFICE, IN BOOK 88 OF SURVEYS, AT PAGE 53.

NOTE
1. ALL PRIVATE DRIVES ARE P.U.E., PUBLIC SEWER EASEMENTS, AND PUBLIC DRAINAGE EASEMENTS TO BE PRIVATELY MAINTAINED BY HOMEOWNERS ASSOCIATION.

SCALE
1"=20' HORIZ.
1"=4' VERT.

CONSTRUCTION NOTES
(A) CONSTRUCT 24" "L" TYPE CURB & GUTTER PER STD. DWG. NO. 216
(B) CONSTRUCT 24" DEPRESSED CURB SECTION PER DETAIL "K" ON SHEET DT1



Call before you Dig
1-800-227-2600

Call before you Overhead
1-702-593-6111

THE ASTORIA CORPORATION
CITY OF LAS VEGAS
2727 SOUTH RAINBOW BOULEVARD LAS VEGAS, NEVADA 89146-5146
PH. (702) 873-7500 FAX (702) 362-2397
9350 DEL WEB BOULEVARD LAS VEGAS, NEVADA 89154
(702) 257-1188

ASTORIA AT SOUTH TOWN CENTER - SOUTH

PRIVATE DRIVE AND SEWER PLAN AND PROFILE BECOMING COURT AND BEAMING COURT

ASTORIA AT SOUTH TOWN CENTER - SOUTH

DRAWN BY: 592/P
DESIGNED BY: ab
CHECKED BY: SNG
PROJECT NO: 5985

DEC. 2003
DEC. 2003
DEC. 2003

SCALE: 1"=20' HORIZ.
1"=4' VERT.

EXPIRES 05-30-05

SHEET **SS8**
75 OF 93 SHEETS
DRAWING NO. 10744794

62724