

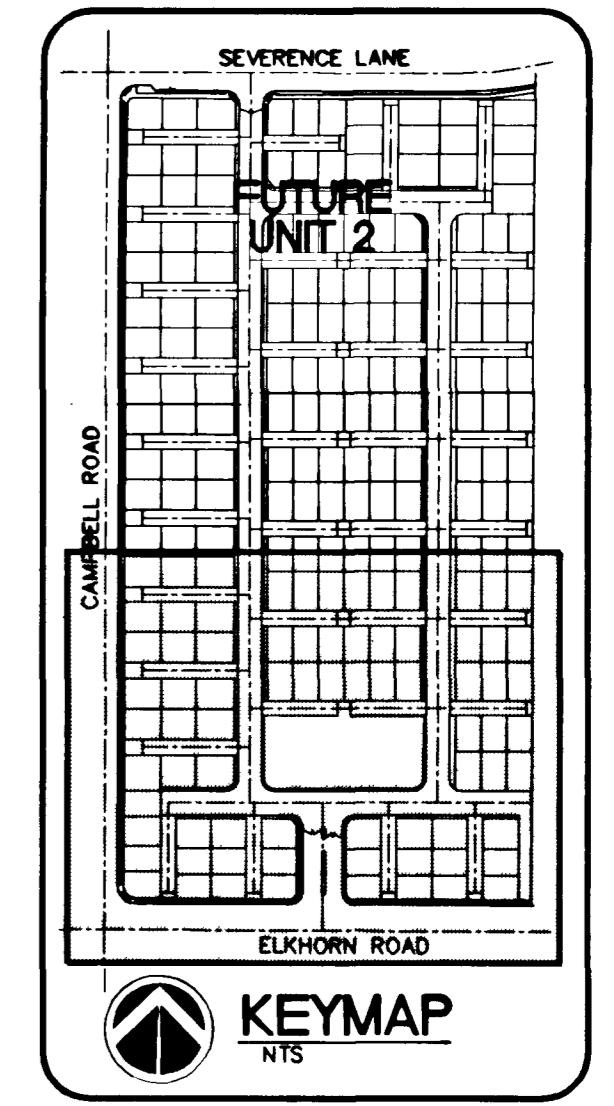
All Sewer/Storm Drains crossing water lines must conform to Section 2.19 of the Uniform Design and Construction Standards for Potable Water Systems (UDACS) for water and storm main crossings and clearances.

NOTE: LOTS 95, 100, 143-171

THIS PROPERTY MAY HAVE STATIC WATER PRESSURE IN EXCESS OF 80 PSI. THE UNIFORM PLUMBING CODE REQUIRES THAT INDIVIDUAL ON-SITE (PRIVATE), PRESSURE REDUCING VALVES BE INSTALLED WHENEVER THE PRESSURE EXCEEDS 80 PSI. PRIVATE ARE THE DEVELOPER'S RESPONSIBILITY AND WILL NOT BE INSPECTED OR INCLUDED IN THE ACCEPTANCE OF L.V.V.W.D. FACILITIES.

CONSTRUCTION NOTES

- INSTALL CAP & 2" BLOW OFF ASSY. PER UDACS PLATE #A
- INSTALL 8" GATE VALVE PER UDACS PLATE B
- INSTALL 8" X 8" TEE PER UDACS PLATE 5
- INSTALL 8" X 6" TEE PER UDACS PLATE 5
- INSTALL 8" X 1 1/4" BEND PER UDACS PLATE 5
- INSTALL 1" TYPE "K" COPPER SERVICE W/ 5/8" METER PER UDACS PL 1B
- INSTALL 1" TYPE "K" COPPER SERVICE W/ 3/4" METER PER UDACS PL 1D
- INSTALL 1" RPPA PER UDACS PLATE 11A
- INSTALL 8" X 6" REDUCER
- INSTALL 8" 90° BEND PER UDACS PLATE 5
- INSTALL 8" CROSS PER UDACS PLATE 5
- INSTALL STD. FIRE HYD. W/ ASSY. PER UDACS PLATE 7
- INSTALL 4" SEWER LATERAL
- NOT USED
- INSTALL 8" 45° BEND PER UDACS PLATE 5
- INSTALL 12" X 8" TEE PER UDACS PLATE 5
- INSTALL 12" GATE VALVE PER UDACS PLATE B
- REMOVE B.O. & CAP AND CONNECT PER UDACS PL #4A
- INSTALL 12" 90° BEND PER UDACS PLATE 5
- INSTALL 12" X 8" REDUCER
- CITY OF LAS VEGAS SEWER ESMT., P.U.E., PUBLIC DRAINAGE ESMT. TO BE PRIVATELY MAINTAINED
- INSTALL 1" TYPE "K" COPPER SERVICE W/ 3/4" METER PER UDACS PL 1B
- INSTALL 5" FITTING "SPECIFIED FITTING" RESTRAINED BOTH ENDS

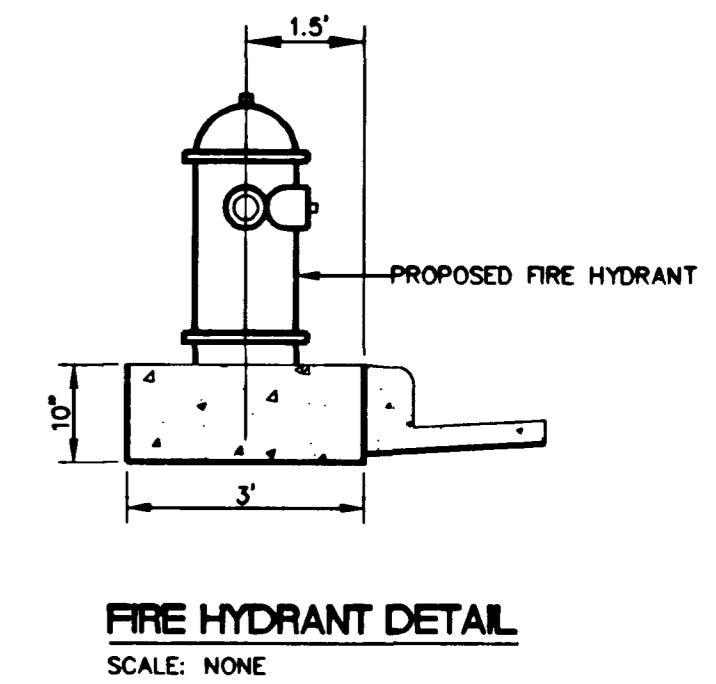


SEWER MANHOLE TABLE

MH NO.	RM ELEV	INV. IN	INV. OUT	STATION	NORTHING	EASTING
SSMH 1	2616.72	2607.65	(2607.12)	43+40.03 5.1'R	813651.1958	742727.3360
SSMH 2	2617.04	2610.20	2610.00	15+60.35 5'L	813864.7784	742728.0557
SSMH 2A	2618.94	2612.10	2611.90	14+76.22 5'L	813864.7801	742643.9270
SSMH 3	2620.42	2613.60	2613.40	14+15.84 5'L	813864.7814	742583.5422
SSMH 4	2622.84	2616.00	2615.80	13+40.22 5'L	813864.7830	742507.9270
SSMH 5	2629.14	2621.85	2621.65	11+29.00 5'L	813864.7874	742296.7057
SSMH 6	2632.84	2626.00	2625.80	10+05.00 5'L	813864.7900	742172.7057
SSMH 7	2621.74	2614.90	2614.70	11+52.89 6'L	814012.6933	742584.0402
SSMH 8	2630.24	2622.40	2622.20	10+92.42	813952.2079	742295.1939
SSMH 9	2630.54	2622.84	2622.64	11+52.88	814012.6654	742295.1951
SSMH 10	2622.54	2615.70	2615.50	12+92.90 6'L	814152.6967	742584.5116
SSMH 11	2630.94	2623.27	2623.07	12+11.42	814071.2079	742295.1964
SSMH 12	2631.44	2623.80	2623.60	12+92.89	814152.6755	742295.1980
SSMH 13	2623.34	2616.50	2616.30	14+32.90 6'L	814292.7000	742584.9830
SSMH 14	2631.64	2624.15	2623.95	13+30.42	814190.2079	742295.1988
SSMH 15	2632.24	2624.79	2624.59	14+32.90	814292.6857	742295.2010
SSMH 16	2624.24	2617.40	2617.20	15+72.91 6'L	814432.7033	742585.4544
SSMH 17	2632.34	2625.06	2624.86	14+49.42	814309.2079	742295.2013
SSMH 18	2633.04	2625.75	2625.55	15+72.91	814432.6958	742295.2039
SSMH 19	2624.94	-	2618.21	14+24.92 5'L	814432.7067	742720.0716
SSMH 20	2637.34	-	2630.30	11+58.50 9.5'R	814432.6991	742136.6540
SSMH 21	2624.04	-	2617.31	14+24.45 5'L	814292.7072	742719.6002
SSMH 22	2636.64	-	2629.60	11+58.50 5'R	814309.2112	742136.6514
SSMH 23	2623.24	-	2616.51	14+23.98 5'L	814152.7072	742719.1288
SSMH 24	2635.94	-	2628.90	11+58.50 5'R	814190.2112	742136.6489
SSMH 25	2622.34	-	2615.71	14+23.51 5'L	814012.7072	742718.6574
SSMH 26	2635.24	-	2628.20	11+58.50 5'R	814071.2112	742136.6464
SSMH 27	2634.54	-	2627.50	11+58.50 5'R	813952.2112	742136.6439
SSMH 28	2633.74	-	2626.81	11+30.72 5'L	813729.0660	742172.7028
SSMH 29	2629.54	-	2622.66	11+30.72 5'R	813729.0634	742296.7028
SSMH 30	2623.44	-	2616.81	11+30.72 5'R	813729.0590	742507.9242
SSMH 31	2619.64	-	2313.20	11+30.72 5'R	813729.0561	742643.9242

NOTES:

A. ALL PRIVATE STREETS/DRIVES ARE PUBLIC DRAINAGE EASEMENTS, CLV SEWER & PUE EASEMENTS TO BE PRIVATELY MAINTAINED BY THE HOMEOWNERS ASSOCIATION.
 B. CLV SEWER EASEMENT PUBLIC DRAINAGE EASEMENT TO BE PRIVATELY MAINTAINED.
 * DENOTES UNITS THAT REQUIRE FIRE SPRINKLERS AND 3/4" MVR 30 WATER METER
 NOTE: FOR ALL METERS INSTALL ARMORCAST 1" METER BOXES MODEL A6000485 L10 MODEL A6000184R

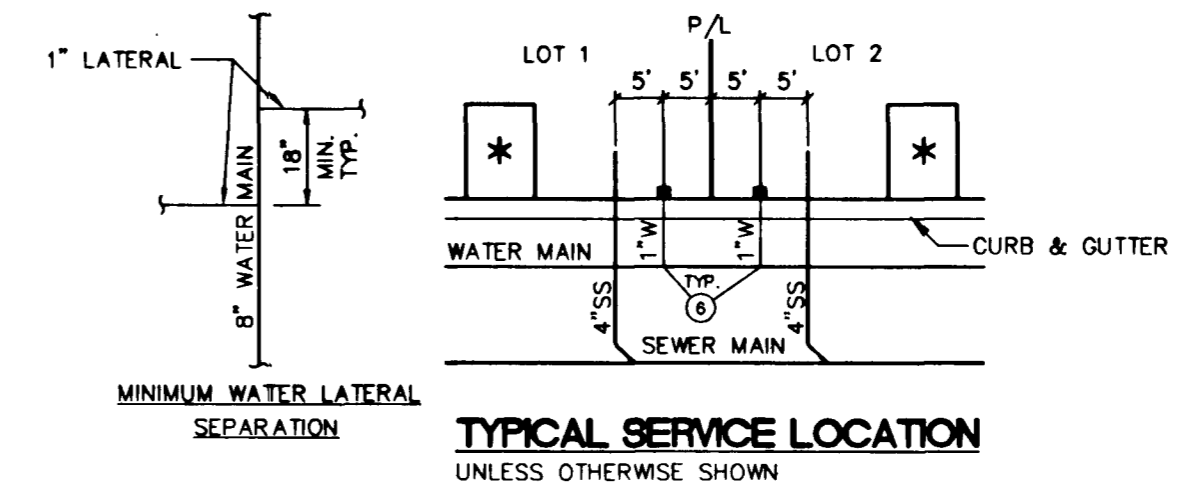


Water Main Joint Deflection (PVC 4" - 24")

PC Pipe shall be deflected at the joint only. The maximum allowable deflection shall be one (1) degree per joint with the minimum radius of curvature of 1,150 feet, per UDACS 2.06.01 and 2.06.02.

For changes exceeding the maximum allowable joint deflection, fittings shall be used.

Install pipeline marker ball in trench above each horizontal elbow fitting, per UDACS Plate No. 27.



BASIS OF BEARINGS

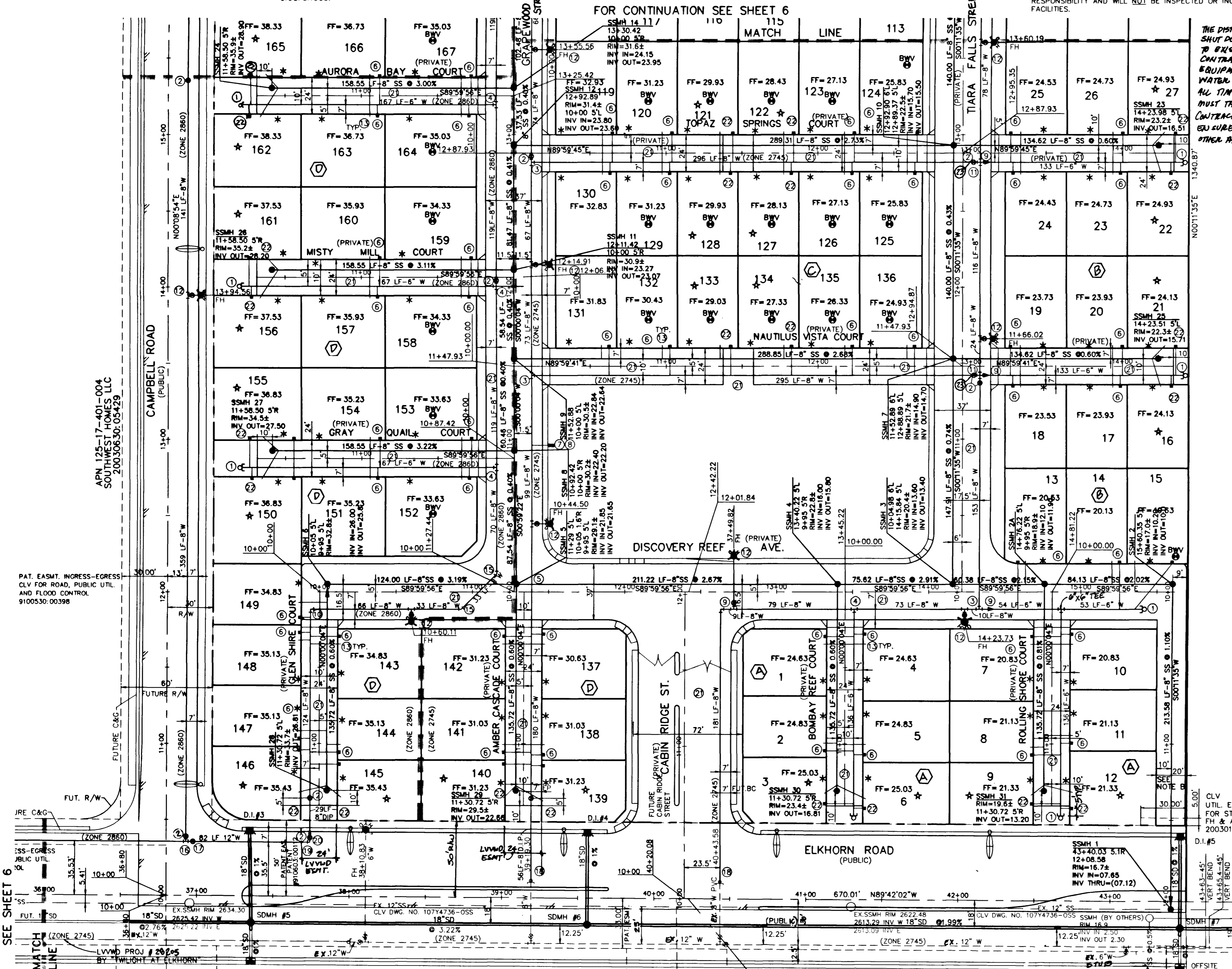
NORTH 000°43'WEST BEING THE WEST LINE OF THE SOUTHWEST QUARTER (SW 1/4) OF THE NORTHWEST QUARTER (NW 1/4) OF SECTION 19, TOWNSHIP 19 SOUTH, RANGE 60 EAST, M.D.M., CITY OF LAS VEGAS, CLARK COUNTY, NEVADA, AS SHOWN BY MAP IN THE OFFICE OF THE CLARK COUNTY, NEVADA RECORDER IN FILE 114 OF SURVEYS PAGE 57.

BENCHMARK

CITY OF LAS VEGAS VERTICAL CONTROL RIVET AND PLATE IN TOP OF CONCRETE CYLINDER NORTH OF ELKHORN & CAMPBELL
 STATION 8LV90
 1755MS
 ELEVATION = 802.7625 METERS (NAV88S)
 2633.73 FEET

APPROVALS

DATE: 9/25/03
 SCALE: 1"=40'
 CADFILE: cp1mup
 SHEET 5 OF 19 SHEETS
 CLV DWG NO: 10774736-055
 10774736-055



COORDINATION NOTE
 CONTRACTOR TO COORDINATE IMPROVEMENTS ON SOUTH SIDE OF ELKHORN WITH TWILIGHT AT ELKHORN RANCH

FIRE FLOW DATA

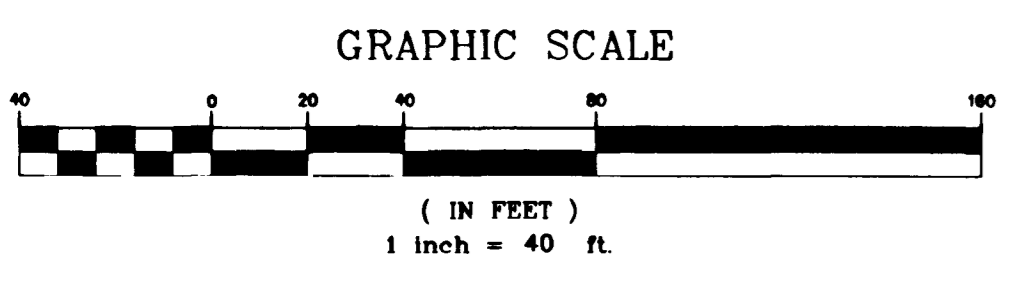
FIRE FLOW REQUIREMENT IS 1,500 GALLONS PER MINUTE AT 20 psi RESIDUAL PRESSURE.

BASED ON:
 SQUARE FOOTAGE: 3,600 SQ. FT.
 LARGEST AREA BETWEEN 4-HOUR AREA SEPARATION WALLS: N/A
 BUILDING HEIGHT: 28'
 NUMBER OF STORIES: 2
 TYPE OF CONSTRUCTION: V-N
 OCCUPANCY: R-3
 FULL AUTOMATIC FIRE SPRINKLER SYSTEM: SEE PLAN FOR BLDGS W/ SPRINKLERED
 REVIEWED BY:
 DATE:

PROJECT NAME: Centennial Park Unit 1
 DATE: 11/18/03
 L.V.V.W.D. DATE: ESN 052

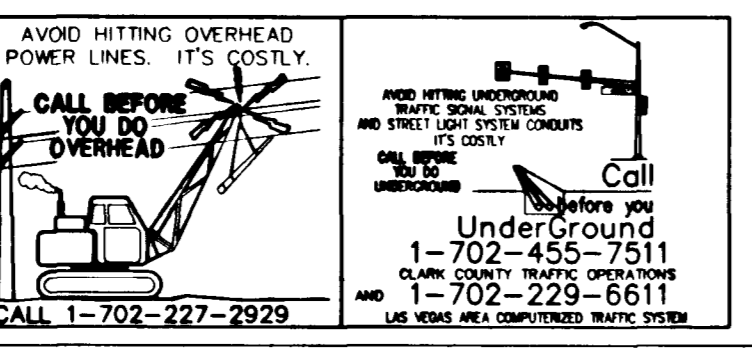
REDUCED PRESSURE PRINCIPLE ASSEMBLY (1) T

Approved Reduced Pressure Principle Assembly(s) shall be installed per the UDACS Plate No. 11A. No water shall be taken from a service requiring backflow prevention until the reduced pressure principle assembly has been successfully tested by the LVVWD.
 Any block wall or other fence material shall be designed and constructed around the outside of the easement(s) to allow the District direct access from the adjacent right-of-way.
 Install pipeline marker balls in trench above each horizontal elbow fitting, per UDACS Plate No. 27.



NOTICE TO CONTRACTOR!
 EXISTING UTILITY LOCATIONS SHOWN HEREON ARE APPROXIMATE ONLY. IT SHALL BE THE CONTRACTOR'S RESPONSIBILITY TO DETERMINE THE EXACT VERTICAL AND HORIZONTAL LOCATION OF ALL EXISTING UNDERGROUND UTILITIES PRIOR TO COMMENCING CONSTRUCTION. NO REPRESENTATION IS MADE THAT ALL EXISTING UTILITIES ARE SHOWN HEREON. THE ENGINEER ASSUMES NO RESPONSIBILITY FOR UTILITIES NOT SHOWN OR UTILITIES NOT SHOWN IN THEIR PROPER LOCATION.

CALL before you Dig
 1-800-227-2600
 UNDERGROUND SERVICE (USA)



REVISION DESCRIPTION
 APPROVED BY: [Signature]
 DATE: 9/25/03
 SCALE: 1"=40'
 CADFILE: cp1mup
 SHEET 5 OF 19 SHEETS
 CLV DWG NO: 10774736-055
 10774736-055

3610 North Ranch Drive
 Las Vegas, NV 89130
 Telephone: (702) 648-9700
 Fax: (702) 648-1143

ENGINEERING
 SOUTH WEST
 LAND PLANNING • MAPPING • DEVELOPMENT

NEVADA