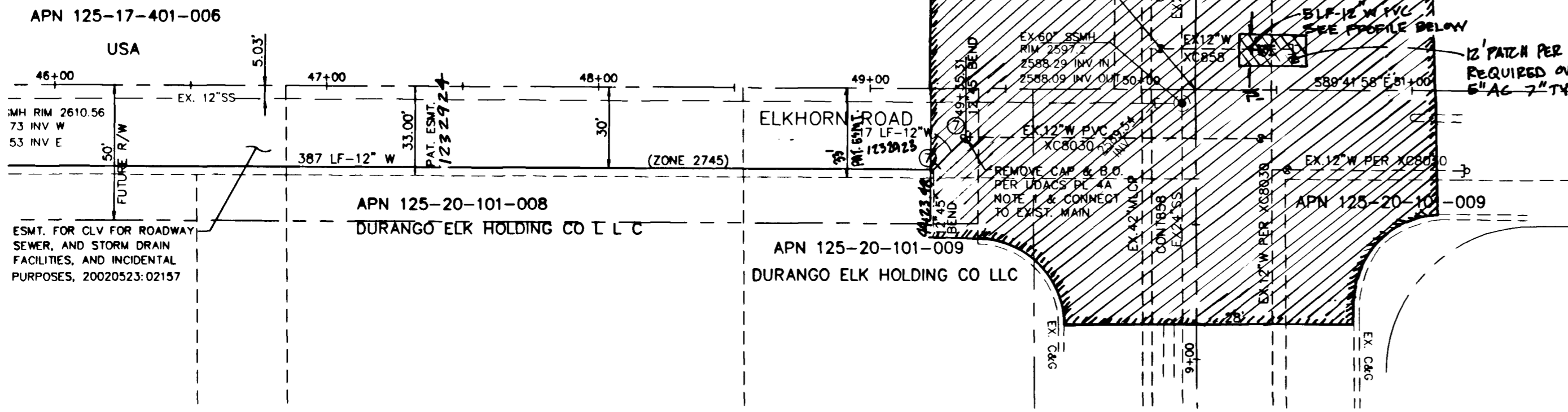


SEE SHEET 3



PLAN

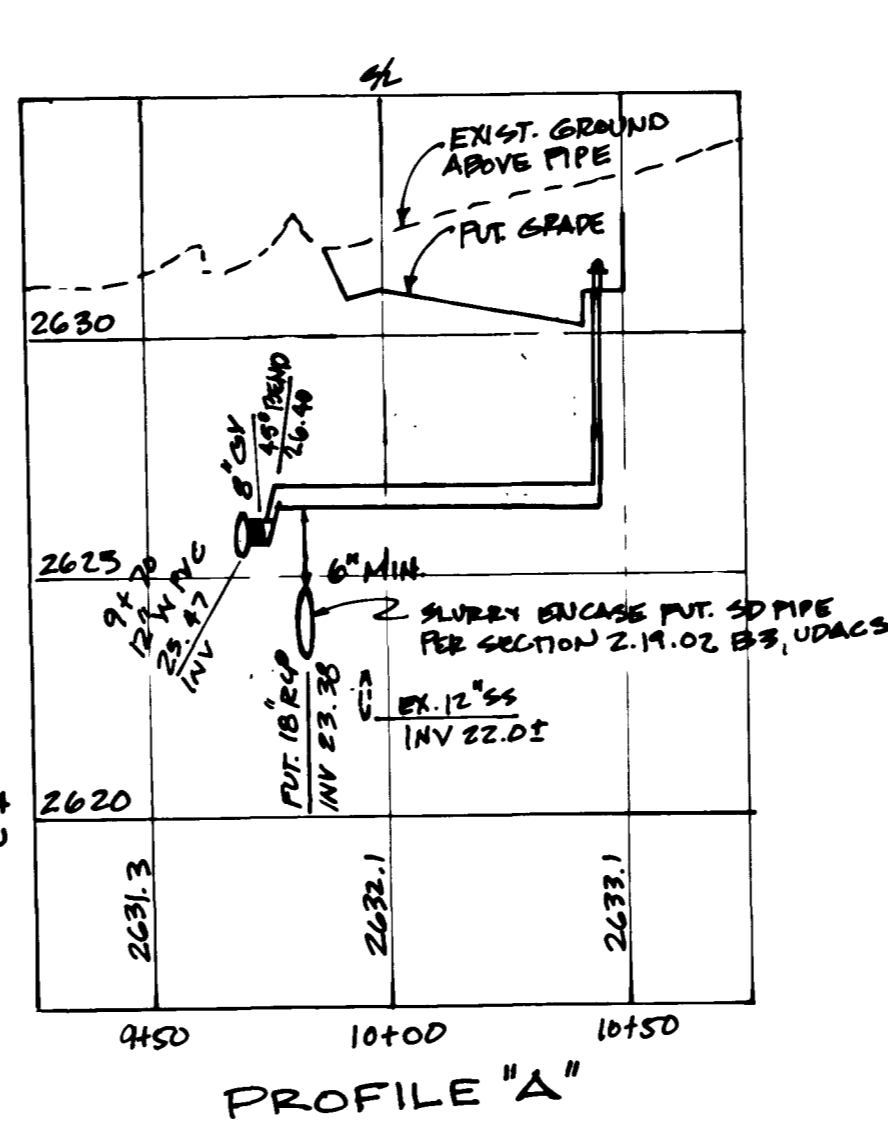


( IN FEET )  
 1 inch = 40 ft  
 VERTICAL SCALE = 1" = 4'

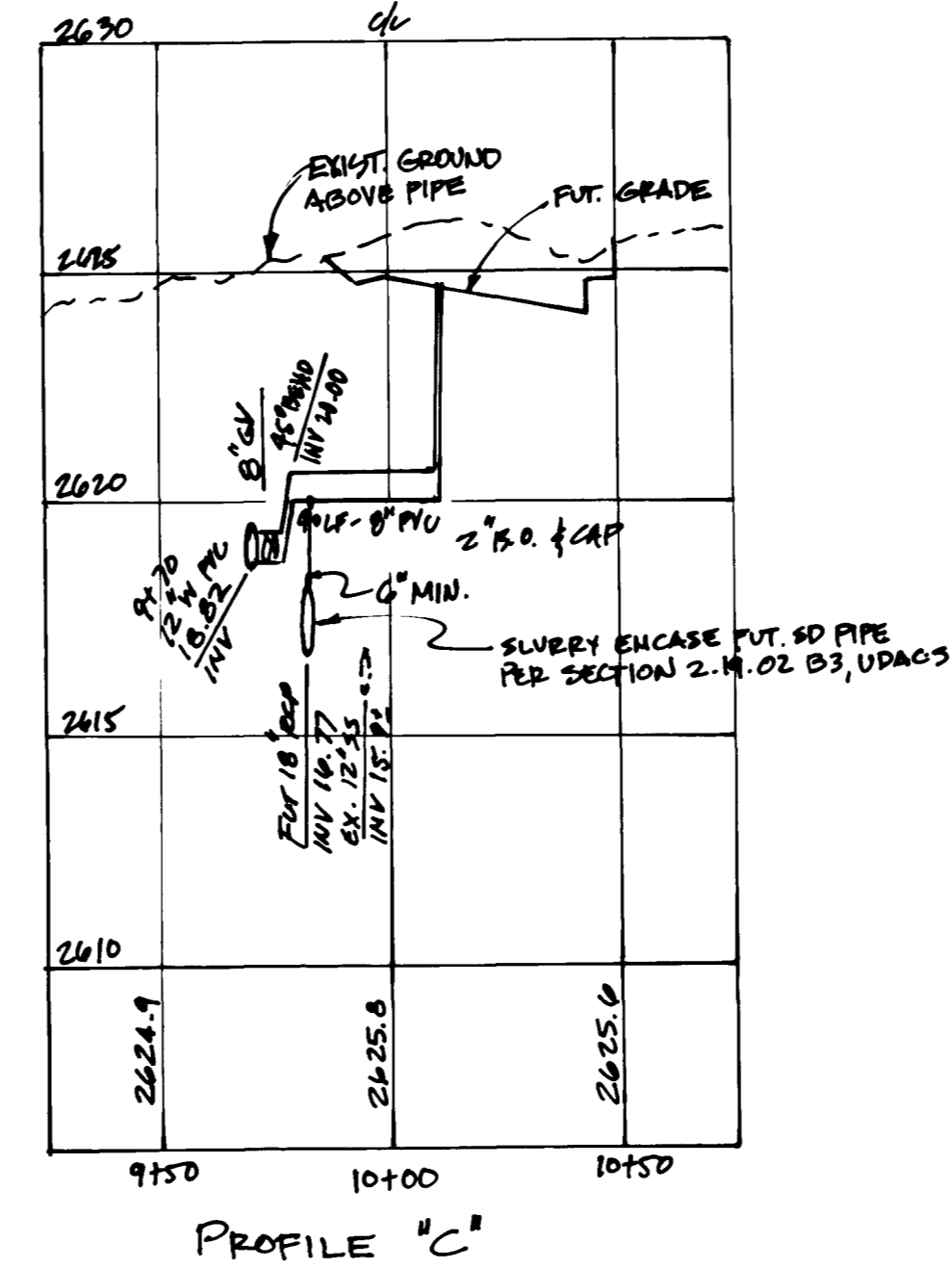
THE DISTRICT CANNOT GUARANTEE A WATER-TIGHT SHUTDOWN WHERE CONNECTIONS OR REPAIRS TO EXISTING FACILITIES ARE REQUIRED. THE CONTRACTOR SHALL ENSURE ALL LABOR AND EQUIPMENT IS AVAILABLE TO REMOVE FUGITIVE WATER WHICH MAY IMPEDE CONSTRUCTION AT ALL TIMES. COORDINATION WITH INSPECTION DIVISION MUST TAKE PLACE PRIOR TO ANY TRIAL SHUTDOWN. CONTRACTOR TO INSTALL TEMPORARY SERVICE TO ENSURE PROPER SHUTDOWN IN THE EVENT NO OTHER APPURTENANCES ARE AVAILABLE.

ROTMILL AND REPLACE 3/4" OPEN GRADE IN THE ENTIRE INTERSECTION

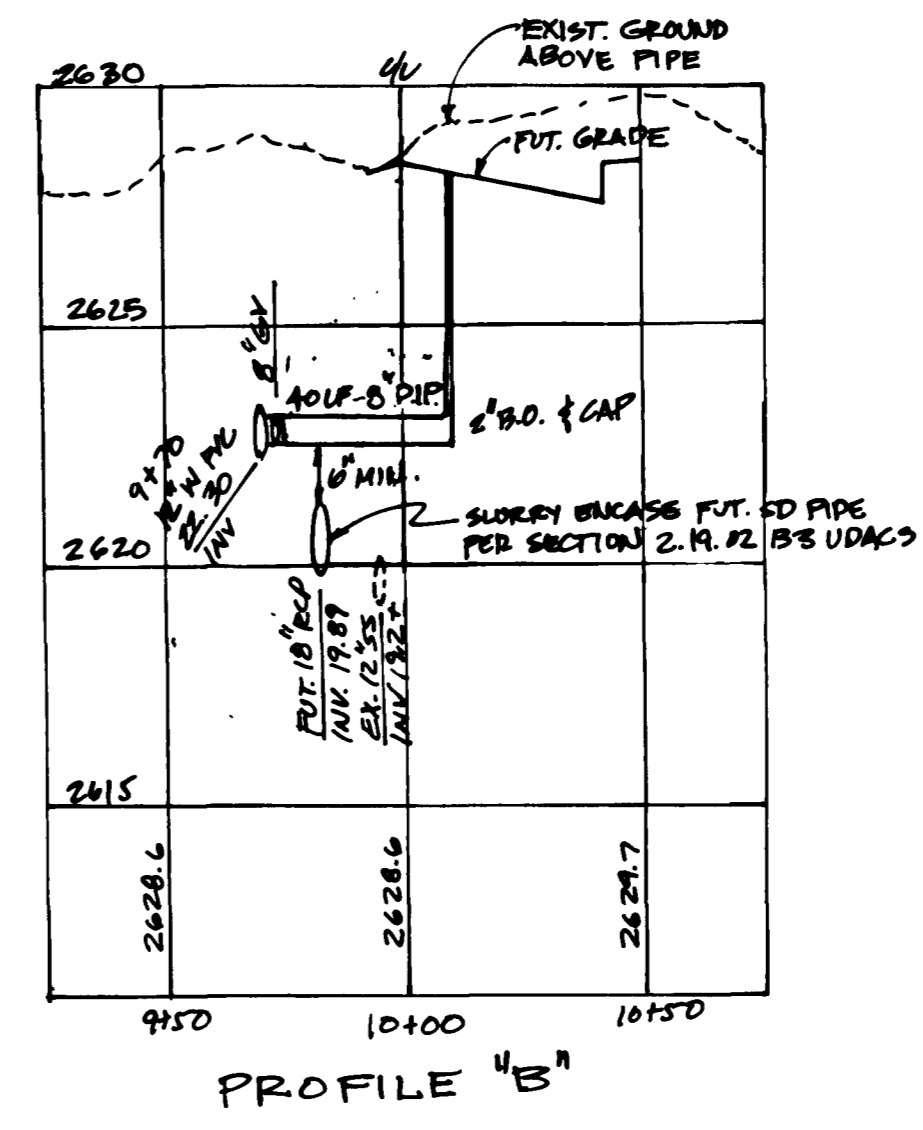
12" PVC PER STD DWG. #504 REQUIRED OVER WATER MAIN 6" AC 7" TYPE I



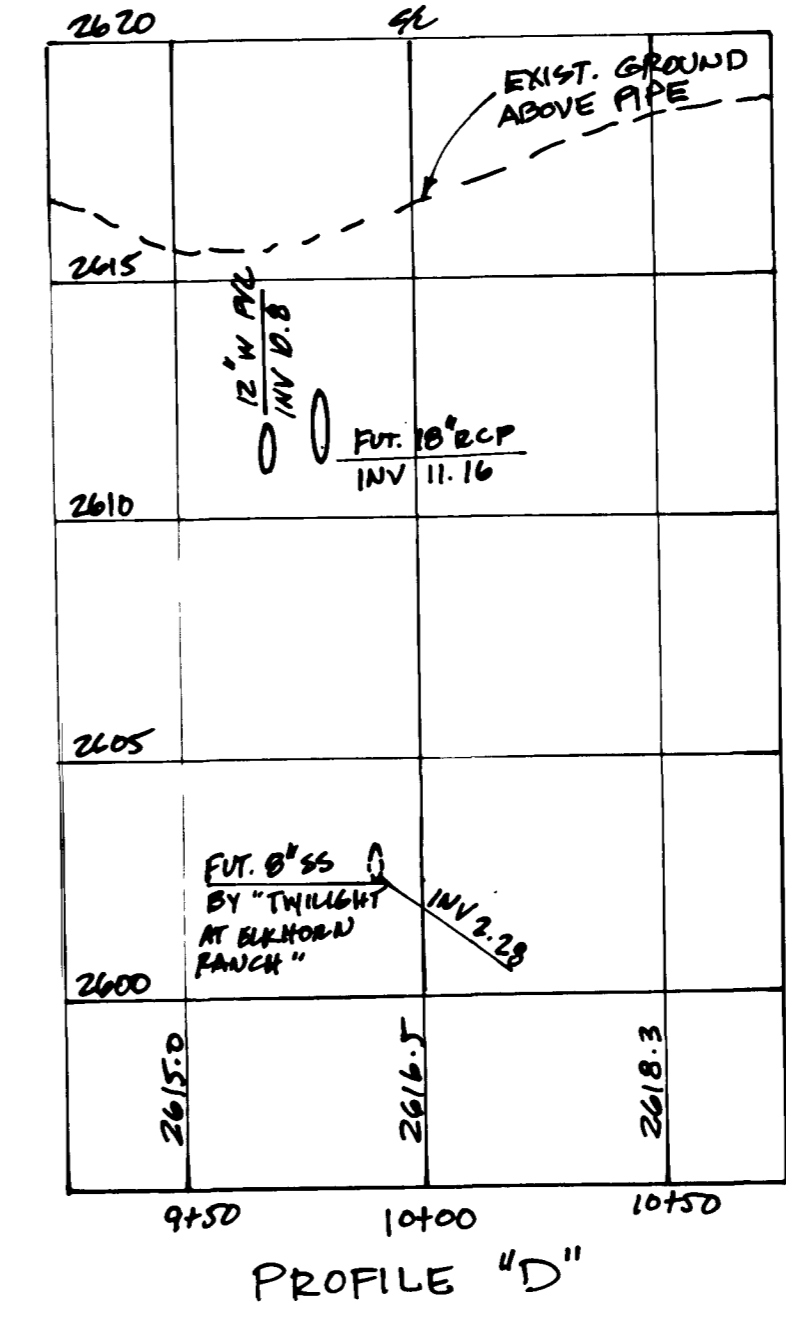
PROFILE "A"



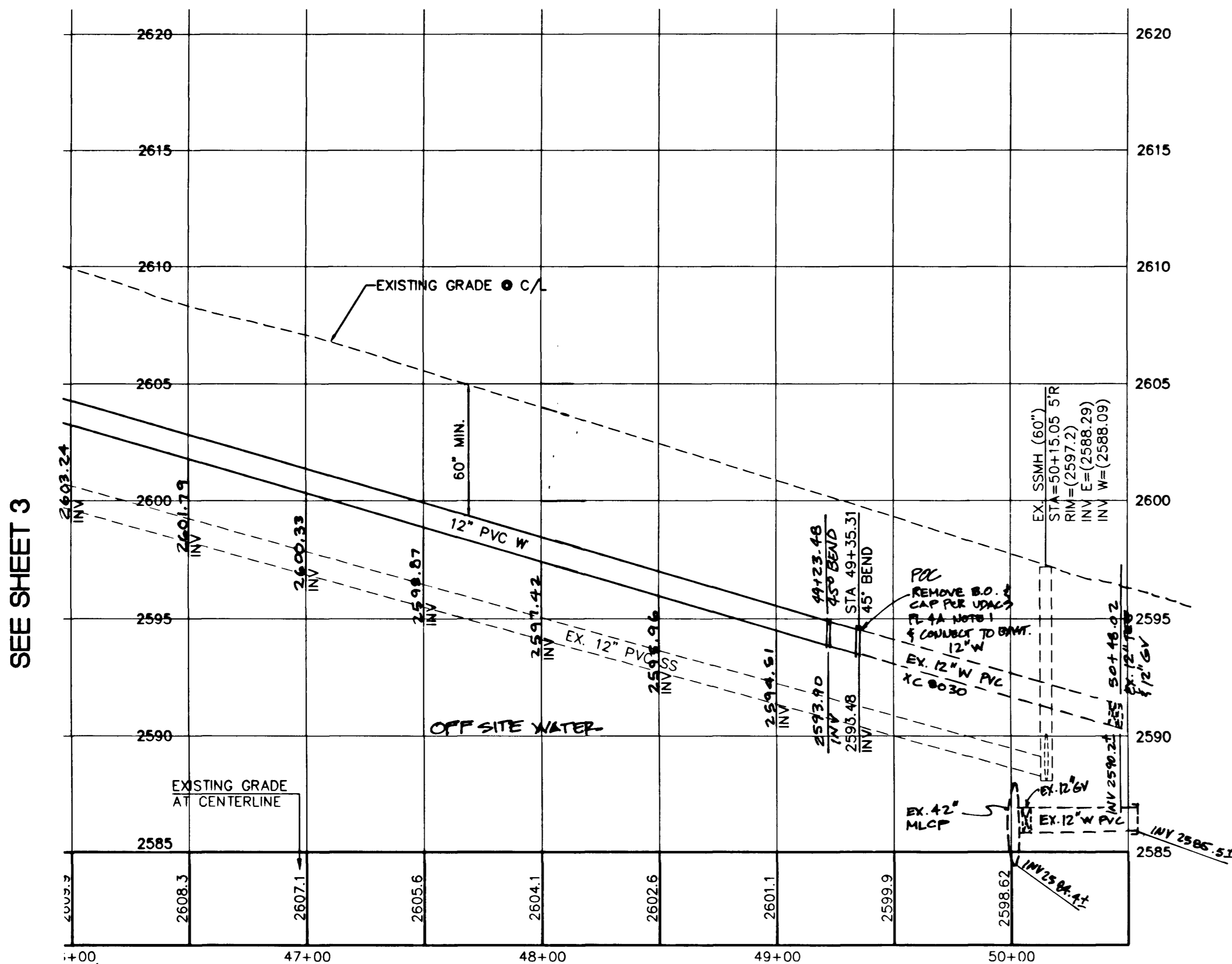
PROFILE "C"



PROFILE "B"

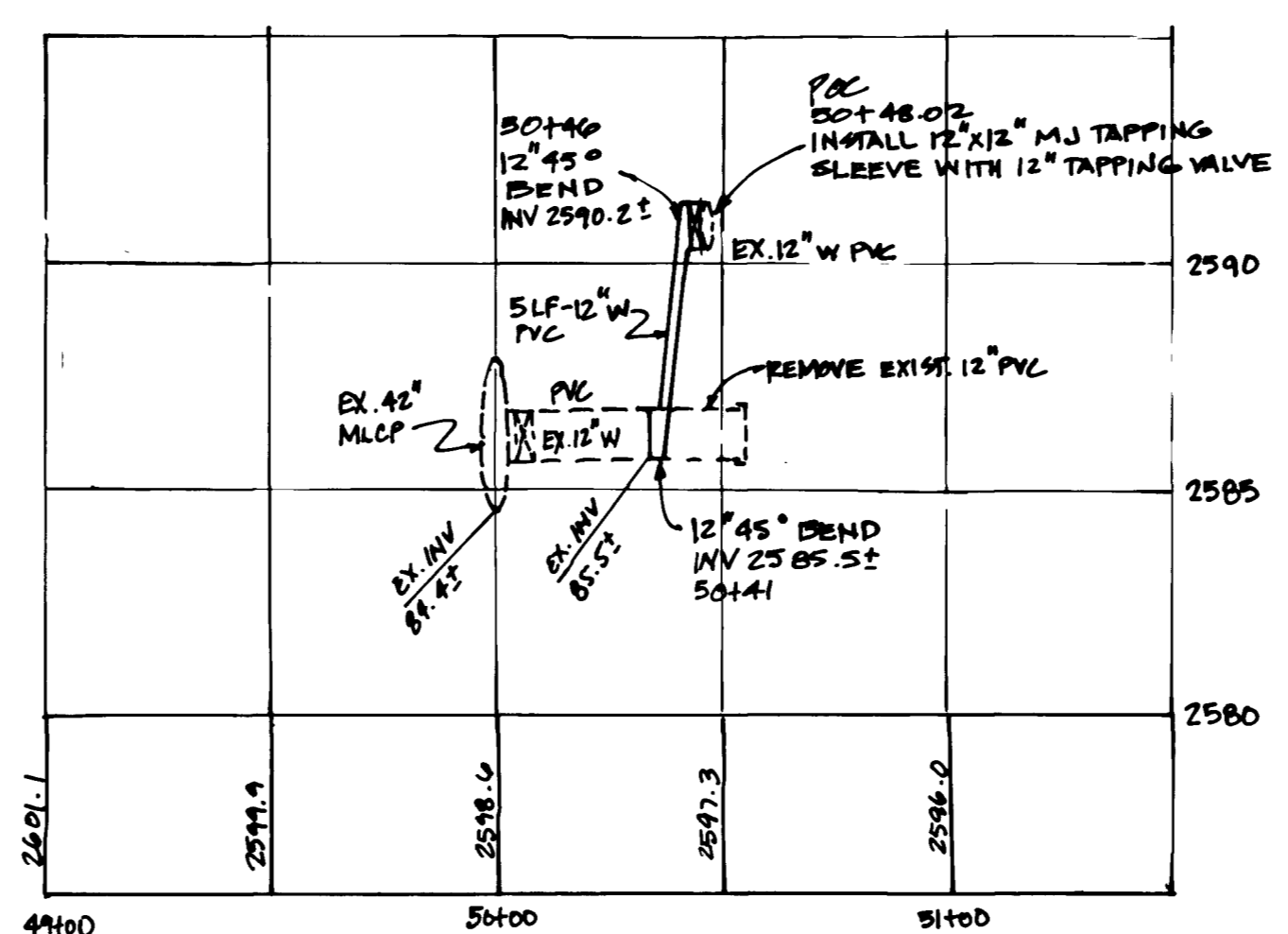


PROFILE "D"



PROFILE

**ELKHORN ROAD**  
 PUBLIC STREET



TIE IN PROFILE

**BASIS OF BEARINGS**

NORTH 00°06'43" WEST BEING THE WEST LINE OF THE SOUTHWEST QUARTER (SW 1/4) OF THE NORTHWEST QUARTER (NW 1/4) OF THE NORTHEAST QUARTER (NE 1/4) OF SECTION 19, TOWNSHIP 19 SOUTH, RANGE 60 EAST, M.D.M., CITY OF LAS VEGAS, CLARK COUNTY, NEVADA, AS SHOWN BY MAP IN THE OFFICE OF THE CLARK COUNTY, NEVADA RECORDER IN FILE 114 OF SURVEYS PAGE 57.

**BENCHMARK**

CITY OF LAS VEGAS VERTICAL CONTROL RIVET AND PLATE IN TOP OF CURB NORTH SIDE OF SAHARA AVE. AND CRYSTAL WATER WAY  
 STATION BLV90  
 ELEVATION = 791.62 METERS (NAV888)  
 2597.17 FEET

**SITE DESCRIPTION**

GOVERNMENT TO SIXTEEN (16) OF SECTION 17, T19S, R60E, M.D.M.  
 APN: 125-17-401-005

**DATE OF FIELD SURVEY**

MAY 8, 2003

**OWNER/DEVELOPER**

DEVELOPER  
 SOUTHWEST HOMES, LLC  
 245 E WARM SPRINGS ROAD, STE. 108  
 LAS VEGAS, NEVADA 89119  
 (702) 597-3233

**NOTE:**

THIS PROJECT PROVIDES FOR THE INSTALLATION OF OFF-SITE WATER MAINS ONLY AND DOES NOT PROVIDE OR IMPLY ANY WATER COMMITMENT.

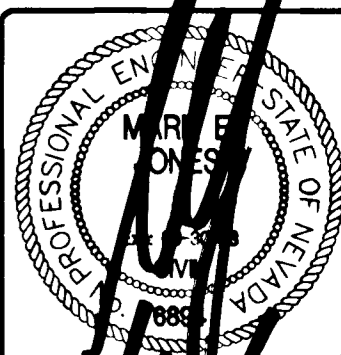
**CONSTRUCTION NOTES**

- ① INSTALL CAP & 2" BLOW OFF ASSY. PER UDACS PLATE 4
- ② INSTALL 8" GATE VALVE PER UDACS PLATE 8
- ③ INSTALL 12" GATE VALVE PER UDACS PLATE 8
- ④ INSTALL 12" x 8" TEE PER UDACS PLATE 5
- ⑤ INSTALL STD. FIRE HYD. W/ASSY. PER UDACS PLATE 7
- ⑥ INSTALL 12" TEE PER UDACS PLATE 5
- ⑦ INSTALL 12"-45° BEND PER UDACS PLATE 5
- ⑧ INSTALL 12"-90° BEND PER UDACS PLATE 5

**APPROVALS**

CITY FIRE MARSHAL *[Signature]* 11/2/03 DATE  
 L.V.W.D. *[Signature]* 11/7/03 DATE

NO.	DATE	BY	APPROV.	REVISION DESCRIPTION



3610 North Bonanza Drive  
 Las Vegas, Nevada 89130  
 Telephone: (702) 648-9700  
 Fax: (702) 648-1143

**ENGINEERING**  
**SOUTHWEST**  
 LAND PLANNING • MAPPING • DEVELOPMENT

TITLE  
 PROJECT  
 CITY OF LAS VEGAS

**WATERLINE PLAN AND PROFILE**  
 OFF-SITE WATER MAIN AND FIRE HYDRANT

**CENTENNIAL PARK**  
 SOUTHWEST HOMES

WORK ORDER NO. 030313  
 DESIGN BY: TEAM 1  
 DATE: 9-17-03  
 SCALE: 1"=40'  
 CADFILE: CPT-FH-PLAN  
 SHEET 4 OF 4 SHEETS  
 CLV DWG NO. 10714784-0W