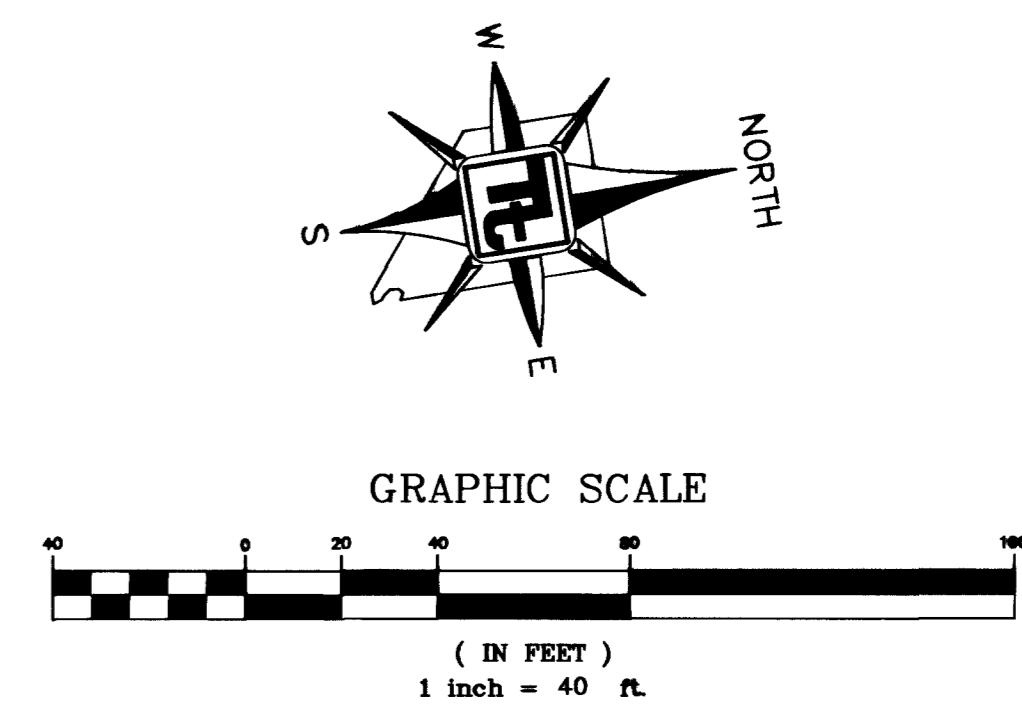


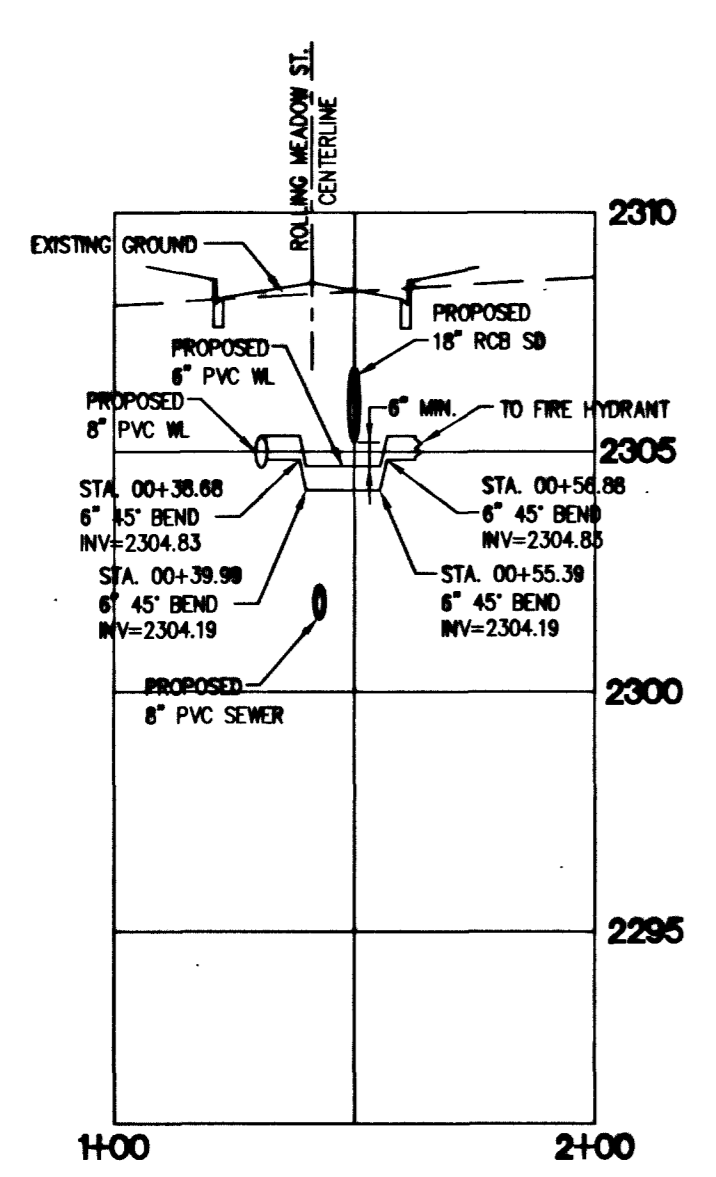
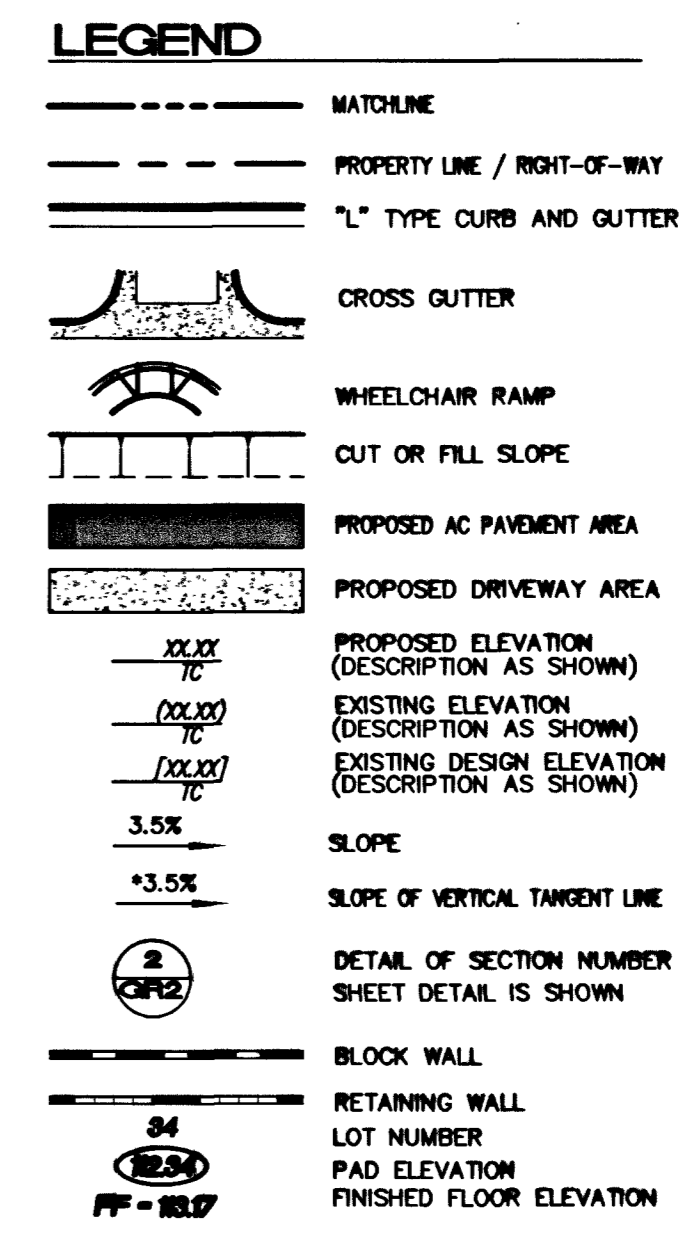
ROLLING MEADOW ST. - PLAN
HORIZONTAL SCALE 1"=40'



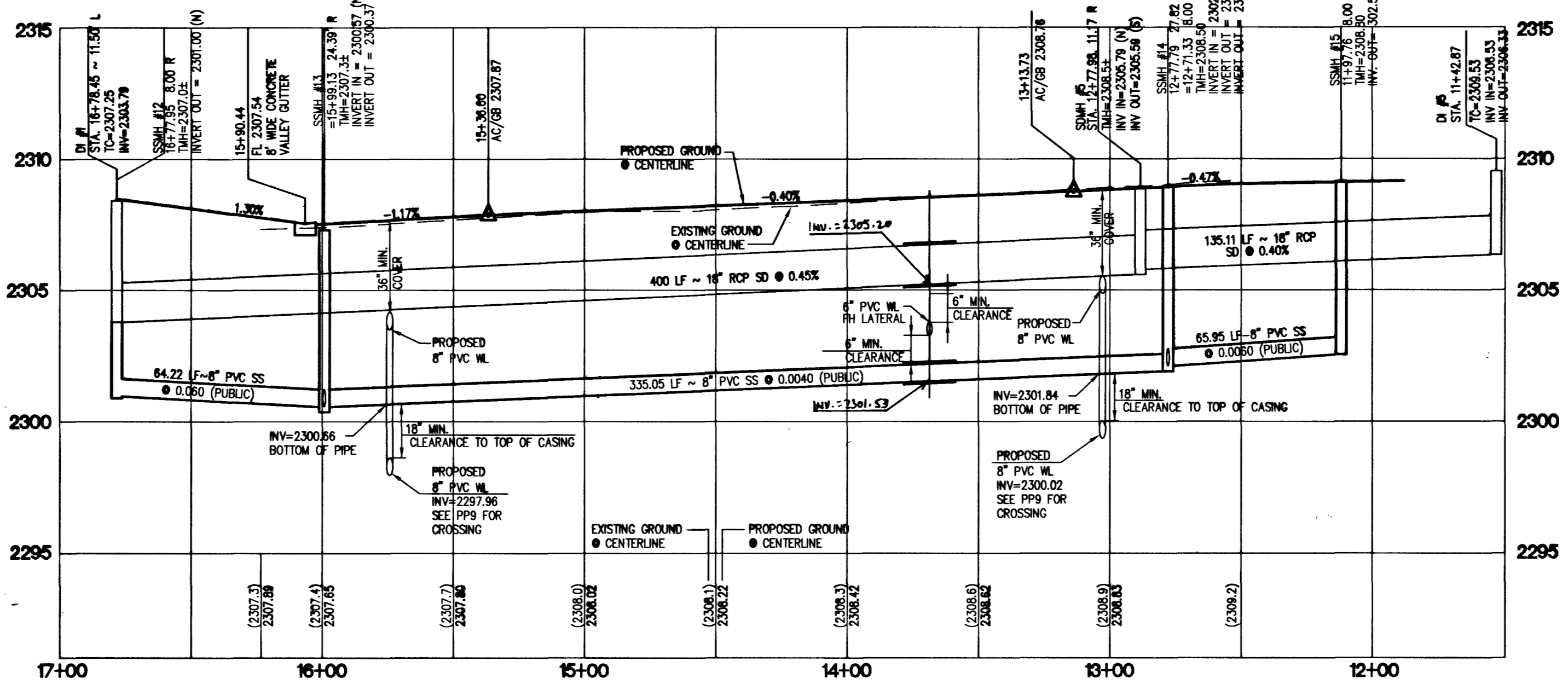
SOILS REPORT
GEO TECHNICAL & ENVIRONMENTAL SERVICES, INC.
7560 WEST SAHARA AVENUE, SUITE 101
LAS VEGAS, NEVADA 89117
TEL (702) 365-1001
PROJECT NUMBER:

BENCHMARK
CITY OF LAS VEGAS BENCHMARK SLV90 28C4
RIVET AND PLATE IN CONCRETE PAD (TRANSFORMER)
ON SOUTH SIDE OF TROPICAL PARKWAY +/-170 FT
WEST OF TORREY PINES
ELEVATION: 705.7687 METERS (NAVD 88)
2315.50 FEET (NAVD 88)

BASIS OF BEARINGS
NORTH 05°19'26" EAST, BEING THE BEARING OF THE EAST LINE OF THE NORTHEAST QUARTER (NE 1/4) OF SECTION 28, TOWNSHIP 19 SOUTH, RANGE 60 EAST, M.D.M., CITY OF LAS VEGAS, CLARK COUNTY, NEVADA, AS SHOWN BY A MAP ON FILE IN THE CLARK COUNTY RECORDER'S OFFICE, CLARK COUNTY, NEVADA IN FILE 90 OF PARCEL MAPS, AT PAGE 74.



FIRE HYDRANT - PROFILE
HORIZONTAL SCALE: 1"=40'
VERTICAL SCALE: 1"=4'



ROLLING MEADOW ST. - PROFILE (PRIVATE STREET)
HORIZONTAL SCALE: 1"=40'
VERTICAL SCALE: 1"=4'

CENTERLINE OF ROADWAY

CL CURVE NO.	BEARING	RADIUS	LENGTH	TANGENT
C1	88°44'37"	38.50	59.63	37.66
C2	90°01'33"	38.50	60.49	38.52
C3	89°58'27"	38.50	60.46	38.48

CURVE TABLE

CURVE	LENGTH	RADIUS	TANGENT	DELTA
C11	32.90'	20.00'	18.57'	88°44'37"
C12	88.29'	57.00'	55.76'	88°44'37"
C23	89.56'	57.00'	57.03'	90°01'33"
C24	31.42'	20.00'	20.01'	90°01'33"
C46	7.74'	5.00'	4.89'	88°44'37"
C47	7.96'	5.00'	5.11'	91°15'23"

- GRADING NOTES**
- TETRA TECH SHALL BE NOTIFIED IMMEDIATELY OF ANY DISCREPANCIES IN THE PLANS OR CONDITIONS IN THE FIELD.
 - ALL WORK TO BE PERFORMED OUTSIDE OF THE PROJECT BOUNDARY AND ON PRIVATE PROPERTY SHALL NOT BE PERFORMED UNTIL WRITTEN PERMISSION AND EASEMENT HAVE BEEN OBTAINED FROM THE OFF-SITE OWNER AND GIVEN TO CITY LAS VEGAS PUBLIC WORKS.
 - FOR AREAS THAT ARE FLATTER THAN 2:1 SLOPE, OR LESS THAN 1" ELEVATION DIFFERENCE, SCARPS ARE NOT SHOWN ON PLAN FOR CLARITY PURPOSES.
 - ALL SLOPE AREAS SHALL HAVE A MINIMUM ONE FOOT SHOULDER NEXT TO WALL PRIOR TO STARTING SLOPE.
 - PAD SECTION SHOWN ON PLANS IS FOR REFERENCE ONLY. FOR ACTUAL SECTION, REFER TO GEOTECHNICAL REPORT FOR SOILS ENGINEERS' RECOMMENDATION.
 - ALL SIDEWALK INSTALLATIONS SHALL CONFORM TO ADA REQUIREMENTS.
 - ADD 2200Z TO ALL ELEVATIONS SHOWN.

- STREET IMPROVEMENT CONSTRUCTION KEY**
- 37' PRIVATE ST. = CONSTRUCT 2" AC PAVING OVER 8.5" TYPE II BASE PER MODIFIED U.S.D.C.C.A. STANDARD DWG. NO. 210.
 - 60' PUBLIC R/W HALF STREET = 4" AC PAVING OVER 16" TYPE II BASE PER U.S.D.C.C.A. STANDARD DWG. NO. 205
 - CONSTRUCT "L" CURB PER U.S.D.C.C.A. STANDARD DWG. NO. 216
 - CONSTRUCT 8" WIDE CROSS GUTTER PER U.S.D.C.C.A. STANDARD DRAWING NO. 228
 - NOT USED
 - CONSTRUCT SIDEWALK UNDER-DRAIN PER U.S.D.C.C.A. DWG. NO. 236.
 - CONSTRUCT 5" WIDE CONCRETE SIDEWALK PER U.S.D.C.C.A. STANDARD DRAWING NO. 234
 - CONSTRUCT SIDEWALK RAMP PER U.S.D.C.C.A. DWG. NO. 235. TRANSITIONS PER RAMP DATA TABLE.
 - CONSTRUCT 6" HIGH DECORATIVE BLOCKWALL PER CLARK COUNTY STANDARDS AND SPECIFICATIONS.
 - 39' PRIVATE ST. = CONSTRUCT 2" AC PAVING OVER 4" TYPE II BASE PER MODIFIED U.S.D.C.C.A. STANDARD DWG. NO. 210.
 - 60' PUBLIC R/W HALF STREET = 3" AC PAVING OVER 10" TYPE II BASE PER U.S.D.C.C.A. STANDARD DWG. NO. 205
 - CONSTRUCT DEPRESSED CURB; PER STANDARD DWG. NO. 227
 - INSTALL REMOVABLE BOLLARDS PER DETAIL 4 SEE SHEET 21.
 - INSTALL WROUGHT IRON FENCING PER DETAIL 3 SEE SHEET 21.

APPROVALS

LAS VEGAS VALLEY WATER DISTRICT TECHNICAL APPROVAL

PROJECT NAME: _____

THIS PROJECT WATER PLAN COMPLIES WITH THE LAS VEGAS VALLEY WATER DISTRICT'S TECHNICAL REQUIREMENTS. HOWEVER, THIS WATER PLAN IS **NOT APPROVED FOR CONSTRUCTION** AT THIS TIME AND THIS SIGNATURE DOES NOT PROVIDE OR IMPLY A WATER COMMITMENT.

LAS VEGAS VALLEY WATER DISTRICT _____ DATE _____

LAS VEGAS VALLEY WATER DISTRICT _____ DATE 9/08/03

CITY OF LAS VEGAS FIRE DEPARTMENT _____ DATE _____

Avoid overhead power line contact.
Call before you Overhead
1-702-593-6111
NEVADA POWER ENVIRONMENT SAFETY SERVICES DEPARTMENT

Avoid cutting underground utility lines. It's costly.
Call before you Dig
1-800-227-2600
UNDERGROUND SERVICE (USA)

PROTECT WATERLINES IN PLACE. WHEREVER A WATERLINE IS ABOVE A STORM DRAIN OR SEWER WHERE COMPACTION REQUIREMENTS UNDER A WATERLINE CANNOT BE MET, BACKFILL TRENCH WITH CLASS II CONTROLLED LOW STRENGTH MATERIAL (CLSM) TO THE SPRINGLINE OF THE WATERLINE. THIS REQUIREMENT IS FOR STRUCTURAL SUPPORT ONLY. ADDITIONAL HEALTH REGULATIONS MAY APPLY PER UDAGS 2.19.

NOTE:
ALL PRIVATE STREETS & DRIVES ARE P.U.E., CLV SEWER EASEMENTS, AND PUBLIC DRAINAGE EASEMENTS TO BE PRIVATELY MAINTAINED BY HOA.

US HOME CORPORATION
3765 E. SUNSET ROAD STE. B-1
LAS VEGAS, NEVADA 89120
(702) 458-7700

TETRA TECH, INC.
11500 S. TROPICAL PARKWAY, SUITE 100, LAS VEGAS, NEVADA 89138
(702) 365-1001

STREET PLAN AND PROFILE
ROLLING MEADOW STREET

AZURE / JONES
CITY OF LAS VEGAS, NEVADA

QUALITY CONTROL BY: _____
DESIGNED BY: _____
CHECKED BY: _____
SCALE: 1"=40'
PROJECT NO. P10027-0004

SEAL
JOSEPH D. MASON
Professional Engineer
No. 11907
Civil
9/10/03

SHEET PP8
16 OF 22
DRAWING NO. 16744774