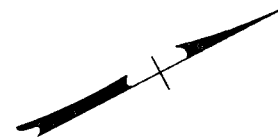


FED. ROAD REG. NO.	STATE	PROJEC. NO.	COUNTY	CONTROL SECTION	STATE ROUTE	SHEET NO.	TOTAL SHEETS
7	NEVADA	US-568-4(2)	CLARK	03-015	5	7	



NOTE:
For data not shown see Layout Sheets and sheet N° 8

"0"110+66 to "0"112+66 ~ Remove median island Lt. (See Sheet N° 15)

"0"110+66 to "0"112+61.40 ~ Median island Lt. (See Sheet N° 15)

"0"111+84 to "0"112+79 ~ Remove right turn island and sidewalks Lt.

"0"111+92 to "0"112+73 ~ Right turn island Lt.

See Sheet N° 8 for R/W Data

"0"113+46.84 to "0"113+57.80 ~ Right turn island Lt.

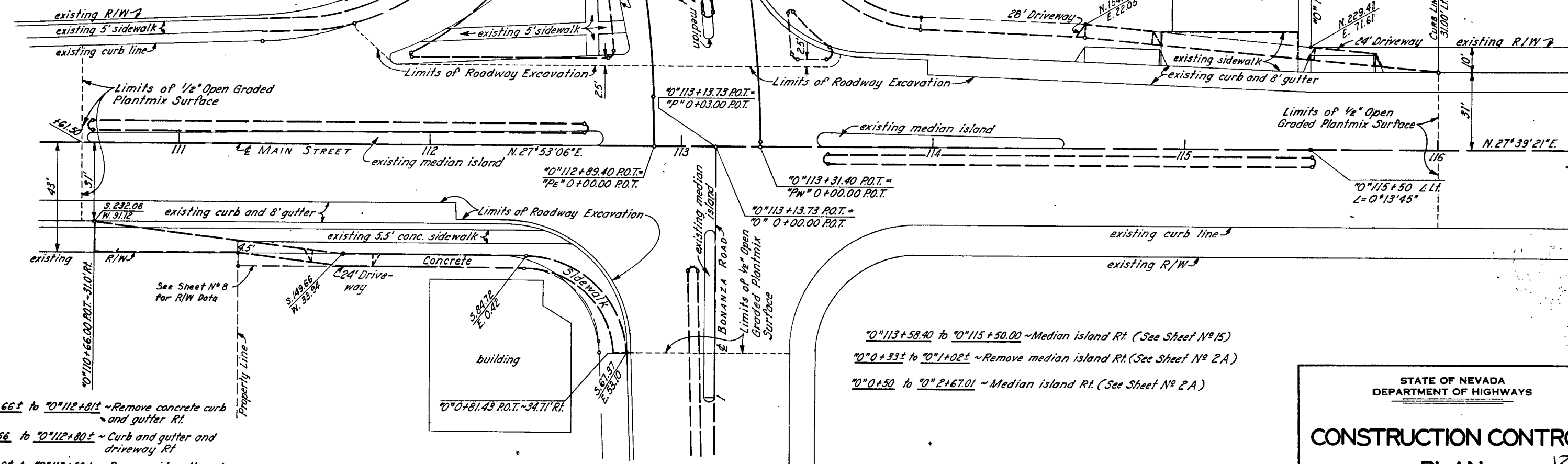
"0"113+47± to "0"116+00.10 ~ Curb and gutter and driveways Lt.

"0"113+57 to "0"114+50 ~ Remove median island Lt. (See Sheet N° 15)

"P_E" 0+00 and "P_W" 0+00 ~ Install Intersection Lighting and Signal System (See Sheet N° 17)

"0"113+97.38 to "0"116+00.10 ~ Remove curb and gutter and driveways Lt.

"0"114+90.50 to "0"115+45 ~ Remove existing sidewalk. Construct New sidewalk Lt.



"0"110+66± to "0"112+81± ~ Remove concrete curb and gutter Rt.

"0"110+66 to "0"112+80± ~ Curb and gutter and driveway Rt.

"0"110+66± to "0"112+50± ~ Remove sidewalk and driveway Rt.

"0"110+66± to "0"112+78± ~ Sidewalk Rt.

"0"113+58.40 to "0"115+50.00 ~ Median island Rt. (See Sheet N° 15)

"0"0+33± to "0"1+02± ~ Remove median island Rt. (See Sheet N° 2A)

"0"0+50 to "0"2+67.01 ~ Median island Rt. (See Sheet N° 2A)

STATE OF NEVADA
DEPARTMENT OF HIGHWAYS

CONSTRUCTION CONTROL PLAN

12