

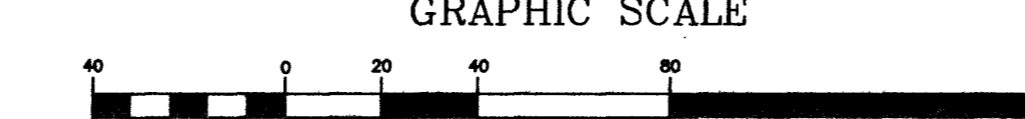
**CONSTRUCTION NOTES:**

- 1 CONSTRUCT CURB/GUTTER & SIDEWALK PER STD. DWG.(s) 216 AND 234
- 2 CONSTRUCT GLUE DOWN TYPE "A" CURB SEE DETAIL SHT. TSS-2
- 3 CONSTRUCT PAVEMENT SECTION 3 SHT TSS-1
- 4 CONSTRUCT CASE 1 SIDEWALK RAMP STD. DWG. NO. 235
- 5 CONSTRUCT BUS TURNOUT PER. STD. DWG. NO.234.1
- 6 CONSTRUCT PAVEMENT SECTION 6 SHEET TSS-1
- 7 CONSTRUCT RESIDENTIAL DRIVEWAY PER STD. DWG. 223
- 8 CONSTRUCT COMMERCIAL DRIVEWAY PER. STD. DWG. NO. 225
- 9 INSTALL DECORATIVE ROCK PER PAVEMENT SECTIONS AND SPEC SECTION 305
- 10 CONSTRUCT PAVEMENT TRANSITIONS PER TYPICAL SECTION 6 AND DETAIL ON SHT G-1
- 11 CLEAR & GRUB PER. STD. SPEC. 201.03.02 (a)
- 12 CONSTRUCT PAVEMENT AT INTERSECTION PER SECTION 9 ON SHT. TSS-2
- 13 CONSTRUCT CHAINLINK FENCE STD. DWG. 252
- 14 REMOVE EXISTING SIGN AND ALL APPURTENANCES
- 15 REMOVE EXISTING CHAINLINK FENCE
- 16 CONSTRUCT 1' MEDIAN OPENING SEE DETAIL ON TSS-2
- 17 CONSTRUCT PAVEMENT SECTION 1 SHEET TSS-1
- 18 CONSTRUCT PAVEMENT SECTION 7 SHEET TSS-2
- 19 CONSTRUCT PAVEMENT SECTION 8 SHEET TSS-2
- 20 REMOVE & REPLACE EXISTING SIDEWALK RAMP AND CONSTRUCT CASE 1 SIDEWALK RAMP PER STD. DWG 235
- 21 CONSTRUCT GLUE DOWN MEDIAN SEE SHT. TSS-2

NOTE: ALL MEDIAN CURB DATA IS TO F.O.C. ALL OTHER CURVE DATA IS TO B.O.C.

CURVE	LENGTH	RADIUS	DELTA	TANGENT
C1	48.01	30.00	91°41'01"	30.89
C2	47.22	30.00	90°10'30"	30.09
C3	46.28	30.00	88°22'45"	29.16
C4	4.13	25.00	09°27'44"	2.07
C5	4.13	25.00	09°27'44"	2.07
C5A	23.56	15.00	90°00'00"	15.00
C6	6.12	25.00	14°02'10"	3.08
C6A	23.56	15.00	90°00'00"	15.00

CURVE	LENGTH	RADIUS	DELTA	TANGENT
C7	6.12	25.00	14°02'10"	3.08
C17	3.14	1.00	80°00'00"	INFINITE
C18	49.11	200.00	14°04'12"	24.68
C19	49.11	200.00	14°04'12"	24.68
C20	49.60	202.00	14°04'12"	24.93
C21	48.62	198.00	14°04'12"	24.43
C46	47.00	30.00	89°45'44"	29.88



**BASIS OF BEARING**

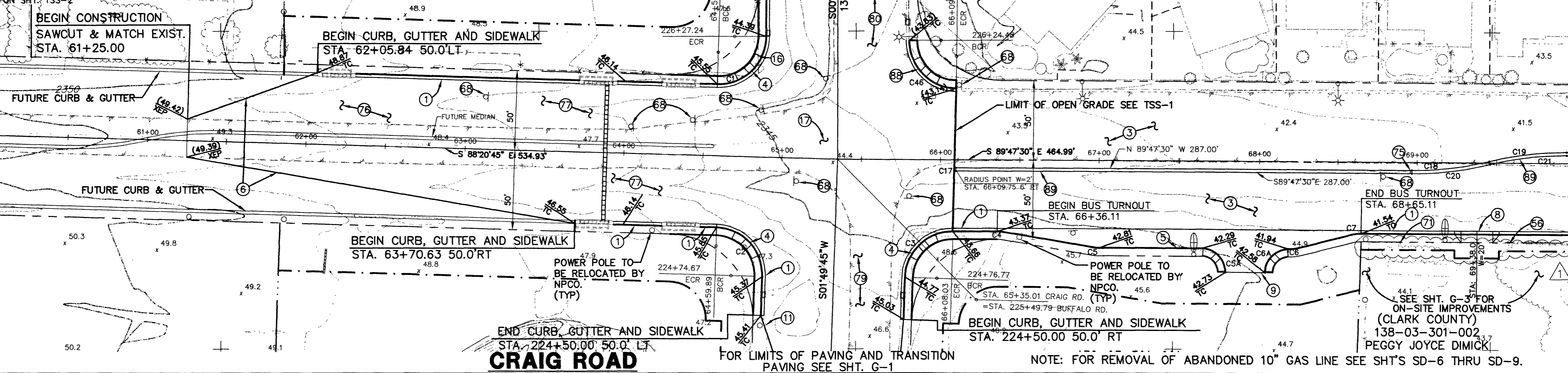
NORTH 39°40'38" WEST BEING THE BEARING OF THE LINE FROM POINT 825 TO POINT NO. 808 AS SHOWN BY THAT CERTAIN RECORD OF THE SURVEY ON FILE IN THE OFFICE OF THE CLARK COUNTY RECORDER, CLARK COUNTY, NEVADA IN FILE 88, PAGE 53. SAID BEARING BEING BASED ON THE NORTH AMERICAN DATUM OF 1983 (NAD '83), NEVADA STATE PLANE EAST ZONE(2701)

**BENCHMARK**

NAVD 88- CLV BENCH 1LV003W4  
CLV PIN & PLATE IN TOP OF ELEC. BASE SOUTH SIDE OF CRAIG RD., 250' +/- EAST OF BUFFALO DR.  
ELEVATION 714.730 METERS, 2344.91 FEET

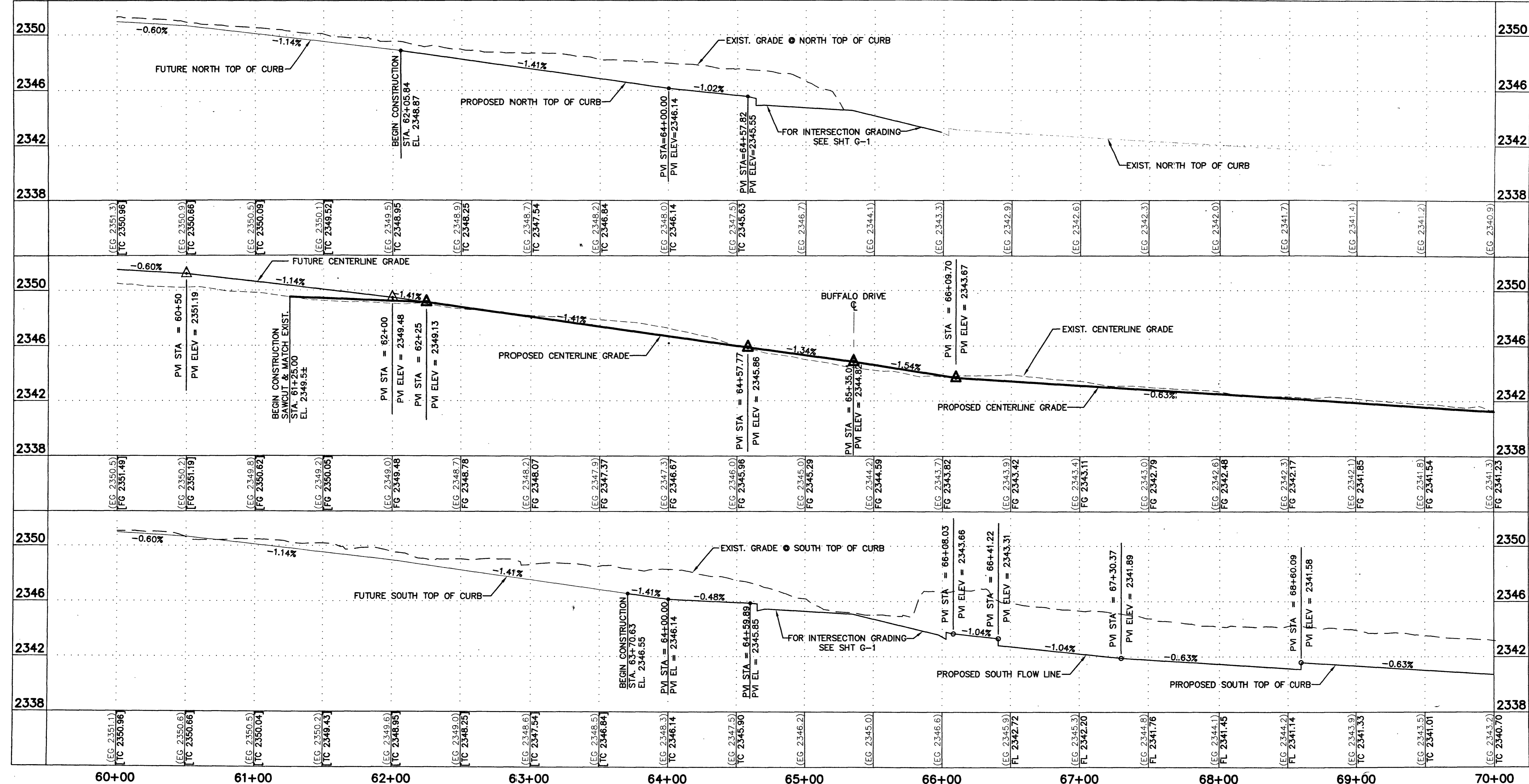
**MATCHLINE STATION 60+00**

**MATCHLINE STATION 70+00**



**SIDEWALK RAMP TABLE**

RAMP @ CURVE	"A" FT. MIN.	"B" FT. MIN.
C1	7.5	4.0
C2	6.5	6.5
C3	4.0	7.5
C46	6.5	6.5



REV.	DATE	BY	REVISION
3/21/00			DMS REVISED CONSTRUCTION EASEMENT

**CITY OF LAS VEGAS**  
731 SOUTH FOURTH STREET  
LAS VEGAS, NEVADA 89101

**URS Greiner**  
2785 EAST DESERT INN ROAD  
LAS VEGAS, NEVADA 89121  
(702)-796-7775 FAX (702)-796-1803

**CRAIG ROAD PLAN AND PROFILE STA. 60+00 TO STA. 70+00**  
**CRAIG ROAD IMPROVEMENTS BID NO. 00.1730.23**

SHEET 15 OF 55 SHEETS

DRAWN BY: DMS/MRA	7/20/98
DESIGNED BY: DMS/MRA	7/20/98
CHECKED BY: DM	7/20/98
PROJECT NO: 44300	SCALE: 1"=40' HOR. 1"=4' VERT.

**Call before you Overhead**  
1-702-593-6111  
PROFESSIONAL ENGINEERS & SURVEYORS  
SAFETY SERVICES DEPARTMENT

**Call before you Dig.**  
1-800-227-2600  
UNDERGROUND UTILITY SERVICE AGENCY (U.S.A.)

**PROFESSIONAL ENGINEER**  
DOYLE BEAMAN  
CIVIL  
No. 7401  
EXPIRES 12/31/00

SHEET **S-6R**  
15 OF 55 SHEETS  
DRAWING NO. **107-V3048**