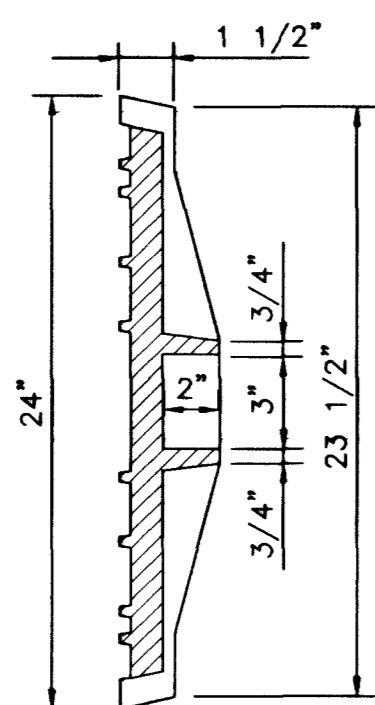
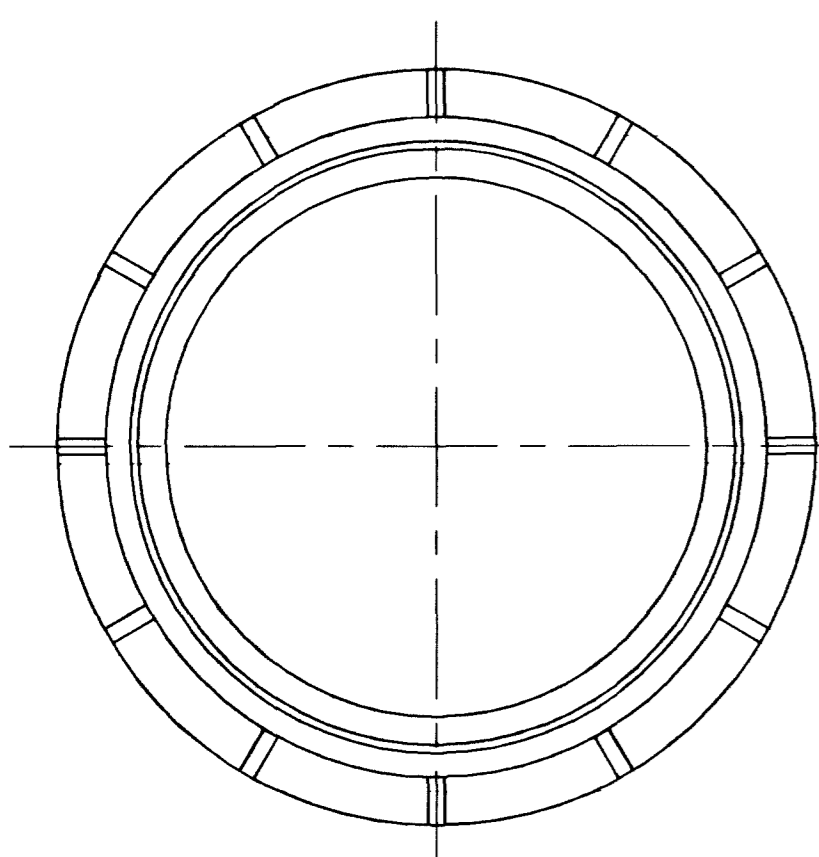


PLAN VIEW

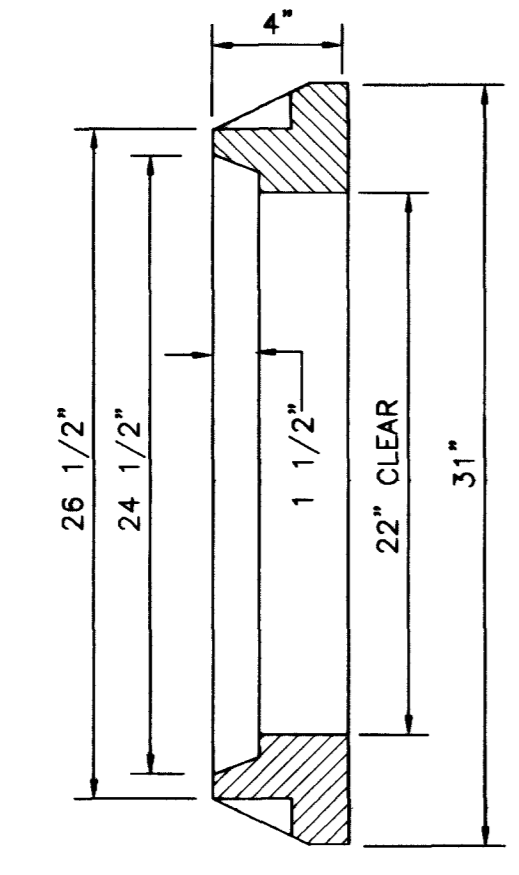


SECTION - TYPICAL

COVER DETAIL



PLAN VIEW



SECTION - TYPICAL

FRAME DETAIL

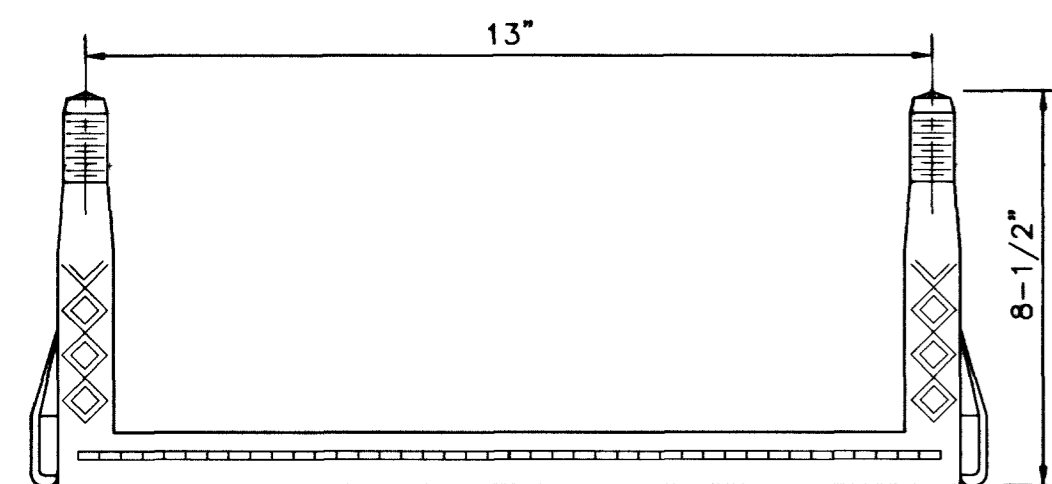
NOTES:

1. FRAME AND COVER TO BE "ALHAMBRA FOUNDRY CO" TYPE A1310 OR EQUAL.
2. CAST IRON SHALL HAVE MINIMUM TENSILE STRENGTH OF 30,000 PSI.
3. FRAME & COVER MACHINED TO FIT.
4. WEIGHT OF FRAME & COVER 330 LBS MINIMUM.
5. COVER WILL DESIGNATE "STORM DRAIN" AND "CITY OF LAS VEGAS" IN RAISED LETTERS.

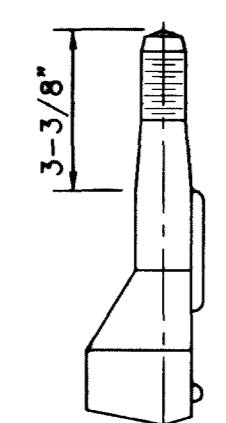
**STORM DRAIN
24" DIA MANHOLE COVER AND FRAME DETAIL**

SCALE: NONE

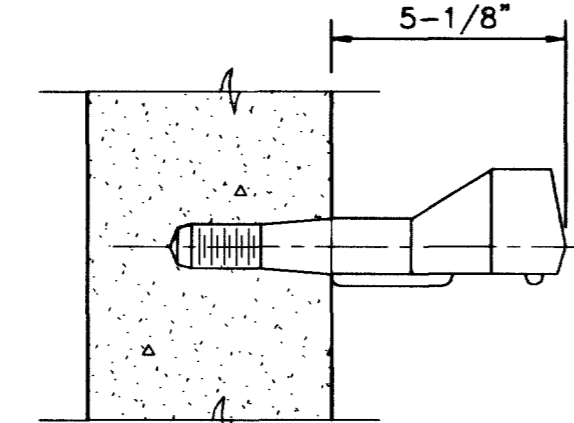
1
C15
C14,C16



PLAN VIEW



END VIEW



WALL SECTION

NOTES:

1. MANHOLE STEP SHALL CONFORM TO ASTM C-497.
2. ALUMINUM STEPS SHALL BE SOLID, MADE FROM MATERIAL IN CONFORMANCE WITH ASTM B221 (ALLOY 6005-TS)
3. REINFORCED PLASTIC STEPS SHALL BE POLYPROPYLENE PLASTIC, WITH NO 4 (MIN.) DEFORMED STEEL ROD (GRADE 60/ASTM A-615).
4. STEPS SHALL BE EVENLY SPACED FROM 12" TO 16".

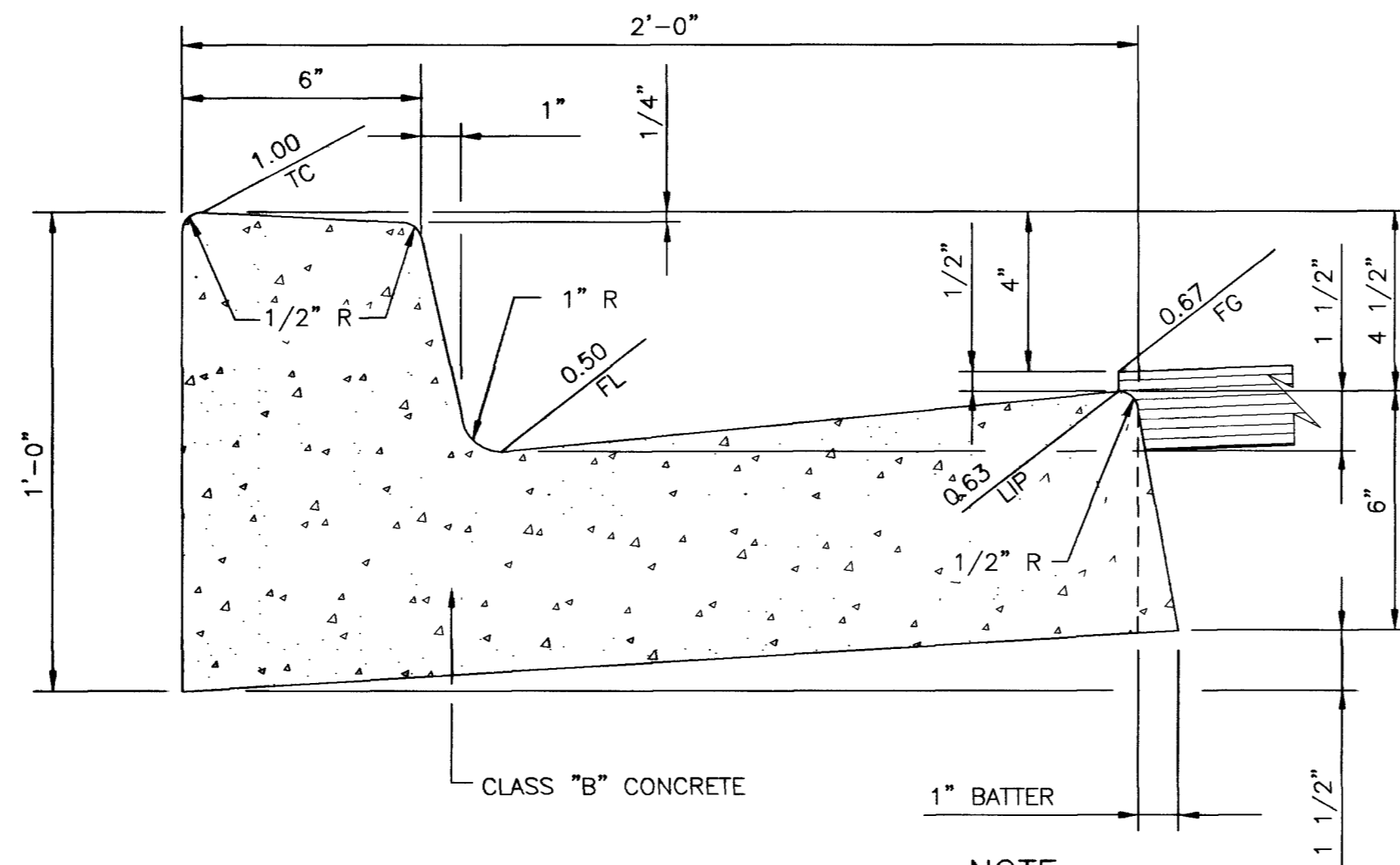
ELEVATION

MANHOLE STEP DETAIL

SCALE: NONE

54698

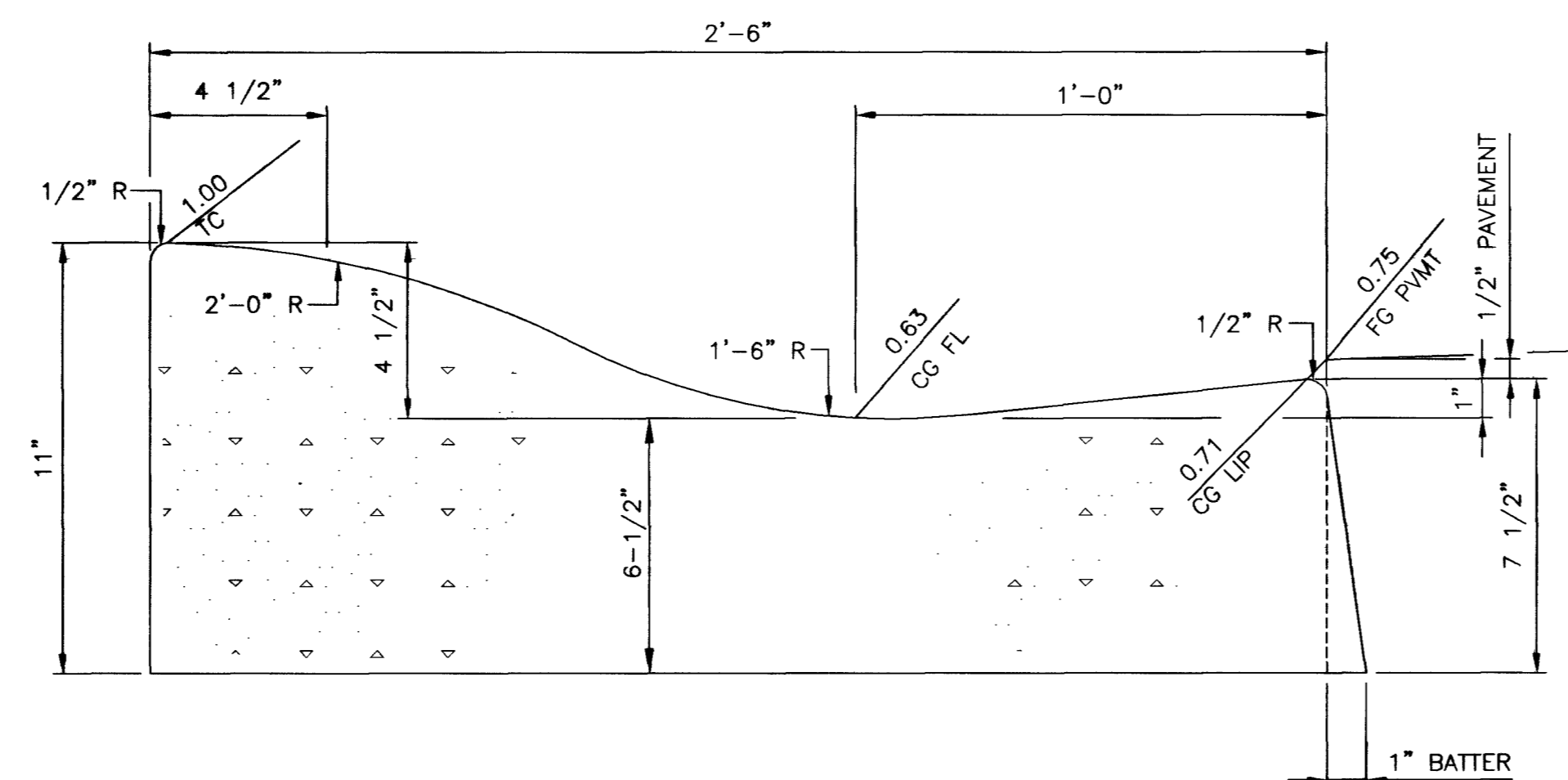
2
C15
C14,C16



24" "L" TYPE CURB AND GUTTER DETAIL

SCALE: 3" = 1'-0"

3
C15
C14,C17

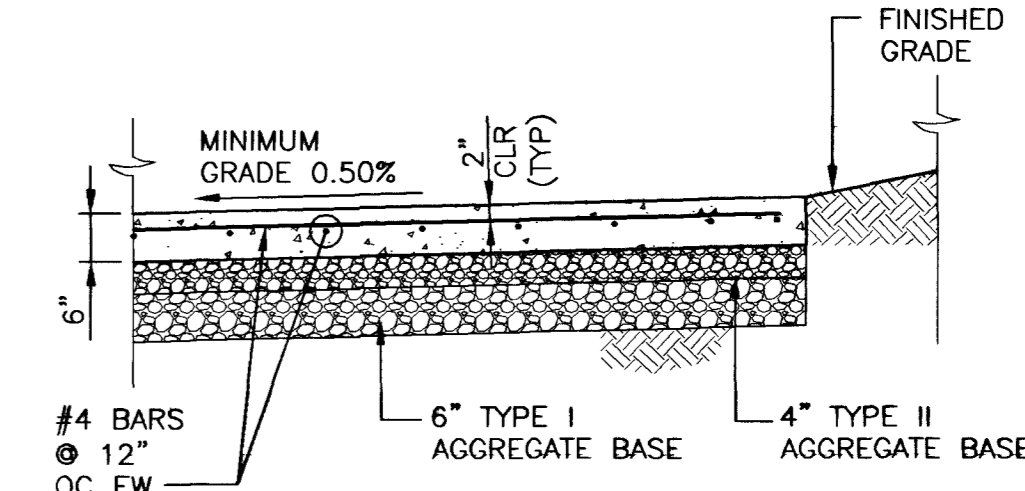


30" ROLL TYPE CURB AND GUTTER DETAIL

SCALE: 3" = 1'-0"

4
C15
C17

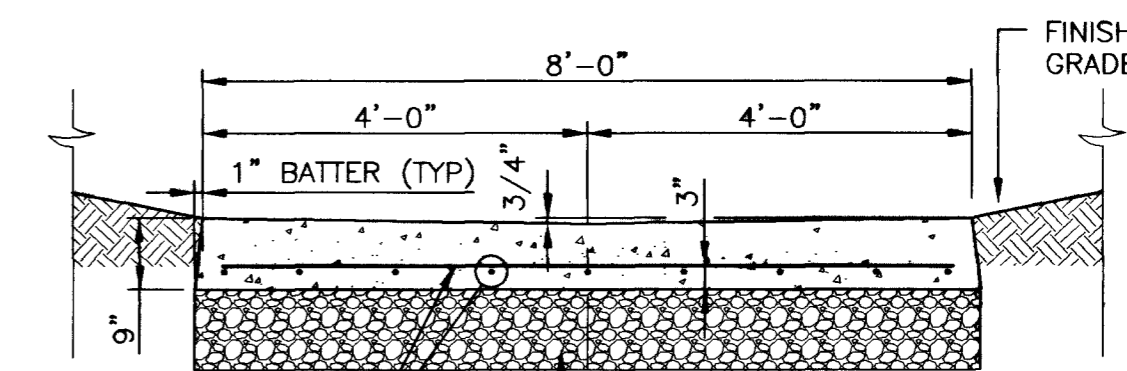
NOTE:
1" BATTER OPTIONAL



**CONCRETE DRAIN APRON DETAIL
SECTION (TYP)**

SCALE: 1/2" = 1'-0"

A
C15
C14



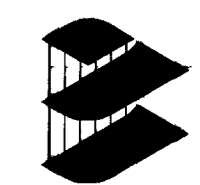
**CONCRETE CROSS GUTTER DETAIL
TYPE 1 - SECTION (TYPICAL)**

SCALE: 1/2" = 1'-0"

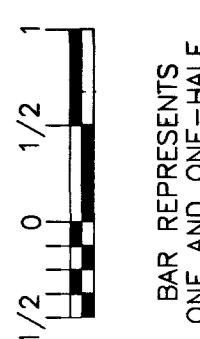
B
C15
C02

LAS VEGAS VALLEY WATER DISTRICT

G.C. WALLACE, INC.
Engineers/Planners/Surveyors
1545 SOUTH RANBOW BLVD., LAS VEGAS, NEVADA 89148
TELEPHONE: (702) 894-2000 • FAX: (702) 894-2299



VERIFY SCALE



BAR REPRESENTS ONE AND ONE HALF INCHES ON ORIGINAL

3205 ZONE RESERVOIR EXPANSION

SITE DETAILS V

SCALE AS SHOWN

1046C15.DWG Plot • XX/XX/XX XX:XX

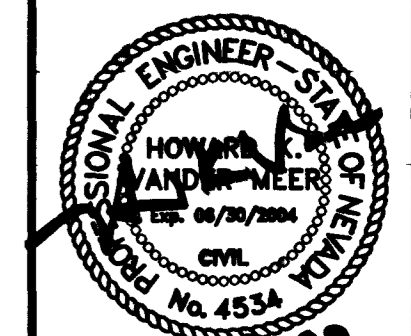
DRAWN BY: J. C. LITTLE 07/9/02

CHECKED BY: M. W. MAIZE 07/12/02

RECOMMENDED BY: L. STEVEN ANDERSON DATE

ACCEPTED BY: DESIGN MANAGER DATE

09:12:27 06-13-05



CONTRACT NUMBER
C1046
DRAWING NUMBER C15
SHEET 21 OF 95

CLV DRAWING #545-388
CLV CIVIL SHEET 21 OF 30

G:\02052-225\Wwg\improv\Civil\1046C15.dwg