

- ### CONSTRUCTION NOTES
- INSTALL 8" GATE VALVE PER UDACS PLATE 3.
 - INSTALL 8"x8"x8" TEE PER UDACS PLATE 5.
 - INSTALL 8" 90° ELBOW PER UDACS PLATE 5.
 - INSTALL 8" 45° ELBOW PER UDACS PLATE 5.
 - INSTALL 8" 22.5° ELBOW PER UDACS PLATE 5.
 - INSTALL 2" GATE VALVE @ BUILDING CONNECTION.
 - INSTALL FIRE HYDRANT PER UDACS PLATE 7.
 - INSTALL 12"x10" REDUCER PER UDACS PLATE 3.
 - INSTALL 8"x8"x6" TEE PER UDACS PLATE 5.
 - INSTALL 2" IRRIGATION LINE WITH 2" RPPA PER UDACS PLATE 11A.
 - INSTALL 1-1/2" GATE VALVE @ BUILDING CONNECTION.
 - INSTALL SANITARY SEWER CLEANOUT. **PER DETAIL A SHT. 5**
 - INSTALL 1" RPPA PER UDACS PLATE 11A.
 - INSTALL 2" BLOW-OFF ASSEMBLY PER UDACS PLATE 4.
 - INSTALL 10"x8" TEE PER UDACS PLATE 5.
 - INSTALL 10" GATE VALVE PER UDACS PLATE 3.
 - INSTALL 6"x3" COMBINATION FIRE & DOMESTIC SERVICE METER PER UDACS PLATE 21D AND 8" RPPA (FBCO 825) PER PLATE 11B.
 - INSTALL BEND AS REQUIRED.
 - INSTALL "NO PARKING" SIGN, R7-1AP/R8-3A
 - PROVIDE 18" MIN VERTICAL SEPARATION BETWEEN SEWER AND WATER LATERAL. SEWER LATERAL TO BE UNDER WATER LATERAL.
 - INSTALL IRRIGATION SLEEVES PER SIS U-18
 - REMOVE EXIST. 8" W LATERAL PER UDACS 2.14.04 B. PAVEMENT CUT IN THIS AREA MUST CONFORM TO SIS U-21.
 - PAINT CURB RED INSTALL "FIRE LANE NO PARKING" SIGN

BENCHMARK

CITY OF LAS VEGAS VERTICAL CONTROL v.6-02
RIVET & PLASTE IN CONCRETE BASE OF STEEL POWER POLE. (X433)

STATION 9LV09
26N6
ELEVATION= 978.178 METERS (NAVD88)
3209.24 FEET

PROJECT BENCHMARK = CLV BM - **274**

BASIS OF BEARINGS

SOUTH 07°28'00" WEST BEING THE CHORD BEARING FROM THE INTERSECTION OF CARRIAGE HILL DRIVE AND FAR HILLS AVENUE TO THE PT ON CARRIAGE HILL DRIVE, 449.72' SOUTH, AS SHOWN ON THE PLAN OF THE VISTAS AT SUMMERLIN VILLAGE 20 UNIT NO. 2, BOOK 98 PAGE 11 IN THE OFFICE OF THE CLARK COUNTY NEVADA RECORDER.

FIRE FLOW DATA

FIRE FLOW REQUIREMENT IS 2500 GALLONS PER MINUTE AT 20 PSI RESIDUAL PRESSURE.

BASED ON:

- SQUARE FOOTAGE: 15,228
- LARGEST AREA BETWEEN 4-HOUR AREA SEPARATION WALLS: N/A
- BUILDING HEIGHT: 23
- NUMBER OF STORIES: 2 STORIES
- TYPE OF CONSTRUCTION: V-One-HR
- OCCUPANCY: R
- FULL AUTOMATIC FIRE SPRINKLER SYSTEM: YES Building Type II only

APPROVAL OF THE FIRE DEPARTMENT HAVING JURISDICTION MUST BE OBTAINED PRIOR TO THE CITY OF LAS VEGAS APPROVING THE FINAL WATER PLAN.

REVIEWED BY: *[Signature]*
DATE: 3/7/03

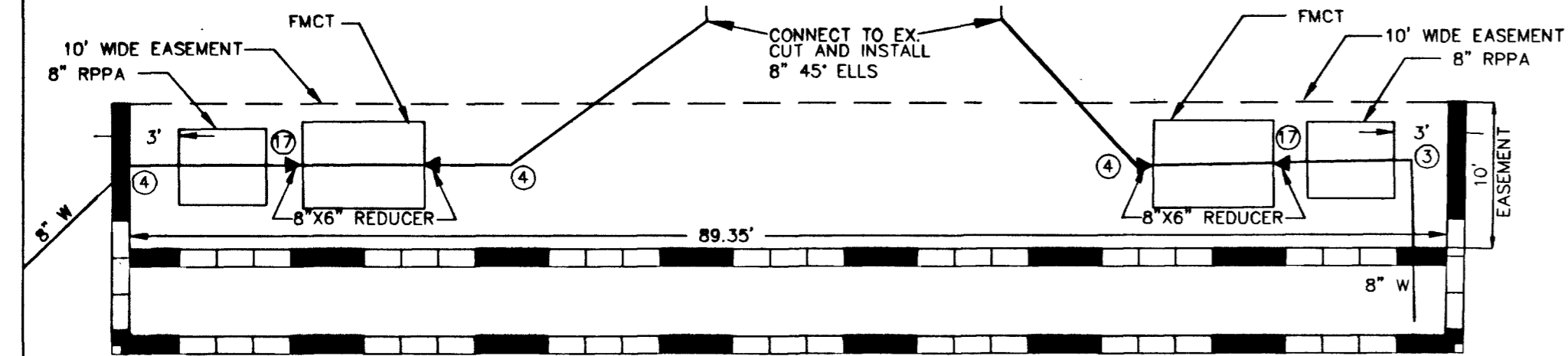
NO.	DATE	BY	APPROVAL	REVISION DESCRIPTION

3610 North Ranch Drive
Las Vegas, Nevada 89130
Telephone: (702) 645-9700
Fac: (702) 645-1143

ENGINEERING
SOUTHWEST
LAND PLANNING • DEVELOPMENT

UTILITY PLAN
PROJECT
ALTESSA AT THE VISTAS
PACIFIC PROPERTIES
CITY OF LAS VEGAS, NEVADA

WORK ORDER NO.	020426
DESIGN BY:	CP
DATE:	01-13-03
SCALE:	1" = 40'
CADFILE:	PPUD
SHEET	6 OF 6 SHEETS
CLV DWG NO.	107-V-3688



SEWER CONTRIBUTION

AVG. 280 UNITS X 250 GPD = 70,000 GPD
70,000 GPD = 0.02 MGD
PEAK FACTOR = 2.9 FROM TABLE C
PEAK FLOW CONTRIBUTION: 0.02 x 2.9 = 0.203 MGD

NOTE

SEE "CLEAN OUT IN PAVED AREAS" DETAIL, SHEET 4 OF 6 FOR CONSTRUCTION OF CLEAN OUTS IN PAVED AREAS.

NOTE

THIS PROPERTY WILL HAVE STATIC WATER PRESSURE IN EXCESS OF 80 PSI. THE UNIFORM PLUMBING CODE REQUIRES THAT INDIVIDUAL, ON-SITE (PRIVATE) PRESSURE REDUCING VALVES BE INSTALLED WHENEVER THE PRESSURE EXCEEDS 80 PSI. PRVs ARE THE DEVELOPER'S RESPONSIBILITY AND WILL NOT BE INSPECTED OR INCLUDED IN THE ACCEPTANCE OF LVVWD FACILITIES.

INSTALLATION OF METERS AND VAULTS (2) 6'X3' FMCT

THE METERS AND VAULTS WITH NON-TRAFFIC BEARING COVER SHALL BE INSTALLED IN ACCORDANCE WITH THE UDACS PLATE NO 21D AND WITH STANDARD VAULT DRAWING C-475, LATEST REVISION.

REDUCED PRESSURE PRINCIPLE ASSEMBLY (2) 8' RPPA

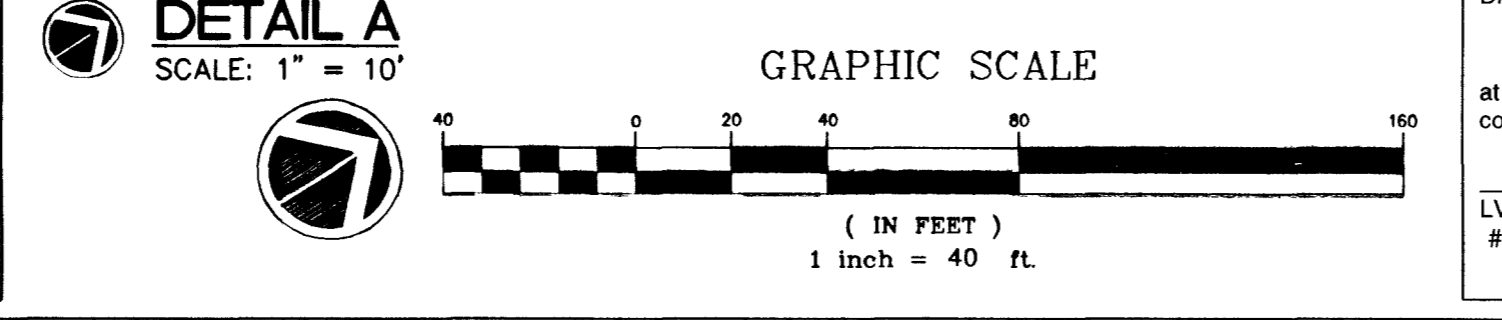
APPROVED REDUCED PRESSURE PRINCIPLE ASSEMBLIES SHALL BE INSTALLED PER THE UDACS PLATE NO. 11B. NO WATER SHALL BE TAKEN FROM A SERVICE REQUIRING BACKFLOW PREVENTION UNTIL THE REDUCED PRESSURE PRINCIPLE ASSEMBLY HAS BEEN SUCCESSFULLY TESTED BY THE LVVWD.

NOTICE TO CONTRACTOR !

EXISTING UTILITY LOCATIONS SHOWN HEREON ARE APPROXIMATE ONLY. IT SHALL BE THE CONTRACTOR'S RESPONSIBILITY TO DETERMINE THE EXACT VERTICAL AND HORIZONTAL LOCATION OF ALL EXISTING UNDERGROUND UTILITIES PRIOR TO COMMENCING CONSTRUCTION. NO REPRESENTATION IS MADE THAT ALL EXISTING UTILITIES ARE SHOWN HEREON. THE ENGINEER ASSUMES NO RESPONSIBILITY FOR UTILITIES NOT SHOWN OR UTILITIES NOT SHOWN IN THEIR PROPER LOCATION.

AVOID CUTTING UNDERGROUND UTILITIES. IT'S COSTLY.
CALL before you Dig
1-800-227-2600
UNDERGROUND SERVICE (USA)

AVOID HITTING OVERHEAD POWER LINES. IT'S COSTLY.
CALL BEFORE YOU DO OVERHEAD
CALL 1-702-593-6111



PROJECT NAME: **ALTESSA AT THE VISTAS**
This project water plan complies with the Las Vegas Valley Water District's technical requirements. However, this water plan is **NOT APPROVED FOR CONSTRUCTION** at this time and this signature does not provide or imply a water commitment.
LVVWD #52
DATE: 3/3/03

ANY BLOCK WALL OR OTHER FENCE MATERIAL SHALL BE DESIGNED AND CONSTRUCTED AROUND THE OUTSIDE OF THE EASEMENTS TO ALLOW THE DISTRICT DIRECT ACCESS TO THE VAULTS FROM THE ADJACENT RIGHT-OF-WAY. EASEMENTS SHALL BE CLEARLY MARKED OR STAKED PRIOR TO THE START OF CONSTRUCTION.