

DATE: 12/21/00

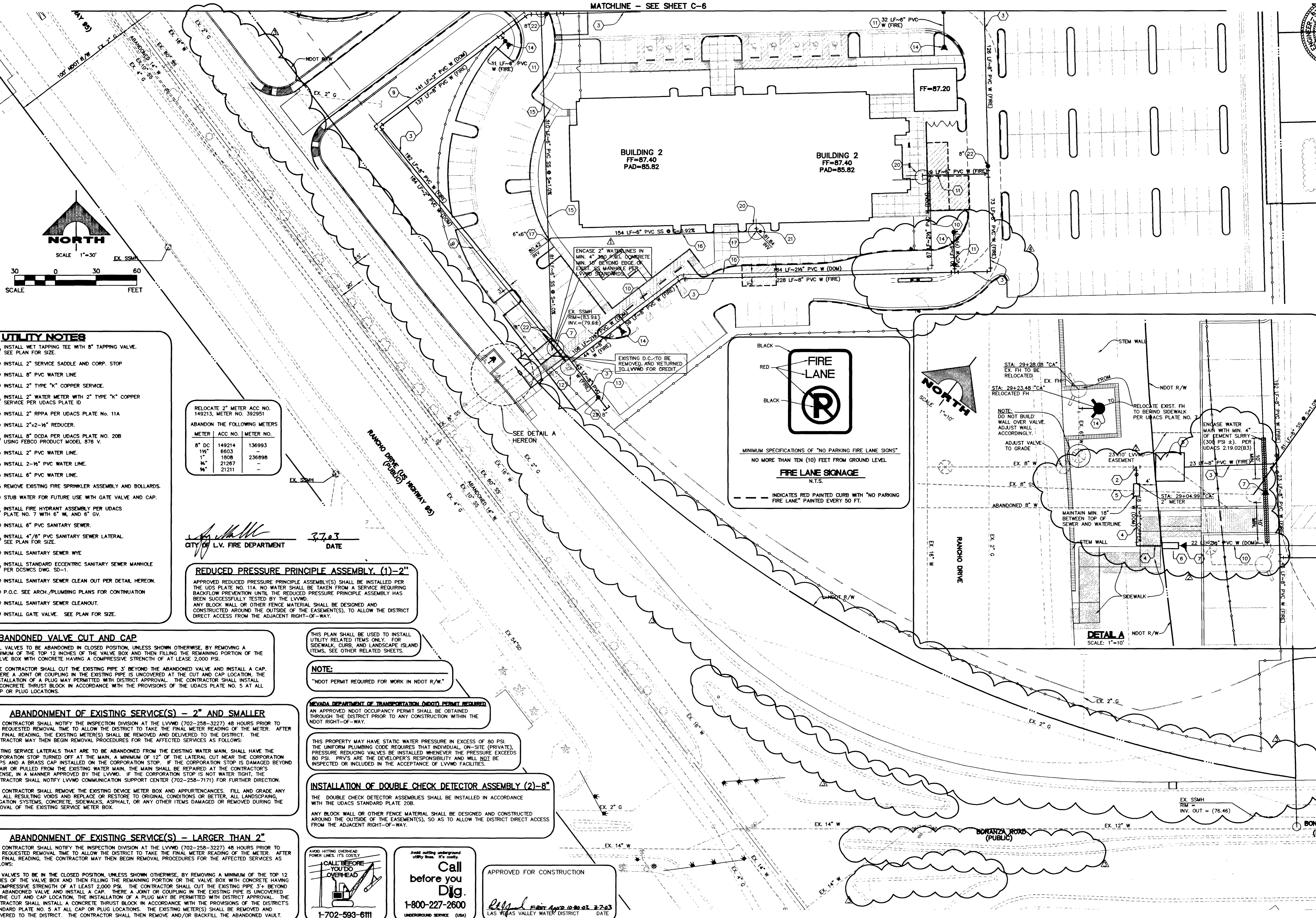
ISSUED FOR 100% CITY DESIGN REVIEW

ISSUE DATE: 07/31/2002

G. C. WALLACE, INC. Engineers/Planners/Surveyors 1555 SOUTH RANCHO BLVD., LAS VEGAS, NEVADA 89146 TELEPHONE: (702) 804-2000 • FAX: (702) 804-2299

COX COMMUNICATIONS JMA ARCHITECTURE UTILITY PLAN I

SHEET C-7



- UTILITY NOTES**
- INSTALL WET TAPPING TEE WITH 8" TAPPING VALVE. SEE PLAN FOR SIZE.
 - INSTALL 2" SERVICE SADDLE AND CORP. STOP.
 - INSTALL 8" PVC WATER LINE.
 - INSTALL 2" TYPE "K" COPPER SERVICE.
 - INSTALL 2" WATER METER WITH 2" TYPE "K" COPPER SERVICE PER UDACS PLATE 10.
 - INSTALL 2" RPPA PER UDACS PLATE No. 11A.
 - INSTALL 2"x2-1/2" REDUCER.
 - INSTALL 8" DCDA PER UDACS PLATE No. 20B USING FEBCO PRODUCT MODEL 876 V.
 - INSTALL 2" PVC WATER LINE.
 - INSTALL 2-1/2" PVC WATER LINE.
 - INSTALL 6" PVC WATER LINE.
 - REMOVE EXISTING FIRE SPRINKLER ASSEMBLY AND BOLLARDS.
 - STUB WATER FOR FUTURE USE WITH GATE VALVE AND CAP.
 - INSTALL FIRE HYDRANT ASSEMBLY PER UDACS PLATE No. 7 WITH 6" WL AND 6" GV.
 - INSTALL 6" PVC SANITARY SEWER.
 - INSTALL 4"/8" PVC SANITARY SEWER LATERAL. SEE PLAN FOR SIZE.
 - INSTALL SANITARY SEWER WYE.
 - INSTALL STANDARD ECCENTRIC SANITARY SEWER MANHOLE PER DCSWCS DWG. SD-1.
 - INSTALL SANITARY SEWER CLEAN OUT PER DETAIL HEREON.
 - P.O.C. SEE ARCH./PLUMBING PLANS FOR CONTINUATION.
 - INSTALL SANITARY SEWER CLEANOUT.
 - INSTALL GATE VALVE. SEE PLAN FOR SIZE.

RELOCATE 2" METER ACC. NO. 149213, METER NO. 392951

ABANDON THE FOLLOWING METERS

METER	ACC. NO.	METER NO.
8" DC	149214	136993
1 1/2"	6603	-
1"	1808	236898
3/4"	21287	-
3/4"	21211	-

CITY OF L.V. FIRE DEPARTMENT DATE: 3.7.03

REDUCED PRESSURE PRINCIPLE ASSEMBLY (1)-2"

APPROVED REDUCED PRESSURE PRINCIPLE ASSEMBLY(S) SHALL BE INSTALLED PER THE UDS PLATE NO. 11A. NO WATER SHALL BE TAKEN FROM A SERVICE REQUIRING BACKFLOW PREVENTION UNTIL THE REDUCED PRESSURE PRINCIPLE ASSEMBLY HAS BEEN SUCCESSFULLY TESTED BY THE LVWD.

ANY BLOCK WALL OR OTHER FENCE MATERIAL SHALL BE DESIGNED AND CONSTRUCTED AROUND THE OUTSIDE OF THE EASEMENT(S), TO ALLOW THE DISTRICT DIRECT ACCESS FROM THE ADJACENT RIGHT-OF-WAY.

ABANDONED VALVE CUT AND CAP

ALL VALVES TO BE ABANDONED IN CLOSED POSITION, UNLESS SHOWN OTHERWISE, BY REMOVING A MINIMUM OF THE TOP 12 INCHES OF THE VALVE BOX AND THEN FILLING THE REMAINING PORTION OF THE VALVE BOX WITH CONCRETE HAVING A COMPRESSIVE STRENGTH OF AT LEAST 2,000 PSI.

THE CONTRACTOR SHALL CUT THE EXISTING PIPE 3' BEYOND THE ABANDONED VALVE AND INSTALL A CAP WHERE A JOINT OR COUPLING IN THE EXISTING PIPE IS UNCOVERED AT THE CUT AND CAP LOCATION. THE INSTALLATION OF A PLUG MAY BE PERMITTED WITH DISTRICT APPROVAL. THE CONTRACTOR SHALL INSTALL A CONCRETE THRUST BLOCK IN ACCORDANCE WITH THE PROVISIONS OF THE UDACS PLATE NO. 5 AT ALL CAP OR PLUG LOCATIONS.

ABANDONMENT OF EXISTING SERVICE(S) - 2" AND SMALLER

THE CONTRACTOR SHALL NOTIFY THE INSPECTION DIVISION AT THE LVWD (702-258-3227) 48 HOURS PRIOR TO THE REQUESTED REMOVAL TIME TO ALLOW THE DISTRICT TO TAKE THE FINAL METER READING OF THE METER. AFTER THE FINAL READING, THE EXISTING METER(S) SHALL BE REMOVED AND DELIVERED TO THE DISTRICT. THE CONTRACTOR MAY THEN BEGIN REMOVAL PROCEDURES FOR THE AFFECTED SERVICES AS FOLLOWS:

EXISTING SERVICE LATERALS THAT ARE TO BE ABANDONED FROM THE EXISTING WATER MAIN, SHALL HAVE THE CORPORATION STOP TURNED OFF AT THE MAIN, A MINIMUM OF 12" OF THE LATERAL CUT NEAR THE CORPORATION STOP AND A BRASS CAP INSTALLED ON THE CORPORATION STOP. IF THE CORPORATION STOP IS DAMAGED BEYOND REPAIR OR PULLED FROM THE EXISTING WATER MAIN, THE MAIN SHALL BE REPAIRED AT THE CONTRACTOR'S EXPENSE, IN A MANNER APPROVED BY THE LVWD. IF THE CORPORATION STOP IS NOT WATER TIGHT, THE CONTRACTOR SHALL NOTIFY LVWD COMMUNICATION SUPPORT CENTER (702-258-7171) FOR FURTHER DIRECTION.

THE CONTRACTOR SHALL REMOVE THE EXISTING DEVICE METER BOX AND APPURTENANCES. FILL AND GRADE ANY AND ALL RESULTING VOIDS AND REPLACE OR RESTORE TO ORIGINAL CONDITIONS OR BETTER. ALL LANDSCAPING, IRRIGATION SYSTEMS, CONCRETE, SIDEWALKS, ASPHALT, OR ANY OTHER ITEMS DAMAGED OR REMOVED DURING THE REMOVAL OF THE EXISTING SERVICE METER BOX.

ABANDONMENT OF EXISTING SERVICE(S) - LARGER THAN 2"

THE CONTRACTOR SHALL NOTIFY THE INSPECTION DIVISION AT THE LVWD (702-258-3227) 48 HOURS PRIOR TO THE REQUESTED REMOVAL TIME TO ALLOW THE DISTRICT TO TAKE THE FINAL METER READING OF THE METER. AFTER THE FINAL READING, THE CONTRACTOR MAY THEN BEGIN REMOVAL PROCEDURES FOR THE AFFECTED SERVICES AS FOLLOWS:

ALL VALVES TO BE IN THE CLOSED POSITION, UNLESS SHOWN OTHERWISE, BY REMOVING A MINIMUM OF THE TOP 12 INCHES OF THE VALVE BOX AND THEN FILLING THE REMAINING PORTION OF THE VALVE BOX WITH CONCRETE HAVING A COMPRESSIVE STRENGTH OF AT LEAST 2,000 PSI. THE CONTRACTOR SHALL CUT THE EXISTING PIPE 3' BEYOND THE ABANDONED VALVE AND INSTALL A CAP. WHERE A JOINT OR COUPLING IN THE EXISTING PIPE IS UNCOVERED AT THE CUT AND CAP LOCATION, THE INSTALLATION OF A PLUG MAY BE PERMITTED WITH DISTRICT APPROVAL. THE CONTRACTOR SHALL INSTALL A CONCRETE THRUST BLOCK IN ACCORDANCE WITH THE PROVISIONS OF THE DISTRICT'S STANDARD PLATE NO. 5 AT ALL CAP OR PLUG LOCATIONS. THE EXISTING METER(S) SHALL BE REMOVED AND DELIVERED TO THE DISTRICT. THE CONTRACTOR SHALL THEN REMOVE AND/OR BACKFILL THE ABANDONED VAULT.

THIS PLAN SHALL BE USED TO INSTALL UTILITY RELATED ITEMS ONLY. FOR SIDEWALK, CURB, AND LANDSCAPE ISLAND ITEMS, SEE OTHER RELATED SHEETS.

NOTE:

"NDOT PERMIT REQUIRED FOR WORK IN NDOT R/W."

NEVADA DEPARTMENT OF TRANSPORTATION (NDOT) PERMIT REQUIRED

AN APPROVED NDOT OCCUPANCY PERMIT SHALL BE OBTAINED THROUGH THE DISTRICT PRIOR TO ANY CONSTRUCTION WITHIN THE NDOT RIGHT-OF-WAY.

THIS PROPERTY MAY HAVE STATIC WATER PRESSURE IN EXCESS OF 80 PSI. THE UNIFORM PLUMBING CODE REQUIRES THAT INDIVIDUAL, ON-SITE (PRIVATE), PRESSURE REDUCING VALVES BE INSTALLED WHENEVER THE PRESSURE EXCEEDS 80 PSI. PRV'S ARE THE DEVELOPER'S RESPONSIBILITY AND WILL NOT BE INSPECTED OR INCLUDED IN THE ACCEPTANCE OF LVWD FACILITIES.

INSTALLATION OF DOUBLE CHECK DETECTOR ASSEMBLY (2)-8"

THE DOUBLE CHECK DETECTOR ASSEMBLIES SHALL BE INSTALLED IN ACCORDANCE WITH THE UDACS STANDARD PLATE 20B.

ANY BLOCK WALL OR OTHER FENCE MATERIAL SHALL BE DESIGNED AND CONSTRUCTED AROUND THE OUTSIDE OF THE EASEMENT(S), SO AS TO ALLOW THE DISTRICT DIRECT ACCESS FROM THE ADJACENT RIGHT-OF-WAY.



Avoid cutting underground utility lines. It's costly.

Call before you Dig.

1-800-227-2600

UNDERGROUND SERVICE (USA)

APPROVED FOR CONSTRUCTION

Richard F. Pitt DATE: 02.02.03

LAS VEGAS VALLEY WATER DISTRICT

