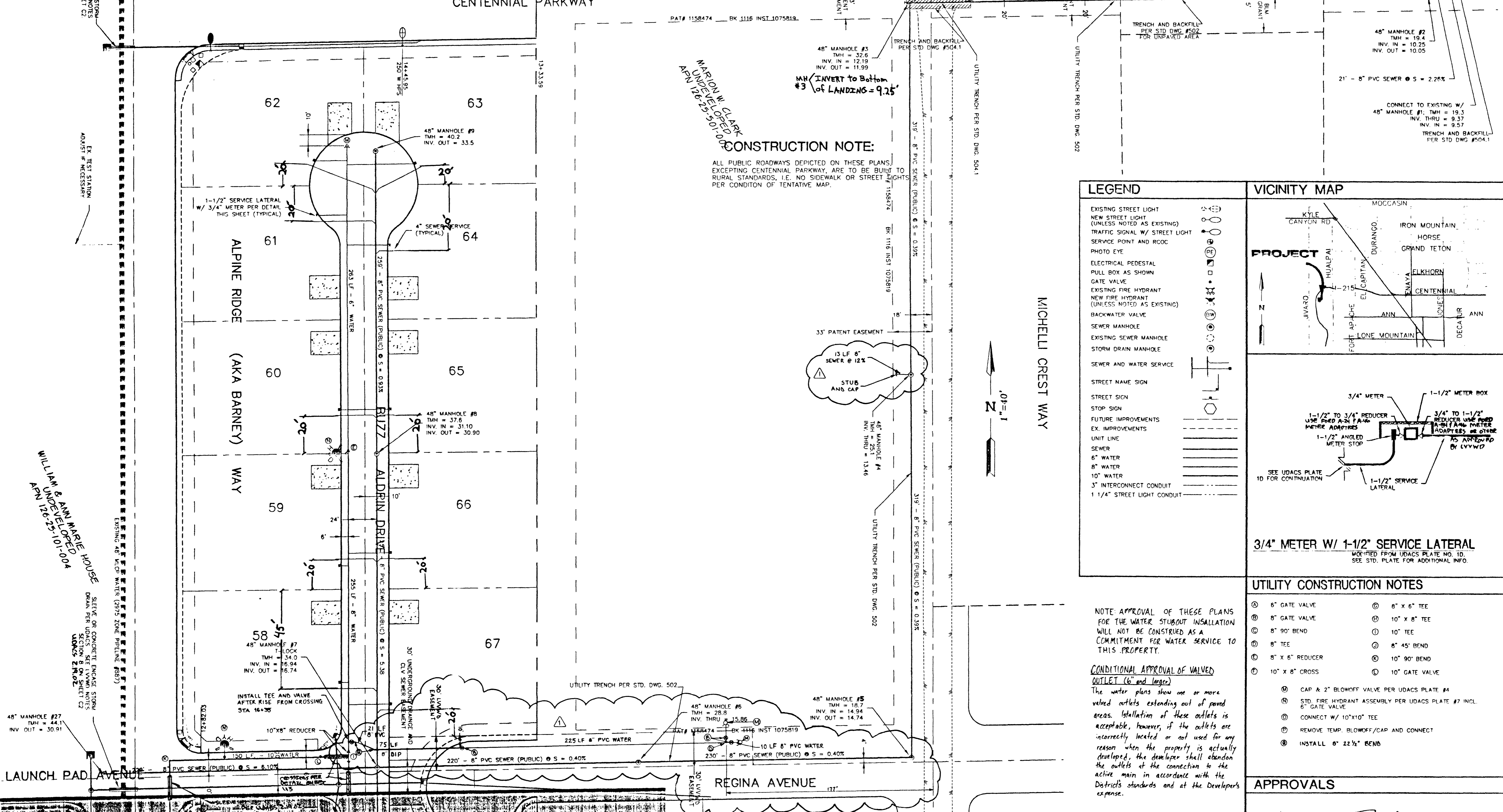


MARION W. CLARK  
UNDEVELOPED  
APN 126-24-1010-006

3A DEVELOPED  
16-24-801-001  
VAULT STRUCTURE  
ADJUST AS NEEDED

APN 126-24-801-002

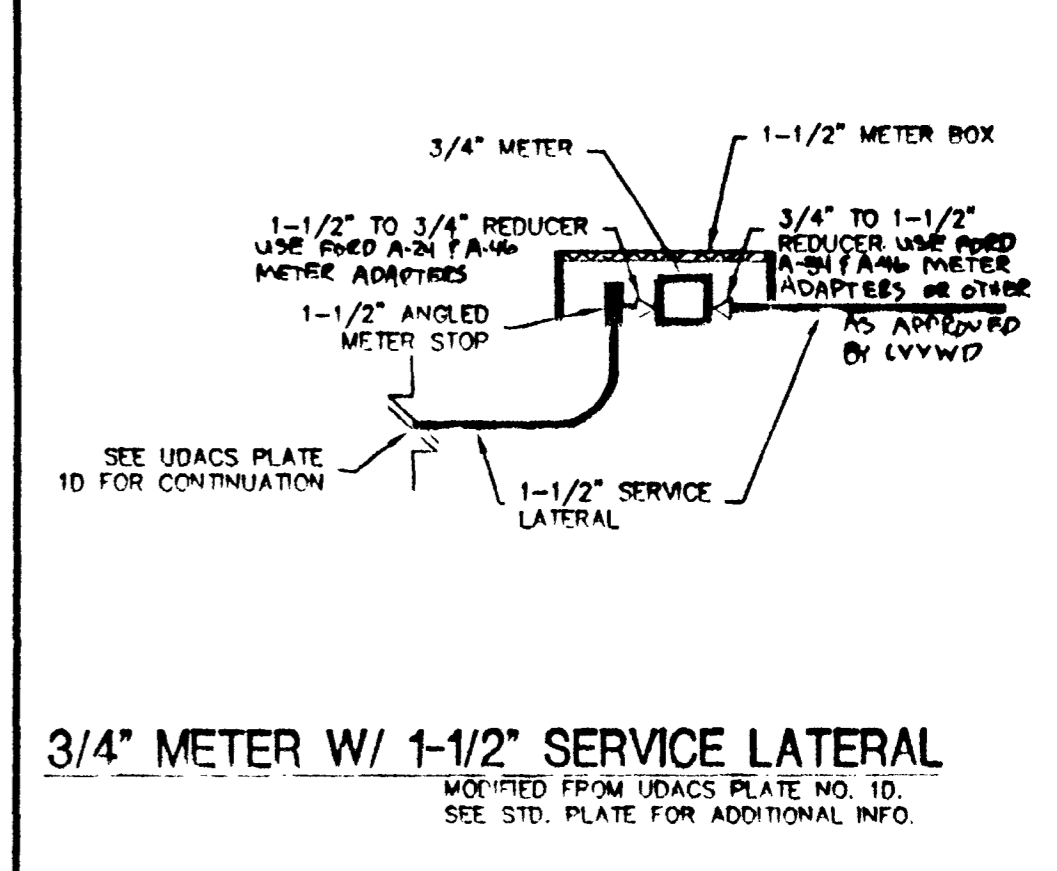
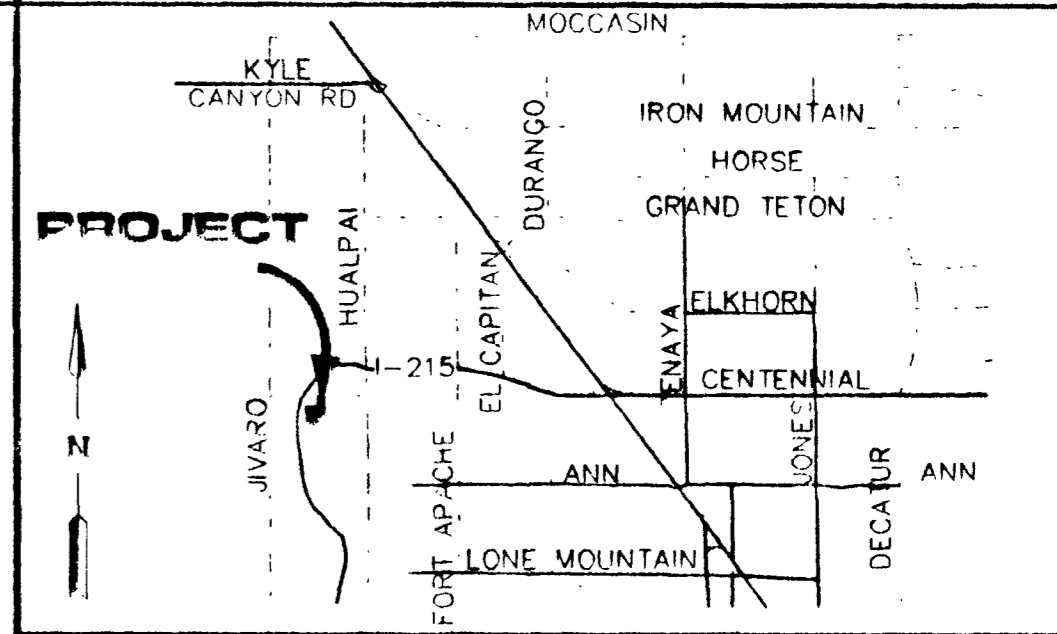


**CONSTRUCTION NOTE:**  
ALL PUBLIC ROADWAYS DEPICTED ON THESE PLANS, EXCEPTING CENTENNIAL PARKWAY, ARE TO BE BUILT TO RURAL STANDARDS, I.E. NO SIDEWALK OR STREET LIGHTS PER CONDITION OF TENTATIVE MAP.

**LEGEND**

- EXISTING STREET LIGHT
- NEW STREET LIGHT (UNLESS NOTED AS EXISTING)
- TRAFFIC SIGNAL W/ STREET LIGHT
- SERVICE POINT AND RCOG
- PHOTO EYE
- ELECTRICAL PEDESTAL
- PULL BOX AS SHOWN
- GATE VALVE
- EXISTING FIRE HYDRANT
- NEW FIRE HYDRANT (UNLESS NOTED AS EXISTING)
- BACKWATER VALVE
- SEWER MANHOLE
- EXISTING SEWER MANHOLE
- STORM DRAIN MANHOLE
- SEWER AND WATER SERVICE
- STREET NAME SIGN
- STOP SIGN
- FUTURE IMPROVEMENTS
- EX. IMPROVEMENTS
- UNIT LINE
- SEWER
- 6" WATER
- 8" WATER
- 10" WATER
- 3" INTERCONNECT CONDUIT
- 1 1/4" STREET LIGHT CONDUIT

**VICINITY MAP**



**UTILITY CONSTRUCTION NOTES**

- Ⓐ 6" GATE VALVE
- Ⓑ 8" GATE VALVE
- Ⓒ 8" 90° BEND
- Ⓓ 8" TEE
- Ⓔ 8" x 6" REDUCER
- Ⓕ 10" x 8" CROSS
- Ⓖ 8" x 6" TEE
- Ⓗ 10" x 8" TEE
- Ⓘ 10" TEE
- Ⓚ 6" 45° BEND
- Ⓛ 10" 90° BEND
- Ⓜ 10" GATE VALVE
- Ⓝ CAP & 2" BLOWOFF VALVE PER UDACS PLATE #4
- Ⓞ STD. FIRE HYDRANT ASSEMBLY PER UDACS PLATE #7 INCL. 6" GATE VALVE
- Ⓟ CONNECT W/ 10"x10" TEE
- Ⓠ REMOVE TEMP. BLOWOFF/CAP AND CONNECT
- Ⓡ INSTALL 6" 22 1/2" BEND

**NOTE APPROVAL OF THESE PLANS FOR THE WATER STUBOUT INSTALLATION WILL NOT BE CONSTRUED AS A COMMITMENT FOR WATER SERVICE TO THIS PROPERTY.**

**CONDITIONAL APPROVAL OF VALVED OUTLET (6" and larger)**  
The water plans show one or more valved outlets extending out of paved areas. Installation of these outlets is acceptable, however, if the outlets are incorrectly located or not used for any reason when the property is actually developed, the developer shall abandon the outlets at the connection to the active main in accordance with the District's standards and at the Developer's expense.

**APPROVALS**

Las Vegas Valley Water District  
Nevada Power Company  
Clark County Fire Department

**D.R. HORTON INC.**  
6845 ESCONDIDO, BUILD 6, SUITE 105  
LAS VEGAS, NEVADA 89119  
(702) 435-4688

**ALPHA & ENGINEERING COMPANY**  
50 So. Jones #202, Las Vegas, NV, 89107  
(702) 877-1300

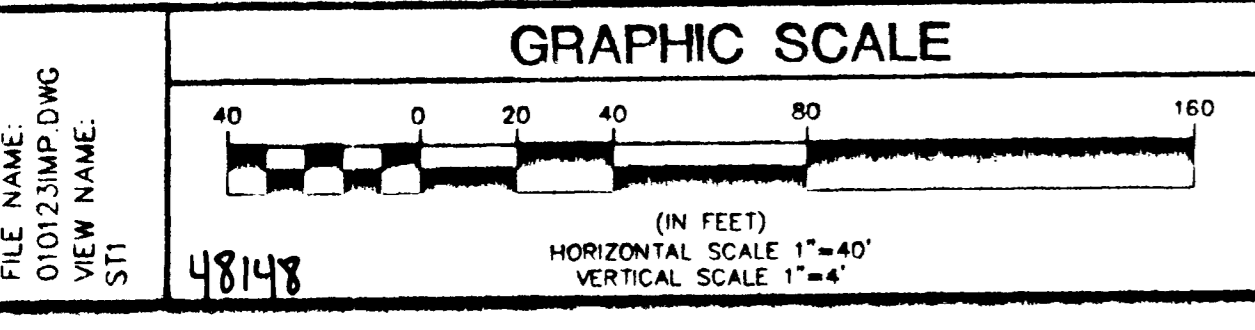
**CONSTITUTION ESTATES**

**MASTER UTILITY PLAN**  
SEWER AS-BUILT

DESIGNED BY:	12-18-00
CHECKED BY:	1-20-2001
PROJECT NO.:	010123
SCALE:	1"=40'

**APPROVALS**

Professional Engineer Seal  
Evan  
11/05/01  
DATE



**BASIS OF BEARINGS**  
THE BASIS OF BEARINGS FOR THIS SURVEY IS THE WEST LINE OF THE NORTHWEST ONE-QUARTER OF SECTION 25, TOWNSHIP 19 SOUTH, RANGE 59 EAST, M.D.M. WHICH BEARS NORTH 00°37'29" WEST AS SHOWN BY MAP IN THE OFFICE OF THE CLARK COUNTY, NEVADA RECORDER IN FILE 104 OF SURVEYS ON PAGE 74.

**BENCHMARK**  
CLARK COUNTY BENCHMARK 10992555W6 - RIVET AND SQUARE ALUMINUM PLATE IN THE NE CORNER OF A CONCRETE BASE FOR A LARGE POWER POLE (#40-8) AT THE WEST END OF ANN ROAD.  
2888.515 FT (880.421 METERS) NAVD 88

**COUNTY OF CLARK FIRE DEPARTMENT APPROVED**

BY: \_\_\_\_\_ DATE \_\_\_\_\_  
APPROVAL OF THESE PLANS SHALL NOT BE CONSTRUED TO BE A PERMIT FOR, OR AN APPROVAL OF, ANY VIOLATION OF ANY OF THE PROVISIONS OF THE STATE OR COUNTY LAWS. FIRE FLOW: 1500 GPM AT 20 P.S.I. RESIDUAL.

**NOTICE**  
CONTRACTORS AND OTHERS SHALL BE RESPONSIBLE FOR VERIFYING THE LOCATION AND DEPTH OF ALL UTILITIES PRIOR TO ANY CONSTRUCTION.  
CALL BEFORE YOU DIG  
1-800-277-2000

FILE NAME: 010123IMP.DWG  
VIEW NAME: S11  
48148

SHEET 1  
7 OF 28 SHEETS  
DRAWING NO. HTE-01-0409