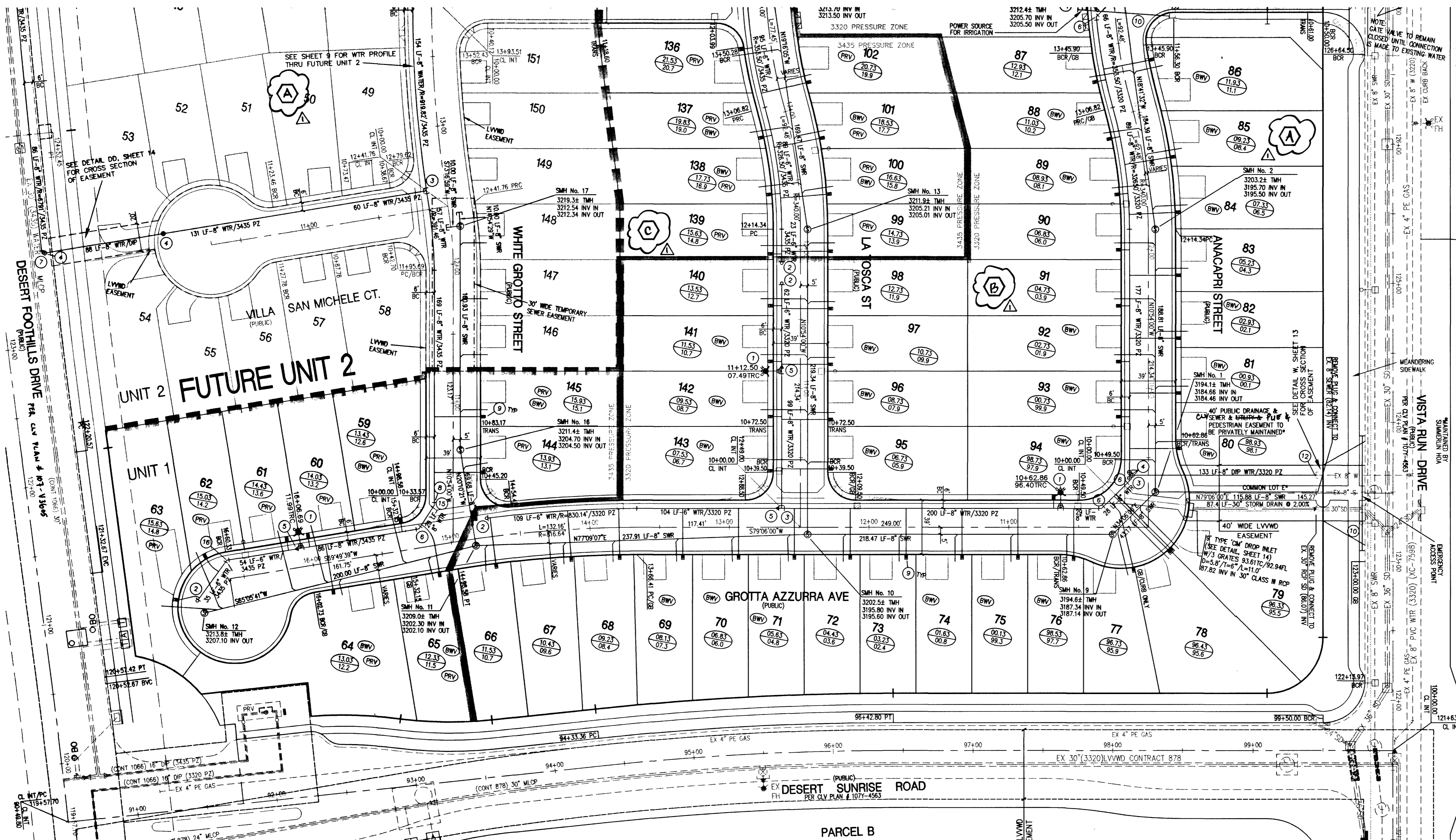


MATCHLINE (SEE SHEET 11)



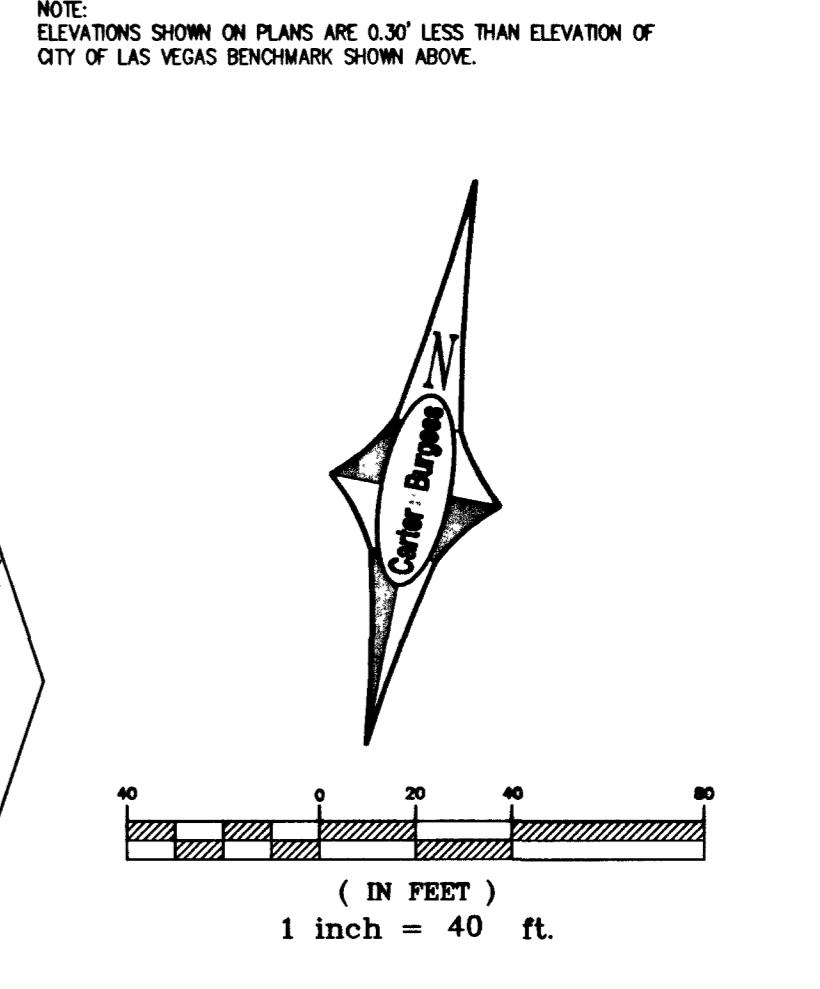
CONTRACTOR SHALL FIELD LOCATE AND PROTECT ALL LVWD APPURTENANCES INCLUDING, BUT NOT LIMITED TO AV/AR, ACCESS MAINWAYS AND CATHODIC PROTECTION SYSTEMS. ALL ABOVE GROUND STRUCTURES AND AT GRADE STRUCTURES MUST BE ADJUSTED TO NEW GRADE AT CONTRACTOR'S EXPENSE. CATHODIC PROTECTION TEST STATIONS MUST BE RELOCATED TO THE SIDEWALK PER LVWD STANDARDS AT THE CONTRACTOR'S EXPENSE. (SEE DETAIL DC SHEET 14)

LEGAL DESCRIPTION
THE VISTAS AT SUMMERLIN VILLAGE 20 UNIT No. 1, BEING A SUBDIVISION OF A PORTION OF PARCEL 1 AS SHOWN BY MAP THEREON ON FILE IN FILE # 91, PAGE 28 OF PARCEL MAPS IN THE CLARK COUNTY RECORDER'S OFFICE.

BASIS OF BEARING
NORTH 89° 54' 38" EAST BEING THE SOUTH LINE OF THE SOUTHEAST QUARTER OF SECTION 35, T 20 S, R 59 E, M.D.M., AS SHOWN BY THE AMENDED MAP ON FILE IN FILE # 93, PAGE 95 OF SURVEYS, IN THE CLARK COUNTY RECORDER'S OFFICE.

BENCHMARK
CITY OF LAS VEGAS BENCHMARK 04V09 30MMX30MM RIVET & PLATE IN TOP OF CURB RETURN @ NW CORNER OF PAVILION CENTER & ALTA, 3024.26' NAVD 1988 DATUM

NOTE:
ELEVATIONS SHOWN ON PLANS ARE 0.30' LESS THAN ELEVATION OF CITY OF LAS VEGAS BENCHMARK SHOWN ABOVE.



NOTE
SEE SHEET 8 FOR MANHOLE SCHEDULE

HEALTH DISTRICT NOTE
INSTALL SEWER/WATER LATERALS PER UDACS 2.19.03

SEWER CONTRIBUTION
75 LOTS
AVERAGE DAILY FLOW (75 x 250) / 1M = 0.01875 MGD
PEAK DAILY FLOW PF = 3.5 x 0.01875 = 0.0656 MGD

BACKWATER VALVES (BWV)
THE FOLLOWING LOTS REQUIRE SEWER BACKWATER VALVES.
LOTS : 1-2, 5, 59, 65, 69-71, 74-76, 80-82, 84-86
88-89, 92-98, 100-101, 103-104, 112-113, 131, 134-135, 137-138, 141-145.

- WATER CONSTRUCTION NOTES**
- 1 FIRE HYDRANT ASSEMBLY PER UDACS PLATE 7 (INCLUDES TEE AND GATE VALVE)
 - 2 INSTALL 6" CAP & 2" BLOW OFF ASSEMBLY PER UDACS PLATE 4
 - 3 8" x 8" TEE PER UDACS PLATE 5
 - 4 8" GATE VALVE
 - 5 8" x 6" REDUCER
 - 6 8" 45° ELBOW PER UDACS PLATE 5
 - 7 8" - 90° ELBOW PER UDACS PLATE 5
 - 8 8" - 11-1/4" ELBOW PER UDACS PLATE 5
 - 9 1" WATER SERVICE WITH 3/4" METER PER UDACS PLATE No 18.
 - 10 IRRIGATION AND POWER CONDUIT, 2-4" & 1-6" SCH. 40 PVC CONDUIT
 - 11 1" WATER SERVICE WITH 1" METER AND 1" RPPA PER UDACS PLATES 1D & 11A.
 - 12 REMOVE CAP & BLOWOFF; CONNECT TO EXISTING 8" DUCTILE IRON (DIP) STUB
 - 13 INSTALL 8" CAP & 2" BLOW OFF ASSEMBLY PER UDACS PLATE 4
 - 14 REMOVE CAP & BLOWOFF; CONNECT TO EXISTING 8" PVC STUB
 - 15 8" - 22-1/2" ELBOW PER UDACS PLATE 5
 - 16 6" 45° ELBOW PER UDACS PLATE 5
 - 17 INSTALL 8" MECHANICAL JOINT TAPPING TEE W/ 8" TAPPING VALVE

THE DISTRICT WILL NOT GUARANTEE A WATER-TIGHT SHUTDOWN WHERE CONNECTIONS OR REPAIRS TO EXISTING FACILITIES ARE REQUIRED. THE CONTRACTOR SHALL ENSURE ALL LABOR AND EQUIPMENT IS AVAILABLE AT ALL TIMES TO REMOVE FUGITIVE WATER WHICH IMPEDES THE CONTRACTOR'S PERFORMANCE. CONTRACTOR TO INSTALL TEMPORARY SERVICE TO ENSURE PROPER SHUTDOWN IN THE EVENT NO OTHER APPURTENANCES ARE AVAILABLE.

PRV NOTE: (PRV) LOTS: 59-65, 99-113, 136-139, 144 & 145
THIS PROPERTY MAY HAVE STATIC WATER PRESSURE IN EXCESS OF 80 PSI. THE UNIFORM PLUMBING CODE REQUIRES THAT INDIVIDUAL, ON-SITE (PRIVATE), PRESSURE REDUCING VALVES BE INSTALLED WHENEVER THE PRESSURE EXCEEDS 80 PSI. PRV'S ARE THE DEVELOPER'S RESPONSIBILITY AND WILL NOT BE INSPECTED OR INCLUDED IN THE ACCEPTANCE OF LVWD FACILITIES.

REDUCED PRESSURE PRINCIPLE ASSEMBLY (1) T
APPROVED REDUCED PRESSURE PRINCIPLE ASSEMBLY(S) SHALL BE INSTALLED PER THE UDACS PLATE NO. 11A. NO WATER SHALL BE TAKEN FROM A SERVICE REQUIRING BACKFLOW PREVENTION UNTIL THE REDUCED PRESSURE PRINCIPLE ASSEMBLY HAS BEEN SUCCESSFULLY TESTED BY THE LVWD.

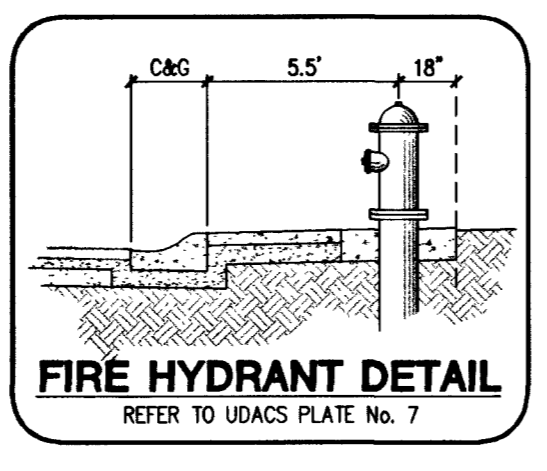
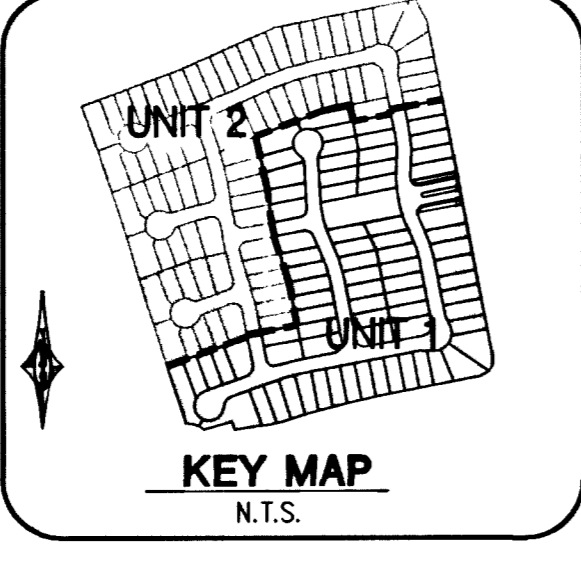
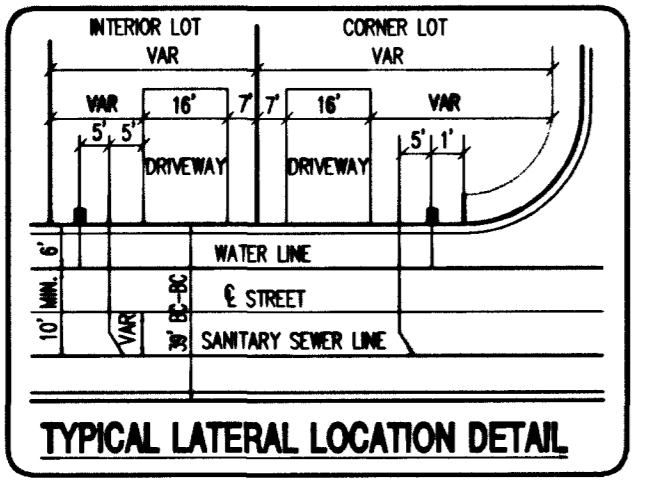
ANY BLOCK WALL OR OTHER FENCE MATERIAL SHALL BE DESIGNED AND CONSTRUCTED AROUND THE OUTSIDE OF THE EASEMENT(S) TO ALLOW THE DISTRICT DIRECT ACCESS FROM THE ADJACENT RIGHT-OF-WAY.

WATER NOTE:
INSTALL PIPELINE MARKER BALLS IN TRENCH ABOVE EACH HORIZONTAL ELBOW FITTING, PER MANUFACTURER INSTRUCTIONS.
SERVICE LATERALS FOR LOTS 1, 134, 135 & 1" IRRIGATION METER (MINI-PARK) ON ANACAPI STREET WILL BE TAPPED ON EXISTING MAIN BY OWNER'S CONTRACTOR UNDER DIRECTION OF THE LVWD.

FIRE FLOW CALCULATIONS
FIRE FLOW REQUIREMENT IS 1500 GALLONS PER MINUTE AT 20 PSI RESIDUAL PRESSURE.
BASED ON:
SQUARE FOOTAGE: $\leq 3,600$ SQUARE FEET
LARGEST AREA BETWEEN 4-HOUR: N/A SQUARE FEET
AREA SEPARATION WALLS: N/A SQUARE FEET
BUILDING HEIGHT: 20 FEET
NUMBER OF STORIES: 2 FLOORS
TYPE OF CONSTRUCTION: TYPE V-NR
OCCUPANCY: RESIDENTIAL
FULL AUTOMATIC FIRE SPRINKLER SYSTEM: YES NO
REVIEWED BY: *Steve* DATE: 10/16/02
LAS VEGAS FIRE DEPT

APPROVALS
APPROVAL OF THESE PLANS SHALL NOT BE CONSTRUED TO BE A PERMIT FOR OR AN APPROVAL OF ANY VIOLATION OF ANY OF THE PROVISIONS OF THE STATE OR COUNTY LAWS. 1500 GPM 20 PSI.
Robert Bell 10-10-02
CLV FIRE DEPARTMENT DATE
Nao Stalla 10/15/02
LAS VEGAS VALLEY WATER DISTRICT DATE

DISCLAIMER NOTE
UTILITY LOCATIONS SHOWN HEREON ARE APPROXIMATE ONLY. IT SHALL BE THE CONTRACTOR'S RESPONSIBILITY TO DETERMINE THE EXACT HORIZONTAL AND VERTICAL LOCATION OF ALL EXISTING UNDERGROUND OR OVERHEAD UTILITIES PRIOR TO COMMENCING CONSTRUCTION. NO REPRESENTATION IS MADE THAT ALL EXISTING UTILITIES ARE SHOWN HEREON. THE ENGINEER ASSUMES NO RESPONSIBILITY FOR UTILITIES NOT SHOWN OR UTILITIES NOT SHOWN IN THEIR PROPER LOCATION.
CONTRACTOR TO NOTIFY ENGINEER OF ANY CHANGES OR DISCREPANCIES.
Avoid cutting underground utility lines. It's costly.
Call before you Dig
1-800-227-2600
UNDERGROUND SERVICE (USA)
Avoid overhead power line contact.
Call before you Overhead
1-702-593-6111
UTILITY SERVICES DEPARTMENT
OR SAFETY SERVICES DIVISION



750 Pilot Road, Suite F
Las Vegas, Nevada 89119
(702) 614-2500

6655 Bermuda Road
Las Vegas, NV 89119
(702) 938-5400 Fax: (702) 938-5454

KBHOME

Carter Burgess
Consultants in Planning, Engineering,
Construction Management, and Real Estate Services

UTILITY PLAN
SHEET 1 OF 2

CAPRI - UNIT 1 • THE VISTAS
PARCEL Y • SUMMERLIN V-20

SCALE: 1" = 40' N/A
PROJECT NO: 240540
SHEET 10
10 OF 14 SHEETS
CLV DRAWING NO. 3074-4729-1