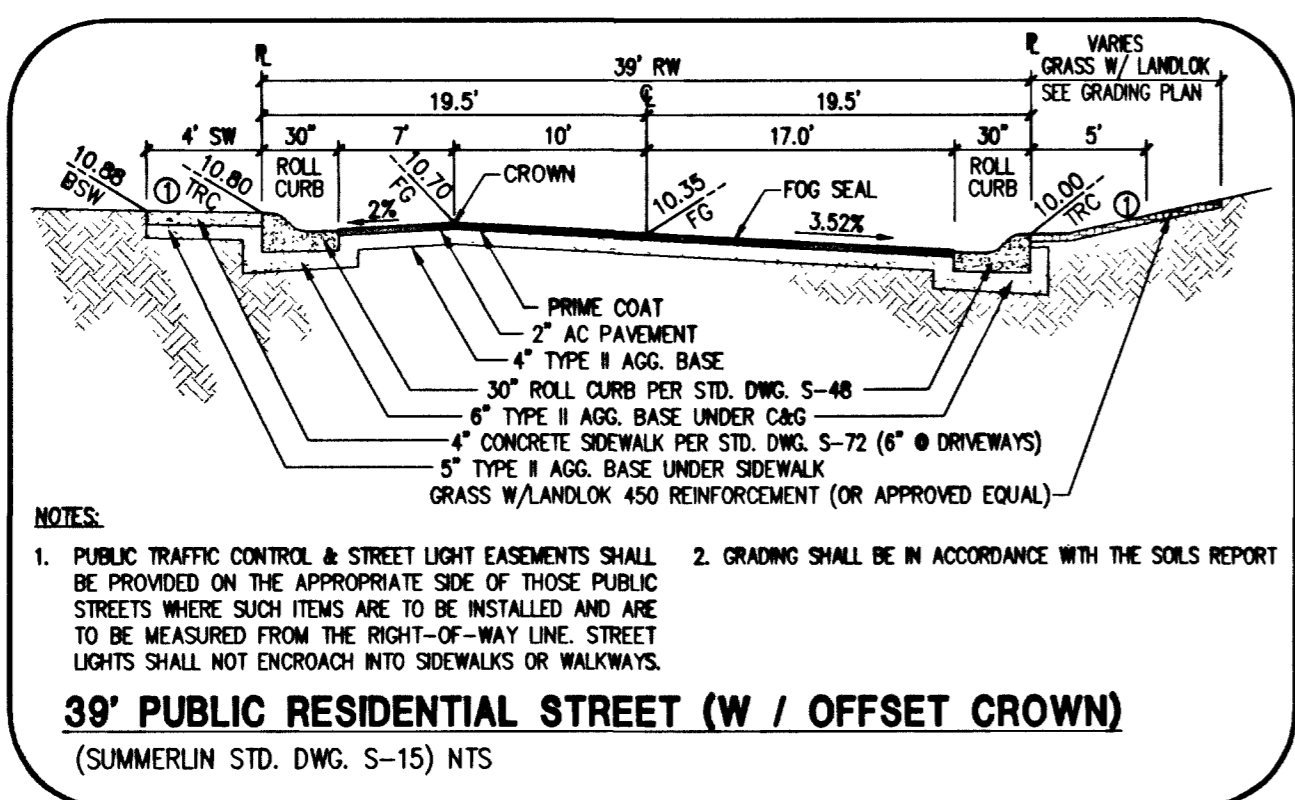


DISCLAIMER NOTE:
 UTILITY LOCATIONS SHOWN HEREON ARE APPROXIMATE ONLY. IT SHALL BE THE CONTRACTOR'S RESPONSIBILITY TO DETERMINE THE EXACT HORIZONTAL AND VERTICAL LOCATION OF ALL EXISTING UNDERGROUND OR OVERHEAD UTILITIES PRIOR TO COMMENCING CONSTRUCTION. NO REPRESENTATION IS MADE THAT ALL EXISTING UTILITIES ARE SHOWN HEREON. THE ENGINEER ASSUMES NO RESPONSIBILITY FOR UTILITIES NOT SHOWN OR UTILITIES NOT SHOWN IN THEIR PROPER LOCATION. CONTRACTOR TO NOTIFY ENGINEER OF ANY CHANGES OR DISCREPANCIES.

Avoid cutting underground utility lines. If a conflict, Call before you Dig 1-800-227-2600 UNDERGROUND SERVICE (USA)

Avoid overhead power line contact. Call before you Overhead 1-702-593-6111 NEVADA POWER DEPARTMENT AND SAFETY SERVICES DEPARTMENT



NOTES:
 1. PUBLIC TRAFFIC CONTROL & STREET LIGHT EASEMENTS SHALL BE PROVIDED ON THE APPROPRIATE SIDE OF THOSE PUBLIC STREETS WHERE SUCH ITEMS ARE TO BE INSTALLED AND ARE TO BE MEASURED FROM THE RIGHT-OF-WAY LINE. STREET LIGHTS SHALL NOT ENCRUCH INTO SIDEWALKS OR WALKWAYS.
 2. GRADING SHALL BE IN ACCORDANCE WITH THE SOILS REPORT

39' PUBLIC RESIDENTIAL STREET (W / OFFSET CROWN)
 (SUMMERLIN STD. DWG. S-15) NTS

LEGAL DESCRIPTION
 THE METAS AT SUMMERLIN VILLAGE 20 UNIT No. 1, BEING A SUBDIVISION OF A PORTION OF PARCEL 1 AS SHOWN BY MAP THEREON IN FILE IN FILE 91, PAGE 28 OF PARCEL MAPS IN THE CLARK COUNTY RECORDER'S OFFICE.

BASIS OF BEARING
 NORTH 89° 54' 38" EAST BEING THE SOUTH LINE OF THE SOUTHEAST QUARTER OF SECTION 35, T 20 S, R 59 E, M.D.M., AS SHOWN BY THE AMENDED MAP ON FILE IN FILE 93, PAGE 95 OF SURVEYS, IN THE CLARK COUNTY RECORDER'S OFFICE.

BENCHMARK
 CITY OF LAS VEGAS BENCHMARK OLIVIO SHAWING RIVET & PLATE IN TOP OF CURB RETURN @ NW CORNER OF PAVILLON CENTER & ALTA, 3024.26' NAVD 1988 DATUM

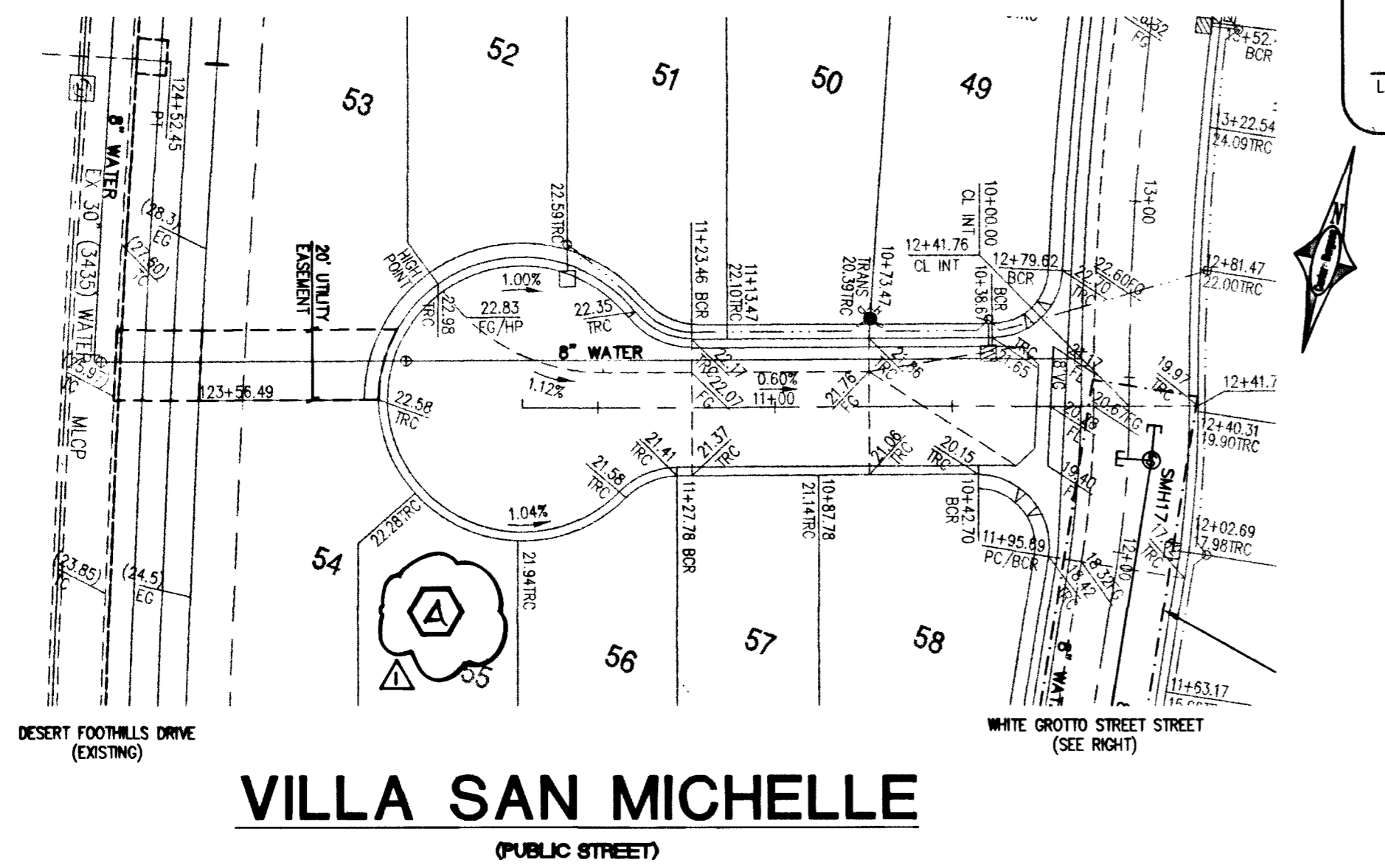
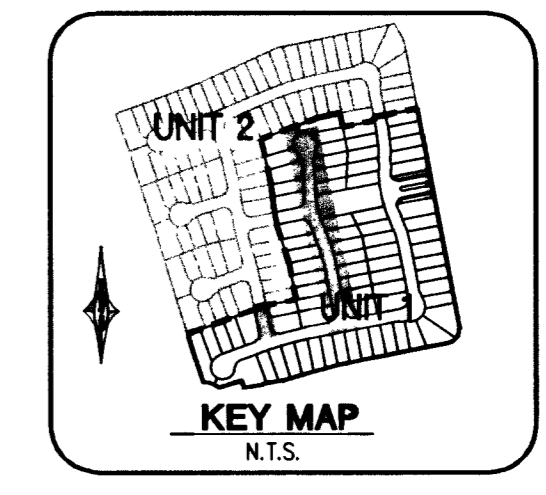
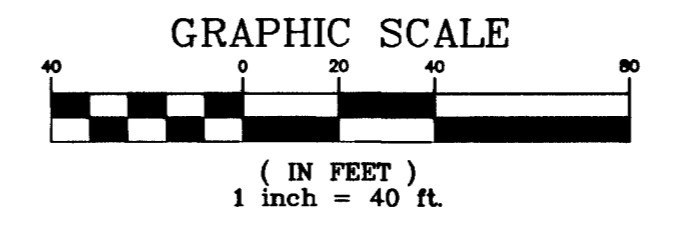
NOTE:
 ELEVATIONS SHOWN ON PLANS ARE 0.30' LESS THAN ELEVATION OF CITY OF LAS VEGAS BENCHMARK SHOWN ABOVE.

NOTE:
 SEE UTILITY PLANS FOR OFFSETS, NORTHINGS, AND EASTINGS.

- CONSTRUCTION NOTES**
- CONSTRUCT 2" AC PAVEMENT
 - CONSTRUCT 30" ROLL' TYPE CURB PER SIS STD DWG S-48
 - CONSTRUCT 24" L' TYPE CURB PER SIS STD DWG S-47
 - CONSTRUCT 4' SIDEWALK PER SIS STD DWG S-72 & S-48
 - CONSTRUCT 8' VALLEY GUTTER PER SIS STD DWG S-64
 - CONSTRUCT SIDEWALK RAMP PER CL STD DWG 235 (CASE 1)
 - CONSTRUCT 3" AC PAVEMENT
 - CONSTRUCT "A" TYPE CURB PER SIS STD DWG S-50
 - CONSTRUCT 5' SIDEWALK PER SIS STD DWG S-72

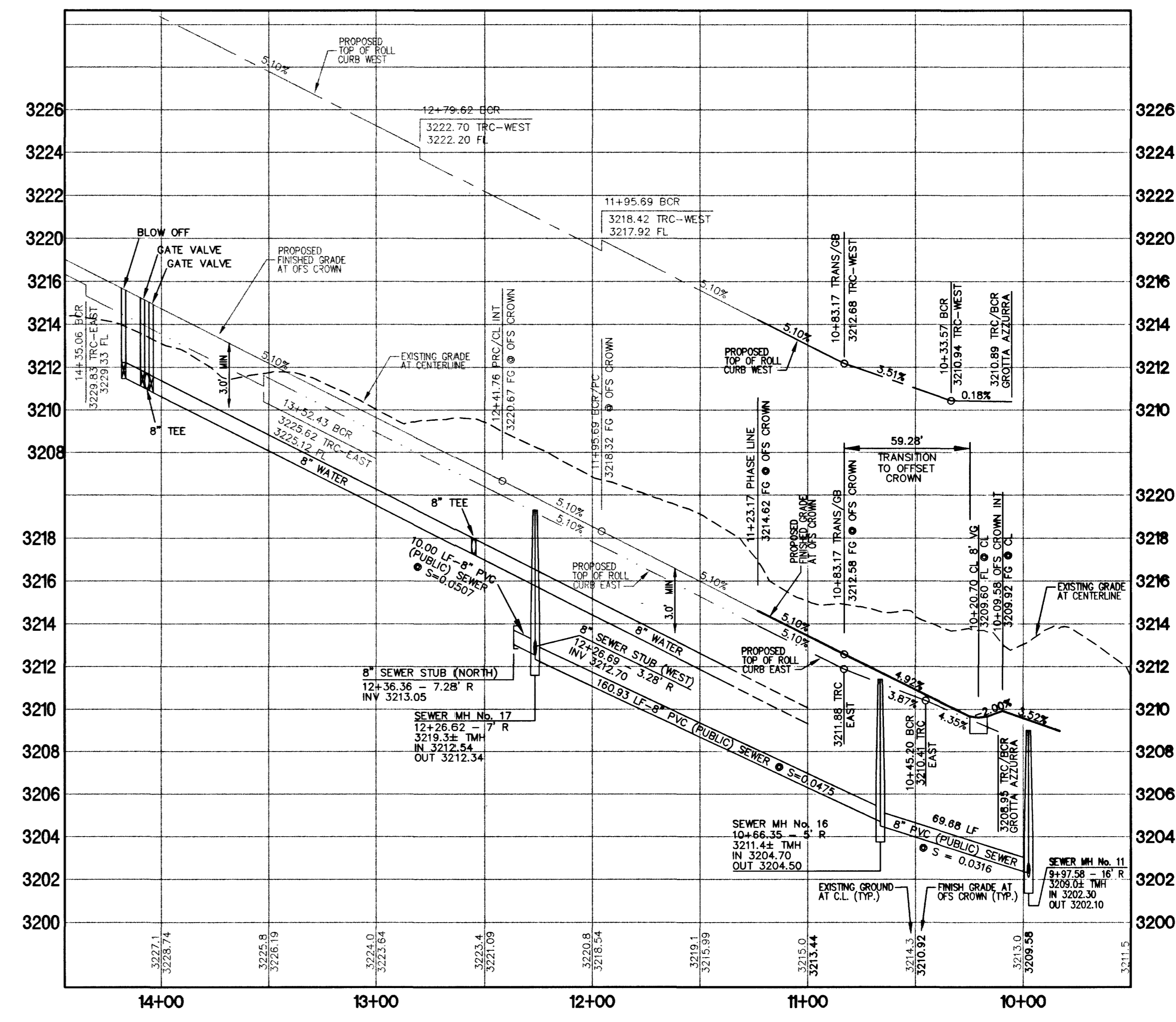
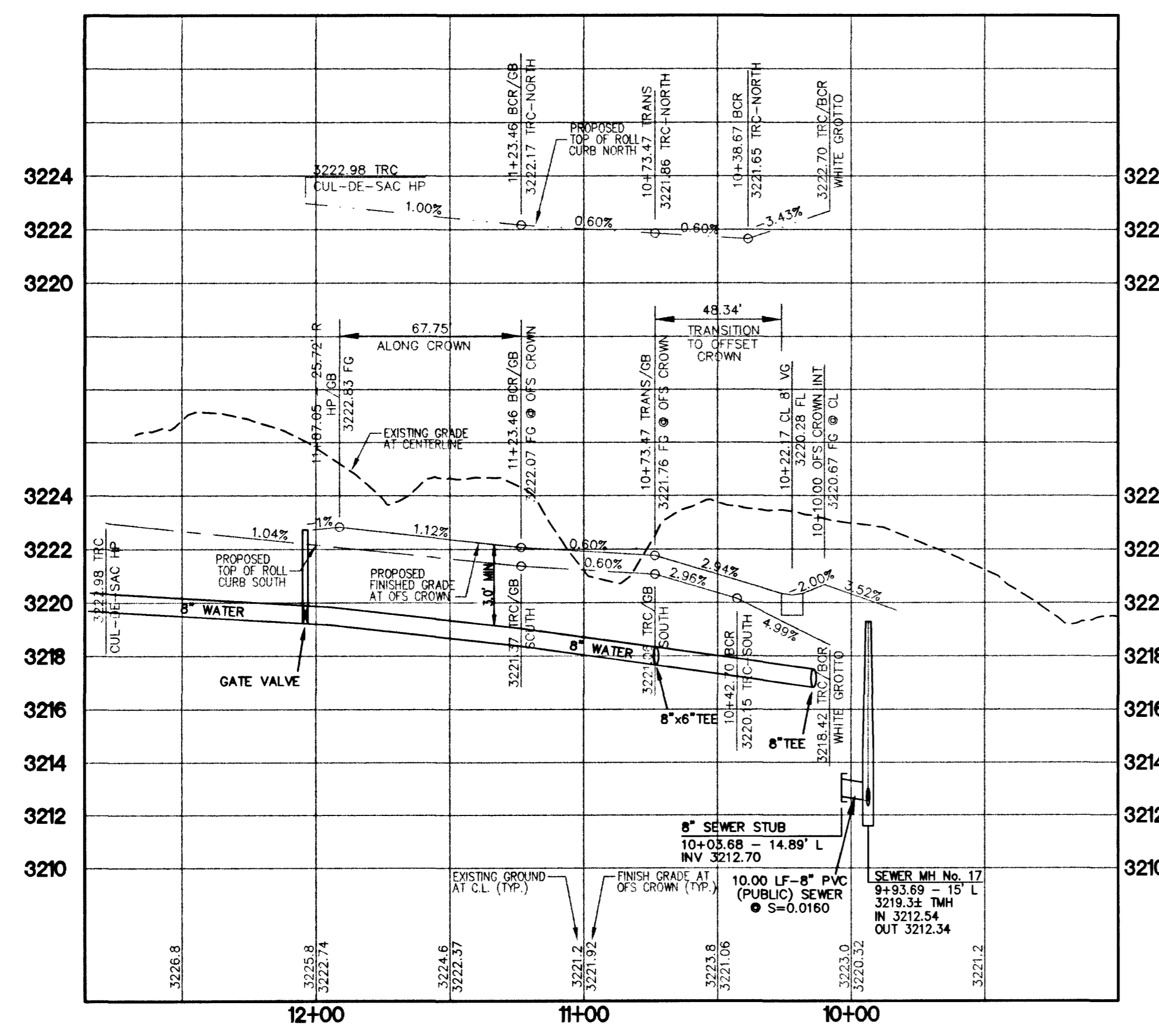
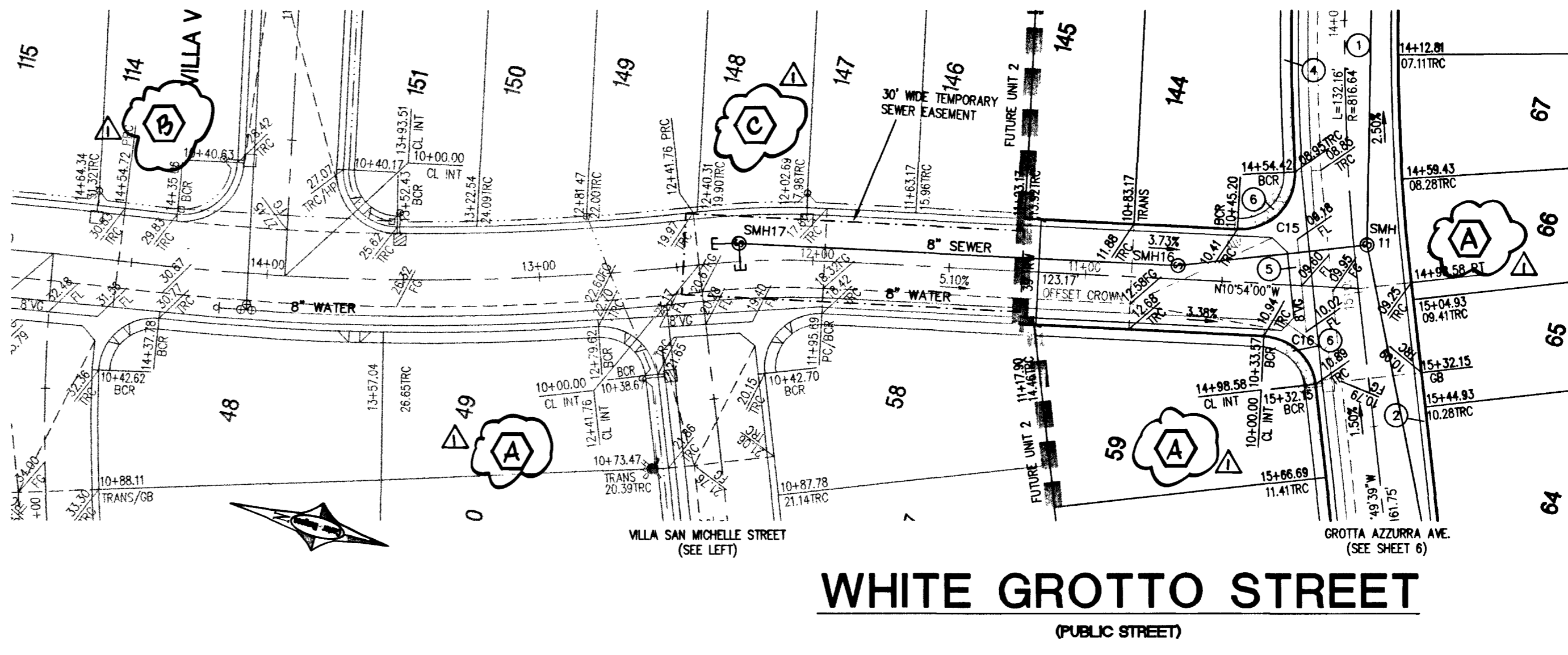
CURVE	LENGTH	RADIUS	TANGENT	DELTA	DELTA	DELTA
C15	33.57'	20.00'	22.28'	96°10'28"	15'	4.5'
C16	28.18'	20.00'	17.00'	80°43'59"	8'	8'

CASE 1
 SIDEWALK RAMP PER CC STD DWG 235



APPROVAL

Nancy Halls 10/15/02
 LAS VEGAS VALLEY WATER DISTRICT
 DATE



45662 47305
 April Martin

12/10/02 12:42 PM Add: BLOOM LETTERS

REVISION

750 Pilot Road, Suite F
 Las Vegas, Nevada 89119
 (702) 614-2500

KBHOME

6655 Bermuda Road
 Las Vegas, NV 89119
 (702) 558-5400 Fax: (702) 938-5464

Carter Burgess
 Consultants in Planning, Engineering,
 Construction Management and Related Services

PLAN AND PROFILE - WHITE GROTTO STREET & VILLA SAN MICHELLE COURT

CAPRI - UNIT 1 • THE VISTAS
 PARCEL Y • SUMMERLIN V-20

DRAWN BY: JL
 DESIGNED BY: JL
 CHECKED BY: MSW
 PROJECT NO.: 2-6530
 SCALE: 1"=40'
 SHEET: 9
 9 OF 14 SHEETS
 CLV DRAWING NO. 3074-4729-1

12/10/02

REGISTERED PROFESSIONAL ENGINEER - STATE OF NEVADA
 RICHARD A. LOZANO
 CIVIL
 No. 1474
 EXPIRES 12/31/03

U:\240540\DESIGN\WP\RW\TS\4566-08P.dwg