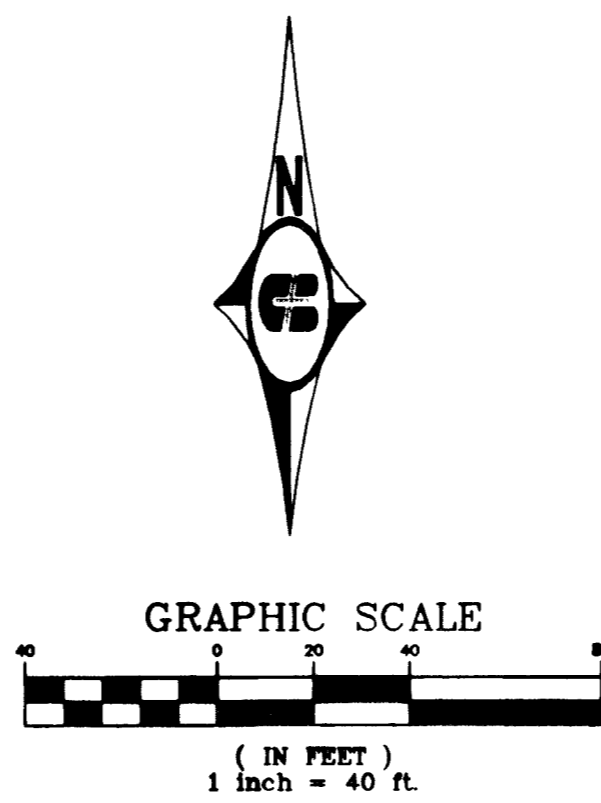
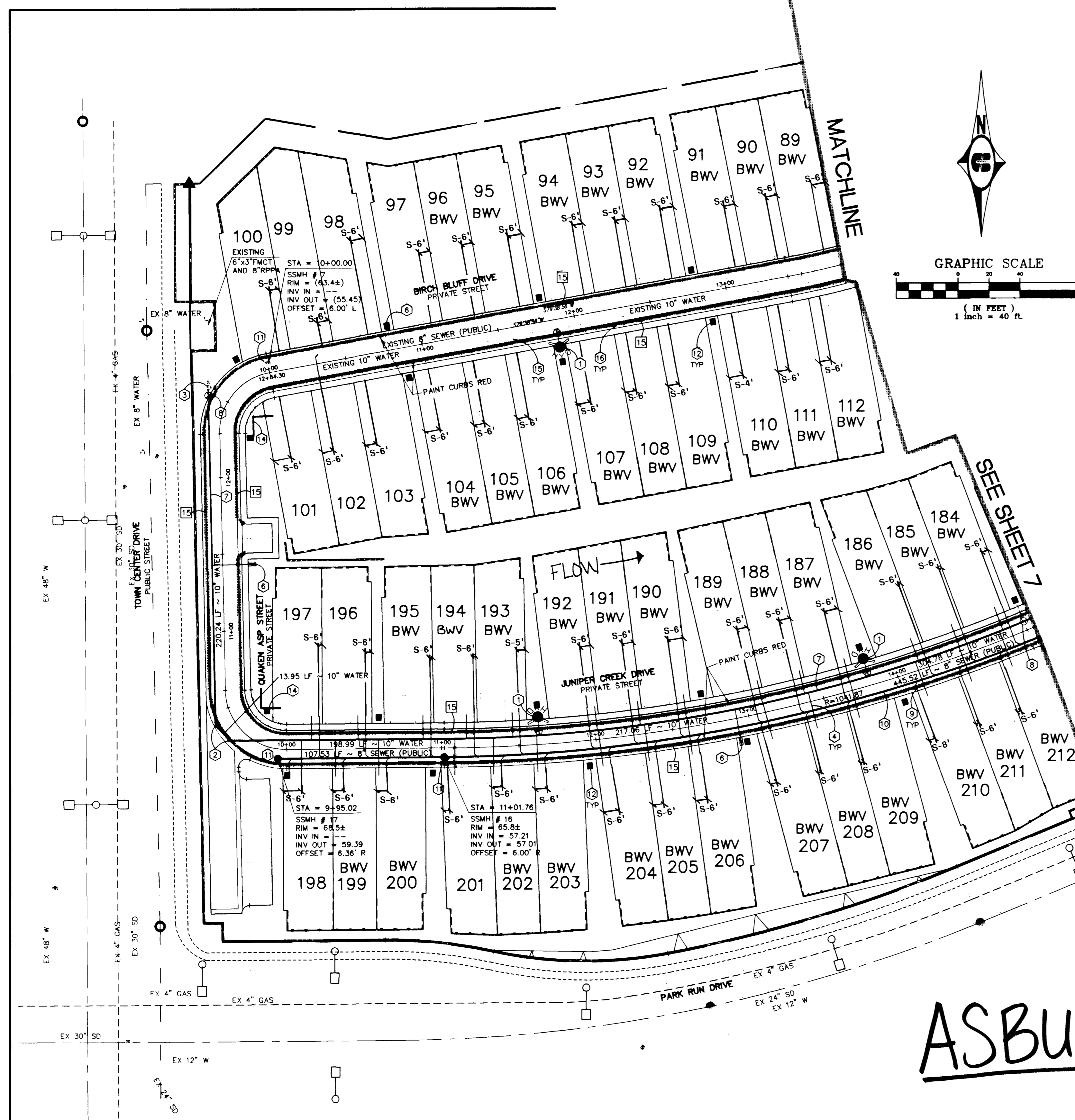


**LAS VEGAS VALLEY WATER DISTRICT NOTES**

- NO WORK SHALL BEGIN UNTIL THE WATER PLANS HAVE BEEN RELEASED FOR CONSTRUCTION BY THE LVVWD. FOLLOWING WATER PLAN APPROVAL, FORTY-EIGHT (48) HOUR NOTICE SHALL BE GIVEN TO THE LVVWC COMMUNICATION SUPPORT CENTER (258-7171) PRIOR TO THE START OF CONSTRUCTION. NOTICE MUST BE GIVEN BY 2:00 P.M. THE BUSINESS DAY PRIOR TO A LVVWD INSPECTION.
- ALL WORK SHALL CONFORM TO LVVWD STANDARD PLATES, DRAWING, AND SPECIFICATIONS AND UNIFORM DESIGN AND CONSTRUCTION STANDARDS FOR WATER DISTRIBUTION SYSTEM (UDACS), LATEST EDITION.
- ALL WORK, EXCEPT AS MODIFIED BY THESE PLANS OR BY NOTE 2, SHALL BE DONE IN ACCORDANCE WITH THE MOST CURRENT DRAFT OR EDITION OF THE UNIFORM STANDARD SPECIFICATIONS FOR PUBLIC WORKS CONSTRUCTION OFF-SITE IMPROVEMENTS, CLARK COUNTY AREA.
- A SINGLE PIPE MATERIAL SHALL BE USED THROUGHOUT THE PROJECT, UNLESS OTHERWISE APPROVED BY THE LVVWD.
- ALL SERVICE LATERALS TWO INCHES (2") IN DIAMETER AND SMALLER SHALL BE COPPER TUBING WITH LVVWD APPROVED SERVICE SADDLES.
- ALL WATER METER BOXES SHALL BE LOCATED OUTSIDE OF DRIVEWAY AREAS.
- ALL VALVES SHALL BE LOCATED OUTSIDE OF DRIVEWAYS, GUTTERS, CURBS AND ALLEY GUTTERS.
- THE FOLLOWING REQUIREMENTS MUST BE MET IN THE EVENT A WATER LINE AND A SANITARY SEWER OR STORM SEWER LINE CROSS:
  - POTABLE WATER SUPPLY QUALITY MATERIAL
  - ENCASEMENT, WITH FOUR INCH (4") CONCRETE (MINIMUM)
  - SLEEVING WITH POTABLE WATER SUPPLY QUALITY PIPE
 EACH PROVISION MUST EXTEND ALONG THE SANITARY OR STORM SEWER, ON EITHER SIDE OF THE WATER MAIN, A MINIMUM TEN FOOT (10') DISTANCE PERPENDICULAR TO THE EXTERIOR OF MAIN.
- WARNING TAPE SHALL BE REQUIRED OVER ALL MAINS, ALL SIX INCH (6") DIAMETER AND LARGER SERVICE LATERALS, AND ANY SERVICE LATERAL NOT INSTALLED PERPENDICULAR TO THE MAIN IN ACCORDANCE WITH STANDARD PLATE No. 27.
- ALL WATER FACILITIES SHALL BE FILLED, DISINFECTED, PRESSURE TESTED, FLUSHED, FILLED AND ACCEPTABLE WATER SAMPLE OBTAINED PRIOR TO CONNECTION TO THE LVVWD'S DISTRIBUTION SYSTEM.
- THE CONTRACTOR MUST OBTAIN ALL METERS TWO INCHES (2") AND SMALLER FROM LVVWD CENTRAL STORES. TELEPHONE 258-3152 FORTY-EIGHT (48) HOURS PRIOR TO PICK-UP.
- CONSTRUCTION MAY INTERRUPT SERVICE, WITH LVVWD APPROVAL AND PROPER NOTIFICATION, BETWEEN THE HOURS OF 10:00 P.M. AND 6:00 A.M. SUNDAY THROUGH THURSDAY. CIRCUMSTANCES THAT MAY REQUIRE TEMPORARY SERVICE FEED MUST HAVE PRIOR LVVWD APPROVAL.
- ALL WATER FACILITY CONSTRUCTION MATERIALS USED MUST BE LISTED ON THE LVVWD'S PRE-APPROVED MATERIALS AND MANUFACTURERS LISTING FOR NEW FACILITIES, LATEST REVISION OR SPECIFICALLY APPROVED ON THESE PLANS.



DRIVEWAY AND LATERAL STATION TABLE			
* ALL STATIONS IN THIS TABLE ARE AT BACK OF CURB			
LOT NUMBER	DRIVEWAY		SEWER
	DRIVEWAY CENTERLINE STATION	DRIVEWAY WIDTH	LATERAL STATION
89	STA: 13+54.42	16	STA: 13+67.57
90	STA: 13+26.88	16	STA: 13+36.90
91	STA: 12+95.89	16	STA: 13+08.90
92	STA: 12+54.08	16	STA: 12+66.89
93	STA: 12+26.61	16	STA: 12+38.89
94	STA: 11+95.89	16	STA: 12+08.89
95	STA: 11+54.08	16	STA: 11+66.89
96	STA: 11+26.67	16	STA: 11+38.89
97	STA: 10+95.89	16	STA: 11+08.89
98	STA: 10+54.08	16	STA: 10+66.89
99	STA: 10+26.67	16	STA: 10+36.89
100	STA: 09+98.84	16	STA: 10+08.89
101	STA: 10+13.85	16	STA: 10+03.03
102	STA: 10+41.25	16	STA: 10+31.03
103	STA: 10+72.03	16	STA: 10+59.03
104	STA: 11+13.31	16	STA: 11+00.49
105	STA: 11+40.71	16	STA: 11+30.49
106	STA: 11+71.49	16	STA: 11+58.49
107	STA: 12+13.31	16	STA: 12+00.49
108	STA: 12+40.71	16	STA: 12+30.49
109	STA: 12+71.49	16	STA: 12+58.49
110	STA: 13+13.31	16	STA: 13+00.49
111	STA: 13+40.71	16	STA: 13+30.49
112	STA: 13+70.53	16	STA: 13+58.49
113	STA: 14+13.31	16	STA: 14+00.49
114	STA: 14+40.71	16	STA: 14+30.49
115	STA: 14+72.03	16	STA: 14+58.49
116	STA: 15+13.31	16	STA: 15+00.49
117	STA: 15+40.71	16	STA: 15+30.49
118	STA: 15+71.49	16	STA: 15+58.49
119	STA: 16+13.31	16	STA: 16+00.49
120	STA: 16+40.71	16	STA: 16+30.49
121	STA: 16+71.49	16	STA: 16+58.49
122	STA: 17+13.31	16	STA: 17+00.49
123	STA: 17+40.71	16	STA: 17+30.49
124	STA: 17+71.49	16	STA: 17+58.49
125	STA: 18+13.31	16	STA: 18+00.49
126	STA: 18+40.71	16	STA: 18+30.49
127	STA: 18+71.49	16	STA: 18+58.49
128	STA: 19+13.31	16	STA: 19+00.49
129	STA: 19+40.71	16	STA: 19+30.49
130	STA: 19+71.49	16	STA: 19+58.49
131	STA: 20+13.31	16	STA: 20+00.49
132	STA: 20+40.71	16	STA: 20+30.49
133	STA: 20+71.49	16	STA: 20+58.49
134	STA: 21+13.31	16	STA: 21+00.49
135	STA: 21+40.71	16	STA: 21+30.49
136	STA: 21+71.49	16	STA: 21+58.49
137	STA: 22+13.31	16	STA: 22+00.49
138	STA: 22+40.71	16	STA: 22+30.49
139	STA: 22+71.49	16	STA: 22+58.49
140	STA: 23+13.31	16	STA: 23+00.49
141	STA: 23+40.71	16	STA: 23+30.49
142	STA: 23+71.49	16	STA: 23+58.49
143	STA: 24+13.31	16	STA: 24+00.49
144	STA: 24+40.71	16	STA: 24+30.49
145	STA: 24+71.49	16	STA: 24+58.49
146	STA: 25+13.31	16	STA: 25+00.49
147	STA: 25+40.71	16	STA: 25+30.49
148	STA: 25+71.49	16	STA: 25+58.49
149	STA: 26+13.31	16	STA: 26+00.49
150	STA: 26+40.71	16	STA: 26+30.49
151	STA: 26+71.49	16	STA: 26+58.49
152	STA: 27+13.31	16	STA: 27+00.49
153	STA: 27+40.71	16	STA: 27+30.49
154	STA: 27+71.49	16	STA: 27+58.49
155	STA: 28+13.31	16	STA: 28+00.49
156	STA: 28+40.71	16	STA: 28+30.49
157	STA: 28+71.49	16	STA: 28+58.49
158	STA: 29+13.31	16	STA: 29+00.49
159	STA: 29+40.71	16	STA: 29+30.49
160	STA: 29+71.49	16	STA: 29+58.49
161	STA: 30+13.31	16	STA: 30+00.49
162	STA: 30+40.71	16	STA: 30+30.49
163	STA: 30+71.49	16	STA: 30+58.49
164	STA: 31+13.31	16	STA: 31+00.49
165	STA: 31+40.71	16	STA: 31+30.49
166	STA: 31+71.49	16	STA: 31+58.49
167	STA: 32+13.31	16	STA: 32+00.49
168	STA: 32+40.71	16	STA: 32+30.49
169	STA: 32+71.49	16	STA: 32+58.49
170	STA: 33+13.31	16	STA: 33+00.49
171	STA: 33+40.71	16	STA: 33+30.49
172	STA: 33+71.49	16	STA: 33+58.49



**BENCHMARK**  
CITY OF LAS VEGAS BENCHMARK  
OLYMPIA RHT & PLATE IN TOP OF CURB NW  
SIDE OF TOWN CENTER DRIVE & SOUTH ORACLE ISLAND  
2728.37 NAVD 1988 DATUM (831.874 W)  
2728.19 SUMMER LN DATUM (DESIGN DATUM)

**BASIS OF BEARING**  
NORTH 15°23'46" EAST BEING THE BEARING OF  
THE CENTERLINE OF ANAZAZI DRIVE AS SHOWN  
BY MAP THEREOF ON FILE IN BOOK 74, PAGE 70  
OF PLATS IN THE CLARK COUNTY RECORDER'S  
OFFICE, CLARK COUNTY NEVADA

**CITY OF LAS VEGAS FIRE DEPARTMENT  
FIRE FLOW DATA**

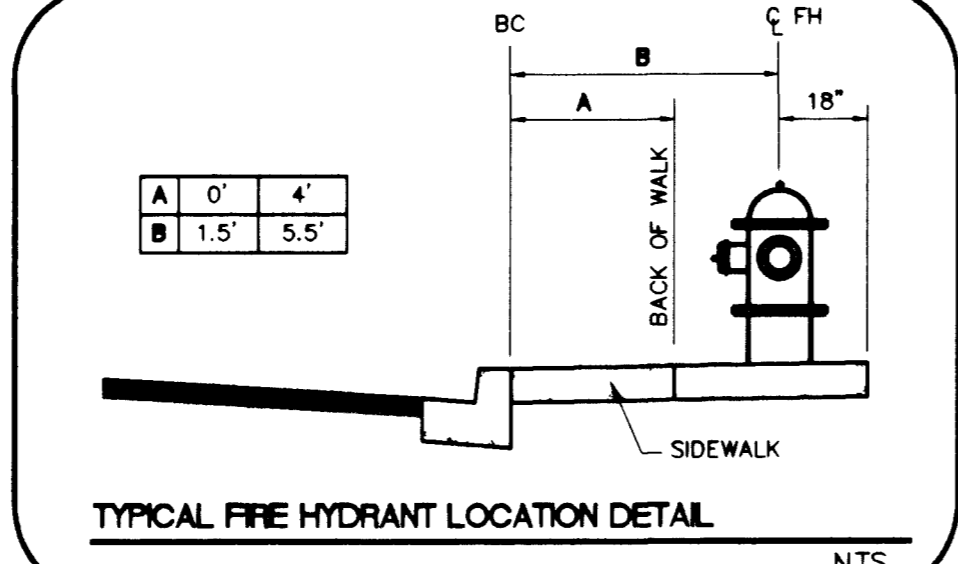
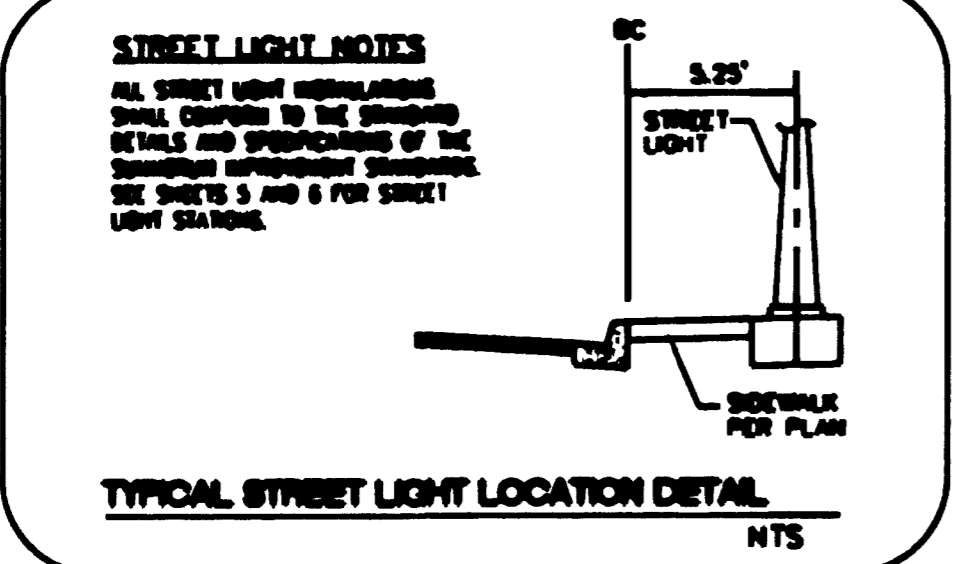
DESCRIPTION	V-N
TYPE OF CONSTRUCTION	2
NO. OF STORIES	2
TOTAL FLOOR AREA (SQ.FT.)	4,857 sq.ft.
LARGEST SUCCESSIVE FLOOR AREA	4,558 sq.ft.
ESTIMATED FIRE FLOW	1750 g.p.m.
BUILDING HEIGHT	38'
SPRINKLED	NO

REVIEWED & VERIFIED BY: *MM* DATE: 7-26-99  
CLV FIRE DEPT. AS TO DATA & REQUIREMENTS

- UTILITY CONSTRUCTION NOTES**
- WATER (PRIVATE FROM FMCT)**
- ① 6" F.H. ASSEMBLY (INCLUDES 8" x 6" TEE AND 6" GATE VALVE)
  - ② 10" 45° ELBOW
  - ③ CONNECT TO EXISTING 10" WATER MAIN
  - ④ 1" WATER SERVICE
  - ⑤ IRRIGATION SLEEVES PER SIS/ U-18
  - ⑥ 1" WATER SERVICE WITH RPPA PER UDACS PLATE NO. 10 AND IRRIGATION POWER SOURCE
  - ⑦ 10" WATER MAIN
  - ⑧ 10" GATE VALVE
- SEWER**
- ⑨ 4" SEWER LATERAL (PRIVATE)
  - ⑩ 8" PVC SEWER (PUBLIC)
  - ⑪ 48" SEWER MANHOLE (PUBLIC)
  - ⑫ EXISTING 4" SEWER LATERAL (PRIVATE)
  - ⑬ EXISTING 1" WATER SERVICE (PRIVATE)
  - ⑭ GAS LAMP
  - ⑮ STREET SIGNS
  - ⑯ STOP SIGN (R1-1)
  - ⑰ STREET NAME SIGN (D-3)
  - ⑱ NO PARKING. PAINT CURB RED

**LOTS WITH BACKWATER VALVES**  
THE FOLLOWING LOTS REQUIRE SEWER BACKWATER VALVES  
LOTS: 1-9, 77-85, 89-96, 104-112, 115-124, 172-180, 183-193, 195, 199-200, 202-212, 194

SEE SHEET C7, DRAWING No. 7 FOR ESTIMATED UTILITY QUANTITIES



**APPROVALS**  
APPROVAL OF THESE PLANS SHALL NOT BE CONSTRUED TO BE A PERMIT FOR OR AN APPROVAL OF ANY VIOLATION OF ANY OF THE PROVISIONS OF THE STATE OR COUNTY LAWS.

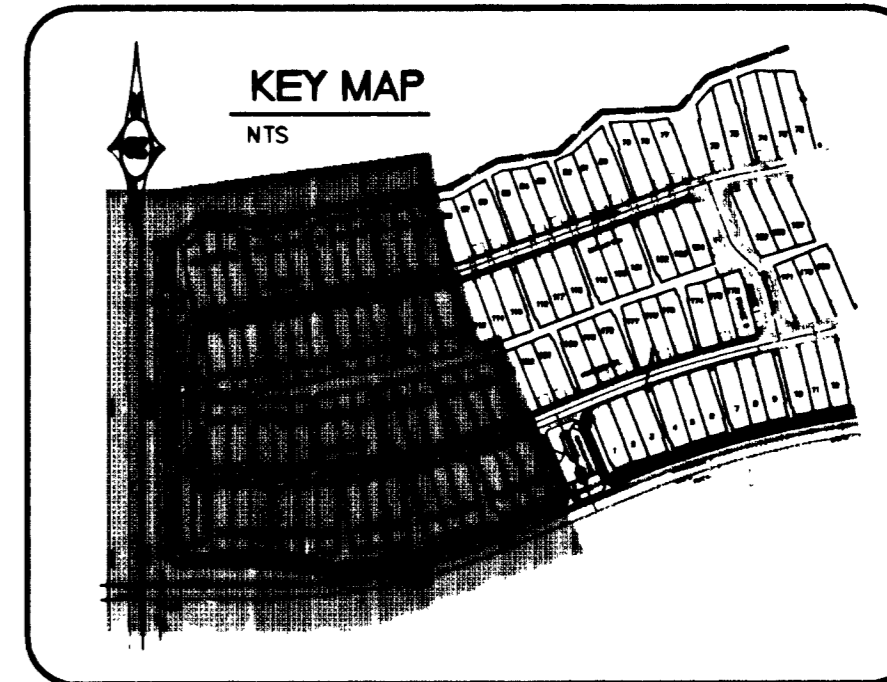
CLV: *[Signature]* FIRE DEPARTMENT DATE: 7-26-99  
*[Signature]* - MASTER METERS SITE  
LAS VEGAS VALLEY WATER DISTRICT DATE:

**FIRE HYDRANT INSTALLATION**  
FIRE HYDRANTS TO BE INSTALLED IN ACCORDANCE WITH THE UDACS STANDARD PLATE NO. 7

**DISCLAIMER NOTE:**  
UTILITY LOCATIONS SHOWN HEREON ARE APPROXIMATE ONLY. IT SHALL BE THE CONTRACTOR'S RESPONSIBILITY TO DETERMINE THE EXACT HORIZONTAL AND VERTICAL LOCATION OF ALL EXISTING UNDERGROUND OR OVER-HEAD UTILITIES PRIOR TO COMMENCING CONSTRUCTION. NO REPRESENTATION IS MADE THAT ALL EXISTING UTILITIES ARE SHOWN HEREON. THE ENGINEER ASSUMES NO RESPONSIBILITY FOR UTILITIES NOT SHOWN OR UTILITIES NOT SHOWN IN THEIR PROPER LOCATION. CONTRACTOR TO NOTIFY ENGINEER OF ANY CHANGES OR DISCREPANCIES.

Avoid cutting underground utility lines. It's costly.  
**Call before you Dig**  
1-800-227-2600  
UNDERGROUND SERVICE (US)

Avoid overhead power line contact.  
**Call before you Overhead**  
1-702-593-6111  
NEVADA POWER CORPORATION  
AND SAFETY SERVICES DEPARTMENT



DRAWN BY: EES  
DESIGNED BY: EES  
CHECKED BY: RWA  
PROJECT NO.: 980068010  
SCALE: 1"=40' N/A  
SHEET C6  
6 OF 14 SHEETS  
DRAWING NO. 307Y-4596-2

**Pulte Homes**  
An American Favorite

**ASBUILT**  
UTILITY PLAN  
SEWER

**COTTONWOOD TERRACE  
PHASE II**

**Robert W. Burgess**  
8665 Bermuda Road  
Las Vegas, NV 89119  
Consultants in Planning, Engineering, Architecture,  
Construction Management, and Related Services  
(702) 898-5400 Fax: (702) 898-5454

REVISION BY DATE