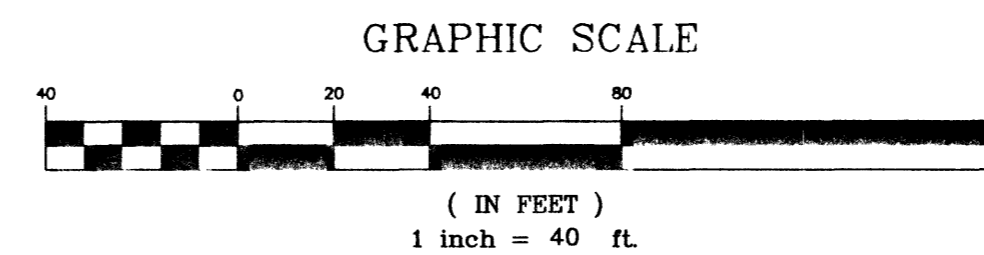


CONSTRUCTION NOTES:

- 22 INSTALL 8" SEWER LATERAL PER STD. DWG(S) SD-12, SD-16B & SD-17
- 23 CONSTRUCT 48" SANITARY SEWER MANHOLE PER STD. DWG(S) SD-1, SD-6, & SD-7
- 24 CONSTRUCT 6" SANITARY SEWER LATERAL PER DETAILS SD-12 & SD-17
- 25 INSTALL 15" SANITARY SEWER LINE
- 26 ADJUST MANHOLE RIM PER STD. DWG(S) SD-6 AND SD-3B

PIPE TRENCH NOTES:

- 1. IN EXISTING AND NEW PAVED AREAS & STREET CROSSING INSTALL PIPE PER STD. DETAIL #504 EXCEPT USE TYPE II AGGREGATE IN AREA 2 FEET BELOW PAVEMENT.

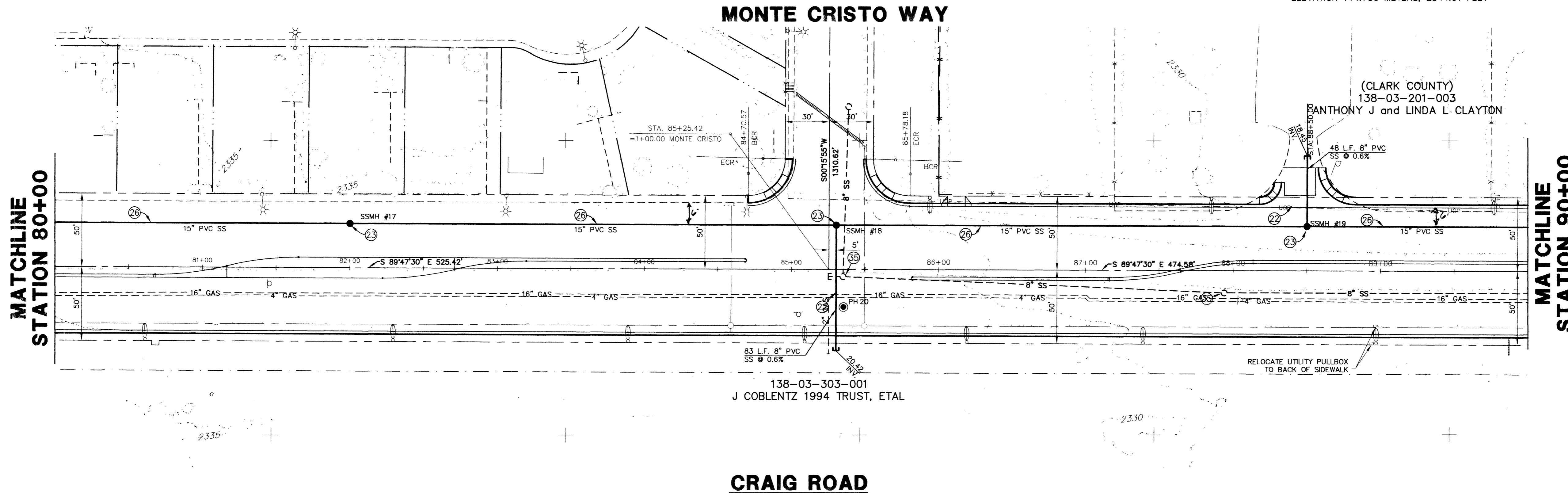


BASIS OF BEARING

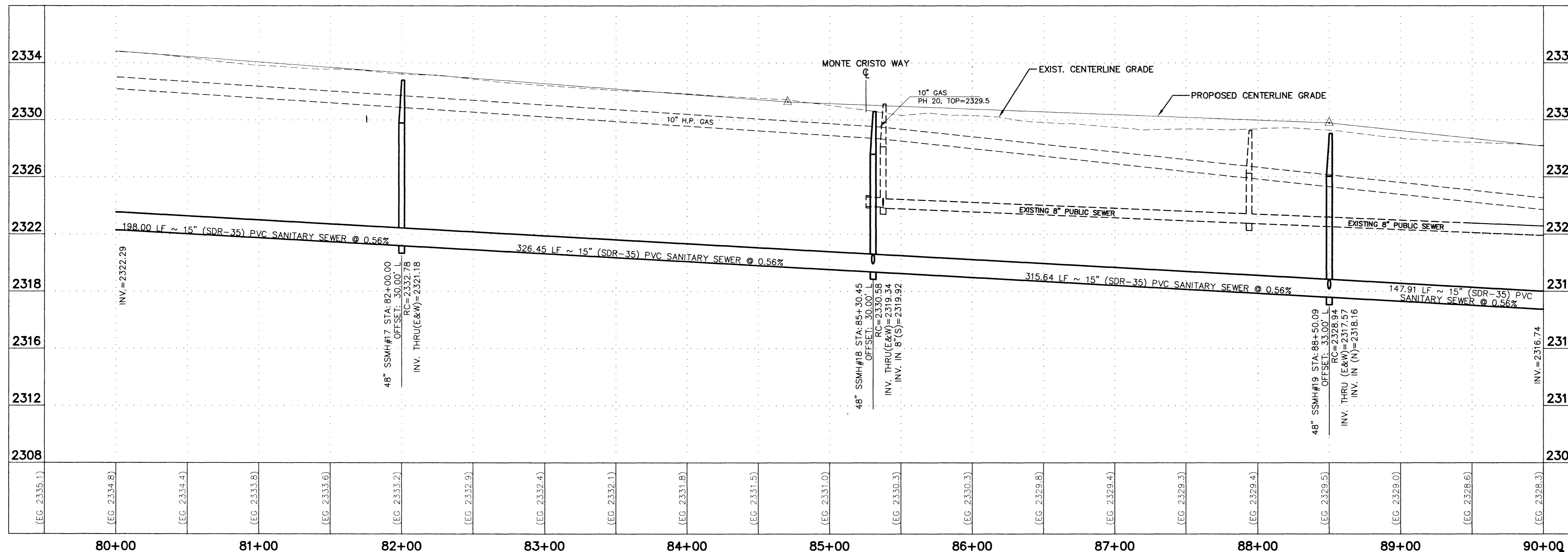
NORTH 39°40'38" WEST BEING THE BEARING OF THE LINE FROM POINT 825 TO POINT No. 808 AS SHOWN BY THAT CERTAIN RECORD OF THE SURVEY ON FILE IN THE OFFICE OF THE CLARK COUNTY RECORDER, CLARK COUNTY, NEVADA IN FILE 88, PAGE 53. SAID BEARING BEING BASED ON THE NORTH AMERICAN DATUM OF 1983 (NAD '83), NEVADA STATE PLANE EAST ZONE(2701)

BENCHMARK

NAVD 88- CLV BENCH 1LV003W4
CLV PIN & PLATE IN TOP OF ELEC. BASE
SOUTH SIDE OF CRAIG RD., 250' +/- EAST
OF BUFFALO DR.
ELEVATION 714.730 METERS, 2344.91 FEET



NOTE:
FOR STORM DRAIN LATERAL CROSSINGS SEE STORM DRAIN SECTION SHEET SD-13



Call before you Overhead

1-702-593-6111

NEVADA POWER CORPORATION
SAFETY SERVICE CONNECTION

Call before you Dig.

1-800-227-2600

REV.	DATE	BY	REVISION

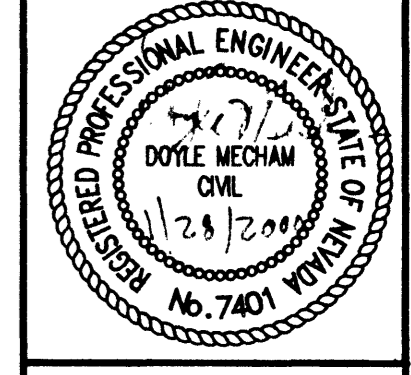
CITY OF LAS VEGAS
751 SOUTH FORTH STREET
LAS VEGAS, NEVADA 89101

URS Greiner
2785 EAST DESERT INN ROAD
LAS VEGAS, NEVADA 89121
(702)-796-7775 FAX (702)-796-1803

8" & 15" SANITARY SEWER PLAN AND PROFILE STA. 80+00 TO STA. 90+00

CRAIG ROAD IMPROVEMENTS BID NO. 00.1730.23

DRAWN BY:	DMS/MRA	7/20/98
DESIGNED BY:	DMS/MRA	7/20/98
CHECKED BY:	DM	7/20/98
PROJECT NO:	44300	SCALE: 1"=40' HOR. 1"=4' VERT.



SHEET **SS-7**
35 OF 55 SHEETS
DRAWING NO. **107-V3048**

45125

As Built