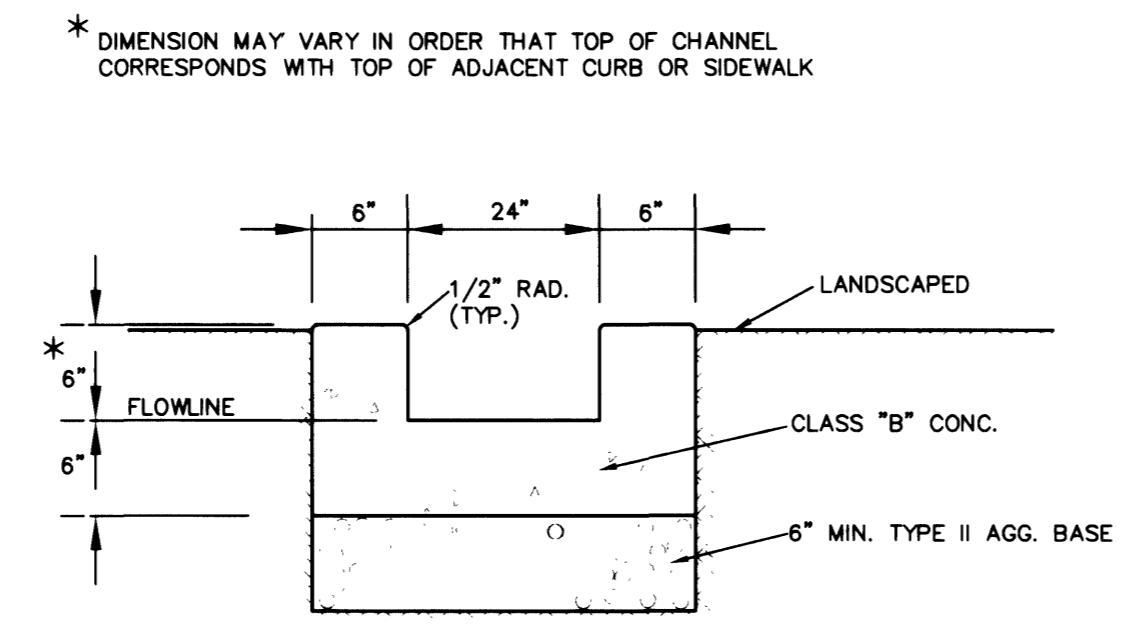
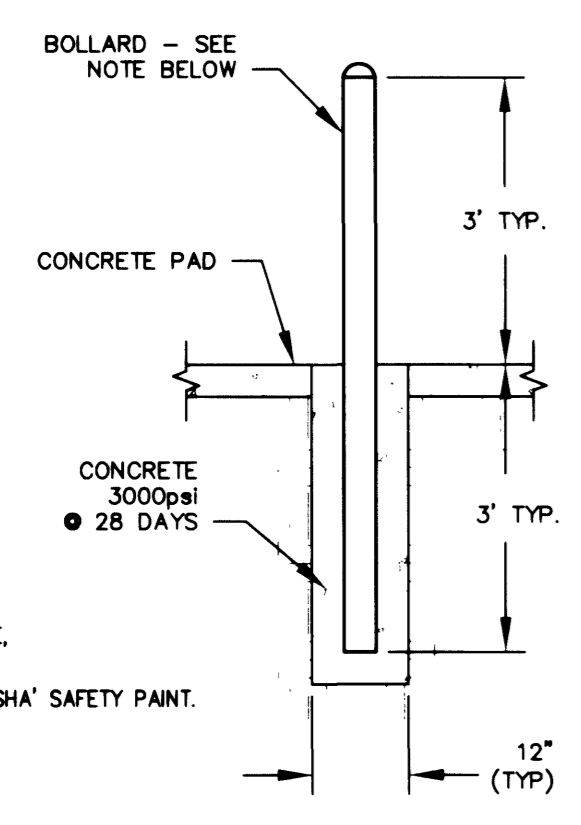
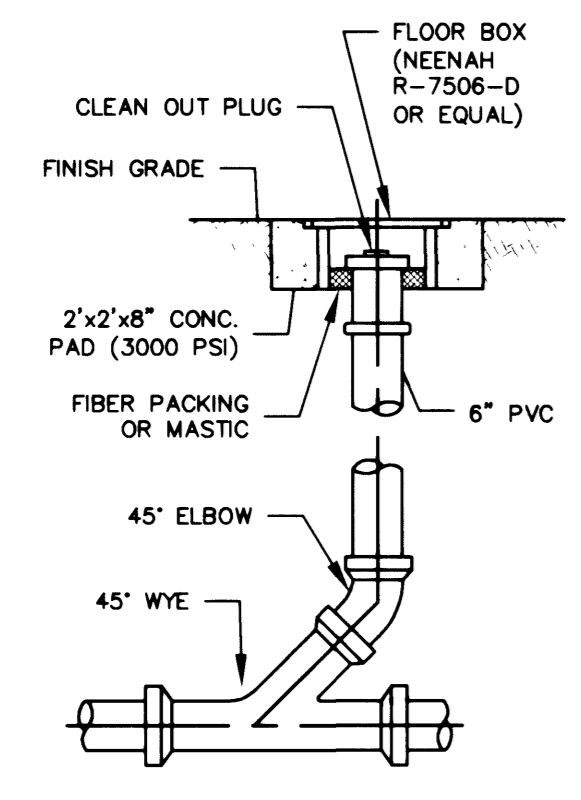
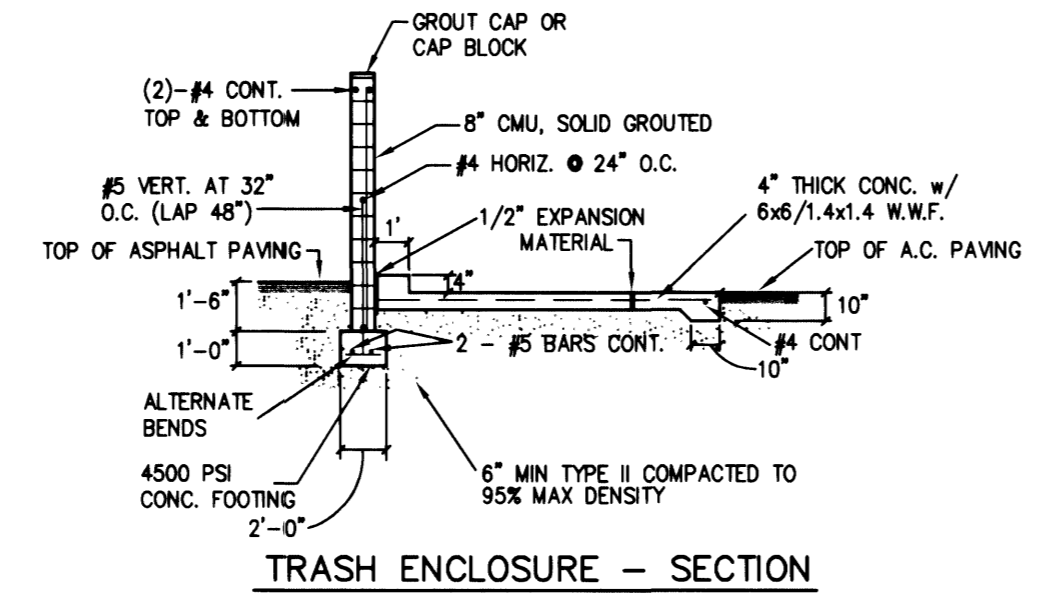
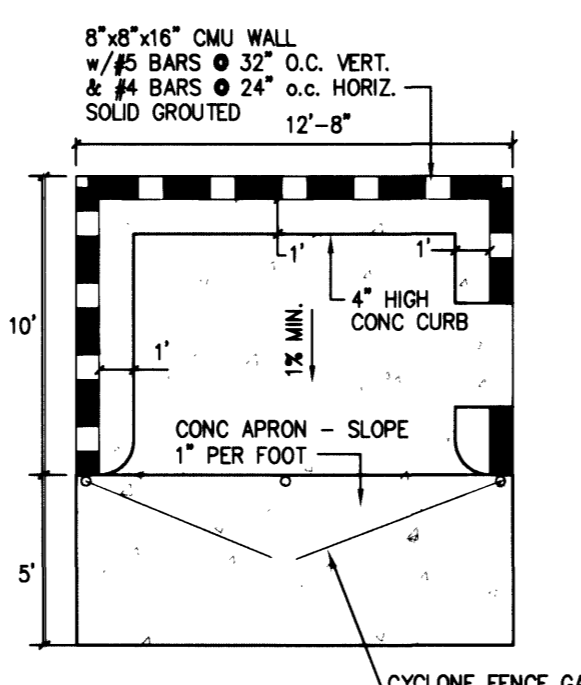


ACCESSIBLE CURB RAMP
 NOT TO SCALE

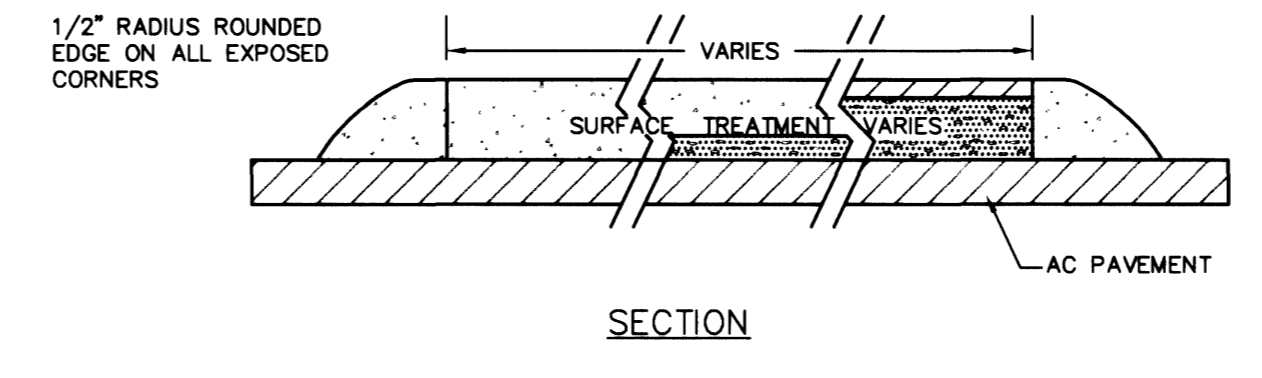


NOTES:
 1. EXPANSION JOINTS REQUIRED AT ALL LOCATIONS WHERE CHANNEL MEETS CURB.
 2. WEAKENED PLANE JOINTS REQUIRED AT 10' MAX. SPACING.

2" CONCRETE CHANNEL
 NOT TO SCALE

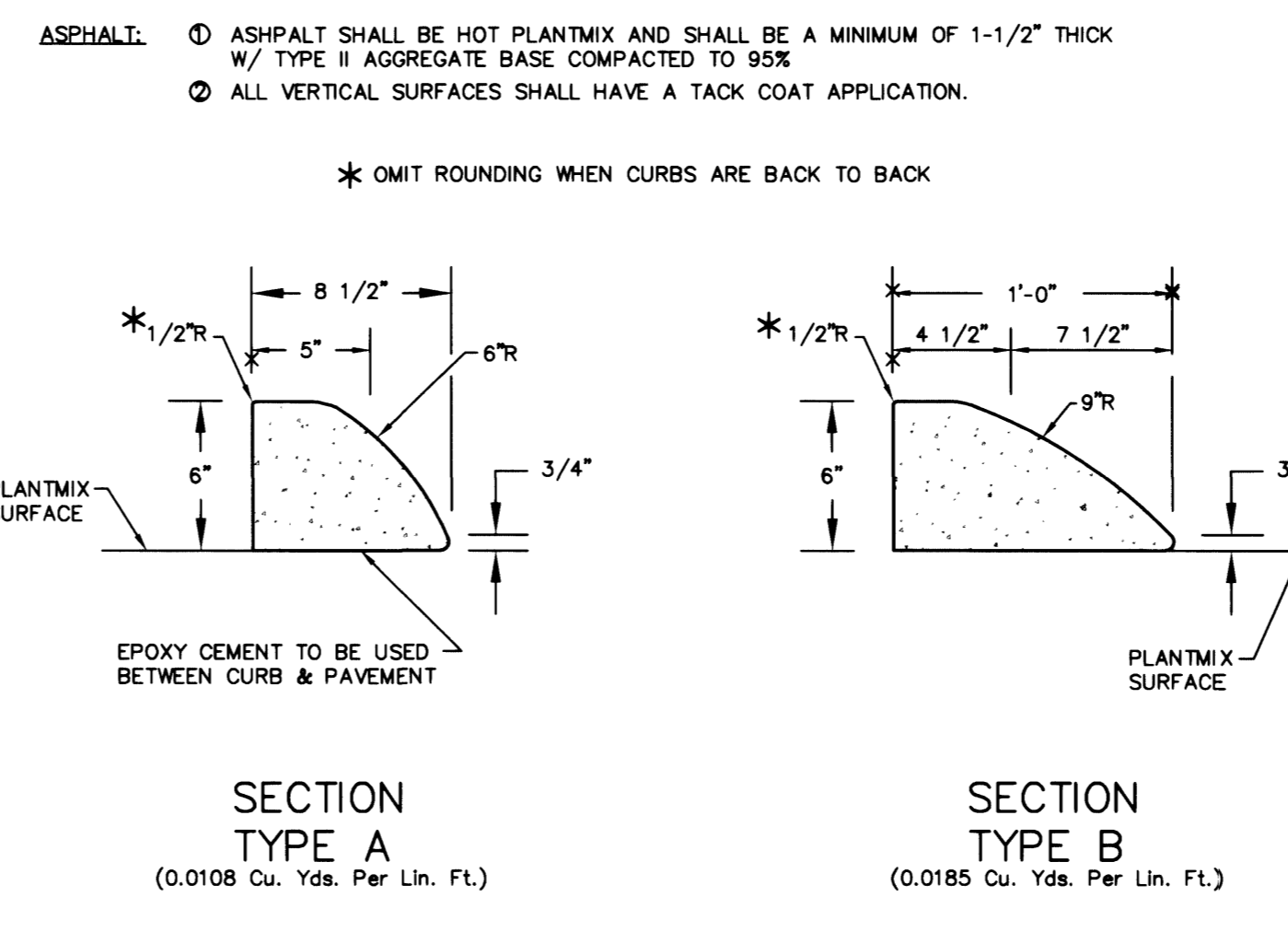


TRASH ENCLOSURE
 NOT TO SCALE

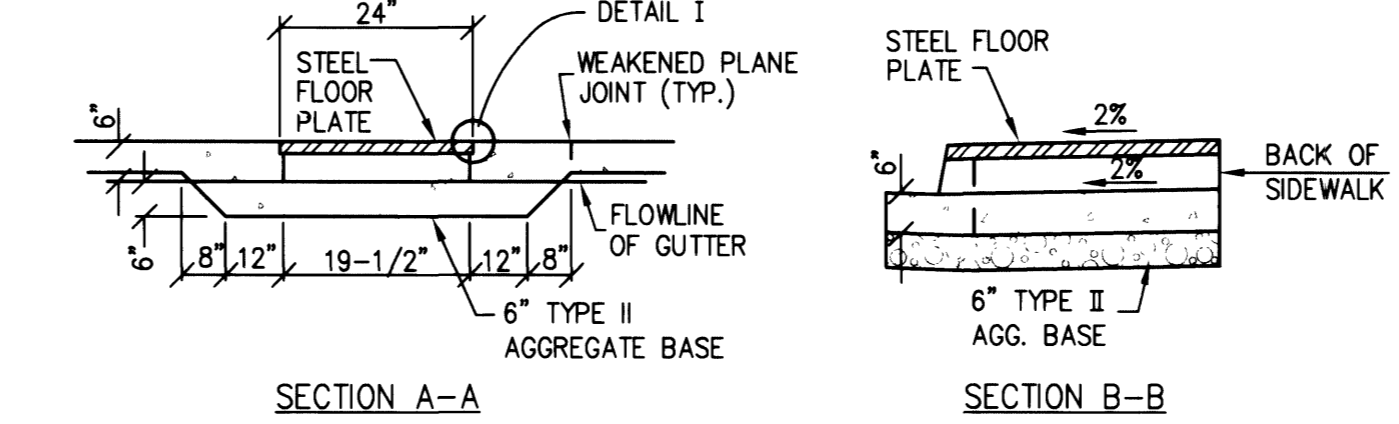
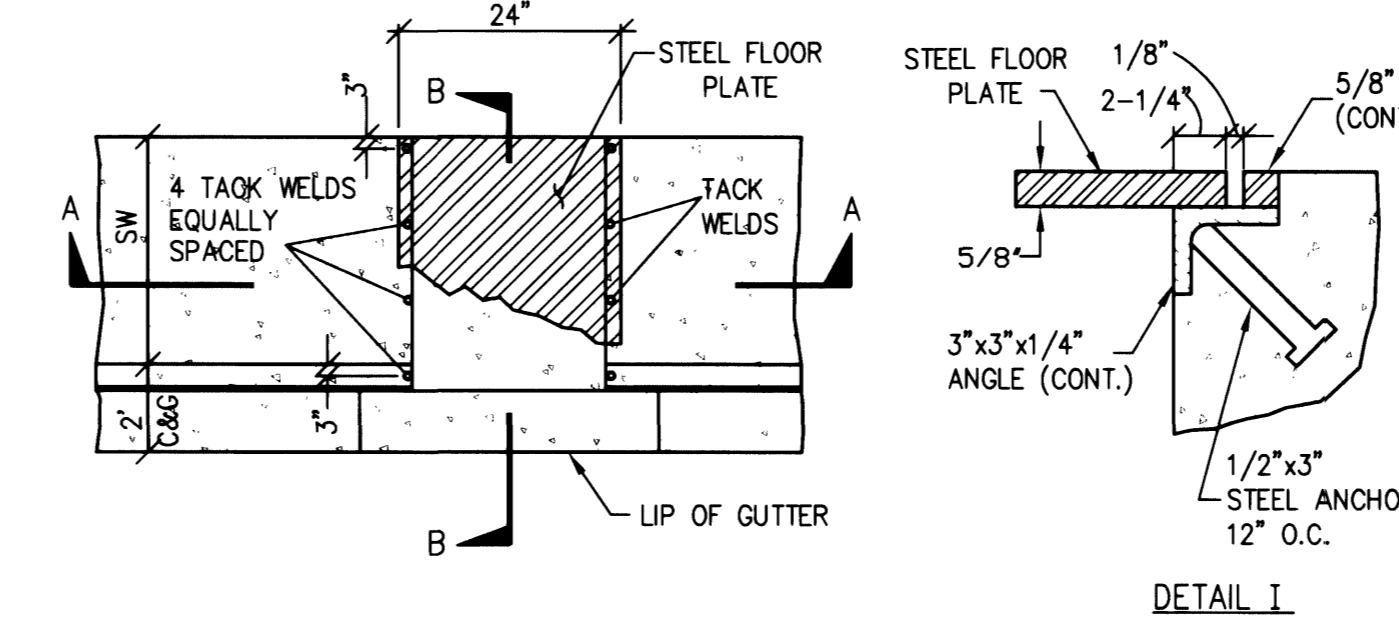


SURFACE TREATMENT NOTES:
CONCRETE:
 1. 1/2" EXPANSION JOINT MATERIAL AT ALL COLD JOINTS, AT BEGINNING & END OF RETURNS; 300' MAX. INTERVALS FOR EXTRUDED CURB AND 30' MAX. INTERVALS FOR FORMED CURB.
 2. WEAKENED PLANE JOINTS EVERY 10' STAGGER WITH No. 4 BARS.
 3. REFERENCE DRAWING No. 234 FOR EXPANSION JOINT AND WEAKENED PLANE JOINT LAYOUT.
 4. ALL REINFORCED STEEL SHALL HAVE 2" CLEAR COVER UNLESS OTHERWISE SHOWN.
 5. CONCRETE SHALL BE CLASS "B" AND SHALL BE A MINIMUM OF 4" THICK.
 6. EXPANSION MATERIAL NOT REQUIRED AT BACK OF CURB FOR MONOLITHIC ISLAND.

ASPHALT:
 1. ASPHALT SHALL BE HOT PLANTMIX AND SHALL BE A MINIMUM OF 1-1/2" THICK W/ TYPE II AGGREGATE BASE COMPACTED TO 95%
 2. ALL VERTICAL SURFACES SHALL HAVE A TACK COAT APPLICATION.

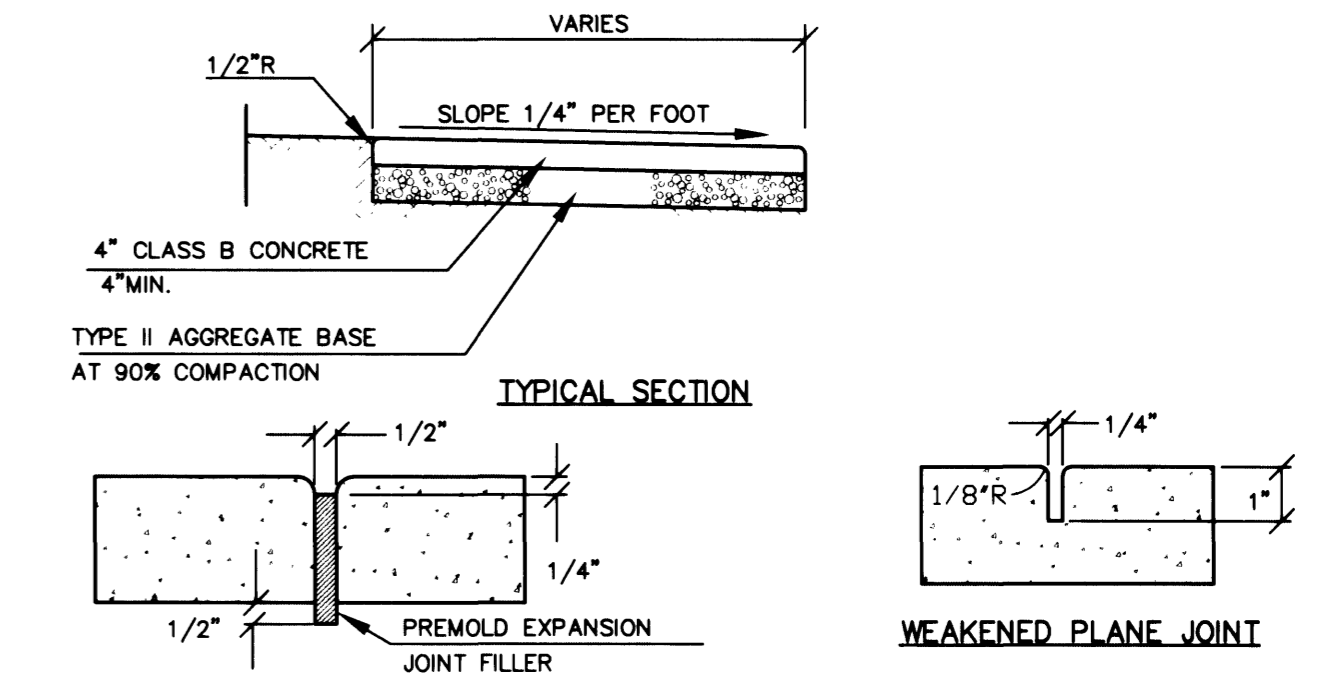
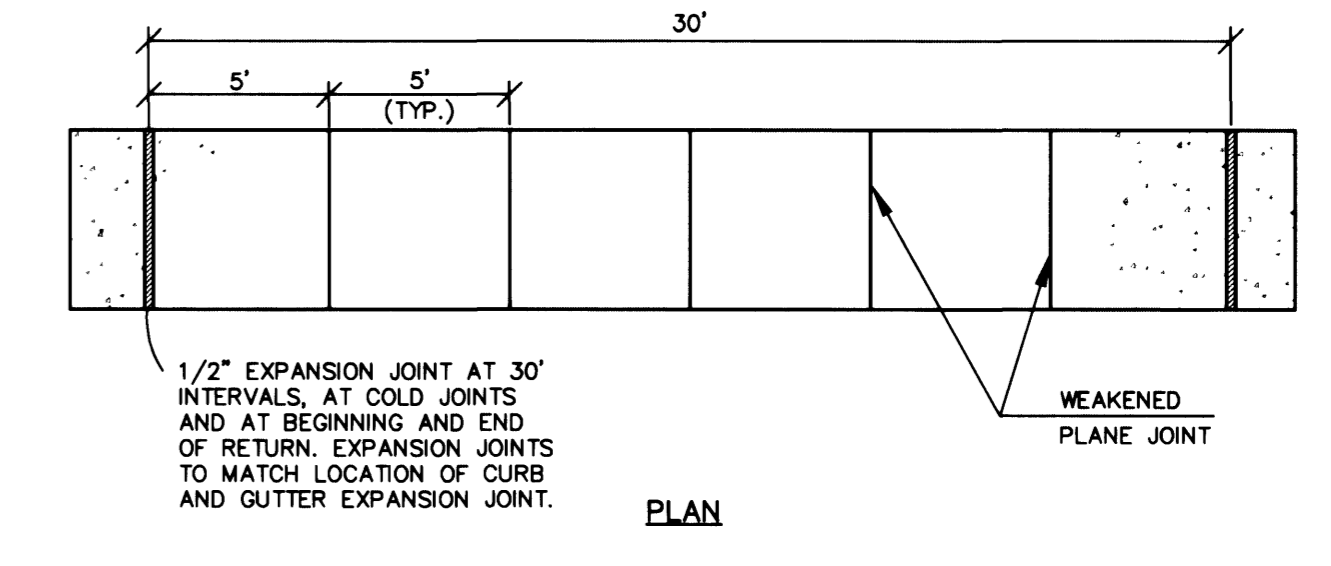


TACK-ON 'A' CURB (MODIFIED)
 STD. DWG. 220-A
 NOT TO SCALE



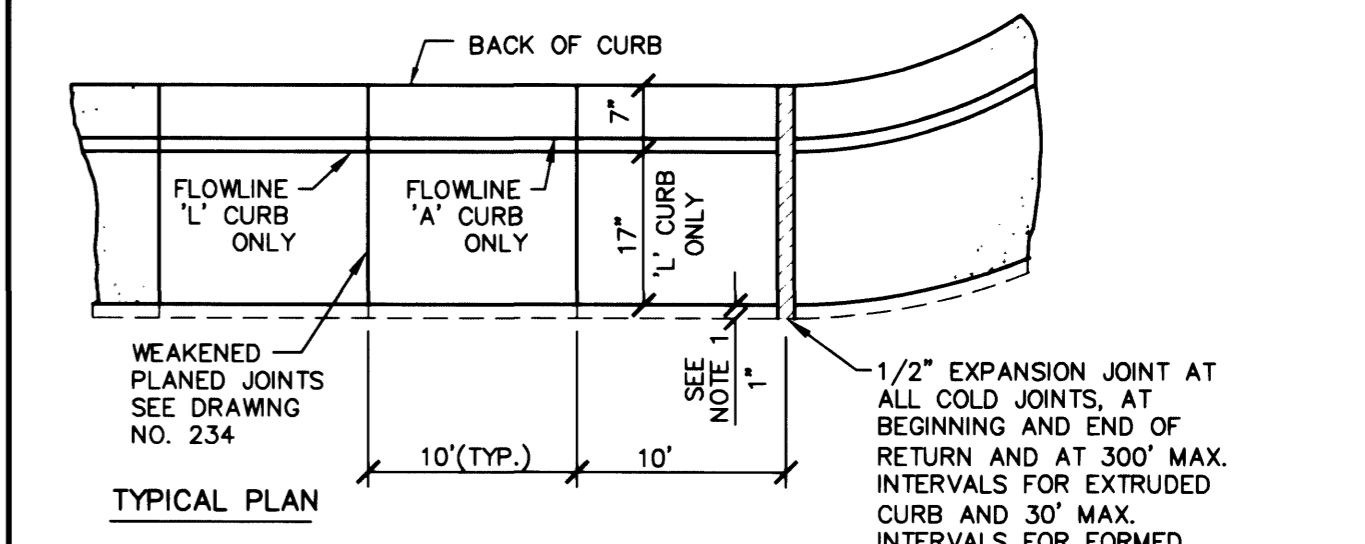
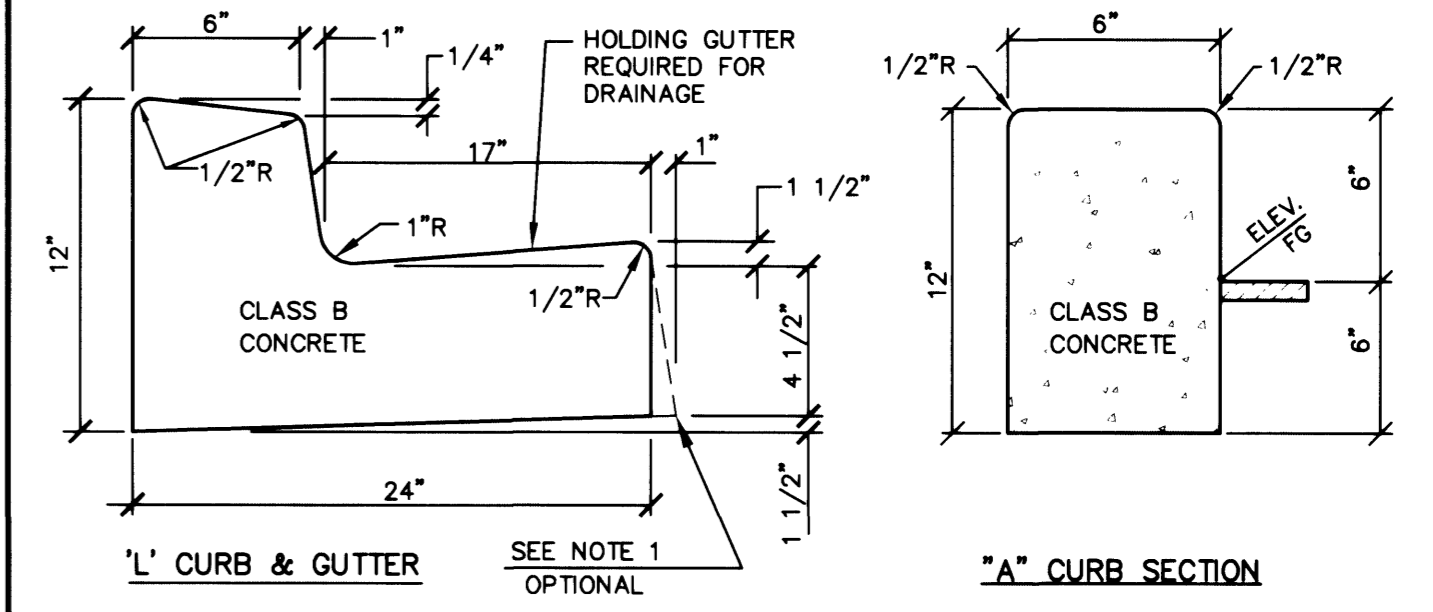
NOTES:
 1. ALL EXPOSED METAL PARTS SHALL BE GALVANIZED AND ALL GALVANIZING DAMAGED BY FABRICATION OR INSTALLATION SHALL RECEIVE TWO COATS OF ALUMINUM PAINT (GALVANOX OR EQUAL)

SIDEWALK DRAIN
 NOT TO SCALE



NOTE:
 1. ON ALL CURB RETURNS A 1/2" EXPANSION JOINT SHALL BE CONSTRUCTED BETWEEN THE BACK OF CURB AND THE SIDEWALK FOR THE ENTIRE LENGTH OF THE RETURN.

SIDEWALK
 STD. DWG. NO. 234
 NOT TO SCALE



NOTES:
 1. 1" BATTER ON GUTTER FACE OPTIONAL.
 2. WHERE LONGITUDINAL SLOPE IS LESS THAN 0.4% THE FLOW LINE SHALL BE WATER TESTED.

'L' + 'A' CURB DETAILS
 STD. DWG. No. 216
 NOT TO SCALE

<p>ALCO-STEWART ENTERPRISES, INC. 17298 PACIFIC COAST HIGHWAY PACIFIC PALISADES, CA 90272 (310) 459-7645 FAX (310) 459-8085</p>	<p>LOCHSA ENGINEERING 6828 SPRING MTN. RD. SUITE 308 LAS VEGAS, NV. 89146 (702) 365-9312 FAX (702) 365-9317</p>
<p>ALCO-STEWART ENTERPRISES RETAIL BUILDING @ LAMB BLVD. / STEWART AVE.</p>	<p>DETAIL SHEET</p>
<p>DRAWN BY: M.L.G. 10/29/2001</p>	<p>DESIGNED BY: M.L.G. 10/29/2001</p>
<p>CHECKED BY: M.L.G. 10/29/2001</p>	<p>PROJECT NO: 6627</p>
<p>SCALE: 1/4" = 1'-0"</p>	<p>SCALE: 1/4" = 1'-0"</p>
<p>SEAL</p> <p>KENDARD F. MIZE II CIVIL ENGINEER No. 10935</p>	<p>DATE: 11/1/03</p>
<p>SHEET 6 OF 8 SHEETS</p>	<p>C.L.V. DRAWING NO. 107-V3616</p>