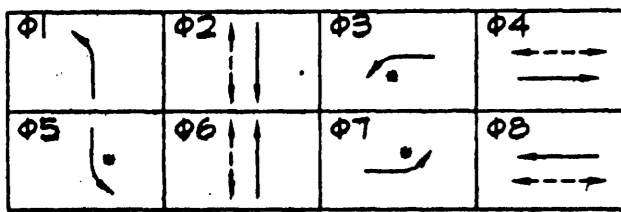
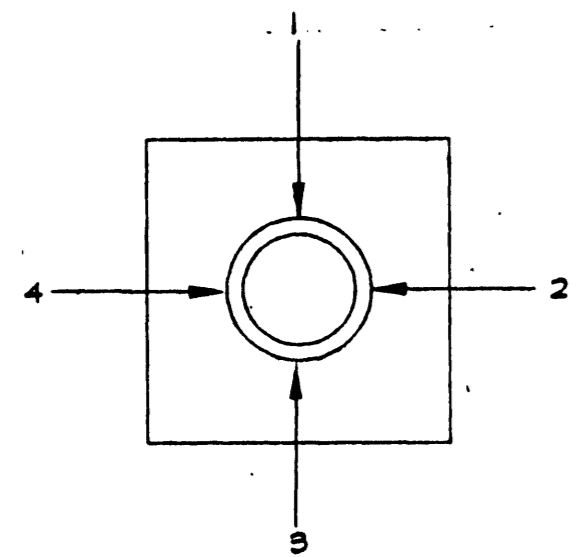


**STREET NAME TABLE**

POLE	ILLUMINATED STREET NAMES	BLOCK NUMBER
(A)	CRAIG RD	7600
(B)	BUFFALO DR	4400
(C)	CRAIG RD	7500
(D)	BUFFALO DR	4300

SEE NOTE 16 AND DETAIL 2 ON SHEET T1

**QUADRANT LOCATION**



CONFLICT FLASHING SHALL BE ALL RED.

**PHASE DIAGRAM**

\* PROTECTIVE-PERMISSIVE LEFT TURN

STRIPING SHOWN FOR SIGNAL DESIGN ONLY. SEE CIVIL PLAN TS-1 FOR STRIPING TO BE INSTALLED FOR PROJECT.

Copyright 1996 by T. J. Krob Consulting Engineers, Inc.

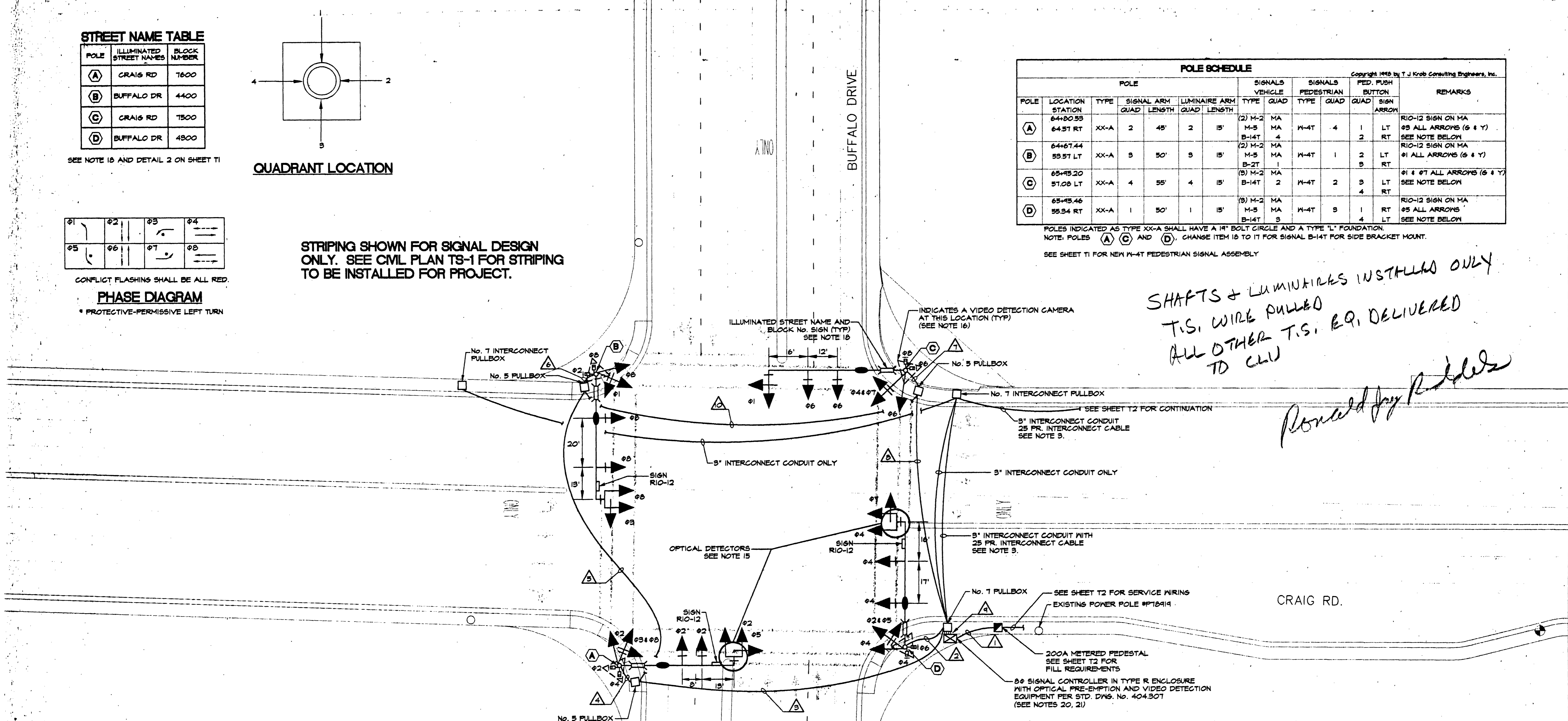
POLE	LOCATION STATION	TYPE	SIGNAL ARM		LUMINAIRE ARM		SIGNALS VEHICLE		SIGNALS PEDESTRIAN		PED. PUSH BUTTON	REMARKS	
			QUAD	LENGTH	QUAD	LENGTH	TYPE	QUAD	TYPE	QUAD			
(A)	64+80.55	XX-A	2	45'	2	15'	(2) M-2	MA	M-4T	4	1	LT	RIO-12 SIGN ON MA #5 ALL ARROWS (6 & 7) SEE NOTE BELOW
	M-5						MA						
(B)	64+67.44	XX-A	3	50'	3	15'	(2) M-2	MA	M-4T	1	2	LT	RIO-12 SIGN ON MA #1 ALL ARROWS (6 & 7) SEE NOTE BELOW
	M-5						MA						
(C)	65+45.20	XX-A	4	55'	4	15'	(3) M-2	MA	M-4T	2	3	LT	#1 & #7 ALL ARROWS (6 & 7) SEE NOTE BELOW
	M-5						MA						
(D)	65+45.46	XX-A	1	50'	1	15'	(3) M-2	MA	M-4T	3	1	RT	RIO-12 SIGN ON MA #5 ALL ARROWS SEE NOTE BELOW
	M-5						MA						

POLES INDICATED AS TYPE XX-A SHALL HAVE A 1" BOLT CIRCLE AND A TYPE "L" FOUNDATION.  
NOTE: POLES (A), (C), AND (D), CHANGE ITEM 13 TO IT FOR SIGNAL B-14T FOR SIDE BRACKET MOUNT.

SEE SHEET T1 FOR NEW M-4T PEDESTRIAN SIGNAL ASSEMBLY

*SHAFTS & LUMINAIRES INSTALLED ONLY  
T.S. WIRE PULLED  
ALL OTHER T.S. EQ. DELIVERED  
TO CUU*

*Ronald Jay Rader*



**TRAFFIC SIGNAL GENERAL NOTES  
CITY OF LAS VEGAS**

- THE CONTRACTOR SHALL BE RESPONSIBLE FOR DAMAGE TO ALL EXISTING UTILITIES. THE LOCATIONS OF UNDERGROUND UTILITIES, AS SHOWN ON THE PLANS, ARE APPROXIMATE ONLY. IT SHALL BE THE RESPONSIBILITY OF THE CONTRACTOR TO CONTACT THE FOLLOWING UTILITIES TO VERIFY THE EXACT LOCATION AND DEPTH. THE UTILITY SHALL BE NOTIFIED AT LEAST 72 HOURS PRIOR TO COMMENCEMENT OF CONSTRUCTION.  
CALL-BEFORE-YOU-DIG 1-800-227-2600  
C.L.V. TRAFFIC ENGINEERING 224-6331  
FIELD OPERATIONS 567-5307  
NEVADA POWER 224-6611  
LVACTS 224-6611
- ALL CABLE AND WIRING SHALL BE INSTALLED FROM TERMINAL TO TERMINAL WITHOUT SPLICES.
- TRAFFIC SIGNAL CABLE SHALL BE 25 CONDUCTOR, #14 AWG CABLE AND SHALL CONFORM TO IMBA SPEC NO. 20-1. ALL SIGNAL DETECTION WILL BE BY VIDEO. INTERCONNECT CABLE SHALL BE 25 PAIR #22 AWG SHIELDED PER REA SPEC. PE-34.
- CAMERA TERMINATIONS SHALL BE WIRED IN THE CONTROLLER CABINET TO THE PROPER PHASES. CAM 1 - POLE A, CAM 2 - POLE D, CAM 3 - POLE C AND CAM 4 - POLE B.
- ALL PULL BOXES SHALL BE PRECAST REINFORCED CONCRETE AND HAVE CAST IRON COVERS MARKED "TRAFFIC SIGNALS" FOR TRAFFIC SIGNAL AND INTERCONNECT WIRING.
- THE ROUTING AND TERMINATION OF CONDUITS AND THE PLACING OF POLES AND CABINETS SHALL BE AS INDICATED ON THE PLANS. ALL CHANGES SHALL BE APPROVED BY THE TRAFFIC ENGINEER.
- ALL SIGNAL POLES SHALL CONFORM TO UNIFORM STANDARD DRAWINGS 404.406 SHEETS 1 THROUGH 6.
- THE FINAL LOCATION OF POLES AND VIDEO DETECTION CAMERAS SHALL BE DETERMINED AT THE TIME OF CONSTRUCTION BY THE TRAFFIC ENGINEER.
- ALL PEDESTRIAN SIGNAL HEADS SHALL BE HANDMAN SYMBOL. PEDESTRIAN SIGNALS SHALL BE ILLUMINATED BY INCANDESCENT LAMPS.
- ALL PEDESTRIAN PUSH BUTTON SIGNS SHALL BE 9"x12" WITH FULL MOUNTING BRACKET AND ADA COMPATIBLE.
- EACH NEW MAST ARM SHALL BE SET PERPENDICULAR TO THE INTERSECTION APPROACH THAT FACES THE TRAFFIC SIGNALS ON THAT MAST ARM.
- EACH INTERSECTION LUMINAIRE SHALL BE FUSED SEPARATELY IN THE CONTROLLER CABINET USING AN IN-LINE FUSEHOLDER.
- INTERSECTION LIGHTING SHALL CONSIST OF 400 MATT H.P.S. LUMINAIRES WITH ANSI/IES M.C. III DISTRIBUTION, INTEGRAL PHOTOELECTRIC (PE) CONTROL, 120 VOLT MAGNETIC REGULATING BALLAST, AND GLASS LENS WITH CHARCOAL FILTER; O.E. No. M4AC40S126M32 OR APPROVED SUBSTITUTE.
- LUMINAIRE ARMS SHALL PROVIDE FOR 35' MOUNTING HEIGHT.
- OPTICAL DETECTORS SHALL BE MOUNTED ON TOP OF THE 5 SECTION SIGNAL HEADS, AS SHOWN IN THE DRAWINGS. THEY MUST BE COMPATIBLE TO THE OPTICAL DETECTORS ALREADY IN USE IN THE CITY. REFER TO CITY OF LAS VEGAS STANDARD SPECIFICATIONS.
- VIDEO DETECTION EQUIPMENT SHALL BE AS PER CITY OF LAS VEGAS STANDARD SPECIFICATIONS AND MANUFACTURER'S SPECIFICATIONS. FURNISH RG-6, 75 OHM COAXIAL CABLE FOR THE VIDEO SIGNAL, AND 3-CONDUCTOR NO. 18 POWER CABLE TO EACH OF FOUR (4) CAMERA LOCATIONS. SEE PROJECT SPECIFICATIONS.
- ALL TRAFFIC SIGNAL HEADS SHALL HAVE 12" DIA. GLASS LENSES, AND LOWERED BACKPLATES. ALL RED INDICATIONS SHALL BE LED'S.
- BLOCK No. AND ILLUMINATED DOUBLE-FACED STREET NAME SIGNS SHALL CONFORM TO STANDARD DRAWINGS 404.416 AND 404.417, AND WIRED TO THE LUMINAIRE PHOTOCELL FOR CONTROL. ILLUMINATED PANEL SHALL BE AS SHOWN IN DETAIL 2 ON SHEET T1.
- THE SIGNAL HEAD TENON PLACEMENT SHALL BE VERIFIED BY THE CITY OF LAS VEGAS TRAFFIC ENGINEER PRIOR TO MANUFACTURE OF THE MAST ARMS.
- THE CABINET SHALL INCLUDE AN UNINTERRUPTIBLE POWER SUPPLY SYSTEM (UPS). SEE SUBSECTION 625T.02.14 OF THE SUPPLEMENTAL SPECIFICATIONS.
- SIGNAL CONTROLLER TO BE YEAR 2000 COMPLIANT.

**ELECTRICAL SITE PLAN**

SCALE: 1"=20'-0"

SEE NOTE 16

Copyright 1996 by T. J. Krob Consulting Engineers, Inc.

CONDUIT AND WIRE SCHEDULE	FROM	TO	VIA CONDUIT													
			1	2	3	4	5	6	7	8	9	10	11	12	13	14
484 THW 1#5 GRND	METER PEDESTAL	CONTROLLER														
25 COND.	CONTROLLER	POLE A														
25 COND.	CONTROLLER	POLE B														
25 COND.	CONTROLLER	POLE C														
25 COND.	CONTROLLER	POLE D														
25 COND.	CONTROLLER	POLE E														
2#10 THW	CONTROLLER	POLE A														
2#10 THW	CONTROLLER	POLE B														
2#10 THW	CONTROLLER	POLE C														
2#10 THW	CONTROLLER	POLE D														
PRE-EMPTION CABLE	CONTROLLER	POLE A														
PRE-EMPTION CABLE	CONTROLLER	POLE D														
CAMERA PWR CABLE	CONTROLLER	POLE A														
CAMERA PWR CABLE	CONTROLLER	POLE B														
CAMERA PWR CABLE	CONTROLLER	POLE C														
CAMERA PWR CABLE	CONTROLLER	POLE D														
CAMERA VIDEO CABLE	CONTROLLER	POLE A														
CAMERA VIDEO CABLE	CONTROLLER	POLE B														
CAMERA VIDEO CABLE	CONTROLLER	POLE C														
CAMERA VIDEO CABLE	CONTROLLER	POLE D														
CONDUIT SIZE			(2) 2"	(2) 3"	(2) 3"	(2) 3"	(2) 3"	(2) 3"	(2) 3"	(2) 3"	(2) 3"	(2) 3"	(2) 3"	(2) 3"	(2) 3"	(2) 3"

NOTE: INCLUDE IN EACH CONDUIT A #6 GREEN GROUNDING CONDUCTOR

CITY OF LAS VEGAS  
731 SOUTH FOURTH STREET  
LAS VEGAS, NEVADA 89101

ELECTRICAL SITE PLAN  
BUFFALO AND CRAIG ROAD

CRAIG ROAD  
IMPROVEMENTS  
BID. NO. 00:1730:23

SCALE: AS SHOWN

PROFESSIONAL ENGINEER  
HOWARD D. WILLIAMS  
ELECTRICAL  
No. 2023  
1/24/2000

SHEET T5  
25 OF 155 SHEETS  
DRAWING NO. 107-V3048

**T. J. KROB** CONSULTING ENGINEERS, INC.  
7151 CASCADE VALLEY COURT SUITE 200  
LAS VEGAS, NEVADA 89128  
(702) 871-3621  
ELECTRICAL ENGINEERING