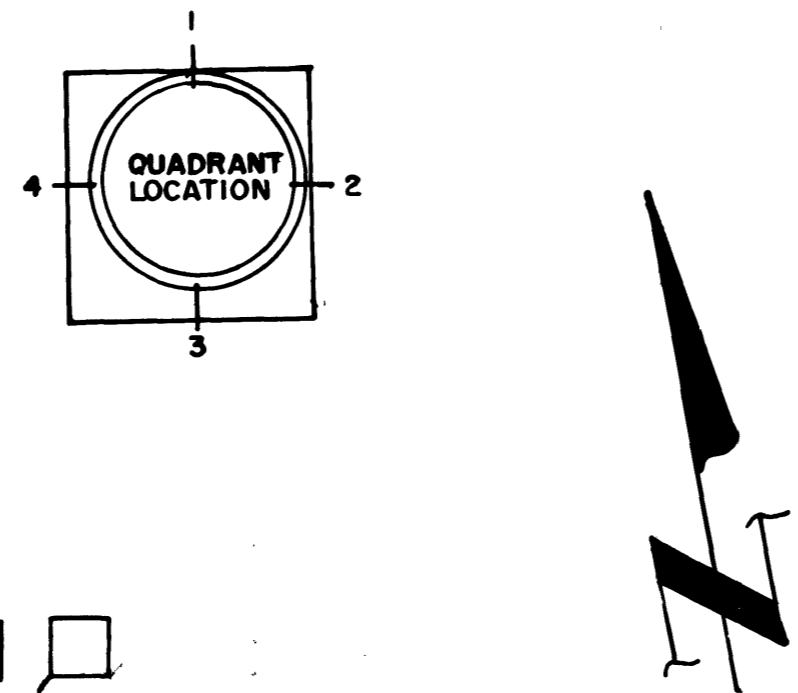
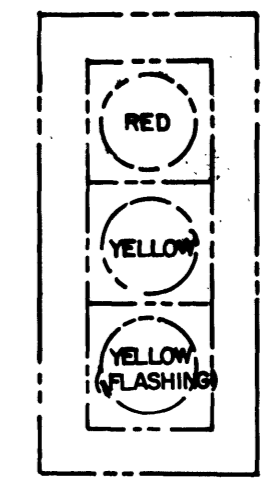
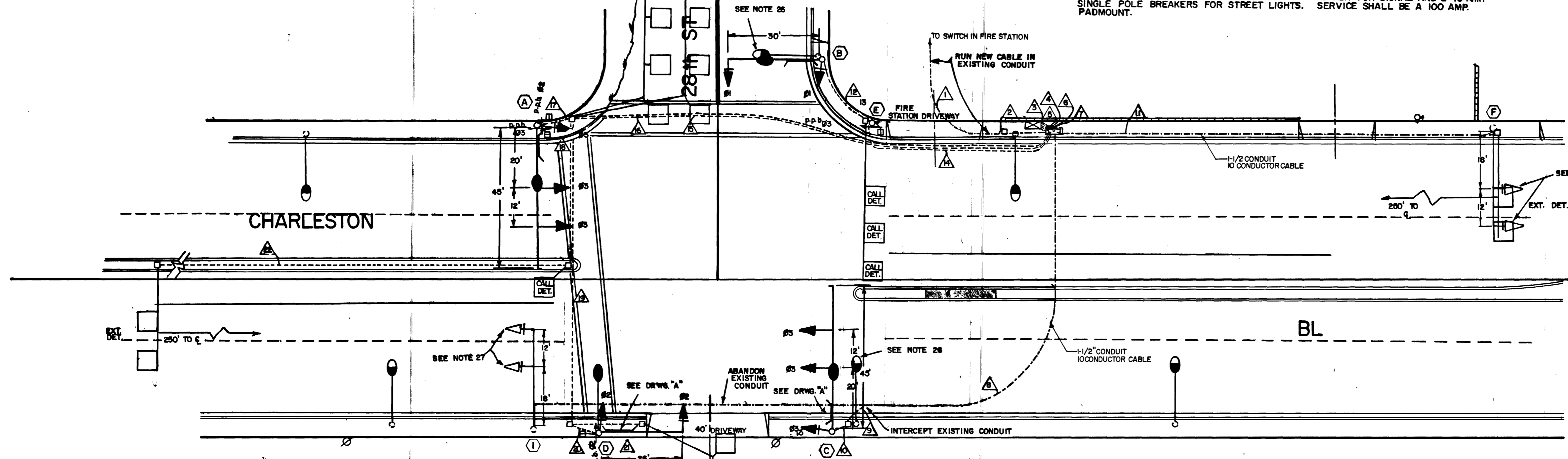


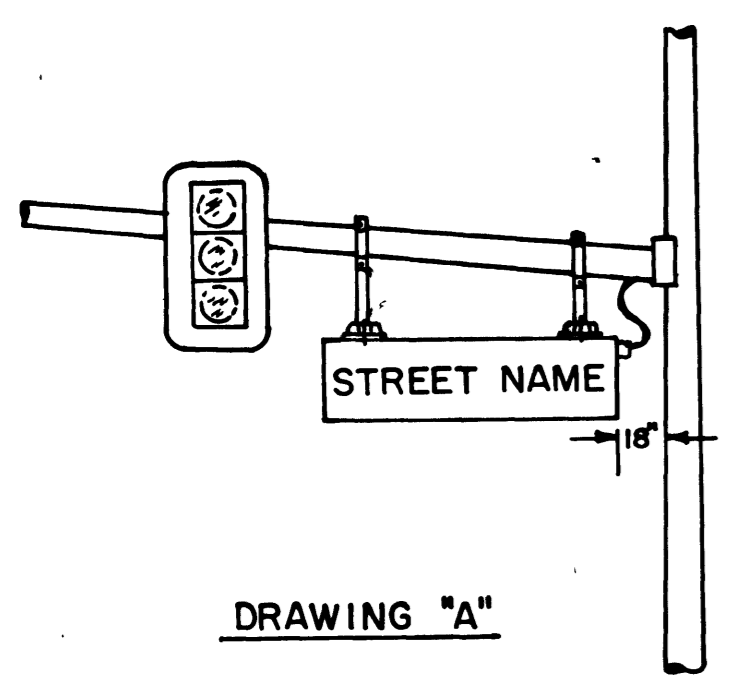
POLE SCHEDULE													
NO.	STATION	GA.	TYPE	SIGNAL ARM		SIGNALS (VEH)		SIGNALS (PED)		PED. PUSH BUTTON			
				QUAD.	LENGTH	QUAD.	LENGTH	QUAD.	TYPE	QUAD.	MOUNTING	QUAD.	ARROW
(A)			XX	3	45'	3	15'	MA	M-2(2)	1	W-ST	2	LT
(B)			XX	4	30'	4	15'	MA	M-2			3	RT
(C)			XX	1	45'	1	15'	MA	M-2(2)				
(D)			XX	2	25'	2	15'	MA	M-2	3	W-OT	4	LT
(E)			IB							TOP	W-IT	3	LT
(F)			EXISTING ( FIRE SIGNAL )										



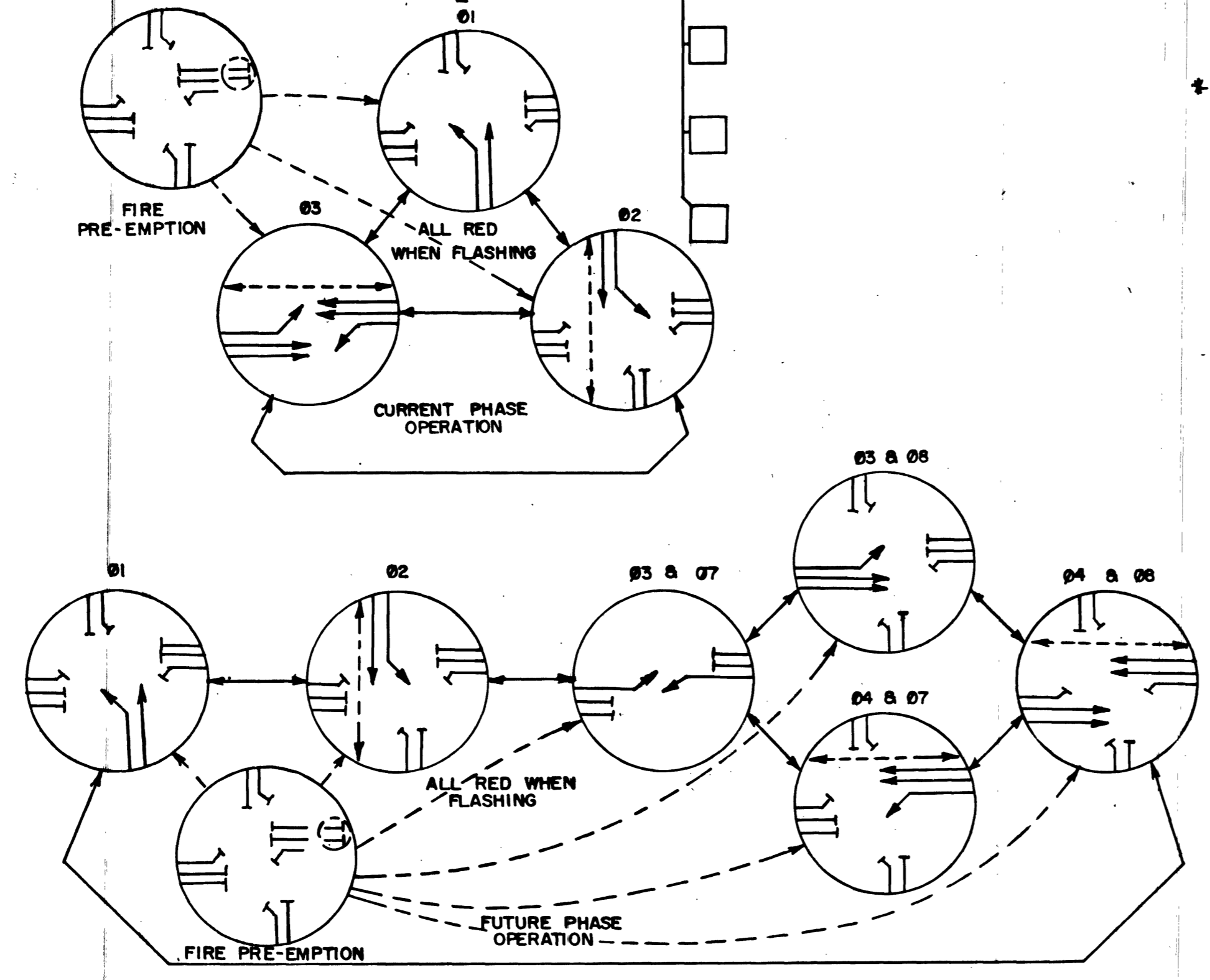
- NOTES:
- CHECK CONDUIT & CABLE SCHEDULE FOR CONDUIT, CABLE, AND WIRE SIZE.
  - THE ROUTING AND TERMINATION OF CONDUITS AND THE PLACING OF POLES AND CABINETS SHALL BE AS INDICATED ON PLANS. ALL CHANGES SHALL BE APPROVED BY THE TRAFFIC ENGINEER.
  - LINE SIDE OF METER TO BE WIRED WITH THREE #2 A.W.G. T.H.W. LOAD SIDE TO BE WIRED WITH FOUR #4 A.W.G. (THREE BLACK AND ONE WHITE), AND ONE GREEN #8 A.W.G.
  - SIGNAL CABLE SHALL BE A 10 & 20 CONDUCTOR #14 A.W.G. CABLE, I.M.S.A. SPEC. 20-1.
  - CONTROLLER SHALL BE HOUSED IN A TYPE "R" CABINET WITH EXHAUST FAN AND THERMOSTAT CONTROL.
  - CABINET SHALL BE PAINTED WHITE INSIDE AND OUT.
  - ALL NECESSARY AMPLIFIER UNITS, MODULES, LIGHT CONTROL UNITS, SWITCHES, FLASHERS, ETC., SHALL BE WIRED INTO CABINET TO ACTIVATE THE THREE PHASE OPERATION AS SHOWN IN DIAGRAM. INCLUDE WIRING FOR FUTURE SIX PHASE OPERATION.
  - EACH LOOP DETECTOR LEAD-IN REPRESENTS A SEPARATE AMPLIFIED UNIT REQUIRED. (6 REQUIRED)
  - EACH LOOP CABLE IN SHALL BE ONE TWISTED PAIR OF #2 A.W.G. CABLE, I.M.S.A. SPEC. 19-2.
  - LOOP DETECTORS SHALL BE 6' X 6' UNLESS SPECIFIED DIFFERENTLY AND LOCATED BY THE TRAFFIC ENGINEER.
  - ALL CONDUIT SHALL BE 2" UNLESS OTHERWISE INDICATED.
  - ALL CABLE AND WIRING SHALL BE INSTALLED TERMINAL TO TERMINAL, NO SPLICES ALLOWED.
  - ALL SIGNAL POLES SHALL CONFORM TO C.L.V. STANDARD SPEC. 404.402 & 404.406, SHTS. 1 & 2.
  - ALL SIGNAL LENSES SHALL BE 12"
  - SERVICE SHALL HAVE 1-60 AMP SINGLE POLE BREAKER FOR SIGNAL AND 2-40 AMP SINGLE POLE BREAKERS FOR STREET LIGHTS. SERVICE SHALL BE A 100 AMP PADMOUNT.
  - THE CONTRACTOR SHALL BE RESPONSIBLE DAMAGE TO EXISTING UNDERGROUND UTILITIES.
  - EACH STREET LIGHT LUMINAIRE SHALL BE FUSED IN CABINET USING IN-LINE FUSEHOLDERS.
  - ALL PEDESTRIAN PUSH BUTTON SIGNS SHALL BE 9" X 12" WITH FULL MOUNTING BRACKET. HAND-MAN PEDESTRIAN SIGNALS SHALL BE USED. SIGNS SHALL ALSO BE HAND-MAN.
  - WIRING FOR PUSH BUTTONS SHALL BE #14 A.W.G. THWN 5/64 INSULATION.
  - LUMINAIRES SHALL BE 400 WATT HIGH PRESSURE SODIUM CUTOFF (S.E. M-400A) WITH MC-III DISTRIBUTION AND INDIVIDUAL RE. CONTROL AND BUILT IN BALLAST.
  - CALL DETECTORS TO BE CONNECTED DURING PHASE RED FOR ONE DETECTION AND THEN DISCONNECTED.
  - LOOP DETECTORS TO BE LOCATED BY C.L.V. IN THE FIELD.
  - POLES "A", "B", "C", & "D" SHALL HAVE INTERNALLY ILLUMINATED STREET NAME SIGNS. THE SIGNS WILL BE WIRED TO THE LUMINAIRE PHOTO CELL FOR CONTROL.
  - THE STREET NAME SIGNS ON POLES "A" & "C" SHALL READ "28TH ST". THE STREET NAME SIGNS ON POLES "B" & "D" SHALL READ "CHARLESTON BL".
  - OPTI COM WIRE SHALL BE A BELDEN #8723 CABLE.
  - REMOVE EXISTING POLE AND LUMINAIRE, RETURN TO CHIEF OF ELECTRICAL SERVICES, (GEORGE FERRIS) AT 3100 EAST BONANZA RD. REPLACE POLE BASE WITH #3 1/2 PULLBOX.
  - POLE AND EQUIPMENT SHALL BE REMOVED AND RETURNED TO BILL MILLER AT THE SIGNAL SHOP, 3100 EAST BONANZA.
  - FIRE PRE-EMPTION SHALL BE PROVIDED, PRE-EMPTION SHALL ADVANCE INTERSECTION TO ALL RED WHERE IT SHALL REMAIN FOR A SELECTED PERIOD (0-60 SEC.). PRE-EMPTION SHALL ALSO CHANGE THE FIRE SIGNAL FROM FLASHING YELLOW TO YELLOW TO RED (SEE DRAWING 'B') FOR THE SAME PERIOD.



DRAWING "B"



DRAWING "A"



CONDUIT & CABLE SCHEDULE									
RUN NO.	FROM	TO	CONDUIT SIZE	SIGNAL CABLE	ILLUMINATED	INTERSECTION	PRE-EMPTION	FLASH	SERVICE
* 1	PULLBOX	FIRE STATION							
* 2	PULLBOX	PULLBOX							
* 3	PULLBOX	CONTROLLER	2"	X	X	XX	X		
* 4	PULLBOX	CONTROLLER	2"	X		XX	X		
* 5	PULLBOX	CONTROLLER	2"	X		XXX	X		
* 6	PULLBOX	CONTROLLER	2"	X			X		
* 7	PULLBOX	PULLBOX	1 1/2"	X			X		
* 8	PULLBOX	PULLBOX	1 1/2"	X			X		
* 9	PULLBOX	POLE "C"	2"	X			X		
* 10	PULLBOX	PULLBOX	1 1/2"			X			
* 11	PULLBOX	POLE "B"	2"	X			X		
* 12	PULLBOX	POLE "E"	2"	X			X		
* 13	PULLBOX	PULLBOX	2"	X	X		X		
* 14	PULLBOX	PULLBOX	2"	X			XXX	X	
* 15	PULLBOX	PULLBOX	2"	X			XX	X	
* 16	PULLBOX	PULLBOX	2"	X			X	X	
* 17	PULLBOX	POLE "D"	2"	X			X	X	
* 18	PULLBOX	PULLBOX	1"				X		
* 19	PULLBOX	PULLBOX	1"				X		

Scale 1" = 20'

Date 5/2/73

W.O. no.

Design by

Approved by Supervisor of Traffic

Approved by the Director of Public Services

Date

Date

Revisions

Date

Department of Public Services

Traffic Engineering Division

FIRE SIGNAL

CHARLESTON BLVD. & 28th STREET

Dallas Texas

City of Dallas

Drawing no. 208-V272