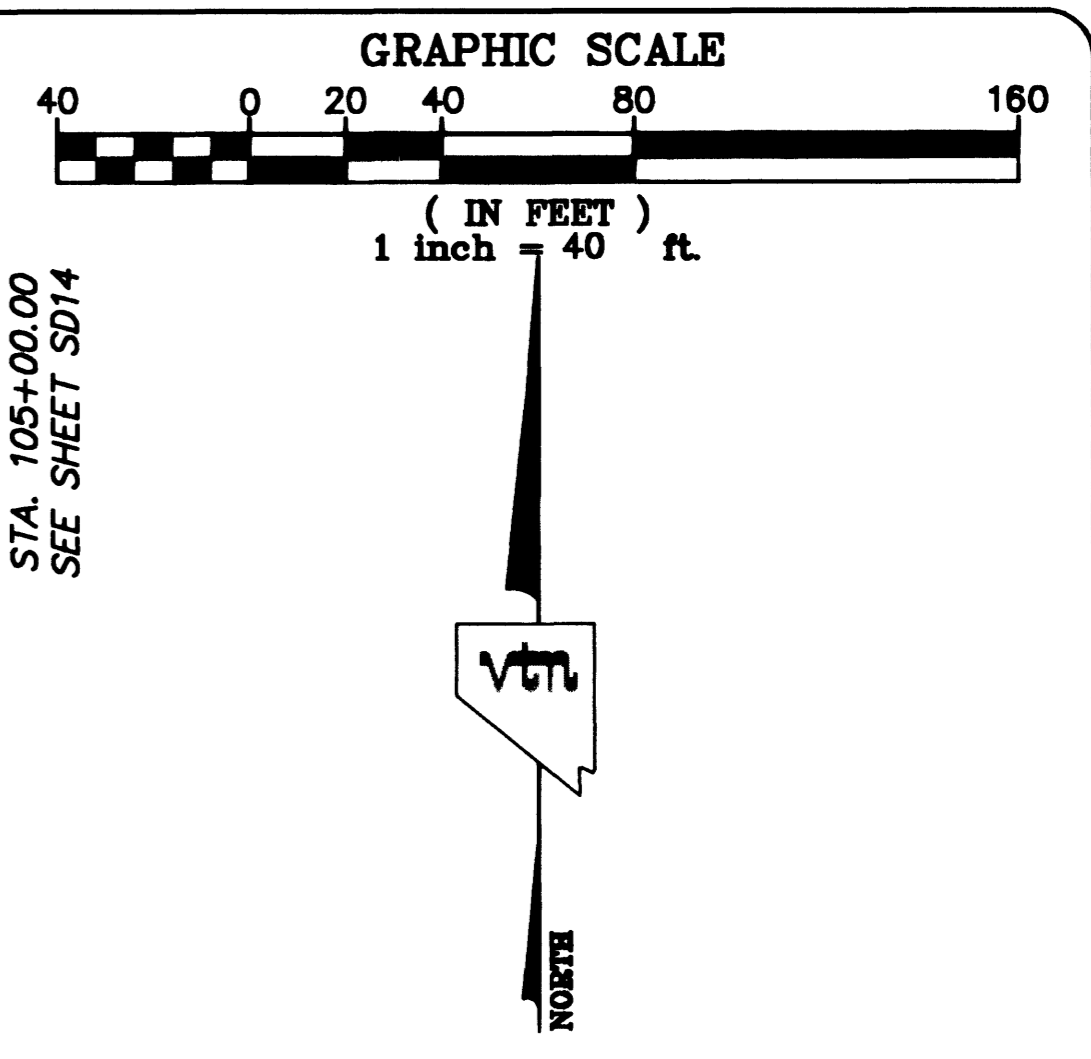
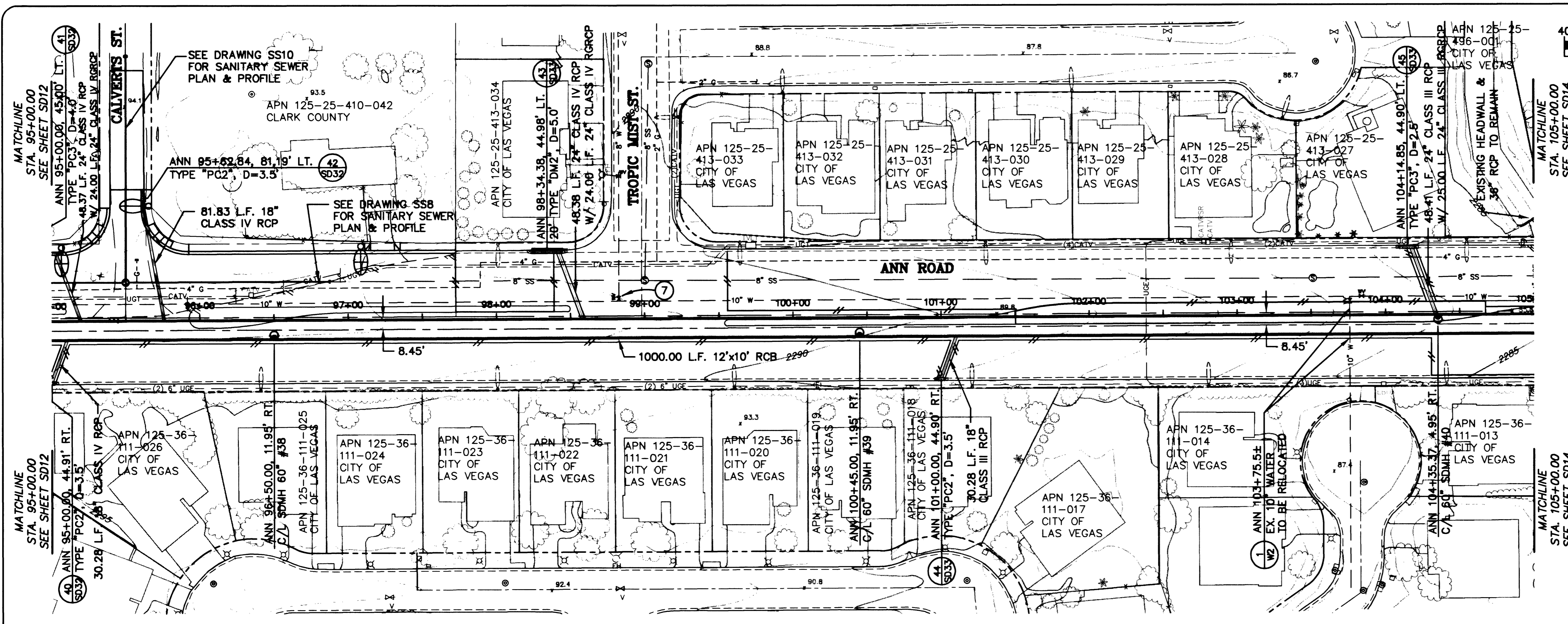


PS "PLT", MS "L",  
 I:\CAD\PROJECTS\5546\5546-SD.DWG



**NOTES:**

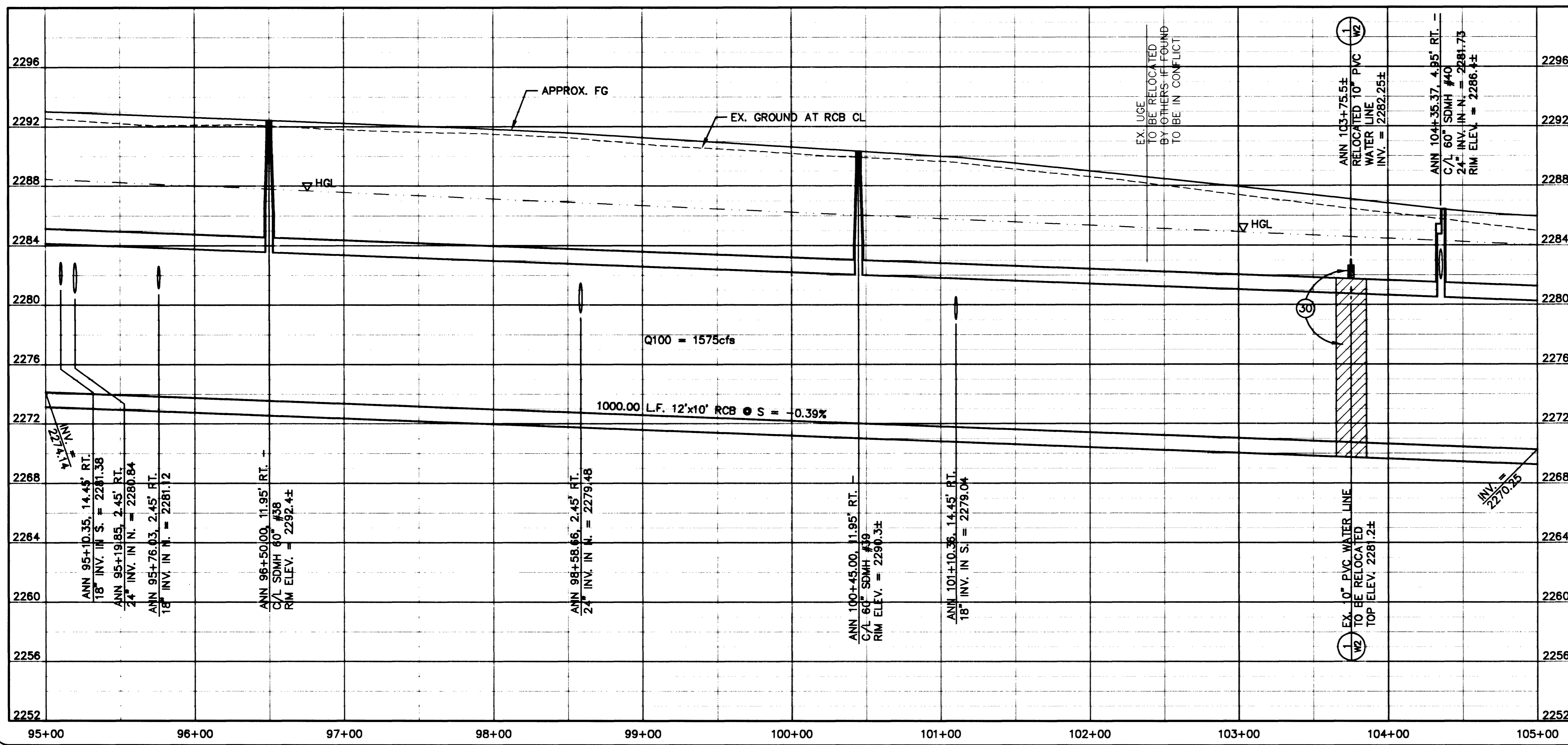
- SEE DRAWING D7 FOR STORM DRAIN MANHOLE SCHEDULE AND DROP INLET SCHEDULE.
- SEE DRAWINGS D8 & D9 FOR DROP INLET DETAILS.
- SEE NOTE 2 ON DRAWING I2 FOR EXISTING UTILITY RELOCATION.
- SEE DRAWING D11 FOR TRENCH DETAILS.

**LEGEND**

□ NEW STORM DRAIN MAIN LINE

**CONSTRUCTION NOTES**

- ⑦ EXISTING WATER VALVE - PROTECT IN PLACE. MUST BE ACCESSIBLE AT ALL TIMES.
- ③① CEMENT SLURRY BACKFILL TO SPRING LINE OF RELOCATED 10" WATER LINE & EPOXY SEAL RCB JOINTS 10' EACH WAY.



**APPROVED**

*Patley* 10/24/01  
 LAS VEGAS VALLEY WATER DISTRICT DATE

Avoid cutting underground utility lines. It's costly.  
 2 working days **Call before you Dig** 1-800-227-2600  
 Underground Service Alert (U.S.A.)

Avoid overhead power line contact.  
 2 working days **Call before you Overhead** 1-702-593-6111  
 Nevada Power Environmental and Safety Services Department

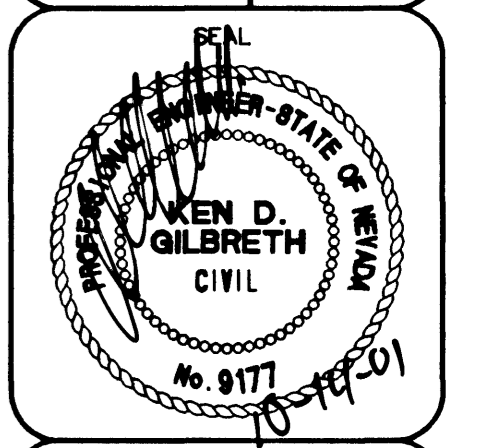
DEPARTMENT OF PUBLIC WORKS  
 CITY OF LAS VEGAS

CONSULTING ENGINEERS • PLANNERS • LAND SURVEYORS  
 2727 SOUTH RAINBOW BOULEVARD  
 LAS VEGAS, NEVADA 89146-5148 PHONE (702) 873-7550 FAX (702) 362-2597

**vtr nevada**

**STORM DRAIN PLAN & PROFILE**  
 STA. 95+00.00 TO STA. 105+00.00  
 ANN ROAD

PROJECT  
 ANN ROAD IMPROVEMENTS  
 US 95 TO FERRELL STREET



NO. NO. 5546  
 BY LS  
 DATE 10/05/01  
 SCALE HORIZ. 1"=40'  
 VERT. 1"=4'

DRAWING SHEET  
 SD13 103 OF 163 SHEETS