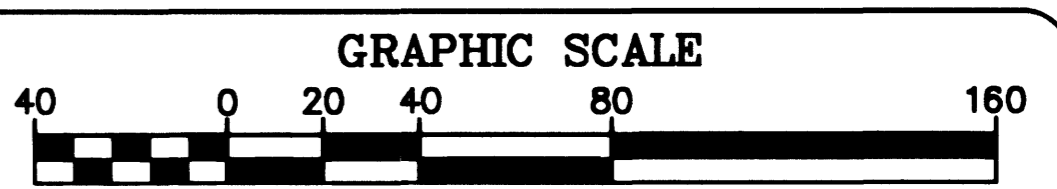
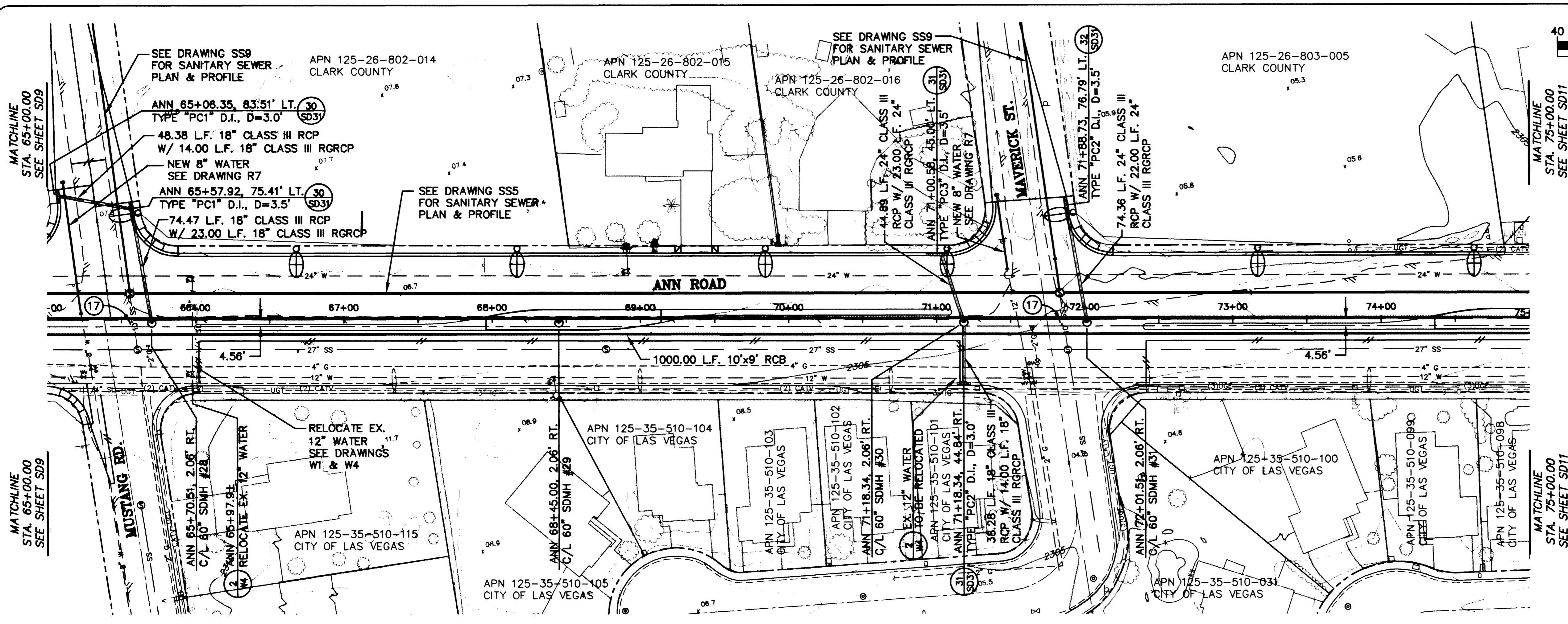


PS: 7/11/11, MS: 7/11/11
 L:\CAD\PLANS\35446\5546-SD.DWG



NOTES:

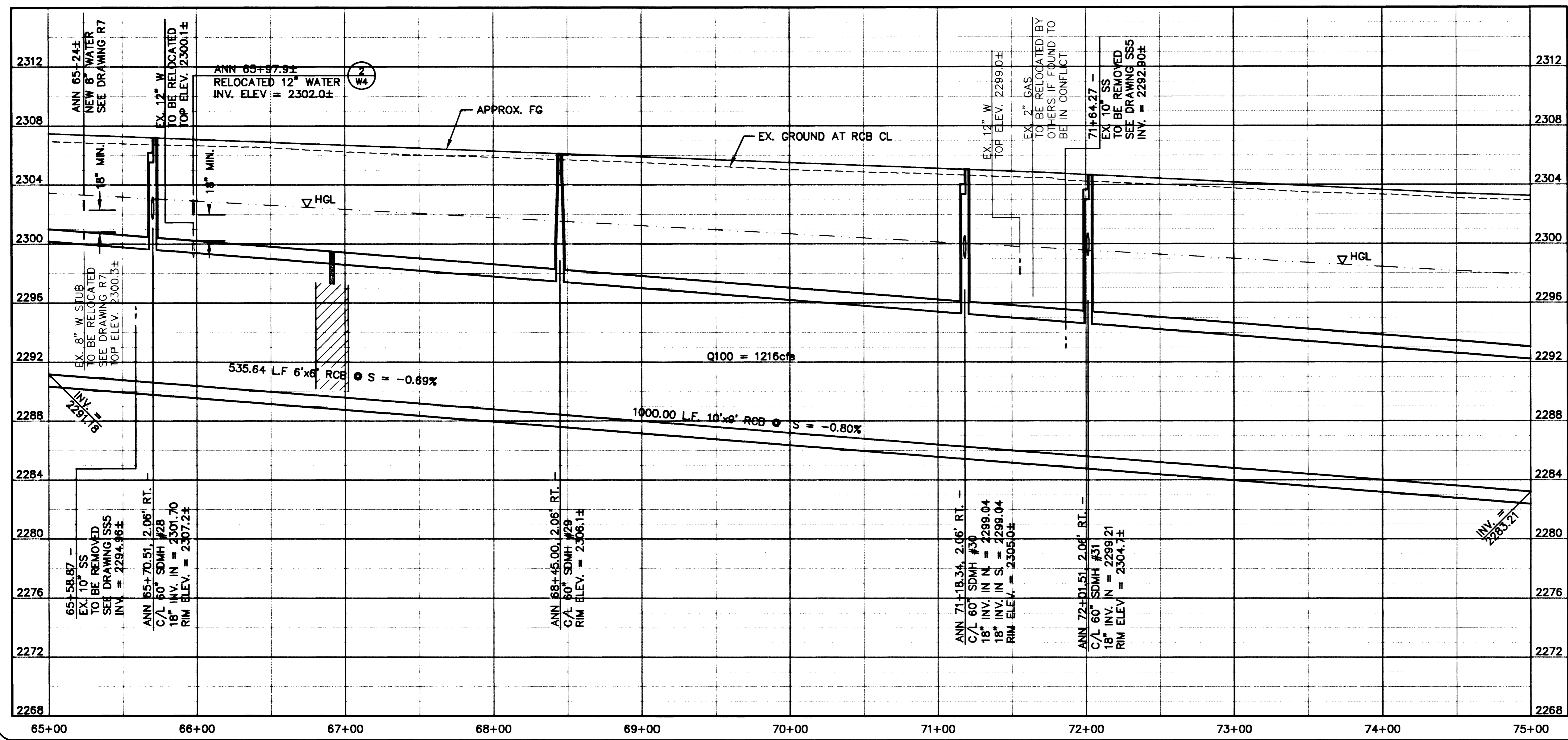
- SEE DRAWING D7 FOR STORM DRAIN MANHOLE SCHEDULE AND DROP INLET SCHEDULE.
- SEE DRAWINGS D8 & D9 FOR DROP INLET DETAILS.
- SEE NOTE 2 ON DRAWING I2 FOR EXISTING UTILITY RELOCATION.
- SEE DRAWING D11 FOR TRENCH DETAILS.

LEGEND

□ NEW STORM DRAIN MAIN LINE

CONSTRUCTION NOTES

- (17) EXISTING 10" SANITARY SEWER TO BE REMOVED, SEE DRAWING SS5



APPROVED
[Signature] 10/24/06
 LAS VEGAS VALLEY WATER DISTRICT DATE

Avoid cutting underground utility lines. It's costly.
 2 working days
Call before you Dig
 1-800-227-2600
 Underground Service Alert (U.S.A.)

Avoid overhead power lines. It's costly.
 2 working days
Call before you Overhead
 1-702-593-6111
 Nevada Power Environment and Safety Services Department

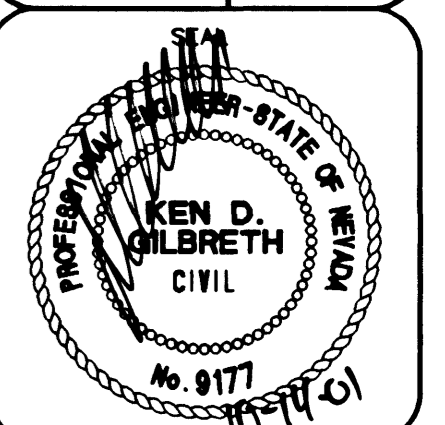
DEPARTMENT OF PUBLIC WORKS
 CITY OF LAS VEGAS

CONSULTING ENGINEERS • PLANNERS • LAND SURVEYORS
 2727 SOUTH RAINBOW BOULEVARD
 LAS VEGAS, NEVADA 89146-5148 PHONE (702) 873-7550 FAX (702) 362-2597

vtn nevada

STORM DRAIN PLAN & PROFILE
 STA. 65+00.00 TO STA. 75+00.00
 ANN ROAD

PROJECT
 ANN ROAD IMPROVEMENTS
 US 95 TO FERRELL STREET



WO. NO.	5546
BY	TMM
DATE	10/05/01
SCALE	HORIZ. 1"=40' VERT. 1"=4'
DRAWING	SHEET 100 OF 163 SHEETS