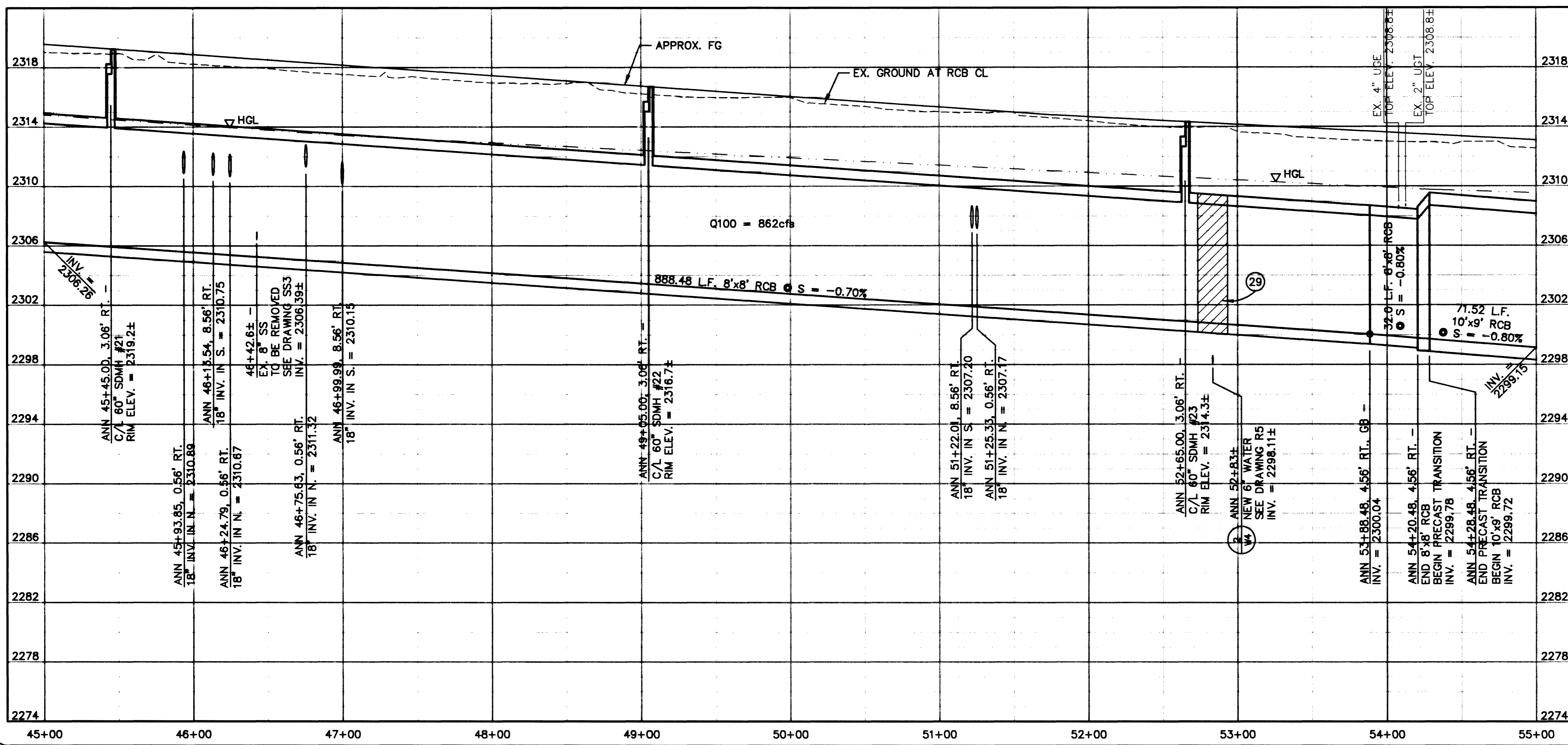


- NOTES:**
- SEE DRAWING D7 FOR STORM DRAIN MANHOLE SCHEDULE AND DROP INLET SCHEDULE.
 - SEE DRAWINGS D8 & D9 FOR DROP INLET DETAILS.
 - SEE NOTE 2 ON DRAWING I2 FOR EXISTING UTILITY RELOCATION.
 - SEE DRAWING D11 FOR TRENCH DETAILS.
- LEGEND**
- NEW STORM DRAIN MAIN LINE

CONSTRUCTION NOTES

- (14) EXISTING 8" SANITARY SEWER TO BE REMOVED, SEE DRAWING SS3.
- (29) NEW WATER LINE, EPOXY SEAL RCB JOINTS 10' EACH WAY.



APPROVED

Ken D. Gilbreth 10/24/01
LAS VEGAS VALLEY WATER DISTRICT DATE

Avoid cutting underground utility lines. It's costly.
2 working days **Call before you Dig** 1-800-227-2600
Underground Service Alert (U.S.A.)

Avoid overhead power line contact.
2 working days **Call before you Overhead** 1-702-593-6111
Nevada Power Environmental and Safety Services Department

DEPARTMENT OF PUBLIC WORKS
CITY OF LAS VEGAS

CONSULTING ENGINEERS • PLANNERS • LAND SURVEYORS
2727 SOUTH RAINBOW BOULEVARD
LAS VEGAS, NEVADA 89146-5148 PHONE (702) 873-7550 FAX (702) 362-2597

vtn nevada

TITLE: STORM DRAIN PLAN & PROFILE
STA. 45+00.00 TO STA. 55+00.00
ANN ROAD
PROJECT: ANN ROAD IMPROVEMENTS
US 95 TO FERRELL STREET

NO. NO. 5548
BY LS
DATE 10/05/01
SCALE HORIZ. 1"=40'
VERT. 1"=4'

DRAWING SHEET 98 OF 163 SHEETS

SD8