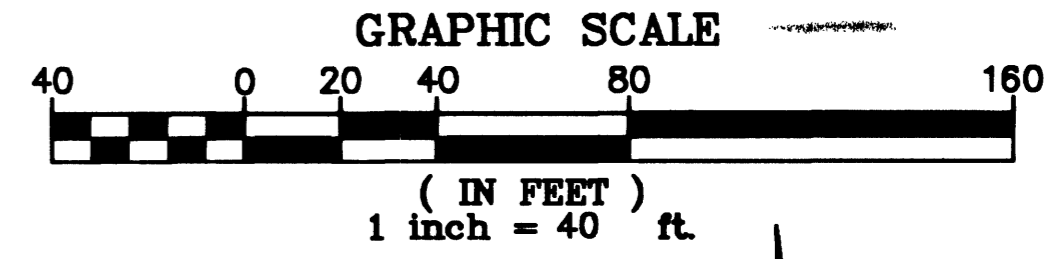
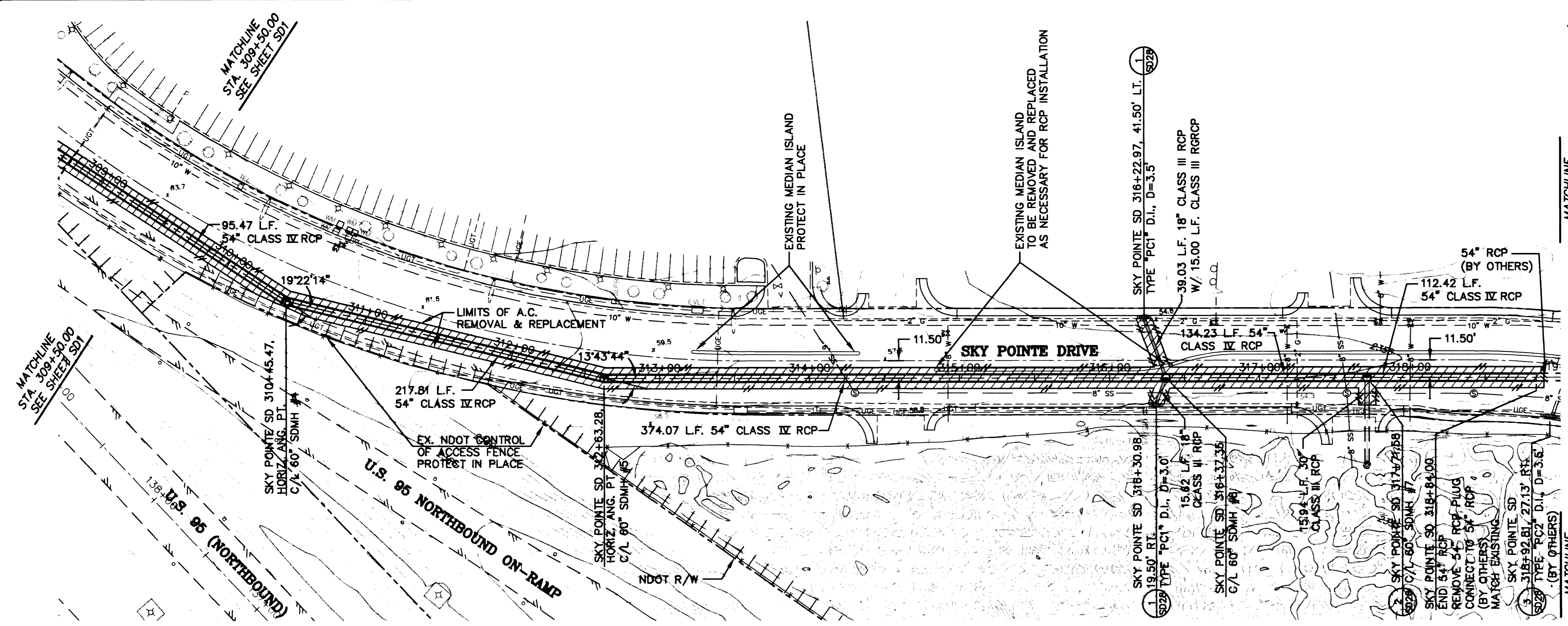


PS "PLT", MS "AZ",
I:\CAD\PROJECTS\5546\5546-SD.DWG



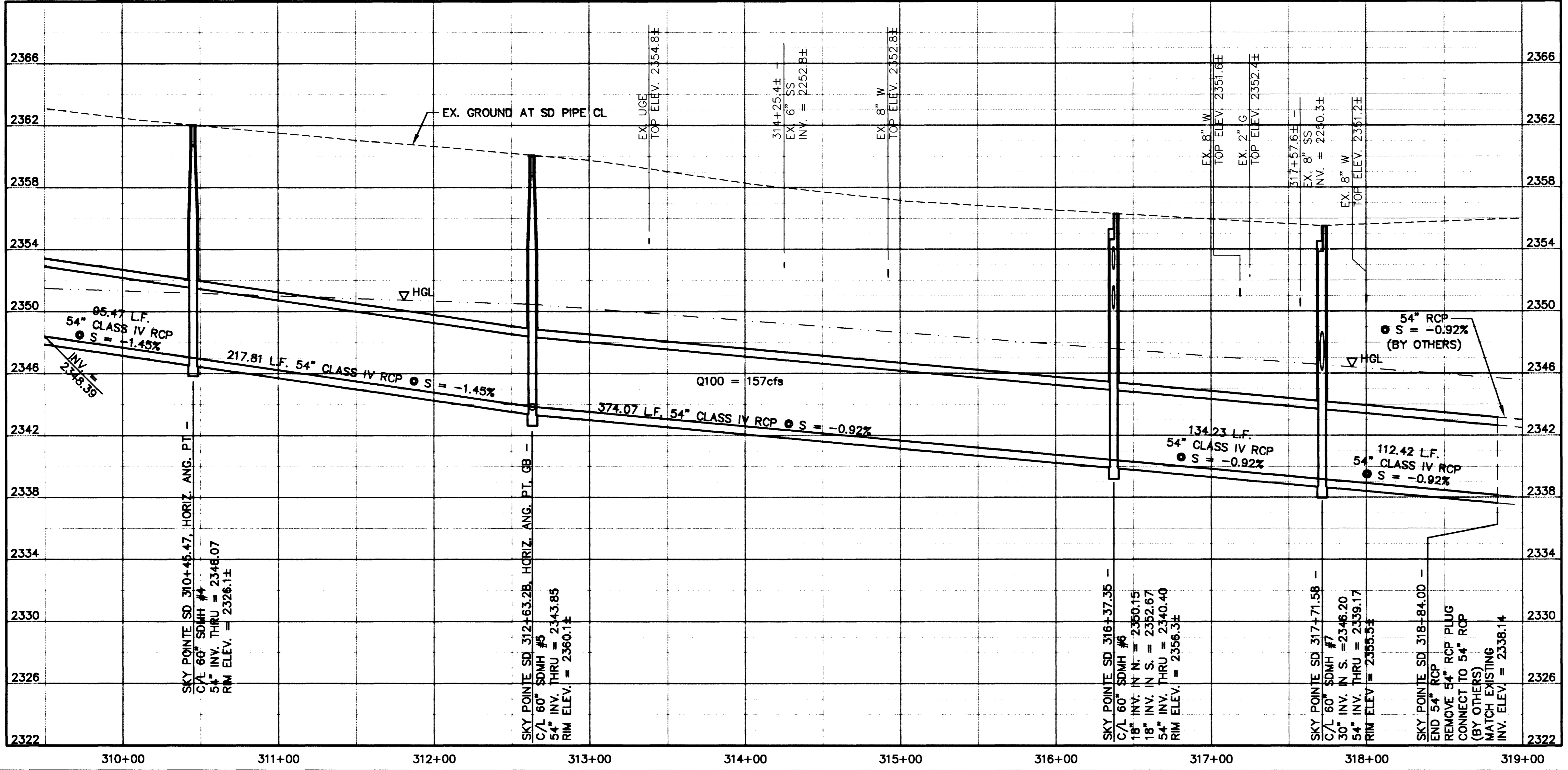
MATCHLINE
STA. 319+00.00
SEE SHEET SD3

- NOTES:
- SEE DRAWING D7 FOR STORM DRAIN MANHOLE SCHEDULE AND DROP INLET SCHEDULE.
 - SEE DRAWINGS D8 & D9 FOR DROP INLET DETAILS.
 - SEE NOTE 2 ON DRAWING I2 FOR EXISTING UTILITY RELOCATION.
 - SEE DRAWING D11 FOR TRENCH DETAILS.

LEGEND

- [Solid Line] NEW STORM DRAIN MAIN LINE
- [Hatched Area] EXISTING A.C. PAVEMENT TO BE REMOVED AND REPLACED

MATCHLINE
STA. 319+00.00
SEE SHEET SD3



APPROVED

[Signature] 10/24/01
LAS VEGAS VALLEY WATER DISTRICT DATE

Avoid cutting underground utility lines. It's costly.
2 working days **Call before you Dig** 1-800-227-2600
Underground Service Alert (USA)

Avoid overhead power line contact.
2 working days **Call before you Overhead** 1-702-593-6111
Nevada Power Environmental and Safety Services Department

TITLE: STORM DRAIN PLAN & PROFILE
STA. 309+50.00 TO STA. 391+00.00
PROJECT: SKY POINTE DRIVE
ANN ROAD IMPROVEMENTS
US 95 TO FERRELL STREET

SEAL
KEN D. GILBRETH
CIVIL
No. 9171

NO. NO. 5546
BY LS
DATE 10/05/01
SCALE: HORIZ. 1"=40'
VERT. 1"=4'
DRAWING SD2 SHEET 92 OF 163 SHEETS

DEPARTMENT OF PUBLIC WORKS
CITY OF LAS VEGAS

CONSULTING ENGINEERS • PLANNERS • LAND SURVEYORS
2727 SOUTH RAINBOW BOULEVARD
LAS VEGAS, NEVADA 89146-5148 PHONE (702) 873-7550 FAX (702) 362-2597

vtm nevada