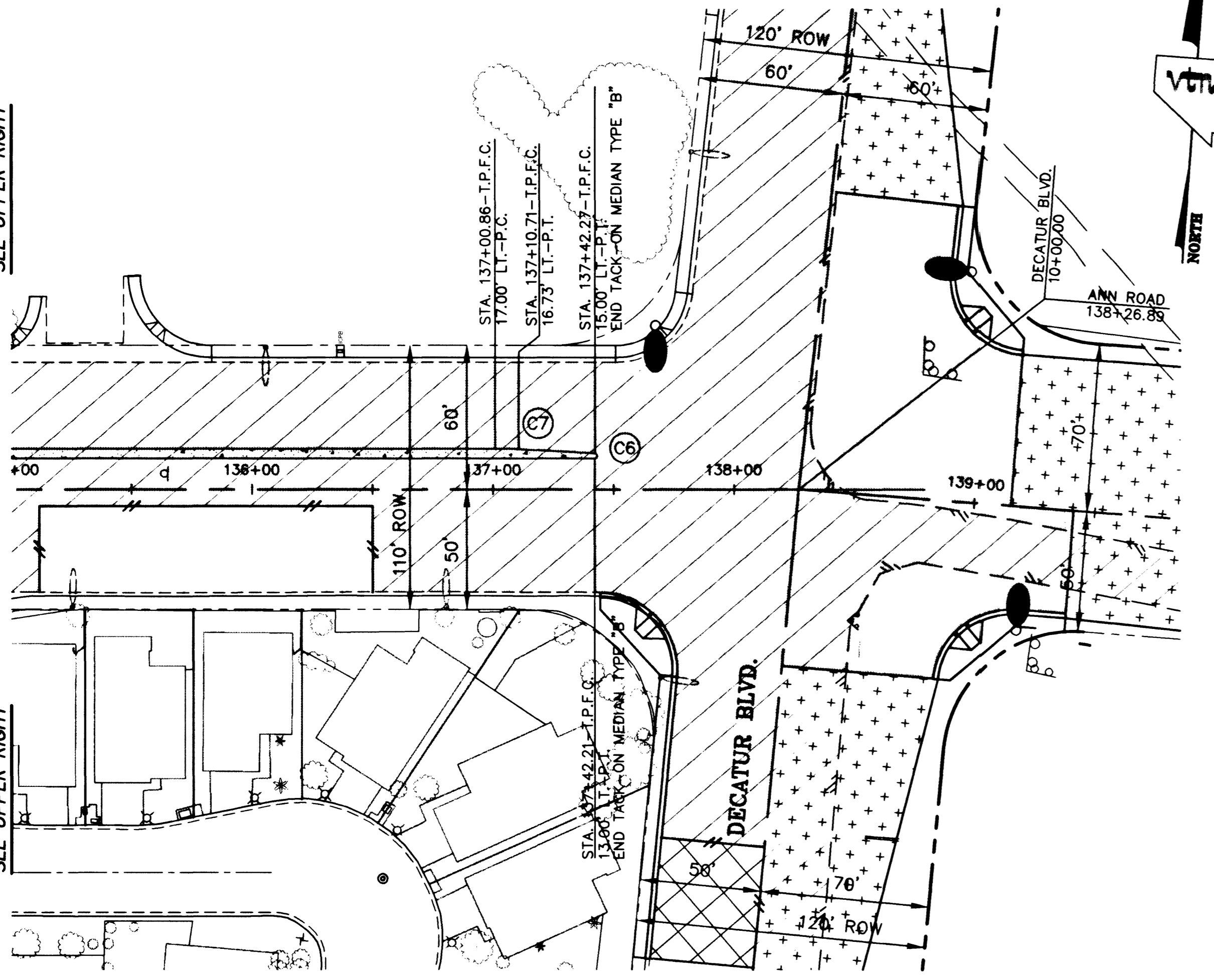
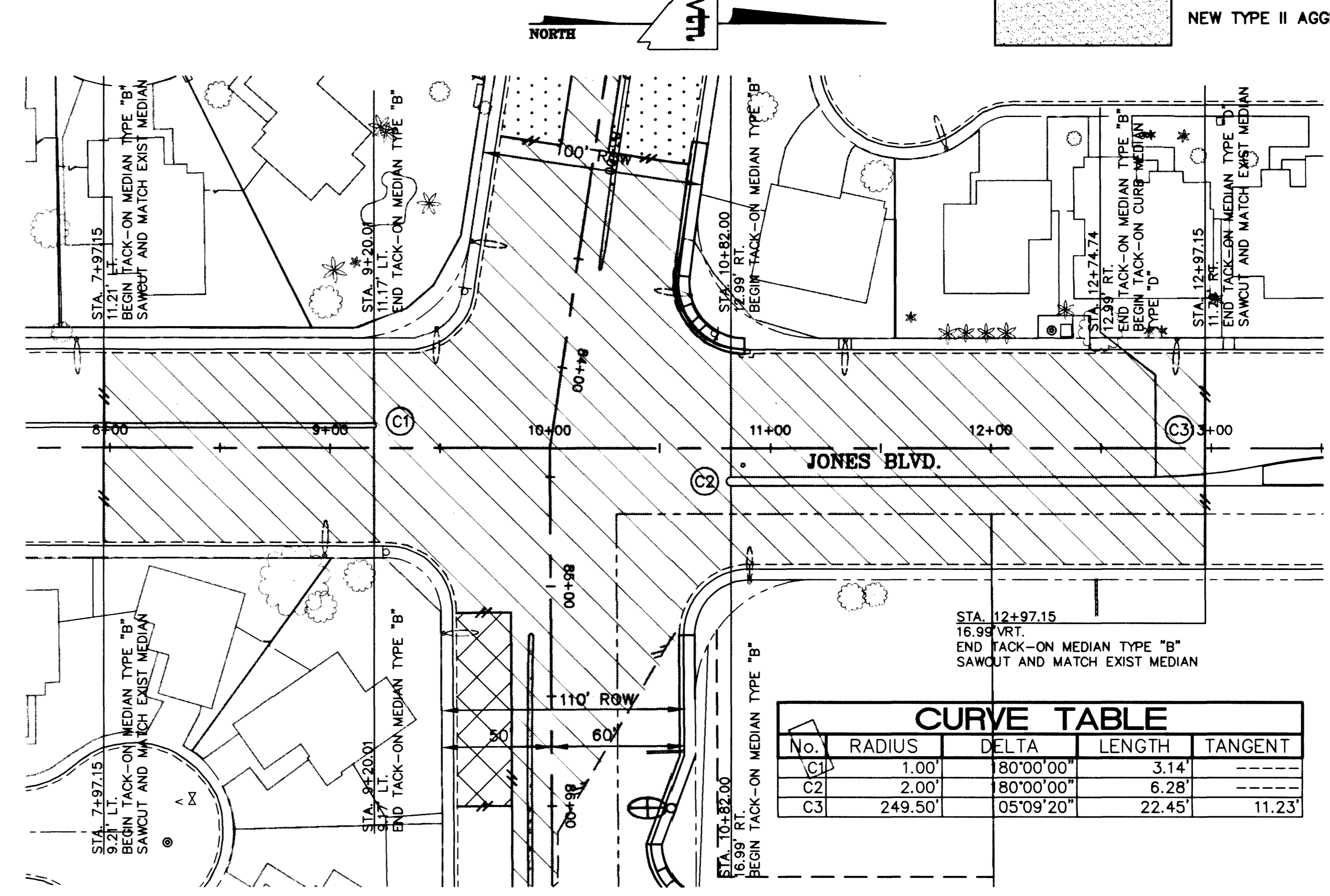


PS: PLOT: MS: DWG: 35736
 I:\CAD\PROJECTS\13546\5546-MED.DWG

MATCHLINE
 STA. 135+00.00
 SEE UPPER RIGHT

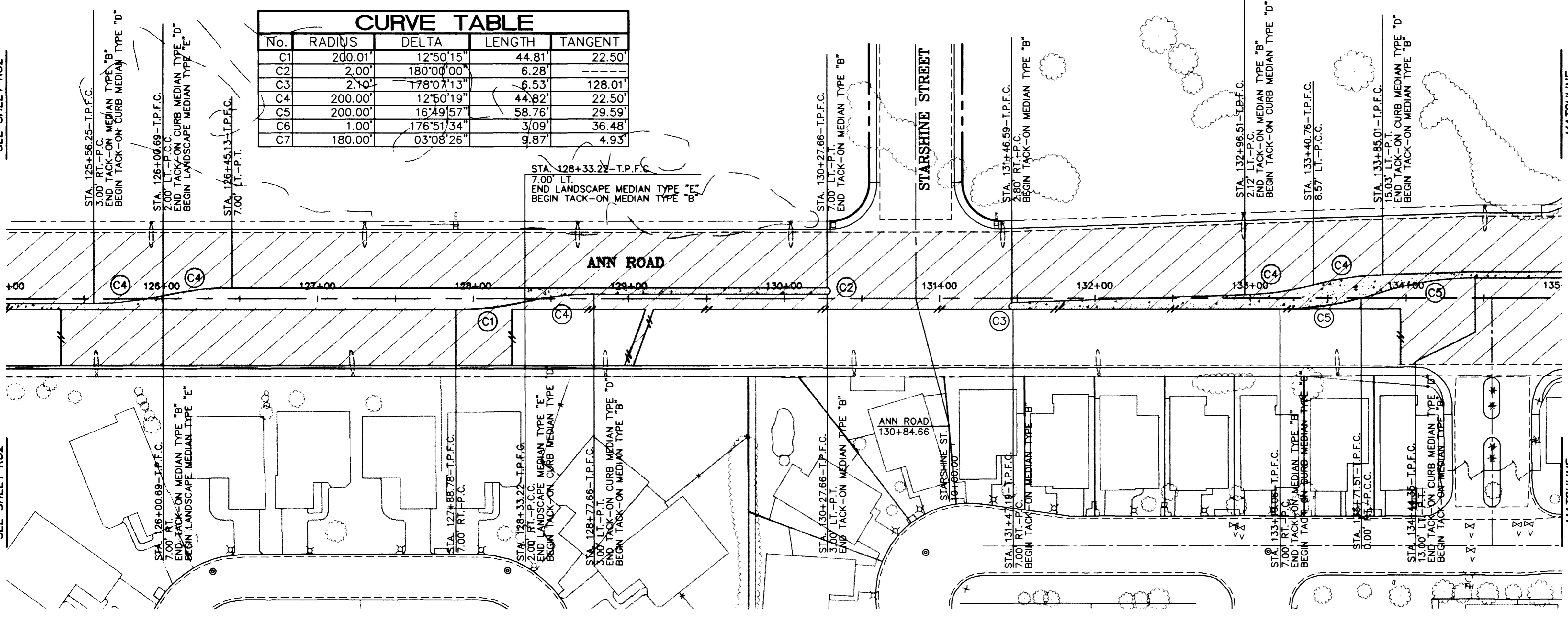


MATCHLINE
 STA. 135+00.00
 SEE UPPER RIGHT



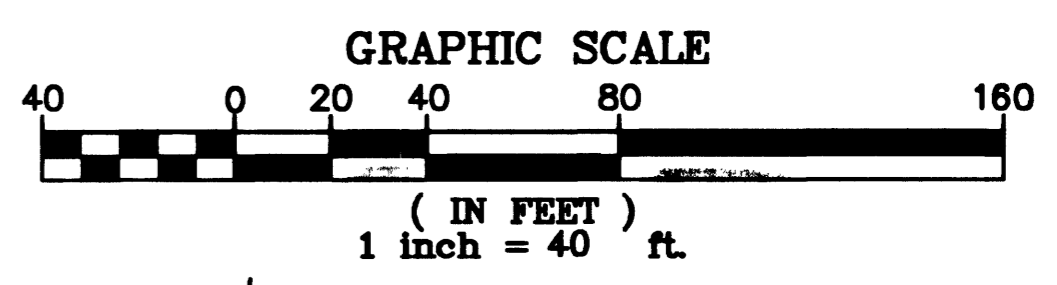
MATCHLINE
 STA. 155+00.00
 SEE BOTTOM LEFT

MATCHLINE
 STA. 125+00.00
 SEE SHEET R32



MATCHLINE
 STA. 135+00.00
 SEE BOTTOM LEFT

No.	RADIUS	DELTA	LENGTH	TANGENT
C1	200.01	12°50'15"	44.81	22.50
C2	2.00	180°00'00"	6.28	
C3	2.00	178°07'13"	6.53	128.01
C4	200.00	12°50'19"	44.82	22.50
C5	200.00	16°49'57"	58.76	29.59
C6	1.00	176°51'34"	3.09	36.48
C7	180.00	03°08'26"	9.87	4.93



MATCHLINE
 STA. 135+00.00
 SEE BOTTOM LEFT

LEGEND

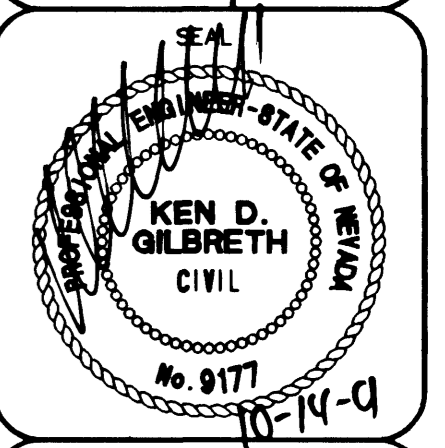
- NEW A.C. PAVEMENT (SEE TYPICAL X-SECTIONS)
- EXISTING A.C. PAVEMENT TO BE REMOVED
- EXISTING A.C. PAVEMENT TO REMAIN WITH NEW 3" MIN. A.C. OVERLAY (SEE TYPICAL X-SECTIONS)
- EXISTING A.C. PAVEMENT TO REMAIN WITH NEW 1 1/2" MIN. A.C. OVERLAY (SEE TYPICAL X-SECTIONS)
- NEW TEMPORARY A.C. (SEE TYPICAL X-SECTIONS)
- NEW CONCRETE MEDIAN
- EXISTING A.C. PAVEMENT TO BE MILLED AND OVERLAYED WITH NEW A.C.
- NEW TYPE II AGGREGATE

MATCHLINE
 STA. 135+00.00
 SEE BOTTOM LEFT

No.	RADIUS	DELTA	LENGTH	TANGENT
C1	1.00	180°00'00"	3.14	
C2	2.00	180°00'00"	6.28	
C3	249.50	05°09'20"	22.45	11.23

TITLE
 MEDIAN ISLAND GEOMETRICS
 STA 125+00.00 TO STA. 145+00.00

PROJECT
 ANN ROAD IMPROVEMENTS
 US 95 TO DECATUR BLVD.



WD. NO. 5546

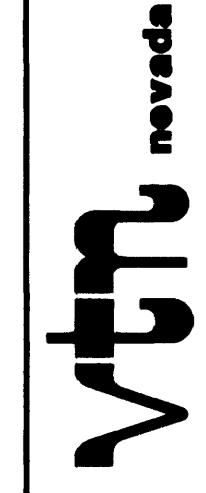
BY LMW

DATE 10/05/01

SCALE HORIZ. 1"=40'
 VERT. NONE

DRAWING SHEET
 R34 OF 80
 SHEETS 163

DEPARTMENT OF PUBLIC WORKS
 CITY OF LAS VEGAS



CONSULTING ENGINEERS • PLANNERS • LAND SURVEYORS
 2727 SOUTH RAINBOW BOULEVARD
 LAS VEGAS, NEVADA 89102-5148 PHONE (702) 873-7550 FAX (702) 362-2597

REV	DATE	BY	REVISION