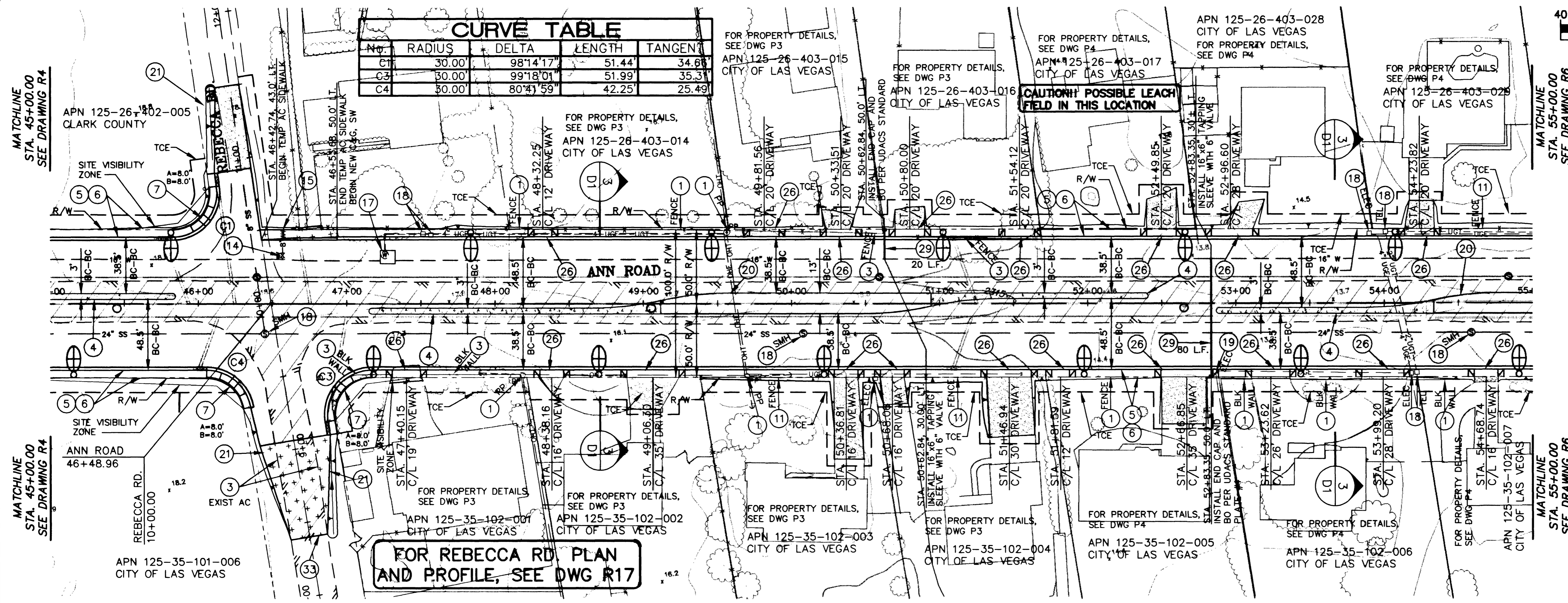
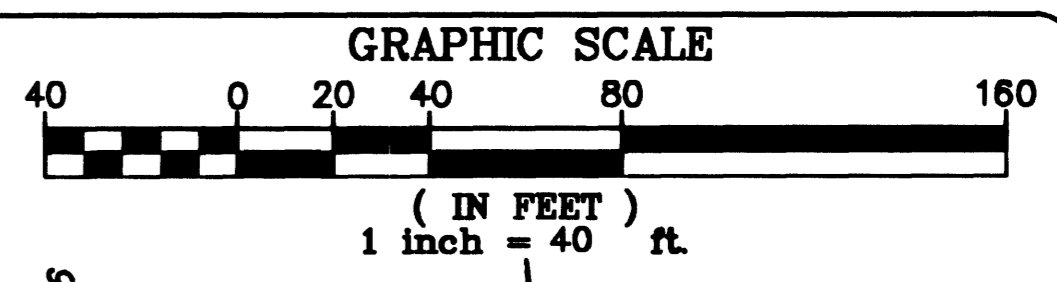


No.	RADIUS	DELTA	LENGTH	TANGENT
C1	30.00	98°14'17"	51.44'	34.68'
C2	30.00	99°18'01"	51.99'	35.31'
C4	50.00	80°31'59"	42.25'	25.49'

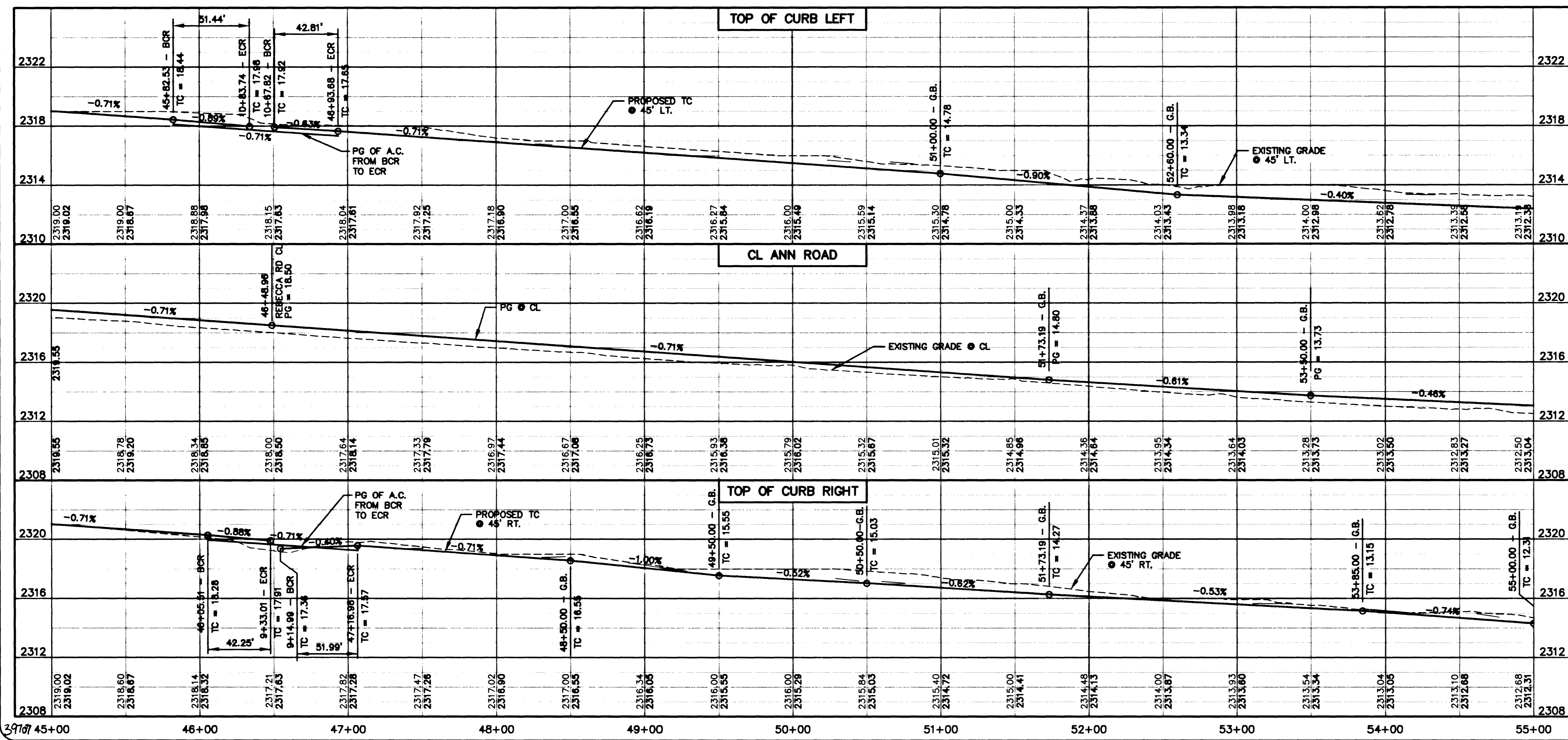


FOR REBECCA RD, PLAN AND PROFILE, SEE DWG R17

- ### LEGEND
- NEW A.C. PAVEMENT (SEE TYPICAL X-SECTIONS)
 - EXISTING A.C. PAVEMENT TO BE REMOVED
 - EXISTING A.C. PAVEMENT TO REMAIN WITH NEW 3" MIN. A.C. OVERLAY (SEE TYPICAL X-SECTIONS)
 - EXISTING A.C. PAVEMENT TO REMAIN WITH NEW 1 1/2" MIN. A.C. OVERLAY (SEE TYPICAL X-SECTIONS)
 - NEW TEMPORARY A.C. (SEE TYPICAL X-SECTIONS)
 - NEW CONCRETE MEDIAN
 - EXISTING A.C. PAVEMENT TO BE MILLED AND OVERLAYED WITH NEW A.C.
 - NEW TYPE II AGGREGATE

CONSTRUCTION NOTES

- 1 PROTECT IN PLACE
- 3 REMOVE
- 4 CONSTRUCT TACK ON MEDIAN ISLAND PER DETAILS ON DWG R35, SEE MEDIAN ISLAND GEOMETRICS DWG'S R28 THRU R34
- 5 CONSTRUCT SIDEWALK PER USD NO. 235
- 6 CONSTRUCT "L" TYPE CURB AND GUTTER PER USD NO. 216
- 7 CONSTRUCT SIDEWALK RAMP CASE I PER USD NO. 235
- 11 REMOVE AND RELOCATE FENCE TO BEHIND PROPERTY LINE
- 12 REMOVE AND RELOCATE BLOCK WALL TO BEHIND PROPERTY LINE
- 14 ADJUST WATER VALVE PER UDACS STANDARD PLATE #8 (VALVES MUST BE ACCESSIBLE AT ALL TIMES)
- 17 ADJUST ACCESS MH & LADDER PER LVWD'S SPECIFICATIONS
- 18 ADJUST TO PROPOSED GRADE
- 19 RELOCATE BY OTHERS, SEE NOTE 2 ON DWG I-2
- 20 CONSTRUCT MEDIAN LANDSCAPE ISLAND PER MEDIAN DETAILS ON DWG R35, SEE MEDIAN ISLAND GEOMETRICS DWG'S R28-R34
- 21 EDGE OF NEW AC PAVEMENT
- 26 CONSTRUCT DRIVEWAY PER USD NO. 223
- 28 CONSTRUCT 8" W. APPROVAL OF THESE PLANS FOR THE WATER STUBOUT INSTALLATION WILL NOT BE CONSTRUED AS A COMMITMENT FOR WATER SERVICE TO THIS PROPERTY. FOR STORM DRAIN CROSSING SEE SD1 THRU SD23, FOR SEWER CROSSINGS SEE SS1 THRU SS10.
- 29 CONSTRUCT 8" W. APPROVAL OF THESE PLANS FOR THE WATER STUBOUT INSTALLATION WILL NOT BE CONSTRUED AS A COMMITMENT FOR WATER SERVICE TO THIS PROPERTY. FOR STORM DRAIN CROSSING SEE SD1 THRU SD23, FOR SEWER CROSSINGS SEE SS1 THRU SS10.
- 33 SAWCUT & MATCH EXISTING AC



APPROVED

 LAS VEGAS WATER DISTRICT DATE 10/24/01

DEPARTMENT OF PUBLIC WORKS
 CITY OF LAS VEGAS

CONSULTING ENGINEERS • PLANNERS • LAND SURVEYORS
 2727 SOUTH RAINBOW BOULEVARD
 LAS VEGAS, NEVADA 89146-5148 PHONE (702) 873-7550 FAX (702) 362-2597

vtm novada

REV	DATE	BY	REVISION

TITLE ROADWAY PLAN & PROFILE
 STA 45+00.00 TO STA. 55+00.00
 ANN ROAD

PROJECT ANN ROAD IMPROVEMENTS
 US 95 TO FERRELL STREET

NO. 9177

NO. NO. 5546
 BY LMW
 DATE 10/05/01
 SCALE HORIZ. 1"=40'
 VERT. 1"=4'
 DRAWING SHEET R5 51 OF 163 SHEETS

PG. "PLT", MS. "E"
 I:\CAD\DWG\MS\5546\5546-D.WG