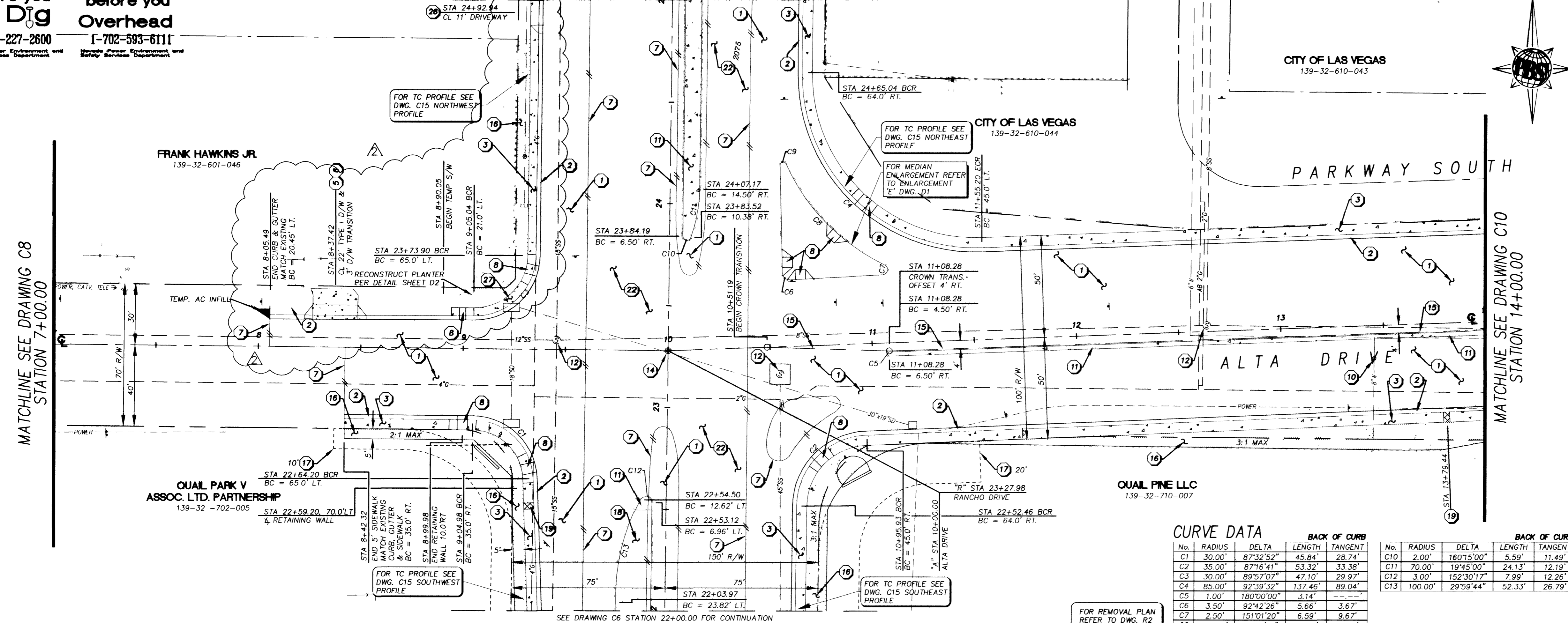


Call before you Dig
1-800-227-2600
Nevada Public Improvement and Safety Services Department

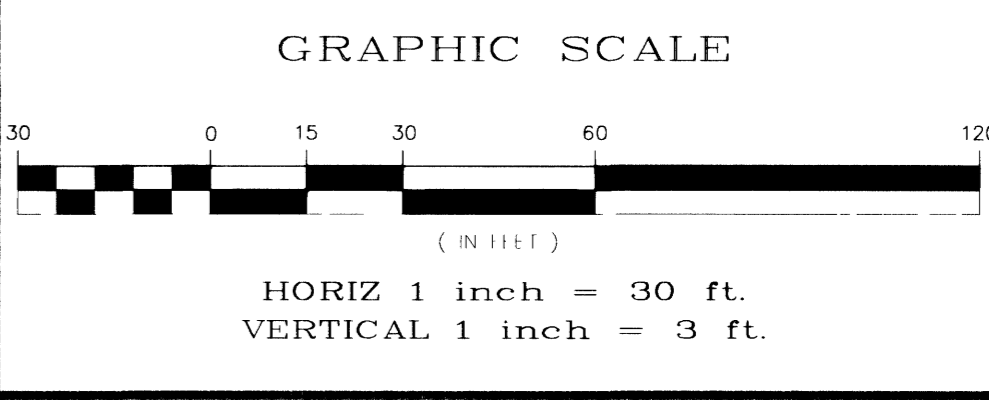
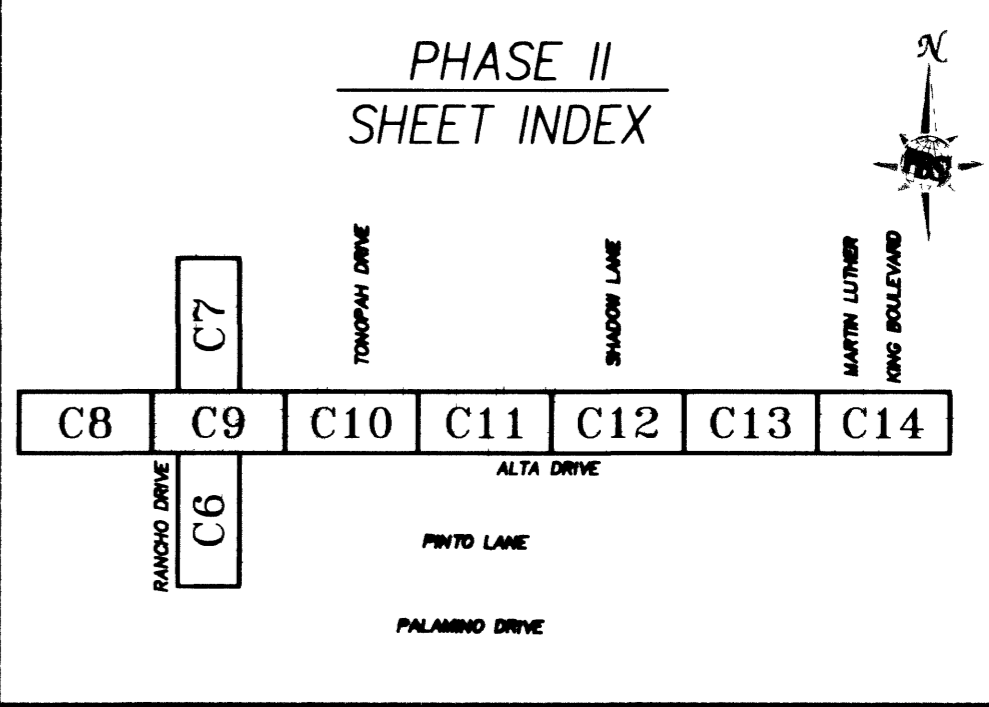
Call before you Overhead
1-702-593-6111
Nevada Public Improvement and Safety Services Department

RANCHO DRIVE
SEE DRAWING C7 STATION 25+00.00 FOR CONTINUATION



CURVE DATA

No.	RADIUS	DELTA	LENGTH	TANGENT	BACK OF CURB
C1	30.00'	87°32'52"	45.84'	28.74'	
C2	35.00'	87°16'41"	53.32'	33.38'	
C3	30.00'	89°57'07"	47.10'	29.97'	
C4	85.00'	92°39'32"	137.46'	89.04'	
C5	1.00'	180°00'00"	3.14'	---	
C6	3.50'	92°42'26"	5.66'	3.67'	
C7	2.50'	151°01'20"	6.59'	9.67'	
C8	101.50'	44°43'16"	79.22'	41.75'	
C9	1.50'	158°24'45"	4.15'	7.87'	

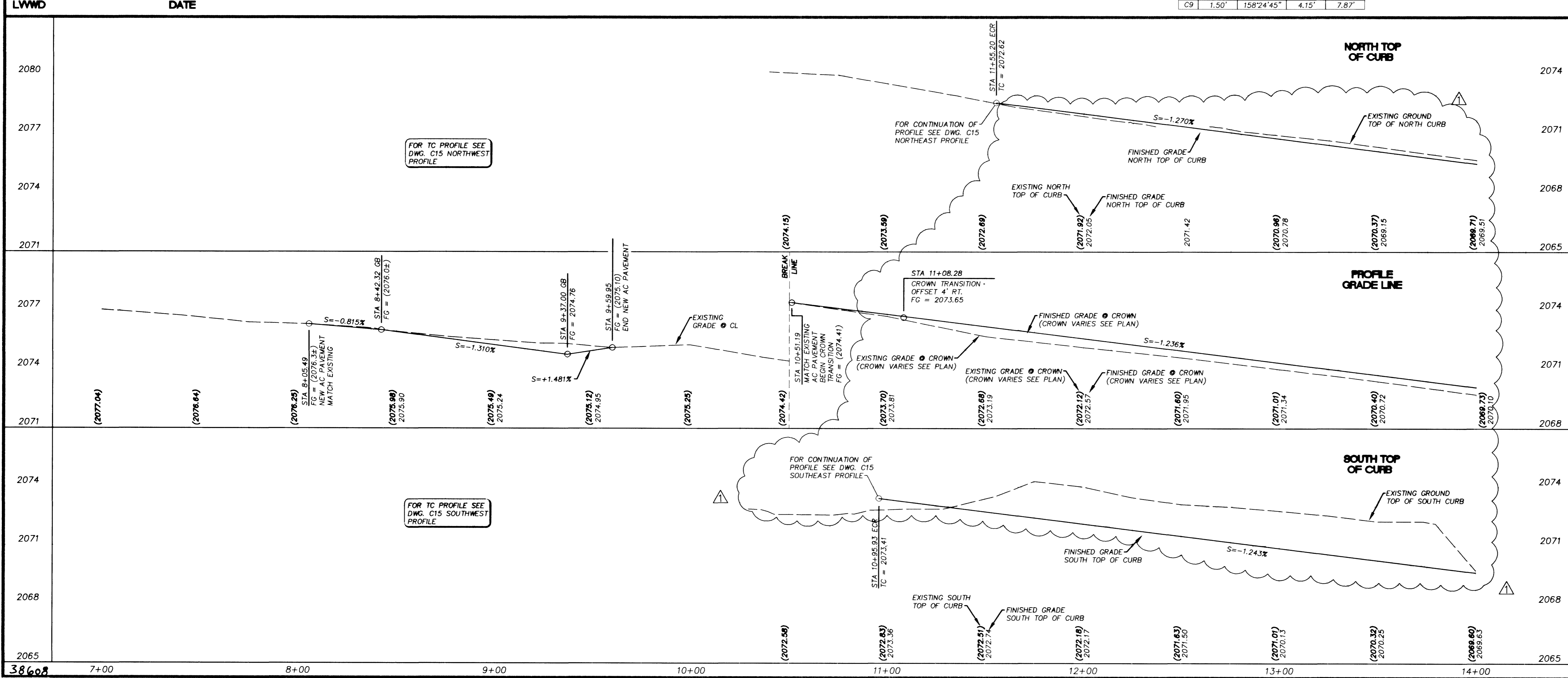
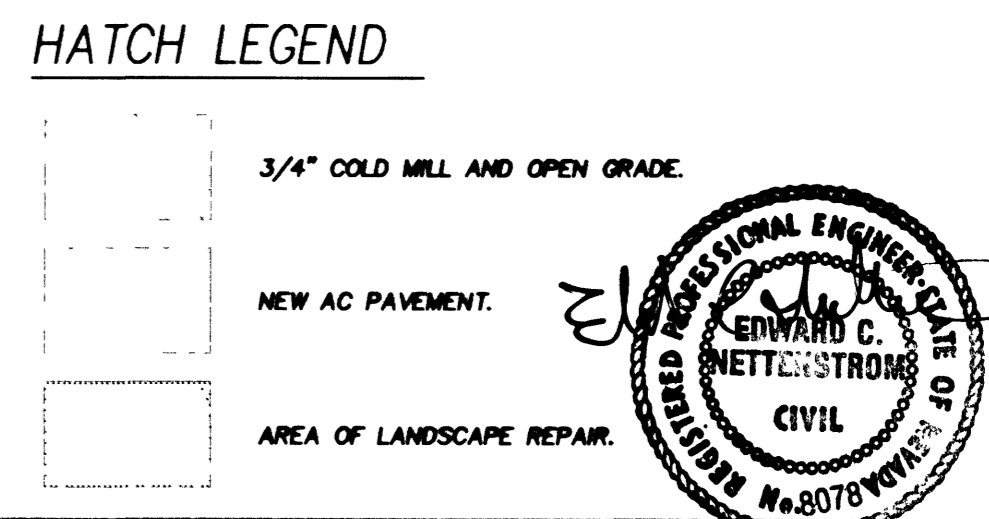


BASIS OF BEARING
N89°28'51", BEING CENTERLINE OF ALTA DRIVE PER BOOK 10, PAGE 57, REC. FEB. 2, 1965

BENCHMARK
CLV BENCHMARK BM 1LV01325E6, CLV DATUM (2071.68') BRASS DISK AT THE NORTHWEST CORNER OF RANCHO DRIVE AND PALMING DRIVE.

CAUTION:
EXISTING UTILITIES ARE LOCATED ON THE PLANS FROM A SEARCH OF AVAILABLE RECORDS. CONTRACTOR TO VERIFY LOCATIONS AND DEPTHS PRIOR TO CONSTRUCTION.

- KEY NOTES**
- CONSTRUCTION ITEMS:**
- CONSTRUCT STRUCTURAL SECTION PER TYPICAL SECTIONS, SEE DWGS. C3 & C4.
 - CONSTRUCT 'L' TYPE CURB & GUTTER PER STD. DWG. #216.
 - CONSTRUCT 5' SIDEWALK PER STD. DWG. #234.
 - CONSTRUCT 8' VALLEY GUTTER PER STD. DWG. #228.
 - CONSTRUCT RESIDENTIAL DRIVEWAY PER STD. DWG. #223.
 - CONSTRUCT CONCRETE DRIVEWAY TRANSITION. (MATCH EXISTING THICKNESS - 4" MIN. AND EXISTING WIDTH).
 - SAW CUT & MATCH EXISTING. (SEE "R" SHEETS FOR LIMITS OF REMOVAL).
 - CONSTRUCT SIDEWALK RAMP PER STD. DWG. #235, CASE 1. (A=B, B=B UNLESS OTHERWISE NOTED).
 - CONSTRUCT BLOCK WALL PER DETAIL "C" DWG. D1.
 - ADJUST EXISTING VALVE BOX TO FG PER UDACS PLATE #8.
 - CONSTRUCT MEDIAN ISLAND PER TYPICAL SECTIONS DWGS. C3 & C4.
 - ADJUST MANHOLE RING TO FG PER STD. DWG. #408.
 - ADJUST LVVMD METER BOX.
 - SET TYPE III MONUMENT PER STD. DWG. #241.
 - OFFSET CROWN LINE.
 - LIMITS OF LANDSCAPE & IRRIGATION REPAIR REFER TO GENERAL NOTE #7 DWG. C2.
 - CONSTRUCTION EASEMENT AS NOTED.
 - ASPHALT MEDIAN ISLAND PER TYPICAL SECTIONS DWGS. C3 & C4.
 - CONSTRUCT UNDER SIDEWALK DRAIN PER STD. DWG. #236. (MATCH EXISTING FLOWLINE).
 - CONSTRUCT RETAINING WALL AT BACK OF SIDEWALK PER DETAIL "B" DWG. D1.
 - REMOVE EXISTING WATER METER & ABANDON LATERAL TO MAIN.
 - COLD MILL EXISTING SURFACE 3/4".
 - RELOCATE EXISTING WATER METER & EXTEND LATERAL.
 - RELOCATE EXISTING FIRE HYDRANT PER UDACS STD. PLATE #7.
 - RELOCATE EXISTING MAILBOX.
 - CONSTRUCT ASPHALT DRIVEWAY TRANSITION PER DETAIL "D" DWG. D1.
 - CONSTRUCT TEMPORARY 4' SIDEWALK, 2" AC PAVEMENT.



REVISIONS

2 2/15/20 REVISIONS BY CLV
1 3/1/01 REVISIONS BY CLV

DATE: DECEMBER 06, 2000

DESIGNED BY: W. HORLACHER
CHECKED BY: W. HORLACHER
DATE: DECEMBER 06, 2000

ENGINEERING DESIGN SECTION
DESIGNED BY: W. HORLACHER
CHECKED BY: W. HORLACHER
DATE: DECEMBER 06, 2000

PROFESSIONAL ENGINEER - STATE OF NEVADA
WAYNE HORLACHER
CIVIL
No. 10739

Department of Public Works

ALTA/RANCHO IMPROVEMENTS PHASE II
ALTA DRIVE PLAN AND PROFILE
STA. 7+00.00 TO STA. 14+00.00

CITY OF LAS VEGAS
NEVADA

DRAWING No. C9-R
PLAN# 107-V3126

38608 7+00 8+00 9+00 10+00 11+00 12+00 13+00 14+00

REVISIONS ONLY
2-15-02