

TRAFFIC SIGNAL NOTES

- ALL WORK PERFORMED ON ANY TRAFFIC SIGNAL COMPONENT MUST BE UNDER THE DIRECT ON-SITE SUPERVISION OF A LEVEL II IMSA CERTIFIED TECHNICIAN.
- THE CONTRACTOR SHALL BE RESPONSIBLE FOR DAMAGE TO ALL EXISTING UTILITIES. THE LOCATIONS OF UNDERGROUND UTILITIES AS SHOWN ON THE PLANS ARE APPROXIMATE ONLY. THE CONTRACTOR SHALL NOTIFY ALL UTILITY COMPANIES TO VERIFY IN THE FIELD THE LOCATIONS OF THEIR INSTALLATIONS 72 HOURS PRIOR TO CONSTRUCTION. CALL-BEFORE-YOU-OVERHEAD 1-702-593-6111 CALL-BEFORE-YOU-DIG 1-800-227-2600
- ALL TRAFFIC SIGNAL INSTALLATIONS SHALL CONFORM TO THE UNIFORM STANDARD DRAWINGS AND UNIFORM STANDARD SPECIFICATIONS FOR PUBLIC WORKS' CONSTRUCTION OFF-SITE IMPROVEMENTS, CLARK COUNTY AREA, NEVADA, VOLUMES I AND II, ADOPTED BY THE REGIONAL TRANSPORTATION COMMISSION MAY 11, 2000 WITH ALL SUBSEQUENT REVISIONS AND SPECIAL PROVISIONS.
- ALL TRAFFIC SIGNAL UTILIZE EXISTING 1-60 AMP 1P C. B. (TRAFFIC SIGNAL) AND EXISTING 1-40 AMP 1P C. B. (INTERSECTION LIGHTING) IN EXISTING SERVICE PEDESTAL. CONDUCTORS TO CONTROLLER CABINET SHALL BE TWO #4 AWG THW (1 BLACK, 1 WHITE) FOR TRAFFIC SIGNAL, TWO #4 AWG THW (1 BLACK, 1 WHITE) FOR INTERSECTION LIGHTING AND ONE #8 AWG THW (GREEN).
- EXISTING INTERSECTION LUMINAIRES SHALL BE REWIRED THROUGH THE CONTROLLER CABINET. THE #4 AWG THW INTERSECTION LIGHTING CONDUCTORS FROM THE SERVICE PEDESTAL SHALL BE SPLICED INTO INDIVIDUAL PAIRS OF #10 AWG THW CONDUCTORS FOR EACH LUMINAIRE WITHIN THE CONTROLLER CABINET. EACH PAIR OF #10 CONDUCTOR SHALL BE INDIVIDUALLY FUSED IN THE CONTROLLER CABINET. THERE SHALL BE NO SPLICES BETWEEN THE CABINET AND THE LUMINAIRE FIXTURES.
- CONTRACTOR SHALL FURNISH FOUR (4) INTERNALLY ILLUMINATED STREET NAME SIGNS PER STD DWG NOS. 404.416 AND 404.417 CLV MODIFIED. SEE TABLE FOR STREET NAME SIGN LEGENDS AND BLOCK NUMBERS. THE CONTRACTOR SHALL VERIFY BLOCK NUMBERS WITH THE CITY OF LAS VEGAS PRIOR TO FABRICATION. THE INTERNALLY ILLUMINATED STREET NAME SIGNS SHALL BE WIRED TO THE LUMINAIRES PHOTO CELL FOR CONTROL WITH #10 AWG THW COPPER STANDARD WIRE (TYPICAL).
- CONDUIT ROUTING SHOWN IS SCHEMATIC FOR THE PURPOSE OF CLARITY AND MAY DIFFER FROM ACTUAL INSTALLATION.
- ALL PULLBOXES ARE NO. 5 UNLESS OTHERWISE NOTED. ALL PULLBOXES SHALL BE IN ACCORDANCE WITH UNIFORM STANDARD DRAWINGS NOS. 404.110, 404.120, AND 404.130.
- TRAFFIC SIGNAL CABLE SHALL BE 25 CONDUCTOR #14 AWG SOLID (TYPICAL) CABLE AND SHALL CONFORM TO IMSA SPEC. NO. 20-1. ALL SIGNAL DETECTION WILL BE BY VIDEO.
- ALL PEDESTRIAN PUSH BUTTON SIGNS SHALL BE 9" X 12" WITH FULL MOUNTING BRACKETS. ALL PUSH BUTTONS TO BE MOUNTED 36" ABOVE SIDEWALK. THE MAXIMUM HORIZONTAL REACH DISTANCE IS TO BE 24". PUSH BUTTONS SHALL BE AUDIBLE/TACTILE TYPE IN ACCORDANCE WITH CLV SPECIAL PROVISIONS TO SECTION 623 OF USS.
- THE ROUTING AND TERMINATION OF CONDUITS AND THE PLACING OF POLES AND CABINETS SHALL BE AS INDICATED ON THE PLANS. ALL CHANGES SHALL BE APPROVED BY THE ENGINEER.
- INSTALL TYPE VII CABINET, COMMONLY REFERRED TO AS A TYPE "R" CABINET. THE CABINET SHALL CONFORM TO THE UNIFORM STANDARD DRAWINGS SPECIFICATIONS AND SPECIAL PROVISIONS, CLARK COUNTY AREA, NEVADA. INSTALL CABINET AS SHOWN ON THE DRAWINGS. CONTRACTOR SHALL CONTACT CLV AT 229-6448 TO OBTAIN APPROVAL OF CONTROLLER PRIOR TO INSTALLATION.
- THE CONTRACTOR SHALL SUPPLY A 2070N CONTROLLER TO THE CITY OF LAS VEGAS TRAFFIC SIGNAL REPAIR SHOP, FOURTEEN DAYS PRIOR TO SIGNAL TURN-ON, FOR TESTING PURPOSES. THE CONTRACTOR SHALL DELIVER THE CONTROLLER TO, AND PICKUP THE CONTROLLER AT, 2801 E. CHARLESTON BOULEVARD. CONTRACTOR SHALL NOTIFY THE TRAFFIC SIGNAL REPAIR SHOP (229-6075) SEVEN DAYS PRIOR TO PICKUP. ALL 2070N CONTROLLERS MUST BE COMPATIBLE WITH AND FUNCTION PROPERLY WITH OS9 1996 OPERATION SYSTEM, THE LATEST REVISION OF THE "NEXT PHASE INTERSECTION MANAGEMENT SOFTWARE" (GARDNER TRANSPORTATION SYSTEM) AND THE ICONS (GARDNER TRANSPORTATION SYSTEM) GENERAL SOFTWARE.
- AUTO SCOPE 2004 OR ITRIS VANTAGE PLUS VIDEO DETECTION SYSTEM SHALL BE INSTALLED. EACH VIDEO CAMERA WILL HAVE POWER (3/16 COND. PVC JACKETED) AND 8281 COAXIAL CABLE DIRECTLY FROM THE CABINET. CAMERAS WILL BE MOUNTED IN ACCORDANCE WITH MANUFACTURER RECOMMENDATIONS AS APPROVED BY THE CLV. "BNC" CONNECTORS ARE THE ONLY ACCEPTABLE TERMINATION OF CABLES. THE VIDEO DETECTION SYSTEM SHALL BE CAPABLE OF SENSING VEHICLES IN ALL APPROACH LANES FROM 10 FEET BEYOND THE STOP LINE TO 300 FEET UPSTREAM OF THE STOP LINE.
- IF THE IMPROVEMENTS NECESSITATE THE OBLITERATION, TEMPORARY CONSTRUCTION, TEMPORARY REMOVAL, OR RELOCATION OF ANY EXISTING TRAFFIC PAVEMENT MARKING, SUCH PAVEMENT MARKING SHALL BE RESTORED OR REPLACED AT THE CONTRACTORS EXPENSE TO THE SATISFACTION OF THE CITY.
- THE CONTRACTOR SHALL INSTALL CROSSWALKS, STOP BARS AND SIGNS AS IDENTIFIED ON THE PLANS. (SEE SHEET 3)
- ANY PUBLIC TRAFFIC SIGNAL OR STREETLIGHT EQUIPMENT AND APPURTENANCES WHICH ARE REMOVED AND NOT RELOCATED SHALL BE DELIVERED TO THE CITY OF LAS VEGAS YARD, 3104 EAST BONANZA ROAD.
- MODEL 721 OPTICOM DETECTORS (TWO-WAY) SHALL BE MOUNTED ON TOP OF THE LEFT-MOST SIGNAL HEAD ON THE MAST ARM OF POLE "A" AND "B". CONTROLLER SHALL BE EQUIPPED FOR OPTICOM PRE-EMPTION USING A MODEL 754 PHASE SELECTOR. MODEL 138 OPTICOM DETECTOR CABLE SHALL BE RUN FROM THE CONTROLLER TO THE OPTICOM DETECTOR AS SHOWN IN THE CONDUIT AND WIRE SCHEDULE.
- TRAFFIC SIGNAL POLES SHALL BE FINISHED WITH AMERLOCK 400/AMERSHIELD SYSTEM NO. 5442D "HUMMINGBIRD BROWN" OR APPROVED EQUIVALENT.
- ANY SIDEWALK PANELS DAMAGED OR DISTURBED DURING CONSTRUCTION SHALL BE REPLACE OR REPAIRED AT THE CONTRACTORS EXPENSE IN ACCORDANCE WITH UNIFORM STANDARD DRAWINGS AND SPECIFICATIONS AND TO THE SATISFACTION OF THE CITY.
- THE RELOCATION/REPLACEMENT OF THE EXISTING LANDSCAPING AND IRRIGATION SYSTEMS SHALL BE PAID FOR BY SUMMERLIN. THE CONTRACTOR SHALL COORDINATE WORK WITH A SUMMERLIN REPRESENTATIVE.
- FOURTEEN (14) WORKING DAYS PRIOR TO TURN-ON OR COMPLETION OF MODIFICATION(S) TO A TRAFFIC SIGNAL SYSTEM, WRITTEN NOTICE SHALL BE SUBMITTED TO THE CITY OF LAS VEGAS TRAFFIC ENGINEER STATING THAT WORK IS BEING COMPLETED AND THE PROPOSED DATE OF COMPLETION.
- MAST ARM SIGNS SHALL BE ADJACENT (NO GAP) TO SIGNAL HEAD.
- ALL INDICATIONS SHALL BE LIGHT EMITTING DIODE (LED) AND SHALL MEET CLV SPECIAL PROVISIONS TO SECTION 623 OF UNIFORM STANDARD SPECIFICATIONS.
- THE CONTRACTOR SHALL EXTEND INTERCONNECT CABLE TO THE CONTROLLER CABINET VIA 2-INCH CONDUIT AS SHOWN ON THE PLANS UTILIZING EXISTING SLACK COILED IN PULLBOXES. NO SPLICES ARE ALLOWED BETWEEN CONTROLLER CABINETS.

POLE SCHEDULE

POLE	LOCATION STATION (OFF-SET)	TYPE	POLE		SIGNALS (VEH.)		SIGNALS (PED.)		PEDESTRIAN PUSH BUTTON		REMARKS		
			QUAD	ARM LENGTH	QUAD	ARM LENGTH	TYPE	QUAD	TYPE	QUAD		SIGN	
A	EXISTING	XXA (E)	4	55'	4	15' (E)	M-2(3) B-3T	MAST ARM 2	W-3T	2	2(46) 3(48)	LT LT	MOUNT OPTICAL DETECTOR (2-WAY) ON MAST ARM. SEE NOTE 18. MOUNT CAMERA FOR #1 AND #6. SEE NOTE 14.
B	EXISTING	XXA (E)	1	60'	1	15' (E)	M-2(3) B-1T	MAST ARM 3	W-0T	3	1(44) 2(46)	RT RT	MOUNT OPTICAL DETECTOR (2-WAY) ON MAST ARM. SEE NOTE 18. MOUNT CAMERA FOR #4 AND #7. SEE NOTE 14.
C	CHARLESTON 865+63.7 77' RT ±	1-A	-	-	-	-	A-BT	TOP OF POLE	W-0T	3	1(44) 2(46)	RT RT	
D	EXISTING	XXA (E)	2	55'	2	15' (E)	M-2(3) B-3T	MAST ARM 4	W-3T	4	1(44) 4(42)	LT LT	MOUNT CAMERA FOR #2 AND #5. SEE NOTE 14.
E	EXISTING	XXA (E)	3	60'	3	15' (E)	M-2(3) B-1T	MAST ARM 1	W-0T	1	3(48) 4(42)	RT RT	MOUNT CAMERA FOR #3 AND #8. SEE NOTE 14.
F	CHARLESTON 864+32.6 80' LT ±	1-A	-	-	-	-	A-BT	TOP OF POLE	W-0T	1	3(48) 4(42)	RT RT	

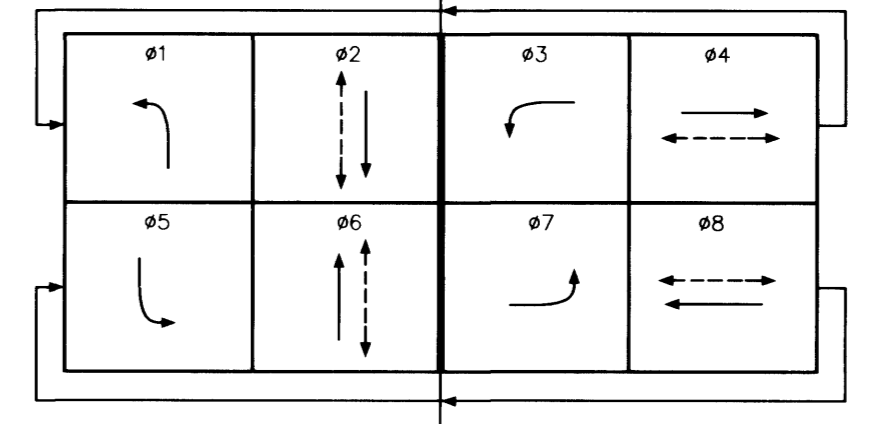
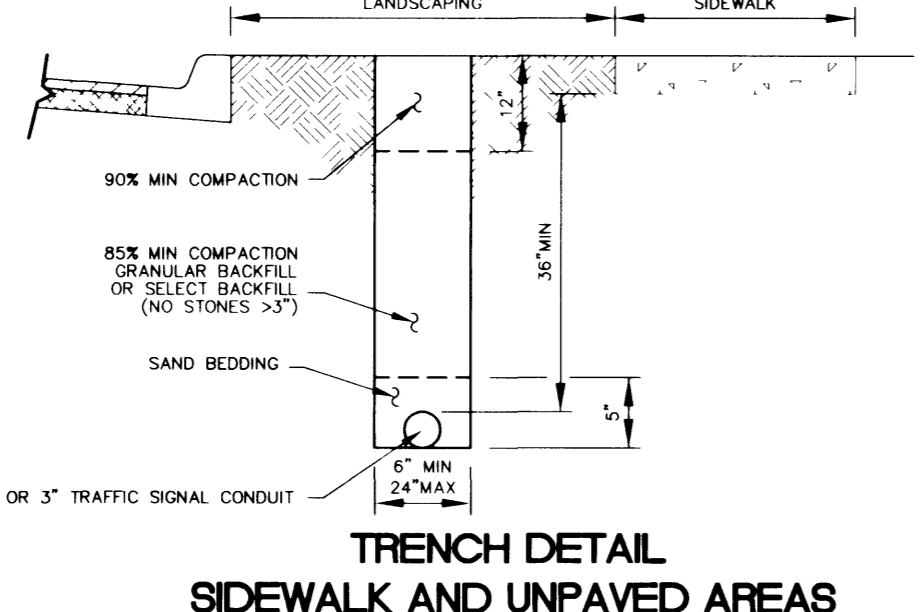
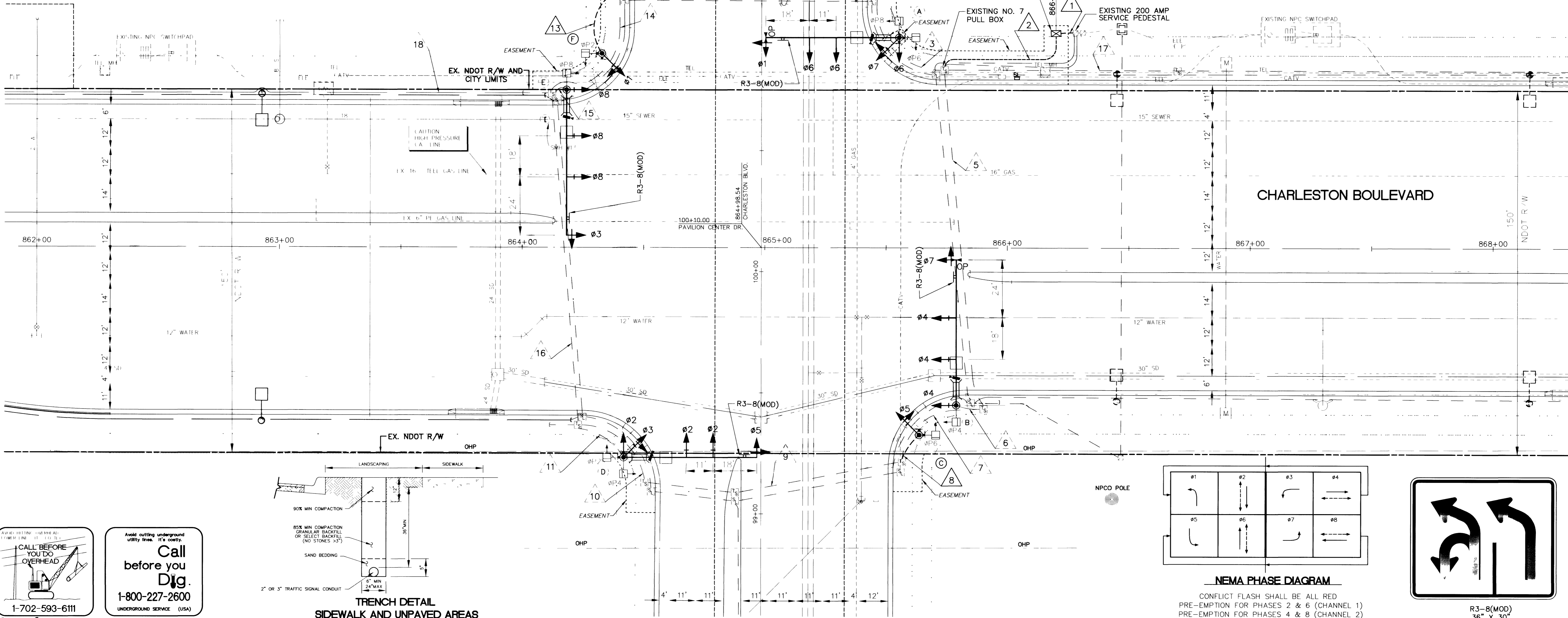
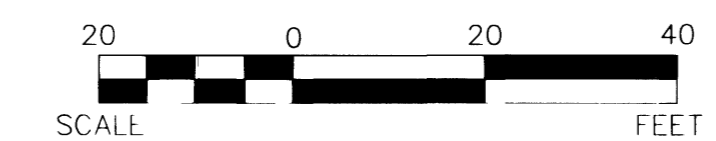
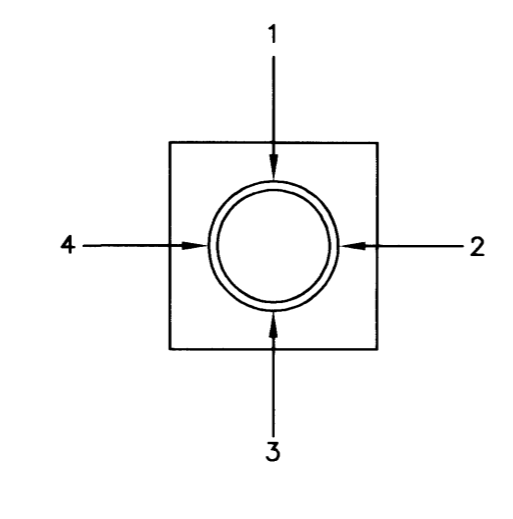
STREET NAME SIGNS

POLE	SIGN
(A) 5C	W 8D CHARLESTON BLVD 10700 5C
(B)	S PAVILION CENTER DR 1100
(D)	W CHARLESTON BLVD 10800
(E)	S PAVILION CENTER DR 1000

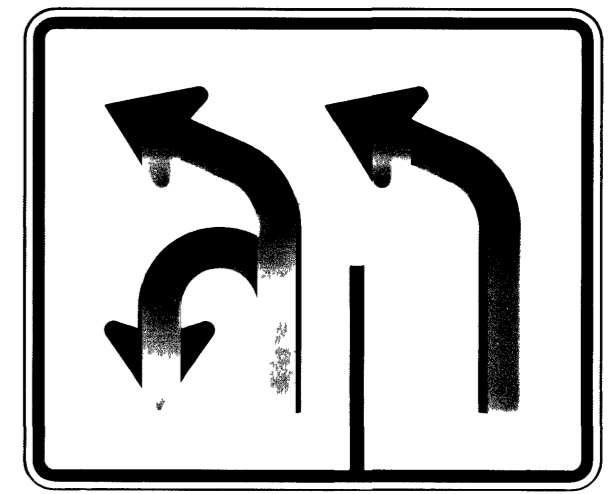
CONDUIT AND WIRE SCHEDULE

WIRE & CABLE	FROM	TO	VIA CONDUIT																	
			1	2	3	4	5	6	7	8	9	10	11	12	13	14	15	16	17	18
2-#4 (1 BLACK, 1 WHITE)	SERVICE PED.	CONTROLLER																		
2-#4 (1 BLACK, 1 WHITE)	SERVICE PED.	CONTROLLER	X																	
1-#8 GRD THW	SERVICE PED.	CONTROLLER																		
3-#16 AWG S/J COAXIAL	CONTROLLER	POLE A		X	X	X														
25 C. #14, 2 #10 THW	CONTROLLER	POLE B					X	X												
3-#16 AWG S/J COAXIAL	CONTROLLER	POLE C							X	X										
25 C. #14, 2 #10 THW	CONTROLLER	POLE D								X	X									
25 C. #14, 2 #10 THW	CONTROLLER	POLE E									X	X								
3-#16 AWG S/J COAXIAL	CONTROLLER	POLE F										X	X							
25 C. #14, 2 #10 THW	CONTROLLER	POLE A											X	X						
25 C. #14, 2 #10 THW	CONTROLLER	POLE B												X	X					
25 C. #14, 2 #10 THW	CONTROLLER	POLE C													X	X				
25 C. #14, 2 #10 THW	CONTROLLER	POLE D														X	X			
25 C. #14, 2 #10 THW	CONTROLLER	POLE E															X	X		
25 C. #14, 2 #10 THW	CONTROLLER	POLE F																X	X	
OPTICAL DETECTOR	CONTROLLER	POLE A																		
OPTICAL DETECTOR	CONTROLLER	POLE B																		
INTERCONNECT (SEE NOTE 25)	CONTROLLER	TOWN CENTER/CHARLESTON																	X	
INTERCONNECT (SEE NOTE 25)	CONTROLLER	CONTROLLER @ PAVILION/PARK RUN																	X	
CONDUIT SIZE			2"	4-3"	4-3"	3"	2-3"	3"	3"	3"	3"	3"	3"	3"	3"	3"	2-3"	2"	2"	
			(E)	(E)	(E)	(E)	(E)	(E)	(E)	(E)	(E)	(E)	(E)	(E)	(E)	(E)	(E)	(E)	(E)	

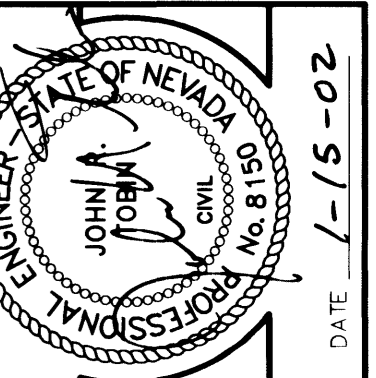
NOTE: (E) INDICATES EXISTING CONDUIT
A NO. 8 GREEN GROUNDING WIRE SHALL BE RUN FROM THE CONTROLLER CABINET TO EACH SIGNAL POLE BASE.



NEMA PHASE DIAGRAM
CONFLICT FLASH SHALL BE ALL RED
PRE-EMPTION FOR PHASES 2 & 6 (CHANNEL 1)
PRE-EMPTION FOR PHASES 4 & 8 (CHANNEL 2)



R3-8(MOD)
36" X 30"
208-512



DESIGN: TAM	DATE: 1/15/02
DRAWN: PB	DATE: 1/15/02
CHECK: ART	DATE: 1/15/02
ISSUE DATE: ---	DATE: 1/15/02
ISSUE EDITOR: ---	DATE: 1/15/02
PLOT DATE: 01-15-02	DATE: 1/15/02
PLOT TIME: 15:47:31	DATE: 1/15/02

G.C. WALLACE, INC.
Engineering/Architecture
1555 SOUTH RAINBOW BLVD., LAS VEGAS, NEVADA 89146
TELEPHONE: (702) 804-2000 • FAX: (702) 804-2299
E: V2051-2555@wallaceinc.com

SUMMERLIN
CITY OF LAS VEGAS
CHARLESTON BLVD/PAVILION CENTER DRIVE
TRAFFIC SIGNAL PLAN