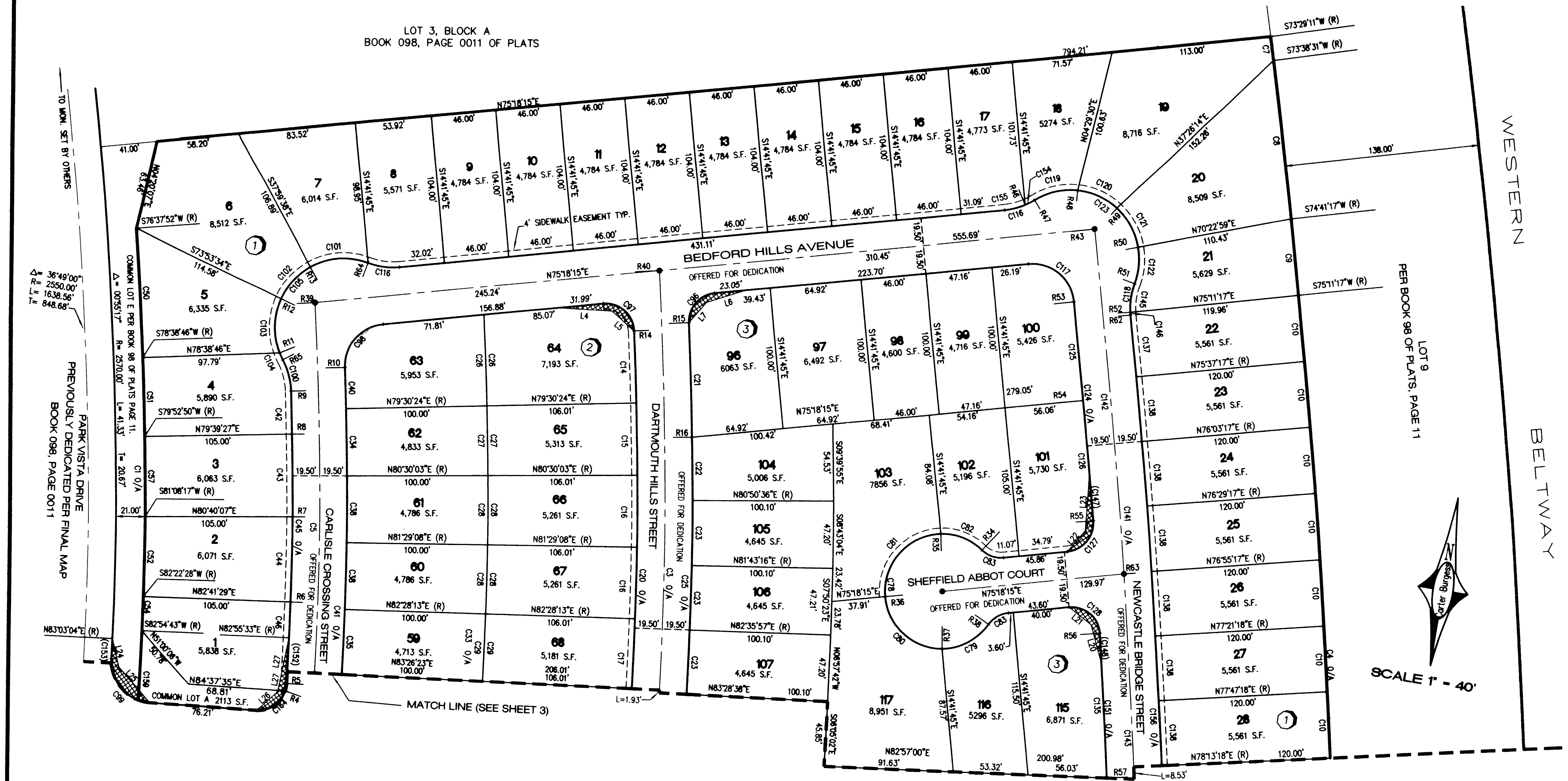


# ASHTON PARK AT THE VISTAS

(A COMMON INTEREST COMMUNITY)

BEING LOT 4, BLOCK A AS SHOWN ON THE FINAL MAP OF "THE VISTAS AT SUMMERLIN VILLAGE 20 UNIT NO. 2" ON FILE IN THE OFFICE OF THE COUNTY RECORDER, CLARK COUNTY, NEVADA, IN BOOK 098, OF PLATS, PAGE 0011, LYING WITHIN THE SOUTHEAST QUARTER (SE 1/4) OF SECTION 26, AND THE NORTHEAST QUARTER (NE 1/4) OF SECTION 35, TOWNSHIP 20 SOUTH, RANGE 59 EAST, M.D.M., CITY OF LAS VEGAS, CLARK COUNTY, NEVADA.



LEGEND	
<b>286</b>	LOT NUMBER / RESIDENTIAL = 117 COMMON LOTS = 4
	SUBDIVISION BOUNDARY LINE
	STREET CENTERLINE
	RIGHT OF WAY
	LOT LINE
	4' SIDEWALK EASEMENT LINE GRANTED PER THIS MAP
	BELTWAY RIGHT OF WAY
<b>1</b>	BLOCK NUMBER
	C1 CURVE LABEL
	(R) RADIAL LINE LABEL
	L1 LINE LABEL
	● FOUND MONUMENT AS DESCRIBED
	■ SET NAIL & BRASS TAG "PLS 10355"
	● SET TYPE III MONUMENT "PLS 10355" W/ REF. MONUMENTS
	S.F. SQUARE FEET
	O/A OVERALL
	○ SIGHT VISIBILITY ZONE

- NOTES**
- ALL REAR LOT CORNERS SHALL BE SET WITH A NAIL AND TAG P.L.S. 10355 ON BLOCK WALLS. ALL FRONT OR SIDE CORNERS ADJOINING PUBLIC RIGHT-OF-WAY SHALL BE MARKED BY THE SAWCUTTING OF THE BACK OF CURB ON THE PROLONGATION OF THE PROPERTY LINES.
  - SIGHT VISIBILITY ZONE - NO LANDSCAPING OR SIGHT RESTRICTING IMPROVEMENTS (SUCH AS WALLS/FENCES) TALLER THAN 30 INCHES ALLOWED WITHIN THE AREAS SHADDED. (FOR THE DEFINITION OF SHADDED AREAS SEE LEGEND)
  - ALL LOTS HAVE A RIGHT OF INGRESS AND EGRESS ACROSS COMMON ELEMENTS.
  - DIRECT VEHICULAR ACCESS TO PARK VISTA DRIVE FROM LOTS 1 THROUGH 6 AND, 53 THROUGH 58 IS PROHIBITED

**Carter Burgess** Consultants in Planning, Engineering, Construction Management, and Related Services

6655 Bermuda Road  
Las Vegas, Nevada 89119  
(702) 938-5400 Fax (702) 938-5454

SCALE: 1" = 40'	JOB# 240191	DATE: 03-09-2001	SHEET	OF
FILE: FM-1B	DRN. BY: E.O.	REV.:	2	4
	CKD. BY: M.T.S.	7/6/05		

Book 100 Page 0012