

**BASIS OF BEARING**

NORTH 89° 54' 30" EAST BEING THE SOUTH LINE OF THE SOUTHEAST QUARTER OF SECTION 35, T 20 S, R 59 E, M.D.M. AS SHOWN BY MAP ON FILE IN FILE #7, PAGE 73 PP SURVEYS, IN THE CLARK COUNTY RECORDER OFFICE.

**BENCHMARK**

RIVET & PLATE IN TOP OF CURB, NE CORNER OF CHARLES BLVD. AND HUALAPAI WAY (NO. 01008-385ES)

\*2912.23 NAVD 1988 DATUM  
2910.05 SUMMERLIN DATUM

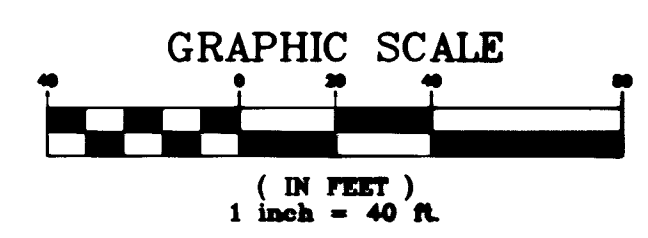
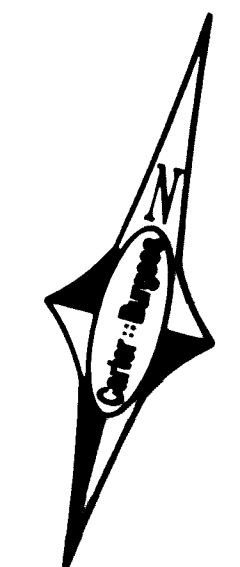
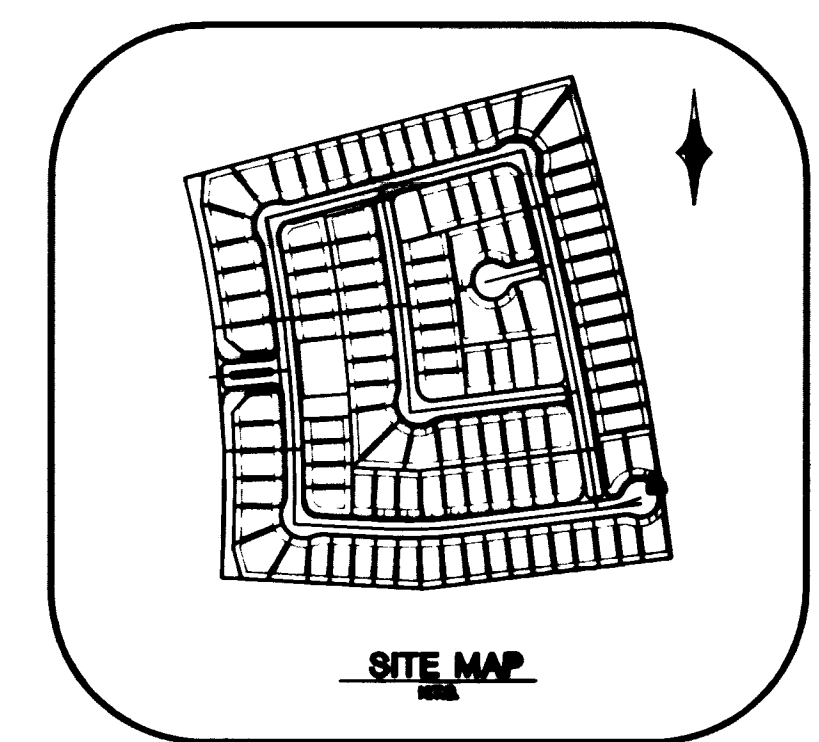
\* THIS PROJECT BASED ON 1988 DATUM

**CONSTRUCTION NOTES**

1. CONSTRUCT SIDEWALK RAMP PER USD STD. DWG. 2235 CASE II.
2. CONSTRUCT 4" SIDEWALK PER SIS STD DWG 5-72.
3. CONSTRUCT 30" "ROLL" TYPE CURB PER SIS STD. DWG. 5-48.
4. CONSTRUCT 8" VALLEY GUTTER PER SIS STD. DWG. 5-64.
5. CONSTRUCT "A" TYPE CURB PER SIS STD. DWG. 5-50.
6. CONSTRUCT 24" "L" TYPE CURB PER SIS STD. DWG. 5-47.
7. TRANSITION FROM ROLL TO L CURB SEE DETAIL 1/20 ON SHT 20.
8. CONSTRUCT ENCASUREMENT PER DETAIL ON SHT 20. UDACS SECTION 2.18.02

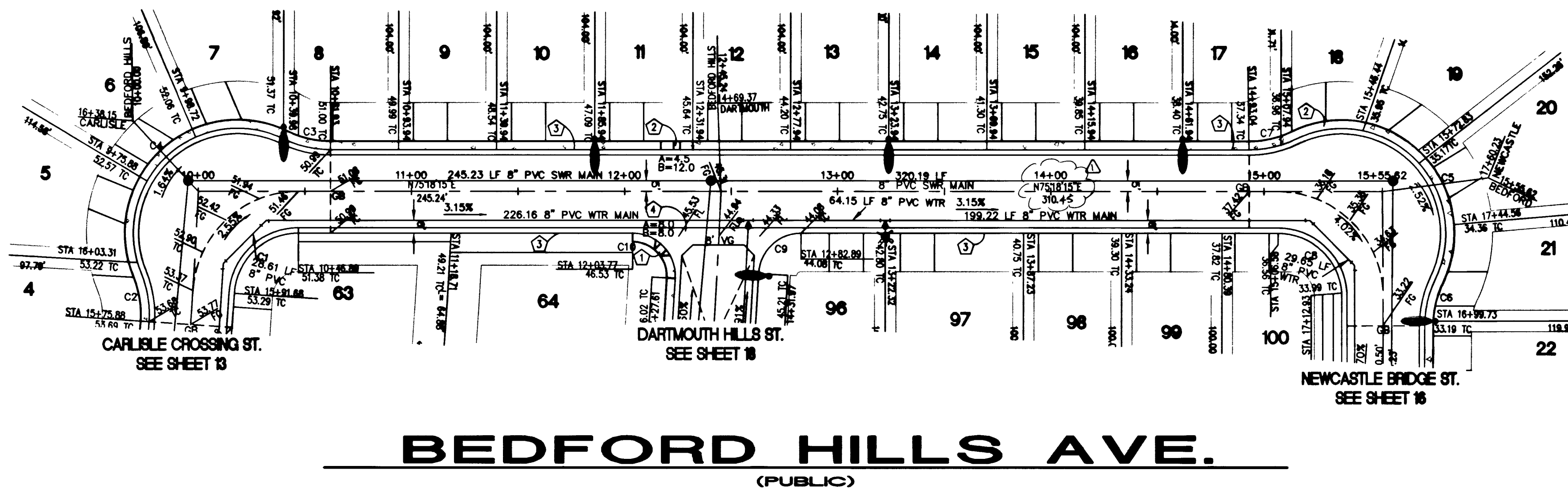
**BACK OF CURB CURVE TABLE**

CURVE	RADIUS	LENGTH	TANGENT	DELTA
C1	30.00	45.25	28.18	86°24'40"
C2	50.00	23.08	11.79	26°28'32"
C3	50.00	22.67	11.53	25°58'28"
C4	49.00	118.44	129.32	138°23'48"
C5	49.00	121.14	140.90	141°38'51"
C6	50.00	22.49	11.44	25°46'14"
C7	50.00	22.67	11.53	25°58'28"
C8	30.00	47.01	29.66	84°42'41"
C9	20.00	30.53	18.84	86°53'07"
C10	20.00	32.53	21.15	93°11'56"



**LEGAL DESCRIPTION**

ALL OF PARCEL "P" OF SUMMERLIN VILLAGE 20 UNIT 2

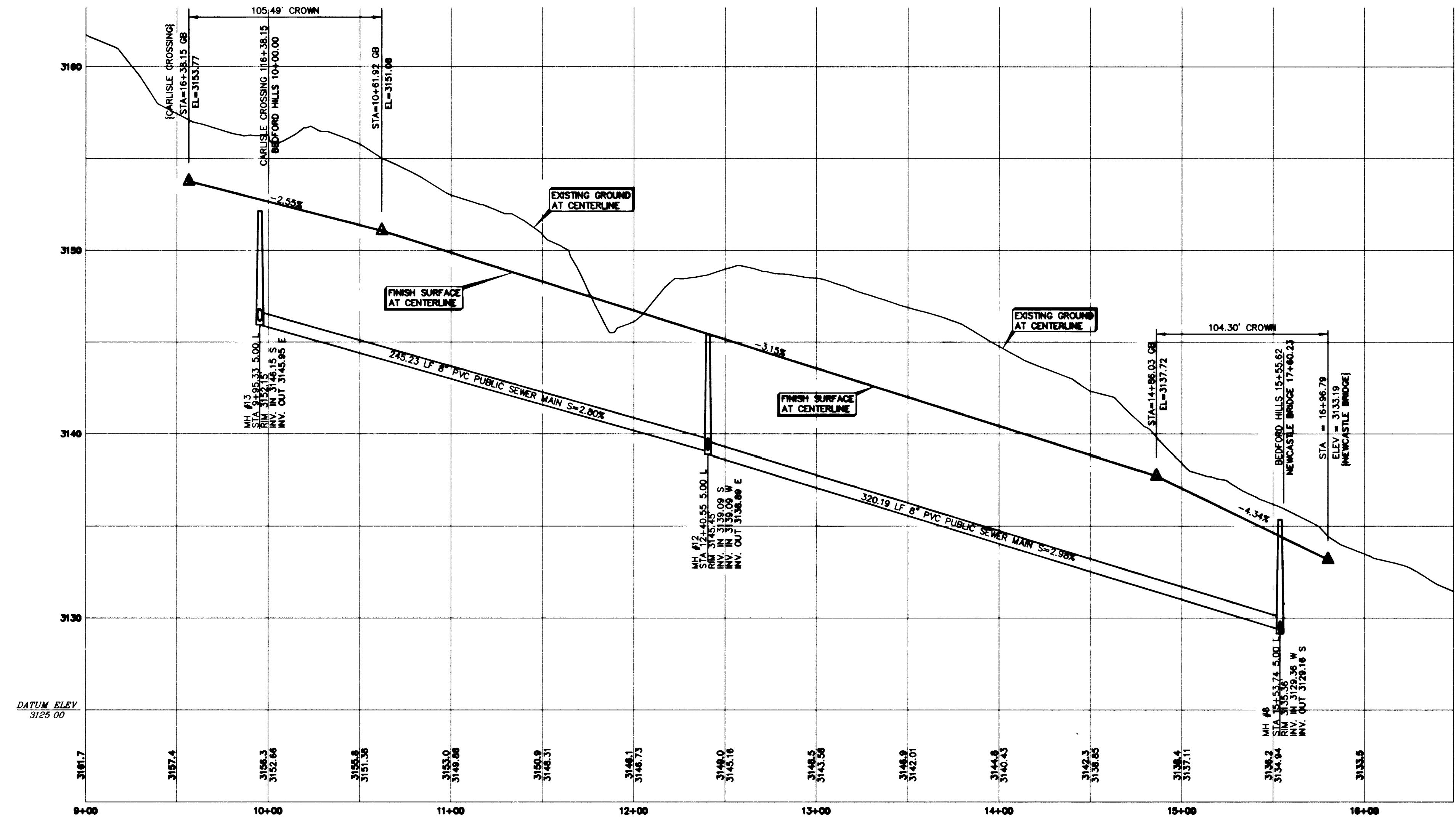


APPROVAL

*[Signature]* 4/09/10  
LAS VEGAS VALLEY WATER DISTRICT DATE

Avoid cutting underground utility lines. It's costly.  
**Call before you Dig**  
1-800-227-2600

Avoid overhead power line contact. It's costly.  
**Call before you Overhead**  
1-702-593-6111  
NEVADA POWER ENVIRONMENT AND SAFETY SERVICES DEPARTMENT



CORRECTED DIMENSIONS PER PLAN 5795

NO.	DATE	BY	REVISION

**GREYSTONE HOMES**

**Carter Burgess**  
0655 Bermuda road  
Las Vegas, NV 89119  
(702) 898-5600 Fax (702) 898-5464  
Consultants in Planning, Engineering, Construction Management, and Related Services

**PLAN AND PROFILE**  
BEDFORD HILLS AVE.

**ASHTON PARK**  
THE VISTAS - PARCEL P

DRAWN BY: \_\_\_\_\_  
DESIGNED BY: \_\_\_\_\_  
CHECKED BY: \_\_\_\_\_

PROJECT NO: 240191  
SCALE: 1"=40' HORIZ. 1"=4' VERT.

SHEET 15 OF 20 SHEETS  
DRAWING NO. 3074-4668

31348 31845  
RS