

SAINT IVES CT.
BACK OF CURB CURVE TABLE

CURVE	RADIUS	LENGTH	TANGENT	DELTA
C1	6.00	18.85	0	180°00'00"
C2	6.00	18.85	0	180°00'00"
C3	20.00	31.77	20.35	91°00'23"
C4	20.00	31.77	20.35	91°00'23"
C5	30.00	46.47	29.35	88°44'38"
C6	30.00	46.47	29.35	88°44'38"

LENGTH BEARING
L1 76.21 N 84°31'35" E
L2 76.21 N 84°31'35" E

BASIS OF BEARING
NORTH 89° 54' 38" EAST BEING THE SOUTH LINE OF THE SOUTHEAST QUARTER OF SECTION 35, T 20 S, R 59 E, M.D.M. AS SHOWN BY MAP ON FILE IN FILE 87, PAGE 73 PF SURVEYS, IN THE CLARK COUNTY RECORDER OFFICE.

BENCHMARK
RIVET & PLATE IN TOP OF CURB, NE
RETURN OF CHARLES BLVD. AND HUALUPAI WAY (NO. 01V09-38SECS)

*2912.23 NAVD 1988 DATUM
2910.05 SUMMERLIN DATUM

* THIS PROJECT BASED ON 1988 DATUM

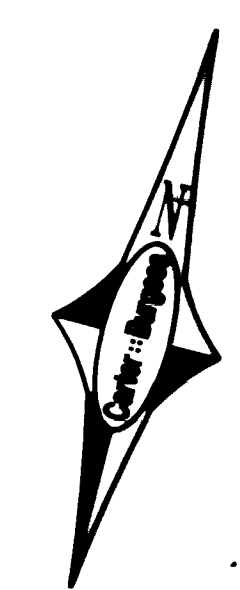
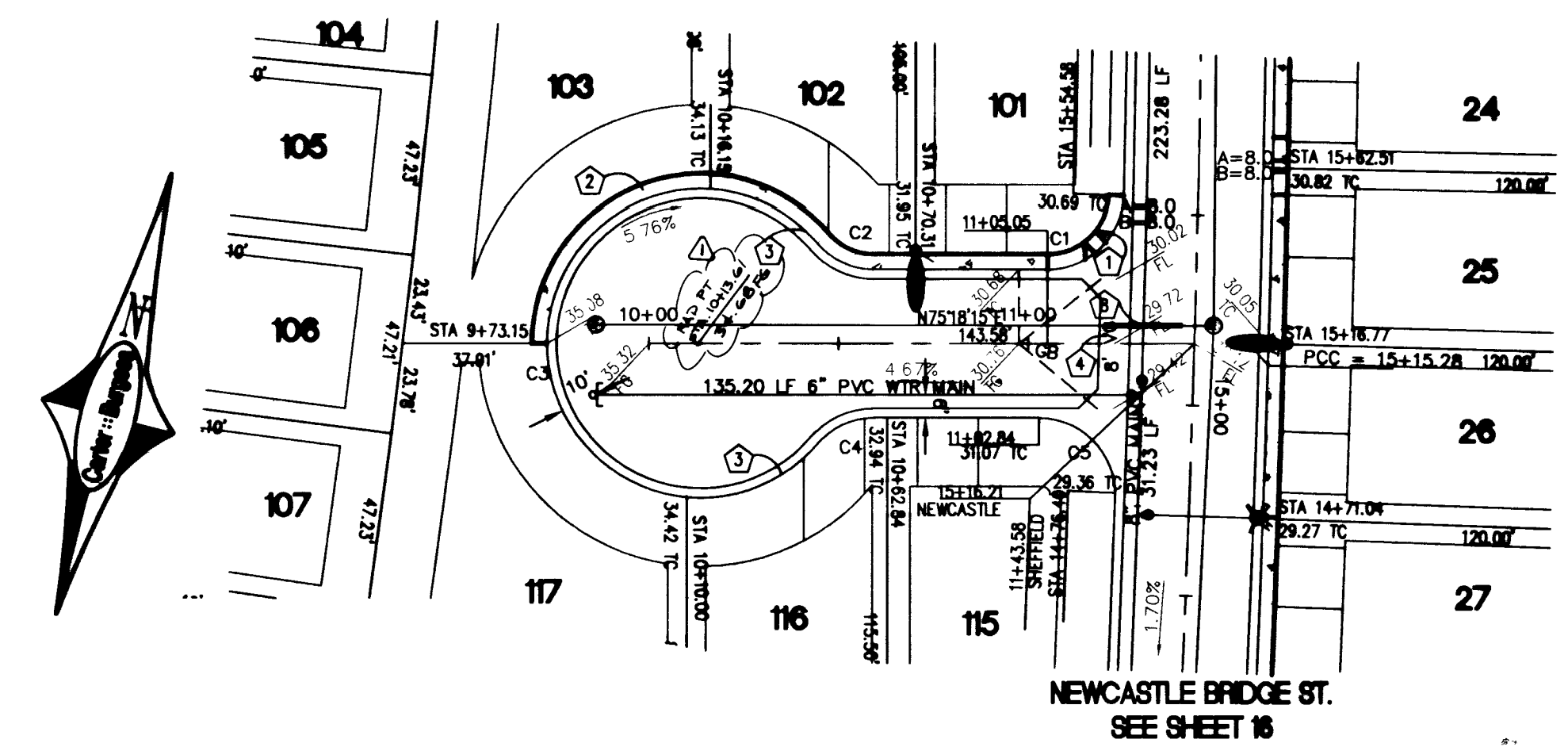
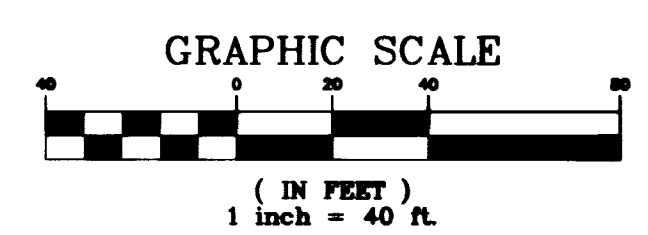
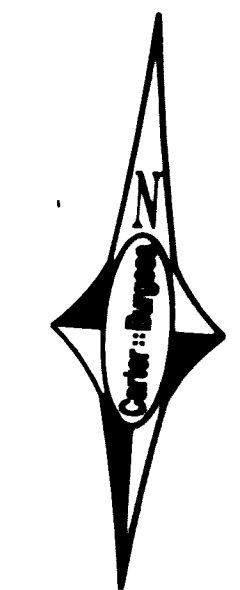
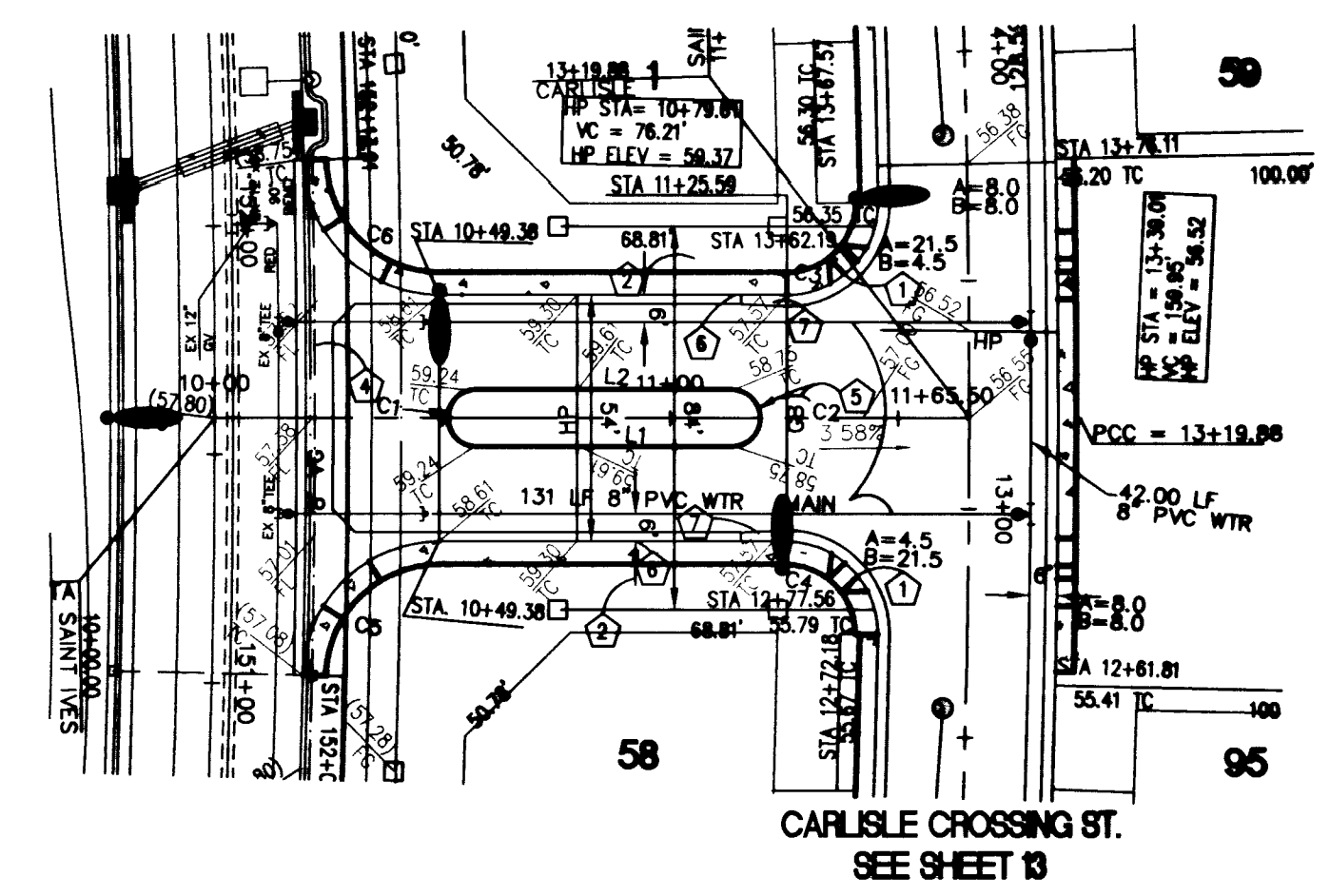
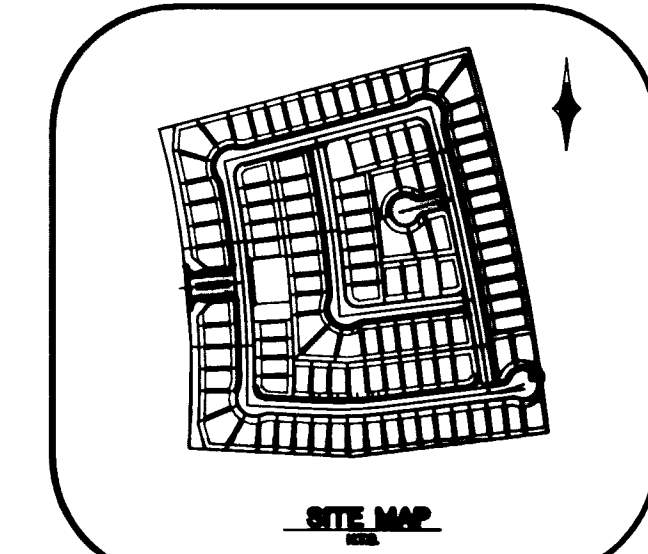
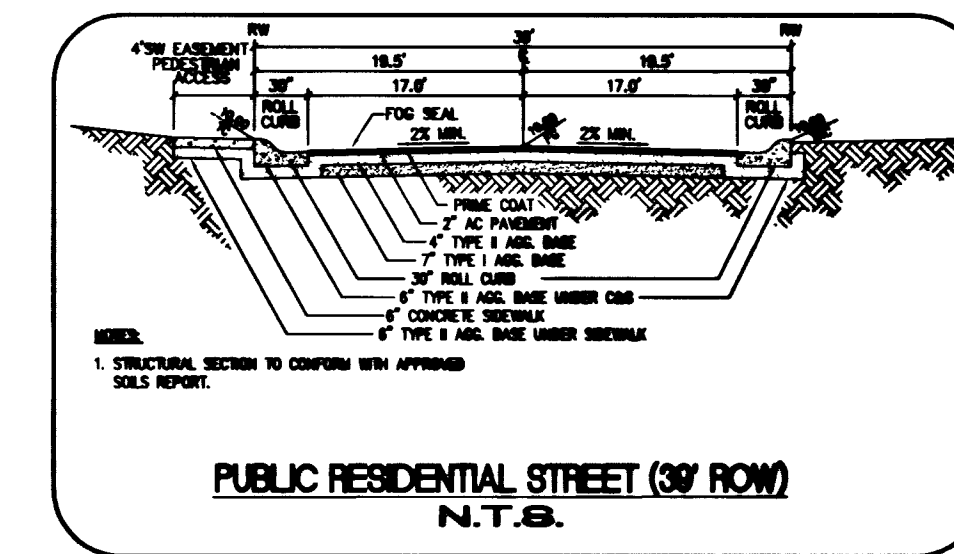
LEGAL DESCRIPTION
ALL OF PARCEL "P" OF SUMMERLIN VILLAGE 20 UNIT 2

CONSTRUCTION NOTES

- CONSTRUCT SIDEWALK RAMP PER USD STD. DWG. #235 CASE III.
- CONSTRUCT 4" SIDEWALK PER SIS STD DWG 5-72.
- CONSTRUCT 30" "ROLL" TYPE CURB PER SIS STD. DWG. 5-48.
- CONSTRUCT 8" VALLEY GUTTER PER SIS STD. DWG. 5-64.
- CONSTRUCT "A" TYPE CURB PER SIS STD. DWG. 5-50.
- CONSTRUCT 24" "L" TYPE CURB PER SIS STD. DWG 5-47.
- TRANSITION FROM ROLL TO L CURB SEE DETAIL 1/20 ON SHIT 20.
- CONSTRUCT ENCASUREMENT PER DETAIL ON SHIT 20. UDACS SECTION 218.02

SHEFFIELD ABBOT AVE.
BACK OF CURB CURVE TABLE

CURVE	RADIUS	LENGTH	TANGENT	DELTA
C1	20.00	30.96	19.57	88°44'38"
C2	19.50	16.83	8.98	49°27'30"
C3	40.50	197.15	34.84	278°55'00"
C4	19.50	16.83	8.98	49°27'30"
C5	20.00	31.72	20.11	92°02'31"

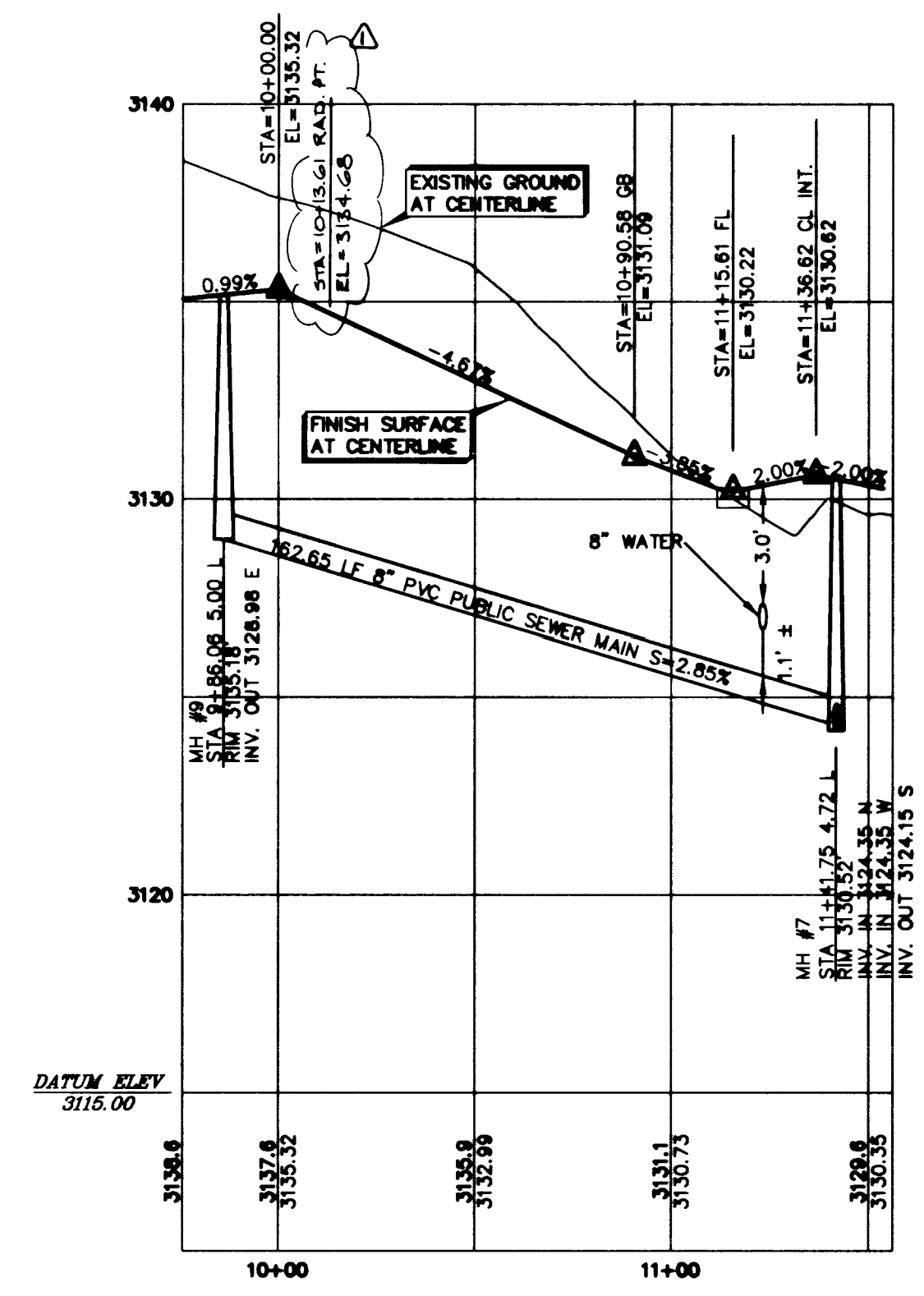
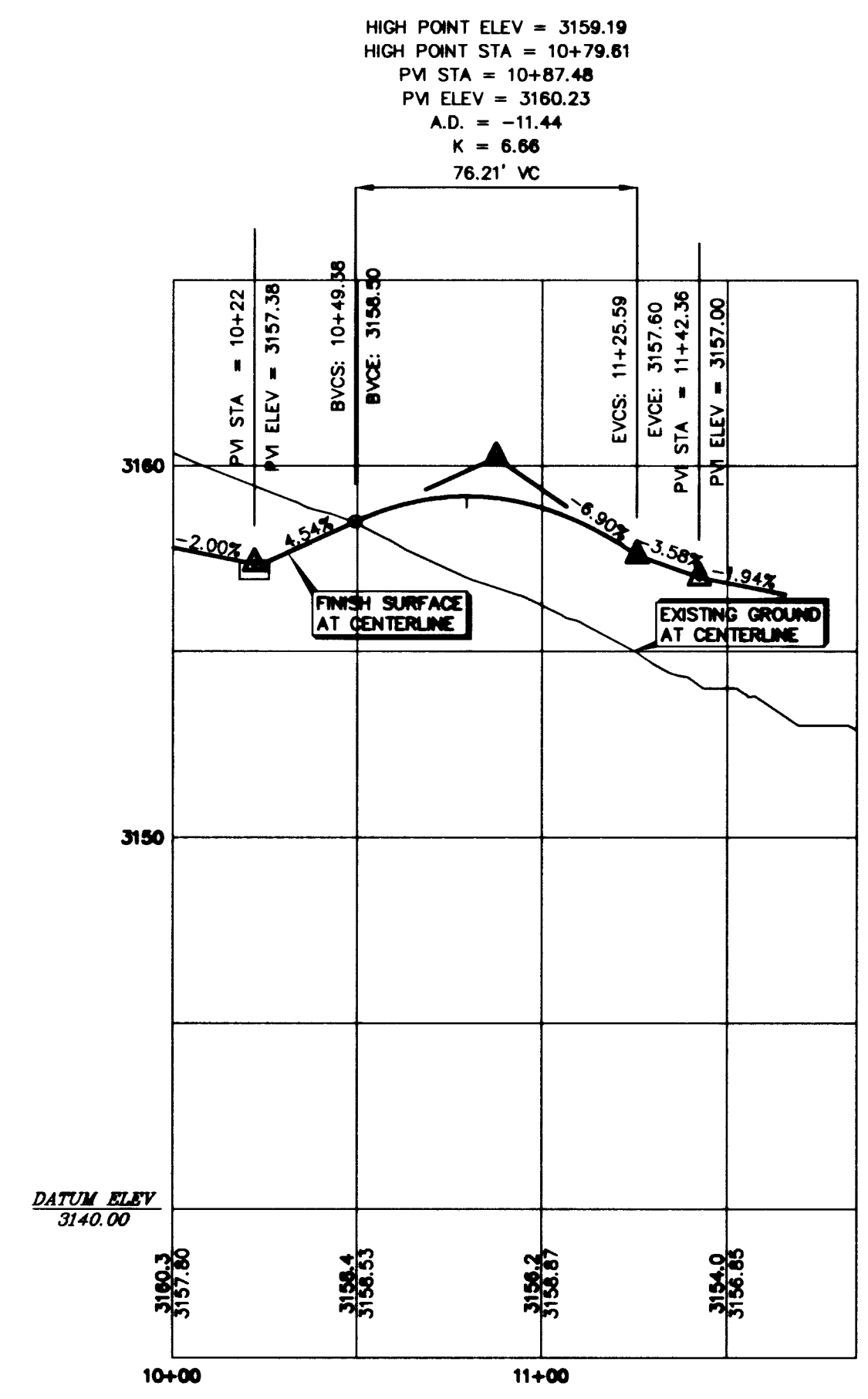


Call before you Dig
1-800-227-2600

Call before you Overhead
1-702-593-6111

SAINT IVES CT.
(PUBLIC)

SHEFFIELD ABBOT AVE.
(PUBLIC)

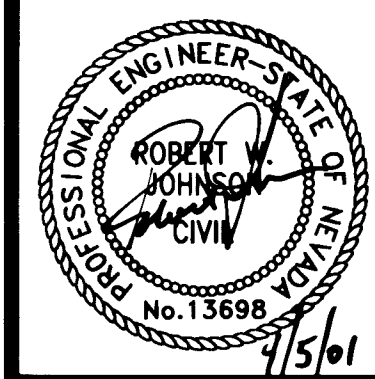


APPROVAL
[Signature] 4/10/14
LAS VEGAS VALLEY WATER DISTRICT DATE

PLAN AND PROFILE
ST IVES CT/SHEFFIELD ABBOT AVE

ASHTON PARK
THE VISTAS - PARCEL P

DRAWN BY: [Blank]
DESIGNED BY: [Blank]
CHECKED BY: [Blank]
PROJECT NO: 240191



SHEET
14 OF 20 SHEETS
DRAWING NO.
3074-4665

5/16

DATE	BY	REVISION

GREYSTONE HOMES
Carter Burgess
6655 Bermuda road
Las Vegas, NV 89118
(702) 898-5400 Fax (702) 898-5454
Consultants in Planning, Engineering
Construction Management, and Related Services