

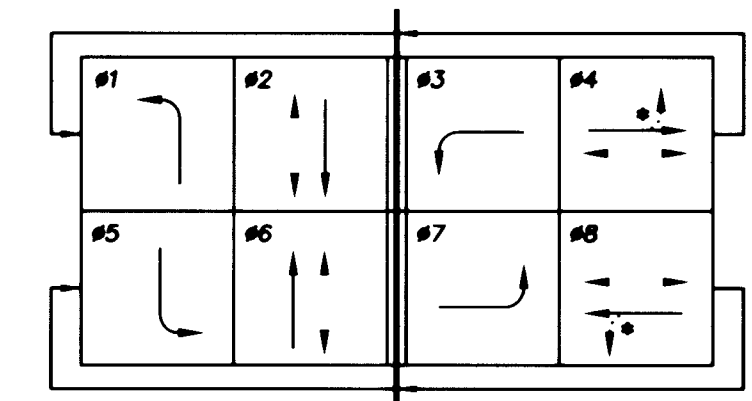
- CONSTRUCTION NOTES**
- 1 INSTALL No. 5 PULLBOX
 - 2 INSTALL No. 7 PULLBOX
 - 3 INSTALL EMERGENCY VEHICLE DETECTOR ON M-5 HEAD
 - 4 INSTALL R10-12 "LEFT TURN YIELD ON GREEN" SIGN
 - 5 INSTALL R3-BL MODIFIED SIGN AS SHOWN



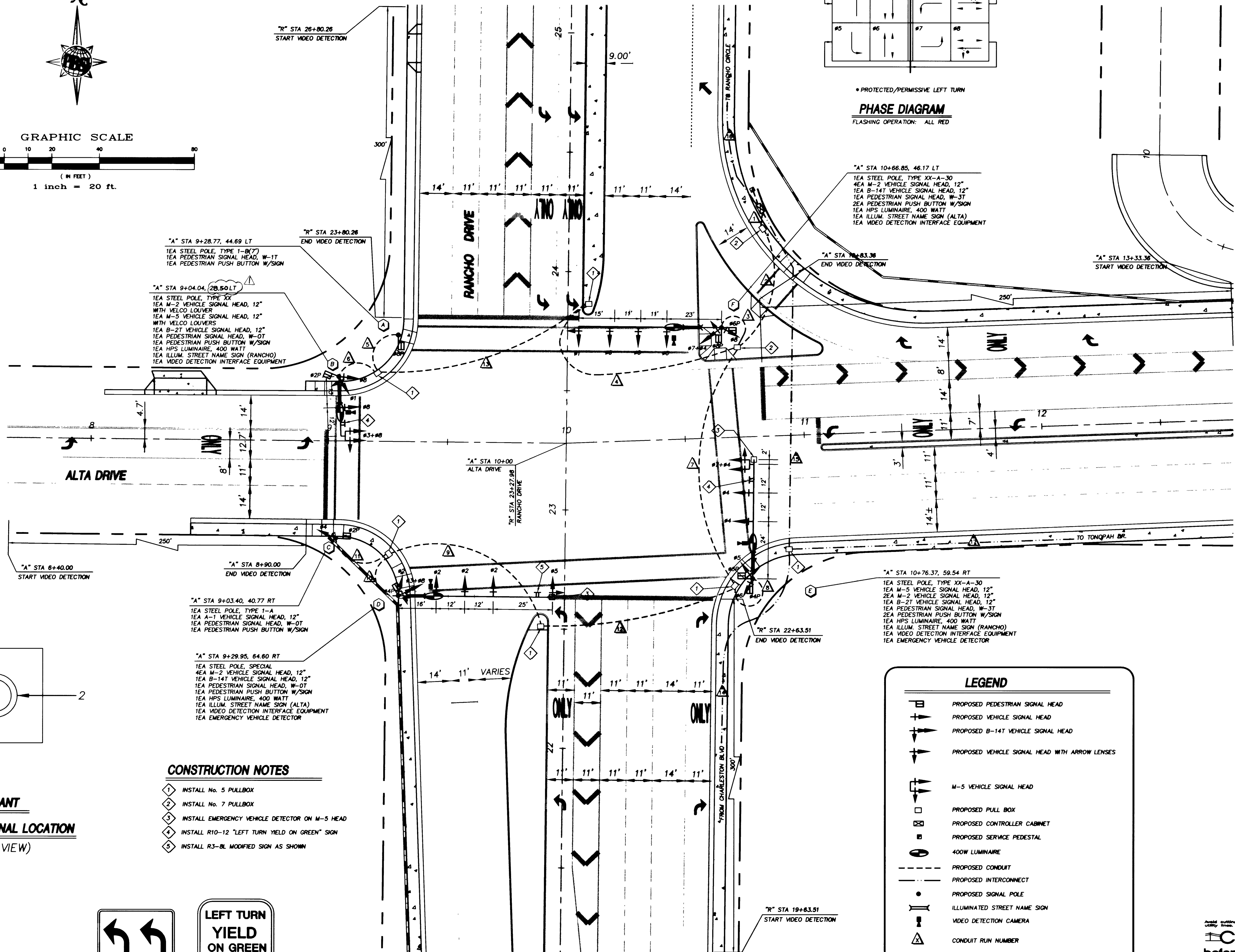
R3-BL MODIFIED



R10-12



• PROTECTED/PERMISSIVE LEFT TURN
PHASE DIAGRAM
 FLASHING OPERATION: ALL RED



LEGEND

	PROPOSED PEDESTRIAN SIGNAL HEAD
	PROPOSED VEHICLE SIGNAL HEAD
	PROPOSED B-14T VEHICLE SIGNAL HEAD
	PROPOSED VEHICLE SIGNAL HEAD WITH ARROW LENSES
	M-5 VEHICLE SIGNAL HEAD
	PROPOSED PULL BOX
	PROPOSED CONTROLLER CABINET
	PROPOSED SERVICE PEDIESTAL
	400W LUMINAIRE
	PROPOSED CONDUIT
	PROPOSED INTERCONNECT
	PROPOSED SIGNAL POLE
	ILLUMINATED STREET NAME SIGN
	VIDEO DETECTION CAMERA
	CONDUIT RUN NUMBER
	VIDEO DETECTION AREA
	A = POLE IDENTIFICATION

Call before you Overhead 1-702-593-6111
 Call before you Dig 1-800-227-2600

Department of Public Works
ALTA/RANCHO IMPROVEMENTS PHASE II
ALTA / RANCHO TRAFFIC SIGNAL PLAN

REVISIONS

NO.	DATE	DESCRIPTION
1	7/8/01	CHANGES F.Y. C.A.V.

ENGINEERING DESIGN SECTION
 DRAWN BY: J. XIE
 DESIGNED BY: J. XIE
 CHECKED BY: W. HORLACHER
 DATE: DECEMBER 06, 2000

PBS&J
 901 N. Green Valley Pkwy.
 Henderson, Nevada 89014
 Telephone: 702-263-7273
 Fax: 702-263-7260
 ENGINEERING: PLANNING - SURVEYING - CONSTRUCTION SERVICES

CITY OF LAS VEGAS
 NEVADA

DRAWING No. 54
 T7
 PLAN# 107-V3114 56