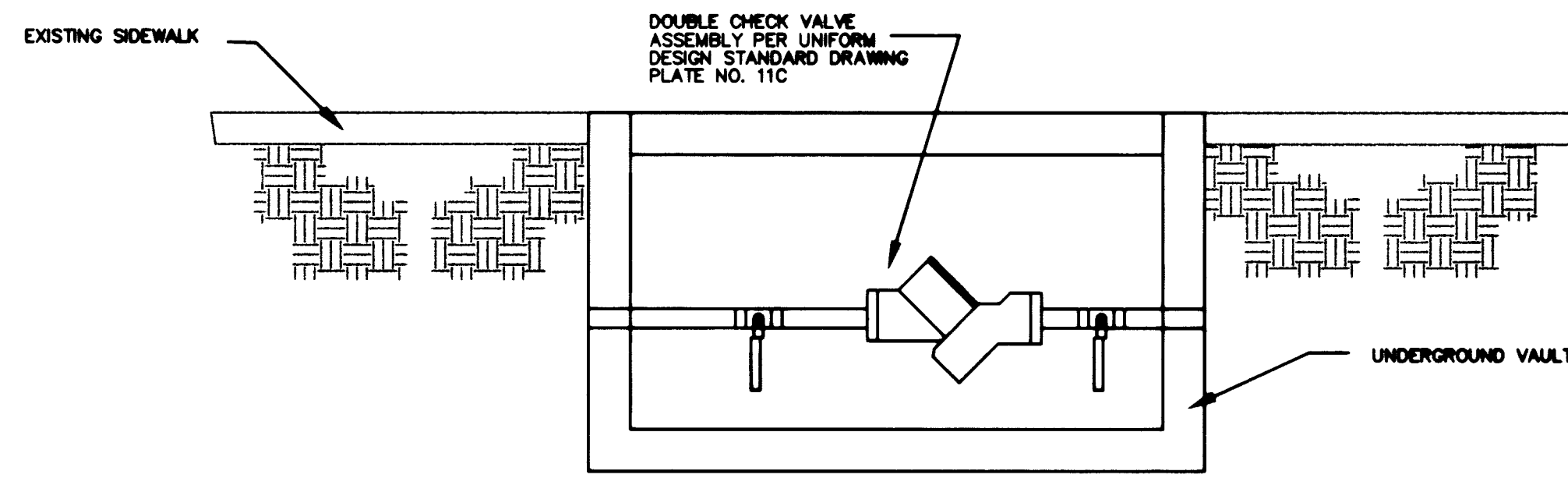
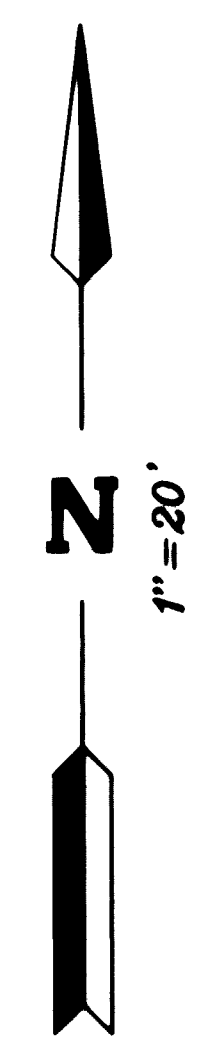
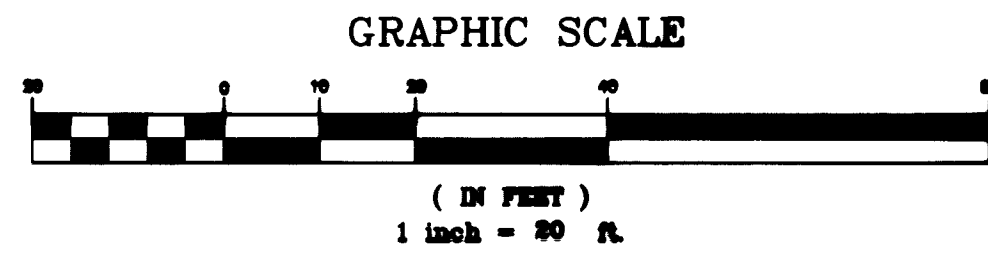


VICINITY MAP
K.T.A.



DCVA VAULT SCHEMATIC
NTS



CALL before you DIG
1-800-227-2600
UNDERGROUND SERVICE (USA)
AVOID CUTTING UNDERGROUND UTILITY LINES. IT'S COSTLY.

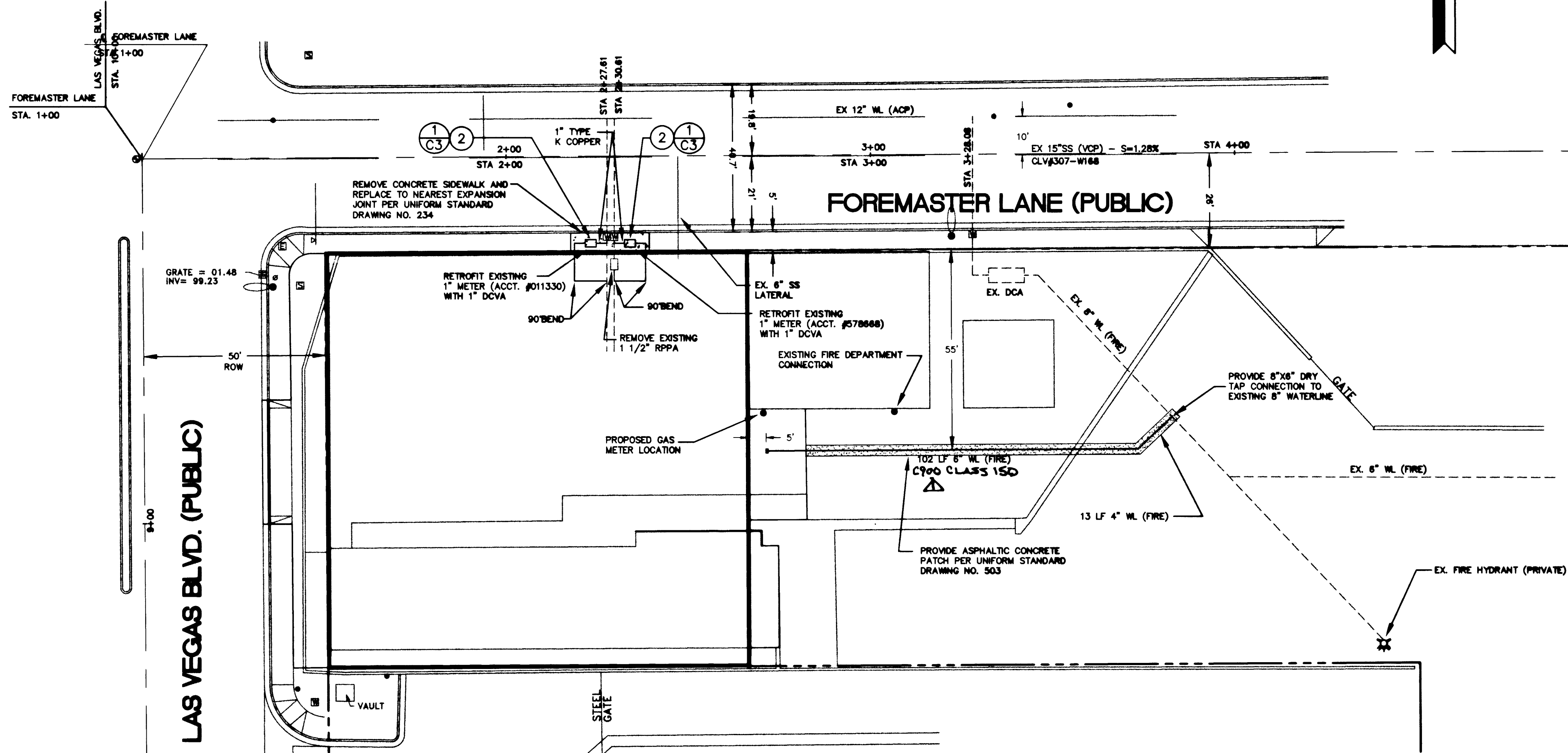
CALL before you Overhead
1-702-593-6111
UNDERGROUND SERVICE (USA)
AVOID OVERHEAD POWER LINE CONTACT. IT'S COSTLY.

NOTE:
PRIOR TO INSTALLATION OF 6 INCH WATERLINE FOR SPRINKLERS, VERIFY EXACT LOCATIONS AND DEPTHS OF EXISTING WATERLINES.

QUANTITIES

	ONSITE	OFFSITE
1" DCVA		2 EA
1" WATERLINE (DOMESTIC)	40 LF	
6" WATERLINE (FIRE)	115 LF	100 SF
4" CONCRETE SIDEWALK (DWG. #234)		
3" ASPHALTIC PATCH (DWG. #503)	350 SF	

THESE QUANTITIES ARE FOR PLAN CHECKING PURPOSES ONLY, AND SHOULD NOT BE USED BY CONTRACTORS TO DETERMINE FINAL QUANTITIES.



CLV FIRE DEPARTMENT

FIRE FLOW REQUIREMENT IS 1500 GALLONS PER MINUTE AT 20 POUNDS PER SQUARE INCH RESIDUAL.
BASED ON:
SQUARE FOOTAGE: 13,100 SF
LARGEST AREA BETWEEN AREA SEPARATION WALLS: 13,100 SF
BUILDING HEIGHT:
NUMBER OF STORES: 1
TYPE OF CONSTRUCTION: VM
OCCUPANCY:
FULL AUTOMATIC SPRINKLER SYSTEM: YES
REVIEWED BY:
DATE:

REVIEWED BY: *[Signature]*
DATE: 11/17/00

APPROVAL OF THESE PLANS SHALL NOT BE CONSTRUED TO BE A PERMIT FOR NOR AN APPROVAL OF ANY VIOLATION OF ANY OF THE PROVISIONS OF THE STATE OR COUNTY LAWS.

CONSTRUCTION NOTES

- LOCATION OF UNDERGROUND UTILITIES SHOWN ON THE DRAWINGS WERE OBTAINED BY A SEARCH OF AVAILABLE RECORDS. THE ENGINEER ASSUMES NO RESPONSIBILITY FOR UTILITIES OR STRUCTURES NOT SHOWN OR NOT IN THE LOCATION ON DRAWINGS.
- INSTALL (2) 1" DCVA BACKFLOW PREVENTION DEVICES PER UDS PLATE NO. 11C (SHEETS 1 & 2).

NOTE: INSTALL BACKFLOW DEVICES BELOW GRADE IN APPROPRIATELY SIZED METER ENCLOSURES.

DOUBLE CHECK VALVE ASSEMBLY (2) 1" (BELOW GRADE)

APPROVED DOUBLE CHECK VALVE ASSEMBLY(S) (DCVA) SHALL BE INSTALLED PER THE UDSAS PLATE 11C. NO WATER SHALL BE TAKEN FROM A SERVICE REQUIRING BACKFLOW PREVENTION UNTIL THE DOUBLE CHECK VALVE ASSEMBLY HAS BEEN SUCCESSFULLY TESTED BY THE LVVWD.
ANY BLOCK WALL OR OTHER FENCE MATERIAL SHALL BE DESIGNED AND CONSTRUCTED AROUND THE OUTSIDE OF THE EASEMENT(S), SO AS TO ALLOW THE DISTRICT DIRECT ACCESS FROM THE ADJACENT RIGHT-OF-WAY.
EASEMENTS SHALL BE CLEARLY MARKED OR STAKED PRIOR TO THE START OF CONSTRUCTION.

BENCHMARK
CITY OF LAS VEGAS BENCH MARK STATION 7001233WS, A RIVET AND PLATE IN TOP OF CURB, NE RETURN OWENS AVE. AND LAS VEGAS BLVD. ELEVATION= 579.2135 METERS= 1900.303 FEET NAVD 88

BASIS OF BEARINGS
NORTH 89°38'29" EAST BEING THE CENTERLINE OF FOREMASTER LANE AS PER FILE 70, PAGE 58 OF SURVEYS, CLARK COUNTY OFFICIAL RECORDS.

APPROVALS

[Signature] 11/17/00
LAS VEGAS VALLEY WATER DISTRICT
APPROVED FOR CONSTRUCTION. DATE

<p>ANDERSON DAIRY 3514 E. TROPICANA, SUITE 2 LAS VEGAS, NV, 89121 PH. (702) 597-2988 FAX. (702) 597-0309</p>	<p>ANDERSON DAIRY WAREHOUSE EXPANSION APN 139-26-102-003</p>
<p>DESIGNED BY: K.E. CHECKED BY: K.E. PROJECT NO: UT-1713.DWG</p>	<p>DATE: 11/17/00</p>
<p>SCALE HORIZONTAL: 1"=20' VERTICAL: SHEET C3 3 OF 3 SHEETS PROJECT NO: 107-V-3356</p>	