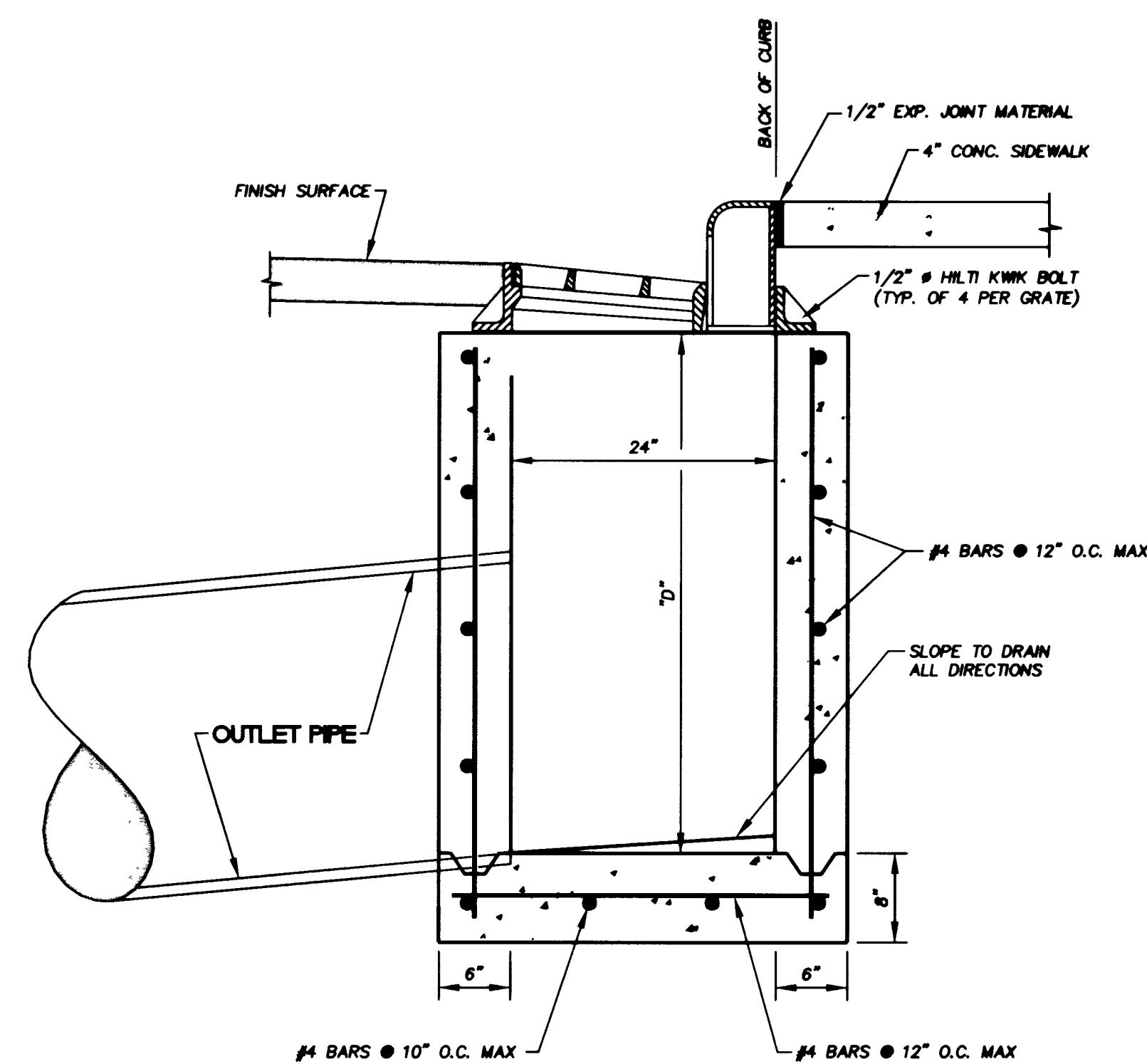
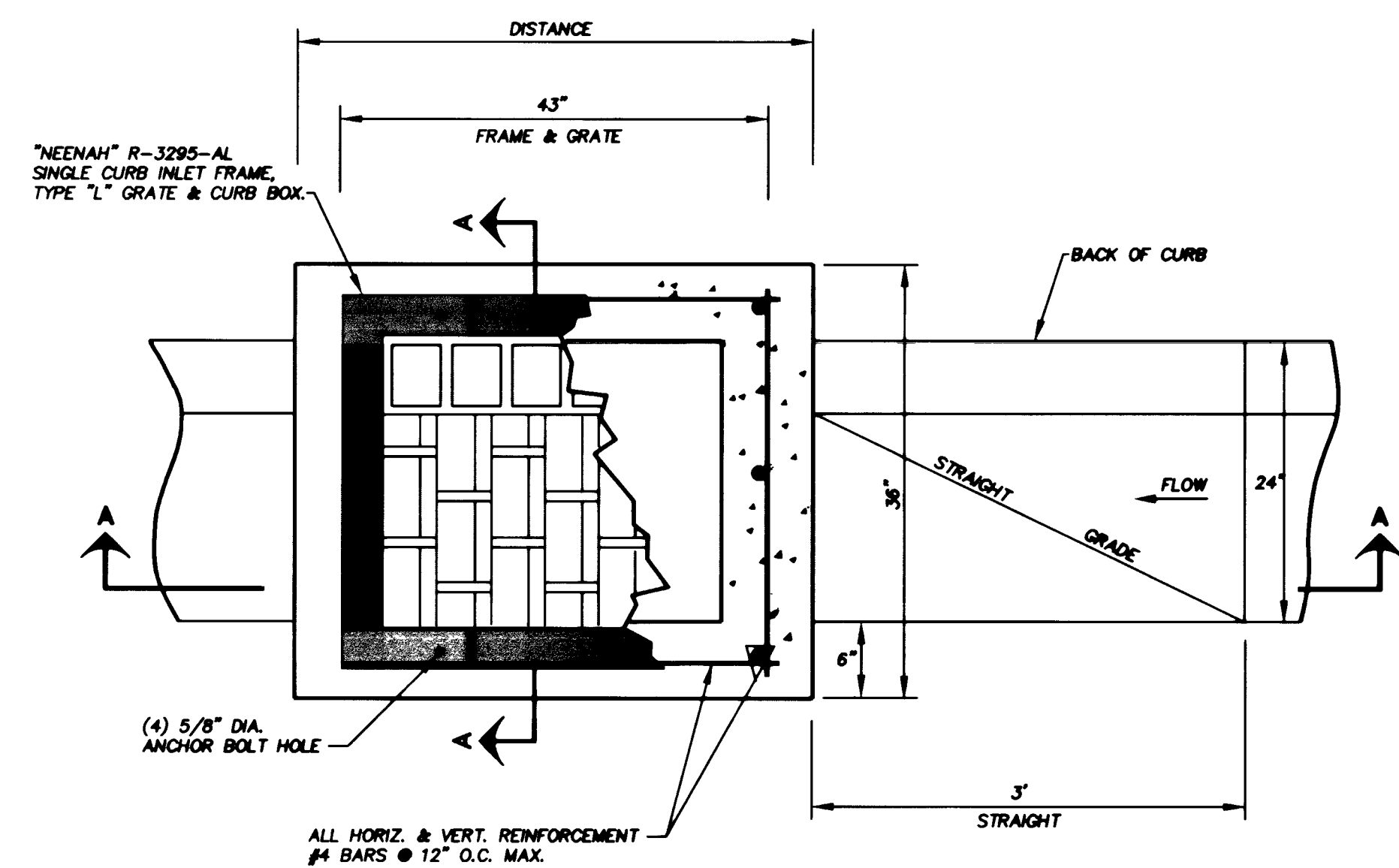


SECTION A

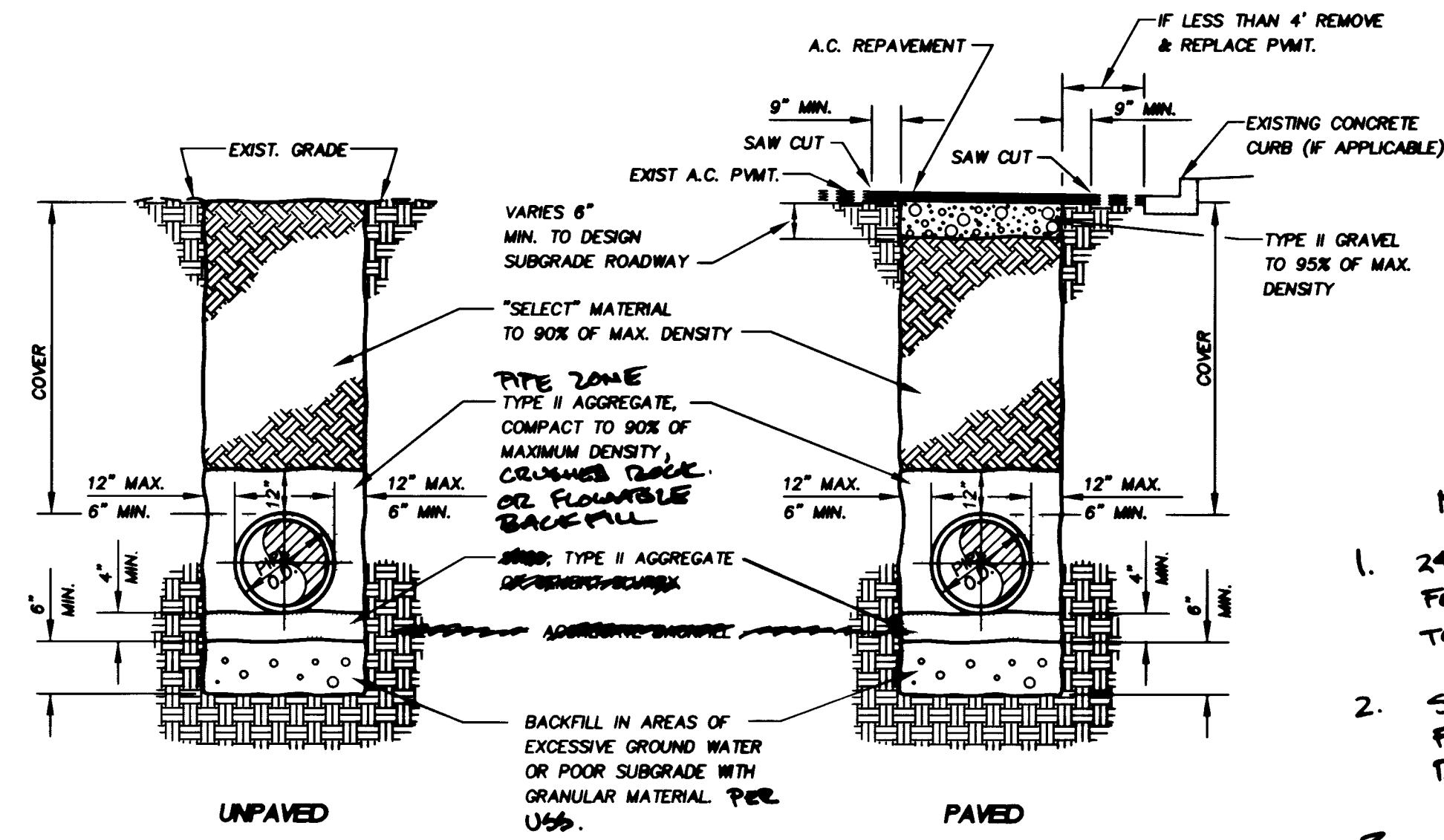


SECTION B



TYPE CM1 DROP INLET

N.T.S.



NOTE:
THIS PLATE APPLIES TO THE INSTALLATION OF ALL SERVICE LATERALS. TRENCH WIDTH MINIMUMS DO NOT APPLY TO LATERALS LESS THAN 4".

NOTE:
IF PROFILE DRAWING OF THE PIPE IS PROVIDED, THE COVER SHALL BE AS SHOWN ON PROFILE SHEET.

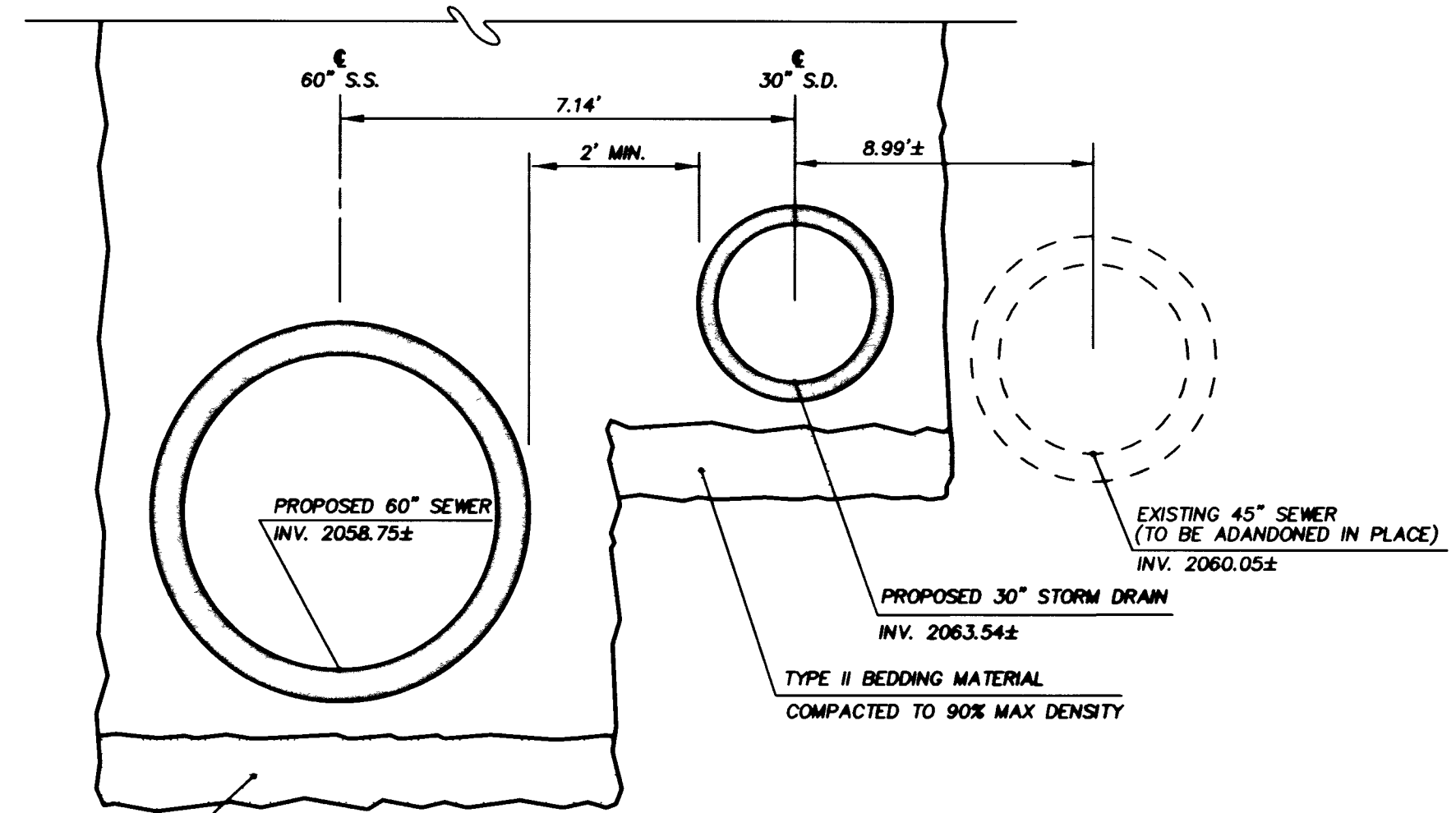
TYPICAL TRENCH SECTION & BACKFILL SPECIFICATION

N.T.S.



- NOTES:
- 24" MIN. FLOWABLE BACKFILL FOR 30" S.D., STA 10+15 TO 12+00, RANCHO
 - SEE SHTS C3 & C4 FOR FULL WIDTH PAVMT RECONSTRUCTION.
 - A.C. PATCH REPAIRS FOR RANCHO, ALTA, MEX, FALOWING & FINED U.O.N.
 - 4" AC OVER 18" TYPE II A.B. @ 95% COMPACTION
 - 12" MIN PATCH WIDE LONGITUDE 6' " " " TRANSVERSE

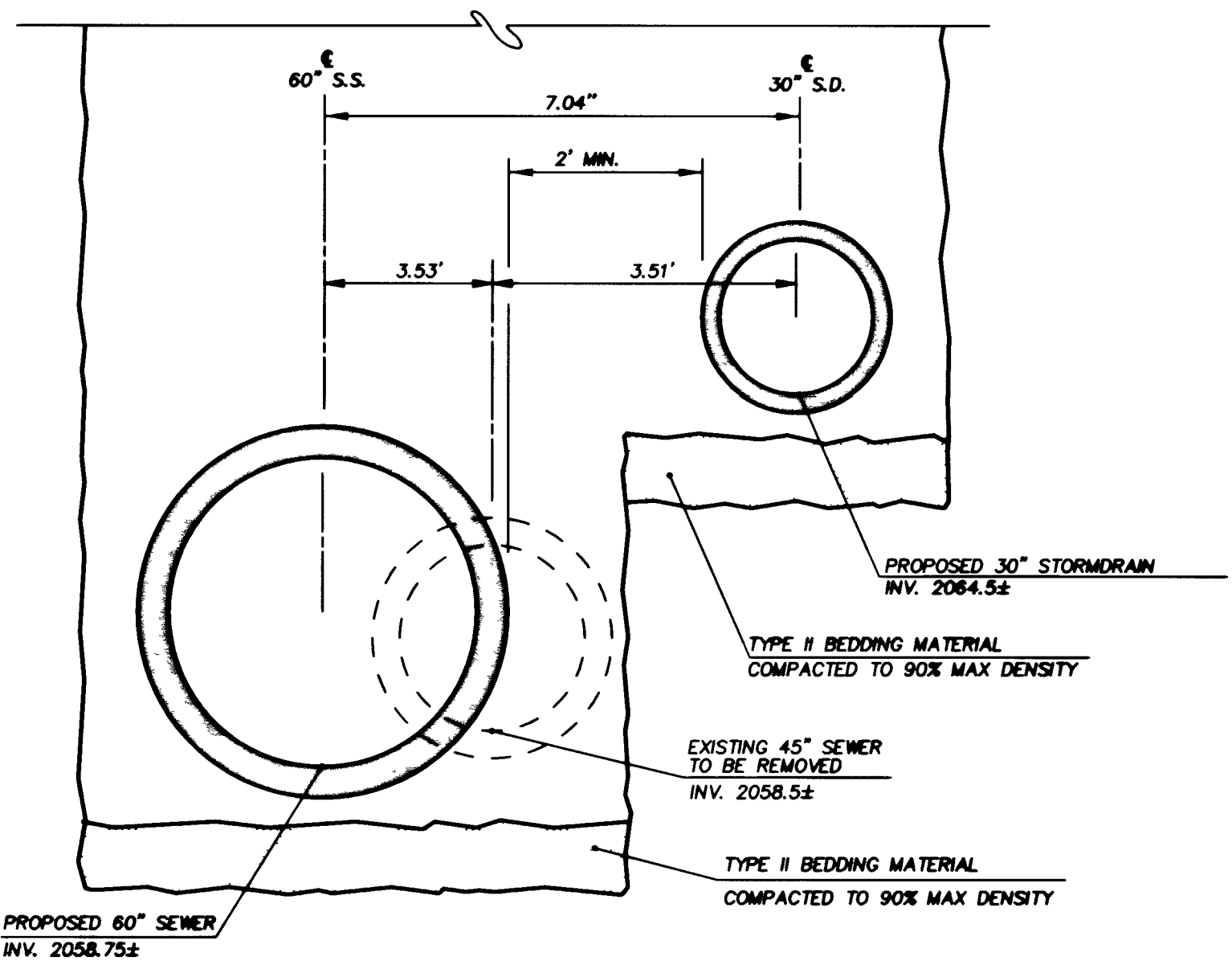
NOTE:
FOR PIPE BEDDING & BACKFILL SPECIFICATIONS SEE



TRENCH SECTION STA 19+75.00

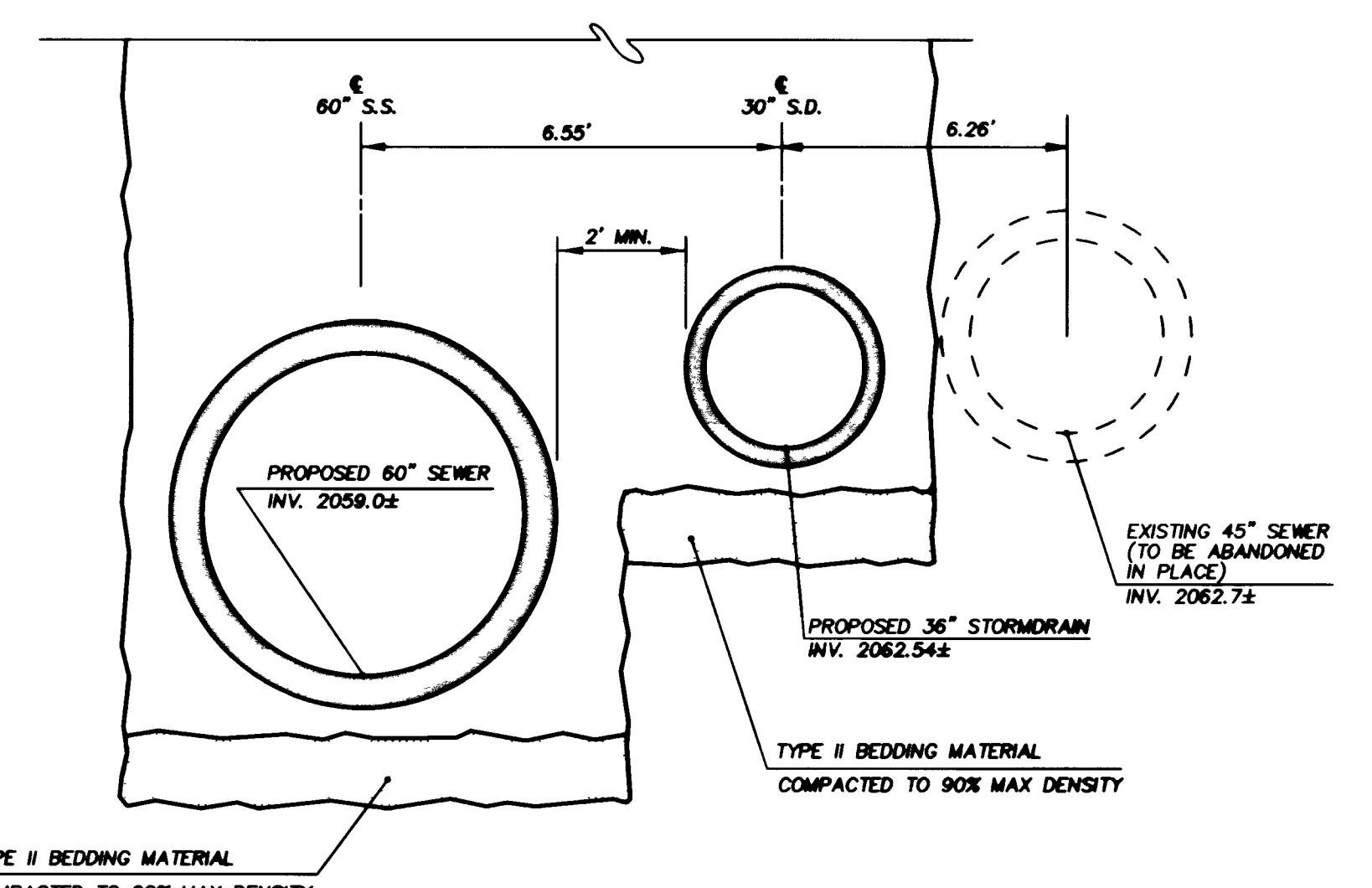
N.T.S.

NOTE:
EXISTING 45" SEWER PIPE SHALL BE REMOVED WHERE THE DIMENSION FROM THE OUTSIDE OF THE EXISTING SEWER PIPE TO THE OUTSIDE OF THE PROPOSED SEWER PIPE IS LESS THAN 2'-0"



TRENCH SECTION STA 16+80.00

N.T.S.



TRENCH SECTION STA 22+90.00

N.T.S.

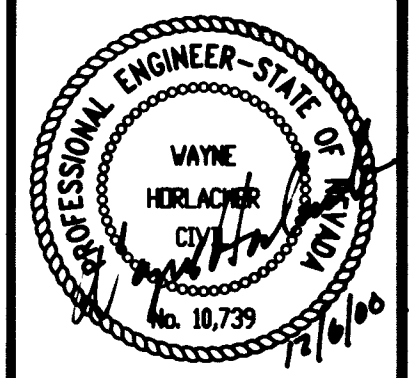
TYPICAL COMBINED TRENCH SECTION & BACKFILL SPECIFICATION

N.T.S.



REVISIONS		NO.	DATE	DESCRIPTION
1	REVISIONS BY CJW			

ENGINEERING DESIGN SECTION
 DRAWN BY: W. HORLACHER
 CHECKED BY: W. HORLACHER
 DATE: DECEMBER 06, 2000
 JOB NO.: 51736
 901 N. Green Valley Pkwy.
 Henderson, Nevada 89014
 Telephone: 702/887-7275
 Fax: 702/887-7200
PBS&J
 ENGINEERING, PLANNING, SURVEYING, CONSTRUCTION SERVICES



Department of Public Works
 ALTA/RANCHO IMPROVEMENTS PHASE II
 GENERAL STORM DRAIN DETAILS
 STA 0+00.00 TO STA 0+00.00

