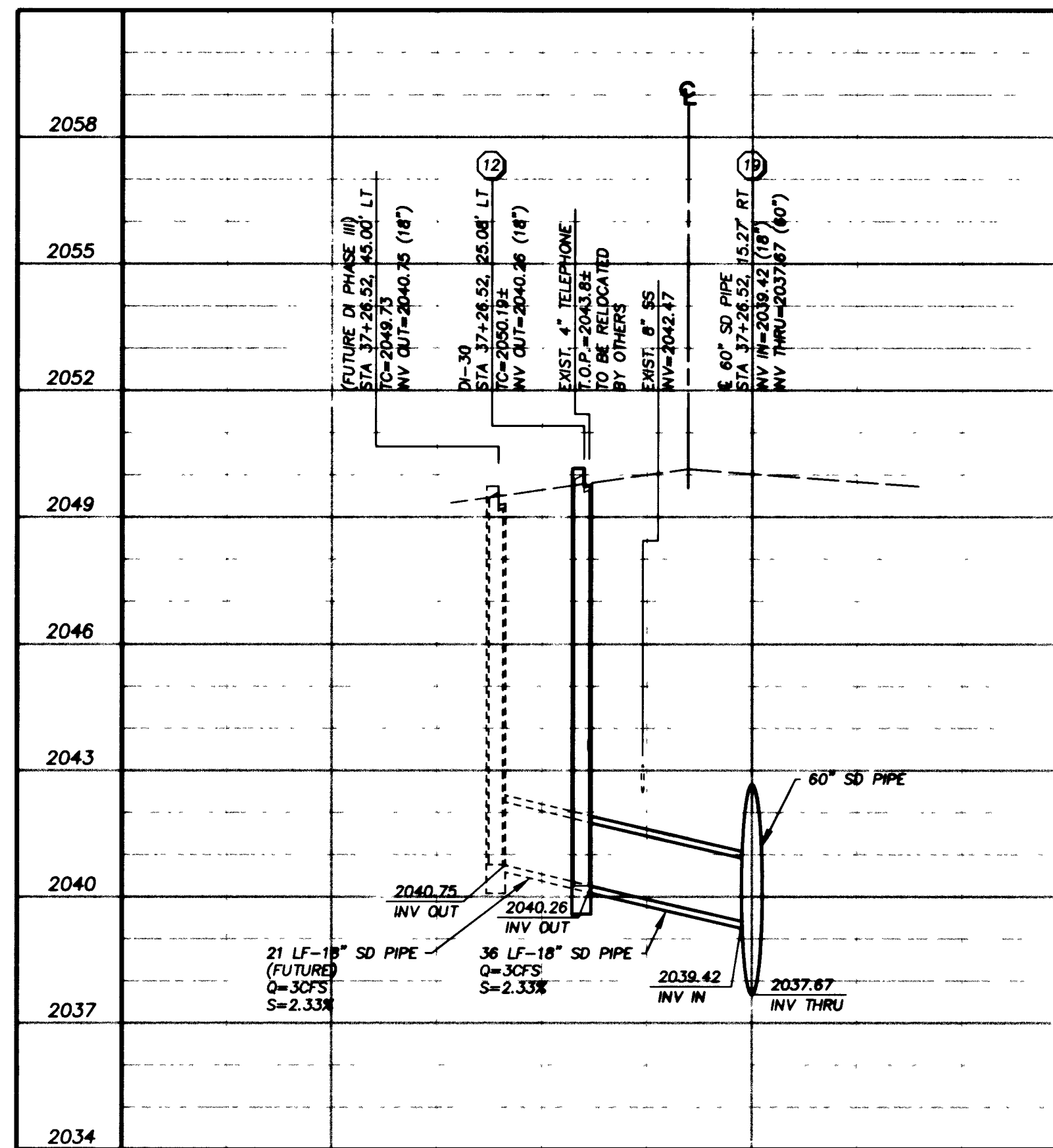
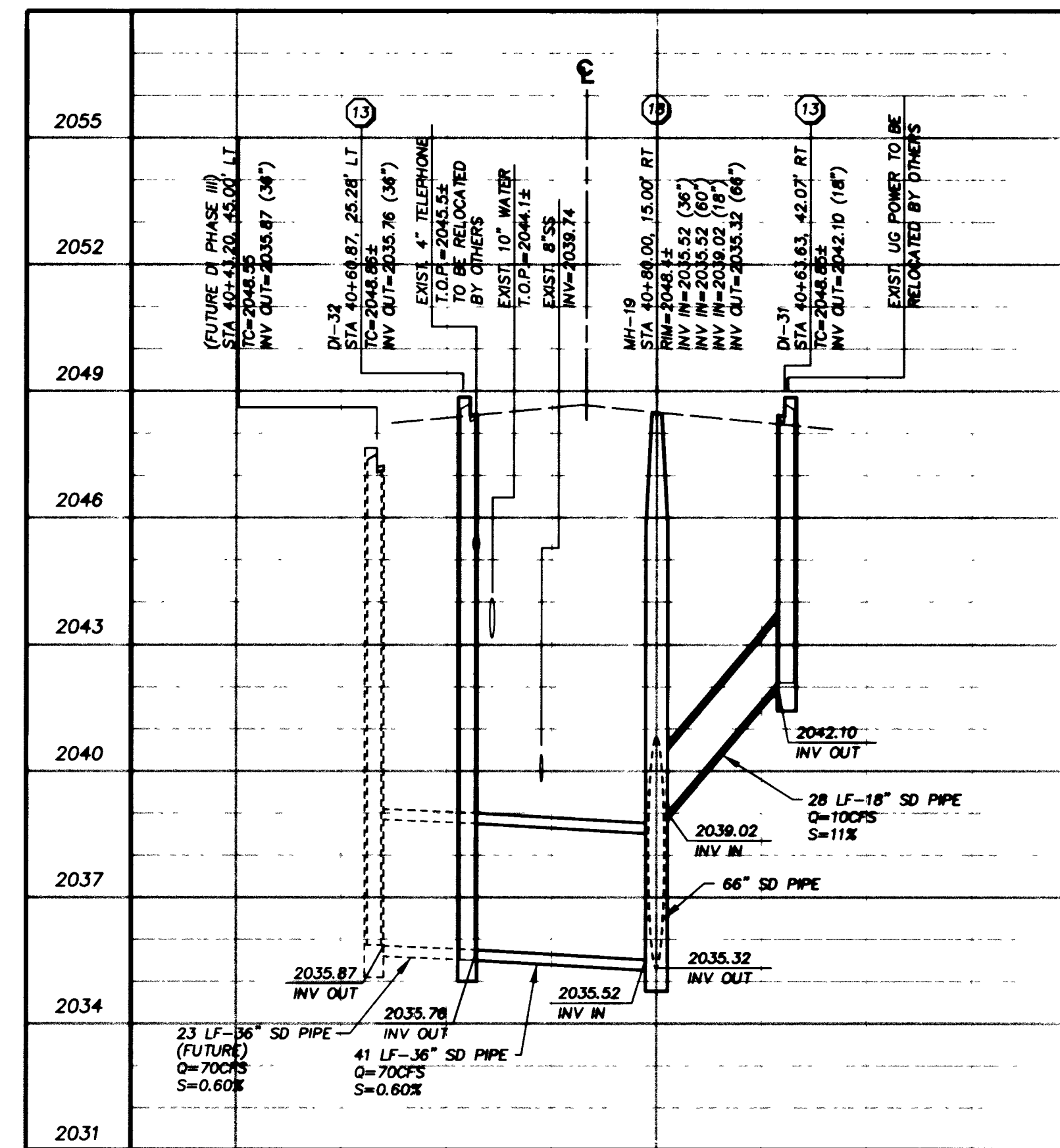


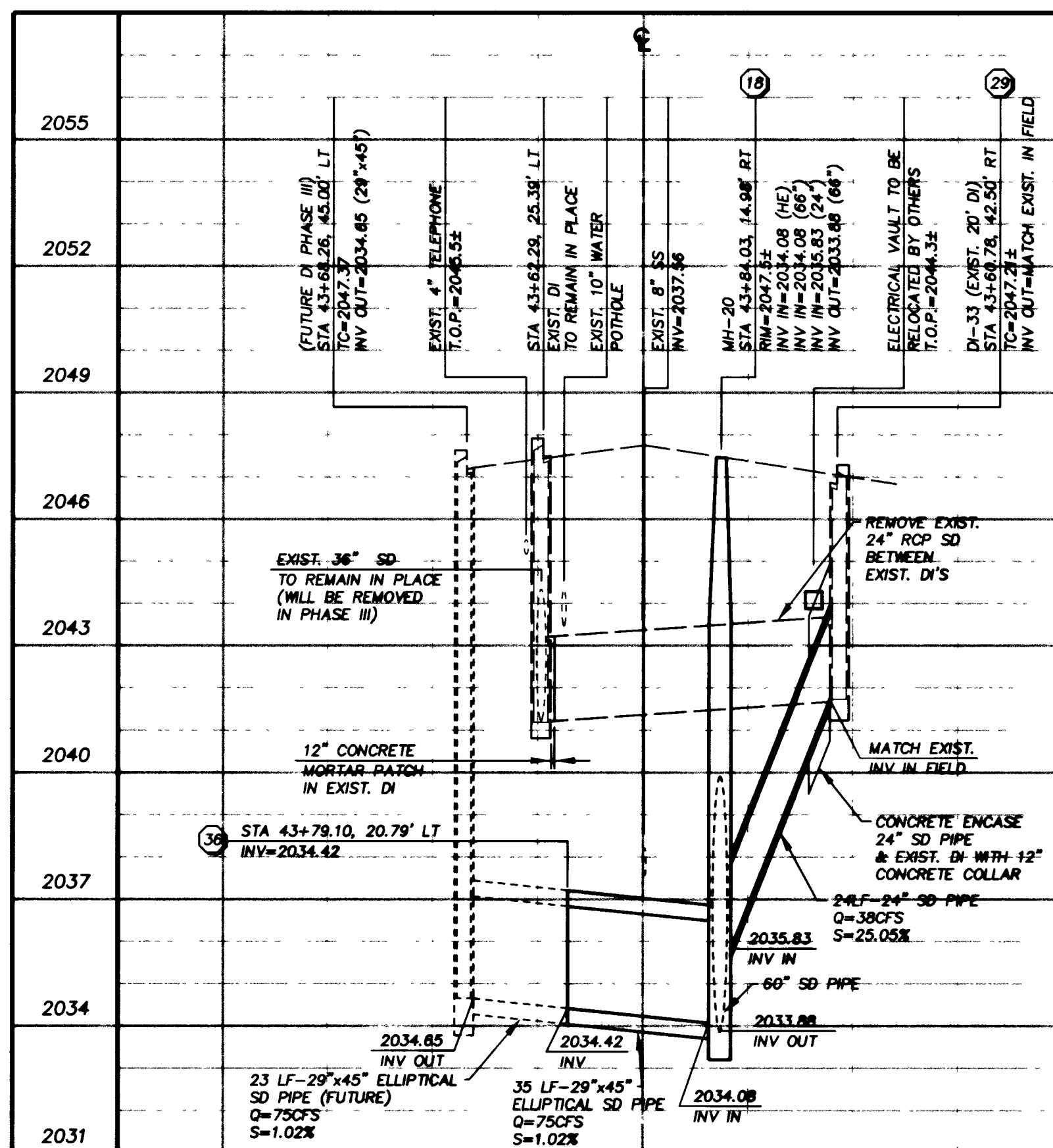
DI-29 STA. 30+64.53
END 18' RCP SD STA. 30+97.71



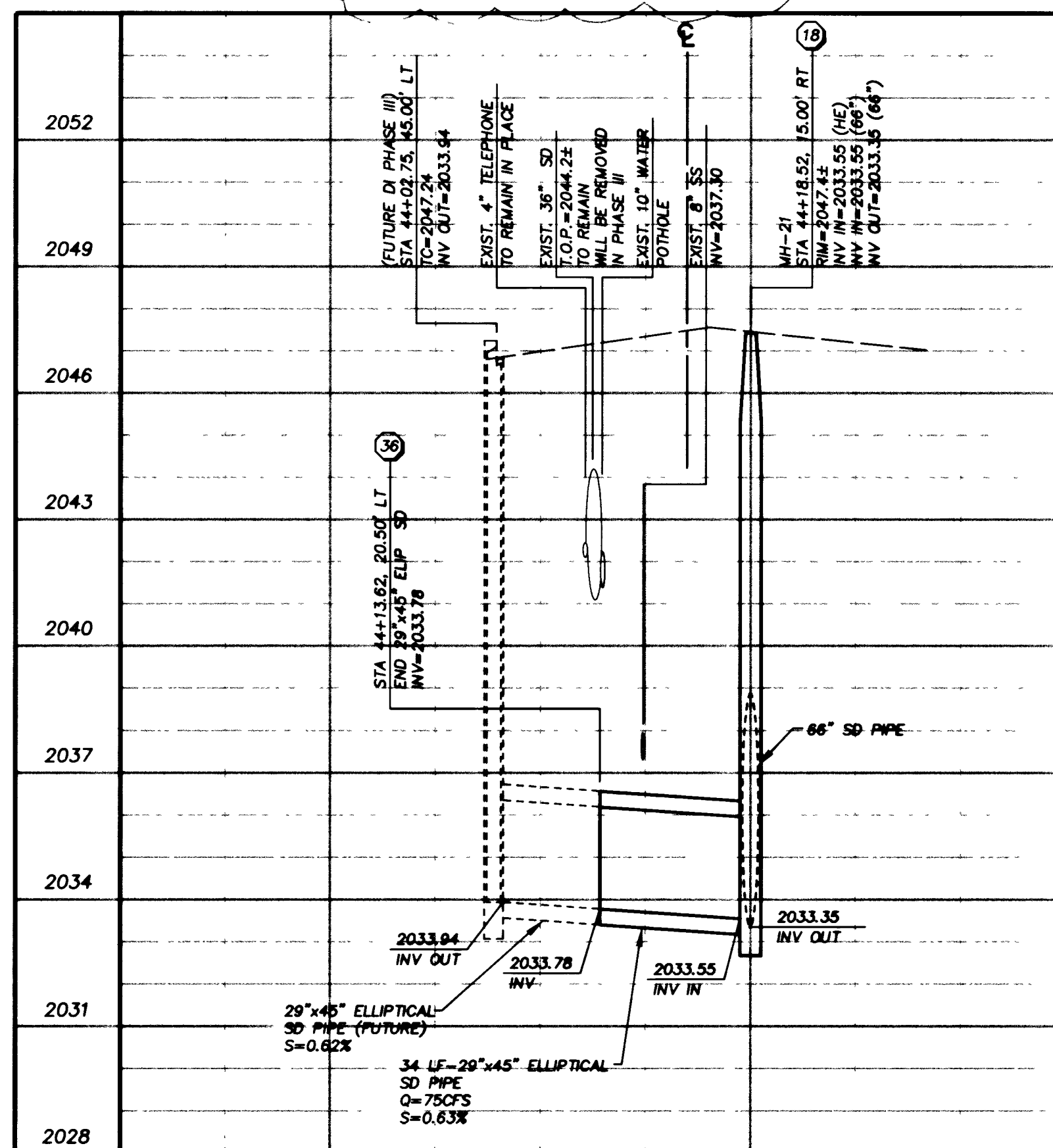
DI-30 STA. 37+26.52



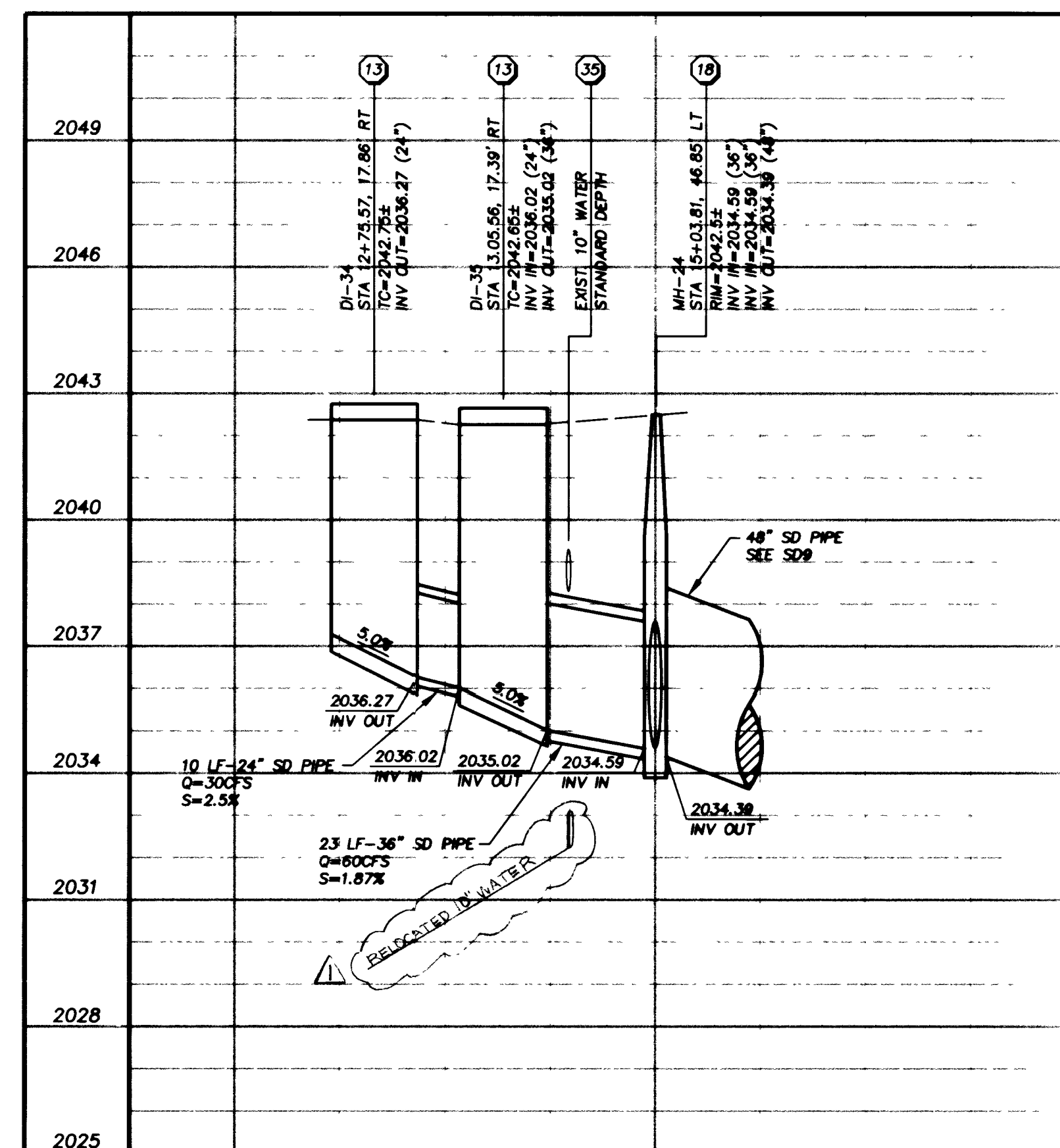
DI-31 STA. 40+63.63
DI-32 STA. 40+60.87



DI-33 STA. 43+60.78
END 29'x45' HE RCP SD STA. 43+79.10



END 29'x45' HE RCP SD STA. 44+13.62



DI-34 STA. 12+75.57
DI-35 STA. 13+05.58

SHEET INDEX

GRAPHIC SCALE

HORIZ 1 inch = 30 ft.
 VERTICAL 1 inch = 3 ft.

BASIS OF BEARING

N89°28'51" BEING CENTERLINE OF ALTA DRIVE PER BOOK 10, PAGE 57, REC. FEB. 2, 1965

BENCHMARK

CLV BENCHMARK BM 1LV01325E6, CLV DATUM (2071.68') BRASS DISK AT THE NORTHWEST CORNER OF RANCHO DRIVE AND PALMADO DRIVE.

CAUTION

EXISTING UTILITIES ARE LOCATED ON THE PLANS FROM A SEARCH OF AVAILABLE RECORDS. CONTRACTOR TO VERIFY LOCATIONS AND DEPTHS PRIOR TO CONSTRUCTION.

- KEY NOTES**
- REMOVAL ITEMS**
- (A) REMOVE EXISTING DROP INLET.
 - (B) REMOVE BLOCK AND MORTAR PLUG FROM 66" RCP.
 - (C) REMOVE EXISTING CURB, GUTTER AND SIDEWALK AS NEEDED TO INSTALL STORM DRAIN, OR DROP INLET.
 - (D) NOT USED.
 - (E) REMOVE, REPAIR, AND REPLACE MEDIAN AS NEEDED TO CONSTRUCT STORM DRAIN.
 - (F) REMOVE EXISTING STORM DRAIN.
 - (G) REMOVE EXISTING MANHOLE.
 - (H) REMOVE EXISTING SANITARY SEWER.
- CONSTRUCTION ITEMS**
- (1) INSTALL 18" STORM DRAIN PIPE PER DETAIL B, DWG. SD17.
 - (2) INSTALL 24" STORM DRAIN PIPE PER DETAIL B, DWG. SD17.
 - (3) INSTALL 30" STORM DRAIN PIPE PER DETAILS, DWG. SD17.
 - (4) INSTALL 36" STORM DRAIN PIPE PER DETAIL B, DWG. SD17.
 - (5) INSTALL 48" STORM DRAIN PIPE PER DETAIL B, DWG. SD17.
 - (6) INSTALL 54" STORM DRAIN PIPE PER DETAIL B, DWG. SD17.
 - (7) INSTALL 60" RCP STORM DRAIN PER DETAIL B, DWG. SD17.
 - (8) INSTALL 66" RCP STORM DRAIN PER DETAIL B, DWG. SD17.
 - (9) INSTALL 24"x36" HORIZONTAL ELLIPTICAL RCP STORM DRAIN PER DETAIL B, DWG. SD17.
 - (10) INSTALL 29"x45" ELLIPTICAL RCP STORM DRAIN PER DETAIL B, DWG. SD17.
 - (11) INSTALL TYPE "A" DROP INLET PER SD # 411.
 - (12) INSTALL TYPE CM1 DROP INLET PER DETAIL A, DWG. SD17.
 - (13) INSTALL TYPE CM2 DROP INLET PER DETAIL A, DWG. SD16.
 - (14) INSTALL 60" TYPE I MANHOLE PER SD # 403.
 - (15) INSTALL 48" TYPE II MANHOLE PER SD # 405.
 - (16) INSTALL 60" TYPE III MANHOLE PER SD # 406.
 - (17) INSTALL MANHOLE PER DETAIL B, DWG. SD18.
 - (18) INSTALL MANHOLE PER DETAIL D, DWG. SD18.
 - (19) CONNECT STORM DRAIN LATERAL PER DETAIL C, DWG. SD18.
 - (20) FUTURE 18" STORM DRAIN PIPE.
 - (21) FUTURE 24" STORM DRAIN PIPE.
 - (22) FUTURE 36" STORM DRAIN PIPE.
 - (23) FUTURE 60" RCP STORM DRAIN.
 - (24) FUTURE 29"x45" ELLIPTICAL RCP STORM DRAIN.
 - (25) FUTURE TYPE "A" DROP INLET PER SD # 411.
 - (26) FUTURE TYPE CM1 DROP INLET PER DETAIL A, DWG. SD17.
 - (27) FUTURE TYPE CM2 DROP INLET PER DWG. SD18.
 - (28) FUTURE 48" TYPE II MANHOLE PER SD # 405.
 - (29) EXISTING DROP INLET TO REMAIN.
 - (30) 66" RCP STORM DRAIN CONSTRUCTED BY OTHERS.
 - (31) ABANDON EXISTING STORM DRAIN OR DROP INLET AND FILL WITH CONCRETE SLURRY.
 - (32) EXISTING 48" RCP STORM DRAIN.
 - (33) EXTEND PIPE 8' PAST MANHOLE AND PLUG WITH CEMENT MORTAR.
 - (34) EXISTING GAS LINE TO BE RELOCATED BY OTHERS.
 - (35) RELOCATE EXISTING WATER PER DETAIL "A" DWG. D2.
 - (36) CAP RCP LATERAL WITH 12" THICK MORTAR PLUG FOR FUTURE USE.
 - (37) ABANDON EXISTING 45" SANITARY SEWER IN PLACE SEE SHEET S51 FOR MORE INFORMATION.
 - (38) EXISTING DROP INLET CONSTRUCTED IN PHASE I.
 - (39) REMOVE PLUG AND CONNECT TO EXISTING RCP STORM DRAIN.
 - (40) 60" SANITARY SEWER, SEE SANITARY SEWER SHEETS FOR DETAILS.

REVISIONS

NO.	DATE	DESCRIPTION	APPROVED
1	3/6/01	CHANGE: P. CLV	

ENGINEERING DESIGN SECTION

DESIGNED BY: CCV
 CHECKED BY: CCV
 DATE: DECEMBER 05, 2000

PBS&J

501 N. Green Valley Pkwy.
 Henderson, Nevada 89014
 Phone: 702-279-7295
 Fax: 702-279-7291

PROFESSIONAL ENGINEER - STATE OF NEVADA

WAYNE HORLAACHER
 No. 4000

CITY OF LAS VEGAS

MEYARD

DRAWING No. 37
 SD14
 PLAN# 107-V3126 56

31665